

Carpenter's Creek

Ninth Avenue Bridge Armoring

By

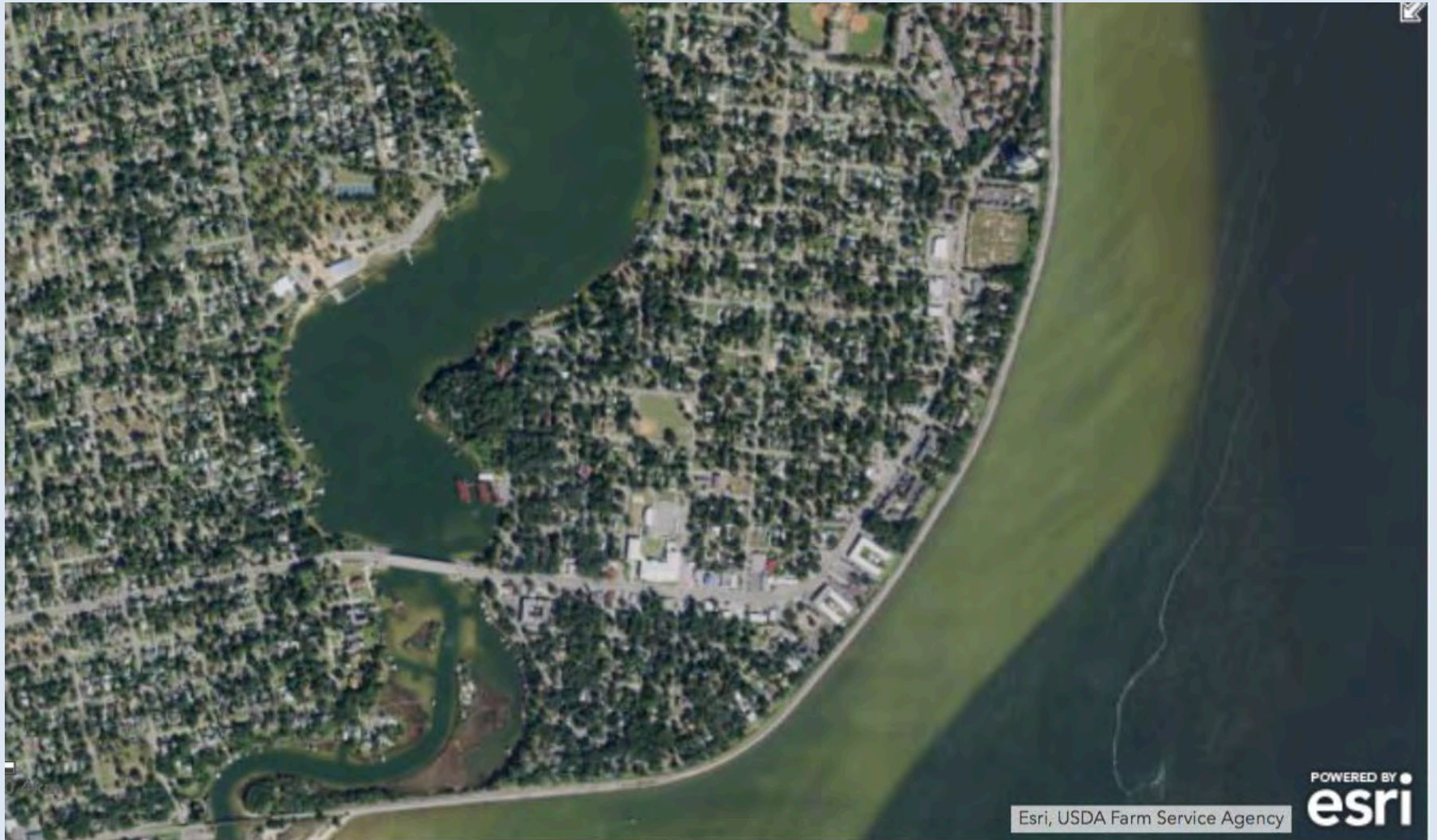
Laurie Murphy

Executive Director



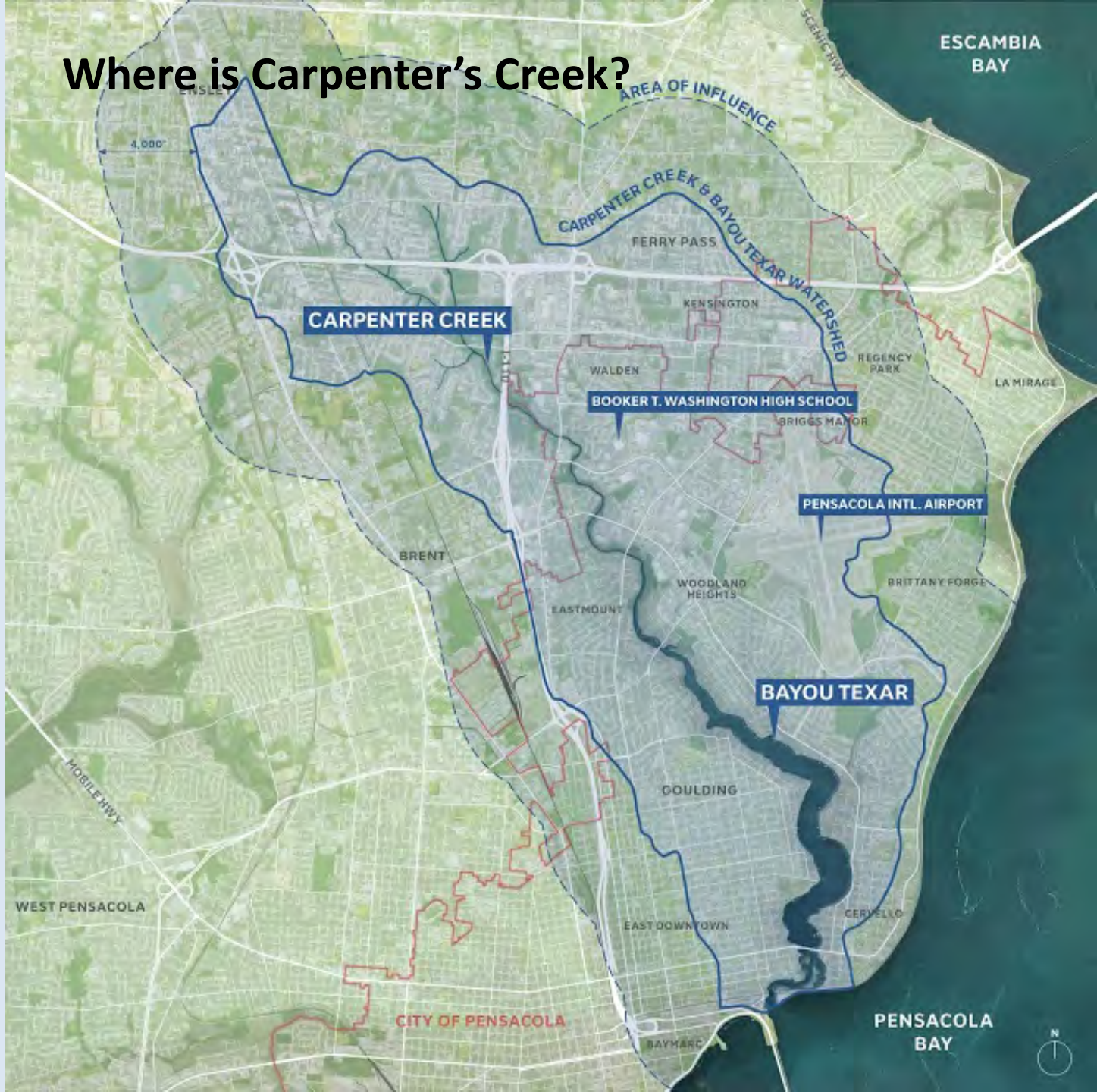


East Pensacola Heights, 1940's
debra32514



East Pensacola Heights, 2021

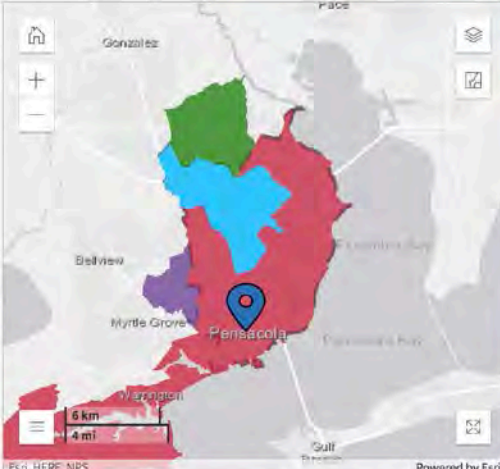
Where is Carpenter's Creek?



We are impaired

Let's get started!

Pensacola, FL [Go](#) OR [Use My Location](#)



State waterbody ID: FL690L

- BAYVIEW PARK PIER**
State Waterbody ID: FL738AB
- BELLSHEAD BRANCH**
State Waterbody ID: FL779
- CARPENTER CREEK**
State Waterbody ID: FL676

Year Last Reported: 2018
Waterbody Condition: Impaired
Organization Name (ID): Florida (21FL303D)

Evaluated Use	Condition
Aquatic Life	Impaired
Recreation	Impaired

Impairment Categories were identified:

- Bacteria and Other Microbes

[View Waterbody Report](#) (opens new browser tab)

Assessment Information from 2018

What is this water used for?

Expand All

- Fish and Wildlife Propagation - Freshwater** **Impaired** >
- Recreation** **Impaired** >

Probable sources contributing to impairment from 2018:

No probable sources of impairment identified for this waterbody.

The total area within the Carpenter Creek WBID boundary is about 6,760 acres. The dominant land use category is urban land (urban and built-up; low-, medium-, and high-density residential; and transportation, communication, and utilities), which accounts for about 87% of the total WBID area. Low-impact land use areas, including rangeland, water, wetlands, upland forest, and barren land, make up about 13% of the total WBID area.

Headwaters, Olive Road



Between Bayou Blvd & 9th Ave





Bayou Texar



Wildlife Habitat









Student Participation

Headwaters on Olive Road Recreational Activities



Rich History



Fish Head Soup and Sassafras Tea



Ora Wills

This was a sawmill on Carpenter's Creek in the Pensacola area, about 1880-1910. Exact location unknown. [debra32514 on flickr](#)





Carpenter's Creek Bridge, 9th Ave, 1954
debra32514

FDOT ANNOUNCEMENT BRIDGE REPLACEMENT



Florida Department of
TRANSPORTATION

[E-Updates](#) | [FL511](#) | [Mobile](#) | [Site Map](#)



[Home](#) [About FDOT](#) [Contact Us](#) [Maps & Data](#) [Offices](#) [Performance](#) [Projects](#)

Northwest Florida Roads

[NWFL Roads](#) / [Current Projects](#) / [SR 289 \(9th Ave\) over Carpenter Creek Bridge](#)

SR 289 (9th Ave) over Carpenter Creek Bridge



Project Details

The Florida Department of Transportation (FDOT) will begin a \$4.3 million construction project to replace the existing bridge culvert on North Ninth Avenue (State Road 289) over Carpenters Creek. The work will also include resurfacing North Ninth Avenue between Royce Street and Bayou Boulevard and a portion of Carpenters Creek Drive.



Project Overview

Project Number: 437178-1
Work Type: Bridge Replacement
Status: CONTRACT EXECUTED
Project Limits:
SR 289 (9th Avenue) over Carpenter Creek Bridge
Project Length: 0.009 miles
Project Manager: Jordan Burnett

Charrette Town Hall Meeting

New 9th Ave. Bridge over Carpenter's Creek



Lower reach of Carpenter's Creek

getting a new bridge on 9th Ave., next to Publix. This is a very important Florida Department of Transportation (FDOT) project. The old bridge is not the right bridge for Carpenter's Creek. We need to make sure that FDOT hears from the public and the neighborhoods that are impacted by flooding and other problems on the creek. We need a bridge that is not only the right bridge for the creek and environment, but it is architecturally and esthetically designed with lighting, traffic calming, pedestrian safety and other amenities. We are having a charrette style Town Hall meeting to provide input to FDOT and public officials. FDOT plans will be available for inspection and comment.

Beetle Mania: Information regarding a project to eliminate the invasive air potato vine on Carpenter's Creek using a beetle will be available. (Putting nature to work)

City Councilwoman Sherri Myers
6:00pm, Tuesday, Oct 24, Asbury Place
Cokesbury United Methodist Church
5725 N. 9th Ave.

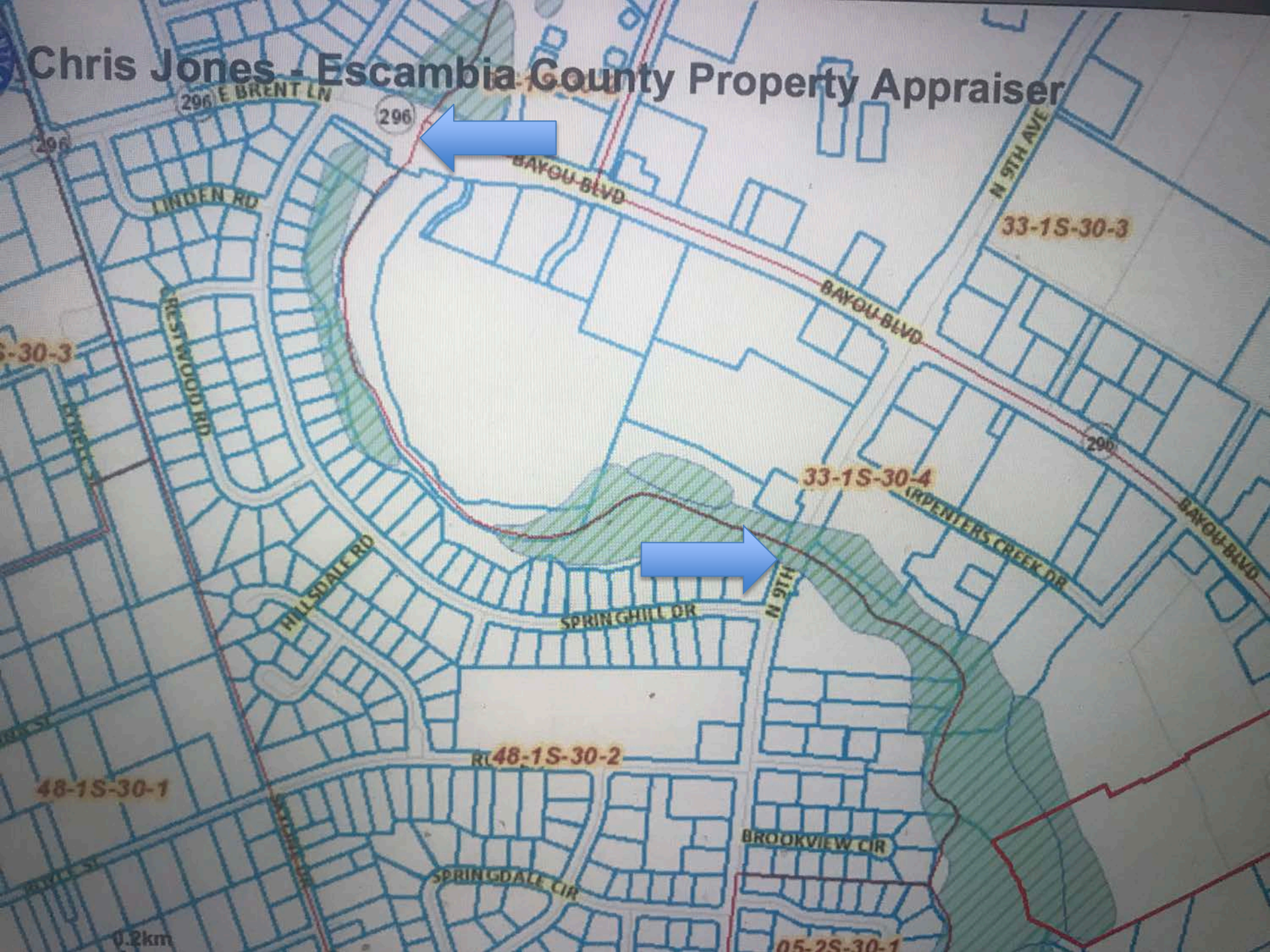
Refreshments provided.

For more information, contact me at (850) 484-0902, (850) 490-0054 smyers@cityofpensacola.com, Visit my blog at <http://myersdistrict2.blogspot.com/> For special accommodations under the Americans with Disabilities Act, contact me at (850) 484-0902, (850) 490-0054 smyers@cityofpensacola.com, or sign language interpreter, or other special accommodations.

9th Avenue at Bayou Blvd



Chris Jones - Escambia County Property Appraiser



HOW MANY ARE THERE?...



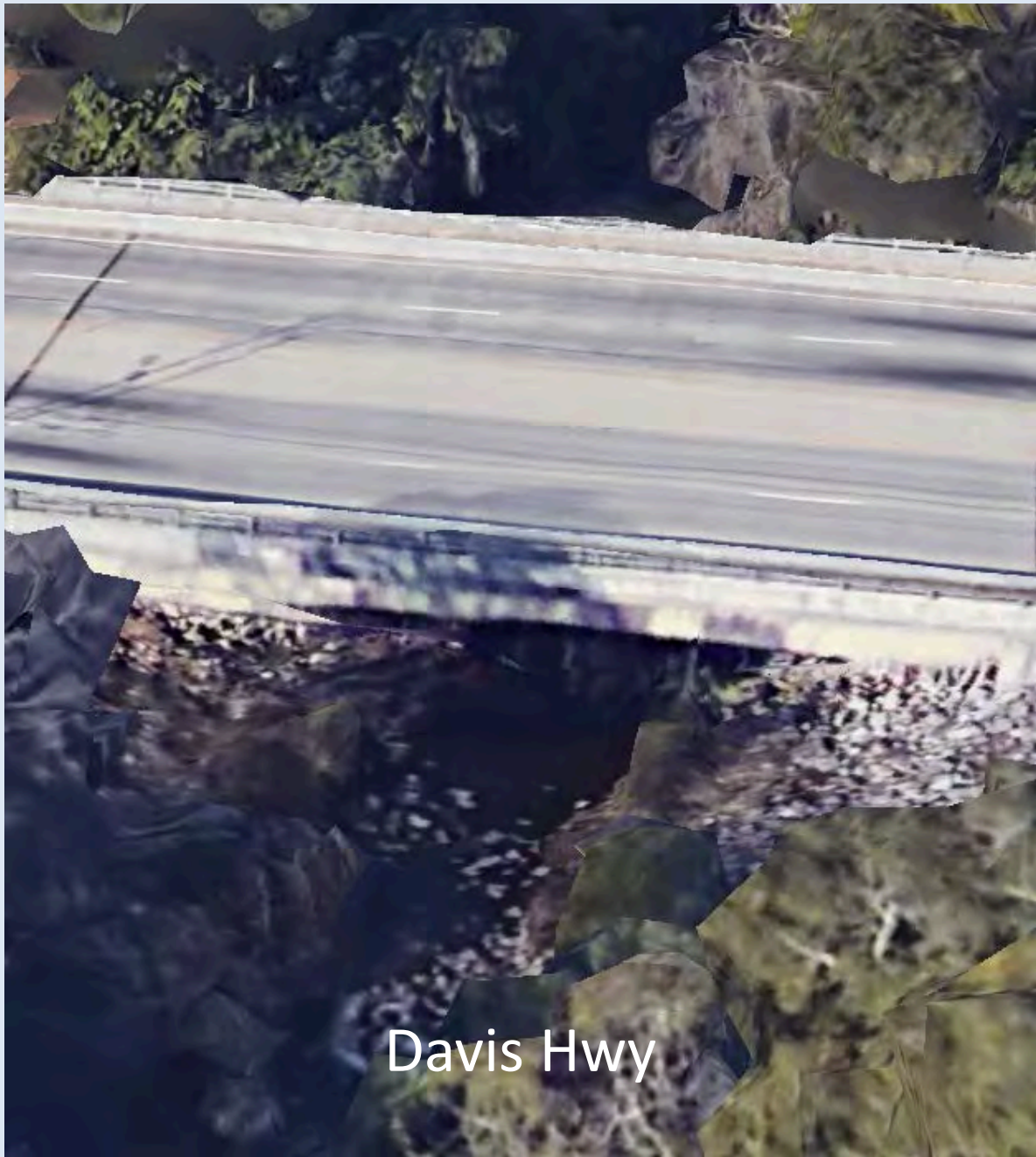
Carpenter Creek

Olive Road





Burgess Road



Davis Hwy



Carpenter Creek

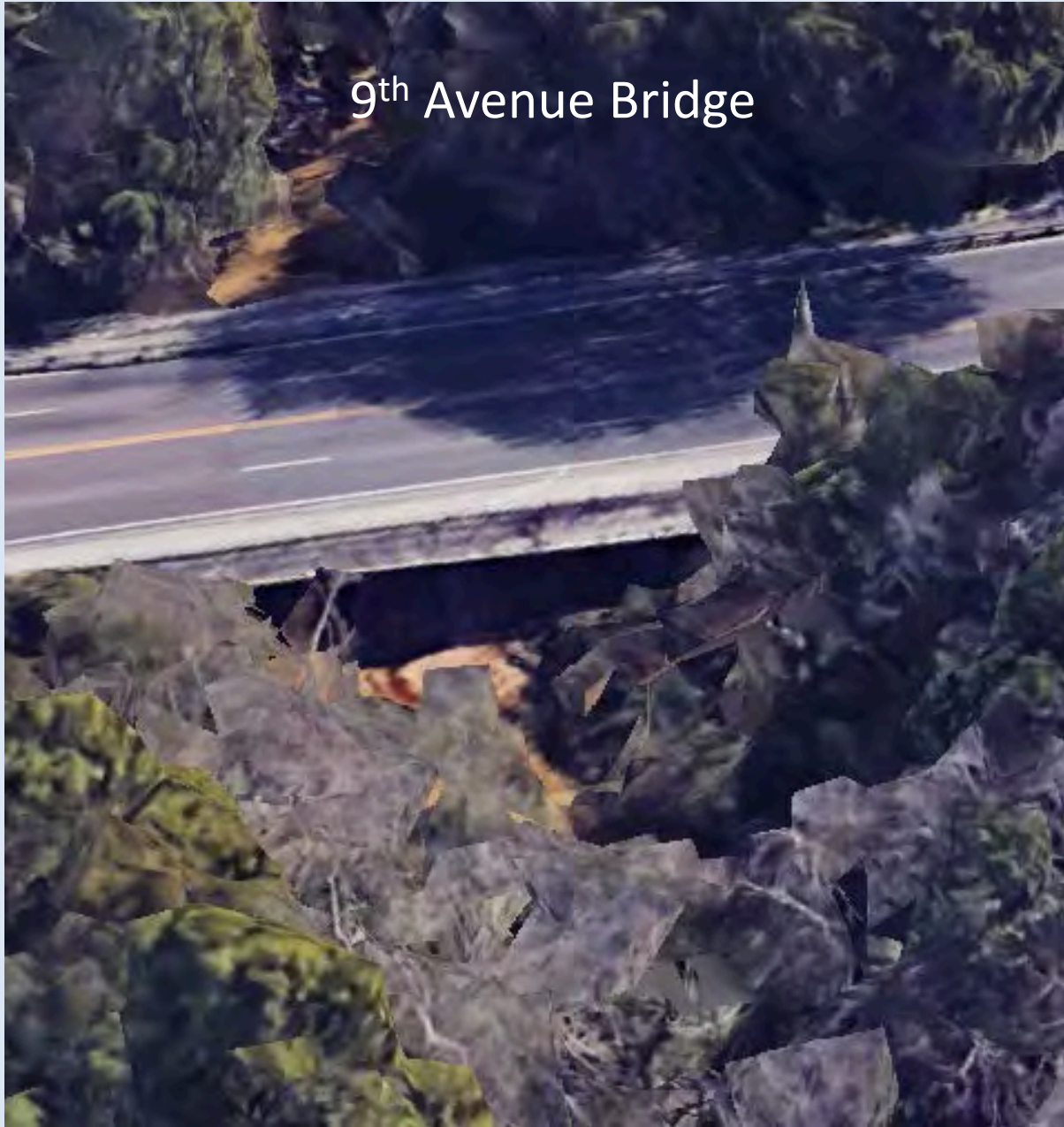
Airport Blvd



Bayou Blvd



9th Avenue Bridge





Pipe Culvert Bridge Design



**Box Culvert Bridge
Design
DOT Project**

Why is there all this
sediment? →











Failed Rip Rap Stabilization Bayou Blvd





publix

HOLY TR...

JCT
296

Garden









Water flows from a storm pipe into Carpenter's Creek after it crosses under North Davis Highway near the intersection of Walton Street in Pensacola on Monday, Feb. 1, 2021.

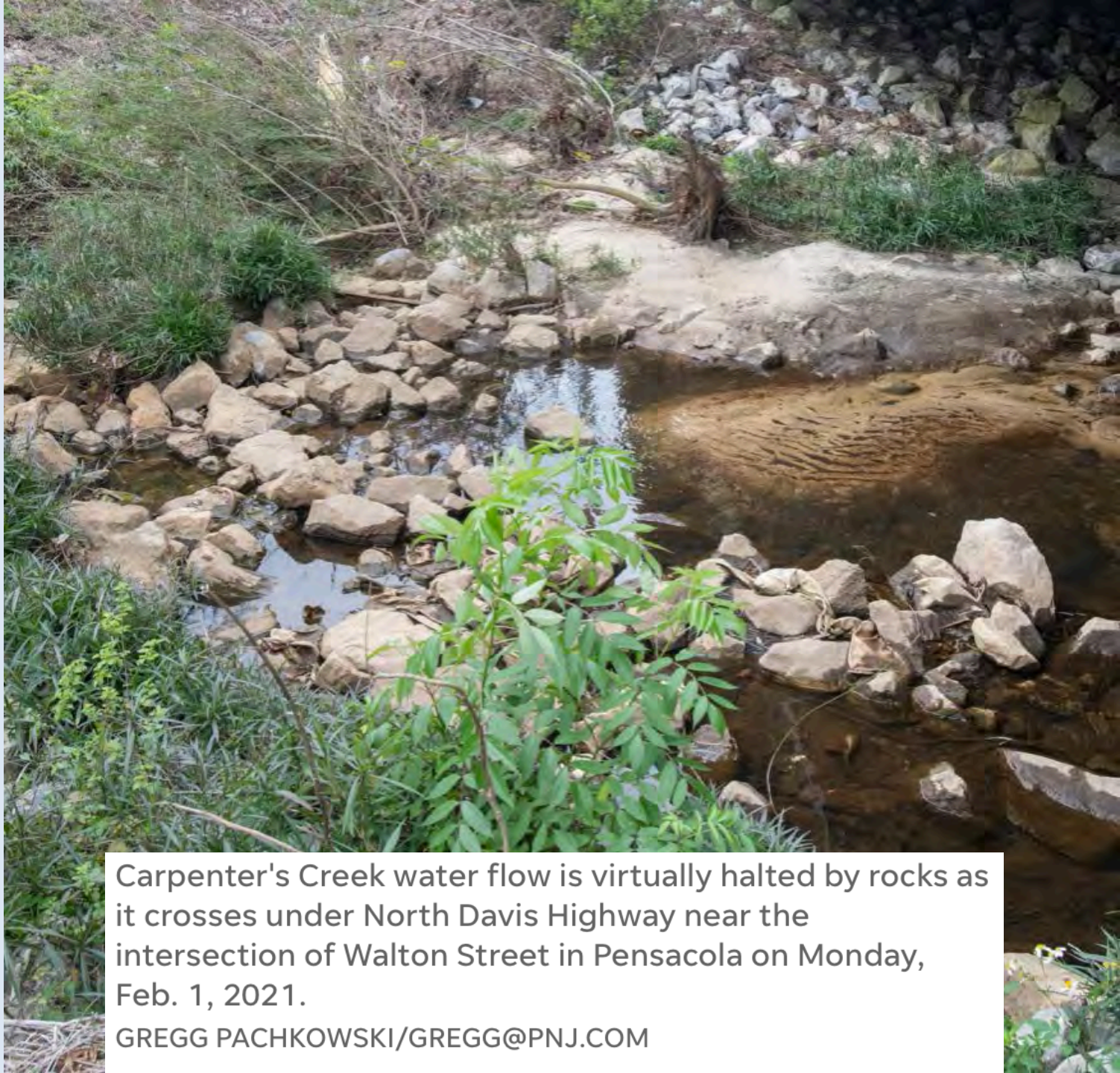


Carpenter's Creek water flow is virtually halted by rocks as it crosses under North Davis Highway near the intersection of Walton Street in Pensacola on Monday, Feb. 1, 2021.

GREGG PACHKOWSKI/GREGG@PNJ.COM



Water flows from a storm pipe into Carpenter's Creek after it crosses under North Davis Highway near the intersection of Walton Street in Pensacola on Monday, Feb. 1, 2021.



Carpenter's Creek water flow is virtually halted by rocks as it crosses under North Davis Highway near the intersection of Walton Street in Pensacola on Monday, Feb. 1, 2021.

GREGG PACHKOWSKI/GREGG@PNJ.COM



Walton Street

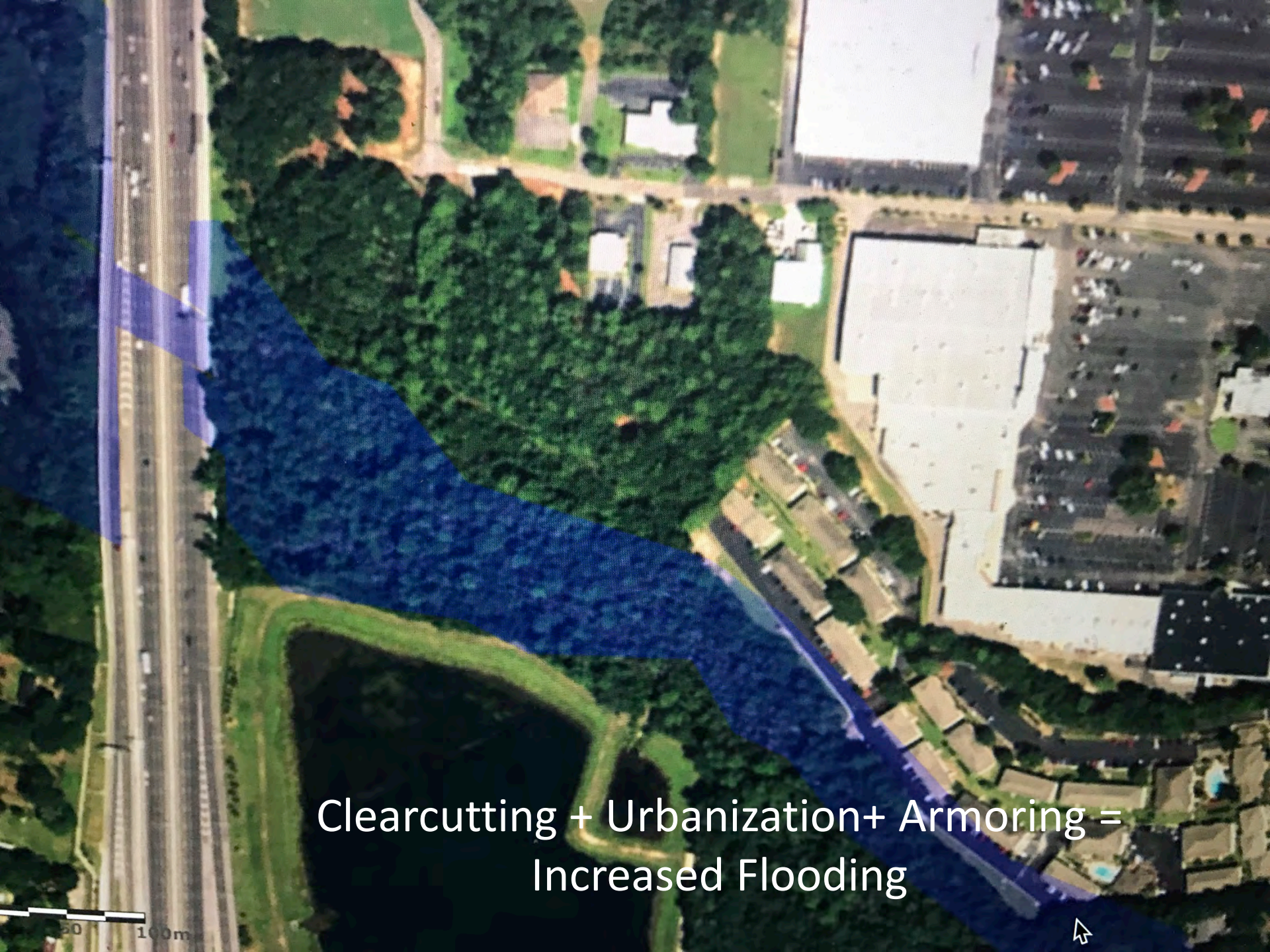
Mass Wasting



Stream Scouring

April 2014 Flood

A view of hazardous flooding along Carpenter's Creek



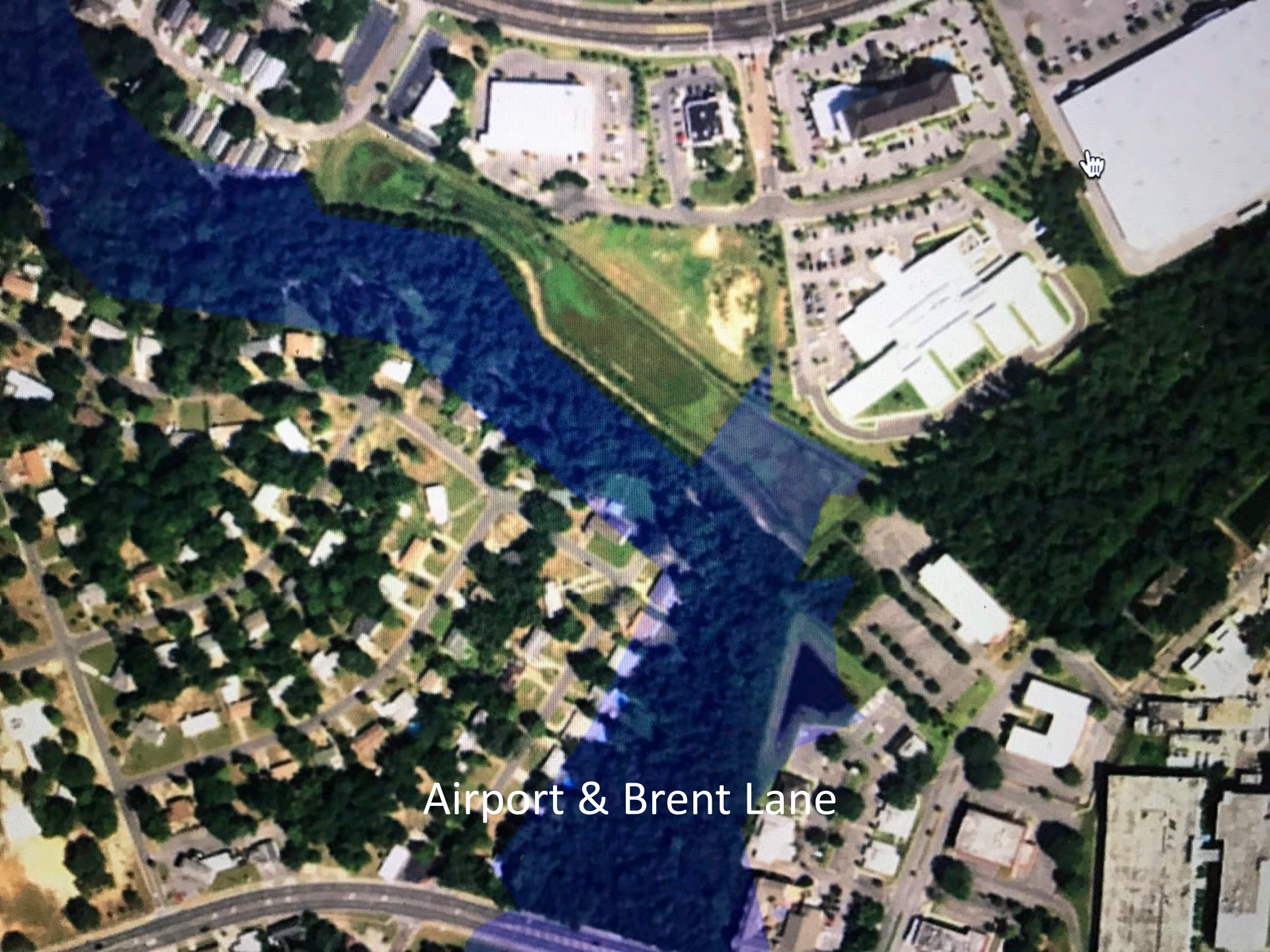
Clearcutting + Urbanization + Armoring =
Increased Flooding

50 100m

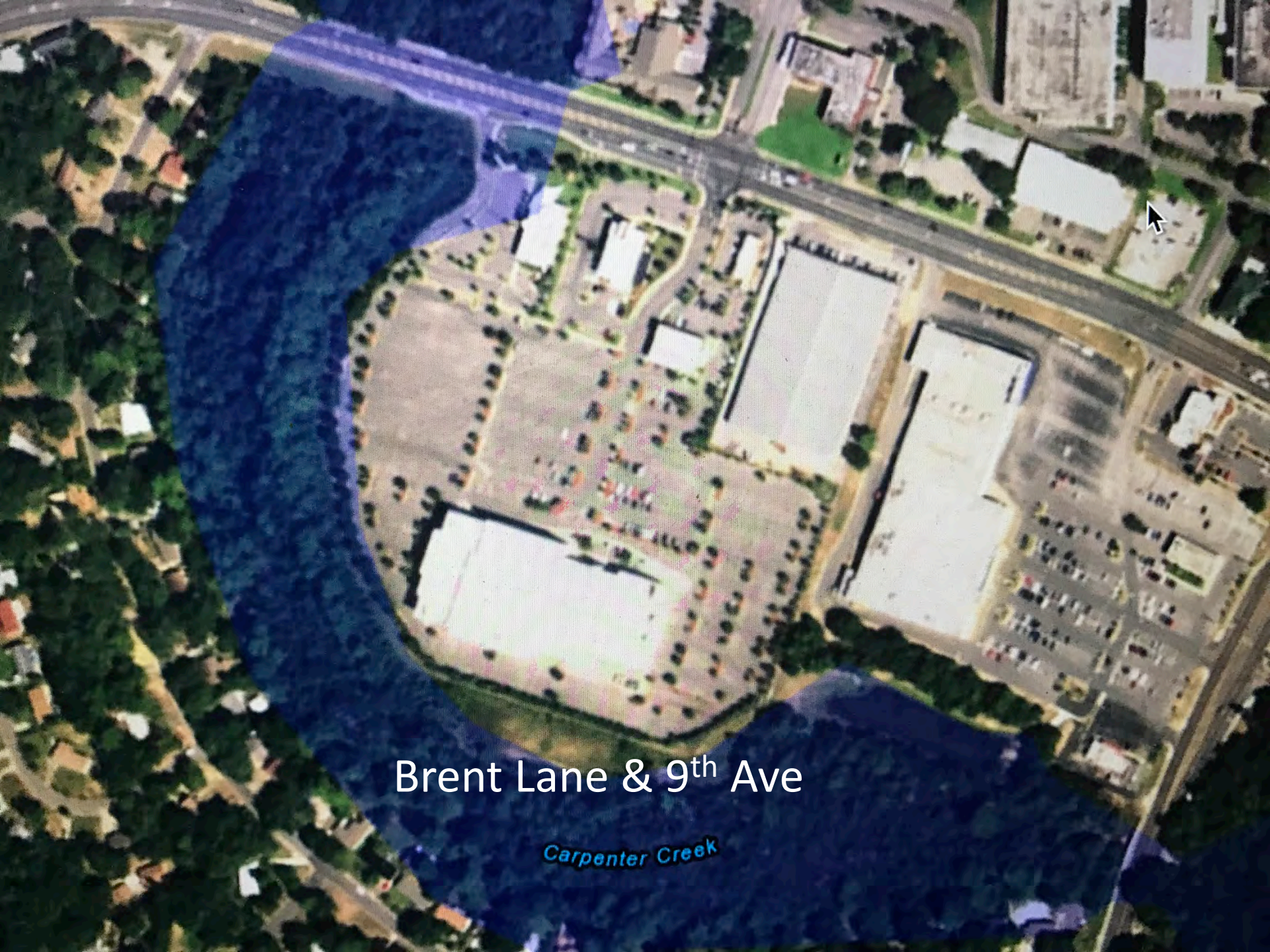




Davis & Airport



Airport & Brent Lane



Brent Lane & 9th Ave

Carpenter Creek

An aerial satellite photograph of a suburban area. A large, irregularly shaped region on the left side of the image is highlighted with a semi-transparent blue overlay. The text "South of 9th Ave" is centered within this blue area. The surrounding landscape includes residential houses with lawns, a large white commercial building with a parking lot, and a road with a median. A mouse cursor is visible in the upper right corner.

South of 9th Ave

An aerial satellite photograph of a residential neighborhood. A large, irregularly shaped area is highlighted in a semi-transparent blue color, representing a creek. The text "Approaching 12th Ave." is overlaid in white on this blue area. The surrounding landscape includes numerous houses with brown roofs, green lawns, and dense green trees. A road, likely 12th Ave, runs diagonally from the bottom right towards the top right. A white mouse cursor is visible on the road in the upper right quadrant.

Approaching 12th Ave.

Carpenter Creek

South of 12th Ave





*Bayou
Texar*

Entering Escambia Bay

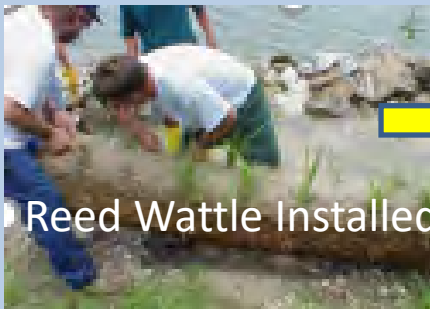
“When you armor a bank, it is protected from erosion, but often times the energy is redirected to the opposite bank downstream, causing damage to someone else’s property.” - Mike Kuttel Jr.



Vegetation for Erosion Control

Vegetative Streambank Stabilization

- planting clumps
- shoots, rhizomes, stem slips
- wattles or reed rolls
- Seeding
- w/ riprap, cellular block, grid confinement systems







The following slides are examples of successful stream stabilization projects using nature. These examples are available in the FEMA Handbook “Engineering with Nature.”





The offsetting of the soil wraps comprising the structural earth wall (SEW) give it its step-like appearance. The logs anchored to the toe of the embankment protect the structure from fast flowing woody debris and provide habitat for migrating fish during high water.



Four of the engineered logjams designed by Herrera Environmental Consultants on the Mashel River outside of Eatonville, WA.



The crib wall will overgrow with vegetation, which will ultimately become the structure itself when the logs finally decay.



Local stabilization project using woody debris



City of Pensacola remediation

RECAP

- We can't control the rain
- Rain events are increasing in both duration and intensity
- Nature is the best force to control volume and velocity of stormwater
- Armoring is best used on straight waterways
- Armoring increases erosion, stream scouring and mass wasting
- Carpenter's Creek is the only recreational water body within the City Limits
- Please help us embrace the rich history and the future of our community recreational water body