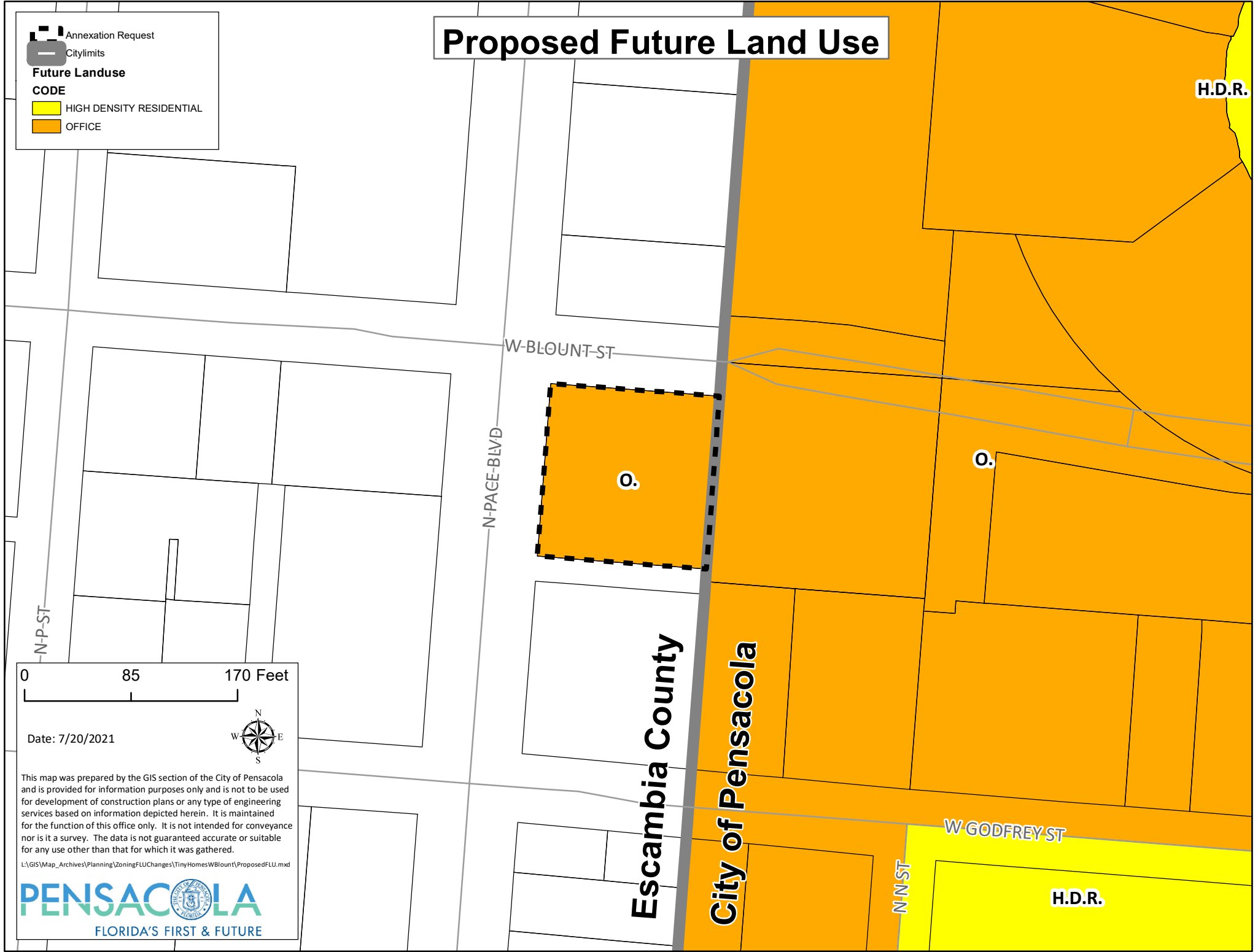


Proposed Future Land Use

■ Annexation Request
— Citylimits

Future Landuse
CODE

■ HIGH DENSITY RESIDENTIAL
■ OFFICE



0 85 170 Feet

Date: 7/20/2021



This map was prepared by the GIS section of the City of Pensacola and is provided for information purposes only and is not to be used for development of construction plans or any type of engineering services based on information depicted herein. It is maintained for the function of this office only. It is not intended for conveyance nor is it a survey. The data is not guaranteed accurate or suitable for any use other than that for which it was gathered.

L:\GIS\Map_Archives\Planning\ZoningFLUChanges\TinyHomesWBlount\ProposedFLU.mxd

