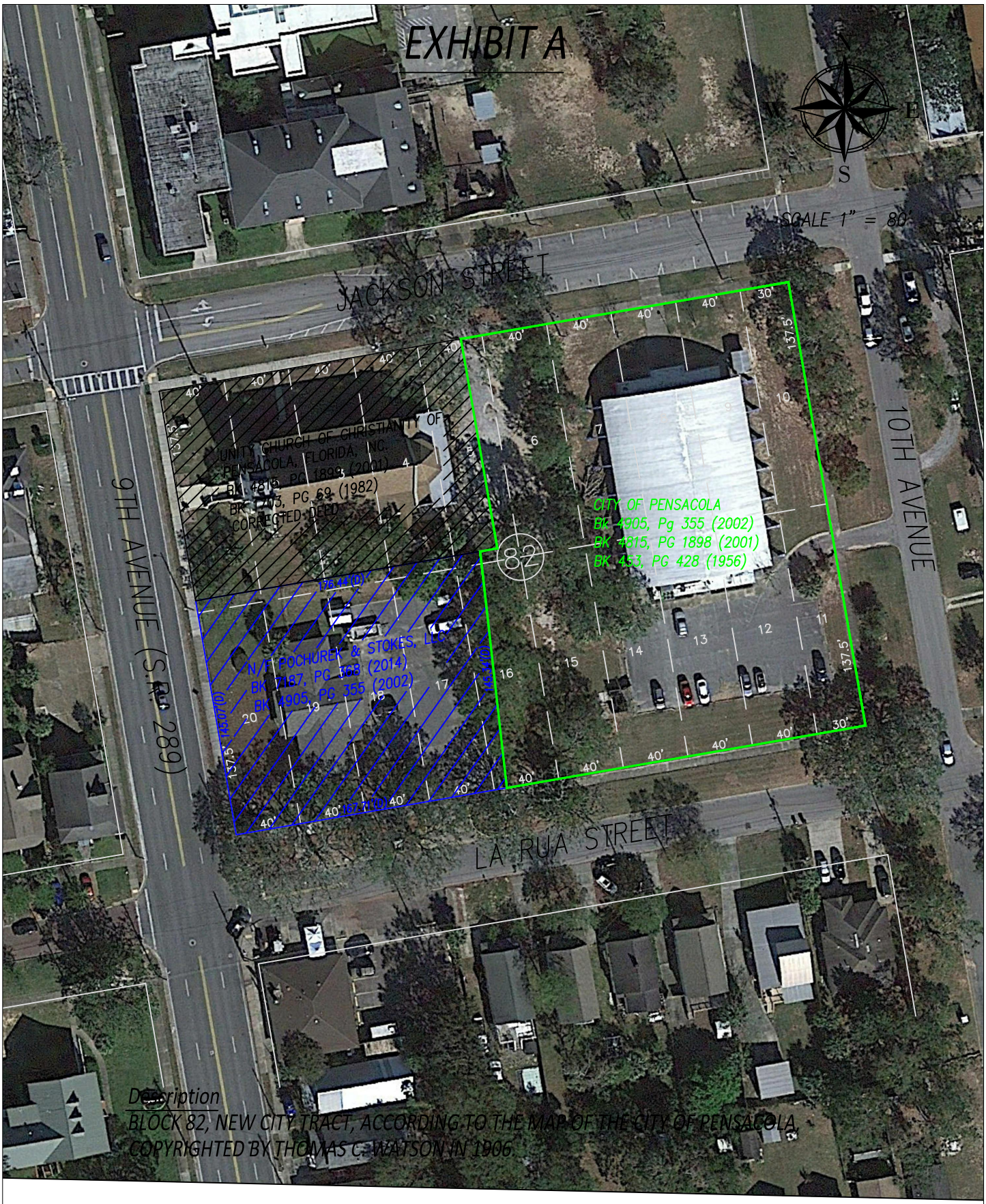


# EXHIBIT A



SCALE 1" = 80'



UNITY CHURCH OF CHRISTIANITY OF  
PENSACOLA, FLORIDA, INC.  
BK 4215, PG 1898 (2001)  
BK 403, PG 69 (1982)  
CORRECTED DEED

CITY OF PENSACOLA  
BK 4905, PG 355 (2002)  
BK 1815, PG 1898 (2001)  
BK 453, PG 428 (1956)

IVF BUCHUREY & STOKES, LLC  
BK 7187, PG 303 (2014)  
BK 4908, PG 355 (2002)

Description  
BLOCK 82, NEW CITY TRACT, ACCORDING TO THE MAP OF THE CITY OF PENSACOLA,  
COPYRIGHTED BY THOMAS C. WATSON IN 1906

CITY OF PENSACOLA  
222 WEST MAIN STREET  
PENSACOLA, FLORIDA

## BLOCK 82, NEW CITY TRACT

THIS SKETCH IS NOT A SURVEY