

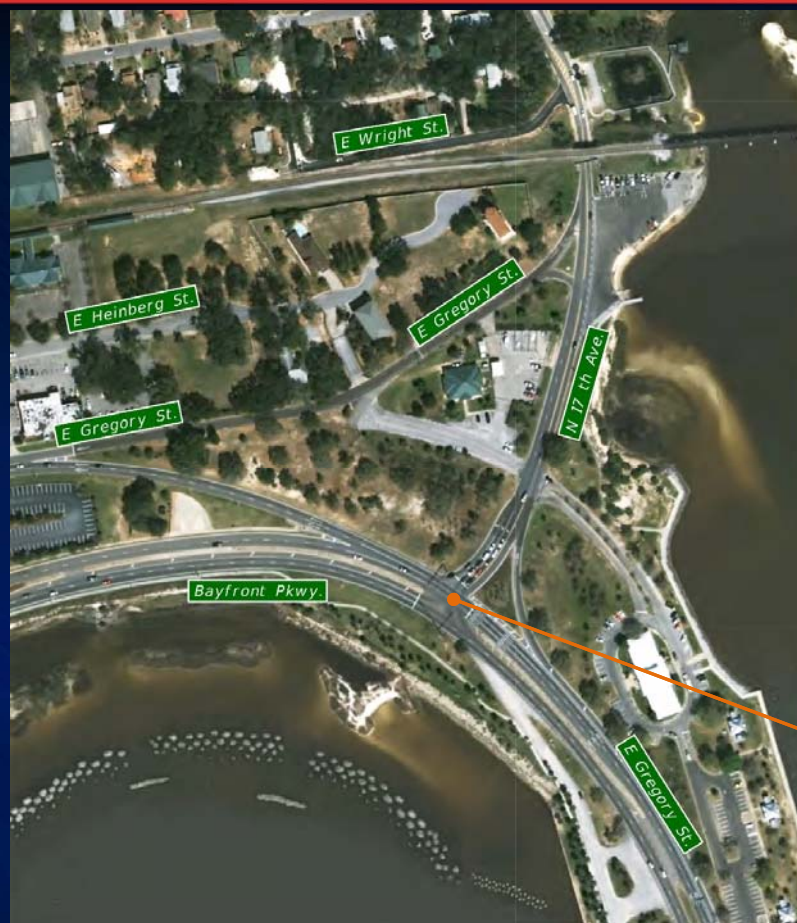
Project Development and Environmental Study (PD&E) Re-Evaluation

S.R. 30 (U.S.) 98 Gregory Street and Bayfront Parkway at 17th Avenue Intersection

Financial Project Number: 437844-1-22-01



Project Location



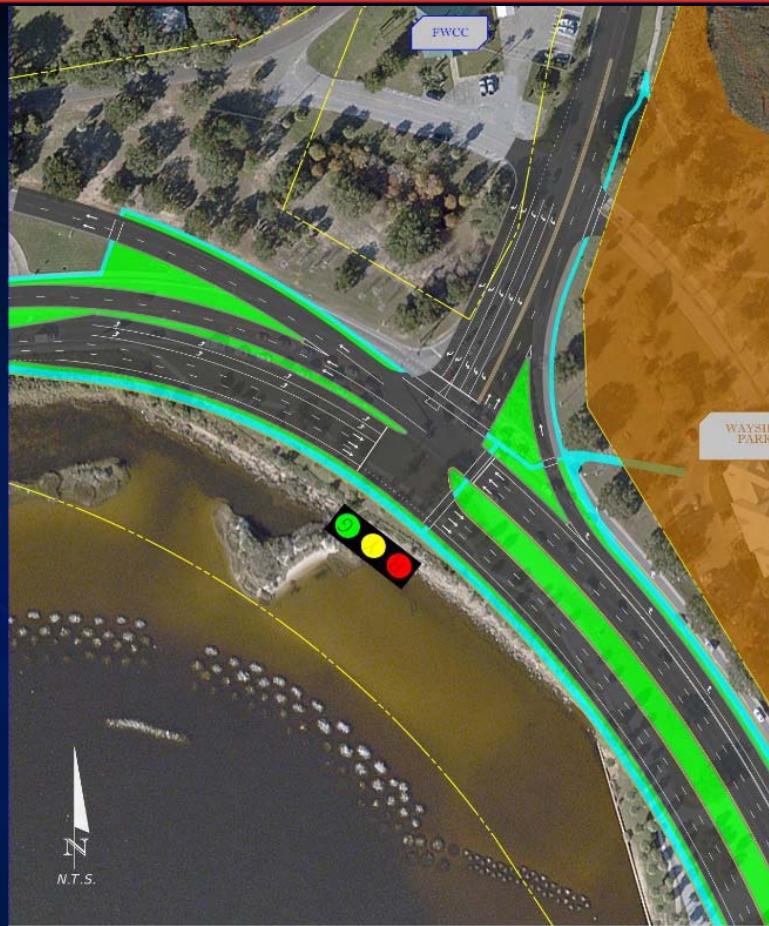
PROJECT LOCATION

Re-Evaluation of the Pensacola Bay Bridge Study



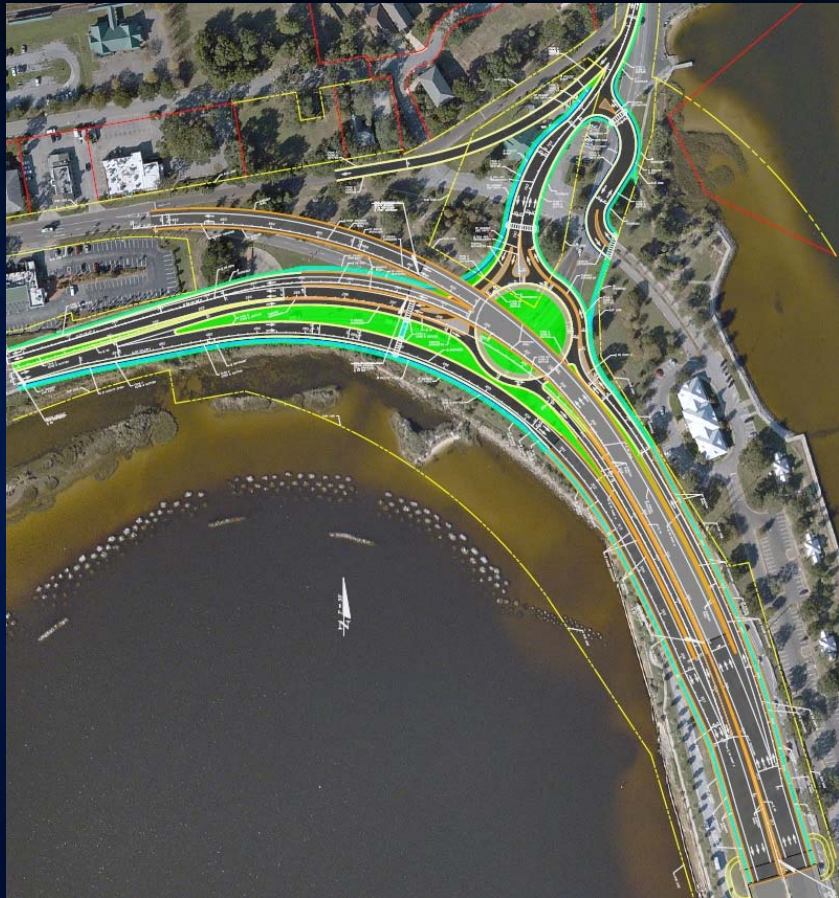
- Re-Evaluate the PD&E Study for the Pensacola Bay Bridge relative to the Intersection of US 98 & Bayfront Pkwy. @ 17th Avenue.
- Introduce an additional alternative for re-evaluation.

Original Intersection Concept

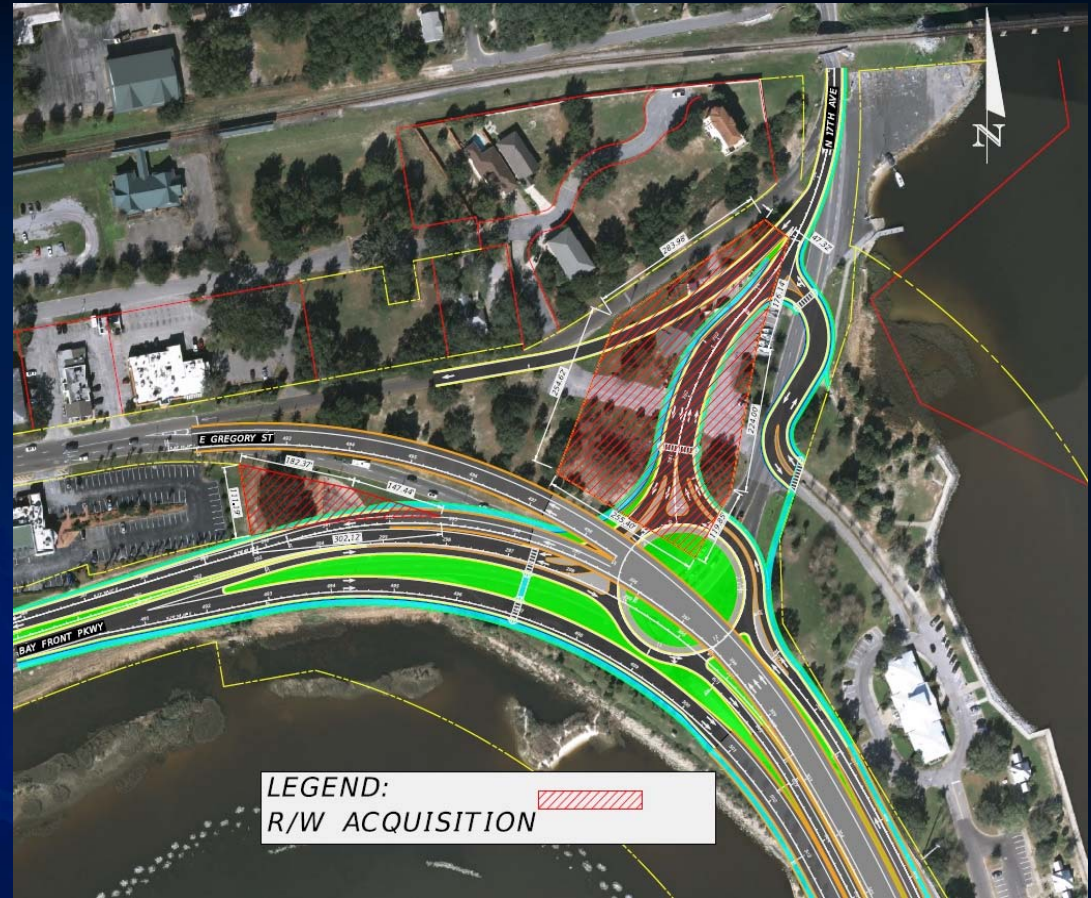


Original Intersection Concept

Concept of Alternative

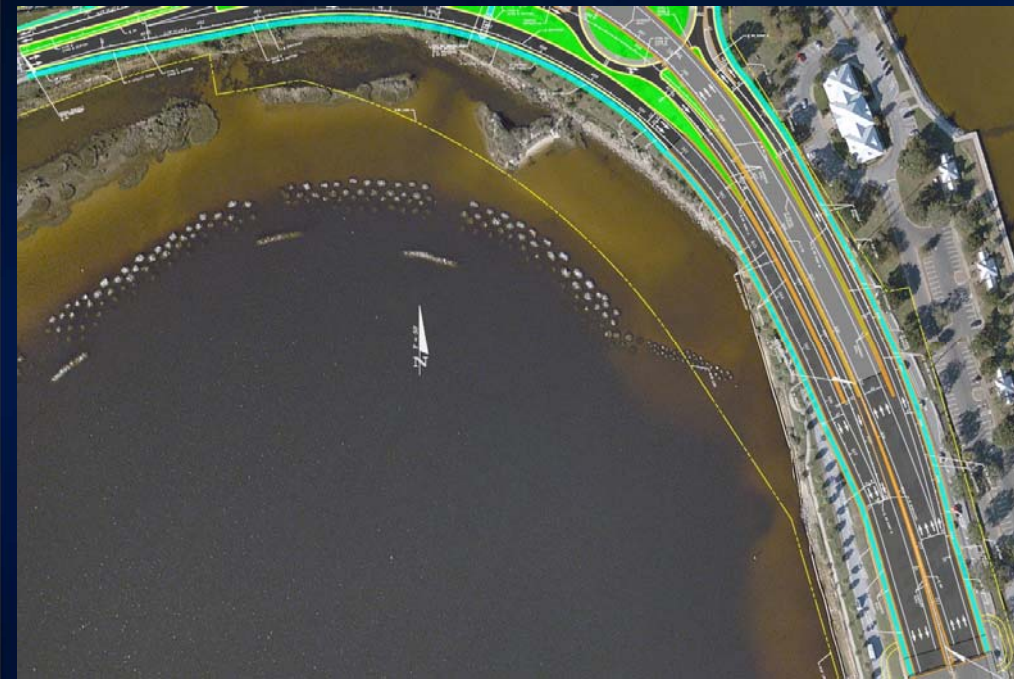


Overall Concept of Alternative



Anticipated Right of Way Impacts

Concept of Alternative

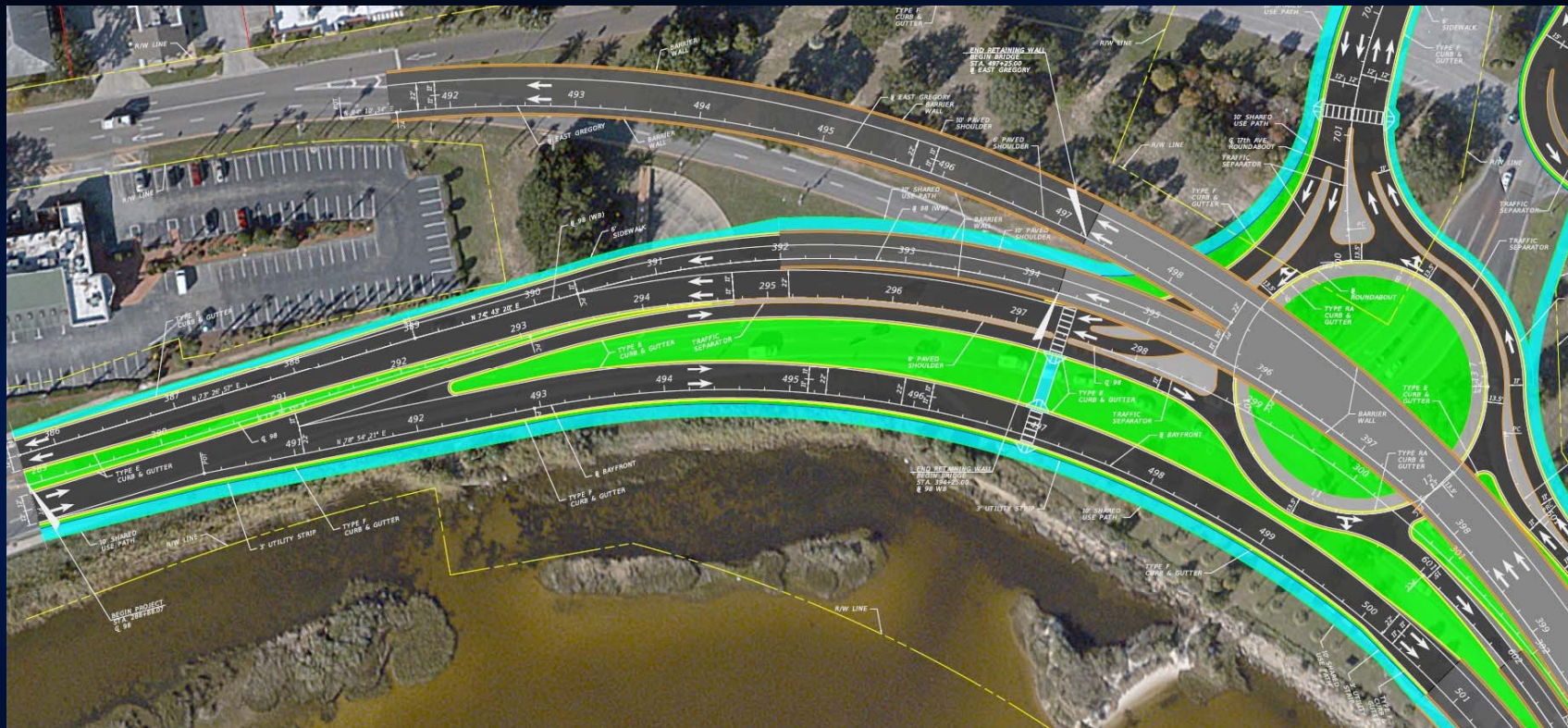


Connection to Pensacola Bay Bridge



Re-Alignment of 17th Avenue

Concept of Alternative



Connection to Bayfront Pkwy and East Gregory Street

Project Process and Schedule



SCHEDULE FOR PD&E STUDY RE-EVALUATION



TRANSPORTATION DEVELOPMENT PROCESS



Proposed Public Meeting Date



- Public Meeting scheduled
 - Tuesday, April 11, 2017 from 5:30 p.m. to 6:30 p.m
Pensacola Grand Hotel
200 East Gregory Street
Pensacola, FL



THANK YOU
