

EPH Canopy Restoration Project



Who We Are

East Pensacola Heights Neighborhood Association is a 501c3 nonprofit created in the spirit of friendship and community with the purpose of promoting the interests and well-being of our neighborhood.

Our mission is to enhance the livability of the neighborhood, build community, and facilitate good communication between EPH and local government.

Why We're Here Today

- ▶ Our neighborhood association is submitting a grant application to the City of Pensacola to fund our canopy restoration project.
- ▶ For our initial request we are respectfully asking for the funding to plant 25 native canopy or understory trees in our community. We would like to have the funding in place for a community planting day to celebrate Florida Arbor Day on January 22, 2022.

2014 City of Pensacola Tree Canopy Study Recommendations

7.0 Recommendations

7.1. Optimizing Tree Canopy through Planting

1. **Establish measurement of success and set planting priorities.** All plantings should follow American National Standard-ANSI A300 Standard Practices for Tree Care Operations.
2. **Planting the easy areas first.** The easy areas are public owned spaces needing no or limited modifications to the site including adequate soil type and volume for minimum inputs after establishment. The easier locations have the greater chance of successful trees at a lower price. (Urban, J. 2008).
3. **Expand street tree planting by designing space for trees.** Incorporate tree species, soil properties, soil volume and drainage in initial design. Tree size is directly related to planting space, no matter the tree species. Share rooting space in continuous planting strips like in a road median. Connect tree pits to lawn area to share planting space in commercial landscape.
4. **Encourage planting on residential property** through education and street tree planting programs placing priority on neighborhoods willing to provide supplemental early tree care. Target and encourage “right tree right place” plantings in areas with lower canopy densities (Figure 7).
5. **Maintain natural areas with appropriate native species** through restoration plantings and removal of exotic invasive plants.

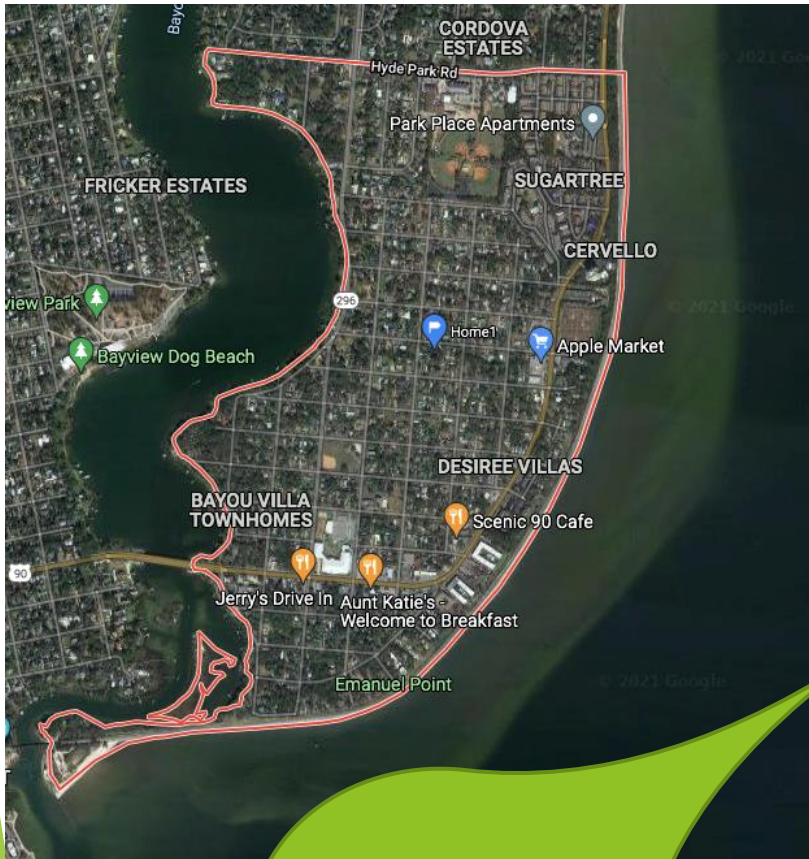
7.2 Optimizing Canopy through Maintenance and Species Diversity

6. **Conduct rotational tree assessments** addressing maintenance, planting and removal. All tree care maintenance should follow American National Standard ANSI A300 for tree care. Improving tree structure will increase wind resistance (Duryea et al. 2000) and reduce tree risk.
7. **Maintain a tree database** with tree inventory to promote tree structure improvements, mitigate risk and report maintenance concerns.
8. **Tree maintenance personnel** should have a reasonable understanding of indicators that determine risk factors affecting the health and structure of the trees.
9. **Selecting the right tree for space** and making the space right for the tree. Species should be selected by their ability to perform the desired functions and aesthetic contributions to the design. Long-term maintenance and resources for establishment period should be factored into design.
10. **Increase species diversity**, plant species that have longer average life spans and medium to high wind resistance. If possible work with local and regional nurseries to grow unique and desirable tree species not commercially available.
11. **Foster a tree education program** providing city residents with information about tree preservation policies, the benefits trees provide, and the importance of tree canopy.

7.1. Optimizing Tree Canopy through Planting

4. **Encourage planting on residential property through education and street tree planting programs placing priority on neighborhoods willing to provide supplemental early tree care.** Target and encourage “right tree right place” plantings in areas with lower canopy densities (Figure 7).

Why East Pensacola Heights?



- ▶ We are surrounded by water on three sides making us an environmentally sensitive area and vital to the long-term maintenance of biological diversity, water quality, and soil health in the Bayou Texar Watershed.
- ▶ We have lost significant tree canopy over the years as documented by the 2014 Urban Tree Canopy Study.

And yes, this study is out-of-date. The problem is much worse now!

The Case for Green Infrastructure

Percent of Samples Requiring a Health Advisory

Body of Water	2018	2019	2020
Bayou Texar	44%	32%	49%
Bayou Chico	60%	56%	60%
Bayou Grande	47%	28%	47%
Sanders Beach	11%	9%	11%
Park West Pensacola Beach	0%	4%	0%
Casino Beach Pensacola Beach	0%	4%	0%

Critical Green Infrastructure Candidates

Higher than average rainfall

Canopy Loss

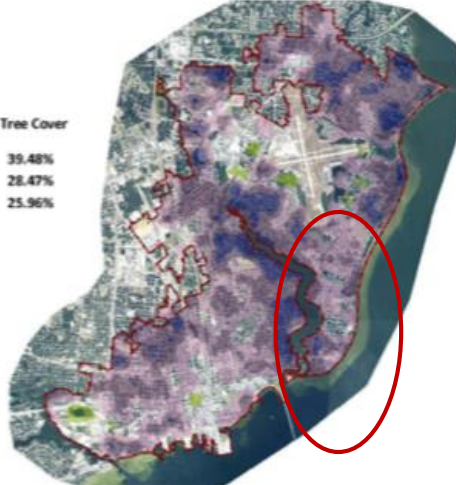
Highest Loss 2003 to 2007 33% City Wide Canopy Loss

Dark Purple Represents Highest Loss

Urban Tree Canopy Change
2003 to 2004
Pre- Ivan to Post Ivan



Urban Tree Canopy Change
2003 to 2007
Pre- Ivan to Post Dennis



Percentage Tree Cover

- 2003 39.48%
- 2004 28.47%
- 2007 25.96%



*Data Source: Escambia County, DOT, USDA, City of Pensacola

*Canopy Change map generated through a kriging interpolation function of 6,515 sample points visually classified with aerial orthophotos taken in 11/03, 12/04 & 04/07

Plenty of
dark purple
in our
community!

Canopy Loss

East Gonzalez Street
EPH



April 2013



September 2021

Canopy Loss

East Lee Street
EPH



April 2013

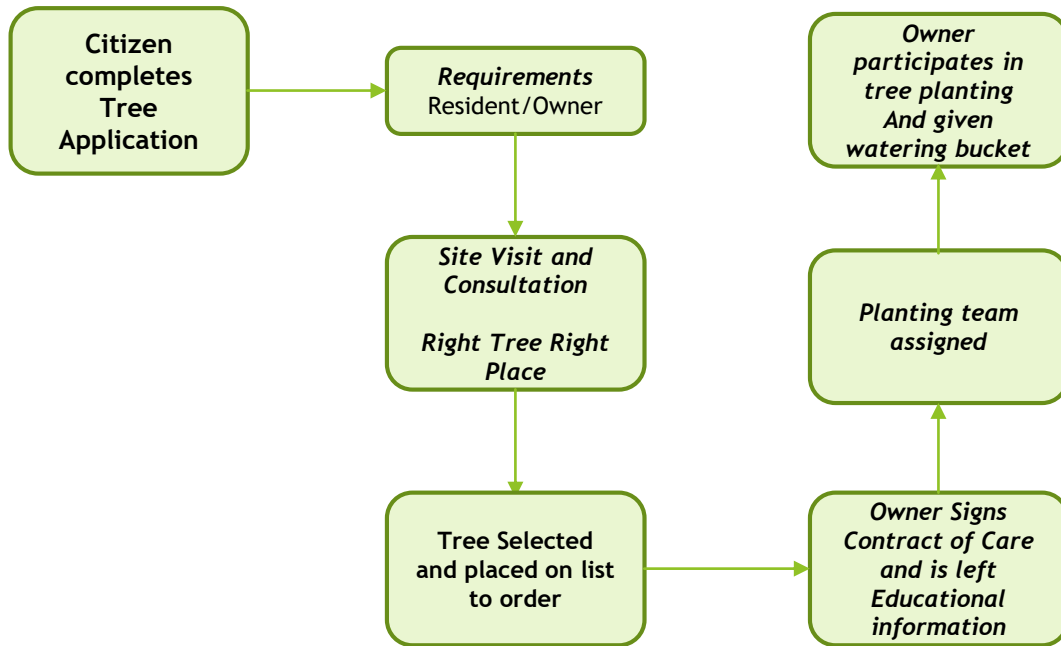


September 2021

Why EPH Neighborhood Association?

- ▶ East Pensacola Heights Neighborhood Association reformed due to the interest in this community in restoring our tree canopy.
- ▶ We have a successful tree planting project under our belt.
- ▶ We are the third largest neighborhood association in Pensacola in terms of members and are growing our membership. Our community is made up of engaged civic-minded people.

Application Process Draft



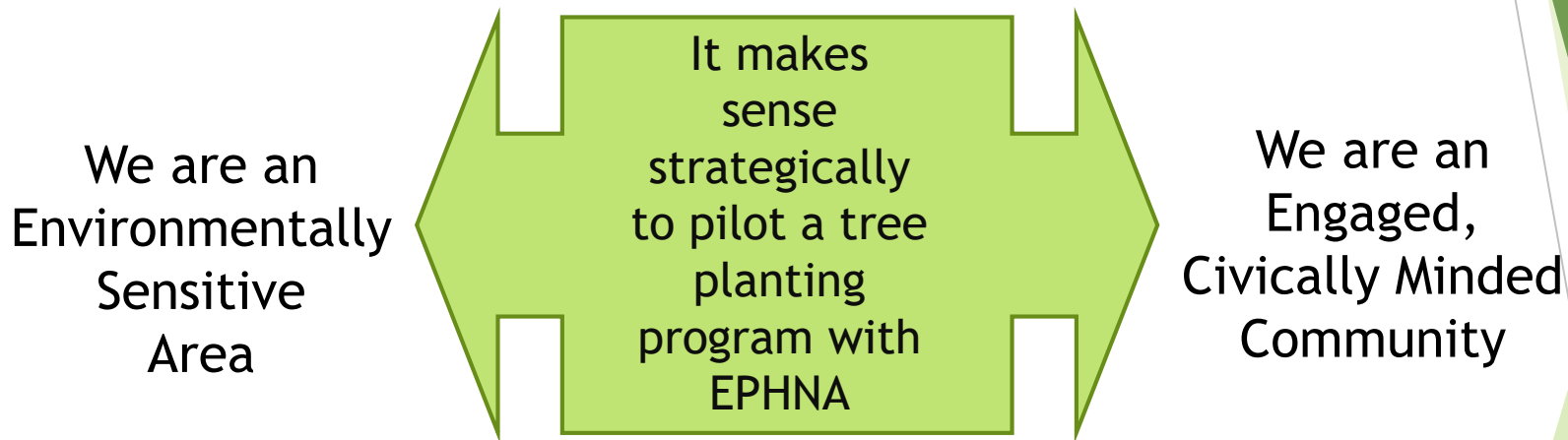
We are developing appropriate processes for project success!!

Tree Programs in Florida Cities

- ▶ Jacksonville - Has an urban forestry department with three urban foresters and a city arborist, a free plant-a-tree program for city right-of-ways.
- ▶ Miami- Dade - Street Tree Program
- ▶ Tampa - Community Tree Planting Program is free and provides individuals and neighborhood associations with trees for planting on City land, greenways, and street right of ways. Established in 1997.
- ▶ Orlando - Robust street tree program with innovative marketing.
- ▶ Tallahassee - Adopt-A-Tree Program - Eligible homeowners living within the City limits may request up to 2 trees to be planted in the front yard within 100' of the centerline of the roadway and agree to keep each tree watered for one (1) year.

Pilot Program Development

A great opportunity for the city to develop a program with a built in feed-back loop!



Plus we are willing to do the work!

Our Project Partners

Mission driven collective action

▶ City of Orlando

- ▶ Kathy Hall, Program Manager Street Tree Program

Professional Advise

▶ Miami/Dade

- ▶ Nikki Anderson, Program Manager Neat Street Program

Professional Advise

▶ Emerald Coast Utility Authority

- ▶ Larry Williams, District 3 Board Member

Compost

▶ Boys Scouts of America Gulf Coast Council

- ▶ Troup 425, Jim Zettler, Scout Master

Volunteers

▶ University of Florida Extension Service

- ▶ Beth Bolles, Extension Agent, Environmental Horticulture

Train the trainer

▶ Florida Native Plant Society Long Leaf Pine Chapter

- ▶ Duane Tant, Member and expert in the coastal sand plain ecosystem

Professional Advise

Native Trees Perform Better

Because native plants are adapted to local environmental conditions, they require far less water, **saving time, money,** and perhaps the most valuable natural resource, water. In addition to providing vital habitat for birds, many other species of wildlife benefits as well.

Canopy Trees

- ▶ Southern Live Oak
- ▶ Overcup Oak
- ▶ Loblolly Pine
- ▶ Longleaf Pine
- ▶ Bald Cypress
- ▶ Riverbirch
- ▶ Summer Red Maple

Understory Trees

- ▶ Dogwood
- ▶ Red Buckeye
- ▶ Red Bud
- ▶ Sassafras
- ▶ Persimmon

Society grows great when
old men plant trees whose shade
they know they shall never sit in.

- *Greek Proverb*

Thank you!