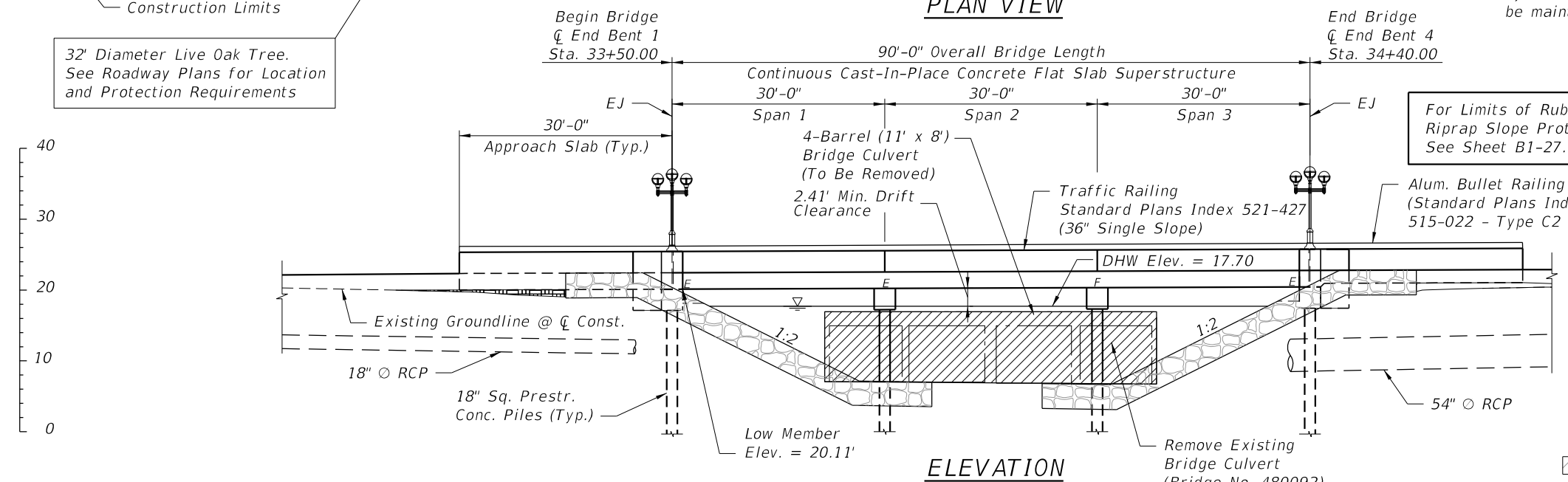
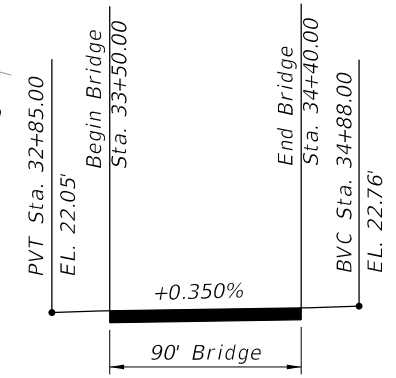


Note: The existing Vortex System (manholes, piping, & mitered end sections) shall remain in place and in service. See Utility Adjustment Drawings for details of disposition of other utilities.

HORIZONTAL CURVE DATA CURV2
 PI STA. = 33+67.95
 Δ = 15° 06' 31" (RT)
 D = 3° 44' 41"
 T = 202.90
 L = 403.45
 R = 1,530.00
 PC STA. = 31+65.05
 PT STA. = 35+68.50
 e = NORMAL CROWN

TRAFFIC DATA
 2014 AADT = 26,000
 2042 AADT = 34,400
 K = 9.0%
 D = 56%
 T = 1.7%
 Design Speed = 40 mph
 Posted Speed = 40 mph



LEGEND

E = Expansion Bearing

F = Fixed Bearing

EJ = Location of Expansion Joint in Bridge Deck

PGL = Profile Grade Line

⊙ = Boring Location

▨ = Removal

REVISIONS					
DATE	BY	DESCRIPTION	DATE	BY	DESCRIPTION

M. David Finley, P.E.
 P.E. LICENSE NUMBER 40119
 POND & COMPANY
 1300 RIVERPLACE BLVD. STE 210
 JACKSONVILLE, FL 32207

DRAWN BY: J.F. 1-18
 CHECKED BY: R.K. 1-18
 DESIGNED BY: R.K. 1-18
 CHECKED BY: D.M. 1-18

STATE OF FLORIDA
 DEPARTMENT OF TRANSPORTATION

ROAD NO. SR 289 COUNTY ESCAMBIA FINANCIAL PROJECT ID 437178-1-52-01

SHEET TITLE: PLAN AND ELEVATION

PROJECT NAME: SR 289 OVER CARPENTERS CREEK

BRIDGE NO. 480293

REF. DWG. NO. SHEET NO. B1-01

THE OFFICIAL RECORD OF THIS SHEET IS THE ELECTRONIC FILE DIGITALLY SIGNED AND SEALED UNDER RULE 61G15-23.004, F.A.C.