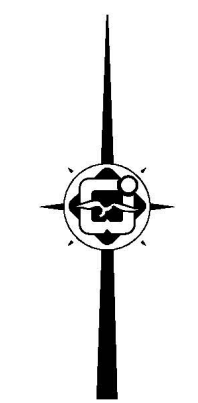
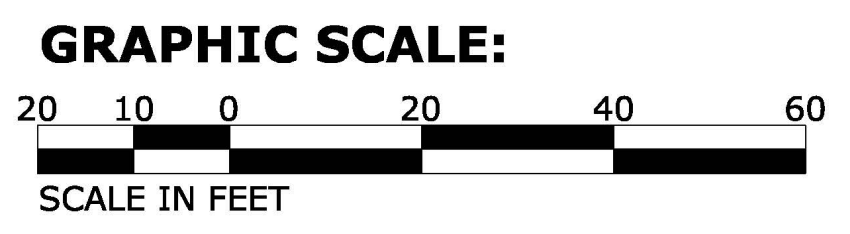
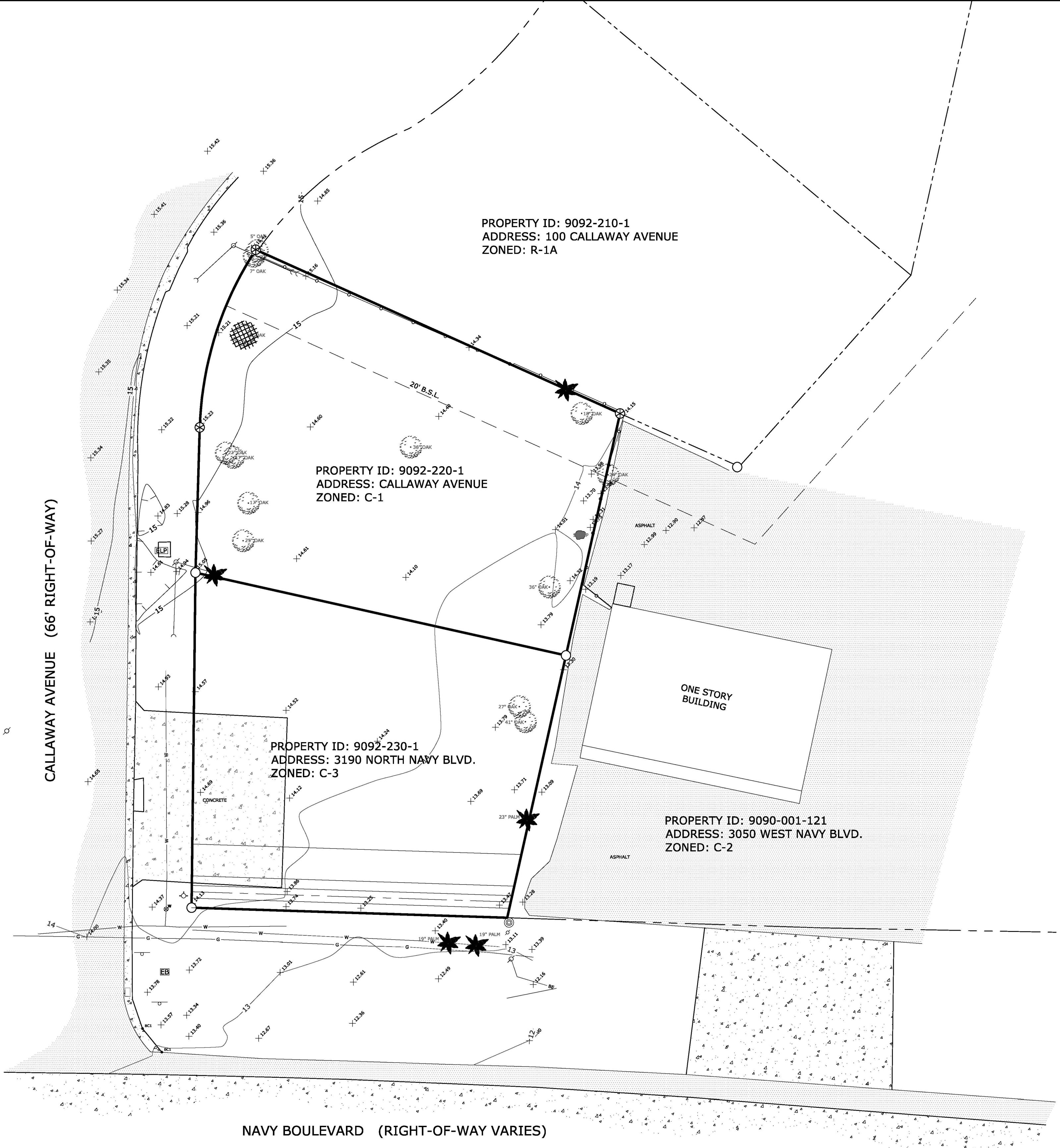


H:\2015\150088 - Centennial Imports Parking Lot Expansion\Civil\20160318 - Complete Civil Drawings.dwg, 01/17/15 12:56:13 PM, Bluebeam PDF



- LEGEND:**
- ELECTRIC BOX
 - POWER POLE
 - GUY WIRE ANCHOR
 - 36" CONCRETE UTILITY POLE
 - WATER VALVE
 - FIRE HYDRANT
 - SIGN
 - BURIED ELECTRIC LINE
 - WATER LINE
 - GAS LINE
 - 1" IRON PIPE FOUND
 - 1/2" CAPPED IRON ROD LB "CORP7277"
 - 1/2" CAPPED IRON ROD ILLEGIBLE

FABRE ENGINEERING, INC.
 DBA
FABRE ENGINEERING & SURVEYING
 ENGINEERS ♦ PLANNERS ♦ SURVEYORS

119 GREGORY SQUARE PENSACOLA, FLORIDA 32502
 TELEPHONE: 850-433-6438 FAX: 850-434-7842

L.B. NO. 0006879 E.B. NO. 0007215

**EXISTING CONDITIONS
&
TOPOGRAPHY**

This Drawing is the Property of FABRE ENGINEERING, INC. and is not to be reproduced in whole or in part without the written consent of FABRE ENGINEERING, INC. If not, the user agrees to indemnify and hold FABRE ENGINEERING, INC. harmless from all claims, damages, and expenses, including reasonable attorneys' fees, that may be incurred by FABRE ENGINEERING, INC. as a result of such reproduction.

NOT Released for Construction By: _____ Date: _____
 As-Built / Record Drawing By: _____ Date: _____

CENTENNIAL IMPORTS
 PARKING LOT EXPANSION
 FOR
 CENTENNIAL IMPORTS OF PENSACOLA

ESCAMBIA COUNTY FLORIDA

Revisions:

Frank J. Fabre, P.E.

P.E. #15967

Designed By: MER
 Drawn By: JMC
 Checked By: MER

Date: 10-20-2015
 Job Number: 150088
 File Name: SEE LEFT
 Sheet: **G-201**