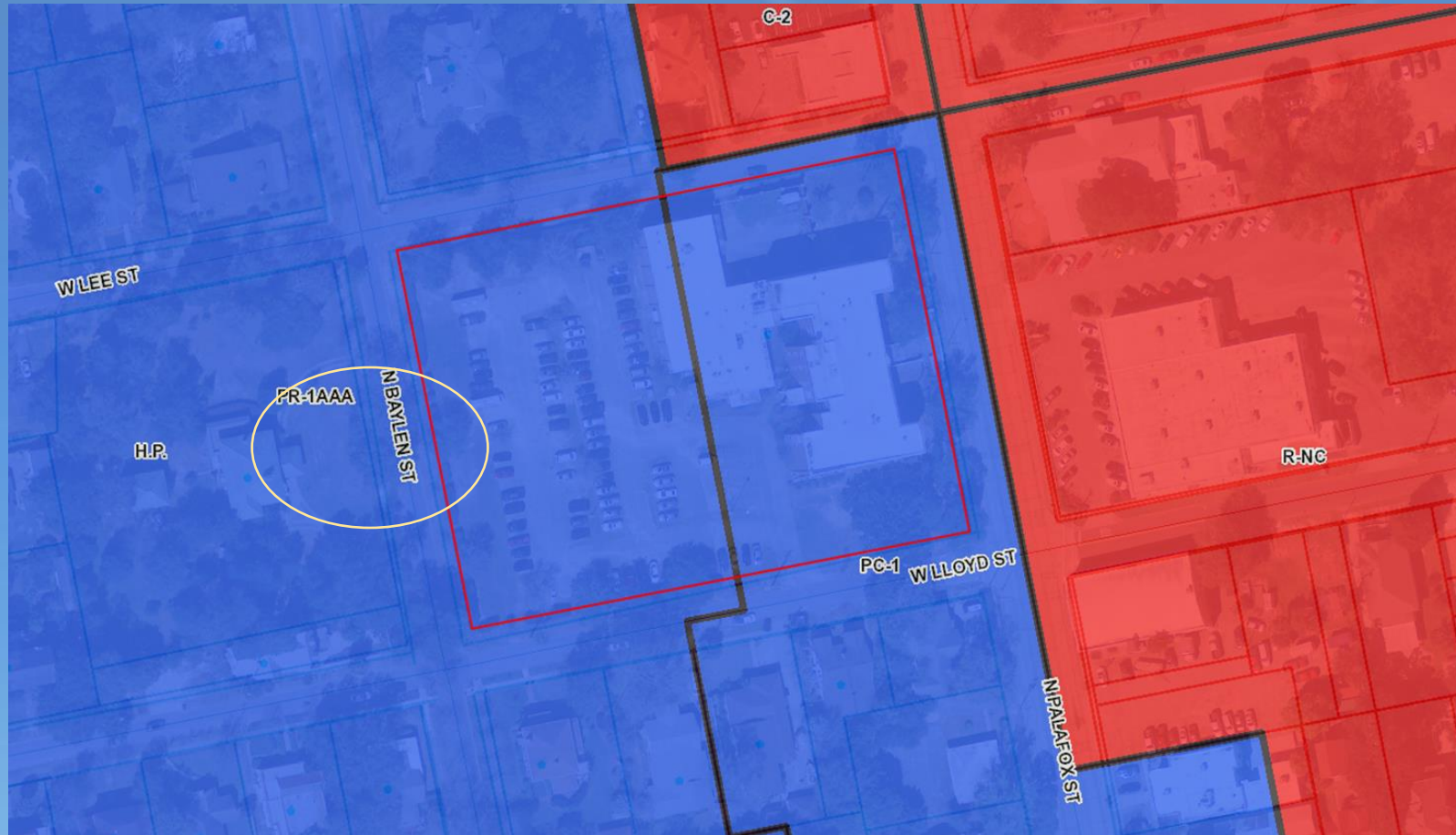


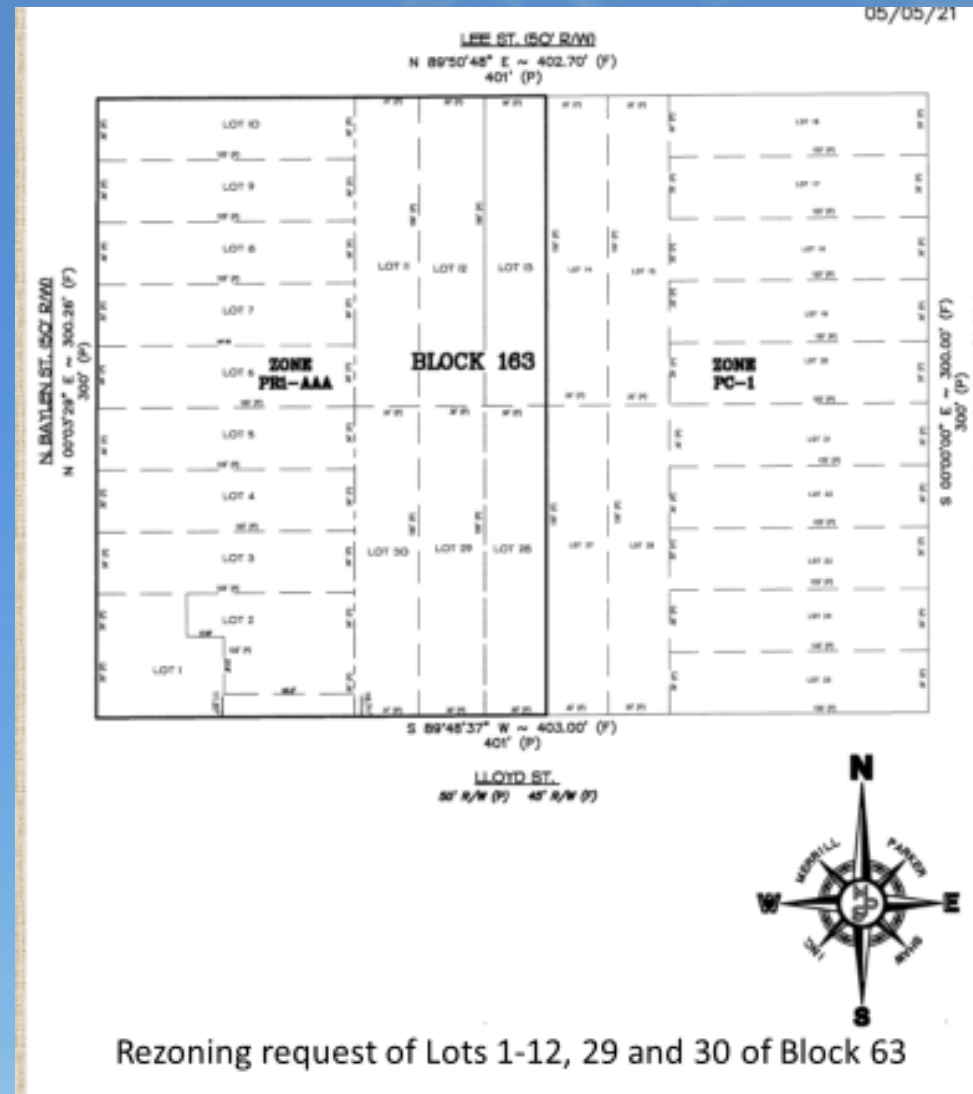
REQUEST FOR ZONING MAP AMENDMENT 1301 NORTH PALAFOX



REQUEST FOR ZONING MAP AMENDMENT 1301 NORTH PALAFOX

- **APPLICANT ORIGINALLY REQUESTED PC-1 FOR THE ENTIRE BLOCK**
- **PLANNING BOARD RECOMMENDED DENIAL OF THE REQUEST IN A 5-2 VOTE (PREFERRED TRANSITIONAL ZONE).**
- **APPLICANT HAS FORMALLY REQUESTED TO AMEND REQUEST TO PR-2 FOR THE PORTION OF THE BLOCK CURRENTLY ZONED PR-1AAA – SHOULD COUNCIL OPT TO APPROVE THE MORE RESTRICTIVE ZONING DESIGNATION.**

REQUEST FOR ZONING MAP AMENDMENT 1301 NORTH PALAFOX



REQUEST FOR ZONING MAP AMENDMENT 1301 NORTH PALAFOX



REQUEST FOR ZONING MAP AMENDMENT 1301 NORTH PALAFOX



REQUEST FOR ZONING MAP AMENDMENT 1301 NORTH PALAFOX



REQUEST FOR ZONING MAP AMENDMENT

1301 NORTH PALAFOX

ZONING PER THE HISTORICAL ZONING MAPS:

1946 - THE ENTIRETY OF BLOCK 163 WAS ZONED R-2.

1957 - THE WESTERN HALF OF BLOCK 163 WAS ZONED R-1AAA; THE EASTERN HALF WAS ZONED C-3.

1974 - NORTH HILL PRESERVATION DISTRICT WAS ESTABLISHED.

1978 - THE ZONING DISTRICTS WITHIN THE NORTH HILL PRESERVATION DISTRICT (NHPD) WERE ESTABLISHED. THE EASTERN HALF WAS ZONED AS PC-1 (THE ONLY COMMERCIAL ZONING DISTRICT WITHIN THE NHPD).

THE PK YONGE BUILDING WAS CONSTRUCTED IN 1921.

THE CITY OF PENSACOLA'S FIRST ZONING ORDINANCE WAS WRITTEN IN 1946. PUBLIC SCHOOLS ARE ALLOWED BY RIGHT WITHIN ALL ZONING DISTRICTS.