
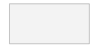

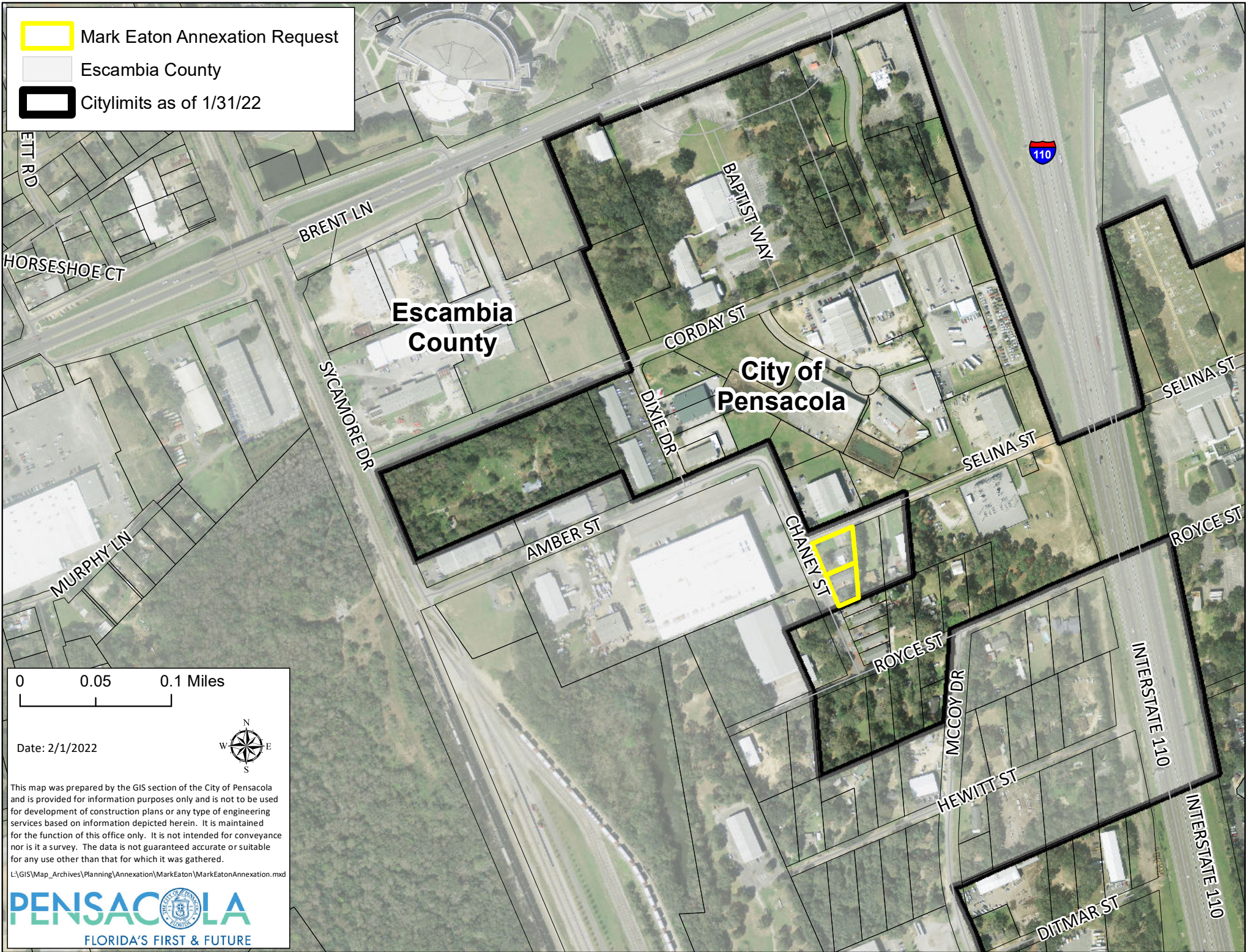


-  Mark Eaton Annexation Request
-  Escambia County
-  Citylimits as of 1/31/22



0 0.05 0.1 Miles



Date: 2/1/2022

This map was prepared by the GIS section of the City of Pensacola and is provided for information purposes only and is not to be used for development of construction plans or any type of engineering services based on information depicted herein. It is maintained for the function of this office only. It is not intended for conveyance nor is it a survey. The data is not guaranteed accurate or suitable for any use other than that for which it was gathered.

L:\GIS\Map_Archives\Planning\Annexation\MarkEaton\MarkEatonAnnexation.mxd



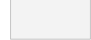
 Mark Eaton Annexation Request


Zoning

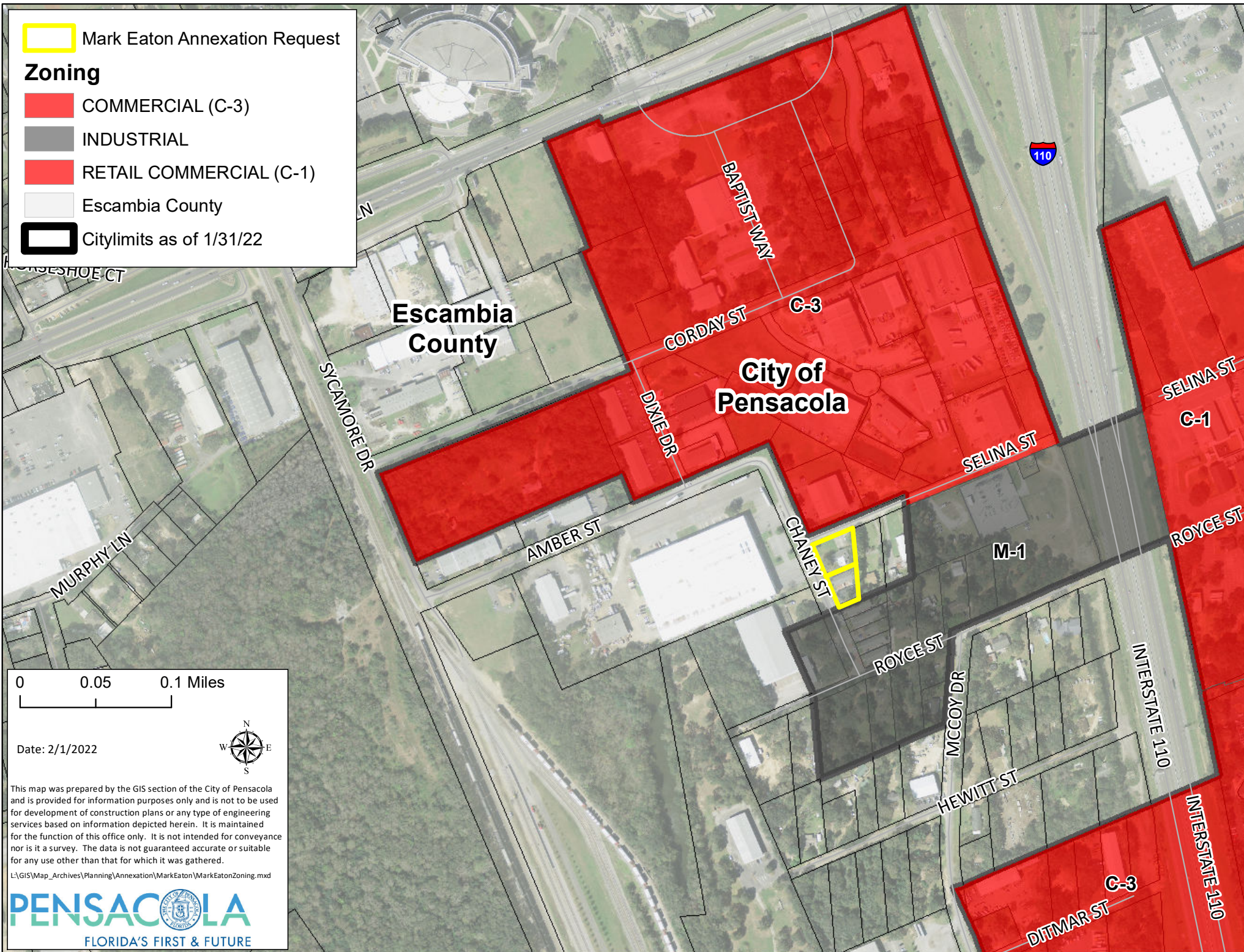
 COMMERCIAL (C-3)

 INDUSTRIAL

 RETAIL COMMERCIAL (C-1)

 Escambia County

 Citylimits as of 1/31/22



0 0.05 0.1 Miles

Date: 2/1/2022



This map was prepared by the GIS section of the City of Pensacola and is provided for information purposes only and is not to be used for development of construction plans or any type of engineering services based on information depicted herein. It is maintained for the function of this office only. It is not intended for conveyance nor is it a survey. The data is not guaranteed accurate or suitable for any use other than that for which it was gathered.

L:\GIS\Map_Archives\Planning\Annexation\MarkEaton\MarkEatonZoning.mxd


 Mark Eaton Annexation Request

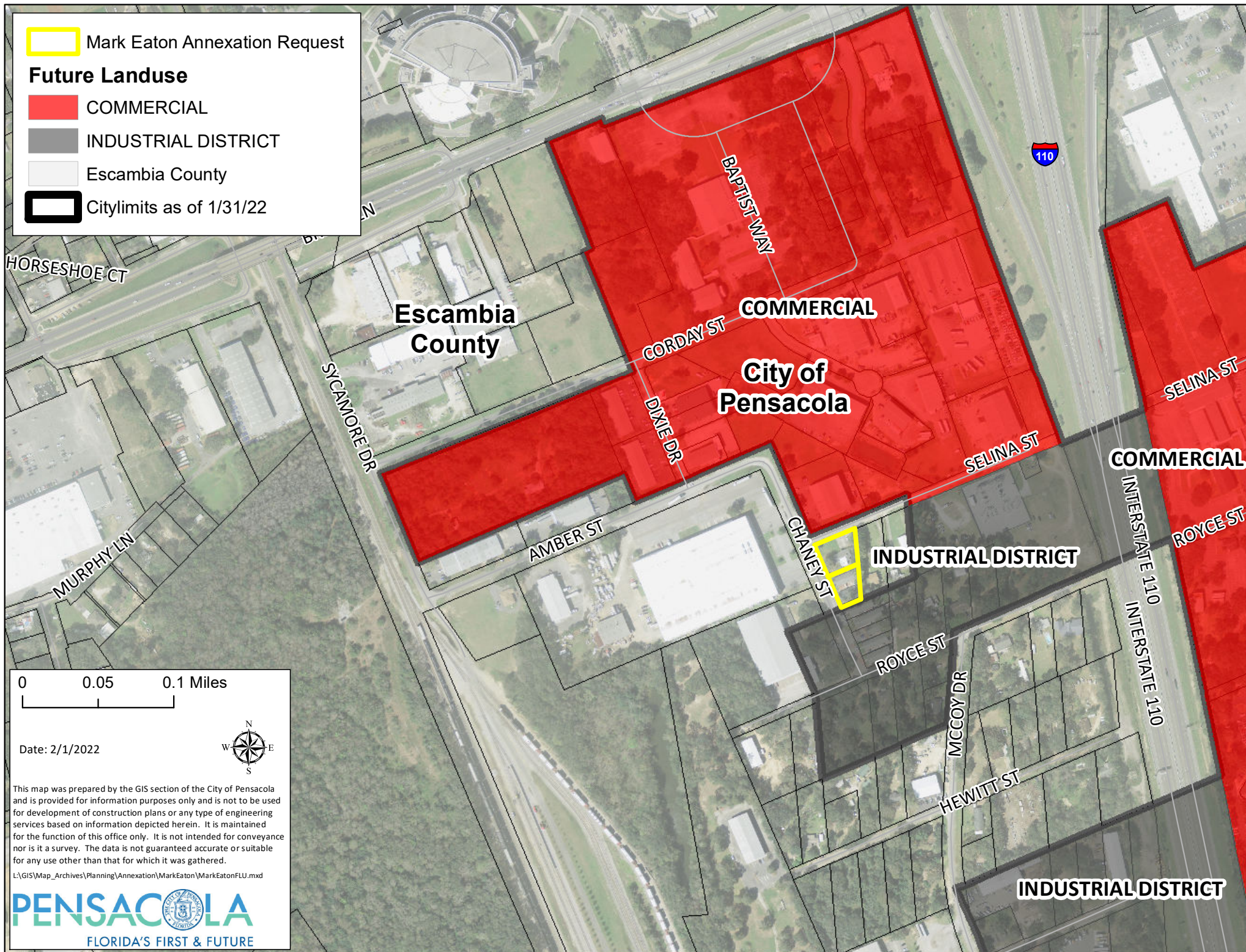
Future Landuse

 COMMERCIAL

 INDUSTRIAL DISTRICT

 Escambia County

 Citylimits as of 1/31/22



0 0.05 0.1 Miles

Date: 2/1/2022



This map was prepared by the GIS section of the City of Pensacola and is provided for information purposes only and is not to be used for development of construction plans or any type of engineering services based on information depicted herein. It is maintained for the function of this office only. It is not intended for conveyance nor is it a survey. The data is not guaranteed accurate or suitable for any use other than that for which it was gathered.

L:\GIS\Map_Archives\Planning\Annexation\MarkEaton\MarkEatonFLU.mxd

