
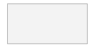

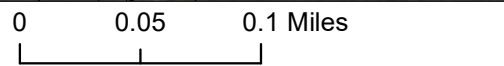
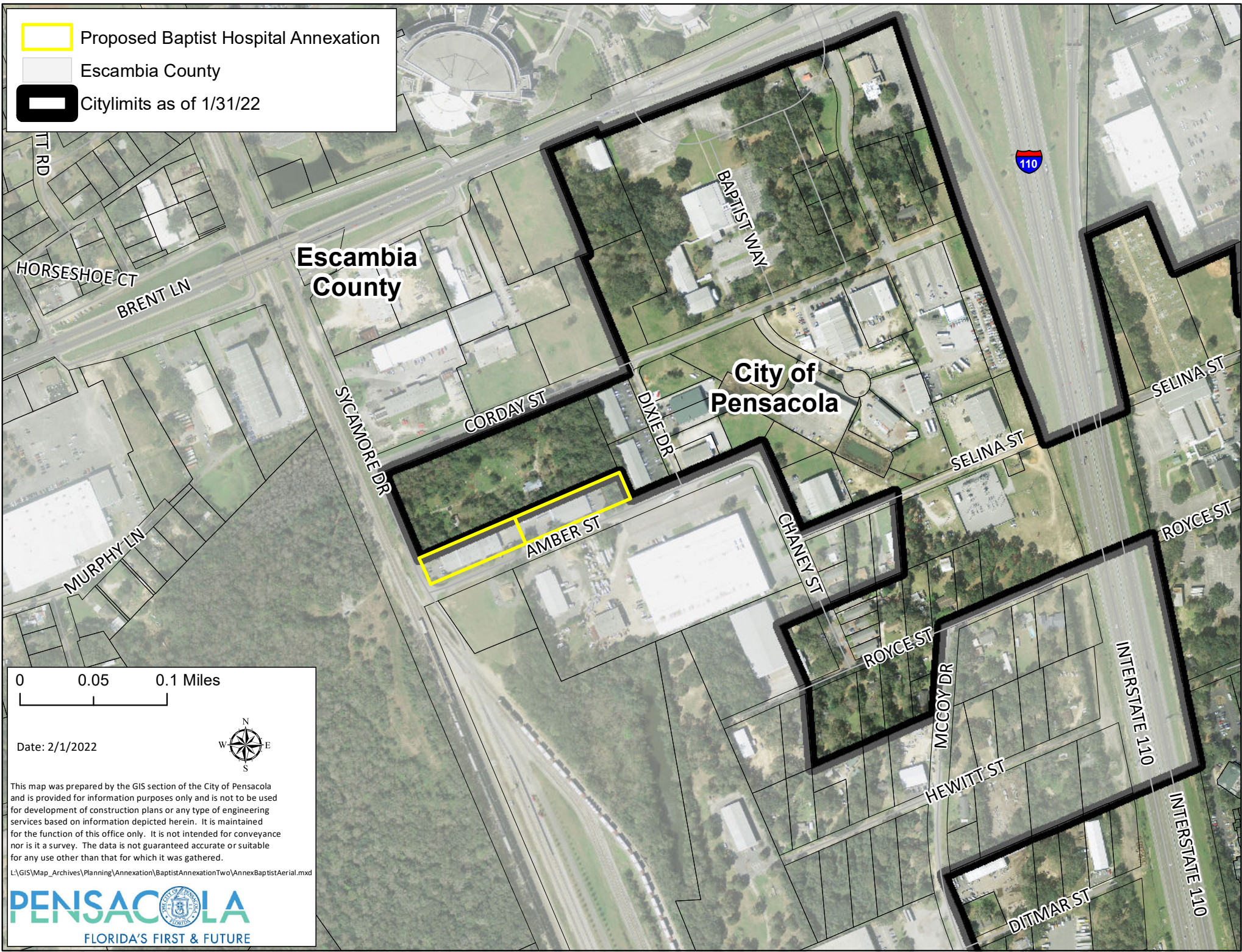


-  Proposed Baptist Hospital Annexation
-  Escambia County
-  Citylimits as of 1/31/22




Date: 2/1/2022


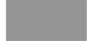
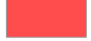
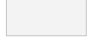



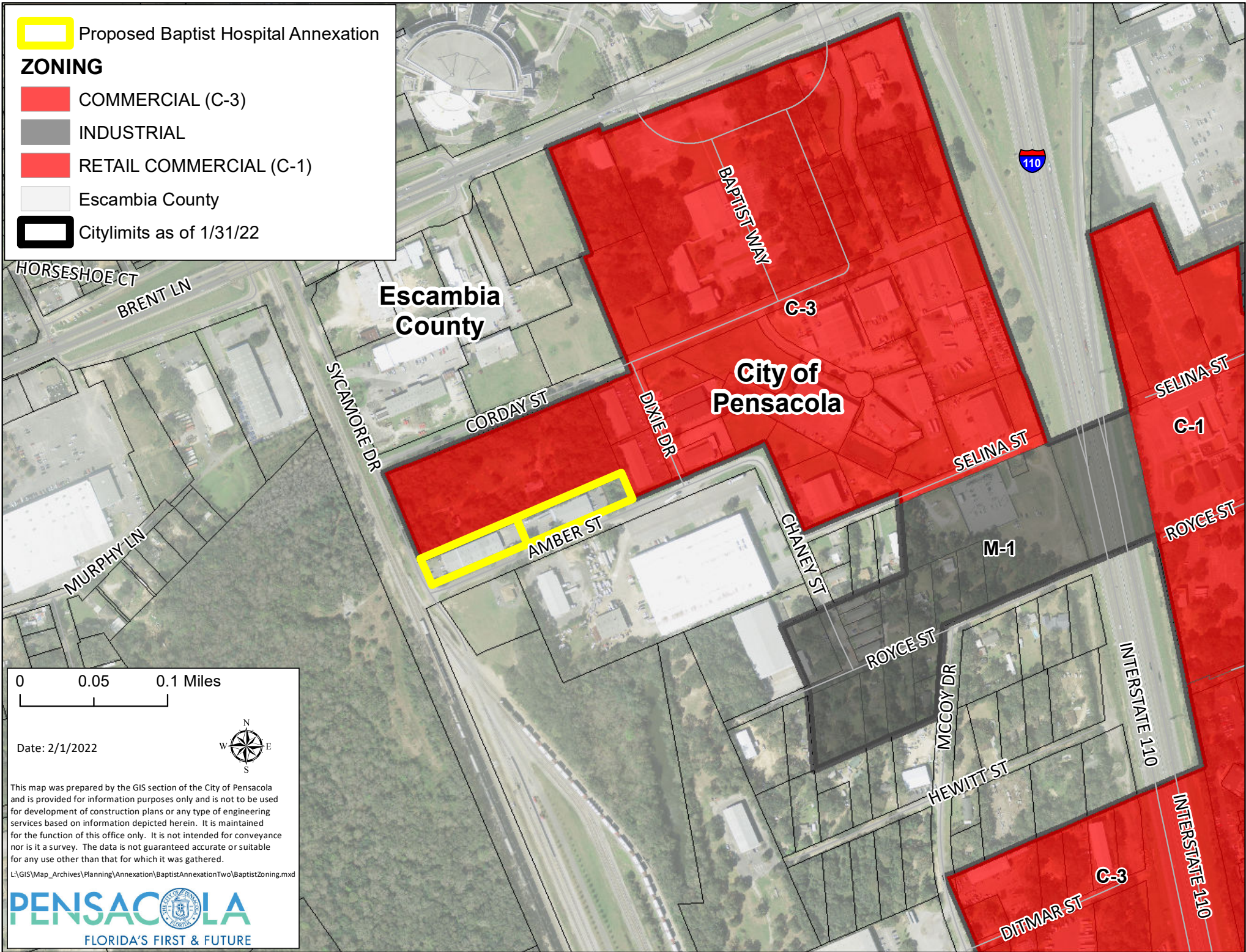
This map was prepared by the GIS section of the City of Pensacola and is provided for information purposes only and is not to be used for development of construction plans or any type of engineering services based on information depicted herein. It is maintained for the function of this office only. It is not intended for conveyance nor is it a survey. The data is not guaranteed accurate or suitable for any use other than that for which it was gathered.

L:\GIS\Map_Archives\Planning\Annexation\BaptistAnnexationTwo\AnnexBaptistAerial.mxd

 Proposed Baptist Hospital Annexation

ZONING

-  COMMERCIAL (C-3)
-  INDUSTRIAL
-  RETAIL COMMERCIAL (C-1)
-  Escambia County
-  Citylimits as of 1/31/22



0 0.05 0.1 Miles

Date: 2/1/2022




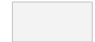
This map was prepared by the GIS section of the City of Pensacola and is provided for information purposes only and is not to be used for development of construction plans or any type of engineering services based on information depicted herein. It is maintained for the function of this office only. It is not intended for conveyance nor is it a survey. The data is not guaranteed accurate or suitable for any use other than that for which it was gathered.

L:\GIS\Map_Archives\Planning\Annexation\BaptistAnnexationTwo\BaptistZoning.mxd



 Proposed Baptist Hospital Annexation

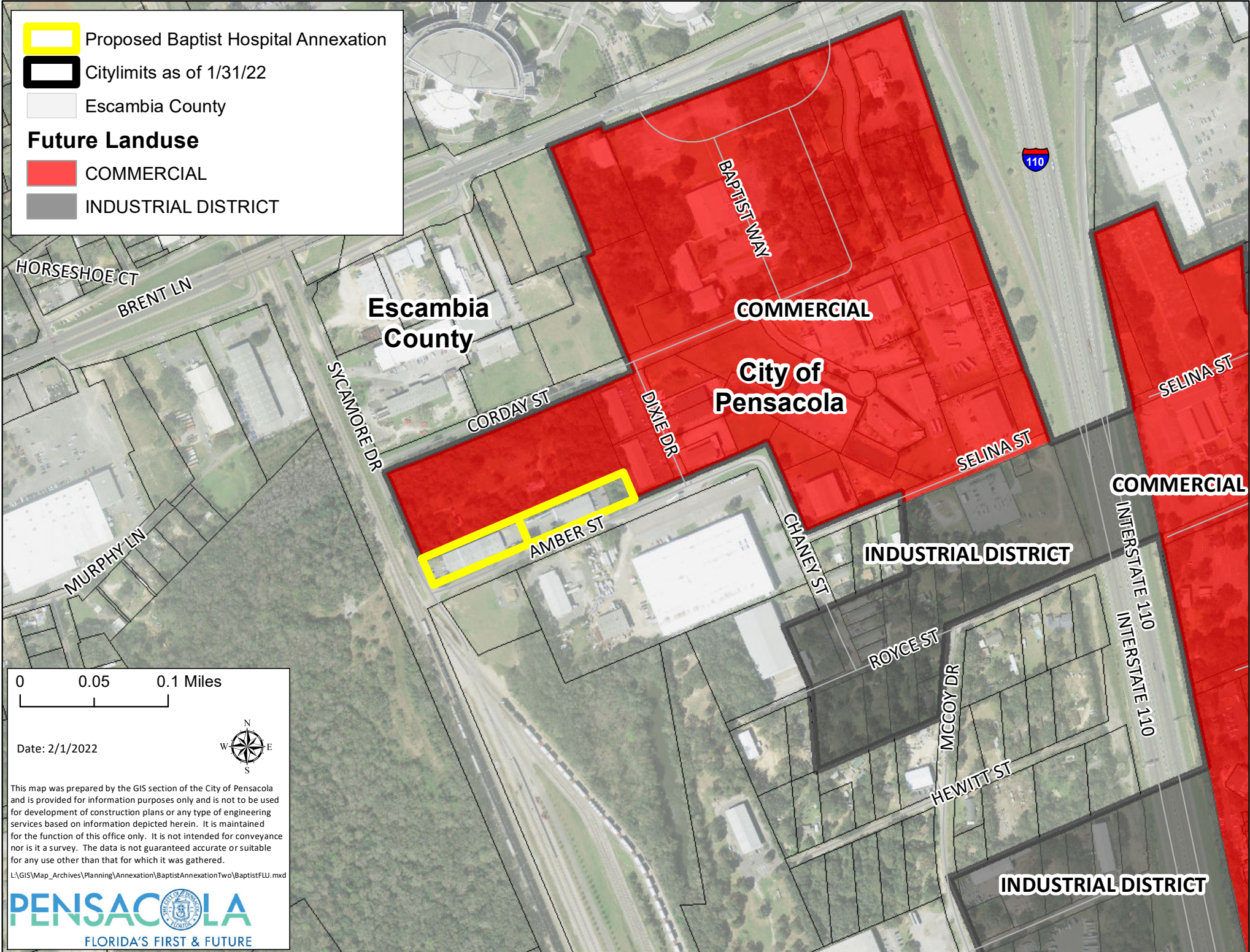
 Citylimits as of 1/31/22

 Escambia County

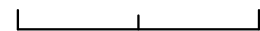
Future Landuse

 COMMERCIAL

 INDUSTRIAL DISTRICT



0 0.05 0.1 Miles



Date: 2/1/2022



This map was prepared by the GIS section of the City of Pensacola and is provided for information purposes only and is not to be used for development of construction plans or any type of engineering services based on information depicted herein. It is maintained for the function of this office only. It is not intended for conveyance nor is it a survey. The data is not guaranteed accurate or suitable for any use other than that for which it was gathered.

L:\GIS\Map_Archives\Planning\Annexation\BaptistAnnexationTwo\BaptistFLU.mxd