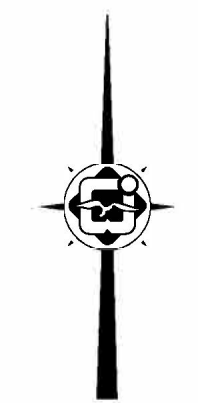
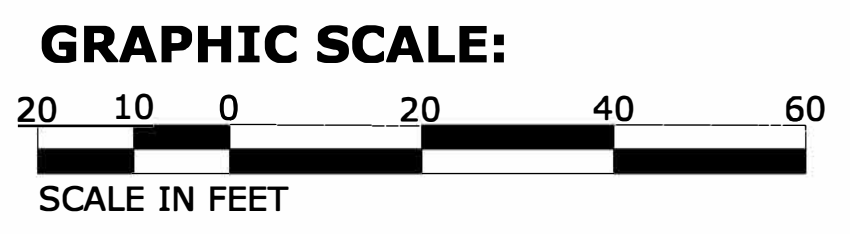
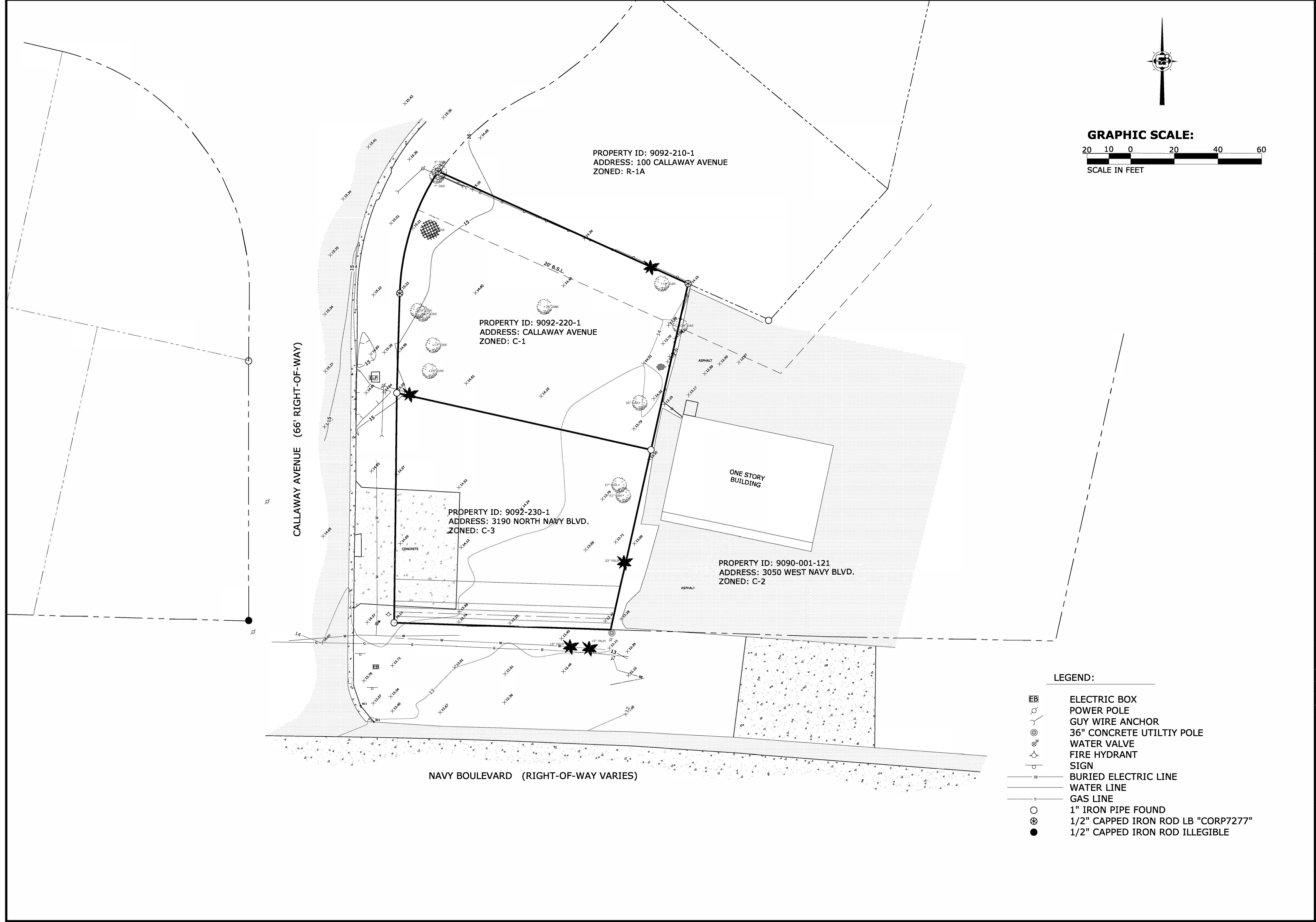


H:\2015\150088 - Centennial Imports Parking Lot Expansion\Civil\20160318 - Complete Civil Drawings.dwg, 01/17/15 12:56:13 PM, Bluebeam PDF



- LEGEND:**
- ELECTRIC BOX**
  - POWER POLE**
  - GUY WIRE ANCHOR**
  - 36" CONCRETE UTILTIY POLE**
  - WATER VALVE**
  - FIRE HYDRANT**
  - SIGN**
  - BURIED ELECTRIC LINE**
  - WATER LINE**
  - GAS LINE**
  - 1" IRON PIPE FOUND**
  - 1/2" CAPPED IRON ROD LB "CORP7277"**
  - 1/2" CAPPED IRON ROD ILLEGIBLE**

EXISTING CONDITIONS  
&  
TOPOGRAPHY

CENTENNIAL IMPORTS  
PARKING LOT EXPANSION  
FOR  
CENTENNIAL IMPORTS OF PENSACOLA

ESCAMBIA COUNTY  
FLORIDA

NOT Released for Construction  
By: \_\_\_\_\_  
Date: \_\_\_\_\_

As-Built "Record Drawing"  
By: \_\_\_\_\_  
Date: \_\_\_\_\_

Revisions:


Frank J. Fabre, P.E.

P.E. #15867

Designed By:  
MER

Drawn By:  
JMC

Checked By:  
MER

Date:  
10-20-2015

Job Number:  
150088

File Name:  
SEE LEFT

Sheet:  
**G-201**

FABRE ENGINEERING, INC.  
DBA  
**FABRE ENGINEERING & SURVEYING**  
ENGINEERS ♦ PLANNERS ♦ SURVEYORS

119 GREGORY SQUARE PENSACOLA, FLORIDA 32502  
TELEPHONE: 850-433-6438 FAX: 850-434-7842

L.B. NO. 000679  
E.B. NO. 0007215