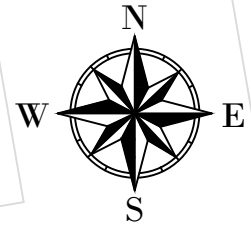
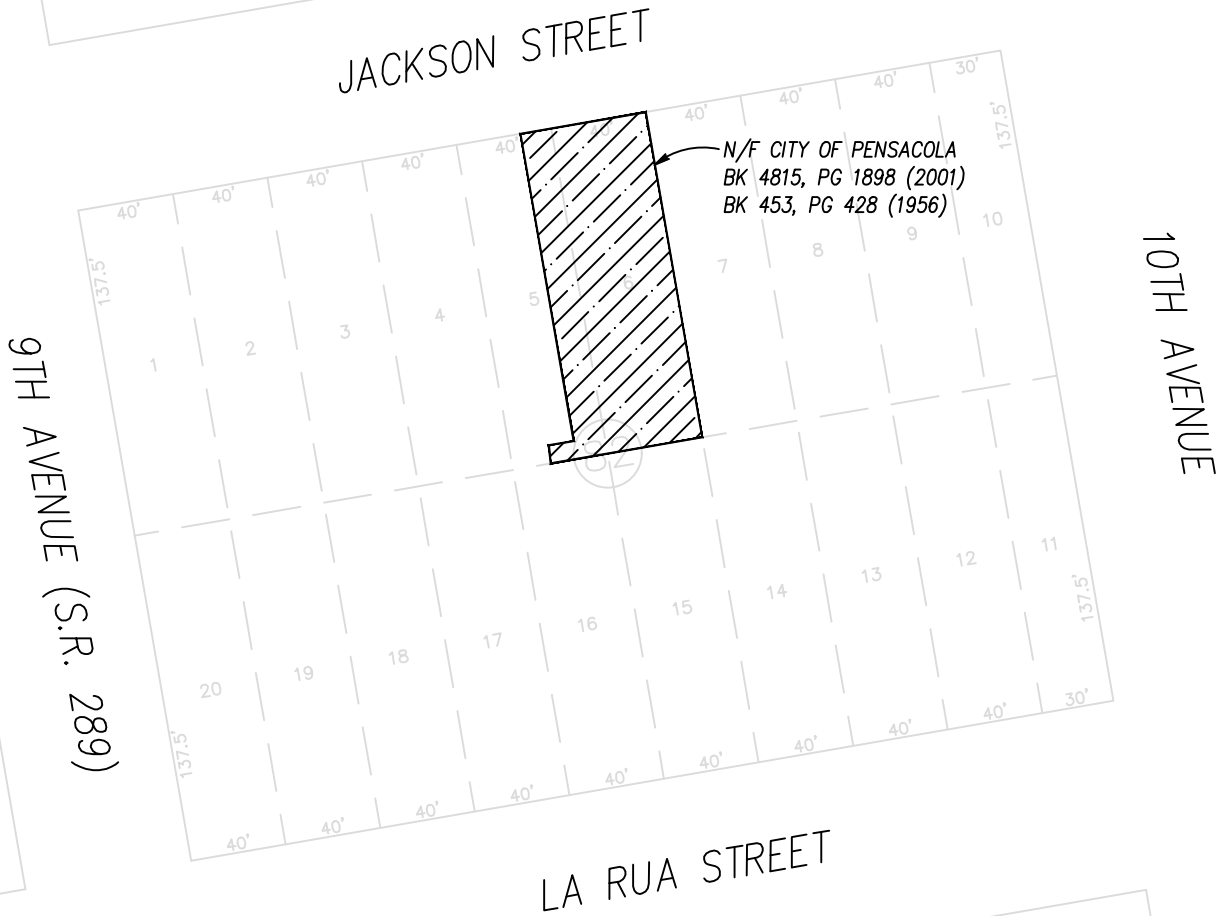


# EXHIBIT A-1



SCALE 1" = 80'



N/F CITY OF PENSACOLA  
BK 4815, PG 1898 (2001)  
BK 453, PG 428 (1956)

### Description

LOT 6 AND THE EAST 13 FEET OF LOT 5 AND THE SOUTH 7.57 FEET OF THE WEST 27 FEET OF LOT 5, BLOCK 82, NEW CITY TRACT, ACCORDING TO THE MAP OF THE CITY OF PENSACOLA, COPYRIGHTED BY THOMAS C. WATSON IN 1906, LESS AND EXCEPT THE PARCEL OF LAND DESCRIBED IN OFFICIAL RECORD BOOK 7187 AT PAGE 368, CLERK OF THE COURT, ESCAMBIA COUNTY, FLORIDA.