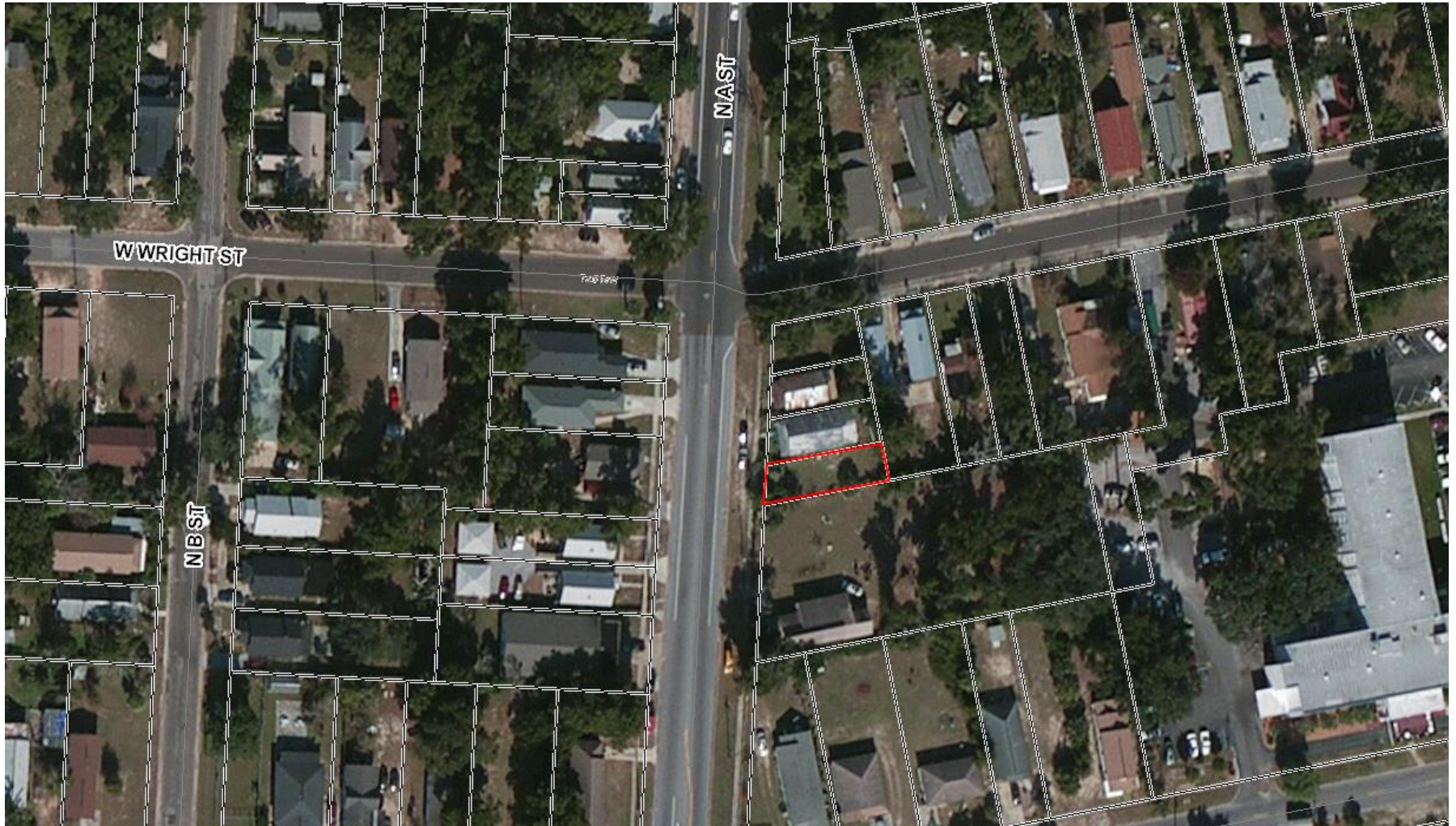


216 North "A" Street



Source: Escambia County Property Appraiser

← Navigate Mode  Account  Reference →

[Restore Full Page Version](#)

<b>General Information</b>		<b>Assessments</b>				
<b>Reference:</b>	000S009010163083	<b>Year</b>	<b>Land</b>	<b>Imprv</b>	<b>Total</b>	<b>Cap Val</b>
<b>Account:</b>	131804000	2017	\$9,149	\$0	\$9,149	\$7,495
<b>Owners:</b>	COMMUNITY REDEVELOPMENT AGENCY OF THE PENSACOLA CITY OF	2016	\$7,189	\$0	\$7,189	\$6,814
<b>Mail:</b>	PO BOX 12910 PENSACOLA, FL 32521	2015	\$6,195	\$0	\$6,195	\$6,195
<b>Situs:</b>	216 N A ST 32502	<a href="#">Disclaimer</a>				
<b>Use Code:</b>	VACANT RESIDENTIAL	<a href="#">Amendment 1/Portability Calculations</a>				
<b>Taxing Authority:</b>	PENSACOLA CITY LIMITS	★ <a href="#">File for New Homestead Exemption Online</a>				
<b>Schools (Elem/Int/High):</b>	GLOBAL LEARNING ACADEMY/WORKMAN/PENSACOLA					
<b>Tax Inquiry:</b>	<a href="#">Open Tax Inquiry Window</a>					
Tax Inquiry link courtesy of Scott Lunsford Escambia County Tax Collector						

<b>Sales Data</b>						<b>2017 Certified Roll Exemptions</b>	
<b>Sale Date</b>	<b>Book</b>	<b>Page</b>	<b>Value</b>	<b>Type</b>	<b>Official Records (New Window)</b>	MUNICIPAL OWNED	
02/13/2008	6288	1439	\$100	WD	<a href="#">View Instr</a>	<b>Legal Description</b>	
07/2003	5191	706	\$100	TD	<a href="#">View Instr</a>	S 27 7/10 FT OF S 90 FT OF LTS 16 17 AND OF W 8 FT 4 IN OF LT 15 MAXENT TRACT BEL NO BLK 83 BELMONT TRACT OR 6288...	
Official Records Inquiry courtesy of Pam Childers Escambia County Clerk of the Circuit Court and Comptroller						<b>Extra Features</b>	
						None	



<b>Buildings</b>
Images
None

The primary use of the assessment data is for the preparation of the current year tax roll. No responsibility or liability is assumed for inaccuracies or errors.