

# **FY 2019 - FY 2023 Florida-Alabama TPO Project Priorities**

**Prepared for**

**Florida-Alabama Transportation Planning Organization;  
Florida Department of Transportation, District Three; and  
Alabama Department of Transportation**

**Prepared by**

**West Florida Regional Planning Council  
Staff to the Florida-Alabama Transportation Planning Organization**



**Draft: April 14, 2017**

**Amended:**



This report was financed in part by the U.S. Department of Transportation, the Federal Highway Administration, the Federal Transit Administration, the Florida Department of Transportation, the Alabama Department of Transportation, and local participating governments, in partial fulfillment of UPWP Work Task C.1. This document does not necessarily reflect the official reviews or policies of the U.S. Department of Transportation.

## Table of Contents

<u>Section</u>	<u>Page Numbers</u>
Table 1: FY 19 - 23 Committed Non-Strategic Intermodal System (Non-SIS) Capacity Project Priorities – Florida.....	1
Table 2: FY 19 - 23 Non-Strategic Intermodal System (Non-SIS) Project Priorities – Florida .....	2
Table 3: FY 19 - 23 Committed Strategic Intermodal System (SIS) Project Priorities – Florida .....	8
Table 4: FY 19 - 23 Strategic Intermodal System (SIS) Project Priorities – Florida .....	10
Table 5: FY 19 - 23 Capacity Project Priorities – Alabama .....	13
Table 6: FY 19 - 23 Committed Transportation Systems Management (TSM) Project Priorities .....	14
Table 7: FY 19 - 23 Transportation Systems Management (TSM) Project Priorities.....	15
Table 8: FY 19 - 23 Committed Transportation Alternatives Program (TAP) Project Priorities – Florida .....	16
Table 9: FY 19 - 23 Transportation Alternatives Program (TAP) Project Priorities – Florida .....	17
Table 10: FY 19 - 23 Committed Transportation Alternatives Program (TAP) Project Priorities – Alabama.....	19
Table 11: FY 19 - 23 Transportation Alternatives Program (TAP) Project Priorities – Alabama .....	20
Table 12: FY 19 - 23 Committed Bicycle & Pedestrian Projects – Florida.....	21
Table 13: FY 19 - 23 Bicycle & Pedestrian Project Priorities – Florida .....	22
Table 14: FY 19 - 23 Committed Bicycle & Pedestrian Project Priorities – Alabama.....	26
Table 15: FY 19 - 23 Bicycle & Pedestrian Project Priorities – Alabama .....	27
Table 16: FY 19 - 23 Escambia County Public Transportation Priorities Listed by Grant.....	28
Table 17: FY 19 - 23 Santa Rosa County Public Transportation Priorities Listed by Grant .....	30
Table 18: FY 19 - 23 Pensacola International Airport Aviation Project Priorities .....	31
Table 19: FY 19 - 23 Peter Prince Airport Aviation Project Priorities.....	36
Table 20: FY 19 - 23 Port of Pensacola Seaport Project Priorities .....	38
Table 21: FY 19 - 23 Bridge Replacement Project Priorities .....	40
Table 22: FY 19 - 23 Congestion Mitigation and Air Quality (CMAQ) Project Priorities .....	41
Appendix A - Regional Intelligent Transportation System (ITS) Master Plan Projects	

**Table 1: FY 19 - 23 Committed Non-Strategic Intermodal System (Non-SIS) Capacity Project Priorities – Florida  
Not Subject to Priority Ranking**

Construction funded in the first three years of the Transportation Improvement Program or Underway

FDOT Item-Segment	Project Name	From	To	Project Phase Status	Improvement
2186053	Nine Mile Road (ESC)	Pine Forest Road	US 29	PD&E Study – Complete	Widen to 4 Lanes
				Design – Complete	
				ROW – Complete	
				Construction – Underway	
2186057	Nine Mile Road (ESC)	I-10	Pine Forest Road	PD&E Study – Complete	Widen to 4 Lanes
				Design – Underway	
				ROW – Complete	
				Construction – Underway	
2186056	Nine Mile Road (ESC)	Beulah Road	I-10	PD&E – Complete	Widen to 4 Lanes
				Design – Underway	
				ROW – Complete	
				Construction – Underway	
4378441	17th Avenue (ESC)	At Bayfront Parkway		PD&E – Underway	Interchange
				Design – Underway	
				ROW – No Significant Cost	
				Construction – Funded FY 18/19	

**Table 2: FY 19 - 23 Non-Strategic Intermodal System (Non-SIS) Project Priorities – Florida**

FDOT Item-Segment	Project Name	From	To	Improvement	Phases in <b>Green</b> are Cost Feasible with State/Federal Funds in the 2040 LRTP - <b>Red</b> phases are NOT Cost Feasible with State/Federal Funds	FY 19-23 Priority Ranking
NA	Regional ITS Plan Projects <sup>1</sup>	\$25,000,000 from funding sources outside the FDOT Work Program with no impacts to the TPO's Project Priorities				1A
4280581	Regional ITS Plan Projects	\$1,400,000 for Operations and Maintenance/Capital Improvements for ITS				1B
4371151	FY 2019 East Bay Boulevard (CR 399) (SRC)	US 98	SR 87	Mobility Management Program \$150,000	2	
4371151	FY 2020 Glover Lane (SRC)	US 90	Berryhill Road			
4371151	FY 2021 West Spencer Field Road (SRC)	US 90	Berryhill Road			
4371151	FY 2022 Chumuckla Highway/ US 90 (SRC)	Intersection Improvements				
N/A	FY 2023 (ESC)	TBD	TBD			
4318833	FY 2019 US 98 (SRC)				Mobility Management Projects \$1,500,000	3
4318834 & 4318835	FY 2020 US 90 & US 98 (SRC)					
4318836	FY 2021 US 90 & US 98 (SRC)					
4318837	FY 2022 Fairfield Drive (ESC)	US 90 (Mobile Highway)	Lillian Highway			
4409041	FY 2023 Main Street (ESC)	Barrancas Avenue	Clubbs Street			
4217331	Public Transportation Capital Improvements Flex Funds				\$300,000	4

<sup>1</sup>Regional ITS Plan projects are listed in Appendix A.

**Table 2: FY 19 - 23 Non-Strategic Intermodal System (Non-SIS) Project Priorities – Florida**

FDOT Item-Segment	Project Name	From	To	Improvement	Phases in <b>Green</b> are Cost Feasible with State/Federal Funds in the 2040 LRTP - <b>Red</b> phases are NOT Cost Feasible with State/Federal Funds	FY 19-23 Priority Ranking
N/A	(ESC) FY 18/19			Bicycle/Pedestrian Projects \$350,000		5
N/A	(ESC) FY 19/20					
N/A	(SRC) FY 20/21					
N/A	(SRC) FY 21/22					
N/A	(SRC) FY 22/23					
4409041	W. Main Street	Barrancas Avenue	Clubbs Street	Complete Streets Program \$250,000		6A
N/A	US 90	Willing Street	Stewart Street			6B
4389082	SR 292 Perdido Key Drive (ESC)	Alabama Line	Park Entrance	Regional Trail Program \$250,000		7A
N/A	University of West Florida's Scenic Bluff's Corridor Connection on University of West Florida Campus and along Ten Mile Road/Greenbrier Road					7B
NA	Safety Education Program				\$60,000	8
NA	Compress Natural Gas (CNG) Program				\$60,000	9
2186055	Nine Mile Road (ESC)	Mobile Highway	Beulah Road	Widen to 4 lanes	PD&E – Complete	10
					Design – Funded FY 17/18	
					ROW – Funded FY 19/20 and FY 20/21 Construction <sup>1</sup>	
2184291	Burgess Road (ESC)	US 29	Hilburn Road	Widen to 4 lanes	PD&E – Complete	11
					Design – Complete	
					ROW – Funded FY 17/18 with Local and State funds and FY 20/21 with State funds Construction <sup>1</sup>	
2204401	US 98 (SRC)	Bayshore Drive	Portside Drive	Widen to 6 lanes	PD&E – Complete	12
					Design – Complete	
					ROW – Underway Construction <sup>1</sup>	

<sup>1</sup>Phase NOT currently funded in the Transportation Improvement Program (TIP) or FDOT Five Year Work Program.

**Table 2: FY 19 - 23 Non-Strategic Intermodal System (Non-SIS) Project Priorities – Florida**

FDOT Item-Segment	Project Name	From	To	Improvement	Phases in <b>Green</b> are Cost Feasible with State/Federal Funds in the 2040 LRTP - <b>Red</b> phases are NOT Cost Feasible with State/Federal Funds	FY 19-23 Priority Ranking
NA	US 29 Connector (ESC) <sup>2</sup>  <i>FDOT is currently administering a PD&amp;E Study for a new interchange at 1-10 @ Beulah Road. As this study progresses, it is the Department's intent to consider adding the Beulah Road interchange to the Strategic Intermodal System (SIS) by evaluating information obtained from the study to determine if the facility will function as a SIS corridor. If the information supports the need to add Beulah Road to the SIS, phases of the project beyond the PD&amp;E phase would be eligible for SIS funds</i>	Beulah Road Interchange	US 29	New 4 lane facility	PD&E – Underway	13
					Design – Cost Feasible with Local funds <sup>1</sup>	
					ROW – Cost Feasible with Local funds <sup>1</sup>	
4409151	US 90 (SRC)	Glover Lane / Old Highway 90	SR 87N Stewart Street	Widen to 4 lanes	PD&E – Underway Design – Funded FY17/18 ROW <sup>1</sup> Construction	14
4409153	US 90 (SRC)	CR 89 / Ward Basin Road	SR 87S	Widen to 4 lanes	PD&E – Underway Design – Funded FY18/19 and FY 19/20 ROW <sup>1</sup> Construction	15
2204363	US 90 (SRC)	Escambia County Line	Glover Lane / Old Highway 90	Widen to 6 lanes	PD&E – Underway Design <sup>1</sup> ROW Construction	16
4210121	Blue Angel Parkway (ESC)	Sorrento Road	US 98	Widen to 4 lanes	PD&E – Complete Design – Underway ROW Funded in FY 20/21 with local funds Construction – Cost Feasible with Local funds <sup>1</sup> .	17
2184932	Gulf Beach Highway (ESC)	Fairfield Drive	Navy Boulevard	Widen to 4 lanes	PD&E – Funded FY17/18 and FY18/19 Design <sup>1</sup> ROW <sup>1</sup> Construction <sup>1</sup>	18

<sup>1</sup>Phase NOT currently funded in the Transportation Improvement Program (TIP) or FDOT Five Year Work Program.

<sup>2</sup>The PD&E Study for the Beulah Road Interchange is funded under project #4331131 with state and federal SIS funds

**Table 2: FY 19 - 23 Non-Strategic Intermodal System (Non-SIS) Project Priorities – Florida**

FDOT Item-Segment	Project Name	From	To	Improvement	Phases in Green are Cost Feasible with State/Federal Funds in the 2040 LRTP - Red phases are NOT Cost Feasible with State/Federal Funds	FY 19-23 Priority Ranking
2184933	Sorrento Road/Gulf Beach Highway (ESC)	Blue Angel Parkway	Fairfield Drive	Widen to 4 lanes	PD&E – Funded FY17/18 and FY18/19 Design <sup>1</sup> ROW <sup>1</sup> Construction	19
NA	Bayfront Parkway (PNS)	Tarragona Street	Chase Street	2 Lane Improvement	PD&E <sup>1</sup> Design <sup>1</sup> ROW – Not Required Construction <sup>1</sup>	20
NA	Main Street (PNS)	Barrancas Avenue	Clubbs Street	2 Lane Improvement	PD&E <sup>1</sup> Design <sup>1</sup> ROW – Not Required Construction <sup>1</sup>	21
NA	Express Bus Service (ESC/SRC)	Milton	Beulah	New Bus Route Capital Purchase	n/a	22
2186202	Langley Avenue/Tippin Avenue/9th Avenue (ESC)	Major Intersection Improvement			PD&E – Complete Design is at 30% and on hold pending future funding ROW Construction	23
4210141 4210143	Pinestead-Longleaf Connector (ESC) <sup>2</sup>	Pine Forest Road	US 29	Widen to 4 lanes	PD&E – Complete Design – Underway ROW Construction	24

<sup>1</sup>Phase NOT currently funded in the Transportation Improvement Program (TIP) or FDOT Five Year Work Program.

<sup>2</sup>Escambia County will be requesting FDOT to change the project limits from Pine Forest Road to Kemp and Kemp to US 29 and funding on this project since TRIP money has been involved in this Project.

**Table 2: FY 19 - 23 Non-Strategic Intermodal System (Non-SIS) Project Priorities – Florida**

FDOT Item-Segment	Project Name	From	To	Improvement	Phases in <b>Green</b> are Cost Feasible with State/Federal Funds in the 2040 LRTP - <b>Red</b> phases are NOT Cost Feasible with State/Federal Funds	FY 19-23 Priority Ranking
NA	Pine Forest Road (ESC)	I-10	Nine Mile Road	Widen to 4 lanes	PD&E <sup>1</sup> Design <sup>1</sup> ROW <sup>1</sup> Construction <sup>1</sup>	25
4210111	SR 292 Perdido Key Drive (ESC)	Alabama State Line	Gulf Beach Highway/ Innerarity Point Road	Provide multimodal Improvement	PD&E – Complete PD&E <sup>1</sup> ROW Construction	26
2204362	US 90 (ESC)	Scenic Highway	Santa Rosa County Line	Widen to 6 lanes	PD&E – Underway Design <sup>1</sup> ROW Construction	27
2204265	US 98 (SR 30) (SRC)	East of Ramble Bay Lane	Okaloosa County Line	Widen to 6 lanes	PD&E – Underway Design – Funded FY20/21 and FY 21/22 ROW Construction	28
4210112	Sorrento Road (ESC)	Gulf Beach Highway/ Innerarity Point Road	Blue Angel Parkway	Widen to 4 Lanes	PD&E – Complete Design <sup>1</sup> ROW Construction	29
NA	US98 (SR30) (SRC)	At SR 399		Major Intersection Improvement	PD&E <sup>1</sup> Design <sup>1</sup> ROW Construction	30
2204262	US98 (SR30) (SRC)	Portside Drive	East of Ramble Bay Lane	Widen to 6 Lanes	PD&E – Underway Design <sup>1</sup> ROW Construction	31

<sup>1</sup>Phase NOT currently funded in the Transportation Improvement Program (TIP) or FDOT Five Year Work Program.



**Table 2: FY 19 - 23 Non-Strategic Intermodal System (Non-SIS) Project Priorities – Florida**

FDOT Item-Segment	Project Name	From	To	Improvement	Phases in Green are Cost Feasible with State/Federal Funds in the 2040 LRTP - Red phases are NOT Cost Feasible with State/Federal Funds	FY 19-23 Priority Ranking
NA	Express Bus - Northwest (ESC/SRC)	Pensacola	Beulah	New Bus Route Capital Purchase	n/a	32
NA	Mobile Highway (ESC)	Nine Mile Road (US 90A)	Godwin Lane	Widen to 4 Lanes	PD&E <sup>1</sup> Design <sup>1</sup> ROW Construction	33
4369021	Navarre Community Access Road (SRC)	Edgewood Drive	Whispering Pines Road	Construct 2 lane Connectivity	PD&E <sup>1</sup> Design <sup>1</sup> ROW Construction	34
NA	Fairfield Drive (ESC)	Mobile Highway	Lillian Highway	Widen to 4 Lanes	PD&E <sup>1</sup> Design <sup>1</sup> ROW Construction	35
NA	Berryhill Road (SRC)	Woodbine Road	West Spencer Field Road	Widen to 3 Lanes	PD&E <sup>1</sup> Design <sup>1</sup> ROW Construction	36
NA	Woodbine Road (SRC)	US 90	Berryhill Road	Widen to 4 Lanes	PD&E <sup>1</sup> Design <sup>1</sup> ROW Construction	37
NA	East Bay Boulevard (SRC)	SR 87	Edgewood Drive	Enhanced 2 lane facility	PD&E <sup>1</sup> Design <sup>1</sup> ROW Construction	38

<sup>1</sup>Phase NOT currently funded in the Transportation Improvement Program (TIP) or FDOT Five Year Work Program.

**Table 3: FY 19 - 23 Committed Strategic Intermodal System (SIS) Project Priorities – Florida  
Not Subject to Priority Ranking**

Construction funded in the first three years of the Transportation Improvement Program or Underway

FDOT Item-Segment	Project Name	From	To	Project Phase Status	Improvement
2224771	I-10 (ESC)	Davis Highway	Scenic Highway	PD&E Study – Complete	Widen to 6 Lanes
				Design – Complete	
				ROW – Complete	
				Construction – Underway	
2204424	SR 87 (SRC)	Eglin AFB Boundary	2 miles south of the Yellow River	PD&E Study – Complete	Widen to 4 Lanes
				Design – Complete	
				ROW – Complete	
				Construction – Underway	
4130623	I-10 (ESC)	Escambia Bay Bridge	Avalon Boulevard	PD&E – Complete	Widen to 6 Lanes
				Design – Complete	
				ROW – Not Required	
				Construction – Underway	
2186031	US 29 (ESC)	I-10	9 1/2 Mile Road	PD&E – Complete	Widen to 6 Lanes
				Design – Complete	
				ROW – Complete	
				Construction – Funded FY 15/16	
2204427	SR 87 (SRC)	2 miles south of the Yellow River	CR 184	PD&E – Complete	Widen to 4 Lanes
				Design – Complete	
				ROW – Complete	
				Construction – Underway	

**Table 3: FY 19 - 23 Committed Strategic Intermodal System (SIS) Project Priorities – Florida  
Not Subject to Priority Ranking**

Construction funded in the first three years of the Transportation Improvement Program or Underway

FDOT Item-Segment	Project Name	From	To	Project Phase Status	Improvement
2224762	I-10 (ESC)		at US 29 (SR 95) Phase I	PD&E – Complete	Modify Interchange
				Design – Complete	
				ROW not Required	
				Construction – Underway	

DRAFT

**Table 4: FY 19 - 23 Strategic Intermodal System (SIS) Project Priorities – Florida**

FDOT Item-Segment	Project Name	From	To	Phases in <b>Green</b> are Cost Feasible with State/Federal Funds in the 2040 LRTP - <b>Red</b> phases are NOT Cost Feasible with State/Federal Funds	Improvement	FY 19-23 Priority Ranking
2224761	I-10 (ESC)	at US 29 (SR 95)		PD&E – Complete Design – Underway ROW – Funded FY 20/21 and FY 21/22 Construction <sup>1</sup>	Interchange	1
4331131	Beulah Road Interchange (ESC)	at I-10 (SR 8)		PD&E– Underway Design <sup>1</sup> ROW Construction	New Interchange (I-10 at Beulah Road)	2
NA	I-10 (ESC)	at Nine Mile Road		PD&E Design ROW Construction	Safety/Operation Improvement West Bound Nine Mile Road	3A
4379051 <sup>2</sup>	I-10 (ESC)	Alabama Line	West of US 29 (SR 95)	PD&E – Funded FY 17/18 Design <sup>1</sup> ROW <sup>1</sup> Construction <sup>1</sup>	Widen to 6 Lanes	3B
NA	US 29 Connector (ESC)	Beulah Road Interchange	US 29	PD&E – Underway Design <sup>1</sup> ROW Construction	New 4 lane facility	4
	<i>FDOT is currently administering a PD&amp;E Study for a new interchange at I-10 @ Beulah Road. As this study progresses, it is the Department's intent to consider adding the Beulah Road interchange to the Strategic Intermodal System (SIS) by evaluating information obtained from the study to determine if the facility will function as a SIS corridor. If the information supports the need to add Beulah Road to the SIS, phases of the project beyond the PD&amp;E phase would be eligible for SIS funds</i>					
4167482	SR 87 North (SRC)	CR 87A (Langley Street)	TPO Urban Boundary	PD&E – Complete Design – Underway ROW Construction	Widen to 4 lanes	5

<sup>1</sup>Phase NOT currently funded in the Transportation Improvement Program (TIP) or FDOT Five Year Work Program

<sup>2</sup>Current PD&E limits is from West of Nine Mile Road to West of US 29 (SR 95). Escambia County requests the PD&E Limits be Alabama State Line to West of US 29.

**Table 4: FY 19 - 23 Strategic Intermodal System (SIS) Project Priorities – Florida**

FDOT Item-Segment	Project Name	From	To	Phases in <b>Green</b> are Cost Feasible with State/Federal Funds in the 2040 LRTP - <b>Red</b> phases are NOT Cost Feasible with State/Federal Funds	Improvement	FY 19-23 Priority Ranking
4210121	Blue Angel Parkway (ESC)	Sorrento Road	US 98	PD&E – Complete	Widen to 4 lanes	6
				Design – Underway		
				ROW Funded in FY 20/21 with local funds		
4167483	SR 87 Connector (SRC)	SR 87 South	SR 87 North	Construction		
				PD&E – Underway		
				Design – Funded FY 18/19		
NA	Blue Angel Parkway (ESC)	US 98	Saufley Field Road	ROW	Widen to 4 lanes	8
				Construction		
				PD&E – Complete		
2204265	US 98 (SR 30) (SRC)	East of Ramble Bay Lane	Okaloosa County Line	Design <sup>1</sup>	Widen to 6 lanes	9
				ROW		
				Construction		
NA	US 98 (SR 30) (ESC)	Florida-Alabama State Line	Blue Angel Parkway	PD&E – Underway	Widen to 4 lanes	10
				Design – Funded FY 20/21 and FY 21/22		
				ROW		
NA	US 98 (SR 30) (SRC)	At SR 399		Construction	Major Intersection Improvement	11
				PD&E <sup>1</sup>		
				Design <sup>1</sup>		
				ROW		
				Construction		
				PD&E – Complete		

<sup>1</sup>Phase NOT currently funded in the Transportation Improvement Program (TIP) or FDOT Five Year Work Program.

**Table 4: FY 19 - 23 Strategic Intermodal System (SIS) Project Priorities – Florida**

FDOT Item-Segment	Project Name	From	To	Phases in <b>Green</b> are Cost Feasible with State/Federal Funds in the 2040 LRTP - <b>Red</b> phases are NOT Cost Feasible with State/Federal Funds	Improvement	FY 19-23 Priority Ranking
2204262	US 98 (SR 30) (SRC)	Portside Drive	East of Ramble Bay Lane	PD&E – Underway	Widen to 6 lanes	12
				Design <sup>1</sup>		
				ROW		
				Construction		
NA	I-10 (ESC)	US 29	Davis Highway	PD&E <sup>1</sup>	Widen to 8 lanes	13
				Design <sup>1</sup>		
				ROW		
				Construction		

<sup>1</sup>Phase NOT currently funded in the Transportation Improvement Program (TIP) or FDOT Five Year Work Program.

DRAFT

**Table 5: FY 19 - 23 Capacity Project Priorities – Alabama**

ALDOT Item-Segment	Project Name	From	To	Phases in <b>Green</b> are Cost Feasible with State/Federal Funds in the 2040 LRTP - <b>Red</b> phases are NOT Cost Feasible with State/Federal Funds	Improvement	FY 19-23 Priority Ranking
100066601 100040566 100040567 100040568	SR 180 (Canal Road)	SR 59	Foley Beach Expressway	Design – Underway ROW– Funded FY 18/29 Utilities – Funded FY 19/20 Construction – Funded in FY 20/21	Widen to 5 lanes	1
100066422 100040588 100040589	SR 180 (Canal Road)	Foley Beach Expressway	SR 161 (Orange Beach Boulevard)	Design – Underway Utilities – Funded FY 20/21 Construction – Funded in FY 21/22	Widen to 5 lanes	2

<sup>1</sup>Phase NOT currently funded in the Transportation Improvement Program (TIP) or ALDOT Five Year Work Program

DRAFT

**Table 6: FY 19 - 23 Committed Transportation Systems Management (TSM) Project Priorities  
Not Subject to Priority Ranking**

Construction funded in the first three years of the Transportation Improvement Program or Underway

FDOT Item-Segment	Construction Scheduled	Project Description/Limits	Improvement
NA	FY 13/14 – Push Button Project (ESC)	SR 727 (Fairfield Drive) @ SR 10A (Mobile Highway) <sup>1</sup>	Extend Southbound right turn lane to 500 feet
NA	FY 13/14 – Push Button Project (ESC)	SR 727 (Fairfield Drive) @ SR 10A (Mobile Highway) <sup>1</sup>	Construct Eastbound right turn lane with 200 feet of storage
4317851 (ESC)	FY 16/17	SR 742 (Creighton Road) @ SR 289 (9 <sup>th</sup> Avenue)	Construct dual Eastbound left turn lanes with 495 feet of storage.
4317852 (ESC)	FY 16/17	SR 289 (9 <sup>th</sup> Avenue) @ SR 742 (Creighton Road)	Construct dual Northbound left turn lanes with 495 feet of storage
4334481 (ESC)	FY 16/17	SR 10A (Mobile Highway) @ Woodside Drive	Construct a Westbound left turn lane with 150 feet of storage
4382761 (ESC)	FY 16/17	SR 291 (N. Davis Highway) @ University Parkway	Install Advance Warning Street Signs on Southbound Approach Intersections Install Retro Reflective Backplates Install Supplemental Post Mounted Signal Head
4367191 (ESC)	FY 17/18	SR 295 (New Warrington Rd) @ CR 298A (Jackson Street)	Construct Northbound right turn lane and Southbound right turn lane on SR 295; Redesign the existing northbound and southbound left-turn lanes on SR 295; and Extend eastbound and westbound left-turn lanes on W. Jackson to provide at least 150 feet of storage
4367241 (ESC)	FY 17/18	SR 10A (US 90) Mobile Highway @ CR 99 (Beulah Road)	Construct turn lane and Traffic Signal Cross Drain improvements on Mobile Highway
4381501 (ESC)	FY 17/18	Escambia County Video Camera Vehicle Detection	Installation of Video Detection Equipment at a total of nine intersections on SR 10A (Nine Mile Road), SR 295 (New Warrington Road), and SR 95 (US 29)
4367201 (ESC)	FY 18/19	SR 292 (Gulf Beach Highway) @ SR 727 (Fairfield Drive)	Construct Westbound right turn lane channelized and Southbound left turn lane with 100 feet of storage, signalization upgrade
4406581 (ESC)	FY 19/20	SR 292 (Gulf Beach Highway) @ Patton Drive SR 292 (Gulf Beach Highway) @ Sunset Avenue	1 - Signalize Patton Drive and Sunset Avenue 2 - Access management to intersection turn lanes 3 - Widen road to facilitate turn lane improvements

<sup>1</sup>Project will be completed under FDOT Item Segment #430785-1 Mobile Highway Resurfacing Project from Edison Drive to Lynch Street.



**Table 7: FY 19 - 23 Transportation Systems Management (TSM) Project Priorities**

FDOT Item-Segment	FY 19-23 Priority Ranking	Major Street	Minor Street	Description	Estimated Costs
N/A	1	SR 292 (Sorrento Road) (ESC)	CR 293 (Bauer Road)	1 - Construct Eastbound Right Turn Lane 2 - Construct Northbound Right Turn Lane 3 - Extend Westbound Left Turn Lane 4 - Extend Westbound Right Turn Lane 5 - Reconfigure Signal Hardware	\$804,274 for Construction \$111,400 for ROW
N/A	2	SR 30 (US 98) (SRC)	Luneta Prado	1 - Access Management 2 - Additional Turn Lanes	\$310,210 for Construction \$100,000 for ROW
4399641	3	SR 292 (Sorrento Road) (ESC)	CR 292A (Innerarity Point Road)	1 – Construct Southbound Right Turn Lane 2 – Construct Westbound Right Turn Lane 3 – Extend Eastbound Left Turn Lane	\$904,735 for Construction \$236,000 for ROW
N/A	4	SR95 (US29) (ESC)	CR 186 (Kingsfield Road)	1. Reconstruct Span Wire Signal 2. Construct Eastbound Right Turn Lane 3. Reconstruct Railroad Grade Crossing	\$640,718 for Construction \$0 for ROW
N/A	5	State System wide		1 - Uninterrupted Power Supply Upgrades to Intersections	In Progress

*Note: The TPO is actively seeking additional projects for the TSM project priority list. These projects may come from existing and future corridor studies as well as requests from the TPO or the general public.*

**Table 8: FY 19 - 23 Committed Transportation Alternatives Program (TAP) Project Priorities – Florida  
Not Subject to Priority Ranking**

Construction funded in the first three years of the Transportation Improvement Program or Underway

FDOT Item-Segment	Project Name	From	To	Description
4370851	Bauer Road (ESC)	Sorrento Rd	Gulf Beach Hwy	This project will install paved shoulders along both sides of Bauer Rd in Escambia County. The project length is approximately 1.29 miles and begins at Sorrento Rd (SR-292) and ends at Gulf Beach Hwy (CR-292A). This project will connect to existing paved shoulders on Gulf Beach Hwy and will terminate at the entrance to Big Lagoon State Park. Funded in FY 16/17.
4370872	Glover Lane	Hobbs Middle School	Hamilton Bridge Road	Project will install 2,800 feet of sidewalk on the west side of Glover Lane connecting Hobbs Middle School to Hamilton Bridge Road. Funded in FY 17/18.
4369851	King Middle School Sidewalks (SRC)	Stewart St	Dogwood Dr	Project is located between SR87 (Stewart St) and SR89 (Dogwood Dr) with 5,945 feet of sidewalk installation. On the east side of Byrom St, north of Magnolia St, 2,640 feet of sidewalk will connect Magnolia St and Rosasco St. The 505 foot, north side of the King St sidewalk will connect SR87 (Stewart St) to Byrom St. Rosasco St is a connector between SR87 (Stewart St) and SR89 (Dogwood Dr). A 2,800 foot sidewalk will be located on the north side of Rosasco St. Funded in FY 17/18
4335752	Blackwater Heritage Trail Connector (SRC)	Old US 90	Henry Street	Sidewalk on north side of Old Highway 90 from Blackwater Heritage Trail to Henry Street. Funded in FY 17/18
4370871	Hamilton Bridge Road (SRC)	East Spencer Field Rd	Emerald Dr	Design and construction of 5,500feet of sidewalk on the north side of Hamilton Bridge Rd. from East Spencer Field to Crystal Creek subdivision. Funded in FY 18/19.

**Table 9: FY 19 - 23 Transportation Alternatives Program (TAP) Project Priorities – Florida**

FDOT Item-Segment	FY 19-23 Priority Ranking	Project Name	From	To	Description
4381142	1	Old Bagdad Highway (SRC)	Avalon Boulevard on the west to the entrance of County Optimist Park	East Side of Parkmore Plaza Drive to Highway 90	Project will construct 4,470 ft of 5' ft sidewalk on the north side of Old Bagdad Highway from Avalon Boulevard on the west to the entrance of County Optimist Park on the east. A 5 ft sidewalk will also go from Old Bagdad Highway south along the east side of Parkmore Plaza Drive to Highway 90. Construction funded in FY 21/22.
4407411	2	Tom King Bayou Pedestrian Bridge (SRC)	East Bayou Blvd CR 399		The East Bay Boulevard, CR 399 multi-use path is approximately 10 miles long stretching from US 98 on the southwest boundary to SR 87 on the northeast boundary. The Tom King Bayou Pedestrian Bridge is the last connection that will allow a safer interaction between the two sides for all disabled, elderly and youth populations. Construction funded in FY 20/21
NA	3	Pensacola Beach Ferry Service Landing Site (ESC)	Quietwater Beach		Project will be for construction of landside and waterside facilities for the Ferry Landing site, this includes but is not limited to a dock additions, handrails, boat ramps, shade pavilions etc.
NA	4	Fairpoint to Shoreline Multi-use Pathway (SRC) <sup>1</sup>	Fairpoint Drive	Shoreline Drive	Project will form a collected loop for multi-use pathway and boardwalk trail on Shoreline Drive, Fairpoint Drive, and wetlands boardwalk trail south of Shoreline Drive in Gulf Breeze. 3.93 mile
NA	5	Henry Street (SRC)	Old Bagdad Hwy	Canal St	Sidewalk Design - Project is a sidewalk on the both sides of Henry Street (CR 191), 5,250 ft.
NA	6	South Chemstrand Road (ESC)	Johnson Avenue	Nine Mile Road	This project will install sidewalks along Chemstrand Rd in Escambia County. The project length is approximately 1.0 miles and begins at Johnson Ave and ends at Nine Mile Rd (SR-10). This project will provide a connection to sidewalks on Johnson Ave
4335772	7	Saufley Field Road (ESC)	Mobile Highway	Saufley Field Gate	Project will construct Sidewalks on both sides of Saufley Field Rd, CR-296. The project length is approximately 2.1 miles and begins at Mobile Hwy. SR-10A, and ends at the front gate of Naval Air Station Saufley Field. Design Funded in FY 14/15.

<sup>1</sup>If Priority #4 (Fairpoint to Shoreline Multi-Use Pathway) is determined not to be acceptable for TAP funding, fund Priority #11 (Panhandle Trail/Military Trail) instead.

**Table 9: FY 19 - 23 Transportation Alternatives Program (TAP) Project Priorities – Florida**

FDOT Item-Segment	FY 19-23 Priority Ranking	Project Name	From	To	Description
NA	8	Perdido Key Drive (ESC)	Perdido Key State Park Entrance	Theo Baars Bridge	This project will provide for construction of a ten' wide multi-use path on the north side of Perdido Key Dr. (SR 292) along with 5' concrete sidewalks on the south side connecting heavily developed areas on Perdido Key. 3.86 miles
NA	9	Olive Road Phase II(ESC)	Cody Lane	Davis Highway	This project will install sidewalks on the north side of Olive Rd (CR-290) in Escambia County. The project length is approximately 1.03 miles and begins at Cody Ln and ends at Davis Hwy (SR-291). Escambia County has recently completed construction on Olive Rd which included resurfacing, miscellaneous drainage and water main upgrades. Sidewalks were not included in the project due to budget constraints.
NA	10	Chemstrand Road (ESC)	Nine Mile Rd	Ten Mile Rd	Install sidewalks along both sides of Chemstrand Rd (CR-749) in Escambia County. The project length is approximately 1.0 mile and begins at Nine Mile Rd (SR-10) and ends at Ten Mile Rd.
NA	11	Panhandle Trail and Military Trail (SRC) <sup>1</sup>	Navarre Parkway	East River Drive	5,350 ft bike lanes on Panhandle Trail and 1,300 sidewalk on Military Trail
NA	12	Pace Lane (SRC)	Skipper Lane	Highway 90	Project will construct 1550 ft of 6' ft sidewalk along the west side of Pace Lane from Skipper Lane to US 90.
NA	13	Olive Road Phase I (ESC)	Palafox Street	Cody Lane	This project will install sidewalks on the north side of Olive Rd (CR-290) in Escambia County. The project length is approximately 1.3 miles and begins at Palafox St (CR-95A) and ends at Cody Ln.
NA	14	Dog Track Road (Esc)	Blue Angel Pkwy	Lillian Highway	This project will install paved shoulders along both sides of Dog Track Rd (CR-297) in Escambia County. The project length is approximately 2.06 miles and begins at Lillian Hwy (SR-30) and ends at Blue Angel Pkwy (SR-173).
NA	15	Stefani Road and Nine ½ Mile Road (ESC)	Stefani Road	Nine and One Half Mile Road	This project will install sidewalks on the east side of Stefani Rd between Nine Mile Rd and Nine & ½ Mile Rd (0.5 miles) in Escambia County. Sidewalks are also proposed along the north side of Nine & ½ Mile Rd between Pine Forest Rd and Stefani Rd (0.75 miles).
NA	16	Pace Lane (SRC)	Skipper Lane	Matthew Road	Project is for design only of a sidewalk on the west side of Pace Lane from the intersection of Skipper Lane to Mathew Road, southward for 3,350 LF

<sup>1</sup>If Priority #4 (Fairpoint to Shoreline Multi-Use Pathway) is determined not to be acceptable for TAP funding, fund Priority #11 (Panhandle Trail/Military Trail) instead.

**Table 10: FY 19 - 23 Committed Transportation Alternatives Program (TAP) Project Priorities – Alabama  
Not Subject to Priority Ranking**

Construction funded in the first three years of the Transportation Improvement Program or Underway

ALDOT Item- Segment	Project Name	From	To	Description
NA				

DRAFT

**Table 11: FY 19 - 23 Transportation Alternatives Program (TAP) Project Priorities – Alabama**

ALDDOT Item-Segment	FY 19-23 Priority Ranking	Project Name	From	To	Description
NA	1	Orange Beach Canal Road District Project (BAL)	SR 161	Foley Beach Express	Project will consist of two sections of new concrete sidewalk. Section One will construct 12,532 linear feet of concrete sidewalk along SR 180 and the West Florida Avenue right-of-way. Section Two will construct 1,223 linear feet of concrete sidewalk along the south side of SR 180 from West Florida Avenue to tie into an existing 6-foot wide concrete sidewalk.

DRAFT

**Table 12: FY 19 - 23 Committed Bicycle & Pedestrian Projects – Florida**  
**Not Subject to Priority Ranking**

Construction funded in the first three years of the Transportation Improvement Program or Underway

FDOT Item-Segment	Road Name	From	To	Mode	Recommended Facility Type/Improvement
N/A					

DRAFT

**Table 13: FY 19 - 23 Bicycle & Pedestrian Project Priorities – Florida**

FDOT Item-Segment	FY 19-23 Priority Ranking	Road Name	From	To	Mode	Recommended Facility Type/Improvement
4389081	1	SR 292 Perdido Key Dr. (ESC)	Park Entrance	Gongora Drive	Bike/Ped	Sidewalks/Multi-Use Path
4389082	2	SR 292 Perdido Key Dr. (ESC)	Alabama State Line	Park Entrance	Bike/Ped	Sidewalks/Multi-Use Path
4257455	3	Old Corry Field Road (CR 295A) Navy Blvd Alt. Bike Route (ESC)	SR 292 Barrancas Avenue	SR 30 (N. Navy Blvd.)	Bike/Ped	1.217 miles of Paved Shoulders
2186302	4	US 98 (ESC)	New Warrington Road	Bayou Chico Bridge	Pedestrian	1.326 miles of Bicycle/Pedestrian Features
NA	5	Davis Highway (ESC)	Fairfield Drive	Schubert Drive	Bicycle	2.785 miles, Designate bike lane if possible or re-stripe for wide outside lane
NA	6	9 <sup>th</sup> Avenue (ESC)	Creighton Road	Bayou Boulevard	Bicycle	2.041 miles, Designated bike lane if possible or re-stripe for wide outside lane
NA	7	9 <sup>th</sup> Avenue (ESC)	Cervantes Street	Bayfront Parkway	Bicycle	0.858 miles Designated bike lane if possible or re-stripe for wide outside lane
NA	8	Sorrento Road/ Gulf Beach Highway (ESC)	CR 297	Patton Drive	Pedestrian	3.75 miles Sidewalks both sides
NA	9	Johnson Avenue (ESC)	US 29	Olive Road	Bike	6.135 miles Paved shoulders
NA	10	Langley Avenue (ESC)	Scenic Heights Elementary School	Leesway Boulevard	Pedestrian	Medians and pedestrian crossing
NA	11	US 98 Gulf Islands National Seashore Eastbound alternative route (SRC)	3 Mile Bridge	Fairpoint Drive	Bicycle	2.07 miles Paved with shoulders and signage
			Fairpoint Drive	Sunset Drive		
			Sunset Drive	Shoreline Drive		
			Shoreline Drive	US 98		
NA	12	US 98 Gulf Islands National Seashore Westbound alternative route (SRC)	McClure	Joachim	Bicycle	0.931 miles Paved with shoulders and signage
			Joachim	Daniel		
			N. on Daniel / Kenilworth	Northcliff		
			Northcliff	US 98		
NA	13	Park Ave (SRC)	SR 89	Byrom Street	Pedestrian	.505 miles sidewalks north side
			Byrom Street	SR 87	Pedestrian	0.27 miles Sidewalks south side
			SR 87	Blackwater Heritage Trail	Pedestrian	.073 miles sidewalks on both sides



**Table 13: FY 19 - 23 Bicycle & Pedestrian Project Priorities – Florida**

FDOT Item-Segment	FY 19-23 Priority Ranking	Road Name	From	To	Mode	Recommended Facility Type/Improvement
N/A	14	Creighton Road SR 742 (ESC)	Plantation Road	Davis Highway	Bicycle	Restripe Candidate
NA	15	Garden/Alcaniz SR 30 (US 98) (ESC)	Tarragona Street	Gregory Street	Bicycle	Road Diet Candidate
NA	16	12th Avenue (ESC)	Fairfield Drive	Bayou Boulevard	Bicycle	Restripe Candidate
NA	17	E Street CR 443 (ESC)	Cross Street	Texar Drive	Bicycle	Restripe Candidate
NA	18	SR 95 (US 29) (ESC)	Pace Boulevard/SR 292	Brent Lane/SR 296	Bicycle	Restripe Candidate
NA	19	Saufley Field Road CR 296 (ESC)	Muldoon Road	Mobile Highway	Bicycle	Restripe Candidate
NA	20	Gulf Beach Highway SR 292 (ESC)	Fairfield Drive/SR 727	Navy Boulevard/SR 295	Bicycle	Restripe Candidate
NA	21	9th Avenue (SR 289) (ESC)	Bayou Boulevard/SR 296	Langley Avenue	Pedestrian	Add Sidewalk (Minor Regrading)
NA	22	17th Avenue (ESC)	Bayfront Parkway	South of RR Tracks	Pedestrian	Add Sidewalk (Minor Regrading)
NA	23	Fairfield Drive (SR 295) (ESC)	New Warrington Road	"W" Street/CR 453	Pedestrian	Add Sidewalk (Minor Regrading)
NA	24	Scenic Highway SR 10A(US 90) (ESC)	Strong Street	Hyde Park Road	Pedestrian	Add Sidewalk (Minor Regrading)
NA	25	SR 10 (US 90) (SRC)	SR 281/Avalon Boulevard	SR 87/Stewart Street	Bicycle	Restripe Candidate
NA	26	Chiefs Way (SR 294) (ESC)	SR 295/New Warrington Road	US 98/Navy Boulevard	Bicycle	Add Paved Shoulders - Minor
NA	27	Garden Street/Alcaniz SR 30 (US 98) (ESC)	Tarragona Street	Gregory Street	Pedestrian	Add Sidewalk (Minor Regrading)
NA	28	Chiefs Way (SR 294) (ESC)	SR 295/New Warrington Road	US 98/Navy Boulevard	Pedestrian	Add Sidewalk (Minor Regrading)
NA	29	Chase Street/1 Way EB (Bus US 98) (ESC)	North Palafox Street	9th Avenue	Pedestrian	Add Sidewalk (Minor Regrading)
NA	30	E Burgess Road (SR 742) (ESC)	Plantation Road	Davis Highway/SR 291	Bicycle	Add Paved Shoulders - Major
NA	31	Bayou Boulevard & Perry Avenue (ESC)	Hyde Park Road	Baldwin Avenue	Bicycle	Add Paved Shoulders - Minor
NA	32	Bayou Boulevard & Perry Avenue (ESC)	Hyde Park Road	Baldwin Avenue	Pedestrian	Add Sidewalk (Minor Regrading)
NA	33	17th Avenue (ESC)	Bayfront Parkway	South of RR Tracks	Bicycle	DCSN
NA	34	Fairfield Drive (SR 727) (ESC)	Bruce St	Mobile Highway/US 90	Bicycle	Add Paved Shoulders – Minor

**Table 13: FY 19 - 23 Bicycle & Pedestrian Project Priorities – Florida**

FDOT Item-Segment	FY 19-23 Priority Ranking	Road Name	From	To	Mode	Recommended Facility Type/Improvement
NA	35	17th Avenue (ESC)	S of RR Tracks	Cervantes Street/US 90	Bicycle	DCSN
NA	36	W Burgess Road (SR 742) (ESC)	SR 95/Pensacola Boulevard	CR 95A/Old Palafox Highway	Bicycle	Add Paved Shoulders - Major
NA	37	Navy Boulevard (SR 295) (ESC)	Bayou Grande Bridge NE	SR 292/Barrancas Avenue	Pedestrian	Add Sidewalk (Minor Regrading)
NA	38	12th Avenue (ESC)	Fairfield Drive	Bayou Boulevard	Pedestrian	Add Sidewalk (Minor Regrading)
NA	39	Bayou Boulevard & Perry Avenue (ESC)	Baldwin Avenue	DuPont Drive	Bicycle	Add Paved Shoulders - Minor
NA	40	Davis Highway (SR 291) (ESC)	University Parkway	Nine Mile Road/US 90A	Pedestrian	Add Sidewalk (Minor Regrading)
NA	41	Lillian Highway (SR 298) (ESC)	Blue Angel Parkway/SR 173	Fairfield Drive/SR 727	Bicycle	Add Paved Shoulders - Major
NA	42	9th Avenue (SR 289) (ESC)	Dunmire Street	Beau Terra Lane	Bicycle	DCSN
NA	43	Jackson Street (CR 298A) (ESC)	"W" Street	Pace Boulevard	Bicycle	Add Paved Shoulders - Minor
NA	44	Fairfield Drive (SR 727) (ESC)	Bruce Street	Mobile Highway/US 90	Pedestrian	Add Sidewalk (Minor Regrading)
NA	45	Saufley Field Road (CR 296) (ESC)	Blue Angel Parkway	Muldoon Road	Pedestrian	Add Sidewalk (Minor Regrading)
NA	46	Oriole Beach Road (SRC)	Palm Rd	US 98	Bicycle	DCSN
NA	47	Scenic Highway SR 10A(US 90) (ESC)	I-10/SR 8	Baybrook Drive	Pedestrian	Add Sidewalk (Major Regrading)
NA	48	Bayou Boulevard & Perry Avenue (ESC)	Baldwin Avenue	DuPont Drive	Pedestrian	Add Sidewalk (Minor Regrading)
NA	49	Sorrento Road (SR 292) (ESC)	Gulf Beach Highway	Doug Ford Drive	Bicycle	Add Paved Shoulders - Major
NA	50	Main Street (ESC)	Baylen Street	Tarragona Street	Bicycle	DCSN
NA	51	E Street (CR 443) (ESC)	Yonge Street	Cross Street	Bicycle	DCSN
NA	52	Fairfield Drive (SR 295) (ESC)	Davis Highway	SR 289/9th Avenue	Bicycle	DCSN
NA	53	E Burgess Road (SR 742) (ESC)	Plantation Road	Davis Highway/SR 291	Pedestrian	Add Sidewalk (Major Regrading)
NA	54	Gregory Street/1 Way WB (US 98) (ESC)	9th Street	Bayfront Parkway/Chase Street	Pedestrian	Add Sidewalk (Minor Regrading)
NA	55	Olive Road (SR 290) (ESC)	9th Avenue/SR 289	Scenic Highway/SR 10A	Pedestrian	Add Sidewalk (Minor Regrading)
NA	56	Navy Boulevard (SR 295) (ESC)	US 98	SR 295/New Warrington Road	Bicycle	DCSN
NA	57	W Street (CR 453) (ESC)	Cervantes Street	Fairfield Drive	Pedestrian	Add Sidewalk (Minor Regrading)

**Table 13: FY 19 - 23 Bicycle & Pedestrian Project Priorities – Florida**

FDOT Item-Segment	FY 19-23 Priority Ranking	Road Name	From	To	Mode	Recommended Facility Type/Improvement
NA	58	Bauer Road (CR 293) (ESC)	Sorrento Road	Meadson Road	Pedestrian	Add Sidewalk (Major Regrading)
NA	59	New Warrington Road (SR 295) (ESC)	US 98/Navy Boulevard	Martha Lane	Bicycle	Add Paved Shoulders - Minor
NA	60	Mobile Highway SR 10A (US 90) (ESC)	Bellview Avenue	Pine Forest Road/CR 297	Pedestrian	Add Sidewalk (Major Regrading)
NA	61	Sorrento Rd /Gulf Beach Hwy SR 292 (ESC)	Blue Angel Parkway/SR 173	Dog Track Road	Bicycle	Add Paved Shoulders - Major
NA	62	SR 30 (US 98) (SRC)	Fairpoint Drive	Bay Bridge Drive	Bicycle	DCSN
NA	63	Main Street (ESC)	"A" Street	Baylen Street	Pedestrian	Add Sidewalk (Minor Regrading)
NA	64	Bayou Boulevard & Perry Avenue (ESC)	Cervantes Street/US 90	Hyde Park Road	Pedestrian	Add Sidewalk (Minor Regrading)
NA	65	New Warrington Spur (SR 295) (ESC)	Martha Lane	Mobile Highway Interchange	Pedestrian	Add Sidewalk (Minor Regrading)
NA	66	Jackson Street (CR 298A) (ESC)	"W" Street	Pace Boulevard	Pedestrian	Add Sidewalk (Minor Regrading)
NA	67	SR 95 (US 29) (ESC)	Tree Street	Morris Avenue	Pedestrian	Add Sidewalk (Minor Regrading)
NA	68	Olive Road (SR 290) (ESC)	Davis Highway/SR 291	Kipling Street	Pedestrian	Add Sidewalk (Major Regrading)
NA	69	Mobile Highway SR 10A (US 90) (ESC)	Massachusetts Avenue	Saufley Field Road/CR 296	Pedestrian	Add Sidewalk (Major Regrading)
NA	70	Jackson Street(CR 298A) (ESC)	Pace Boulevard	"A" Street	Pedestrian	Add Sidewalk (Minor Regrading)
NA	71	Pensacola Beach Boulevard CR 399 (ESC)	North end of Bob Sikes Bridge	Via de Luna Drive	Pedestrian	Add Sidewalk (Minor Regrading)
NA	72	W Burgess Road (SR 742) (ESC)	SR 95/Pensacola Boulevard	CR 95A/Old Palafox Highway	Pedestrian	Add Sidewalk (Major Regrading)
NA	73	E Burgess Road (SR 742) (ESC)	Confederate Drive	Creighton Road	Pedestrian	Add Sidewalk (Major Regrading)
NA	74	Davis Highway (SR 291) (ESC)	Brent Lane/SR 296	Burgess Road/SR 742	Pedestrian	Add Sidewalk (Minor Regrading)
NA	75	Fairfield Drive (SR 727) (ESC)	65th Avenue	Bruce Street	Pedestrian	Add Sidewalk (Minor Regrading)
NA	76	E Burgess Road (SR 742) (ESC)	Sanders Street	Lanier Drive	Pedestrian	Add Sidewalk (Major Regrading)

**Table 14: FY 19 - 23 Committed Bicycle & Pedestrian Project Priorities – Alabama**  
**Not Subject to Priority Ranking**

Construction funded in the first three years of the Transportation Improvement Program or Underway

ALDOT Item-Segment	Road Name	From	To	Mode	Recommended Facility Type/Improvement
100060029	SR 42 (Alabama US 98) (BAL)	Barclay Avenue	Alabama State Line	Bicycle	Add Paved Shoulders – Major Funded FY 18/19

DRAFT

**Table 15: FY 19 - 23 Bicycle & Pedestrian Project Priorities – Alabama**

ALDOT Item Segment	FY 19-23 Priority Ranking	Road Name	From	To	Mode	Recommended Facility Type/Improvement
100063403 100063404	1	CR 99 (BAL)	Carrier Drive	Spanish Cove Drive	Bicycle	Add Paved Shoulders (Major Regrading)
100063634 100063640	2	CR 99 (BAL)	CR 91	Carrier Drive	Bicycle	Add Paved Shoulders (Major Regrading)
100063635 100063641	3	SR 42 Alabama US 98 (BAL)	Hillcrest Road	Barclay Avenue	Bicycle	Add Paved Shoulders – Major
N/A	4	SR 42 Alabama US 98 (BAL)	Barclay Avenue	Alabama State Line	Pedestrian	Add Sidewalk (Major Regrading)
N/A	5	CR 99 (BAL)	Carrier Drive	Spanish Cove Drive	Pedestrian	Add Sidewalk (Major Regrading)
N/A	6	SR 42 Alabama US 98 (BAL)	SR 91 Sycamore	Hillcrest Road	Bicycle	Add Paved Shoulders – Major
N/A	7	SR 42 Alabama US 98 (BAL)	Hillcrest Road	Barclay Avenue	Pedestrian	Add Sidewalk (Major Regrading)
N/A	8	CR 91 (BAL)	CR 99	US 98	Pedestrian	Add Sidewalk (Major Regrading)
N/A	9	SR 42 Alabama US 98 (BAL)	SR 91 Sycamore	Hillcrest Road	Pedestrian	Add Sidewalk (Major Regrading)
N/A	10	CR 99 (BAL)	CR 91	Carrier Drive	Pedestrian	Add Sidewalk (Major Regrading)

**Table 16: FY 19 - 23 Escambia County Public Transportation Priorities Listed by Grant**

FDOT Item Segment#	Funding Source	%	Project Description	Proposed FY 19 2018-2019	Proposed FY 20 2019-2020	Proposed FY 21 2020-2021	Proposed FY 22 2021-2022	Proposed FY 23 2022-2023
NA	TD – Escambia Trip & Equip Local Funds	90% 10%	Provide non sponsored trips and/or capital equipment to the trans disadv	666,815 74,091	666,815 74,091	666,815 74,091	666,815 74,091	666,815 74,091
NA	TD – Escambia Planning	100%	Planning agency duties for trans disadv planning related service	25,275	25,275	25,275	25,275	25,275
421717	FTA 5305 State Local Funds	80% 10% 10%	FL-AL TPO Planning grant funds	137,184 17,148 17,148	137,184 17,148 17,148	137,184 17,148 17,148	137,184 17,148 17,148	137,184 17,148 17,148
429262-1	FTA 5307 Toll Revenue Credit	80% 20%	Capital – prev. maint, replacement vehicles, expansion vehicles, signage, shelters, transit centers, misc. equip, security and training	1,200,000 300,000	1,200,000 300,000	2,200,000 550,000	2,200,000 550,000	2,200,000 550,000
421733-1 <sup>1</sup>	FTA 5307 FLEX Toll Revenue Credit	80% 20%	Capital – prev. maint, replacement vehicles, expansion vehicles, signage, shelters, transit centers, misc. equip, security and training	300,000 75,000	300,000 75,000	300,000 75,000	300,000 75,000	300,000 75,000
430995-3	FTA 5307 Local Funds	50% 50%	Operating Assistance (Operating costs for equipment and facilities & JARC Projects)	2,000,000 2,000,000	2,000,000 2,000,000	1,000,000 1,000,000	1,000,000 1,000,000	1,000,000 1,000,000

<sup>1</sup>Federal funds of \$300,000 correspond to the Non-SIS Priority 4 in Table 2.

**Table 16: FY 19 - 23 Escambia County Public Transportation Priorities Listed by Grant**

FDOT Item Segment#	Funding Source	%	Project Description	Proposed FY 19 2018-2019	Proposed FY 20 2019-2020	Proposed FY 21 2020-2021	Proposed FY 22 2021-2022	Proposed FY 23 2022-2023
430995-4	FTA 5339 Toll Revenue Credit	80% 20%	Capital – bus and bus related facilities	300,084 75,021	300,084 75,021	300,084 75,021	300,084 75,021	300,084 75,021
430995-2	FTA 5310 State Local Funds	80% 10% 10%	Capital – Enhanced Mobility of Seniors and Individuals with Disabilities	348,400 43,550 43,550	350,000 43,750 43,750	350,000 43,750 43,750	350,000 43,750 43,750	350,000 43,750 43,750
430995-2	FTA 5310 Local Funds	50% 50%	Operating – Enhanced Mobility of Seniors and Individuals with Disabilities	350,000 350,000	350,000 350,000	350,000 350,000	350,000 350,000	350,000 350,000
422257-1	FDOT Block Grant Local Funds	50% 50%	Operating Assistance – Block Grant	830,000 830,000	830,000 830,000	830,000 830,000	830,000 830,000	830,000 830,000
NA	FDOT 5311 State Local Funds	80% 10% 10%	Capital – Rural Assistance	185,958 23,245 23,245	185,958 23,245 23,245	185,958 23,245 23,245	185,958 23,245 23,245	185,958 23,245 23,245
421368-2	FDOT 5311 Local Funds	50% 50%	Operating – Rural Assistance	230,000 230,000	230,000 230,000	230,000 230,000	230,000 230,000	230,000 230,000
422260-1	FDOT	100%	Urban Corridor	420,000	434,059	447,081	450,000	450,000

**Table 17: FY 19 - 23 Santa Rosa County Public Transportation Priorities Listed by Grant**

FDOT Item Segment#	Funding Source	%	Project Description	Proposed FY 19 2018-2019	Proposed FY 20 2019-2020	Proposed FY 21 2020-2021	Proposed FY 22 2021-2022	Proposed FY 23 2022-2023
NA	TD – Santa Rosa T&E Local Funds	90% 10%	Provide non sponsored trips and/or capital equipment to the trans disadv	395,107 43,901	395,107 43,901	395,107 43,901	395,107 43,901	395,107 43,901
NA	TD – Santa Rosa Planning	100%	For planning agency to provide trans disadv planning related service	22,177	22,177	22,177	22,177	22,177
421371-3	FTA 5310 State Local Funds	80% 10% 10%	Capital – Enhanced Mobility of Seniors and Individuals with Disabilities	150,000 18,750 18,750	150,000 18,750 18,750	150,000 18,750 18,750	150,000 18,750 18,750	150,000 18,750 18,750
421371-2	FDOT 5311 Local Funds	50% 50%	Operating – Rural Assistance	130,000 130,000	130,000 130,000	130,000 130,000	130,000 130,000	130,000 130,000



**Table 18: FY 19 - 23 Pensacola International Airport Aviation Project Priorities**

**2019**

Priority Ranking	FDOT Item-Segment	Description	Local	FDOT	FAA/Federal	Total
1	4357176	Construct Hangar Improvements	1,099,600	1,099,600		2,199,200
2	4296094	Design/Construct Parallel Taxiway Extension - SE quadrant	750,000	750,000	2,760,000	4,260,000
3	4296095	Runway 17/35 Extension – Environmental Assessment	750,000	750,000		1,500,000
4	TBA	Purchase Replacement ARFF Vehicle	35,000		665,000	700,000
5	TBA	ARFF Rehabilitation	40,000		360,000	400,000
6	4074361	Airfield Pavement and Lighting (LED) Rehabilitation - Design	15,000		135,000	150,000
		FY 19 Total	2,689,600	2,599,600	3,920,000	9,209,200

**Table 18: FY 19 - 23 Pensacola International Airport Aviation Project Priorities**

**2020**

Priority Ranking	FDOT Item-Segment	Description	Local	FDOT	FAA/Federal	Total
1	4357173	ILS/GPS Approach Runway 17/35 Extension	50,000	50,000	900,000	1,000,000
2	4357176	Construct Hangar Improvements	7,500,000	7,500,000		15,000,000
3	TBA	Airfield Pavement and Lighting (LED) Rehabilitation – Construction	155,500		1,399,500	1,555,000
4	TBA	Taxiway A Rehabilitation - Design	2,500		22,500	25,000
5	TBA	Taxiway B Rehabilitation - Design	2,500		22,500	25,000
		FY 20 Total	7,710,500	7,550,000	2,344,500	17,605,000

**Table 18: FY 19 - 23 Pensacola International Airport Aviation Project Priorities**

**2021**

Priority Ranking	FDOT Item-Segment	Description	Local	FDOT	FAA/Federal	Total
1	4357175	Relocate Helicopter Operations	84,600	84,600	1,530,000	1,699,200
2	TBA	Taxiway A Rehabilitation Phase I – Construction	236,900		2,132,100	2,369,000
3	TBA	Rehabilitate SW Apron - Design	200,000			200,000
		FY 21 Total	521,500	84,600	3,662,100	4,268,200

DRAFT

**Table 18: FY 19 - 23 Pensacola International Airport Aviation Project Priorities**

**2022**

Priority Ranking	FDOT Item-Segment	Description	Local	FDOT	FAA/Federal	Total
1	TBA	Taxiway B Rehabilitation Phase II - Construction	236,100		2,124,900	2,361,000
2	TBA	Rehabilitate SW Apron – Construction	125,000	125,000	2,250,000	2,500,000
3	TBA	GA Industrial Apron - Design	30,000		270,000	300,000
4	TBA	GA Ramp Expansion - Design	30,000		570,000	600,000
5	TBA	Runway 8/26 Pavement Rehabilitation – Design/Bid	650,000	650,000	11,700,000	13,000,000
		FY 22 Total	1,071,100	775,000	16,914,900	18,761,000

**Table 18: FY 19 - 23 Pensacola International Airport Aviation Project Priorities  
2023**

Priority Ranking	FDOT Item-Segment	Description	Local	FDOT	FAA/Federal	Total
1	TBA	Runway 17/35 Extension - Design	750,000	750,000		1,500,000
2	TBA	Taxiway C & D Rehabilitation - Design	25,000	25,000		50,000
3	TBA	Industrial Apron - Construction	500,000	500,000	9,000,000	10,000,000
4	TBA	GA Ramp Expansion - Construction	150,000	150,000	2,700,000	3,000,000
		FY 23 Total	1,425,000	1,425,000	11,700,000	14,550,000

DRAFT

**Table 19: FY 19 - 23 Peter Prince Airport Aviation Project Priorities**

**2019**

Priority	FDOT Item-Segment	Description	Local	FDOT	FAA	Total
1	TBA	Construct three (3) new east apron T hangar Access taxilanes	39,000	39,000	702,000	780,000
2	TBA	Construct parking area (adjacent to existing East apron - Hangar Area)	13,600	54,000		67,600

**2020**

Priority	FDOT Item-Segment	Description	Local	FDOT	FAA	Total
1	TBA	Construct T Hangar (20 units) & apron	356,600	1,426,400		1,783,000
2	TBA	Rehabilitate/Replace Airfield Signage	2,500	2,500	45,000	50,000

**2021**

Priority	FDOT Item-Segment	Description	Local	FDOT	FAA	Total
1	TBA	Rehabilitation / Widening of Existing East Taxiways	55,000	55,000	990,000	1,100,000
2	TBA	Renovate Existing FBO facilities on West Apron)	15,000	15,000	270,000	300,000

**Table 19: FY 19 - 23 Peter Prince Airport Aviation Project Priorities  
2022**

Priority	FDOT Item-Segment	Description	Local	FDOT	FAA	Total
1	TBA	Rehabilitation and Widening of Existing West Taxiway	91,855	91,855	1,653,390	1,837,100

**2023**

Priority	FDOT Item-Segment	Description	Local	FDOT	FAA	Total
1	TBA	Construction of Runway Shoulders	33,,313	33,313	599,625	666,251
2	TBA	Construction of Corporate hangar Access Taxiway	36,000	144,000		180,000

**Table 20: FY 19 - 23 Port of Pensacola Seaport Project Priorities**

**2019**

Project Priority	Project Description	FSTED	CITY	TBD	Estimated Cost
1	No Projects Identified				

**2020**

Project Priority	Project Description	FSTED	CITY	TBD	Estimated Cost
1	Berth 6 Rehabilitation - Construction Phases II & III		TBD	5,000,000	5,000,000
2	Dredging of Berths 1, 2, 3, 5, 6	500,000	TBD		500,000
3	Rail Line and Switch Replacement		TBD	500,000	500,000

FSTED = Florida Seaport Transportation Economic Development Council  
 TBD=To Be Determined  
 Please note the city share is estimated. Exact Cost to be determined.



**Table 20: FY 19 - 23 Port of Pensacola Seaport Project Priorities**

**2021**

Project Priority	Project Description	FSTED	CITY	TBD	Estimated Cost
1	Berth 6 Rehabilitation - Construction Phases II & III		TBD	5,000,000	5,000,000
2	Berthe 5 Condition Assessment	250,000	62,500		312,500
3	Rail Line and Switch Replacement		TBD	500,000	500,000

**2022**

Project Priority	Project Description	FSTED	CITY	TBD	Estimated Cost
1	Berth 5 Rehabilitation - Design Phase		TBD	TBD	TBD

**2023**

Project Priority	Project Description	FSTED	CITY	TBD	Estimated Cost
1	Berthe 5 Rehabilitation – Construction Phase		TBD	TBD	TBD

FSTED = Florida Seaport Transportation Economic Development Council  
 TBD=To Be Determined  
 Please note the city share is estimated. Exact Cost to be determined

**Table 21: FY 19 - 23 Bridge Replacement Project Priorities  
Not Subject to Priority Ranking**

Project Name	From	To	Phases in <b>Green</b> are Cost Feasible with State/Federal Funds in the 2040 LRTP - <b>Red</b> phases are NOT Cost Feasible with State/Federal Funds	Improvement
US98 (SR 30) Phillip D. Beall Sr. Bridge (ESC/SRC)	Pensacola	Gulf Breeze	PD&E Study – Complete	Replacement of existing bridge with a 6 lane facility
			Design – Underway	
			ROW – Complete	
			Construction – Underway	

**Table 22: FY 19 - 23 Congestion Mitigation and Air Quality (CMAQ) Project Priorities**

FDOT Item-Segment	FY 19-23 Priority Ranking	Description	Estimated Costs
NA	1	<b>Northwest Florida Clean Cities Coalition</b> Support staffing of the coalition by the TPO, development of a 5 year Implementation Plan and application for designation as a Clean Cities Coalition by the U.S. Dept. of Energy.	\$50,000
NA	2	<b>TPO Alternatives Fuel Initiative</b> This initiative provides for the conversion of fleets within the TPO region to alternative fuels (CNG, biofuel, electric, etc.) as well as the provision of fuel delivery infrastructure.	\$200,000
NA	3	<b>TPO Commuter Services Program</b> Funds support administration of the Program by the TPO, software maintenance, outreach and other promotional efforts.	\$75,000

**Appendix A – Regional Intelligent Transportation System (ITS) Plan Projects**

DRAFT



ESCAMBIA/SANTA ROSA COUNTY REGIONAL ATMS MASTERPLAN QUANTITIES - Per Network Ring

PREPARED BY ATKINS  
November 23, 2015  
Version 3.0



ESCAMBIA/SANTA ROSA COUNTY REGIONAL ATMS MASTERPLAN QUANTITIES - Per Network Ring

PREPARED BY ATKINS

November 23, 2015  
Version 3.0

**TMC Modifications**

		Unit:	Quantity:	Note:	Unit Price:	Total:
<b>Escambia</b>						
Description :						
Video Monitor Wall	EA	1			\$ 50,000.00	\$ 50,000.00
Workstations and Printers	EA	1			\$ 4,000.00	\$ 4,000.00
Network Wiring/Equipment	LS	1			\$ 26,000.00	\$ 26,000.00
Electrical/Lighting Modifications	LS	1			\$ 15,000.00	\$ 15,000.00
Arch/Mechanical Modifications	LS	1			\$ 30,000.00	\$ 30,000.00
Workstation Consoles	LS	1			\$ 4,000.00	\$ 4,000.00
Software Licenses	LS	1			\$ 20,000.00	\$ 20,000.00
Building Permits	LS	1			\$ 5,000.00	\$ 5,000.00
Servers and Central Management Software	LS	1			\$ -	\$ -
						<b>\$ 154,000.00</b>
<b>Pensacola</b>						
Description :						
Video Monitor Wall	EA	1			\$ 50,000.00	\$ 50,000.00
Workstations and Printers	EA	1			\$ 4,000.00	\$ 4,000.00
Network Wiring/Equipment	LS	1			\$ 26,000.00	\$ 26,000.00
Electrical/Lighting Modifications	LS	1			\$ 20,000.00	\$ 20,000.00
Arch/Mechanical Modifications	LS	1			\$ 45,000.00	\$ 45,000.00
Workstation Consoles	LS	1			\$ 4,000.00	\$ 4,000.00
Software Licenses	LS	1			\$ 20,000.00	\$ 20,000.00
Building Permits	LS	1			\$ 5,000.00	\$ 5,000.00
Servers and Central Management Software	LS	1			\$ -	\$ -
						<b>\$ 174,000.00</b>
<b>TMC SubTotal</b>						
					\$	\$ 328,000.00
101-1 Mobilization	LS	1			\$ 32,800.00	\$ 32,800.00
999-25 Contingency Amount - Initial	LS	1			\$ 36,080.00	\$ 36,080.00
<b>TMC Modifications Total</b>						<b>\$ 396,880.00</b>



ESCAMBIA/SANTA ROSA COUNTY REGIONAL ATMS MASTERPLAN QUANTITIES - Per Network Ring

PREPARED BY ATKINS

November 23, 2015  
Version 3.0

Ring No. 1/2

Intersections:

- 1 SR-30/SR-196/Bayfront Pkwy at 17th Ave
- 2 SR-30/Chase St at SR-196/Bayfront Pkwy
- 3 SR-30/Chase St at US-98/9th Ave
- 4 Chase St at Tarragona St
- 5 Chase St at Palafox St
- 6 Chase St at Baylen St
- 7 Gregory St at Taragona St
- 8 Gregory St at Palafox St
- 9 Gregory St at 9th Ave
- 10 Gregory St at Alcaniza St
- 11 Wright St at Palafox St
- 12 US-29/SR-95/Palafox St at Blount St

- 13 US-29/SR-95/Palafox St at Blount St
- 14 US-29/SR-95/Palafox St at Jordan St
- 15 US-29/SR-95/Palafox St at Maxwell St
- 16 US-29/SR-95/Palafox St at Cross St/Leonard St
- 17 SR-291/DR MLK JR Dr at Blount St
- 18 Blount St at Davis Hwy
- 19 Blount St at SR-289/9th Ave
- 20 Jordan St at SR-289/9th Ave
- 21 SR-291/DR MLK JR Dr at Maxwell St
- 22 SR-291/DR MLK JR Dr at SR-752/Texar Dr
- 23 SR-752/Texar Dr at Davis Hwy
- 24 SR-752/Texar Dr at SR-289/9th Ave

- 25 SR-752/Texar Dr at 12th Ave

Existing Under Phase 1 (not replaced):

- 1 US-29/SR-95/Palafox St at SR-752/Texar Dr (\*\*MMH)

Pay Item Number:	Description:	Unit:	Quantity:	Note:	Unit Price:	Total:
630-2-11	Conduit, F&I, Open Trench	LF	8686		\$ 5.33	\$ 46,294.60
630-2-12	Conduit, F&I, Directional Bore	LF	17371		\$ 11.60	\$ 201,507.47
630-2-15	Conduit, F&I, Bridge Mount	LF	2916		\$ 16.51	\$ 48,143.16
633-1-114	Fiber Optic Cable, F&I, Overhead, 144 Fibers	LF	3801		\$ 3.15	\$ 11,973.15
633-1-124	Fiber Optic Cable, F&I, Underground, 144 Fibers	LF	31707		\$ 2.81	\$ 89,096.67
633-2-31	Fiber Optic Connection, Install, Splice	EA	244		\$ 49.53	\$ 12,085.32
633-3-11	Fiber Optic Connection Hardware, F&I, Splice Enclosure	EA	25		\$ 916.75	\$ 22,918.75
633-3-12	Fiber Optic Connection Hardware, F&I, Splice Tray	EA	37		\$ 99.05	\$ 3,664.85
633-3-15	Fiber Optic Connection Hardware, F&I, Preterminated Patch Panel	EA	25		\$ 238.82	\$ 5,970.50
635-2-12	Pull & Splice Box, F&I, 24"X36" Cover Size	EA	13		\$ 858.43	\$ 11,159.59
635-2-13	Pull & Splice Box, F&I, 30" X 60" Rectangular or 36" Round Cover Size	EA	25		\$ 1,478.04	\$ 36,951.00
635-3-12	Junction Box, F&I, Mounted	EA	4		\$ 842.56	\$ 3,370.24
639-1-122	Electrical Power Service, F&I, Underground	EA	25		\$ 1,210.61	\$ 30,265.25
639-3-11	Electrical Service Disconnect, F&I, Pole Mount	EA	25		\$ 896.74	\$ 22,418.50
641-2-12	Prestressed Concrete Pole, F&I, Type P-II Service Pole	EA	25		\$ 737.36	\$ 18,434.00
670-5-112	Traffic Controller Assembly, F&I, NEMA, 2 Preemption Plan	AS	25		\$ 22,500.00	\$ 562,500.00
682-1-11	ITS CCTV Camera, F&I, Dome Enclosure - Pressurized	EA	13		\$ 9,450.00	\$ 122,850.00
684-1-1	Managed Field Ethernet Switch, F&I	EA	25		\$ 2,360.68	\$ 59,017.00
101-1	Mobilization	LS	\$ 65,431.00			
102-1	Maintenance of Traffic	LS	\$ 65,431.00			
677-1-11	Equipment Shelter - Master Hub	EA	\$ 25,000.00			
999-25	Contingency Amount Initial	\$	146,448.21			
			<b>Ring Total:</b>		<b>\$</b>	<b>1,610,930.26</b>



ESCAMBIA/SANTA ROSA COUNTY REGIONAL ATMS MASTERPLAN QUANTITIES - Per Network Ring

PREPARED BY ATKINS

November 23, 2015  
Version 3.0

Ring No. 3/4

Intersections:

- |   |  |   |   |
|---|--|---|---|
| 1 US-90/SR-10A/Cerbantes St at Perry Ave              | 13 US-90/SR-10A/Cerbantes St at CR-443/E St      | 25 SR-292/Pace Blvd at St Mary Ave                              | 37 Business US-98/SR-30/Garden St at SR-292/Barrancas Ave |
| 2 US-90/SR-10A/Cerbantes St at 17th St                | 14 US-90/SR-10A/Cerbantes St at SR-292/Pace Blvd | 26 CR-453/W St at Jackson St                                    | 38 Business US-98/SR-30/Garden St at A St                 |
| 3 US-90/SR-10A/Cerbantes St at 12th St                | 15 US-90/SR-10A/Cerbantes St at T St             | 27 CR-453/W St at Moreno St                                     | 39 Business US-98/SR-30/Garden St at Spring St            |
| 4 US-90/SR-10A/Cerbantes St at SR-289/9th Ave         | 16 US-90/SR-10A/Cerbantes St at CR-453/W St      | 28 CR-453/W St at Avery St                                      | 40 Business US-98/SR-30/Garden St at Baylen St            |
| 5 US-90/SR-10A/Cerbantes St at Davis Hwy              | 17 US-90/SR-10A/Cerbantes St at Shoemaker St     | 29 CR-453/W St at Scott St                                      | 41 Business US-98/SR-30/Garden St at Palatka St           |
| 6 US-90/SR-10A/Cerbantes St at Dr. MLK Jr Dr          | 18 US-90/SR-10A/Cerbantes St at Green St         | 30 CR-295A/Old Corry Field Rd at SR-294/Chiefs Way              | 42 Business US-98/SR-30/Garden St at Jefferson St         |
| 7 US-90/SR-10A/Cerbantes St at Hayne St               | 19 CR-443/E St at Avery St                       | 31 Palatka St at Main St (MH**)                                 | 43 Business US-98/SR-30/Garden St at Taragona St          |
| 8 US-90/SR-10A/Cerbantes St at US-29/SR-95/Palatka St | 20 CR-443/E St at Jordan St                      | 32 Business US-98/SR-30/Navy Blvd at CR-295A/Old Corry Field Rd | 44 SR-295/SR-727/SR-752/Texas Dr at CR-443/E St           |
| 9 US-90/SR-10A/Cerbantes St at I-110 (SB)             | 21 CR-443/E St at Leonard St                     | 33 Business US-98/SR-30/Navy Blvd at SR-294/Chiefs Way          |   |
| 10 US-90/SR-10A/Cerbantes St at Baylen St             | 22 CR-443/E St at Moreno St                      | 34 Business US-98/SR-30/Navy Blvd at CR-453/W St                |   |
| 11 US-90/SR-10A/Cerbantes St at Spring St             | 23 SR-292/Pace Blvd at Jackson St                | 35 Business US-98/SR-30/Navy Blvd at SR-292/Pace Blvd           |   |
| 12 US-90/SR-10A/Cerbantes St at A St                  | 24 SR-292/Pace Blvd at Jordan St                 | 36 Business US-98/SR-30/Garden St at E St                       |   |

Pay Item Number:	Description:	Unit:	Quantity:	Note:	Unit Price:	Total:
630-2-11	Conduit, F&I, Open Trench	LF	20894		\$ 5.33	\$ 111,363.24
630-2-12	Conduit, F&I, Directional Bore	LF	41787		\$ 11.00	\$ 459,733.07
630-2-15	Conduit, F&I, Bridge Mount	LF	6861		\$ 16.51	\$ 113,275.11
633-1-114	Fiber Optic Cable, F&I, Overhead, 144 Fibers	LF	17263		\$ 3.15	\$ 54,378.45
633-1-124	Fiber Optic Cable, F&I, Underground, 144 Fibers	LF	72681		\$ 2.81	\$ 204,233.61
633-2-31	Fiber Optic Connection, Install, Splice	EA	320		\$ 49.53	\$ 15,849.60
633-3-11	Fiber Optic Connection Hardware, F&I, Splice Enclosure	EA	44		\$ 916.75	\$ 40,337.00
633-3-12	Fiber Optic Connection Hardware, F&I, Splice Tray	EA	56		\$ 99.05	\$ 5,546.80
633-3-15	Fiber Optic Connection Hardware, F&I, Preterminated Patch Panel	EA	44		\$ 238.82	\$ 10,508.08
635-2-12	Pull & Splice Box, F&I, 24"X36" Cover Size	EA	24		\$ 858.43	\$ 20,602.32
635-2-13	Pull & Splice Box, F&I, 30" X 60" Rectangular or 36" Round Cover Size	EA	44		\$ 1,478.04	\$ 65,033.76
635-3-12	Junction Box, F&I, Mounted	EA	10		\$ 842.56	\$ 8,425.60
639-1-122	Electrical Power Service, F&I, Underground	EA	44		\$ 1,210.61	\$ 53,266.84
639-3-11	Electrical Service Disconnect, F&I, Pole Mount	EA	44		\$ 896.74	\$ 39,456.56
641-2-12	Prestressed Concrete Pole, F&I, Type P-11 Service Pole	EA	44		\$ 737.36	\$ 32,443.84
670-5-112	Traffic Controller Assembly, F&I, NEMA, 2 Preemption Plan	AS	44		\$ 22,500.00	\$ 990,000.00
682-1-11	ITS CCTV Camera, F&I, Dome Enclosure - Pressurized	EA	22		\$ 9,450.00	\$ 207,900.00
684-1-1	Managed Field Ethernet Switch, F&I	EA	44		\$ 2,360.68	\$ 103,869.92
101-1	Mobilization	LS	\$ 128,061.19			
102-1	Maintenance of Traffic	LS	\$ 128,061.19			
677-1-11	Equipment Shelter - Master Hub	EA	\$ 25,000.00			
999-25	Initial Contingency Amount		\$ 284,234.62			
<b>Ring Total:</b>					<b>\$</b>	<b>3,126,580.80</b>





ESCAMBIA/SANTA ROSA COUNTY REGIONAL ATMS MASTERPLAN QUANTITIES - Per Network Ring

PREPARED BY ATKINS

November 23, 2015  
Version 3.0

Ring No. 5/6

Intersections:

- 1 Government St at Baylen St
- 2 Main St at Spring St
- 3 Government St at Spring St
- 4 Main St at E St
- 5 SR-292/Barrancas Ave at Main St
- 6 SR-292/Barrancas Ave at Pace Blvd
- 7 SR-292/Barrancas Ave at Live Oak Ave/Old Corry Field Rd
- 8 SR-292/Barrancas Ave at 2nd St
- 9 SR-292/Barrancas Ave at SR-295/Navy Blvd
- 10 SR-295/Navy Blvd at Sunset Ave
- 11 SR-295/Navy Blvd at Winthrop Ave
- 12 SR-295/Navy Blvd at Walmart Super Center Entrance

- 13 SR-295/Navy Blvd at US-98
- 14 SR-295/Navy Blvd/New Warrington Rd at DeWitt Dr
- 15 SR-295/New Warrington Rd at SR-295/Chief Way
- 16 SR-295/New Warrington Rd at SR-298/Jackson St
- 17 CR-298A/Jackson St at CR-295A/Old Corry Field Rd
- 18 SR-298/Lillian Hwy at SR-173/Blue Angel Pkwy
- 19 SR-298/Lillian Hwy at SR-727/Fairfield Dr
- 20 SR-298/Lillian Hwy at 69th Ave
- 21 SR-298/Lillian Hwy at 65th Ave
- 22 SR-298/Lillian Hwy at 57th Ave
- 23 SR-727/Fairfield Dr at Crow Rd/Jackson St
- 24 SR-727/Fairfield Dr at Patricia Dr

- 25 SR-727/Fairfield Dr at 61st Ave
- 26 US-90/SR-10A/Mobile Hwy at CR-341/Marlane Dr
- 27 US-90/SR-10A/Mobile Hwy at Massachusetts Ave
- 28 US-90/SR-10A/Mobile Hwy at Edison Dr
- 29 US-90/SR-10A/Mobile Hwy at Cherokee Trl
- 30 US-90/SR-10A/Mobile Hwy at SR-295/New Warrington Rd
- 31 US-90/SR-10A/Mobile Hwy at SR-727/Fairfield Dr
- 32 SR-298/Lillian Hwy at SR-295/New Warrington Rd
- 33 SR-727/Fairfield Dr at South Dakota St
- 34 SR-727/Fairfield Dr/SR-295/New Warrington Rd at Ruby Ave
- 35 SR-295/Fairfield Dr at Hollywood Ave
- 36 SR-295/Fairfield Dr at CR-453/W St

- 37 SR-295/Fairfield Dr at SR-292/Pace Blvd
- 38 SR-292/Pace Blvd at Herman St
- 39 SR-295/Fairfield Dr at L St
- 40 SR-292/Barrancas Ave at Government St
- 41 Main St at A St

Existing Under Phase I (not replaced):

- 1 SR-295/Fairfield Dr at Texas St

Wireless Intersections:

- 1 CR-173/Blue Angel Parkway at Muldoon Rd
- 2 Jackson St at 57th Ave
- 3 Jackson St at 65th Ave

Pay Item Number:	Description:	Unit:	Quantity:	Note:	Unit Price:	Total:
630-2-11	Conduit, F&I, Open Trench	LF	20538		\$ 5.33	\$ 109,469.32
630-2-12	Conduit, F&I, Directional Bore	LF	41077		\$ 11.60	\$ 476,489.32
630-2-15	Conduit, F&I, Bridge Mount	LF	6849		\$ 16.54	\$ 113,076.99
633-1-114	Fiber Optic Cable, F&I, Overhead, 144 Fibers	LF	35456		\$ 3.15	\$ 111,686.40
633-1-124	Fiber Optic Cable, F&I, Underground, 144 Fibers	LF	78425		\$ 2.81	\$ 220,374.25
633-2-31	Fiber Optic Connection, Install, Splice	EA	300		\$ 49.53	\$ 14,859.00
633-3-11	Fiber Optic Connection Hardware, F&I, Splice Enclosure	EA	39		\$ 916.75	\$ 35,753.25
633-3-12	Fiber Optic Connection Hardware, F&I, Splice Tray	EA	51		\$ 99.05	\$ 5,051.55
633-3-15	Fiber Optic Connection Hardware, F&I, Preterminated Patch Panel	EA	39		\$ 238.82	\$ 9,313.98
635-2-12	Pull & Splice Box, F&I, 24" X 36" Cover Size	EA	31		\$ 858.43	\$ 26,611.33
635-2-13	Pull & Splice Box, F&I, 30" X 60" Rectangular or 36" Round Cover Size	EA	39		\$ 1,478.04	\$ 57,643.56
635-3-12	Junction Box, F&I, Mounted	EA	3		\$ 842.56	\$ 2,527.68
639-1-122	Electrical Power Service, F&I, Underground	EA	39		\$ 1,210.61	\$ 47,213.79
639-3-11	Electrical Service Disconnect, F&I, Pole Mount	EA	39		\$ 895.74	\$ 34,972.86
641-2-12	Prestressed Concrete Pole, F&I, Type P-II Service Pole	EA	39		\$ 737.36	\$ 28,757.04
670-5-112	Traffic Controller Assembly, F&I, NEMA, 2 Preemption Plan	AS	44		\$ 22,500.00	\$ 990,000.00
675-2-121	ITS Cabinet, F&I, pole mount, 336, 24" W X 36" H X 20" D, w/ sunshields	EA	1		\$ 4,500.00	\$ 4,500.00
682-1-11	ITS CCTV Camera, F&I, Dome Enclosure - Pressurized	EA	22		\$ 9,450.00	\$ 207,900.00
684-1-1	Managed Field Ethernet Switch, F&I	EA	45		\$ 2,360.68	\$ 106,230.60
684-6-1	Wireless Communication Device, F&I, Ethernet Access Point	EA	4		\$ 5,000.00	\$ 20,000.00
101-1	Mobilization	LS	\$ 131,121.55			
102-1	Maintenance of Traffic	LS	\$ 131,121.55			
677-1-11	Equipment Shelter - Master Hub	EA	\$ 25,000.00			
999-25	Contingency Amount Initial		\$ 290,967.40			
<b>Ring Total:</b>					<b>\$</b>	<b>3,200,641.43</b>



ESCAMBIA/SANTA ROSA COUNTY REGIONAL ATMS MASTERPLAN QUANTITIES - Per Network Ring

PREPARED BY ATKINS

November 23, 2015

Version 3.0

Ring No. 7/8

Intersections:

- 1 Fairfield Dr at 12th Ave
- 2 12th Ave at Summit Blvd
- 3 12th Ave at SR-750/Airport Blvd
- 4 12th Ave at College Blvd
- 5 Tippin Ave at Langley Ave
- 6 Langley Ave at SR-289/9th Ave
- 7 Langley Ave at Spanish Trail Rd
- 8 US-90/SR-10A/Scenic Hwy at Langley Ave
- 9 US-90/SR-10A/Scenic Hwy at SR-742/Creighton Rd
- 10 US-90/SR-10A/Scenic Hwy at I-10 EB
- 11 US-90/SR-10A/Scenic Hwy at I-10 WB
- 12 US-90/SR-10A/Scenic Hwy at Lora Point Rd/GE Plant

- 13 US-90/SR-10A/Scenic Hwy at SR-290/Olive Rd
- 14 SR-290/Olive Rd at SR-289/9th Ave
- 15 SR-289/9th Ave at Cordova Mall Entrance
- 16 SR-289/9th Ave at SR-750/Airport Blvd
- 17 SR-289/9th Ave at College Blvd
- 18 SR-289/9th Ave at Underwood Blvd
- 19 SR-289/9th Ave at Tippin Ave
- 20 SR-289/9th Ave at SR-742/Creighton Rd
- 21 SR-289/9th Ave at Keating Rd/Dunmore St
- 22 SR-289/9th Ave at Beau Terra Ln
- 23 SR-742/Creighton Rd at Tippin Ave
- 24 SR-742/Creighton Rd at Walmart Super Center Entrance

- 25 SR-742/Creighton Rd at Keating Rd
- 26 SR-742/Creighton Rd at Spanish Trail Rd
- 27 SR-750/Airport Blvd at Cobble View Dr
- 28 SR-750/Airport Blvd at Low's Entrance
- 29 SR-750/Airport Blvd at College Pkwy
- 30 SR-750/Airport Blvd at Cordova Commons Entrance
- 31 SR-296/Bayou Blvd at Sacred Heart Hospital Entrance

Wireless Intersections:

- 1 Summit Blvd at Spanish Trl
- 2 US-90/SR-10A/Scenic Hwy at Summit Blvd

Existing Under Phase 1 (not replaced):

- 1 US-29/SR-95/Palofa St at SR-295/Fairfield
- 2 SR-295/Fairfield Dr at I-110
- 3 SR-295/Fairfield Dr at SR-291/Davis Hwy
- 4 SR-291/Davis Hwy at I-110
- 5 SR-295/Fairfield Dr at SR-289/9th Ave
- 6 SR-296/Brent Ln at Pensacola Christian College
- 7 SR-296/Brent Ln at Rawson Ln
- 8 SR-296/Brent Ln at I-110 SB
- 9 SR-296/Brent Ln at I-110 NB
- 10 SR-296/Brent Ln at SR-291/Davis Hwy
- 11 SR-289/9th Ave at SR-296/Bayou Blvd
- 12 SR-296/Bayou Blvd at Mall Entrance Rd
- 13 SR-296/Bayou Blvd at 12th Ave

Pay Item Number:	Description:	Unit:	Quantity:	Note:	Unit Price:	Total:
630-2-11	Conduit, F&I, Open Trench	LF	25217		\$ 5.33	\$ 134,407.68
630-2-12	Conduit, F&I, Directional Bore	LF	37826		\$ 11.60	\$ 438,779.28
630-2-15	Conduit, F&I, Bridge Mount	LF	1800		\$ 16.51	\$ 29,718.00
633-1-114	Fiber Optic Cable, F&I, Overhead, 144 Fibers	LF	5637		\$ 3.15	\$ 17,756.55
633-1-124	Fiber Optic Cable, F&I, Underground, 144 Fibers	LF	70293		\$ 2.81	\$ 197,523.33
633-2-31	Fiber Optic Connection, Install, Splice	EA	272		\$ 49.53	\$ 13,472.16
633-3-111	Fiber Optic Connection Hardware, F&I, Splice Enclosure	EA	31		\$ 916.75	\$ 28,419.25
633-3-12	Fiber Optic Connection Hardware, F&I, Splice Tray	EA	44		\$ 99.05	\$ 4,358.20
633-3-15	Fiber Optic Connection Hardware, F&I, Preterminated Patch Panel	EA	31		\$ 238.82	\$ 7,403.42
635-2-12	Pull & Splice Box, F&I, 24"X36" Cover Size	EA	21		\$ 858.43	\$ 18,027.03
635-2-13	Pull & Splice Box, F&I, 30" X 60" Rectangular or 36" Round Cover Size	EA	31		\$ 1,478.04	\$ 45,819.24
635-3-12	Junction Box, F&I, Mounted	EA	4		\$ 842.56	\$ 3,370.24
639-1-122	Electrical Power Service, F&I, Underground	EA	31		\$ 1,210.61	\$ 37,528.91
639-3-11	Electrical Service Disconnect, F&I, Pole Mount	EA	31		\$ 896.74	\$ 27,798.94
641-2-12	Prestressed Concrete Pole, F&I, Type P-II Service Pole	EA	31		\$ 737.36	\$ 22,858.16
670-5-112	Traffic Controller Assembly, F&I, NEMA, 2 Preemption Plan	AS	33		\$ 22,500.00	\$ 742,500.00
676-2-121	ITS Cabinet, F&I, pole mount, 336, 24" W X 36" H X 20" D, w/ sunshields	EA	2		\$ 4,500.00	\$ 9,000.00
682-1-11	ITS CCTV Camera, F&I, Dome Enclosure - Pressurized	EA	16		\$ 9,450.00	\$ 151,200.00
684-1-11	Managed Field Ethernet Switch, F&I	EA	33		\$ 2,360.68	\$ 77,802.44
684-6-1	Wireless Communication Device, F&I, Ethernet Access Point	EA	4		\$ 5,000.00	\$ 20,000.00
101-1	Mobilization	LS	\$ 101,392.14			
102-1	Maintenance of Traffic	LS	\$ 101,392.14			
999-25	Contingency Amount Initial		\$ 223,062.71			
<b>Ring Total:</b>					<b>\$</b>	<b>2,453,689.82</b>



ESCAMBIA/SANTA ROSA COUNTY REGIONAL ATMS MASTERPLAN QUANTITIES - Per Network Ring

PREPARED BY ATKINS

November 23, 2015

Version 3.0

Ring No. 9/10

Intersections:

- 1 US-29/SR-95/Pensacola Blvd at SR-750/Airport Blvd
- 2 US-29/SR-95/Pensacola Blvd at Industrial Blvd
- 3 US-29/SR-95/Pensacola Blvd at Marcus Pointe/Stumpfield Rd
- 4 US-29/SR-95/Pensacola Blvd at CR-453/W St
- 5 US-29/SR-95/Pensacola Blvd at Pinecrest Rd
- 6 US-29/SR-95/Pensacola Blvd at Burgess Rd
- 7 US-29/SR-95/Pensacola Blvd at Diamond Dairy Rd
- 8 Massachusetts Ave at CR-453/W St
- 9 CR-453/W St at SR-296/Beverly Pkwy
- 10 CR-453/W St at SR-750/Airport Blvd
- 11 CR-453/W St at Marcus Pointe Blvd
- 12 SR-296/Beverly Pkwy at Clifton Ave

- 13 SR-296/Michigan Ave at Gulf Manor Rd
- 14 SR-296/Michigan Ave at Chicago Ave
- 15 SR-296/Michigan Ave/Saulfey Field Rd at US-90/SR-10A/Mobile Hwy
- 16 Saulfey Field Rd at Muldoon Rd
- 17 Saulfey Field Rd at CR-173/Blue Angel Pkwy
- 18 US-90/SR-10A/Mobile Hwy at Bellview Ave
- 19 US-90/SR-10A/Mobile Hwy at CR-173/Blue Angel Pkwy
- 20 Marcus Pointe Blvd at Enterprise Dr
- 21 CR-297/Pine Forest Rd at CR-173/Blue Angel Pkwy
- 22 Longleaf Dr at Community Dr
- 23 CR-297/Pine Forest Rd at Fire Department
- 24 CR-297/Pine Forest Rd at Wild Lake Blvd

- 25 CR-297/Pine Forest Rd at I-10 EB
- 26 CR-297/Pine Forest Rd at I-10 WB
- 27 CR-297/Pine Forest Rd at Nine Mile Rd

Existing Under Phase I (not replaced):

- 1 US-29/SR-95/Palofox St at SR-292/Pace Blvd/Massachusetts Ave
- 2 US-29/SR-95/Palofox St at SR-296/Brent Ln

Included within Ongoing Projects (not replaced):

- 1 US-29/SR-95/Pensacola Blvd at Broad St
- 2 US-29/SR-95/Pensacola Blvd at Detroit Blvd
- 3 US-29/SR-95/Pensacola Blvd at Hood Dr
- 4 US-29/SR-95/Pensacola Blvd at US-90A/SR-10/9 Mile Rd EB
- 5 US-29/SR-95/Pensacola Blvd at US-90A/SR-10/9 Mile Rd WB (MHT\*\*)
- 6 US-90/SR-10A/Mobile Hwy at CR-297/Pine Forest Rd
- 7 CR-297/Pine Forest Rd at CR-297A
- 8 Nine Mile Rd at Fowler Ave
- 9 US-90A/Nine Mile Rd at Beulah Rd
- 10 US-90A/Nine Mile Rd at Heritage Oaks Blvd
- 11 US-90A/Nine Mile Rd at I-10 WB

Pay Item Number:	Description:	Unit:	Quantity:	Note:	Unit Price:	Total:
630-2-11	Conduit, F&I, Open Trench	LF	25605		\$ 5.33	\$ 136,471.99
630-2-12	Conduit, F&I, Directional Bore	LF	25605		\$ 11.60	\$ 297,018.00
633-1-114	Fiber Optic Cable, F&I, Overhead, 144 Fibers	LF	18376		\$ 3.15	\$ 57,884.40
633-1-124	Fiber Optic Cable, F&I, Underground, 144 Fibers	LF	65279.5		\$ 2.81	\$ 183,435.40
633-2-31	Fiber Optic Connection, Install, Splice	EA	396		\$ 49.53	\$ 19,613.88
633-3-11	Fiber Optic Connection Hardware, F&I, Splice Enclosure	EA	27		\$ 916.75	\$ 24,752.25
633-3-12	Fiber Optic Connection Hardware, F&I, Splice Tray	EA	51		\$ 99.05	\$ 5,051.55
633-3-15	Fiber Optic Connection Hardware, F&I, Preterminated Patch Panel	EA	28		\$ 238.82	\$ 6,686.96
635-2-12	Pull & Splice Box, F&I, 24"X36" Cover Size	EA	38		\$ 858.43	\$ 32,620.34
635-2-13	Pull & Splice Box, F&I, 30" X 60" Rectangular or 36" Round Cover Size	EA	27		\$ 1,478.04	\$ 39,977.08
639-1-122	Electrical Power Service, F&I, Underground	EA	27		\$ 1,210.61	\$ 32,686.47
639-3-11	Electrical Service Disconnect, F&I, Pole Mount	EA	27		\$ 896.74	\$ 24,111.98
681-2-12	Prestressed Concrete Pole, F&I, Type P-II Service Pole	EA	27		\$ 737.36	\$ 19,908.72
670-5-112	Traffic Controller Assembly, F&I, NEMA, 2' Preemption Plan	AS	27		\$ 23,500.00	\$ 637,500.00
682-1-11	ITS CCTV Camera, F&I, Dome Enclosure - Pressurized	EA	14		\$ 9,450.00	\$ 132,300.00
684-1-1	Managed Field Ethernet Switch, F&I	EA	27		\$ 2,360.68	\$ 63,738.36
101-1	Mobilization	LS	\$ 84,189.37			
102-1	Maintenance of Traffic	LS	\$ 84,189.37			
677-1-11	Equipment Shelter - Master Hub (x2)	EA	\$ 50,000.00			
999-25	Contingency Amount Initial		\$ 190,216.61			
<b>Ring Total:</b>					<b>\$</b>	<b>2,092,382.72</b>



ESCAMBIA/SANTA ROSA COUNTY REGIONAL ATMS MASTERPLAN QUANTITIES - Per Network Ring

PREPARED BY ATKINS

November 23, 2015  
Version 3.0

Ring No. 11/12

Intersections:

- 1 SR-291/Davis Hwy at Langley Ave
- 2 SR-291/Davis Hwy at Burgess Rd
- 3 SR-291/Davis Hwy at SR-742/Creighton Rd
- 4 SR-291/Davis Hwy at Bloodworth Ln
- 5 SR-291/Davis Hwy at I-10 EB
- 6 SR-291/Davis Hwy at I-10 WB
- 7 SR-291/Davis Hwy at Northcross Ln
- 8 SR-291/Davis Hwy at SR-290/Olive Rd
- 9 SR-291/Davis Hwy at University Pkwy
- 10 SR-291/Davis Hwy at Klingner St
- 11 SR-291/Davis Hwy at Johnson Ave
- 12 SR-291/Davis Hwy at Copter Ave

- 13 SR-750/Airport Blvd at Hancock Ln
- 14 SR-750/Airport Blvd at I-110 SB
- 15 SR-750/Airport Blvd at I-110 NB
- 16 SR-742/Creighton Rd at Hillburn Rd
- 17 SR-742/Creighton Rd at Plantation Rd
- 18 SR-290/Olive Rd at Cody Ln
- 19 SR-290/Olive Rd at Whitmire Rd
- 20 CR-95A/Palafax St at SR-750/Airport Blvd
- 21 CR-95A/Palafax St at Hancock Ln
- 22 CR-95A/Palafax St at SR-742/Burgess Rd
- 23 CR-95A/Palafax St at SR-290/Olive Rd
- 24 CR-95A/Palafax St at Johnson Ave

- 25 CR-95A/Palafax St at Ensley St
- 26 CR-95A/Palafax St at Hood Dr
- 27 US-90A/SR-10/9 Mile Rd at CR-95A/Palafax St
- 28 US-90A/SR-10/9 Mile Rd at Hillsberry Rd
- 29 US-90A/SR-10/9 Mile Rd at CR-292/Chesterstrand Rd
- 30 US-90A/SR-10/9 Mile Rd at Humming Bird Blvd
- 31 US-90A/SR-10/9 Mile Rd at Gully Ln
- 32 US-90A/SR-10/9 Mile Rd at Plainfield Ave
- 33 US-90A/SR-10/9 Mile Rd at University Pkwy
- 34 US-90/SR-10/9 Mile Rd at CR-498/Copter Rd
- 35 US-90A/SR-10/N Davis Hwy at Campus Dr/Rockwood Rd
- 36 US-90A/SR-10/N Davis Hwy at US-90/SR-10A/Scenic Hwy

- 37 University Pkwy at Johnson Ave
- 38 University Pkwy at University Town Center
- 39 University Pkwy at Hillview St
- 40 University Pkwy at Campus Dr
- 41 Campus Dr at Campus Ln (1)
- 42 Campus Dr at Campus Ln (2)
- 43 SR-291/Davis Hwy at SR-750/Airport Blvd
- 44 US-90A/Nine Mile Rd at Jernigan Rd/Sunnehanna Blvd

Pay Item Number:

Description:

Unit: Quantity: Note:

Unit Price: Total:

630-2-11	Conduit, F&I, Open Trench	LF	30166		\$	5.33	\$	160,784.78
630-2-12	Conduit, F&I, Directional Bore	LF	30166		\$	11.60	\$	349,925.60
630-2-15	Conduit, F&I, Bridge Mount	LF	2358		\$	16.51	\$	38,930.58
633-1-114	Fiber Optic Cable, F&I, Overhead, 144 Fibers	LF	4890		\$	3.15	\$	15,403.50
633-1-124	Fiber Optic Cable, F&I, Underground, 144 Fibers	LF	93075		\$	2.81	\$	261,540.75
633-2-31	Fiber Optic Connection, Install, Splice	EA	608		\$	49.53	\$	30,114.24
633-3-11	Fiber Optic Connection Hardware, F&I, Splice Enclosure	EA	44		\$	916.75	\$	40,337.00
633-3-12	Fiber Optic Connection Hardware, F&I, Splice Tray	EA	80		\$	99.05	\$	7,924.00
633-3-15	Fiber Optic Connection Hardware, F&I, Preterminated Patch Panel	EA	44		\$	238.82	\$	10,508.08
635-2-12	Pull & Splice Box, F&I, 24"X36" Cover Size	EA	20		\$	858.43	\$	17,168.60
635-2-13	Pull & Splice Box, F&I, 30" X 60" Rectangular or 36" Round Cover Size	EA	44		\$	1,479.04	\$	65,033.76
635-3-12	Junction Box, F&I, Mounted	EA	6		\$	842.56	\$	5,055.36
639-1-122	Electrical Power Service, F&I, Underground	EA	44		\$	1,210.61	\$	53,266.84
639-3-11	Electrical Service Disconnect, F&I, Pole Mount	EA	44		\$	896.74	\$	39,456.56
641-2-12	Prestressed Concrete Pole, F&I, Type P-11 Service Pole	EA	44		\$	737.36	\$	32,443.84
670-5-112	Traffic Controller Assembly, F&I, NEMA, 2 Preemption Plan	AS	44		\$	22,500.00	\$	990,000.00
682-1-11	ITS CCTV Camera, F&I, Dome Enclosure - Pressurized	EA	22		\$	9,450.00	\$	207,900.00
684-1-1	Managed Field Ethernet Switch, F&I	EA	44		\$	2,360.68	\$	103,869.92
684-6-1	Wireless Communication Device, F&I, Ethernet Access Point	EA	1		\$	5,000.00	\$	5,000.00
101-1	Mobilization	LS	121,733.17					
102-1	Maintenance of Traffic	LS	121,733.17					
999-25	Contingency Amount Initial		267,812.98					
<b>Ring Total:</b>								<b>\$ 2,945,942.73</b>



ESCAMBIA/SANTA ROSA COUNTY REGIONAL ATMS MASTERPLAN QUANTITIES - Per Network Ring

PREPARED BY ATKINS

November 23, 2015

Version 3.0

Ring No. 13/14

Intersections:

- 1 US-98/SR-30 at SR-727/Fairfield Dr
- 2 US-98/SR-30 at 72nd Ave
- 3 US-98/SR-30 at 61st Ave
- 4 US-98/SR-30 at Naval Hospital Pensacola
- 5 US-98/SR-30 at Veterans Way
- 6 US-98/SR-30 at Navy Exchange Rd

Wireless Intersections:

- 1 CR-173/Bauer Rd at SW Escambia Co. Sports Complex
- 2 CR-297/Dogtrack Rd at CR-173/Blue Angel Parkway
- 3 CR-173/Blue Angel Parkway at SR-292A/Gulf Beach Hwy
- 4 SR-292/Sorrento Rd at CR-292A/Gulf Beach Hwy
- 5 US-98/SR-30 at SR-173/Blue Angel Pkwy
- 6 US-98/SR-30 at SR-298/Lillian Hwy/CR-297/Dog Track Rd
- 7 US-98/SR-30/Lillian Hwy at CR-173/Bauer Rd
- 8 SR-292/Gulf Beach Hwy at SR-727/Fairfield Dr
- 9 SR-292/Sorrento Rd at SR-292A/Gulf Beach Hwy
- 10 SR-292/Sorrento Rd at SR-173/Blue Angel Pkwy
- 11 SR-292/Sorrento Rd at CR-173/Bauer Rd

Pay Item Number:	Description:	Unit:	Quantity:	Note:	Unit Price:	Total:
630-2-11	Conduit, F&I, Open Trench	LF	8261		\$ 5.33	\$ 44,028.47
630-2-12	Conduit, F&I, Directional Bore	LF	8261		\$ 11.00	\$ 90,821.80
633-1-124	Fiber Optic Cable, F&I, Underground, 144 Fibers	LF	17921		\$ 2.81	\$ 50,358.01
633-2-31	Fiber Optic Connection, Install, Splice	EA	168		\$ 49.53	\$ 8,321.04
633-3-11	Fiber Optic Connection Hardware, F&I, Splice Enclosure	EA	6		\$ 916.75	\$ 5,500.50
633-3-12	Fiber Optic Connection Hardware, F&I, Splice Tray	EA	18		\$ 99.05	\$ 1,782.90
633-3-15	Fiber Optic Connection Hardware, F&I, Preterminated Patch Panel	EA	6		\$ 238.82	\$ 1,432.92
635-2-12	Pull & Splice Box, F&I, 24"X36" Cover Size	EA	4		\$ 858.43	\$ 3,433.72
635-2-13	Pull & Splice Box, F&I, 30" X 60" Rectangular or 36" Round Cover Size	EA	6		\$ 1,478.04	\$ 8,868.24
639-1-122	Electrical Power Service, F&I, Underground	EA	17		\$ 1,210.61	\$ 20,580.37
639-3-11	Electrical Service Disconnect, F&I, Pole Mount	EA	17		\$ 896.74	\$ 15,244.58
641-2-12	Prestressed Concrete Pole, F&I, Type P-II Service Pole	EA	17		\$ 737.36	\$ 12,535.12
670-5-112	Traffic Controller Assembly, F&I, NEMA, 2 Preemption Plan	AS	17		\$ 22,500.00	\$ 382,500.00
676-2-121	ITS Cabinet, F&I, pole mount, 336, 24" W X 36" H X 20" D, w/ sunshields	EA	1		\$ 4,500.00	\$ 4,500.00
682-1-11	ITS CCTV Camera, F&I, Dome Enclosure - Pressurized	EA	8		\$ 9,450.00	\$ 75,600.00
684-1-1	Managed Field Ethernet Switch, F&I	EA	18		\$ 2,360.68	\$ 42,492.24
684-6-1	Wireless Communication Device, F&I, Ethernet Access Point	EA	17		\$ 5,000.00	\$ 85,000.00
101-1	Mobilization	LS	\$ 42,900.00			
102-1	Maintenance of Traffic	LS	\$ 42,900.00			
999-25	Initial Contingency Amount	\$	\$ 94,379.99			
<b>Ring Total:</b>					<b>\$</b>	<b>1,038,179.89</b>



ESCAMBIA/SANTA ROSA COUNTY REGIONAL ATMS MASTERPLAN QUANTITIES - Per Network Ring

PREPARED BY ATKINS

November 23, 2015

Version 3.0

Ring No. 15/16

Intersections:

- 1 US-29/SR-95/Pensacola Blvd at 10 Mile Rd
- 2 US-29/SR-95/Pensacola Blvd at Roberts Rd
- 3 US-29/SR-95/Pensacola Blvd at CR-186/Kingsfield Rd
- 4 US-29/SR-95/Pensacola Blvd at Tate School Rd
- 5 US-29/SR-95/Pensacola Blvd at CR-749/Old Chemstrand Rd
- 6 US-29/SR-95/Pensacola Blvd at Tree St/International Paper
- 7 US-29/SR-95/Pensacola Blvd at CR-184/Muscogee Rd
- 8 US-29/SR-95/Pensacola Blvd at CR-95A/Morris Ave
- 9 Ten Mile Rd at CR-95A/Palafax St
- 10 Ten Mile Rd at Ashton Brooksham Dr
- 11 Ten Mile Rd at CR-749/Chemstrand Rd
- 12 CR-186/Kingsfield Rd at CR-95A/Palafax St

- 13 US-29/SR-95/Pensacola Blvd at 9 & Half Mile Rd

Wireless Intersections:

- 1 CR-186/Kingsfield Rd at CR-749/Chemstrand Rd

Pay Item Number:	Description:	Unit:	Quantity:	Note:	Unit Price:	Total:
630-2-11	Conduit, F&I, Open Trench	LF	14380		\$ 5.33	\$ 76,642.74
630-2-12	Conduit, F&I, Directional Bore	LF	14380		\$ 11.60	\$ 166,802.20
633-1-124	Fiber Optic Cable, F&I, Underground, 144 Fibers	LF	31859		\$ 2.81	\$ 89,523.79
633-2-31	Fiber Optic Connection, Install, Splice	EA	340		\$ 49.53	\$ 16,840.20
633-3-11	Fiber Optic Connection Hardware, F&I, Splice Enclosure	EA	13		\$ 916.75	\$ 11,917.75
633-3-12	Fiber Optic Connection Hardware, F&I, Splice Tray	EA	37		\$ 95.05	\$ 3,664.85
633-3-15	Fiber Optic Connection Hardware, F&I, Preterminated Patch Panel	EA	13		\$ 238.82	\$ 3,104.66
635-2-12	Pull & Splice Box, F&I, 24"X36" Cover Size	EA	10		\$ 858.43	\$ 8,584.30
635-2-13	Pull & Splice Box, F&I, 30" X 60" Rectangular or 36" Round Cover Size	EA	13		\$ 1,478.04	\$ 19,214.52
639-1-122	Electrical Power Service, F&I, Underground	EA	13		\$ 1,210.61	\$ 15,737.93
639-3-11	Electrical Service Disconnect, F&I, Pole Mount	EA	13		\$ 896.74	\$ 11,657.62
641-2-12	Prestressed Concrete Pole, F&I, Type P-II Service Pole	EA	13		\$ 737.36	\$ 9,585.68
670-5-112	Traffic Controller Assembly, F&I, NEMA, 2-Preemption Plan	AS	14		\$ 22,500.00	\$ 315,000.00
670-2-121	ITS Cabinet, F&I, pole mount, 336, 24" W X 36" H X 20" D, w/ sunshields	EA	6		\$ 4,500.00	\$ 27,000.00
682-1-11	ITS CCTV Camera, F&I, Dome Enclosure - Pressurized	EA	7		\$ 9,450.00	\$ 66,150.00
684-1-11	Managed Field Ethernet Switch, F&I	EA	20		\$ 2,360.68	\$ 47,213.60
684-6-1	Wireless Communication Device, F&I, Ethernet Access Point	EA	3		\$ 5,000.00	\$ 15,000.00
101-1	Mobilization	LS	\$ 45,181.99			
102-1	Maintenance of Traffic	LS	\$ 90,363.98			
677-1-11	Equipment Shelter - Master Hub	EA	\$ 25,000.00			
999-25	Contingency Amount Initial		\$ 106,418.58			
<b>Ring Total:</b>					<b>\$</b>	<b>1,170,604.39</b>



ESCAMBIA/SANTA ROSA COUNTY REGIONAL ATMS MASTERPLAN QUANTITIES - Per Network Ring

PREPARED BY ATKINS

November 23, 2015  
Version 3.0

Ring No. 17/18

Intersections:

- 1 US-90/SR-10 at CR-197A/Woodbine Rd
- 2 US-90/SR-10 at CR-197/Chumucka Hwy
- 3 US-90/SR-10 at CR-197B/Spencer Field Rd
- 4 US-90/SR-10 at Spencer Field Rd
- 5 US-90/SR-10 at Watkins Rd
- 6 US-90/SR-10/Caroline St at Spears St
- 7 US-90/SR-10/Caroline St at Cardinal St
- 8 US-90/SR-10/Caroline St at CR-197A/School Ln
- 9 US-90/SR-10/Caroline St at SR-281/Avalon Blvd (\*\*MH)
- 10 SR-281/Avalon Blvd at Carroll Rd
- 11 SR-281/Avalon Blvd at CR-191A/Mulat Rd/Commerce Rd
- 12 SR-281/Avalon Blvd at CR-281B/Cynamid Rd/Pebble Ridge Dr

Wireless Intersections:

- 1 SR-281/Avalon Blvd at I-10 EB

Pay Item Number:	Description:	Unit:	Quantity:	Note:	Unit Price:	Total:
630-2-11	Conduit, F&I, Open Trench	LF	22480		\$ 5.33	\$ 119,818.40
630-2-12	Conduit, F&I, Directional Bore	LF	22480		\$ 11.60	\$ 260,768.00
633-1-124	Fiber Optic Cable, F&I, Underground, 144 Fibers	LF	48210		\$ 2.81	\$ 135,470.10
633-2-31	Fiber Optic Connection, Install, Splice	EA	192		\$ 49.53	\$ 9,509.76
633-3-11	Fiber Optic Connection Hardware, F&I, Splice Enclosure	EA	12		\$ 916.75	\$ 11,001.00
633-3-12	Fiber Optic Connection Hardware, F&I, Splice Tray	EA	24		\$ 99.05	\$ 2,377.20
633-3-15	Fiber Optic Connection Hardware, F&I, Preterminated Patch Panel	EA	12		\$ 238.82	\$ 2,865.84
635-2-12	Pull & Splice Box, F&I, 24"X36" Cover Size	EA	17		\$ 858.43	\$ 14,593.31
635-2-13	Pull & Splice Box, F&I, 30" X 60" Rectangular or 36" Round Cover Size	EA	12		\$ 1,478.04	\$ 17,736.48
639-1-122	Electrical Power Service, F&I, Underground	EA	12		\$ 1,210.61	\$ 14,527.32
639-3-11	Electrical Service Disconnect, F&I, Pole Mount	EA	12		\$ 896.74	\$ 10,760.88
641-2-12	Prestressed Concrete Pole, F&I, Type P-II Service Pole	EA	12		\$ 737.36	\$ 8,848.32
670-5-112	Traffic Controller Assembly, F&I, NEMA, 2 Preemption Plan	AS	13		\$ 22,500.00	\$ 292,500.00
676-2-121	ITS Cabinet, F&I, pole mount, 336, 24" W X 36" H X 20" D, w/ sunshields	EA	1		\$ 4,500.00	\$ 4,500.00
682-1-11	ITS CCTV Camera, F&I, Dome Enclosure - Pressurized	EA	7		\$ 9,450.00	\$ 66,150.00
684-1-1	Managed Field Ethernet Switch, F&I	EA	14		\$ 2,360.68	\$ 33,049.52
684-6-1	Wireless Communication Device, F&I, Ethernet Access Point	EA	2		\$ 5,000.00	\$ 10,000.00
101-1	Mobilization	LS	\$ 50,723.81			
102-1	Maintenance of Traffic	LS	\$ 50,723.81			
677-1-11	Equipment Shelter - Master Hub	EA	\$ 25,000.00			
999-25	Initial Contingency Amount	\$	114,092.37			
<b>Ring Total:</b>					<b>\$</b>	<b>1,255,016.12</b>



ESCAMBIA/SANTA ROSA COUNTY REGIONAL ATMS MASTERPLAN QUANTITIES - Per Network Ring

PREPARED BY ATKINS

November 23, 2015  
Version 3.0

Ring No. 19/20

Intersections:

- 1 US-90/SR-10/Caroline St at Kmart Entrance
- 2 US-90/SR-10/Caroline St at Parkmore Plaza Dr
- 3 US-90/SR-10/Caroline St at Glover Ln
- 4 US-90/SR-10/Caroline St at Santa Rosa County Tax Collector
- 5 US-90/SR-10/Caroline St at SR-89/Dogwood Dr
- 6 US-90/SR-10/Caroline St at SR-87/Stewart St
- 7 US-90/SR-10/Caroline St at CR-191/Canal St
- 8 US-90/SR-10/Caroline St at Elmira St
- 9 US-90/SR-10/Caroline St at Willing St
- 10 US-90/SR-10/Caroline St at SR-89/Ward Basin Rd
- 11 SR-89/Dogwood Dr at Hamilton Bridge Rd
- 12 SR-89/Dogwood Dr at CR-184A/Berryhill Rd

- 13 SR-89/Dogwood Dr at Park Ave
- 14 SR-89/Dogwood Dr at CR-191/Willard Norris Rd/Magnolia St
- 15 SR-89/Dogwood Dr at SR-87/Stewart St
- 16 CR-197/Chumuckla Hwy at CR-197B/Norris Rd
- 17 CR-197B/Norris Rd at Spencer Field Rd
- 18 SR-87/Stewart St at CR-184A/Berryhill Rd
- 19 SR-87/Stewart St at Park Ave
- 20 CR-87A/Alabama St at CR-191/Munson Hwy

Wireless Intersections:

- 1 US-90/SR-10/Caroline St at SR-87
- 2 SR-87/Stewart St at Nichols Lake Rd
- 3 CR-184A/Berryhill Rd at CR-197/Chumuckla Hwy
- 4 CR-197/Chumuckla Hwy at CR-184/Quinnette
- 5 CR-184A/Berryhill Rd at Spencer Field Rd
- 6 CR-184A/Berryhill Rd at Berryhill Elementary School
- 7 CR-184A/Berryhill Rd at Anderson Ln
- 8 CR-184A/Berryhill Rd at Northrop Rd

Pay Item Number:	Description:	Unit:	Quantity:	Note:	Unit Price:	Total:
630-2-11	Conduit, F&I, Open Trench	LF	28928		\$ 5.33	\$ 154,186.24
630-2-12	Conduit, F&I, Directional Bore	LF	28928		\$ 11.00	\$ 318,208.00
630-2-15	Conduit, F&I, Bridge Mount	LF	2628		\$ 16.51	\$ 43,388.28
633-1-124	Fiber Optic Cable, F&I, Underground, 144 Fibers	LF	63906		\$ 2.81	\$ 179,575.86
633-2-31	Fiber Optic Connection, Install, Splice	EA	392		\$ 49.53	\$ 19,415.76
633-3-11	Fiber Optic Connection Hardware, F&I, Splice Enclosure	EA	26		\$ 916.75	\$ 23,835.50
633-3-12	Fiber Optic Connection Hardware, F&I, Splice Tray	EA	50		\$ 95.05	\$ 4,752.50
633-3-15	Fiber Optic Connection Hardware, F&I, Preterminated Patch Panel	EA	26		\$ 238.82	\$ 6,209.32
635-2-12	Pull & Splice Box, F&I, 24"X36" Cover Size	EA	17		\$ 858.43	\$ 14,593.31
635-2-13	Pull & Splice Box, F&I, 30" X 60" Rectangular or 36" Round Cover Size	EA	26		\$ 1,478.04	\$ 38,429.04
635-3-12	Junction Box, F&I, Mounted	EA	4		\$ 942.56	\$ 3,770.24
639-1-122	Electrical Power Service, F&I, Underground	EA	28		\$ 1,210.61	\$ 33,897.08
639-3-11	Electrical Service Disconnect, F&I, Pole Mount	EA	28		\$ 896.74	\$ 25,108.72
641-2-12	Prestressed Concrete Pole, F&I, Type P-II Service Pole	EA	28		\$ 737.36	\$ 20,646.08
670-5-112	Traffic Controller Assembly, F&I, NEMA, 2 Preemption Plan	AS	28		\$ 22,500.00	\$ 630,000.00
676-2-121	ITS Cabinet, F&I, pole mount, 336, 24" W X 36" H X 20" D, w/ sunshields	EA	4		\$ 4,500.00	\$ 18,000.00
682-1-11	ITS CCTV Camera, F&I, Dome Enclosure - Pressurized	EA	14		\$ 9,450.00	\$ 132,300.00
684-1-1	Managed Field Ethernet Switch, F&I	EA	32		\$ 2,360.68	\$ 75,541.76
684-6-1	Wireless Communication Device, F&I, Ethernet Access Point	EA	12		\$ 5,000.00	\$ 60,000.00
101-1	Mobilization	LS	\$ 90,950.72			
102-1	Maintenance of Traffic	LS	\$ 90,950.72			
999-25	Initial Contingency Amount		\$ 200,091.59			
<b>Ring Total:</b>					<b>\$</b>	<b>2,201,007.53</b>





ESCAMBIA/SANTA ROSA COUNTY REGIONAL ATMS MASTERPLAN QUANTITIES - Per Network Ring

PREPARED BY ATKINS

November 23, 2015  
Version 3.0

Ring No. 21/22

Intersections:

- |  |   |   |
|--|---|---|
| 1 US-98/SR-30/Gulf Breeze Pkwy at Northcliff Dr                | 13 US-98/SR-30/Gulf Breeze Pkwy at Tiger Point Blvd           | 25 US-98/SR-30/Navarre Pkwy at Wal-Mart Supercenter |
| 2 US-98/SR-30/Gulf Breeze Pkwy at Gulf Breeze Elementary       | 14 US-98/SR-30/Gulf Breeze Pkwy at CR-191C/Nantahala Beach Rd | 26 US-98/SR-30/Navarre Pkwy at Whisper Pines Blvd   |
| 3 US-98/SR-30/Gulf Breeze Pkwy at Daniel St                    | 15 US-98/SR-30/Gulf Breeze Pkwy at Edgewood Dr                | 27 US-98/SR-30/Navarre Pkwy at Orion Parker Dr      |
| 4 Daniel St at Shoreline Dr                                    | 16 US-98/SR-30/Navarre Pkwy at Sunrise Dr                     | 28 SR-87/Stewart Rd at Lando St                     |
| 5 US-98/SR-30/Gulf Breeze Pkwy at Baptist Gulf Breeze Hospital | 17 US-98/SR-30/Navarre Pkwy at Cord St                        | 29 SR-87/Stewart Rd at High School Blvd             |
| 6 US-98/SR-30/Gulf Breeze Pkwy at Gondolier Blvd/Kelton Blvd   | 18 US-98/SR-30/Navarre Pkwy at Navarre School Rd              | 30 SR-87 at CR-399/E Bay Blvd/Turkey Bluff Rd       |
| 7 US-98/SR-30/Gulf Breeze Pkwy at Whisper Bay Blvd             | 19 US-98/SR-30/Navarre Pkwy at Andorra St                     |   |
| 8 US-98/SR-30/Gulf Breeze Pkwy at CR-191A/Orlando Beach Rd     | 20 US-98/SR-30/Navarre Pkwy at SR-87                          |   |
| 9 US-98/SR-30/Gulf Breeze Pkwy at CR-399/College Pkwy          | 21 US-98/SR-30/Navarre Pkwy at CR-399/Navarre Beach Causeway  |   |
| 10 US-98/SR-30/Gulf Breeze Pkwy at Green Briar Pkwy            | 22 US-98/SR-30/Navarre Pkwy at Pullam St                      |   |
| 11 US-98/SR-30/Gulf Breeze Pkwy at SR-281/Garcon Point Rd      | 23 US-98/SR-30/Navarre Pkwy at Winn-Dixie                     |   |
| 12 US-98/SR-30/Gulf Breeze Pkwy at Portside Dr                 | 24 US-98/SR-30/Navarre Pkwy at Panhandle Trl                  |   |

Wireless Intersections:

- 1 SR-399/Pensacola Beach Blvd at Via De Luna Dr/Fort Pickens Rd

Pay Item Number:	Description:	Unit:	Quantity:	Note:	Unit Price:	Total:
630-2-11	Conduit, F&I, Open Trench	LF	65608		\$ 5.33	\$ 349,687.98
630-2-12	Conduit, F&I, Directional Bore	LF	65608		\$ 11.00	\$ 721,687.00
633-1-124	Fiber Optic Cable, F&I, Underground, 144 Fibers	LF	139365		\$ 2.81	\$ 391,615.65
633-2-31	Fiber Optic Connection, Install, Splice	EA	264		\$ 49.53	\$ 13,075.92
633-3-11	Fiber Optic Connection Hardware, F&I, Splice Enclosure	EA	30		\$ 916.75	\$ 27,502.50
633-3-12	Fiber Optic Connection Hardware, F&I, Splice Tray	EA	42		\$ 99.05	\$ 4,160.10
633-3-15	Fiber Optic Connection Hardware, F&I, Preterminated Patch Panel	EA	30		\$ 238.82	\$ 7,164.60
635-2-12	Pull & Splice Box, F&I, 24"X36" Cover Size	EA	43		\$ 858.43	\$ 36,912.49
635-2-13	Pull & Splice Box, F&I, 30" X 60" Rectangular or 36" Round Cover Size	EA	30		\$ 1,478.04	\$ 44,341.20
639-1-122	Electrical Power Service, F&I, Underground	EA	31		\$ 1,210.61	\$ 37,528.91
639-3-11	Electrical Service Disconnect, F&I, Pole Mount	EA	31		\$ 895.74	\$ 27,798.94
641-2-12	Prestressed Concrete Pole, F&I, Type P-II Service Pole	EA	31		\$ 737.36	\$ 22,858.16
670-5-112	Traffic Controller Assembly, F&I, NEMA, 2 Preemption Plan	AS	31		\$ 22,500.00	\$ 697,500.00
676-2-121	ITS Cabinet, F&I, pole mount, 336, 24" W X 36" H X 20" D, w/ sunshields	EA	1		\$ 4,500.00	\$ 4,500.00
682-1-11	ITS CCTV Camera, F&I, Dome Enclosure - Pressurized	EA	15		\$ 9,450.00	\$ 141,750.00
684-1-1	Managed Field Ethernet Switch, F&I	EA	32		\$ 2,360.68	\$ 75,541.76
684-6-1	Wireless Communication Device, F&I, Ethernet Access Point	EA	1		\$ 5,000.00	\$ 5,000.00
101-1	Mobilization	LS	\$ 132,399.26			
102-1	Maintenance of Traffic	LS	\$ 132,399.26			
677-1-11	Equipment Shelter - Master Hub	EA	\$ 25,000.00			
999-25	Initial Contingency Amount		\$ 293,778.37			
<b>Ring Total:</b>					<b>\$</b>	<b>3,231,562.10</b>



ESCAMBIA/SANTA ROSA COUNTY REGIONAL ATMS MASTERPLAN QUANTITIES - Per Network Ring

PREPARED BY ATKINS

November 23, 2015  
Version 3.0

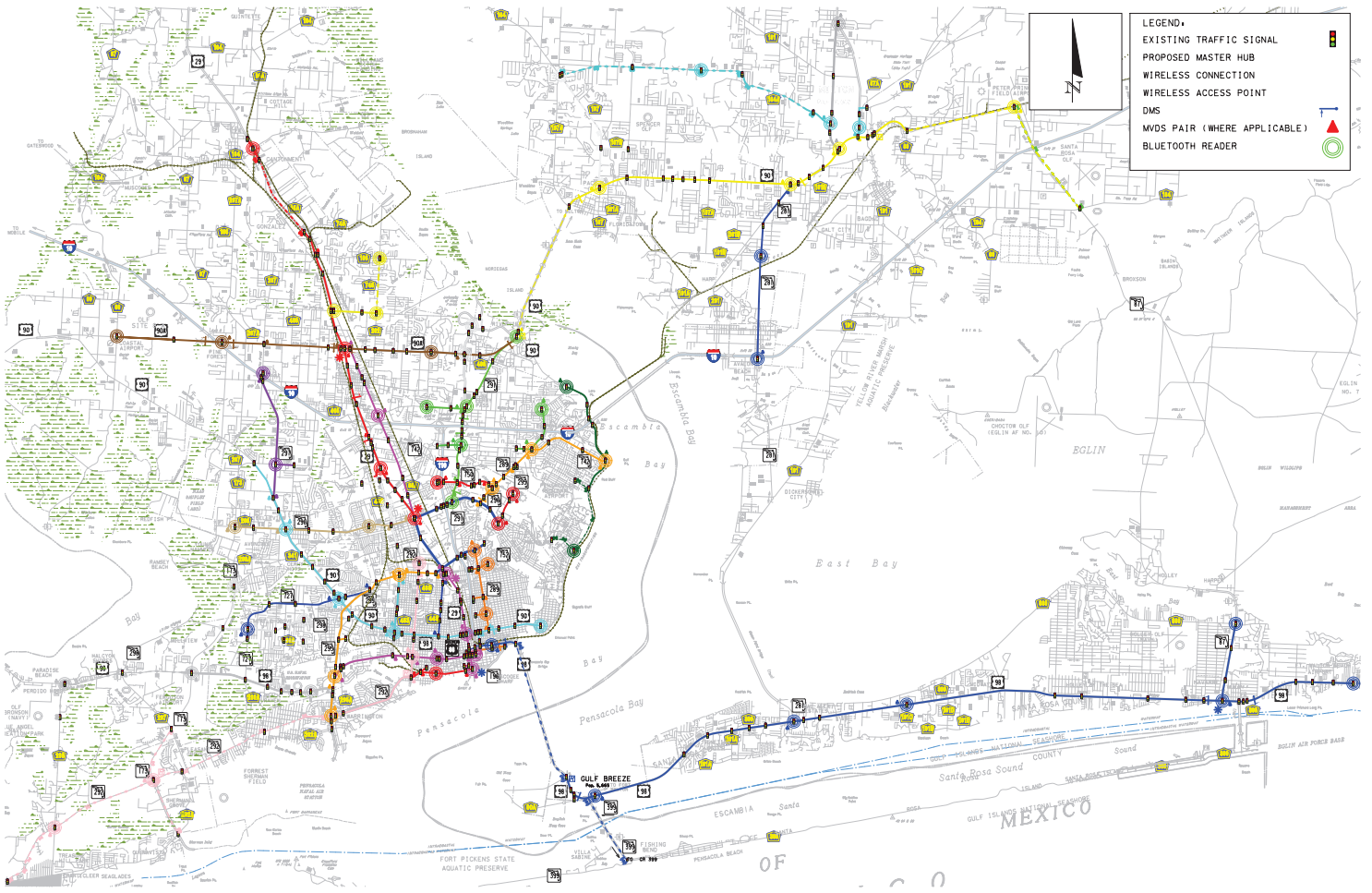
Additional Devices Regionwide

Remote Intersections:

- 1 Bratt Rd at Bryneville Rd
- 2 SR-4 at Commerce St

670-5-112	Traffic Controller Assembly, F&I, NEMA, 2 Preemption Plan	AS	0	\$	22,500.00	\$	-
633-2-31	Fiber Optic Connection, Install, Splice	EA	0	\$	49.53	\$	-
633-3-11	Fiber Optic Connection Hardware, F&I, Splice Enclosure	EA	0	\$	916.75	\$	-
633-3-12	Fiber Optic Connection Hardware, F&I, Splice Tray	EA	0	\$	99.05	\$	-
633-3-15	Fiber Optic Connection Hardware, F&I, Preterminated Patch Panel	EA	0	\$	238.82	\$	-
635-2-13	Pull & Splice Box, F&I, 30" X 60" Rectangular or 36" Round Cover Size	EA	0	\$	1,478.04	\$	-
639-1-122	Electrical Power Service, F&I, Underground	EA	0	\$	1,210.61	\$	-
639-3-11	Electrical Service Disconnect, F&I, Pole Mount	EA	0	\$	896.74	\$	-
641-2-14	Prestressed Concrete Pole, F&I, Type P-IV	EA	0	\$	1,061.19	\$	-
660-3-11	Vehicle Detection System, Microwave, Cabinet Equipment	EA	0	\$	1,800.00	\$	-
660-3-12	Vehicle Detection System, Microwave, Above Ground Equipment	EA	0	\$	3,500.00	\$	-
660-6-121	Vehicle Detection System - Bluetooth Cabinet Equipment	EA	10	\$	500.00	\$	5,000.00
660-6-122	Vehicle Detection System - Bluetooth Above Ground Equipment	EA	10	\$	3,000.00	\$	30,000.00
676-2-111	ITS Cabinet, Pole Mount, 336	AS	0	\$	7,600.00	\$	-
700-8-135	Arterial Dynamic Message Sign, F&I, with UPS, Full Color, 51-100 SF	EA	2	\$	65,000.00	\$	130,000.00
700-10-122	Dynamic Message Support Structure	EA	2	\$	60,000.00	\$	120,000.00
781-3-111	ITS Road Weather Information System	EA	0	\$	50,000.00	\$	-
101-1	Mobilization	LS	\$	28,500.00			
102-1	Maintenance of Traffic	LS	\$	28,500.00			
999-25	Initial Contingency Amount		\$	34,200.00			

				<b>Additional Devices Total</b>	\$	<b>376,200.00</b>	
				<b>Project Total</b>	\$	<b>25,099,617.77</b>	



## Regional Intelligent Transportation Systems Plan 2016 Progress Report on Implementation

### **Introduction**

The Florida-Alabama, Okaloosa-Walton, and Bay County Transportation Planning Organizations worked as partners to complete the Regional Intelligent Transportation Systems (ITS) Plan. The Regional ITS Plan was adopted in September of 2010 by each of the three TPOs. The purpose of this report is to outline how each partner has strived to implement the recommendations outlined in the Regional ITS Plan. The vision outlined in the Regional ITS Plan is a looped system that benefits the region.

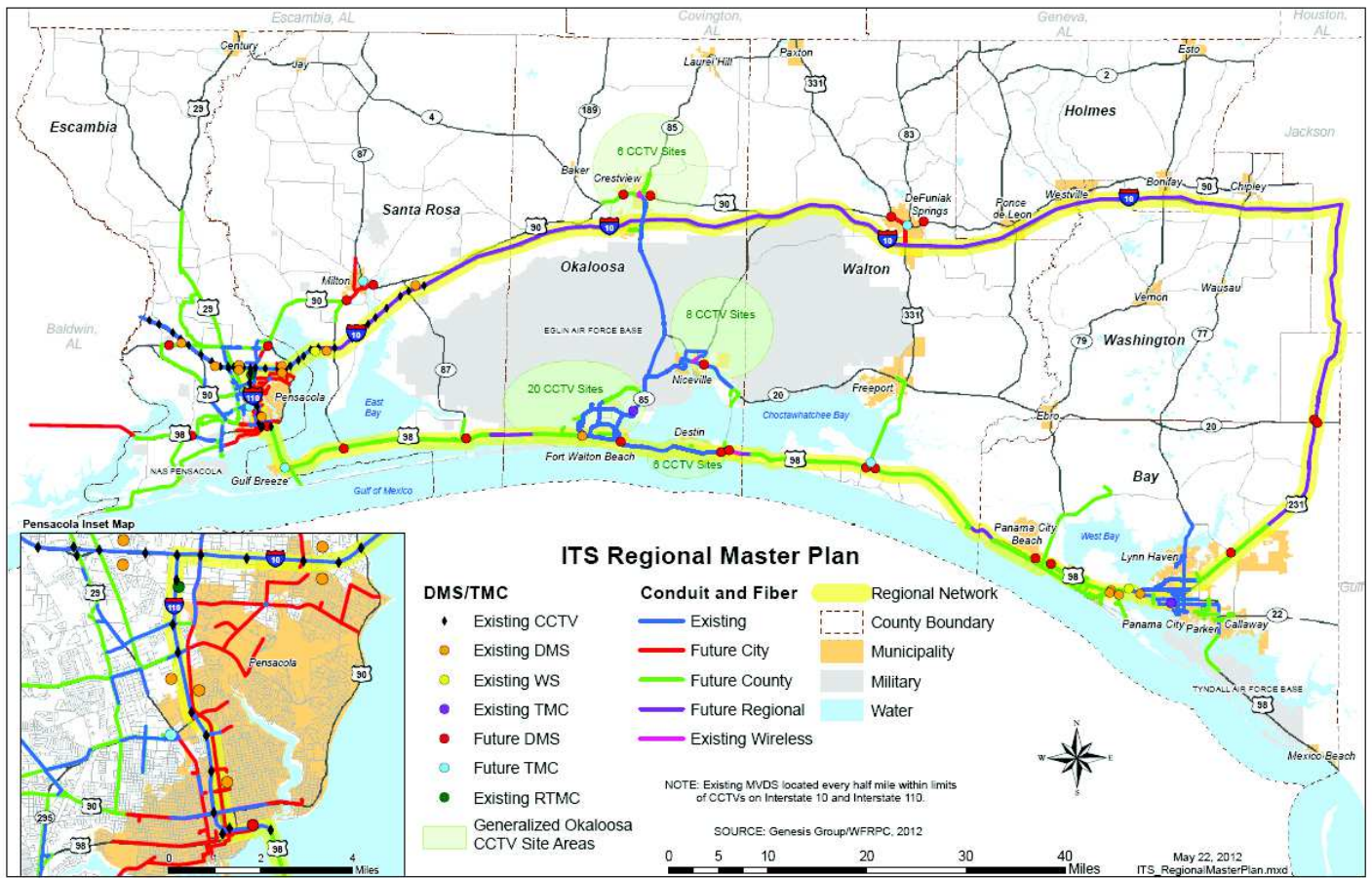
ITS is a program aimed at using computers and communications to make travel smarter, faster, safer, and more convenient. ITS helps reduce the cost of moving goods and services to the marketplace.

The Regional ITS Plan includes a list of ITS system needs for each TPO. Existing ITS networks in each TPO are identified and evaluated in the Regional ITS Plan. Moreover, future needs are evaluated and additional staffing needs for operation and maintenance of future ITS improvements and the implementation of a regional ITS network to benefit all three TPOs is included. The following is a progress report of what each TPO has employed or is planning to employ to implement the recommendations outlined in the Regional ITS Plan.

### **Regional ITS Network**

Sharing transportation information with transportation system users is a key characteristic of ITS applications. As transportation systems become more complex and interconnected, there is a need to share information with others in order to maximize the efficiency of the transportation network. In the Regional ITS Plan, a regional ITS network is recommended to connect all ITS components for all stakeholders in the region. Fiber optic cable is proposed along US 98 throughout the region. A fiber optic ring could be created with the proposed fiber running along US 98 to US 231 in Bay County, north to I-10, west on I-10 to I-110 in Escambia County, and south on I-110 to US 98. Figure 1 illustrates the existing and future needed fiber optic cable for a looped ITS network. A preliminary cost for the additional fiber optic cable is \$3,291,740 (2010 Dollars). Cameras, Dynamic Message Signs (DMS), Microwave Vehicle Detection Systems (MVDS), and a weather station exist along I-10 and I-110 to help with incident detection and motorist information.

**Figure 1- ITS Regional Master Plan Map**





## **Florida-Alabama TPO**

On September 8, 2010, through Resolution FL-AL 10-37, the Florida-Alabama TPO approved the Regional ITS Plan which includes the Florida-Alabama TPO, Okaloosa-Walton TPO, and Bay County TPO regions. The Florida-Alabama TPO has ranked the Escambia-Santa Rosa Regional ITS Project as number one (1) priority in the Transportation Improvement Program (TIP). The FL-AL TPO also created an ITS subcommittee to oversee the ITS implementation efforts in the Escambia and Santa Rosa Counties. The Escambia-Santa Rosa ITS Subcommittee meets monthly and is made up of representatives from Escambia and Santa Rosa Counties, the City of Milton, the City of Gulf Breeze, the City of Pensacola, West Florida Regional Council, and the FDOT. The group works together to ensure the ITS system is comprehensive, and includes a funding plan for the implementation and operation of a regional Advance Traffic Management System (ATMS) and a regional Traffic Management Center (TMC) and related infrastructure.

## **Escambia County and Santa Rosa County**

Since adoption the Regional ITS Plan, the following ITS projects have been deployed in the Escambia and Santa Rosa Counties:

- In 2013, the FDOT funded a continuing contract for implementation of an Active Arterial Management System on SR 291 (Davis Highway). The system consists of approximately 2.5 miles of arterial roadway from the intersection of Davis Highway at Johnson Avenue to the intersection of Davis Highway at SR 750 (Airport Boulevard) and ends at the Pensacola Regional Transportation Management Center (RTMC). The primary goals of this system are to improve safety, congestion, emergency response, incident management, and traffic flow along Davis Highway. Signalized intersections which are integrated in the Davis Highway System include Johnson Avenue, Klinger Street, University Parkway, Olive Road, Northcross Lane, I-10 WB Ramp, I-10 EB Ramp, Bloodworth Lane, Creighton, and Burgess Road. In 2016, two additional signalized intersection were added to the Davis Highway Active Arterial Management System at Longley Avenue and Airport Blvd.
- In 2013, FDOT awarded a design-build contract for implementation of the ATMS Phase I on Brent Lane/Bayou Blvd from North Palafox Street to North 12<sup>th</sup> Avenue, on North Palafox from Brent Lane to East Fairfield Drive, and on East Fairfield Drive from North Palafox Street to North 12<sup>th</sup> Avenue. The system includes integration of 18 signalized intersections along these corridors. This project included design, construction and integration of ITS infrastructure, including ten (10) cameras, approximately 6.7 miles of fiber optic cable, an Ethernet communication network, center to center communication, Closed Circuit Television (CCTV), and modification of existing closed loop systems. The project was completed in 2015 and accepted in January 2016.
- In 2015, Escambia County entered into a continuing professional services contract with DRMP, Inc. to provide general traffic engineering operation and management services including signal retiming, transportation engineering, planning and other support services

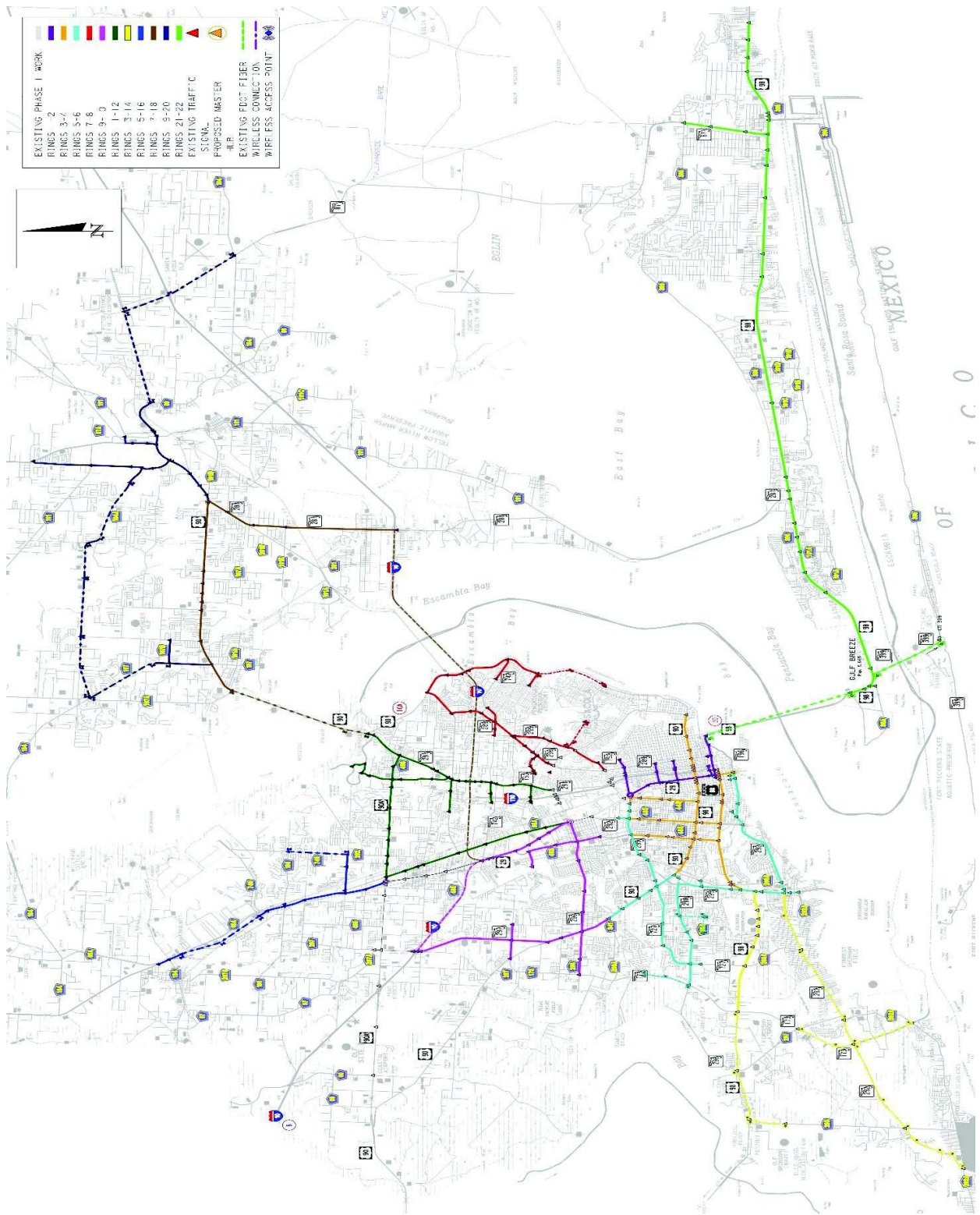
for Escambia and Santa Rosa Counties. In general, the consultant is functioning as an extension of staff for traffic engineering related services.

- In 2015, the Florida Department of Transportation and City of Pensacola initiated development of the Escambia-Santa Rosa Regional ATMS Feasibility Study and Implementation Plan project. The feasibility study will define a comprehensive plan to update and modernize traffic management tools and capabilities to prepare and assist the local agencies to meet their increasingly complex future transportation challenges. The Implementation Plan will be a blueprint for the modernization of the Escambia County and Santa Rosa County signal systems. A hardline communication link will be provided throughout the region with the deployment of 144-count single-mode fiber optic cable along key highways and arterials. More than 150 miles of fiber will be deployed either through proposed underground conduit or via the utilization of existing aerial spans, creating a direct link between all devices and TMC. Isolated signals or remote corridors will be brought onto the grid with the use of wireless network communication in the interest of cost savings. Incorporating ATMS Phase I, the region will deploy a bus network topology for the backbone communications that provides redundancy between the ATMS devices and the tactically positioned master hubs. In total, the proposed work for Phase II carries an estimated cost of \$25,000,000. The completion of Phase II will provide the region with the complete infrastructure and communications necessary for a full-scale ATMS system, while providing upgraded hardware to enhance the capability of performing active arterial management functions for improved corridor operations. Phase III of the ATMS system will include the full buildout of the ATMS system including the installation of arterial Dynamic Message Signs (DMS) and structures, Road Weather Information Systems (RWIS), Microwave Vehicle Detection Systems (MVDS), Bluetooth Travel Time Sensors, central software to monitor these devices, supporting communications infrastructure and a Regional Traffic Management Center (RTMC). The estimated cost of the ATMS Phase 3 is \$26,000,000. The Escambia-Santa Rosa Regional ATMS Feasibility Study and Implementation Plan will be completed in 2016. A copy of the Escambia-Santa Rosa Regional ATMS map and construction cost estimate for ATMS Phase 2 are included in the following pages.

#### Lillian, Alabama

Installation of fiber optic cables is recommended along the US 98 corridor or CCTVs at the signalized intersections in the unincorporated community of Lillian in Southwest Baldwin County, Alabama. A recommendation in the Regional ITS Plan is that these signals can be monitored by a small TMC. The total estimated 2010 capital costs are \$647,031 for 56,321 feet of fiber optic cable and conduit and five CCTVs in Lillian, Alabama.

# Escambia-Santa Rosa Regional ATMS Map





# Escambia-Santa Rosa Regional ATMS Phase 2 Cost Estimate



## ESCAMBIA/SANTA ROSA COUNTY REGIONAL ATMS MASTERPLAN QUANTITIES - Per Network Ring

PREPARED BY ATKINS

November 23, 2015

Version 3.0

### TMC Modifications

#### Escambia

Description :	Unit:	Quantity:	Note:	Unit Price:	Total:
Video Monitor Wall	EA	1		\$ 50,000.00	\$ 50,000.00
Workstations and Printers	EA	1		\$ 4,000.00	\$ 4,000.00
Network Wiring/Equipment	LS	1		\$ 26,000.00	\$ 26,000.00
Electrical/Lighting Modifications	LS	1		\$ 15,000.00	\$ 15,000.00
Arch/Mechanical Modifications	LS	1		\$ 30,000.00	\$ 30,000.00
Workstation Consoles	LS	1		\$ 4,000.00	\$ 4,000.00
Software Licenses	LS	1		\$ 20,000.00	\$ 20,000.00
Building Permits	LS	1		\$ 5,000.00	\$ 5,000.00
Servers and Central Management Software	LS	1		\$ -	\$ -
					<b>\$ 154,000.00</b>

#### Pensacola

Description :	Unit:	Quantity:	Note:	Unit Price:	Total:
Video Monitor Wall	EA	1		\$ 50,000.00	\$ 50,000.00
Workstations and Printers	EA	1		\$ 4,000.00	\$ 4,000.00
Network Wiring/Equipment	LS	1		\$ 26,000.00	\$ 26,000.00
Electrical/Lighting Modifications	LS	1		\$ 20,000.00	\$ 20,000.00
Arch/Mechanical Modifications	LS	1		\$ 45,000.00	\$ 45,000.00
Workstation Consoles	LS	1		\$ 4,000.00	\$ 4,000.00
Software Licenses	LS	1		\$ 20,000.00	\$ 20,000.00
Building Permits	LS	1		\$ 5,000.00	\$ 5,000.00
Servers and Central Management Software	LS	1		\$ -	\$ -
					<b>\$ 174,000.00</b>

TMC SubTotal		\$ 328,000.00
Mobilization		\$ 32,800.00
Contingency Amount - Initial		\$ 36,000.00
<b>TMC Modifications Total</b>		<b>\$ 396,800.00</b>



ESCAMBIA/SANTA ROSA COUNTY REGIONAL ATMS MASTERPLAN QUANTITIES - Per Network Ring

PREPARED BY ATKINS

November 23, 2015

Version 3.0

Ring No. 17/18

Intersections:

- 1 US-90/SR-10 at CR-197A/Woodbine Rd
- 2 US-90/SR-10 at CR-197/Chumucka Hwy
- 3 US-90/SR-10 at CR-197B/Spencer Field Rd
- 4 US-90/SR-10 at Spencer Field Rd
- 5 US-90/SR-10 at Watkins Rd
- 6 US-90/SR-10/Caroline St at Spears St
- 7 US-90/SR-10/Caroline St at Caronal St
- 8 US-90/SR-10/Caroline St at CR-197A/School Ln
- 9 US-90/SR-10/Caroline St at SR-281/Avalon Blvd (\*\*Mile)
- 10 SR-281/Avalon Blvd at Carroll Rd
- 11 SR-281/Avalon Blvd at CR-191A/Muliat Rd/Commerce Rd
- 12 SR-281/Avalon Blvd at CR-281B/Cynamid Rd/Pebble Ridge Dr

Wireless Intersections:

- 1 SR-281/Avalon Blvd at I-10 EB

Pay Item Number:	Description:	Unit:	Quantity:	Note:	Unit Price:	Total:
630-3-11	Conduit, F8I, Open Trench	LF	22480		\$ 5.33	\$ 119,818.40
630-3-12	Conduit, F8I, Directional Bore	LF	22480		\$ 11.60	\$ 260,768.00
633-2-124	Fiber Optic Cable, F8I, Underground, 144 Fibers	LF	48210		\$ 2.81	\$ 135,470.10
633-2-31	Fiber Optic Connection, Install, Splice	EA	192		\$ 49.53	\$ 9,509.76
633-3-11	Fiber Optic Connection Hardware, F8I, Splice Enclosure	EA	12		\$ 916.75	\$ 11,001.00
633-3-12	Fiber Optic Connection Hardware, F8I, Splice Tray	EA	24		\$ 95.05	\$ 2,377.20
633-3-15	Fiber Optic Connection Hardware, F8I, Preterminated Patch Panel	EA	12		\$ 238.82	\$ 2,865.84
635-2-12	Pull & Splice Box, F8I, 24"x36" Cover Size	EA	17		\$ 858.43	\$ 14,593.31
635-2-13	Pull & Splice Box, F8I, 30" X 60" Rectangular or 36" Round Cover Size	EA	12		\$ 1,478.04	\$ 17,736.48
639-1-122	Electrical Power Service, F8I, Underground	EA	12		\$ 1,210.61	\$ 14,527.32
639-3-11	Electrical Service Disconnect, F8I, Pole Mount	EA	12		\$ 896.74	\$ 10,760.88
641-2-12	Prestressed Concrete Pole, F8I, Type P-11 Service Pole	EA	12		\$ 737.36	\$ 8,848.32
670-5-112	Traffic Controller Assembly, F8I, NEMA, 2 Presentation Plan	AS	13		\$ 22,500.00	\$ 292,500.00
676-2-121	ITS Cabinet, F8I, pole mount, 356, 24" W X 36" H X 20" D, w/ sunshields	EA	1		\$ 4,500.00	\$ 4,500.00
682-1-11	ITS CCTV Camera, F8I, Dome Enclosure - Pressurized	EA	7		\$ 9,450.00	\$ 66,150.00
684-1-1	Managed Field Ethernet Switch, F8I	EA	14		\$ 2,360.68	\$ 33,049.52
684-4-1	Wireless Communication Device, F8I, Ethernet Access Point	EA	2		\$ 5,000.00	\$ 10,000.00
100-1	Mobilization	LS	50723.81			
102-1	Maintenance of Traffic	LS	50723.81			
677-1-11	Equipment Shelter - Master Hub	EA	25,000.00			
999-25	Initial Contingency Amount		\$ 114,092.37			
<b>Ring Total:</b>						<b>\$ 1,255,016.12</b>



ESCAMBIA/SANTA ROSA COUNTY REGIONAL ATMS MASTERPLAN QUANTITIES - Per Network Ring

PREPARED BY ATKINS

November 23, 2015  
Version 3.0

Ring No. 15/16

- Intersections:**
- 1 US-98/SR-95/Pensacola Blvd at 10 Mile Rd
  - 2 US-98/SR-95/Pensacola Blvd at Roberts Rd
  - 3 US-98/SR-95/Pensacola Blvd at CR-186/Kingsfield Rd
  - 4 US-98/SR-95/Pensacola Blvd at Tate School Rd
  - 5 US-98/SR-95/Pensacola Blvd at CR-749/Old Chemstrand Rd
  - 6 US-98/SR-95/Pensacola Blvd at Tree St/International Paper
  - 7 US-98/SR-95/Pensacola Blvd at CR-184/Muscogee Rd
  - 8 US-98/SR-95/Pensacola Blvd at CR-95A/Morris Ave
  - 9 Ten Mile Rd at CR-95A/Palalox St
  - 10 Ten Mile Rd at Ashton Brossaham Dr
  - 11 Ten Mile Rd at CR-749/Chemstrand Rd
  - 12 CR-186/Kingsfield Rd at CR-95A/Palalox St

- Wireless Intersections:**
- 1 CR-186/Kingsfield Rd at CR-749/Chemstrand Rd

Pay Item Number	Description	Unit	Quantity	Note	Unit Price	Total
630-2-11	Conduit, F&I, Open Trench	LF	14380		\$ 5.33	\$ 76,642.74
630-2-12	Conduit, F&I, Directional Bore	LF	14380		\$ 11.60	\$ 166,802.20
633-1-124	Fiber Optic Cable, F&I, Underground, 144 Fibers	LF	31859		\$ 2.81	\$ 89,523.79
633-2-31	Fiber Optic Connection, Install, Splice	EA	340		\$ 49.53	\$ 16,840.20
633-3-11	Fiber Optic Connection Hardware, F&I, Splice Enclosure	EA	13		\$ 916.75	\$ 11,917.75
633-3-12	Fiber Optic Connection Hardware, F&I, Splice Tray	EA	37		\$ 99.05	\$ 3,664.85
633-3-15	Fiber Optic Connection Hardware, F&I, Preterminated Patch Panel	EA	13		\$ 238.82	\$ 3,104.66
635-2-12	Pull & Splice Box, F&I, 24" X36" Cover Size	EA	10		\$ 858.43	\$ 8,584.30
635-2-13	Pull & Splice Box, F&I, 30" X 60" Rectangular or 36" Round Cover Size	EA	13		\$ 1,478.04	\$ 19,214.52
639-1-122	Electrical Power Service, F&I, Underground	EA	13		\$ 1,210.61	\$ 15,737.93
639-3-11	Electrical Service Disconnect, F&I, Pole Mount	EA	13		\$ 896.74	\$ 11,657.62
641-2-12	Prestressed Concrete Pole, F&I, Type P-I, Service Pole	EA	13		\$ 737.36	\$ 9,585.68
670-5-112	Traffic Controller Assembly, F&I, NEMA, 2 Preemption Plan	AS	14		\$ 22,500.00	\$ 315,000.00
676-2-121	ITS Cabinet, F&I, pole mount, 336, 24" W X 36" H X 20" D, w/ sunshields	EA	6		\$ 4,500.00	\$ 27,000.00
682-1-11	ITS CCTV Camera, F&I, Dome Enclosure - Pressurized	EA	7		\$ 9,450.00	\$ 66,150.00
684-1-1	Managed Field Ethernet Switch, F&I	EA	20		\$ 2,360.68	\$ 47,213.60
684-6-1	Wireless Communication Device, F&I, Ethernet Access Point	EA	3		\$ 5,000.00	\$ 15,000.00
101-1	Mobilization	LS	45,181.99			
102-1	Maintenance of Traffic	LS	90,363.98			
677-1-11	Equipment Shelter - Master Hub	EA	25,000.00			
999-25	Contingency Amount Initial	\$	106,418.58			
<b>Ring Total:</b>						<b>\$ 1,170,604.39</b>



ESCAMBIA/SANTA ROSA COUNTY REGIONAL ATMS MASTERPLAN QUANTITIES - Per Network Ring  
 PREPARED BY ATKINS  
 November 23, 2015  
 Version 3.0

Ring No. 13/14

- Intersections:**
- US-98/SR-30 at SR-727/Fairfield Dr
  - US-98/SR-30 at 72nd Ave
  - US-98/SR-30 at 61st Ave
  - US-98/SR-30 at Naval Hospital Pensacola
  - US-98/SR-30 at Veterans Way
  - US-98/SR-30 at Navy Exchange Rd

- Wireless Intersections:**
- CR-173/Bauer Rd at SW Escambia Co. Sports Complex
  - CR-173/Dogtrack Rd at CR-173/Blue Angel Parkway
  - CR-173/Blue Angel Parkway at SR-292A/Gulf Beach Hwy
  - SR-292/Sorrento Rd at CR-292A/Gulf Beach Hwy
  - US-98/SR-30 at SR-173/Blue Angel Pkwy
  - US-98/SR-30 at SR-298/Ollian Hwy/CR-297/Dog Track Rd
  - US-98/SR-30/Ollian Hwy at CR-173/Bauer Rd
  - SR-292/Gulf Beach Hwy at SR-277/Fairfield Dr
  - SR-292/Sorrento Rd at SR-292A/Gulf Beach Hwy
  - SR-292/Sorrento Rd at SR-173/Blue Angel Pkwy
  - SR-292/Sorrento Rd at CR-173/Bauer Rd

Pay Item Number:	Description:	Unit:	Quantity:	Note:	Unit Price:	Total:
630-2-11	Conduit, F&I, Open Trench	LF	8261		\$ 5.33	\$ 44,028.47
630-2-12	Conduit, F&I, Directional Bore	LF	8261		\$ 11.00	\$ 90,871.80
633-1-124	Fiber Optic Cable, F&I, Underground, 144 Fibers	LF	17921		\$ 2.81	\$ 50,358.01
633-2-31	Fiber Optic Connection, Install, Splice	EA	168		\$ 49.53	\$ 8,321.04
633-3-11	Fiber Optic Connection Hardware, F&I, Splice Enclosure	EA	6		\$ 916.75	\$ 5,500.50
633-3-12	Fiber Optic Connection Hardware, F&I, Splice Tray	EA	18		\$ 99.05	\$ 1,782.90
633-3-15	Fiber Optic Connection Hardware, F&I, Preterminated Patch Panel	EA	6		\$ 238.82	\$ 1,432.92
635-2-12	Pull & Splice Box, F&I, 24"x36" Cover Size	EA	4		\$ 858.43	\$ 3,433.72
635-2-13	Pull & Splice Box, F&I, 30" X 60" Rectangular or 36" Round Cover Size	EA	6		\$ 1,478.04	\$ 8,868.24
639-1-122	Electrical Power Service, F&I, Underground	EA	17		\$ 1,210.61	\$ 20,580.37
639-3-11	Electrical Service Disconnect, F&I, Pole Mount	EA	17		\$ 896.74	\$ 15,244.58
641-2-12	Prestressed Concrete Pole, F&I, Type P-II Service Pole	EA	17		\$ 737.36	\$ 12,535.12
670-5-112	Traffic Controller Assembly, F&I, NEMA, 2 Preemption Plan	AS	17		\$ 21,500.00	\$ 362,500.00
676-2-121	ITS Cabinet, F&I, pole mount, 336, 24" W X 36" H X 20" D, w/ sunshields	EA	1		\$ 4,500.00	\$ 4,500.00
682-1-11	ITS CCTV Camera, F&I, Dome Enclosure - Pressurized	EA	8		\$ 9,450.00	\$ 75,600.00
684-1-1	Managed Field Ethernet Switch, F&I	EA	18		\$ 2,360.88	\$ 42,492.24
684-6-1	Wireless Communication Device, F&I, Ethernet Access Point	EA	17		\$ 5,000.00	\$ 85,000.00
101-1	Mobilization	LS	\$ 42,900.00			
102-1	Maintenance of Traffic	LS	\$ 42,900.00			
999-25	Initial Contingency Amount	\$	\$ 94,379.99			
	<b>Ring Total:</b>				\$	<b>1,038,179.89</b>

**ESCAMBIA/SANTA ROSA COUNTY REGIONAL ATMS MASTERPLAN QUANTITIES - Per Network Ring**

PREPARED BY ATKINS  
November 23, 2015  
Version 3.0

**Ring No. 5/6**

**Intersections:**

- 1 Government St at Baylen St
- 2 Main St at Spring St
- 3 Government St at Spring St
- 4 Main St at E St
- 5 SR-292/Barrancas Ave at Main St
- 6 SR-292/Barrancas Ave at Pace Blvd
- 7 SR-292/Barrancas Ave at Live Oak Ave/Old Corry Field Rd
- 8 SR-292/Barrancas Ave at 2nd St
- 9 SR-292/Barrancas Ave at SR-295/Navy Blvd
- 10 SR-295/Navy Blvd at Sunset Ave
- 11 SR-295/Navy Blvd at Winthrop Ave
- 12 SR-295/Navy Blvd at Wal-Mart Super Center Entrance

- 13 SR-295/Navy Blvd at US-98
- 14 SR-295/Navy Blvd/New Warrington Rd at DonWb Dr
- 15 SR-295/New Warrington Rd at SR-294/Chief Hwy
- 16 SR-295/New Warrington Rd at SR-298/Jackson St
- 17 CR-298A/Jackson St at CR-295A/Old Corry Field Rd
- 18 SR-298A/Jackson St at SR-173/Blue Angel Pkwy
- 19 SR-298/Jillian Hwy at SR-173/Blue Angel Pkwy
- 20 SR-298/Jillian Hwy at 65th Ave
- 21 SR-298/Jillian Hwy at 57th Ave
- 22 SR-298/Jillian Hwy at 57th Ave
- 23 SR-727/Fairfield Dr at Crow Rd/Jackson St
- 24 SR-727/Fairfield Dr at Patricia Dr

- 25 SR-727/Fairfield Dr at 61st Ave
- 26 US-90/SR-10A/Mobile Hwy at CR-341/Marlane Dr
- 27 US-90/SR-10A/Mobile Hwy at Massachusetts Ave
- 28 US-90/SR-10A/Mobile Hwy at Edison Dr
- 29 US-90/SR-10A/Mobile Hwy at Cherokee Trl
- 30 US-90/SR-10A/Mobile Hwy at SR-727/Fairfield Rd
- 31 US-90/SR-10A/Mobile Hwy at SR-295/New Warrington Rd
- 32 SR-298/Jillian Hwy at SR-295/New Warrington Rd
- 33 SR-727/Fairfield Dr at South Dakota St
- 34 SR-727/Fairfield Dr/SR-295/New Warrington Rd at Ruby Ave
- 35 SR-295/Fairfield Dr at Hollywood Ave
- 36 SR-295/Fairfield Dr at CR-453/W St

**Existing Under Phase / (not replaced):**

- 1 SR-295/Fairfield Dr at Teasor St

**Wireless Intersections:**

- 1 CR-173/Blue Angel Parkway at Muldoon Rd
- 2 Jackson St at 57th Ave
- 3 Jackson St at 65th Ave

Pay Item Number:	Description:	Unit:	Quantity:	Rate:	Unit Price:	Total:
630-2-11	Conduit, F81, Open Trench	LF	20838	\$ 5.33	\$	109,469.32
630-2-12	Conduit, F81, Directional Bore	LF	41077	\$ 11.60	\$	476,489.33
630-2-15	Conduit, F81, Bridge Mount	LF	6849	\$ 16.51	\$	113,076.99
633-1-114	Fiber Optic Cable, F81, Overhead, 144 Fibers	LF	35456	\$ 3.15	\$	111,686.40
633-1-124	Fiber Optic Cable, F81, Underground, 144 Fibers	LF	78425	\$ 2.81	\$	220,374.25
633-2-31	Fiber Optic Connection, Install, Splice	EA	300	\$ 49.53	\$	14,859.00
633-3-11	Fiber Optic Connection Hardware, F81, Splice Enclosure	EA	39	\$ 91.75	\$	3,578.25
633-3-12	Fiber Optic Connection Hardware, F81, Splice Tray	EA	51	\$ 99.05	\$	5,051.55
633-3-15	Fiber Optic Connection Hardware, F81, Preterminated Patch Panel	EA	39	\$ 238.82	\$	9,313.98
635-2-13	Pull & Splice Box, F81, 24" X 36" Cover Size	EA	31	\$ 858.43	\$	26,611.33
635-2-14	Pull & Splice Box, F81, 30" X 60" Rectangular or 36" Round Cover Size	EA	39	\$ 1,478.04	\$	57,445.56
635-3-12	Junction box, F81, Mounted	EA	3	\$ 84.26	\$	252.78
635-3-122	Electrical Power Service, F81, Underground	EA	39	\$ 1,210.61	\$	47,213.79
639-1-11	Electrical Service Disconnect, F81, Pole Mount	EA	39	\$ 379.86	\$	14,735.54
639-1-112	Traffic Enclosure Assembly, F81, Pole Mount	EA	39	\$ 725.26	\$	28,285.14
639-1-113	Traffic Enclosure Assembly, F81, MECA, 2' Presentation Pole	EA	44	\$ 21,500.00	\$	946,000.00
670-5-112	ITS Cabinet, F81, pole mount, 336, 74" W X 35" H X 20" D, w/ Jumbields	AS	4	\$ 4,500.00	\$	18,000.00
670-5-121	ITS Cabinet, F81, pole mount, 336, 74" W X 35" H X 20" D, w/ Jumbields	EA	22	\$ 4,500.00	\$	99,000.00
682-1-11	ITS CCTV Camera, F81, Dome Enclosure - Pre-Installed	EA	45	\$ 9,450.00	\$	425,250.00
682-1-11	Managed Field Ethernet Switch, F81	EA	45	\$ 2,360.68	\$	106,230.60
684-6-1	Wireless Communication Device, F81, Ethernet Access Point	EA	4	\$ 5,000.00	\$	20,000.00
101-1	Mobilization	LS	\$	\$ 131,121.55	\$	
102-1	Maintenance of Traffic	LS	\$	\$ 131,121.55	\$	
677-1-11	Equipment Shelter - Master Hub	EA	\$	\$ 25,000.00	\$	
999-25	Contingency Amount Initial	EA	\$	\$ 290,967.40	\$	
<b>Ring Total:</b>						<b>\$ 3,200,641.43</b>



**ESCAMBIA/SANTA ROSA COUNTY REGIONAL ATMS MASTERPLAN QUANTITIES - Per Network Ring**

PREPARED BY ATKINS

November 23, 2015  
Version 3.0

**Ring No. 3/4**

Pay Item Number	Description	Unit	Quantity	Note
6302-11	Conduit, F80, Open Trench	LF	20894	
6302-12	Conduit, F80, Directional Bore	LF	41787	
6302-15	Conduit, F80, Bridge Mount	LF	6861	
633-1-14	Fiber Optic Cable, F80, Overhead, 144 Fibers	LF	17263	
633-1-124	Fiber Optic Cable, F80, Underground, 144 Fibers	LF	72681	
633-2-31	Fiber Optic Connection, Install, Splice	EA	320	
633-3-11	Fiber Optic Connection Hardware, F80, Splice Enclosure	EA	44	
633-3-12	Fiber Optic Connection Hardware, F80, Splice Tray	EA	56	
633-3-15	Fiber Optic Connection Hardware, F80, Preterminated Patch Panel	EA	44	
635-2-13	Pull & Splice Box, F80, 240x360" Cover Size	EA	24	
635-2-13	Pull & Splice Box, F80, 30" X 80" Rectangular or 36" Round Cover Size	EA	44	
635-3-12	Junction box, F80, Mounted	EA	10	
639-1-122	Electrical Power Service, F80, Underground	EA	44	
639-3-11	Electrical Service Disconnect, F80, Pole Mount	EA	44	
642-2-12	Prestressed Concrete Pole, F80, Type P-11 Service Pole	EA	44	
670-5-112	Traffic Controller Assembly, F80, NEMA-2 Preemption Plan	AS	44	
682-3-1-11	ITS CCTV Camera, F80, Dome Enclosure - Pressurized	EA	22	
684-1-1-1	Managed Field Ethernet Switch, F80	EA	44	
101-1	Mobilization	LS	\$ 128,061.19	
102-1	Maintenance of Traffic	LS	\$ 128,061.19	
677-1-1-1	Equipment Shelter - Master Hub	EA	\$ 25,000.00	
999-2-5	Initial Contingency Amount	\$	\$ 284,234.62	

Pay Item Number	Description	Unit	Quantity	Note	Unit Price	Total
25	SR-292/Pace Blvd at St. Mary Ave				\$ 5.33	\$ 111,363.24
26	CR-453/W St at Jackson St				\$ 11.60	\$ 484,733.07
27	CR-453/W St at Moreno St				\$ 16.51	\$ 113,275.11
28	CR-453/W St at Alvey St				\$ 3.15	\$ 54,378.45
29	CR-453/W St at Scott St				\$ 2.81	\$ 204,233.61
30	CR-295A/Old Corry Field Rd at SR-294/Chiefs Way				\$ 49.53	\$ 15,846.60
31	Palatka St at Main St (MHT*)				\$ 916.75	\$ 40,137.00
32	Business US-98/SR-30/Navy Blvd at CR-295A/Old Corry Field Rd				\$ 99.05	\$ 5,546.80
33	Business US-98/SR-30/Navy Blvd at SR-294/Chiefs Way				\$ 738.82	\$ 10,508.08
34	Business US-98/SR-30/Navy Blvd at CR-453/W St				\$ 858.43	\$ 20,609.32
35	Business US-98/SR-30/Navy Blvd at SR-292/Pace Blvd				\$ 1,478.04	\$ 65,033.76
36	Business US-98/SR-30/Garden St at E St				\$ 842.90	\$ 8,425.60
					\$ 1,210.61	\$ 53,246.84
					\$ 896.74	\$ 39,436.56
					\$ 737.36	\$ 32,443.84
					\$ 22,500.00	\$ 990,000.00
					\$ 9,450.00	\$ 207,900.00
					\$ 2,360.68	\$ 103,869.92
						<b>\$ 3,126,580.80</b>

Ring Total:

\$

\$

ESCAMBIA/SANTA ROSA COUNTY REGIONAL ATMS MASTERPLAN QUANTITIES - Per Network Ring

PREPARED BY ATKINS

November 23, 2015  
Version 3.0

Ring No. 1/2

Intersections:

- 1 SR-30/SR-196/Byfront Pkwy at 17th Ave
- 2 SR-30/Chase St at SR-196/Byfront Pkwy
- 3 SR-30/Chase St at US-98/9th Ave
- 4 Chase St at Tarragona St
- 5 Chase St at Palatka St
- 6 Chase St at Baylen St
- 7 Gregory St at Taragona St
- 8 Gregory St at Palatka St
- 9 Gregory St at 9th Ave
- 10 Gregory St at Alcanit St
- 11 Wright St at Palatka St
- 12 US-29/SR-95/Palatox St at Blount St
- 13 SR-29/SR-95/Palatox St at Blount St
- 14 US-29/SR-95/Palatox St at Jordan St
- 15 US-29/SR-95/Palatox St at Maxwell St
- 16 US-29/SR-95/Palatox St at Cross St/Leonard St
- 17 SR-29/DR MLK JR Dr at Blount St
- 18 Blount St at Davis Hwy
- 19 Blount St at SR-289/9th Ave
- 20 Jordan St at SR-289/9th Ave
- 21 SR-29/DR MLK JR Dr at Maxwell St
- 22 SR-29/DR MLK JR Dr at SR-752/Tear Dr
- 23 SR-752/Tear Dr at Davis Hwy
- 24 SR-752/Tear Dr at SR-289/9th Ave

Existing Under Phase (Not replaced):

- 1 US-29/SR-95/Palatox St at SR-752/Tear Dr (\*\*MHI)

Pay Item Number:	Description:	Unit:	Quantity:	Note:	Unit Price:	Total:
630-2-11	Conduit, F8I, Open Trench	LF	8686		\$ 5.33	\$ 46,294.60
630-2-12	Conduit, F8I, Directional Bore	LF	17371		\$ 11.60	\$ 201,507.47
630-2-15	Conduit, F8I, Bridge Mount	LF	2916		\$ 16.51	\$ 48,143.16
633-1-114	Fiber Optic Cable, F8I, Overhead, 144 Fibers	LF	3801		\$ 3.15	\$ 11,973.15
633-1-124	Fiber Optic Cable, F8I, Underground, 144 Fibers	LF	31707		\$ 2.81	\$ 89,086.67
633-2-31	Fiber Optic Connection, Install, Splice	EA	244		\$ 49.53	\$ 12,085.32
633-3-11	Fiber Optic Connection Hardware, F8I, Splice Enclosure	EA	25		\$ 916.75	\$ 22,918.75
633-3-12	Fiber Optic Connection Hardware, F8I, Splice Tray	EA	37		\$ 99.05	\$ 3,664.85
633-3-15	Fiber Optic Connection Hardware, F8I, Preterminated Patch Panel	EA	25		\$ 238.82	\$ 5,970.50
635-2-12	Pull & Splice Box, F8I, 24"x36" Cover Size	EA	13		\$ 858.43	\$ 11,159.59
635-2-13	Pull & Splice Box, F8I, 30" X 60" Rectangular or 36" Round Cover Size	EA	25		\$ 1,478.04	\$ 36,951.00
635-3-12	Junction Box, F8I, Mounted	EA	4		\$ 842.56	\$ 3,370.24
639-1-122	Electrical Power Service, F8I, Underground	EA	25		\$ 1,210.61	\$ 30,265.25
639-3-11	Electrical Service Disconnect, F8I, Pole Mount	EA	25		\$ 896.74	\$ 22,418.50
641-2-12	Prestressed Concrete Pole, F8I, Type P-115 Service Pole	EA	25		\$ 737.36	\$ 18,434.00
670-5-112	Traffic Controller Assembly, F8I, NEMA 2 Preemption Plan	AS	25		\$ 22,500.00	\$ 562,500.00
682-1-11	ITS CCTV Camera, F8I, Dome Enclosure - Pressurized	EA	13		\$ 9,450.00	\$ 122,850.00
684-1-1	Managed Field Ethernet Switch, F8I	EA	25		\$ 2,360.68	\$ 59,017.00
101-1	Mobilization	LS	\$ 65,431.00			
102-1	Maintenance of Traffic	LS	\$ 65,431.00			
677-1-11	Equipment Shelter - Master Hub	EA	\$ 25,000.00			
999-25	Contingency Amount Initial		\$ 146,448.21			
<b>Ring Total:</b>						<b>\$ 1,610,930.26</b>



ESCAMBIA/SANTA ROSA COUNTY REGIONAL ATMS MASTERPLAN QUANTITIES - Per Network Ring

PREPARED BY ATKINS

November 23, 2015

Version 3.0

TMC Modifications  
Escambia

Description :	Unit:	Quantity:	Note:	Unit Price:	Total:
Video Monitor Wall	EA	1		\$ 50,000.00	\$ 50,000.00
Workstations and Printers	EA	1		\$ 4,000.00	\$ 4,000.00
Network Wiring/Equipment	LS	1		\$ 26,000.00	\$ 26,000.00
Electrical/Lighting Modifications	LS	1		\$ 15,000.00	\$ 15,000.00
Acti/Mechanical Modifications	LS	1		\$ 30,000.00	\$ 30,000.00
Workstation Consoles	LS	1		\$ 4,000.00	\$ 4,000.00
Software Licenses	LS	1		\$ 20,000.00	\$ 20,000.00
Building Permits	LS	1		\$ 5,000.00	\$ 5,000.00
Servers and Central Management Software	LS	1		\$ -	\$ -
					<b>154,000.00</b>

Pensacola

Description :	Unit:	Quantity:	Note:	Unit Price:	Total:
Video Monitor Wall	EA	1		\$ 50,000.00	\$ 50,000.00
Workstations and Printers	EA	1		\$ 4,000.00	\$ 4,000.00
Network Wiring/Equipment	LS	1		\$ 26,000.00	\$ 26,000.00
Electrical/Lighting Modifications	LS	1		\$ 20,000.00	\$ 20,000.00
Acti/Mechanical Modifications	LS	1		\$ 45,000.00	\$ 45,000.00
Workstation Consoles	LS	1		\$ 4,000.00	\$ 4,000.00
Software Licenses	LS	1		\$ 20,000.00	\$ 20,000.00
Building Permits	LS	1		\$ 5,000.00	\$ 5,000.00
Servers and Central Management Software	LS	1		\$ -	\$ -
					<b>174,000.00</b>

101-1 TMC Sub Total \$ 328,000.00  
 999-25 Mobilization \$ 32,800.00  
 Contingency Amount - Initial \$ 36,080.00  
**TMC Modifications Total \$ 396,880.00**



## Okaloosa-Walton TPO

### Okaloosa County

Okaloosa County has an extensive ITS system already in place according to the Regional ITS Plan adopted by the Okaloosa-Walton TPO on September 16, 2010, through Resolution O-W 10-27. According to the Regional ITS Plan, Okaloosa County would benefit from additional fiber optic cable, CCTVs, and DMSs.

The crossing of the Mid-Bay Bridge with fiber, as recommended in the Regional ITS Plan is complete and will enhance the county's traffic control communication system that allows for incident management and evacuation surveillance over the bridge. Wireless communication installations have been installed to connect additional intersections to the system along the western portion of US 98 including Hurlburt Field and west to the county line. The Mid-Bay bridge signalized intersection on SR 20 and the intersections on SR 85, north of US 90, in Crestview at Stillwell Ave, Garden Street, and Airport Road have been added to the advanced traffic control system. Okaloosa County has also completed a signal retiming project for signals on SR 20 in the City of Niceville area. Before-and-after travel time study shows a significant reduction in average travel times of 10 percent overall during the weekdays and 22 percent during the PM peak hour weekday period. Table 1 shows the progress of ITS system implementation in Okaloosa County.

**Table 1 - Existing Inventory, Future ITS Needs, and 2016 Progress for Okaloosa County**

Okaloosa County- Incorporated and Unincorporated					
Item	Unit	Existing (2010)	Future	Projected Cost (2010)	Complete (2016)
Signalized Intersections	Each	141	*	N/A	N/A
Wireless Communication	Linear Feet	12,543	*	N/A	N/A
Fiber Optic Cable and Conduit	Linear Feet	404,756	168,984	\$1,858,824	118,200
Cameras	Each	19	48	\$264,000	76
DMS	Each	1	6	\$960,000	None
TMC	Each	1	*	N/A	N/A

\*No future needs are identified in the Regional ITS Plan.

The County's goal is to have monitoring capabilities at nearly all signalized intersections. Currently, 76 CCTVs exists throughout Okaloosa County at intersections in the following areas:

- South County - Fort Walton Beach, Shalimar, Mary Esther Urbanized Area (excluding Destin) - 39 CCTVs
- Destin Area - 12 CCTVs
- Niceville/Bluewater - 14 CCTVs
- Crestview Area - 11 CCTVs

Walton County

Fiber optic cable along with CCTV cameras and DMS are also recommended in Walton County. Fiber optic cable is not proposed to extend from DeFuniak Springs to US 98. Development is sparse on US 331 and connecting cable is not cost feasible. A TMC is also not feasible in this county. However, small control rooms in existing offices will allow existing staff to monitor ITS systems in each maintaining agency.

Walton County has entered into a JPA with FDOT in the amount of \$100,000. The JPA has allowed procurement of a traffic engineer to facilitate ITS deployment in Walton County. The new traffic engineer, funded through the JPA, will maximize the capabilities and optimization of the existing system of traffic signals within the county, and perform other valuable traffic operations and engineering duties throughout the region. After covering salary expenses, the budget for this project will fund resources to support the traffic engineer's work. Table 2 shows the progress of ITS implementation in Walton County and the City of DeFuniak Springs.

**Table 2 - Existing Inventory, Future ITS Needs, and 2016 Progress for Walton County and City of DeFuniak Springs**

Walton County					
Item	Unit	Existing (2010)	Future	Projected Cost (2010)	Complete (2016)
Signalized Intersections	Each	22	*	N/A	25
Fiber Optic Cable and Conduit	Linear Feet	None	190,363	\$2,093,993	None
Cameras	Each	None	10	\$55,000	None
DMS	Each	None	4	\$640,000	None
TMC Small Office	Each	None	1	\$10,575	None
City of DeFuniak Springs					
Signalized Intersections	Each	9	*	N/A	N/A
Fiber Optic Cable and Conduit	Linear Feet	None	24,592	\$270,512	None
Cameras	Each	None	6	\$33,000	None
TMC small office	Each	None	1	\$10,575	None

\*No future needs are identified in the Regional ITS Plan.

## **Bay County TPO**

According to the Regional ITS Plan, Bay County has numerous signalized intersections and roadway corridors that could benefit from ITS expansion, particularly in the City of Panama City Beach. Growth of the beach area continues, and the signals on the beach need to be coordinated with the TMC. In addition, extending the ITS network on US 231 would benefit this major corridor. Adding CCTVs and additional fiber cable for coordination of signals can be controlled by the existing TMC.

Many of the ITS future needs recommended in the Regional ITS Plan have been funded since 2010 to include installation of over 450,000 linear feet of fiber optic cable and conduit. In addition, one Remote Weather Information System was installed. See Table 3 for a progress of ITS system implementation in Bay County.

**Table 3 - Existing Inventory, Future ITS Needs, and 2016 Progress for Bay County**

Bay County- Incorporated and Unincorporated					
Item	Unit	Existing (2010)	Future	Projected Cost (2010)	Complete (2016)
Signalized Intersections	Each	178	*	N/A	178
Fiber Optic Cable and Conduit	Linear Feet	250,679	359,499	\$3,954,489	459,613
Cameras	Each	43	25	\$137,500	86
DMS	Each	4	5	\$800,000	5
TMC	Each	1	*	N/A	1
Weather Station	Each	1	*	N/A	1

\*No future needs are identified in the Regional ITS Plan.

## **Summary**

The goal of this progress report on TPO implementation of the recommendations outlined in the Regional ITS Plan that was adopted in September 2010, is to remind the TPO partners in the region that the vision is to create a looped ITS system that integrates the ITS systems built in each TPO area and provides a compatible and seamless ITS link. If there is a break in the link, other ends of the looped system can communicate, providing information for movement of freight, emergency vehicles and the traveling public. There is a clear economic benefit to looping the systems. The first priority is to build reliable and compatible systems within each TPO area and to work with the FDOT on creating a seamless ITS network.