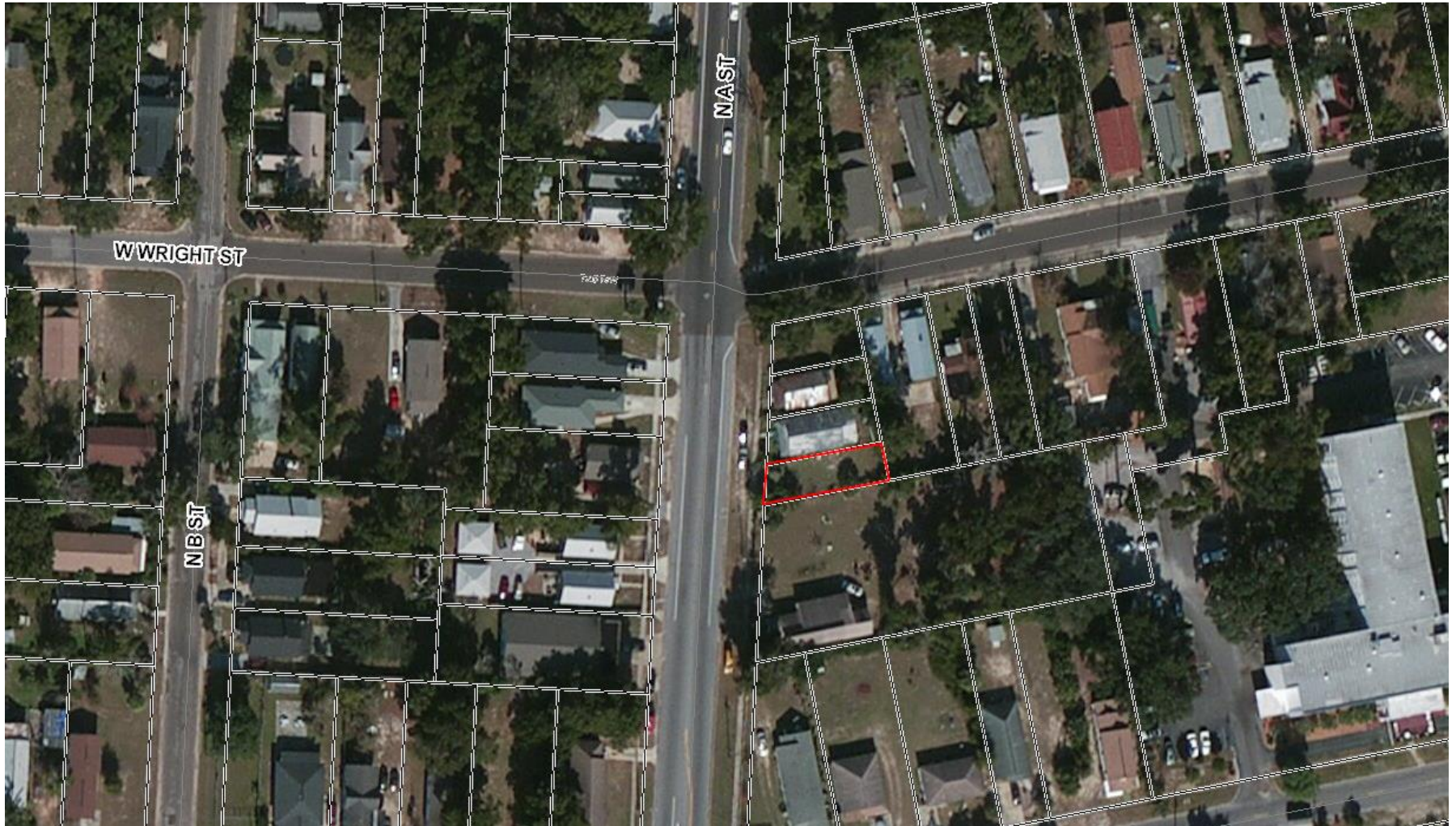


216 North "A" Street



Source: Escambia County Property Appraiser

← Navigate Mode  Account  Reference →

[Restore Full Page Version](#)

General Information	
<b>Reference:</b>	000S009010163083
<b>Account:</b>	131804000
<b>Owners:</b>	COMMUNITY REDEVELOPMENT AGENCY OF THE PENSACOLA CITY OF
<b>Mail:</b>	PO BOX 12910 PENSACOLA, FL 32521
<b>Situs:</b>	216 N A ST 32502
<b>Use Code:</b>	VACANT RESIDENTIAL
<b>Taxing Authority:</b>	PENSACOLA CITY LIMITS
<b>Schools (Elem/Int/High):</b>	GLOBAL LEARNING ACADEMY/WORKMAN/PENSACOLA
<b>Tax Inquiry:</b>	<a href="#">Open Tax Inquiry Window</a>
Tax Inquiry link courtesy of Scott Lunsford Escambia County Tax Collector	

Assessments				
Year	Land	Imprv	Total	Cap Val
2017	\$9,149	\$0	\$9,149	\$7,495
2016	\$7,189	\$0	\$7,189	\$6,814
2015	\$6,195	\$0	\$6,195	\$6,195

[Disclaimer](#)

[Amendment 1/Portability Calculations](#)

★ [File for New Homestead Exemption Online](#)

Sales Data					
Sale Date	Book	Page	Value	Type	Official Records (New Window)
02/13/2008	6288	1439	\$100	WD	<a href="#">View Instr</a>
07/2003	5191	706	\$100	TD	<a href="#">View Instr</a>

Official Records Inquiry courtesy of Pam Childers Escambia County Clerk of the Circuit Court and Comptroller

2017 Certified Roll Exemptions
MUNICIPAL OWNED
Legal Description
S 27 7/10 FT OF S 90 FT OF LTS 16 17 AND OF W 8 FT 4 IN OF LT 15 MAXENT TRACT BEL NO BLK 83 BELMONT TRACT OR 6288...
Extra Features
None



<b>Buildings</b>
Images
None

The primary use of the assessment data is for the preparation of the current year tax roll. No responsibility or liability is assumed for inaccuracies or errors.