

Features

- 1600 Wall System®3 is an inside / outside glazed captured curtain wall
- 1600 Wall System®3 has a 2-1/2" (63.5) sight line
- Standard 6" (152.4) or 7-1/2" (190.5) depth systems are compatible with System®1 and System®2
- Inside glazed verticals utilize the IsoStrut® thermal barrier to provide superior structural and thermal performance
- Integral vertical exterior cover and thermal barrier reduce installed cost
- Horizontals utilize a thermal separator and pressure plate to allow for glazing or re-glazing from the exterior
- Standard infill options are 1/8" (3.2), 1/4" (6.4) and 1" (25.4)
- Thermally Broken by means of a continuous 1/4" (6.4) low conductance spacer
- Concealed fastener joinery creates smooth, monolithic appearance
- Shear block fabrication method
- Standard 90 and 135 degree inside and outside corners
- Offers integrated entrance framing systems
- Peroxide-cure high performance EPDM silicone compatible glazing materials for long-lasting seals
- Two color option
- Permanodic® anodized finishes in seven choices
- Painted finishes in standard and custom choices

Optional Features

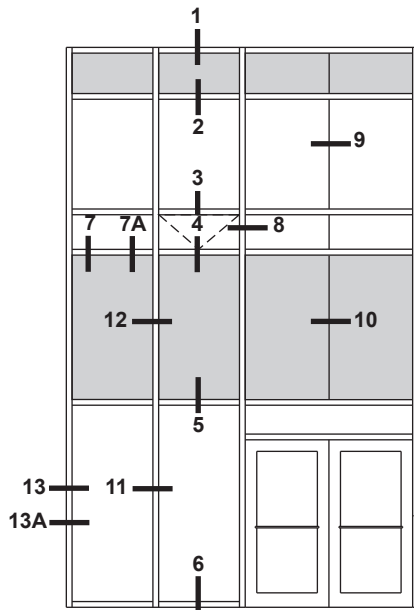
- Steel reinforcing
- Integrates with standard Kawneer windows and GLASSvent® windows for curtain wall
- 1600 PowerWall® solar photovoltaic (PV) infill in lieu of glass

Product Applications

- Ideal for low-rise to high-rise curtain wall applications where inside glazing and high performance is desired

For specific product applications,
consult your Kawneer representative.

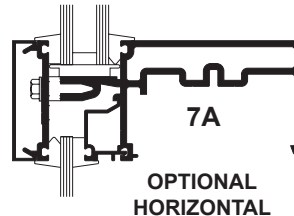
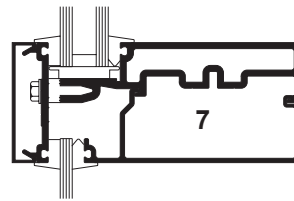
Additional information and CAD details are available at www.kawneer.com



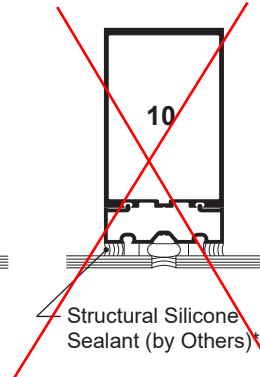
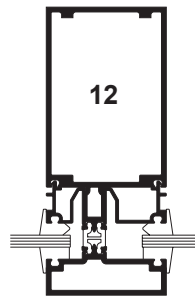
ELEVATION IS NUMBER KEYED TO DETAILS

NOTE:

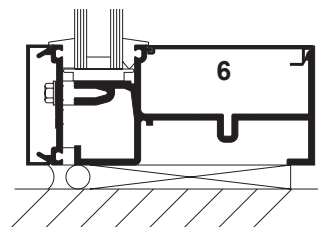
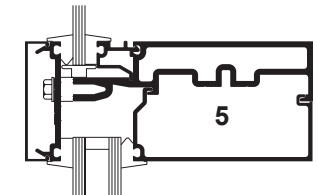
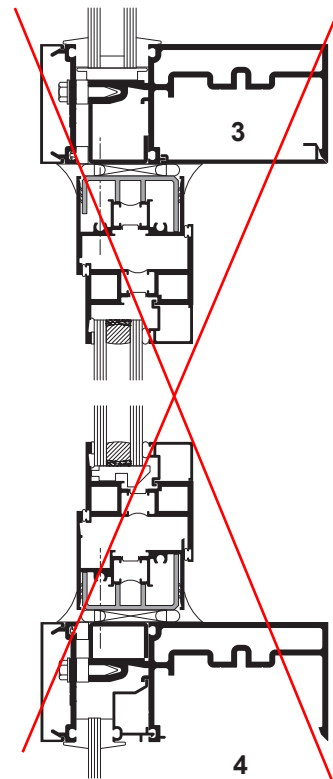
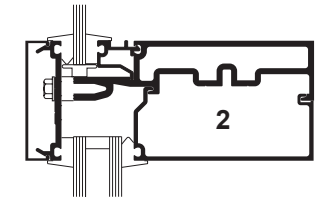
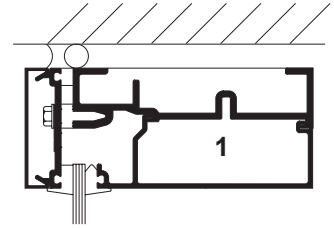
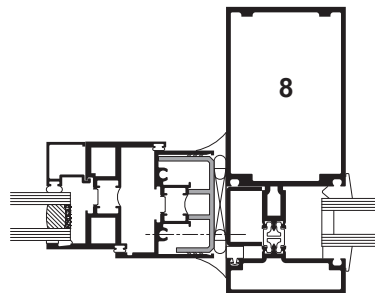
6" SYSTEM SHOWN, 7-1/2" SIMILAR.
INSIDE GLAZED IsoStrut® VERTICALS SHOWN.



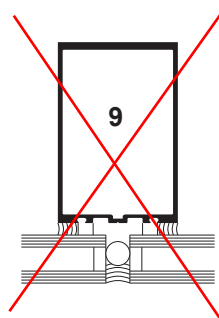
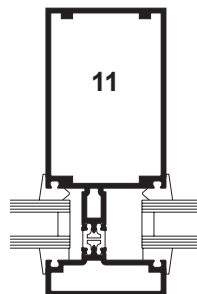
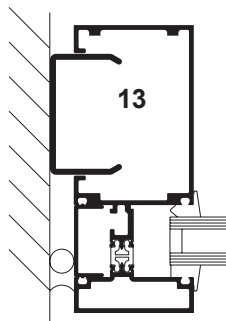
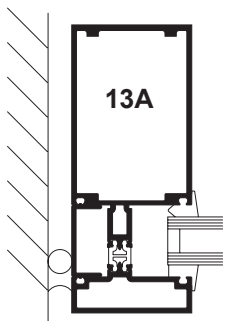
OPTIONAL
HORIZONTAL



Structural Silicone
Sealant (by Others)



**ALTERNATE
JAMB**



Laws and building and safety codes governing the design and use of Kawneer products, such as glazed entrance, window, and curtain wall products, vary widely. Kawneer does not control the selection of product configurations, operating hardware, or glazing materials, and assumes no responsibility therefor.

Kawneer reserves the right to change configuration without prior notice when deemed necessary for product improvement.

© 2014, Kawneer Company, Inc.

* **INSTALLER NOTE:** Installer is responsible for all required compatibility review and approvals with the Structural Silicone Manufacturer and the Insulated Glass Unit Manufacturers.

**Features**

- IR 501T/IR 501UT is 5" (127) deep and has a 2-3/4" (69.9) sightline
{Expansion mullions have a 3" (76.2) sightline}
- Screw Spline fabrication
- IR 501T Single IsoLock™ lanced pour and debridge thermal break
- IR 501UT Dual IsoLock™ lanced pour and debridge thermal break
- Center glazed
- Outside glazed
- Permanodic™ anodized finishes in seven choices
- Painted finishes in standard and custom choices

Optional Features

- Integrated entrance framing
- 350 IR/500 IR - single or pairs of entrances
- Strap anchor at head and jamb
- Acoustical rating per AAMA 1801 and ASTM E 1425
- Project specific U-Factor (see thermal charts)

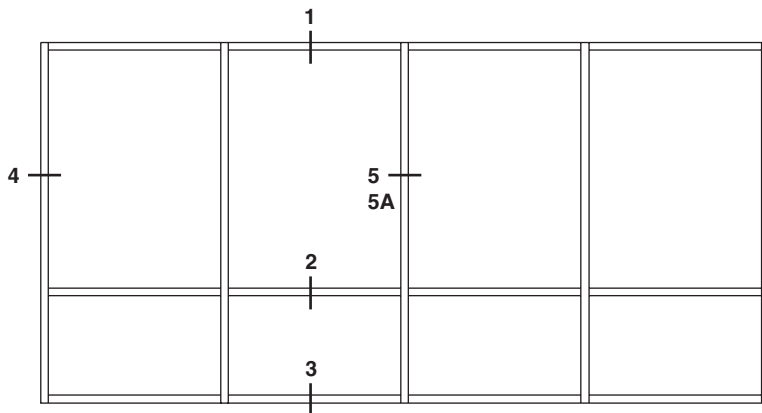
Product Applications

- Impact resistant
- Storefront, ribbon window or punched opening
- Low to mid-rise
- Single span
- GLASSvent™ Windows for Storefront Framing are easily incorporated

For specific product applications,
consult your Kawneer representative.



Additional information and CAD details are available at www.kawneer.com



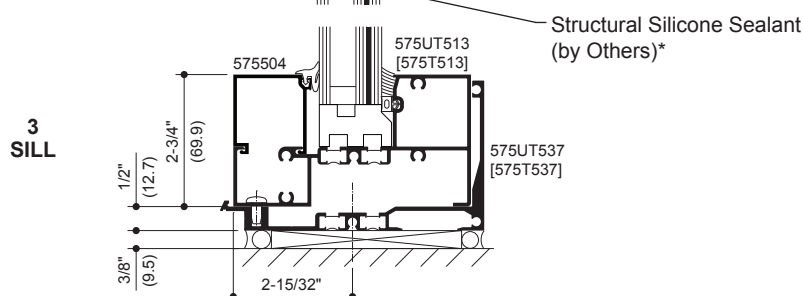
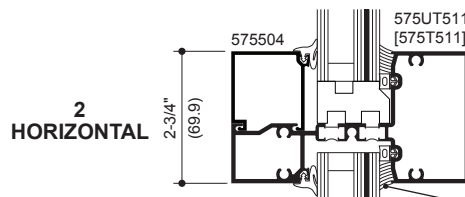
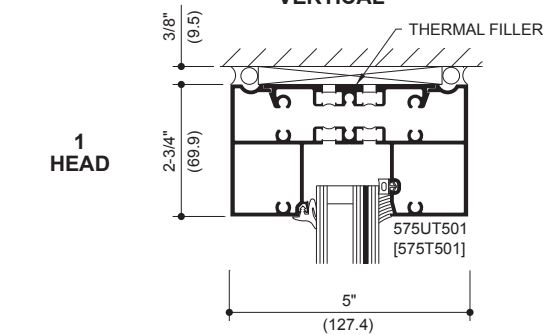
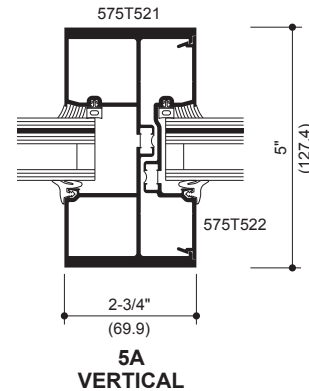
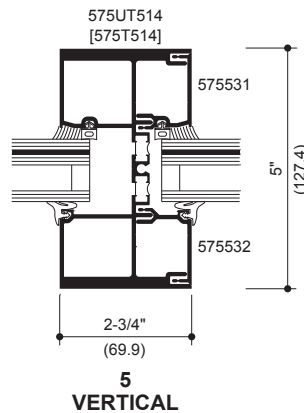
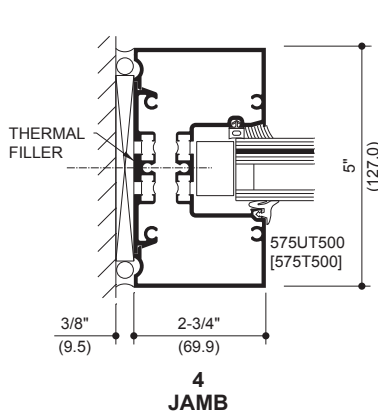
ELEVATION IS NUMBER KEYED TO DETAILS



IR 501T Single IsoLock™
THERMAL BREAK



IR 501UT DUAL IsoLock™
THERMAL BREAK (SHOWN)



* INSTALLER NOTE: Installer is responsible for all required compatibility review and approvals with the Structural Silicone Manufacturer and the Insulating Glass Unit Manufacturer.

METAL RAILING SYSTEM



feeney® 

DesignRail®

Create Your Own Railing Systems

Create Your Own

DesignRail® railings are easily adaptable to any exterior, interior, commercial, or residential project. Simply choose from the style options to create your perfect railing design.

STEP

1

Select a railing height

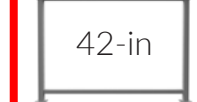
Posts for horizontal railings come pre-cut for 36-in, 39-in and 42-in railing heights. Stair or custom posts must be cut to height in the field and extrusions can be ordered in 10-ft or 20-ft lengths for that purpose. When using horizontal cable infill, all posts, including stair posts, are available pre-drilled for the cables.



36-in



39-in



42-in

Building codes in your area may require your rails to meet a minimum height. Consult your local building codes when choosing a height for your project.

STEP

2

Select a mounting type

Posts are made from 2 $\frac{3}{8}$ -in square tube extrusions in three distinct cross-sectional profiles: Standard, Commercial Base Mount, and Heavy Duty. Each is specially engineered to provide optimal structural strength and design performance for specific usage and load conditions. Our customer service team will determine which posts are required depending on the type of project and the railing design options selected.

Our 90° single corner posts and pre-drilled stair posts and pickets will reduce installation time and save money when using horizontal CableRail cable infill (see pg.6).

POST TYPES (Determined by project type, railing usage and conditions)

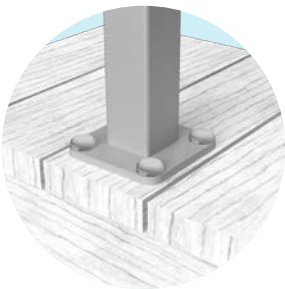


Square posts

Standard, Commercial Base Mount, and Heavy Duty profiles available.

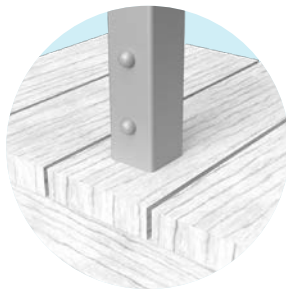
45° posts

Standard and Commercial Base Mount profiles available.



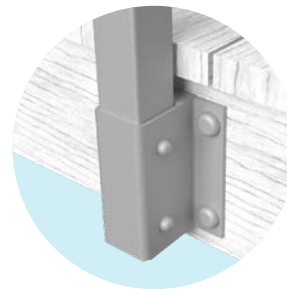
BASE MOUNT

- For top mounting to deck, patio, floor, or stair tread surfaces
- $\frac{3}{8}$ -in thick by 5-in square base plate for square posts and $\frac{3}{8}$ -in thick with a 1 $\frac{1}{4}$ -in contour reveal for 45° posts
- Plates come pre-attached to posts
- Optional decorative base plate covers are available (see pg. 9)



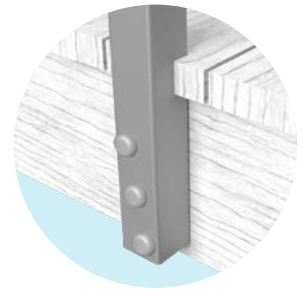
STANCHION MOUNT

- For mounting with stone or tile covered concrete slabs or on roof decks where penetration of waterproof roofing membranes must be minimized
- Stanchions are attached to the structural members prior to pouring the slab or laying the roof membrane. Railing posts are then sleeved over the protruding stanchion and secured with screws
- Available in steel, aluminum or stainless steel



FASCIA BRACKET MOUNT

- For side mounting to fascia or rim joists when decking or nosing trim extends beyond the edge of the fascia board
- Posts are attached using metal brackets that have 1 $\frac{1}{4}$ -in standoff
- Railing may require a bottom rail when using this method

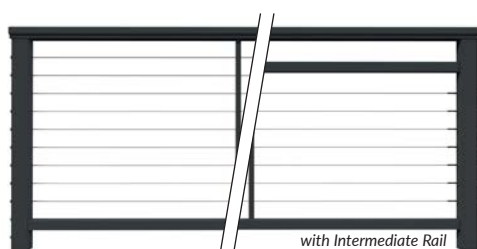


FASCIA MOUNT

- For side mounting to fascia boards, joists, or walls
- Posts come with pre-drilled bolt holes

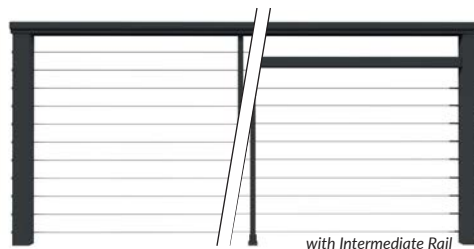
Select an infill type

With limitless design potential, Feeney makes it easy to create a cohesive look and feel from the inside-out with multiple infill and railing solutions that complement an array of interior and exterior styles.



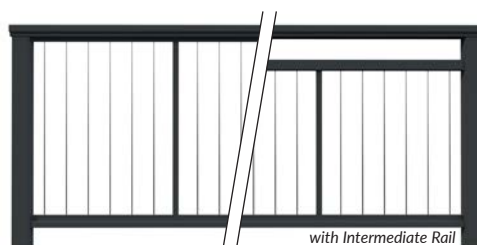
HORIZONTAL CABLES - BOTTOM RAIL

- Pre-fabricated $\frac{1}{8}$ -in diameter stainless steel CableRail Kits for easy cable installation
- A vertical intermediate picket is used mid-span to minimize cable deflection
- All posts and pickets come pre-drilled for cables



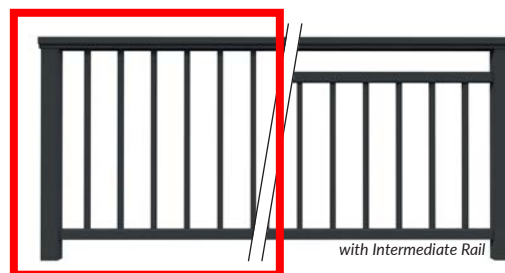
HORIZONTAL CABLES - NO BOTTOM RAIL

- Pre-fabricated $\frac{1}{8}$ -in diameter stainless steel CableRail Kits for easy cable installation
- A vertical intermediate picket is used mid-span to minimize cable deflection
- All posts and pickets come pre-drilled for cables



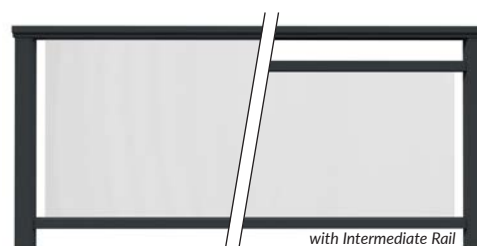
VERTICAL CABLES

- $\frac{1}{8}$ -in diameter 316-grade stainless steel cables come prefabricated to size with all of the attachment fittings, ready to install
- Two vertical intermediate pickets are spaced mid-span to maximize frame rigidity



VERTICAL PICKETS

- $\frac{3}{4}$ -in square aluminum pickets powder-coated to match the frame color
- Available in pre-assembled panels that can be trimmed to length



TEMPERED GLASS

- Clear or custom tinted panels that are easily inserted into vinyl lined slots in the Top Rail and Bottom Rail
- No special mounting hardware needed
- Glass panels are pre-cut to fit the final opening measurements

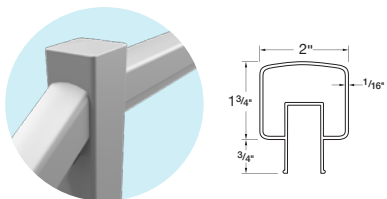


STEP

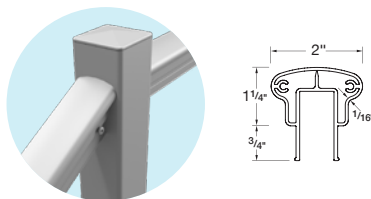
4

Select a top rail style

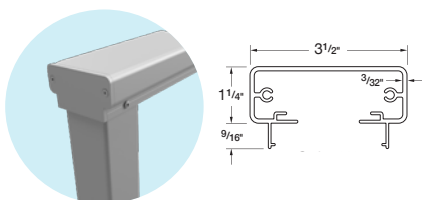
Top rails come in 6 styles and are sold in 10-ft and 20-ft lengths that can be trimmed to size in the field. Series 150 Graspable Top Rails are used on stairs to provide a graspable rail option. Series 150 and Series 100 Top Rails are attached to the faces of the posts using Rail Connecting Brackets (RCBs). Series 200, 300, and 450 Top Rails rest on the tops of the posts and are secured with stainless steel screws. Applied Continuous Handrails with extensions and returns are available as an accessory item to meet ADA and code handrail requirements (see page 14).

**SQUARE TOP RAIL** (Series 100)

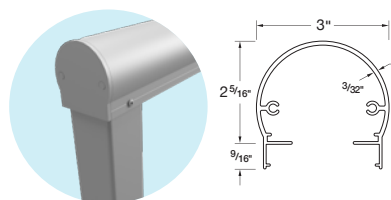
- 2-in wide square-shaped top rail
- The narrow width allows it to be installed between posts (using RCBs) instead of on top of posts, creating a newel-post-style railing with posts rising above the top rail
- Post to post top rail

**GRASPABLE TOP RAIL** (Series 150)

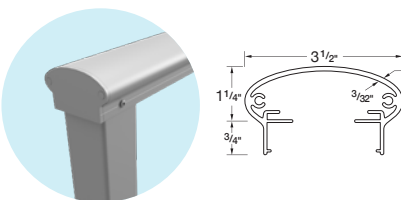
- 2-in wide top rail with easy-to-grasp shape
- Can be used for both stair and horizontal railings
- Meets residential code requirements for stair handrail sizing. Requires a handrail when used on stairs in commercial settings
- Available in new woodgrain colors* (Weathered Gray, Cherry, Walnut)

**RECTANGLE TOP RAIL** (Series 200)

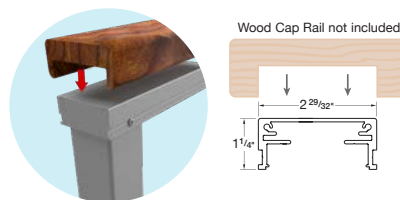
- 3½-in wide rectangular top rail
- The flat surface is a convenient perch for your favorite beverage as you relax and gaze at the view
- Requires a handrail when used on stairs
- Available in new woodgrain colors* (Weathered Gray, Cherry, Walnut)
- Over the post top rail

**ROUND TOP RAIL** (Series 300)

- 1½-in radius top rail
- The smooth rounded shape offers a more contemporary accent to those less traditional architectural designs
- Requires a handrail when used on stairs
- Over the post top rail

**ELLIPTICAL TOP RAIL** (Series 350)

- 3½-in wide elliptical top rail
- The sleek, stylish design offers another option for those who prefer a less angular top rail appearance
- Requires a handrail when used on stairs
- Over the post top rail

**-PROFILE TOP RAIL** (Series 450)

- Low-profile top for adding your own wood or composite cap rails
- Cap rails are optional and are not included
- Requires a handrail when used on stairs
- Over the post top rail

STEP

5

Select a frame & top rail color

Durable, powder coated finishes adhere to AAMA-2604 coating specifications for superior color retention, impact resistance, and weather protection.



COLOR OPTIONS

BRIGHT WHITE

MODERN WHITE

COFFEE CREAM

SILVER

DOVE GRAY

IRON GRAY

BLUE STEEL

MATTE BLACK

TEXTURED BLACK

SPARKLING CHAMPAGNE

BRONZE

OIL RUBBED BRONZE

BRICKYARD RED

COMMODORE BLUE

HARTFORD GREEN

WOOD GRAIN TOP RAIL OPTIONS

(AVAILABLE ONLY IN TOP RAIL SERIES 150/200)

WEATHERED GRAY

CHERRY

WALNUT

To learn more visit feeneyinc.com/ColorEasy

Choose accessories

Feeney Lighting



Our 24v lighting is manufactured with high quality, weatherproof materials for reliable performance, and energy efficient 50,000 hour-rated LEDs with a high color rendering index (80+) for truer colors. Plug & play connectors make installations a breeze. All kits are UL certified.



POST ACCENT LIGHT

The decorative aluminum sconce has a durable powder-coated finish and attaches to the post face to create a beautiful down light; great for stair railing accents. The sconce can be finished to match the railing frame color, and can be used with all infill options.
Compatible with all infills.



FEENEY RAIL LIGHTING

Feeney 24V Wet Location Strip Light is a versatile, linear light that provides high output lighting for indoor and outdoor applications. High lumen output makes it ideal for railing lighting, as well as an efficient ambient light when installed with a compatible dimmer switch. This strip features a flexible, weatherproof housing that resists the elements and dust.

Compatible in top rail, when using horizontal CableRail infill only. Compatible in bottom rail when using Horizontal CableRail, Glass, Picket, Resin, Mesh & Laser Panel infill only.

POWER KITS

Outdoor rated 24 volt dimmable drivers in 40, 60, and 96 watt (all driver kits sold separately).

Other accessories



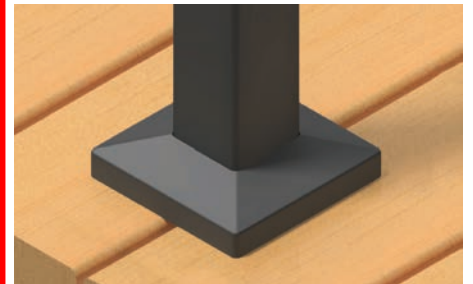
GATES

Custom fabricated to size and available for all railing styles and infill types. Comes with gate hardware accessories.



HANDRAILS

1½-in diameter aluminum handrails meet stair railing code requirements and are available with ADA compliant extensions and returns. Handrails are custom bent and fabricated, ready to install, and are powder-coated to match the railing frame colors.



BASE PLATE COVERS

Decorative base plate covers add a finished detail to base mounted posts, and they come powder-coated to match the railing color. The two-piece design allows easy installation for both new and retrofitted railings.

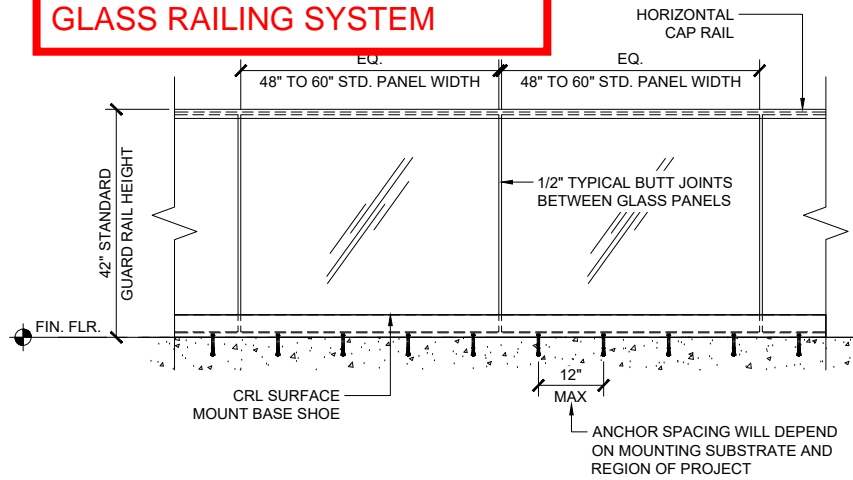


INTERMEDIATE HORIZONTAL RAIL

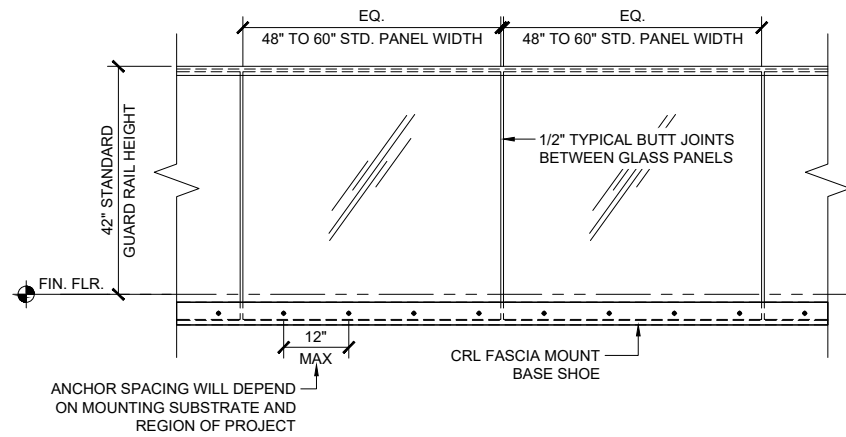
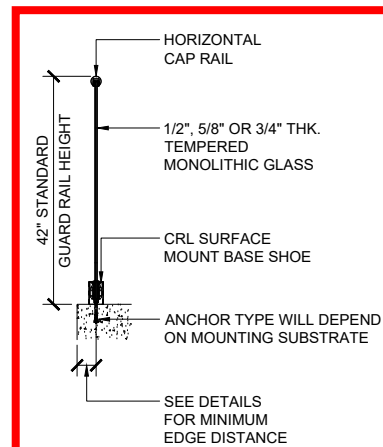
Used for creating railing designs with partial height infill. Sold in 10-ft and 20-ft lengths that can be trimmed to size in the field. Attaches to the post using Rail Connecting Brackets (RCBs).

Can be used with all infill options.

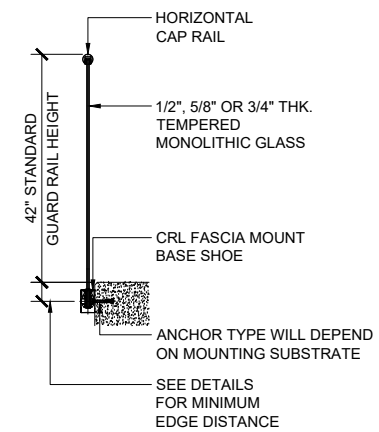
GLASS RAILING SYSTEM



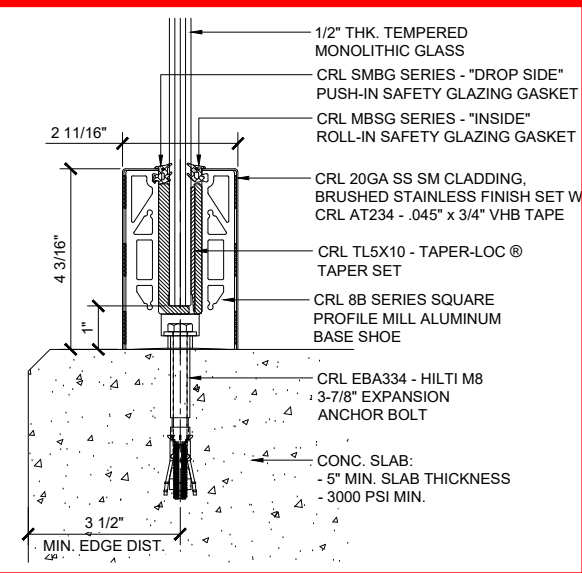
TYPICAL GRS GLASS RAILING ELEVATION VIEW - SURFACE MOUNT



TYPICAL GRS GLASS RAILING ELEVATION VIEW - FASCIA MOUNT

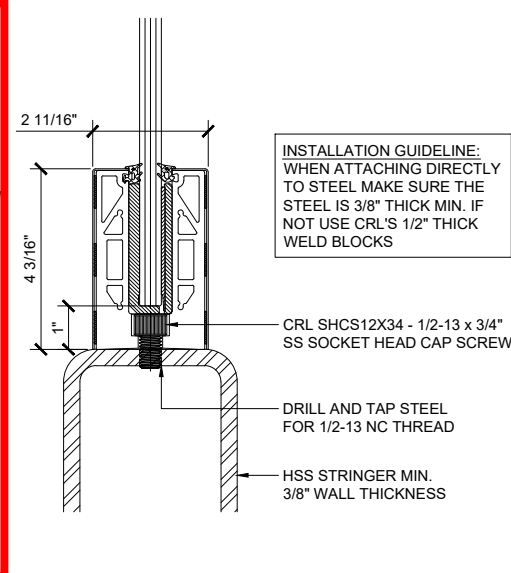


TYPICAL BASE SHOE ATTACHMENTS USING THE 8B SERIES BASE SHOE WITH TAPER-LOC® SYSTEM



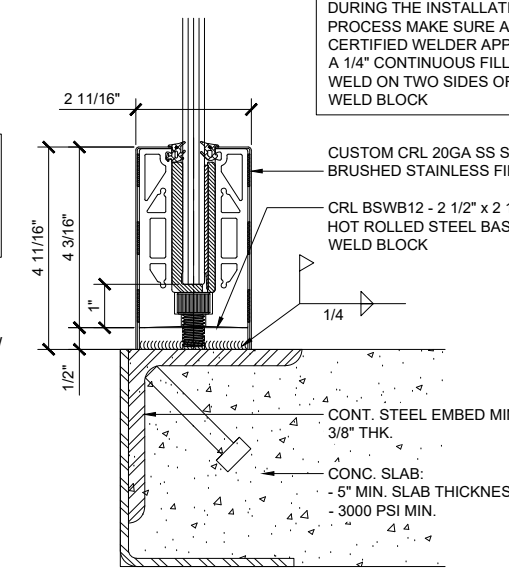
SURFACE MOUNT DETAIL CONCRETE SUBSTRATE

ANCHOR SPACING WILL DEPEND ON MOUNTING SUBSTRATE AND REGION OF PROJECT



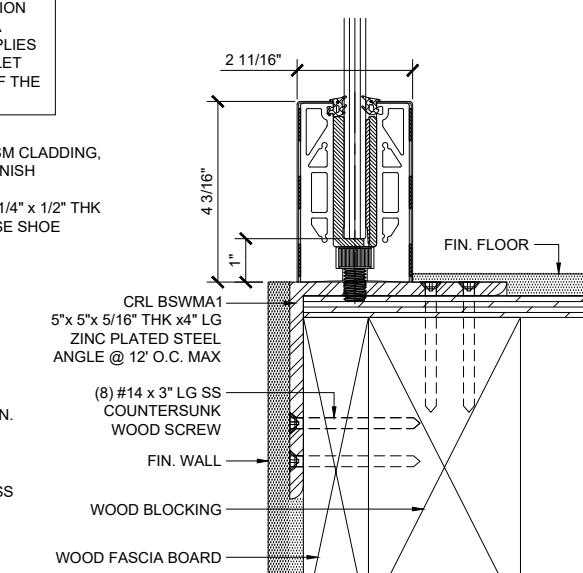
SURFACE MOUNT DETAIL STEEL SUBSTRATE

12" ON CENTER ANCHOR SPACING



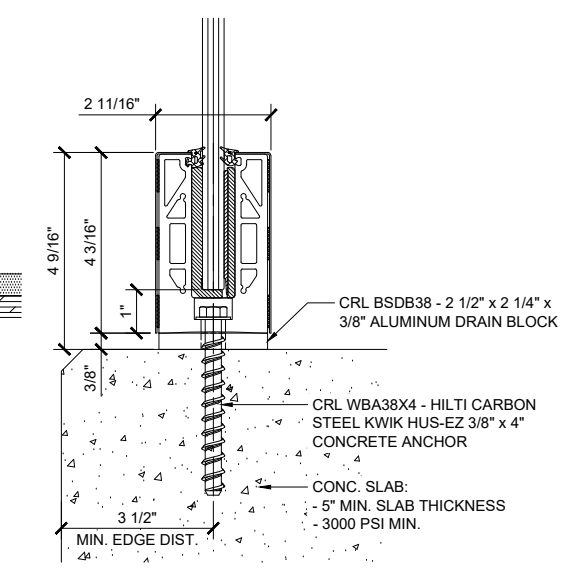
SURFACE MOUNT DETAIL STEEL SUBSTRATE W/ WELD BLOCK

12" ON CENTER ANCHOR SPACING



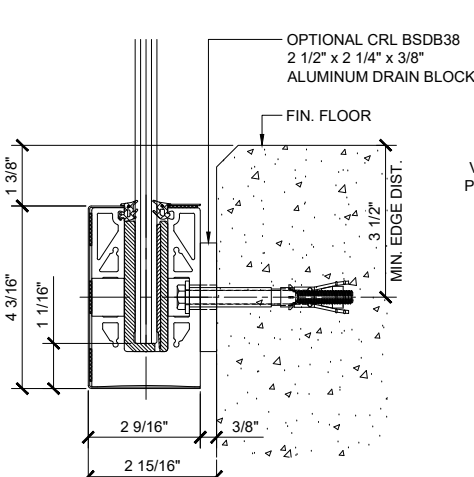
SURFACE MOUNT DETAIL WOOD SUBSTRATE

12" ON CENTER ANCHOR SPACING



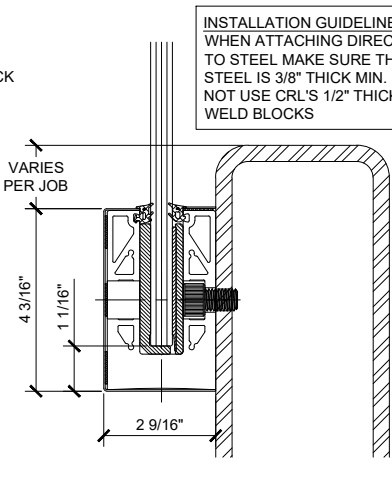
SURFACE MOUNT DETAIL CONCRETE SUBSTRATE W/ DRAIN BLOCK

ANCHOR SPACING WILL DEPEND ON MOUNTING SUBSTRATE AND REGION OF PROJECT



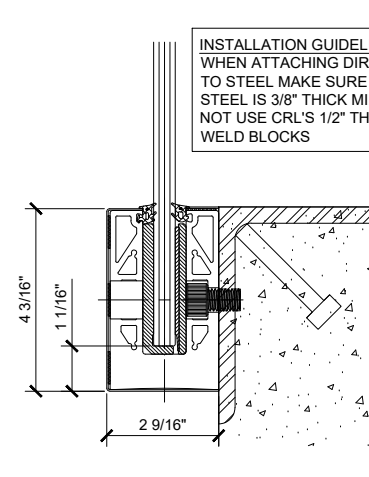
FASCIA MOUNT DETAIL CONCRETE SUBSTRATE

ANCHOR SPACING WILL DEPEND ON MOUNTING SUBSTRATE AND REGION OF PROJECT



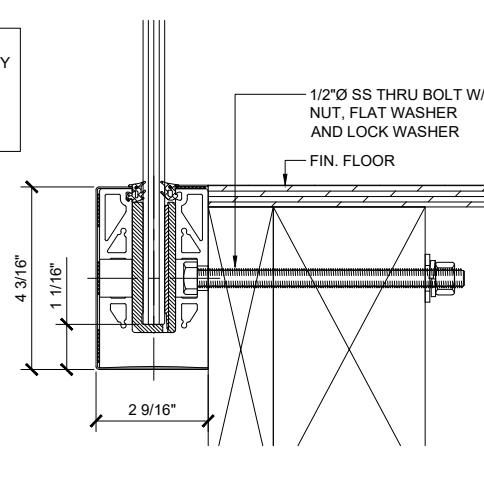
FASCIA MOUNT DETAIL STEEL SUBSTRATE

12" ON CENTER ANCHOR SPACING



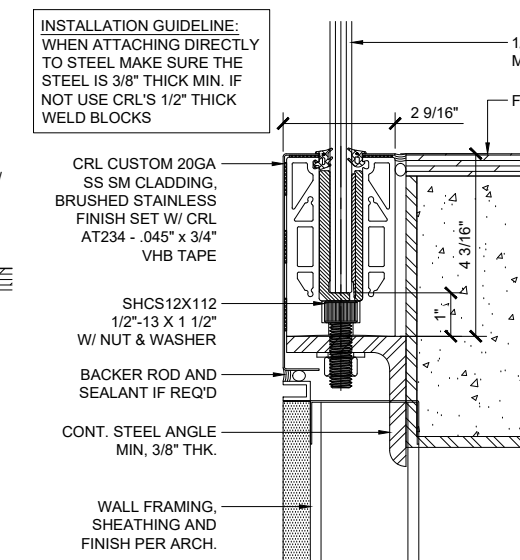
FASCIA MOUNT DETAIL STEEL SUBSTRATE

12" ON CENTER ANCHOR SPACING



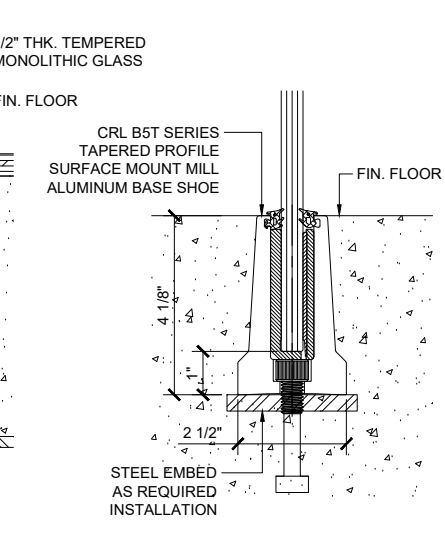
FASCIA MOUNT DETAIL WOOD SUBSTRATE

ANCHOR SPACING WILL DEPEND ON MOUNTING SUBSTRATE AND REGION OF PROJECT



SURFACE MOUNT DETAIL STEEL SUBSTRATE W/ CUSTOM CLADDING

12" ON CENTER ANCHOR SPACING



EMBED MOUNT CONCRETE SUBSTRATE

ANCHOR SPACING WILL DEPEND ON MOUNTING SUBSTRATE AND REGION OF PROJECT

Revisions By:		
△	-	-
△	06/28/21	AB
△	06/05/18	VM
△	08/12/16	JG
△	02/08/16	JG

CRL
A CRH COMPANY

2503 E. Vernon Avenue, Los Angeles, CA 90058-1897
PH: (800) 421-6144 FX: 800-597-7501 www.crlaurena.com

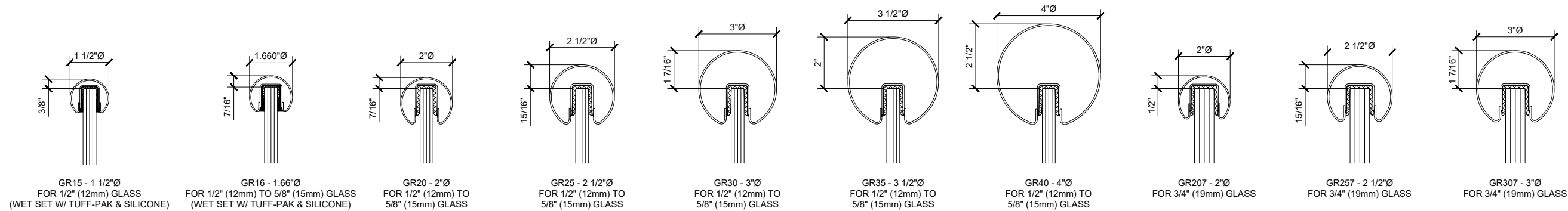
ICG **ES** ESR-3269

Description:
GRS
GLASS RAILING SYSTEM
FOR TEMPERED MONOLITHIC
1/2", 5/8" & 3/4" THK. GLASS

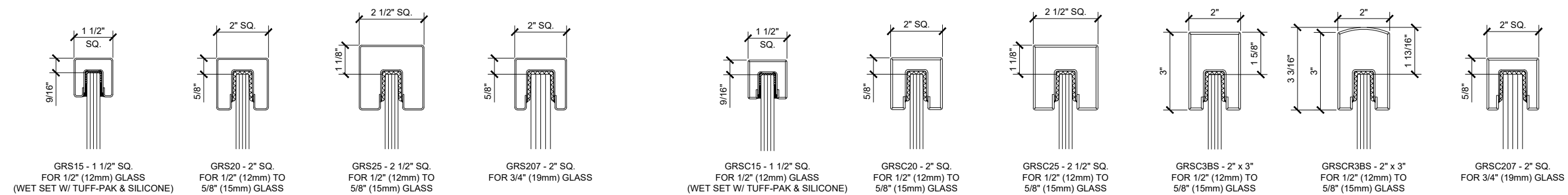
ELEVATIONS AND DETAILS
SURFACE MOUNT AND
FASCIA MOUNT OPTIONS

Drawn By: JG
Date: 12/15/2015
Scale: AS NOTED
File Name:
CRL GRS Monolithic Glass Railing System.dwg

Sheet

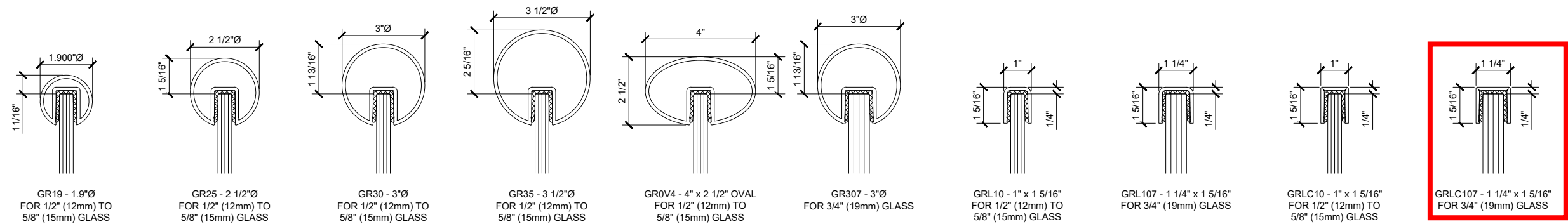


BUMP-FORMED & WELDED PREMIUM RADIUS PROFILE CAP RAIL



BUMP-FORMED & WELDED PREMIUM SQUARE PROFILE CAP RAIL

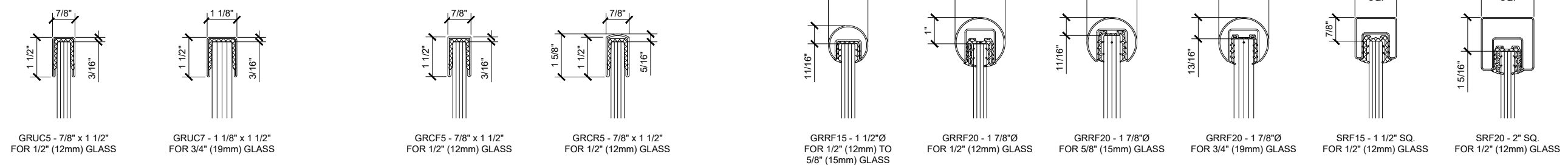
SQUARE PROFILE CRISP CORNER CAP RAIL



EXTRUDED ALUMINUM CAP RAIL

LOW PROFILE 11 GAUGE CAP RAIL

LOW PROFILE 11 GAUGE CRISP CORNER CAP RAIL



U-CHANNEL 18 GAUGE CAP RAIL

U-CHANNEL 18 GAUGE CRISP CORNER CAP RAIL

ROLL-FORMED CAP RAIL

Revisions By:		
△	-	-
△	06/28/21	AB
△	06/05/18	VM
△	08/12/16	JG
△	02/08/16	JG

CRL
A CRH COMPANY

2503 E. Vernon Avenue, Los Angeles, CA 90058-1887
PH: (800)-421-6144 FX: 800-597-7501 www.crlaurena.com

ICG **ES** ESR-3269

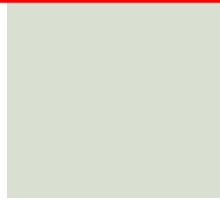
Description: **GRS**
GLASS RAILING SYSTEM
FOR TEMPERED MONOLITHIC
1/2", 5/8" & 3/4" THK. GLASS

CAP RAIL OPTIONS

Drawn By: JG
Date: 12/15/2015
Scale: AS NOTED
File Name:
CRL GRS Monolithic Glass Railing System.dwg

Sheet

PRIMARY METAL COLOR FOR BUILDING (METAL PANELS AND WINDOW FRAMING)



BNT Bone White
4-BNT-30
LRV 78.50/SRI 82-Cool



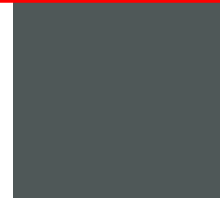
CRT Oyster
4-CRT-30
LRV 72.46/SRI 82-Cool



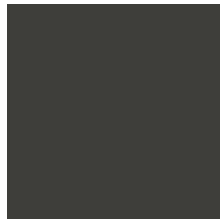
MST Mist White
4-MST-30
LRV 69.96/SRI 75-Cool



AGT Aluminum Grey
4-AGT-30
LRV 31.60/SRI 26



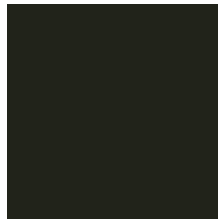
BGY Grey
4-BGY-50
LRV 10.41/SRI 7



CNC Charcoal
3-CNC-30
LRV 4.20
3&4mm



JBR Bronze
4-JBR-30
LRV 3.34/SRI 2

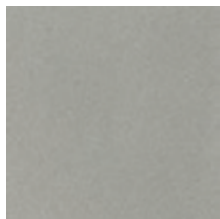


TOB Black
4-TOB-15
LRV 1.01/SRI 0

Order samples at
www.alpolic-america.com/samples

ALPOLIC®

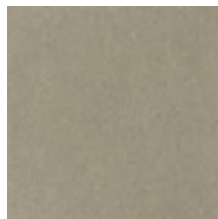
MICA



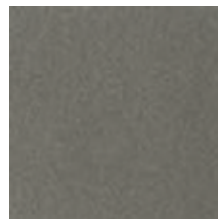
OPT Mica Platinum
4-OPT-50
LRV 30.88/SRI 53-Cool



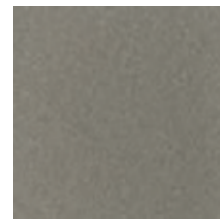
MNC Mica Anodic Clear
4-MNC-30
LRV 34.43/SRI 56-Cool



MCU Mica Champagne
4-MCU-30
LRV 22.61/SRI 38-Cool



MZG Mica Grey
4-MZG-50
LRV 7.95/SRI 14

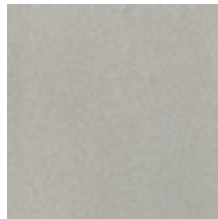


MFS Mica Grey
4-MFS-30
LRV 13.41

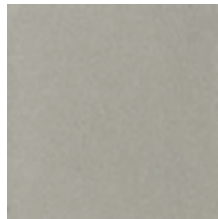
METALLIC



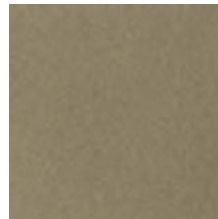
BSX Metallic Silver
4-BSX-30
LRV 30.94/SRI 71-Cool



SMX Metallic Silver
4-SMX-30
LRV 36.59/SRI 63-Cool



CMX Metallic Champagne
4-CMX-30
LRV 31.19/SRI 59-Cool



MBX Metallic Bronze
4-MBX-30
LRV 31.20/SRI 40-Cool



DCX Metallic Copper
4-DCX-30
LRV 15.09/SRI 47-Cool

Premium Architectural Stock Finishes

Call ALPOLIC® Customer Service for Warranty Details 800.422.7270

NATURAL METALS



Stainless
4-4HL
LRV 21.84/SRI 34-Cool



Quartz Zinc
4-AZZ
LRV 21.51/SRI 0



Copper
4-C12
LRV 5.03/SRI 55-Cool

ANODIZED



Clear
4-CLR
LRV 34.31/SRI 84-Cool

ROOF SCREEN METAL PANELS



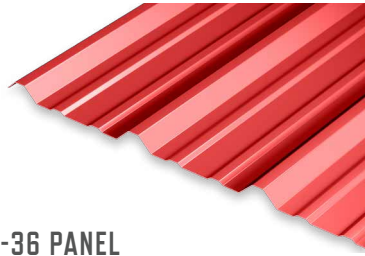
PAC-CLAD®

P E T E R S E N

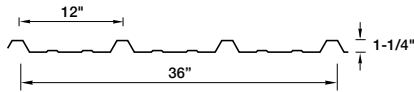
A **CARLISLE** COMPANY

Architectural Metal

Custom Fabrication, Curtainwall,
Storefront and Wall Applications

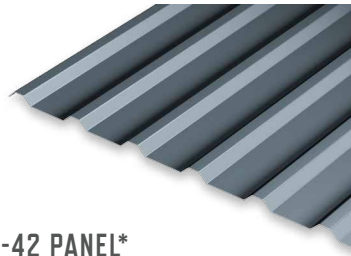


R-36 PANEL

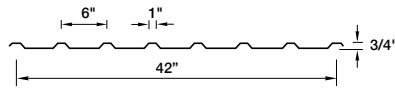


MATERIALS

.032 aluminum	24 gauge steel
.040 aluminum	22 gauge steel
.050 aluminum	

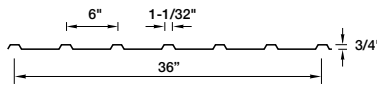


M-42 PANEL*



Note: Made only in Tyler, Texas facility

M-36 PANEL*

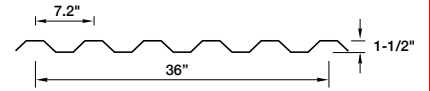


MATERIALS

.032 aluminum	24 gauge steel
.040 aluminum	22 gauge steel
.050 aluminum	



7.2 PANEL

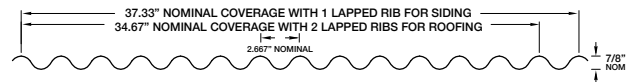


MATERIALS

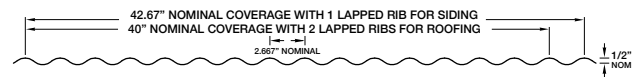
.032 aluminum	24 gauge steel
.040 aluminum	22 gauge steel
.050 aluminum	



7/8" CORRUGATED



1/2" CORRUGATED



*Note: The M-36 and M-42 panels are not intended for use in the construction of metal buildings or structural roof applications. Please consult with Petersen regarding the application of this panel.

A complete specification is available online at pac-clad.com.

Photo at left:
Hurricane Dockside Grill, Hagerstown, MD
Contractor: Heidler Roofing
Photo: David Fonda
Profile: R-36 panel
Color: Cardinal Red

PAC-CLAD® COLOR CHART

TRIM

PAC-CLAD products are available in prime quality aluminum (.032 - .063), 24 and 22 gauge Galvalume steel, finished with a 70% PVDF finish on the top side, with a washcoat on the bottom. Other metals available include mill finish aluminum, stainless steel, Galvalume Plus and anodized aluminum.

A strippable vinyl film can be applied to coil, flat sheet or fabricated parts to protect painted surfaces. Vinyl masking is recommended where extra handling is expected. NOTE: Vinyl film must be removed immediately after installation.

FINISH WARRANTY

Life expectancy is 30 years-plus on 70% PVDF-finished materials. A 30-year, non-prorated finish warranty covering color fade, chalking and film integrity is available at no extra charge. Warranty for Weathered Steel and Weathered Copper does not cover fade. Warranty for Cardinal Red and Award Blue is 10 years for fade and 20 years for chalking and adhesion.

PREMIUM COLORS

Petersen's premium colors include several metallic finishes, plus two two-coat Weathered Steel and Weathered Copper finishes. These colors are ideal for all building envelope applications. A PAC-CLAD 30-year, non-prorated finish warranty applies.

COMMITMENT TO SUSTAINABILITY

PAC-CLAD products provide unmatched aesthetics and performance, plus an element of sustainability. Where possible, Petersen products include a high percentage of recycled material, which lowers their environmental footprint. Additionally, PAC products are 100% recyclable which may reduce the stream of solid waste to landfills.

Petersen also offers the industry's widest range of 46 standard colors, most of which feature outstanding SRI (Solar Reflectance Index) values for improved cooling and energy savings performance. Petersen offers 35 finishes that are rated by the Cool Roof Ratings Council and 31 colors that are Energy Star®-approved. In addition, 35 PAC-CLAD finishes have an SRI of 29 or higher for steep slope roofs, to allow a building to qualify for credits in the U.S. Green Building Council's Leadership in Energy and Environmental Design (LEED) Green Building Rating System.

SHERWIN-WILLIAMS.
Coil Coatings

Petersen Aluminum has been a proud partner with Sherwin-Williams Coil Coatings since 1972

NOTE: Colors below are not exact representations of actual PAC-CLAD colors. Ask a PAC representative for a color-chip chart or painted metal samples before making final color selection.

STANDARD COLORS

Patina Green*	Teal*	Hemlock Green*	Forest Green	Dark Bronze*	Midnight Bronze	Mansard Brown*
Arcadia Green*	Hartford Green	Evergreen*	Hunter Green*	Burnished Slate*	Aged Bronze*	Burgundy
Military Blue*	Berkshire Blue	Pacific Blue* (fka Slate Blue)	Medium Bronze*	Terra Cotta*	Colonial Red*	Cardinal Red*
Interstate Blue	Award Blue	Charcoal*	Cityscape*	Sandstone*	Granite*	Sierra Tan*
Black Aluminum	Graphite*	Musket Gray*	Slate Gray*	Bone White*	Stone White*	Almond*
Matte Black						

* Denotes PAC-CLAD Cool Color

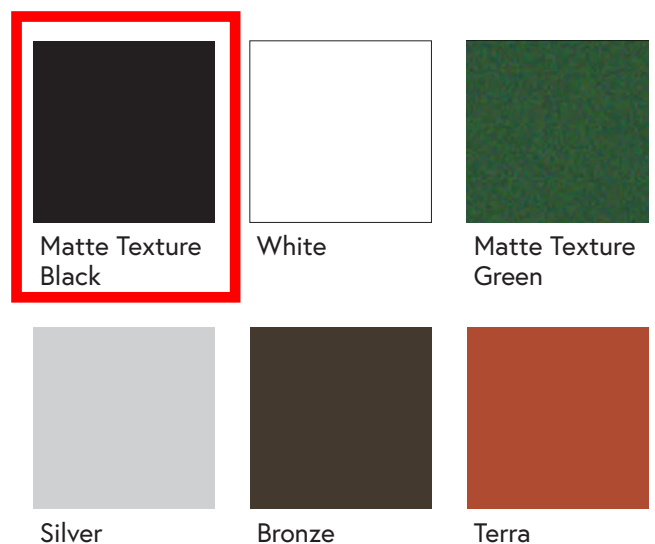
PREMIUM COLORS

Anodic Clear*	Silversmith*
Silver*	Champagne*
Weathered Zinc*	Zinc*
Copper Penny*	Aged Copper*
Weathered Copper	Weathered Steel



Color Chart

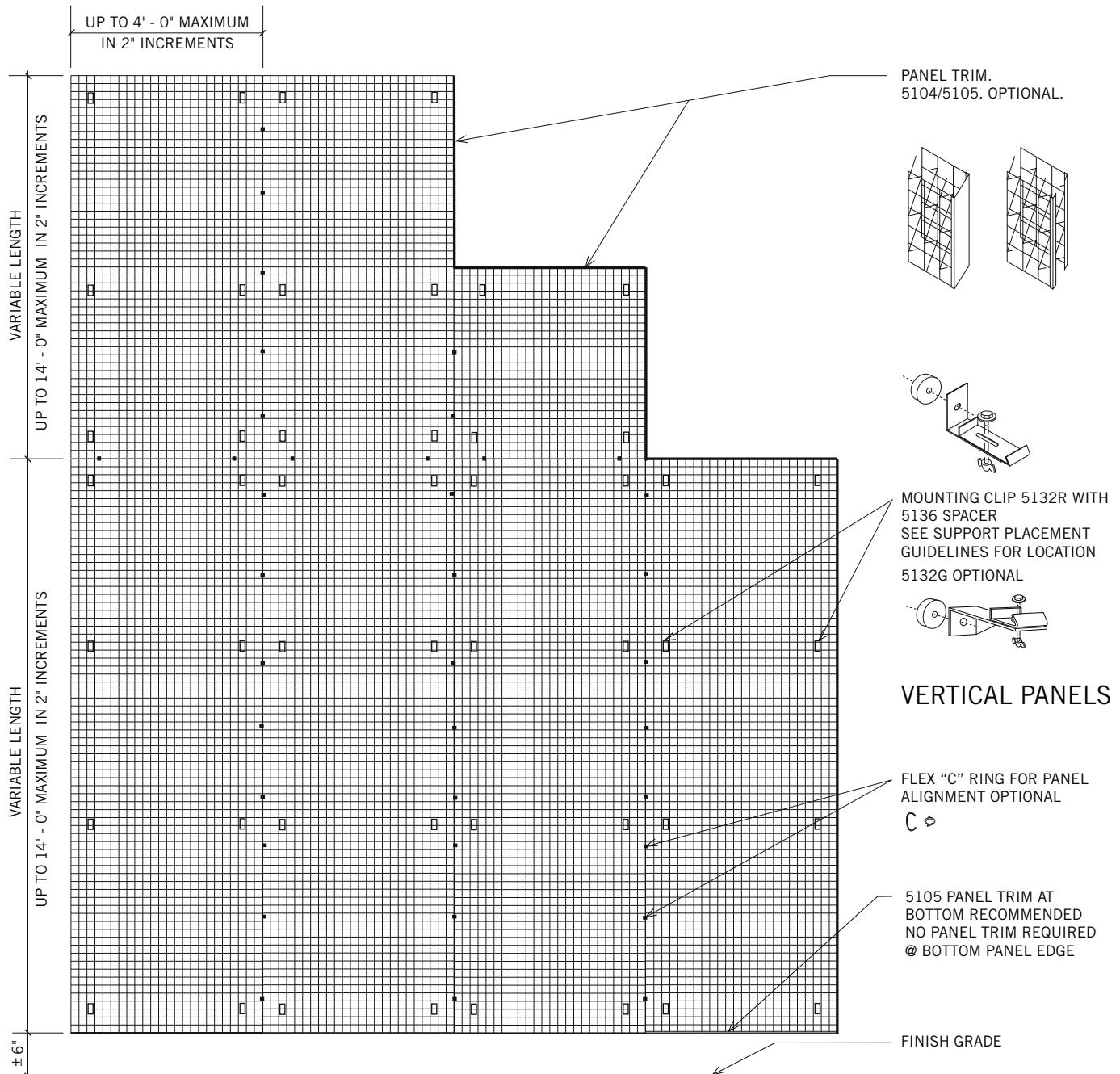
greenscreen® offers six standard colors as well as custom colors. All attachments, posts and custom accessories can be colored to match. Note that color rendering can shift depending on your monitor calibration and viewing conditions. For an exact representation of these colors, sample color chips are available upon request. Visit greenscreen.com/contact/catalog-samples/.



mounting options

Wall Mounted

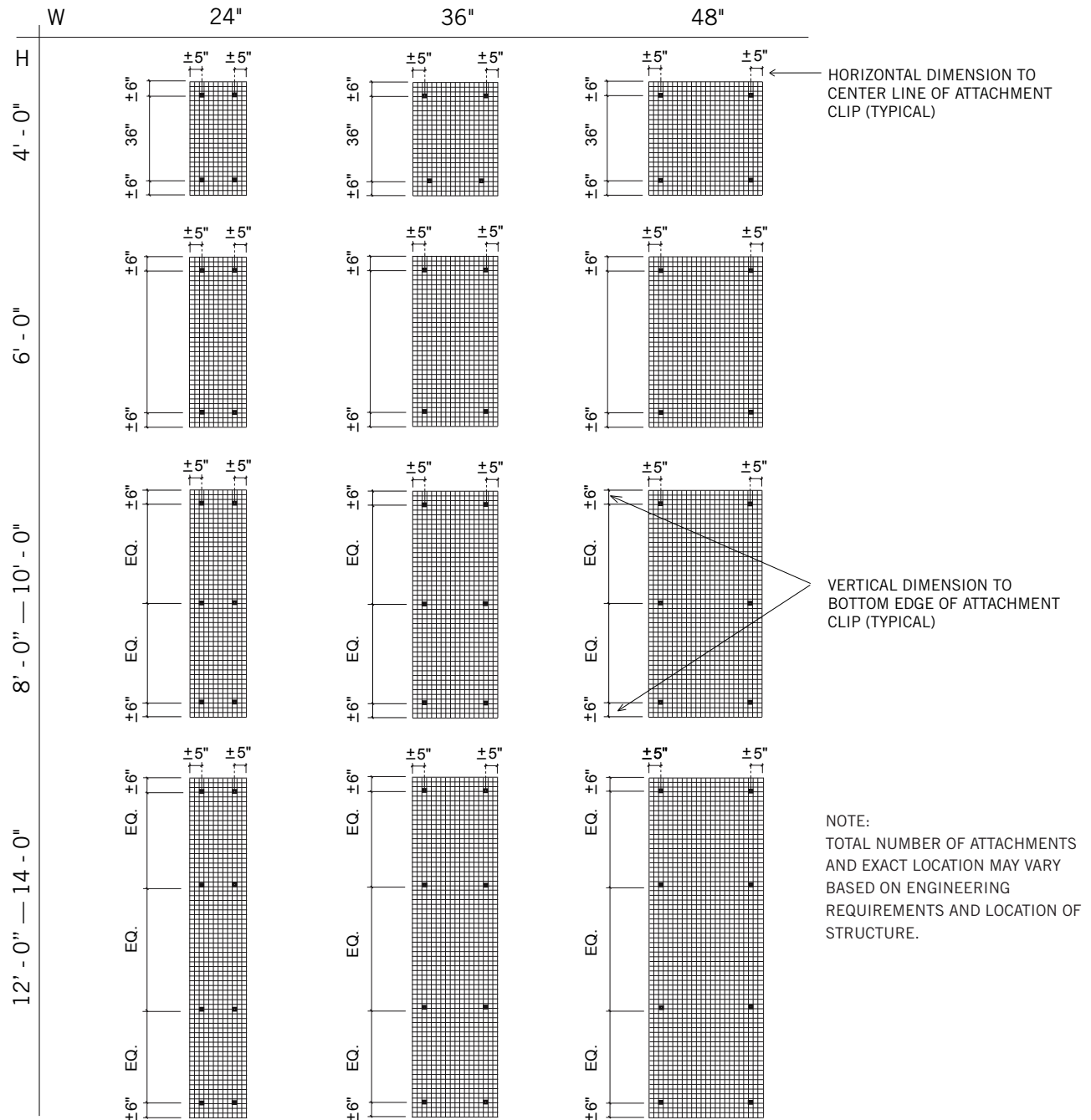
This example showing multiple modular panels in a wall hung application references typical trims and clips from our Accessory Items list. Combine custom screen sizes and profiles for your own unique **greenscreen®**.

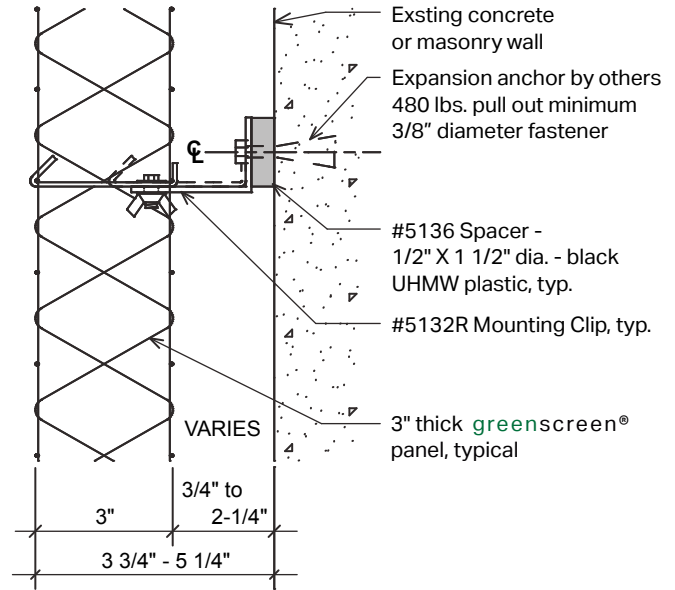
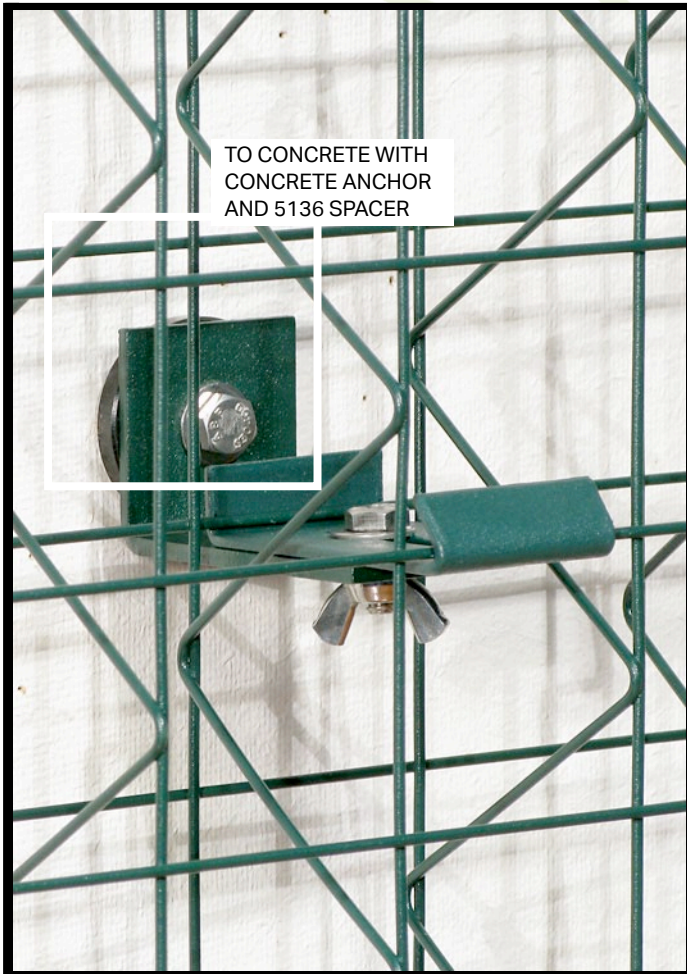


mounting options

Support Placement

Use this guide as general recommendations for support placement with multiple modular panels in a wall hung application. Consult the Accessory Items list for descriptions of available engineered attachment clips, trims, spacers, and straps for your specific panel attachments.

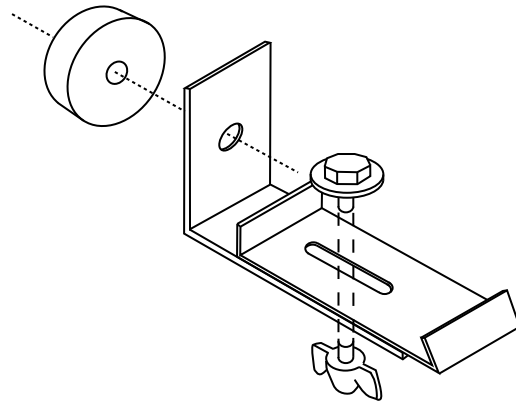




SECTION

5132R ADJUSTABLE CLIP

The 5132R Adjustable Clip provides panel support for both download and uplift. The clip can mount to wall surfaces or to a steel frame. The slot allows for panel adjustment and ease of installation.

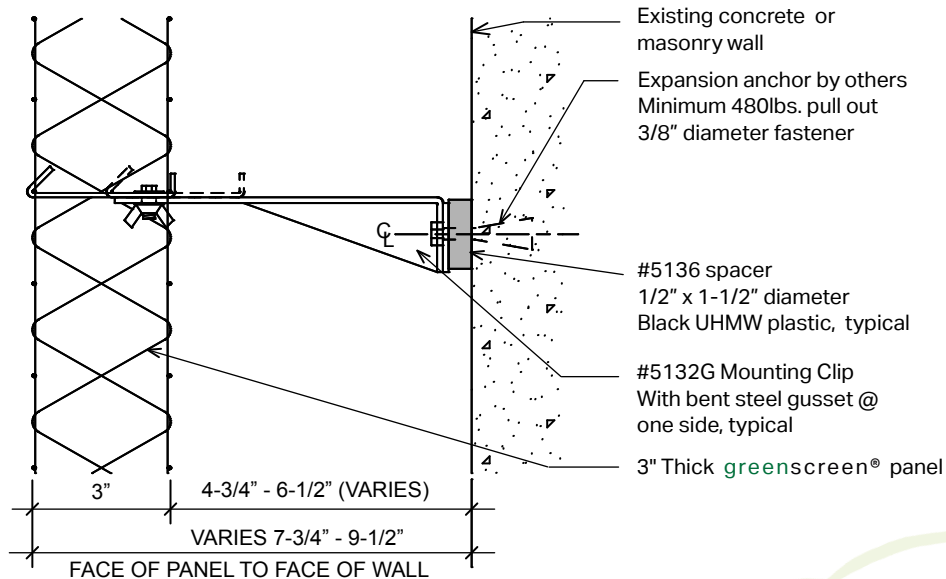
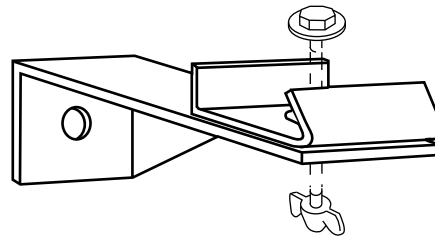


greenscreen®



5132G ADJUSTABLE CLIP

The 5132G Adjustable Clip provides panel support for both download and uplift. The clip can mount to wall surfaces or to a steel frame. The slot allows for panel adjustment and ease of installation. Maximum bracket extension is 9-1/2" to outside of panel.



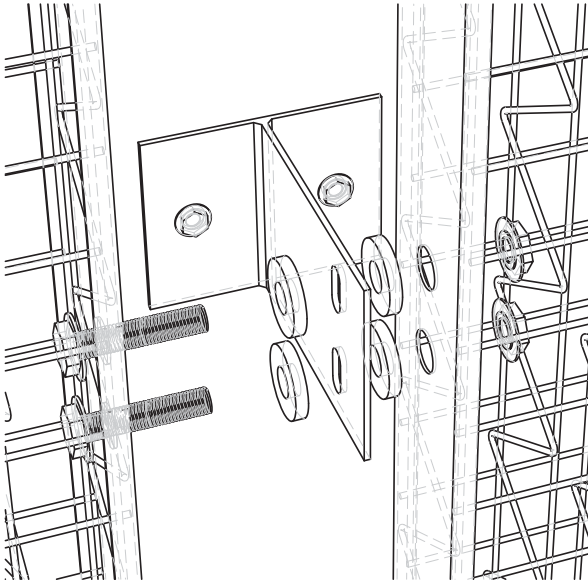
SECTION



greenscreen®

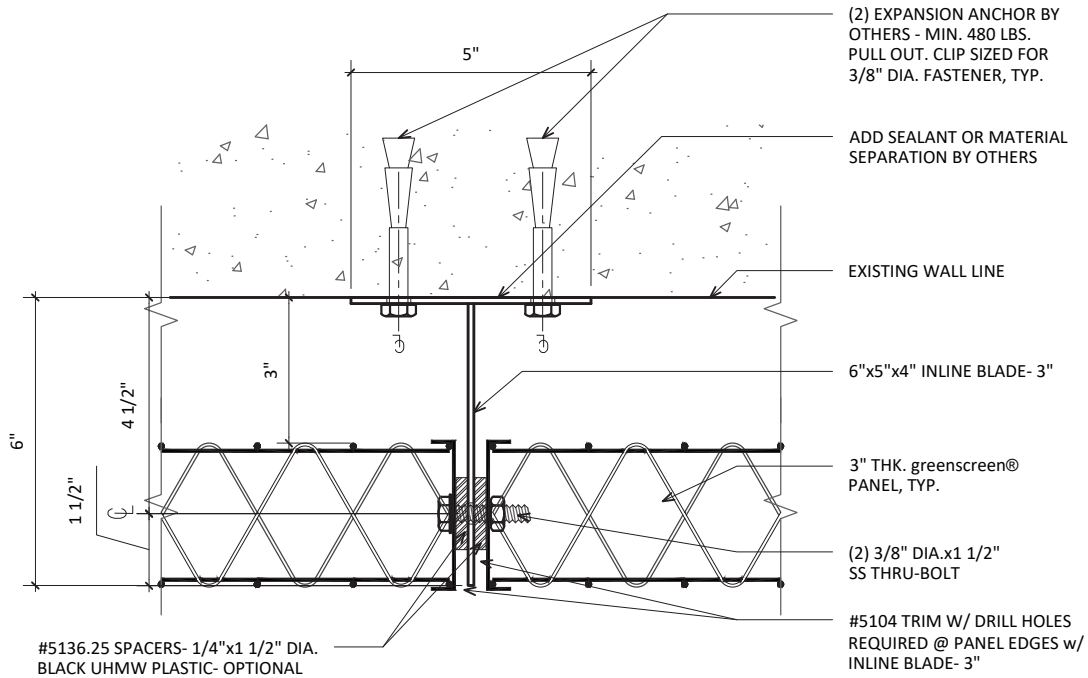


greenscreen®

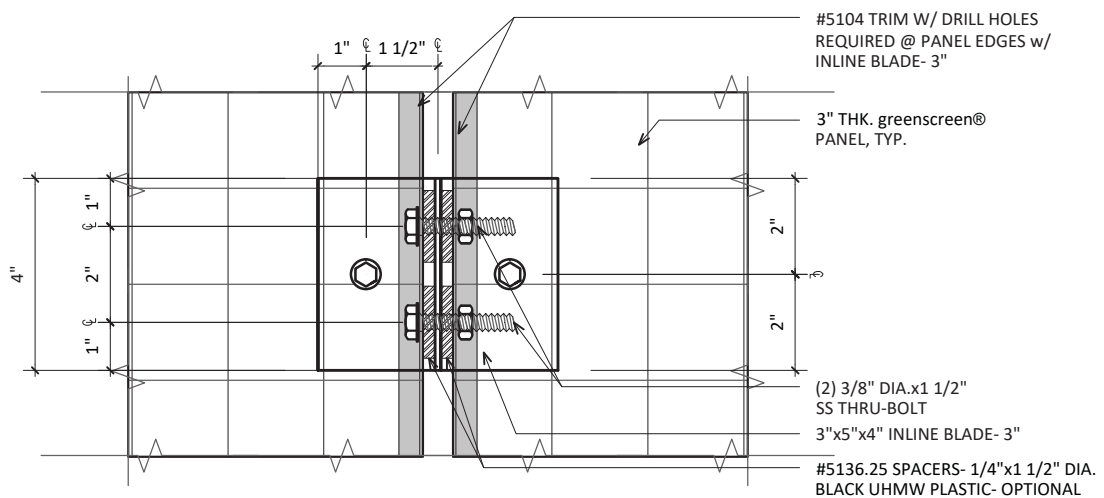


INLINE BLADE CLIP

Provide support for both download and uplift. It can be mounted to wall surfaces or to a steel frame. Standard size in 6" in length. The slot allows for panel vertical adjustment and ease of installation. Also available in 3" & 9".



PLAN



ELEVATION

accessories

Our Accessory Items list will provide your project with the necessary edge trims, mounting and joining clips, straps, posts, and caps to match your specified finishes with maximum flexibility.

Size:

½" leg x 3⅛" wide x ½" leg

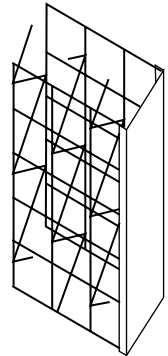
Materials:

20 gauge galvanized steel

Colors:

- ~ green
- ~ black
- ~ silver
- ~ bronze
- ~ white

Used as a closure strip at edges of **greenscreen®** panels. Recommended on panel edges adjacent to pedestrian traffic or where edge reinforcement for plant maintenance is desired. Not recommended at bottom edge of panel to prevent pooling of water.

**5104****Steel Channel Trim****Size:**

½" leg x ½" leg

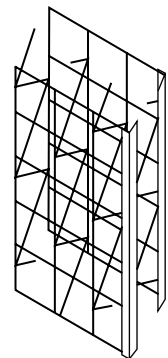
Materials:

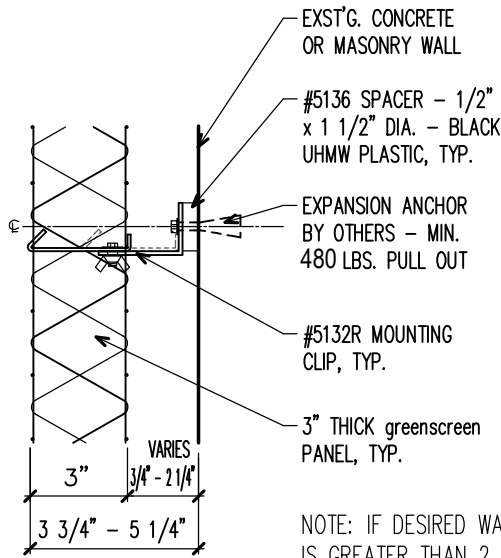
20 gauge galvanized steel

Colors:

- ~ green
- ~ black
- ~ silver
- ~ bronze
- ~ white

Used as closure strip at edges of **greenscreen®** panels. Recommended on panel edges adjacent to pedestrian traffic or where edge reinforcement for plant maintenance is desired.

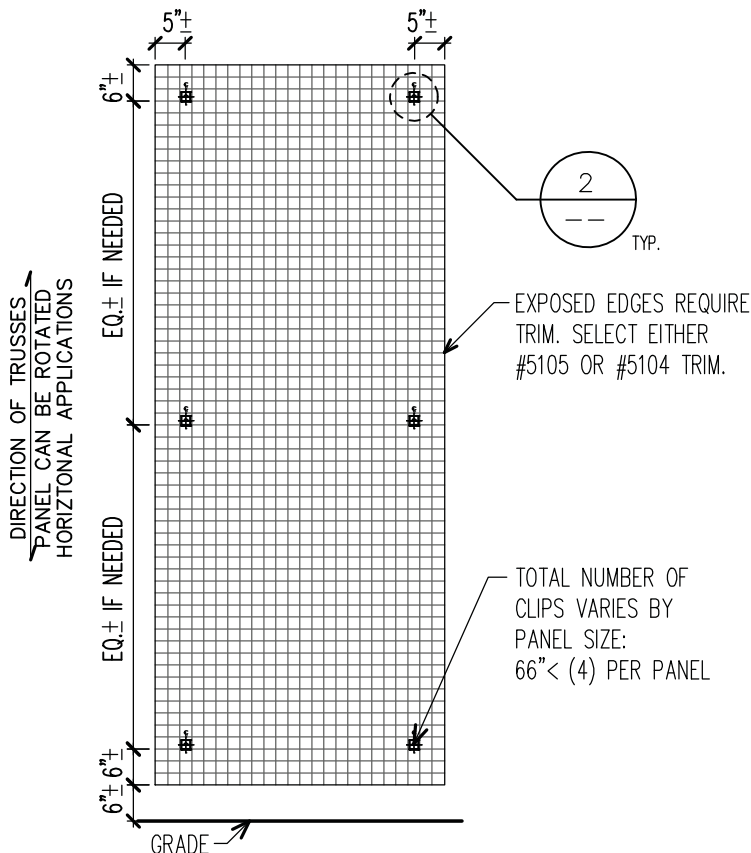
**5105****Steel Edge Trim**



#5132R MOUNTING CLIP WALL MOUNTED – SECTION

2

SCALE = 2": 1'-0"



ELEVATION

1

SCALE = 3/8": 1'-0"

WALL MOUNTING INSTRUCTIONS:

STEP 1:

USING A LEVEL, TEMPORARILY HOLD THE PANEL IN PLACE AND MARK THE CORNER LOCATIONS ON THE WALL.

STEP 2:

HOLDING THE MOUNTING CLIPS AT THE DESIRED LOCATION ON THE PANEL, MEASURE THE EXACT DISTANCE OF THE SCREW HOLES TO THE CORNERS. USING YOUR CORNER MARKS FROM STEP #1, CARRY OVER THE NEW DIMENSIONS AND REFERENCE THE SCREW HOLE LOCATIONS ON YOUR WALL.

STEP 3:

DEPENDING ON THE SUBSTRATE, PRE-DRILL HOLES FOR MOUNTING CLIPS. FOR CONCRETE AND MASONRY WALLS, SET EXPANSION ANCHORS, AND THEN MOUNT CLIPS TO WALL. ANCHORS SHOULD HAVE A 550LB. MIN. PULL-OUT VALUE.

STEP 4:

HANG THE greenscreen® PANEL ON THE CLIPS.

STEP 5:

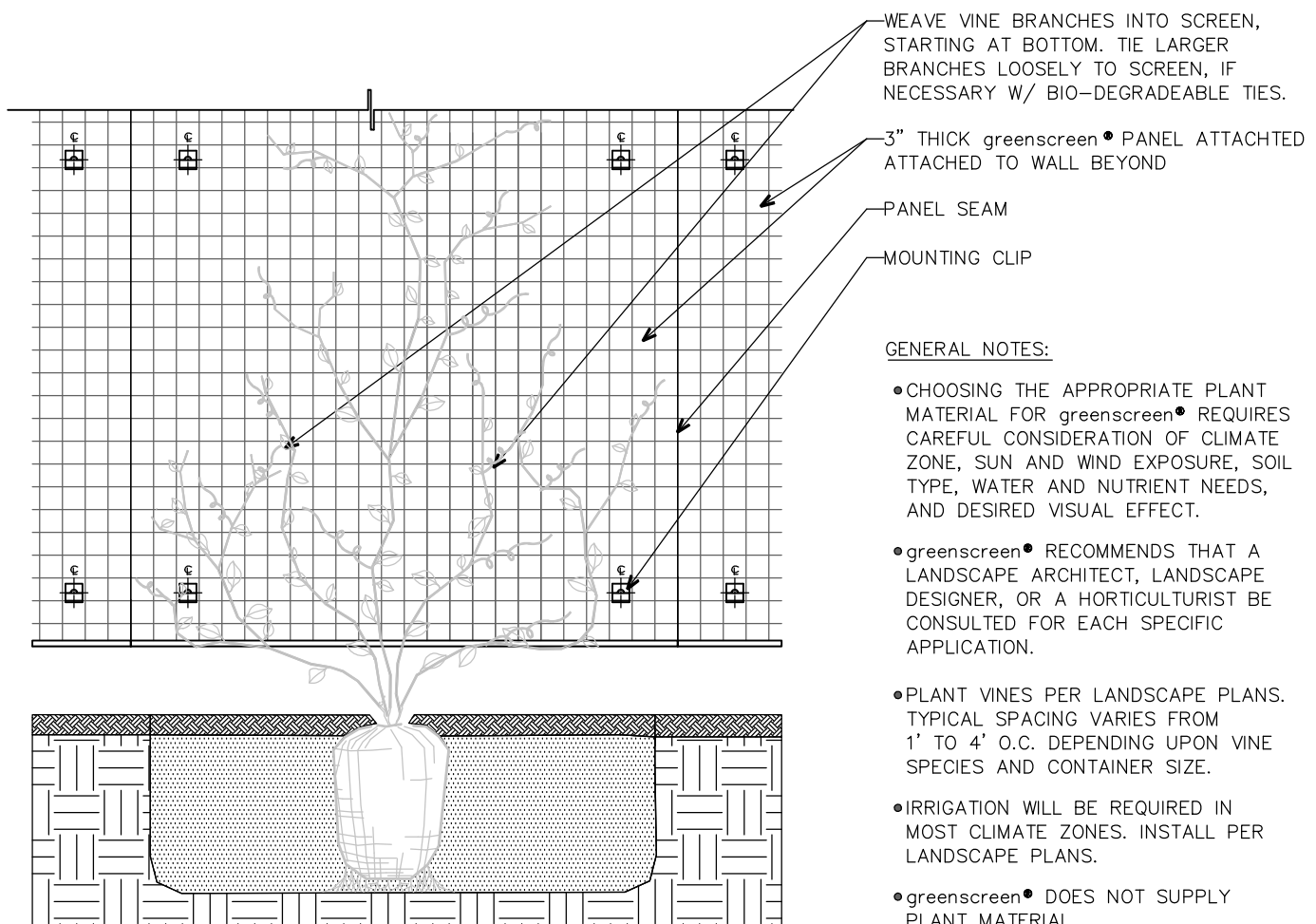
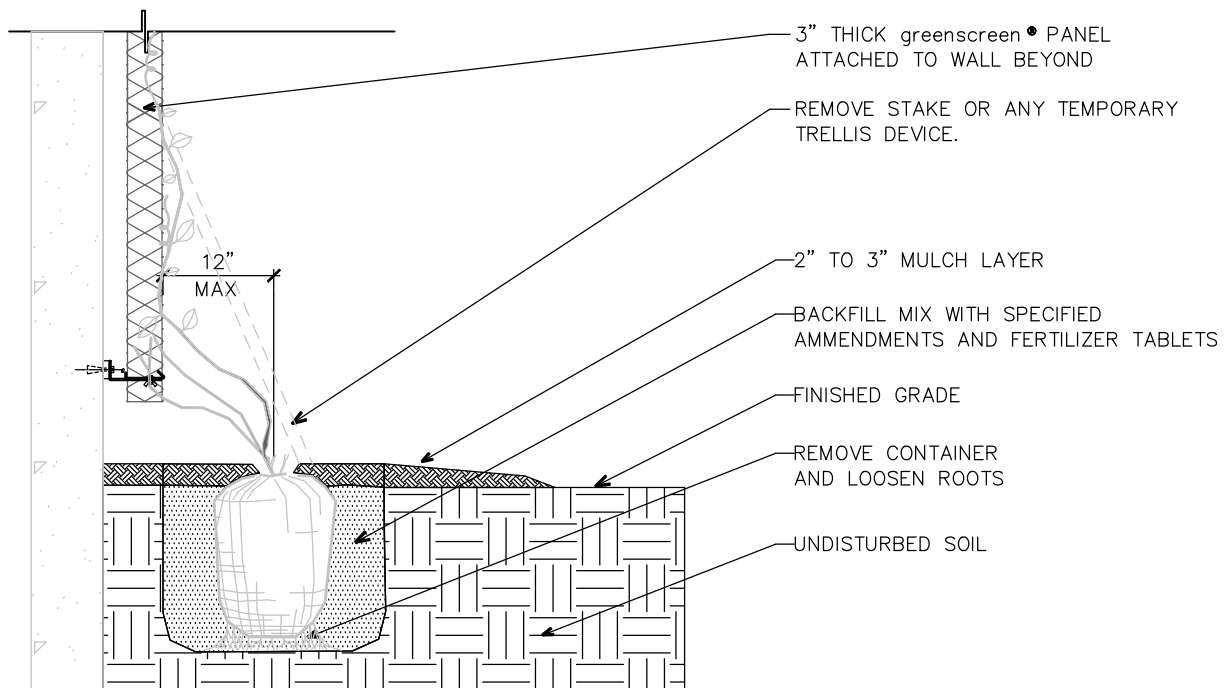
REPEAT STEPS 1-4 AS NEEDED. PRE-INSTALLING ALL CLIPS IS NOT RECOMMENDED DUE TO PANEL GROWTH. PANEL SIZES ARE NOMINAL – ACTUAL PANEL SIZE MAY VARY +1/8" IN WIDTH AND LENGTH. ADD +1/16" PER EDGE OF TRIM.

STEP 6:

REFER TO greenscreen® "VINE PLANTING DETAIL" FOR VINE ATTACHMENT AND PLANTING GUIDELINES.

RECOMMENDATIONS:

- MOUNT PANELS 6" ABOVE FINISHED GRADE, OR PER SHOP DRAWINGS.
- ON STUCCO WALLS, ADJUST CLIP LOCATIONS SO THAT ALL CLIPS SCREW DIRECTLY INTO FRAMING MEMBERS OF THE WALL.
- WEAR GLOVES WHEN HANDLING greenscreen® PANELS.
- greenscreen® DOES NOT RECOMMEND CUTTING PANELS IN THE FIELD. IF IT IS NECESSARY, HOWEVER, USE TOUCH-UP PAINT.



GENERAL NOTES:

- CHOOSING THE APPROPRIATE PLANT MATERIAL FOR greenscreen® REQUIRES CAREFUL CONSIDERATION OF CLIMATE ZONE, SUN AND WIND EXPOSURE, SOIL TYPE, WATER AND NUTRIENT NEEDS, AND DESIRED VISUAL EFFECT.
- greenscreen® RECOMMENDS THAT A LANDSCAPE ARCHITECT, LANDSCAPE DESIGNER, OR A HORTICULTURIST BE CONSULTED FOR EACH SPECIFIC APPLICATION.
- PLANT VINES PER LANDSCAPE PLANS. TYPICAL SPACING VARIES FROM 1' TO 4' O.C. DEPENDING UPON VINE SPECIES AND CONTAINER SIZE.
- IRRIGATION WILL BE REQUIRED IN MOST CLIMATE ZONES. INSTALL PER LANDSCAPE PLANS.
- greenscreen® DOES NOT SUPPLY PLANT MATERIAL.

greenscreen® VINE PLANTING DETAIL

SECTION AND ELEVATION — TYPICAL FOR WALL MOUNTED APPLICATION
DETAIL SIMILAR FOR POST MOUNTED PANELS.

SCALE = 3/4": 1'-0"