

Fiscal Year 2019 Maintenance Items



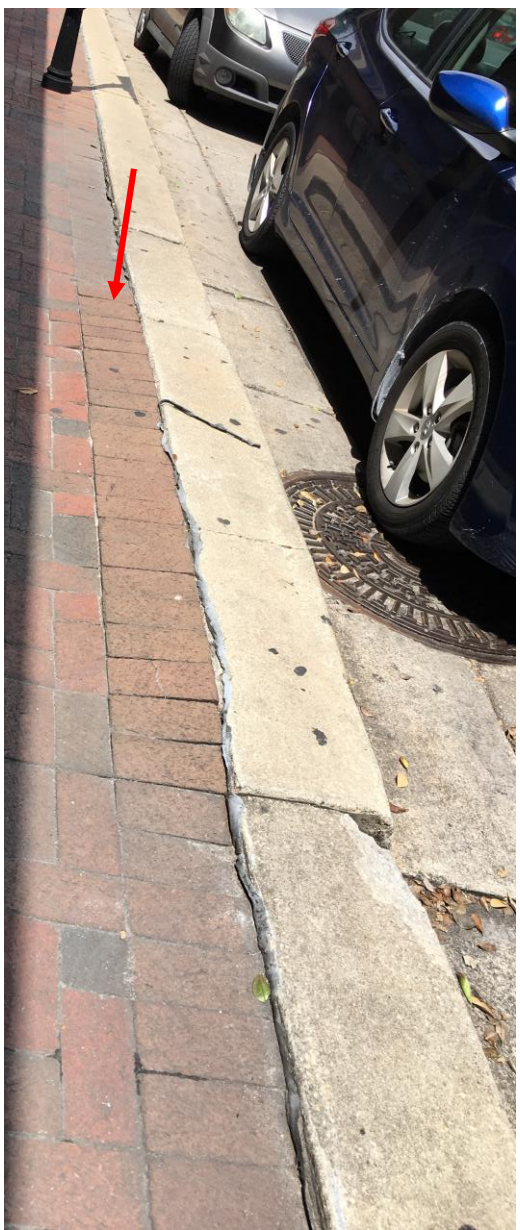


Palafox Place

Paver Repairs:

Garden to Romana St





Conditions: Major pavement buckling and lifting along segment length.







MLK Plaza

Paver Repairs &
General Maintenance

Garden to Wright St





Conditions: Paver lifting, trees/landscape in poor condition





Baylen Promenade

Promenade Repairs

At Southern Terminus
of Baylen Street





Conditions: Promenade sinking, corrosion, pavers lifting, landscape in poor condition





Seville Square

Landscaping &
General Maintenance





Conditions: Landscape in poor condition, paver lifting, electrical box repairs, gazebo maintenance needed (power washing/paint)







Alcaniz & Romana

**Paver Repairs &
Bench Maintenance**





Conditions: Paver lifting, benches require power washing/paint.







Spring Street

Landscaping and
General Maintenance





Conditions: Landscape in poor condition, irrigation lines exposed, power washing needed.



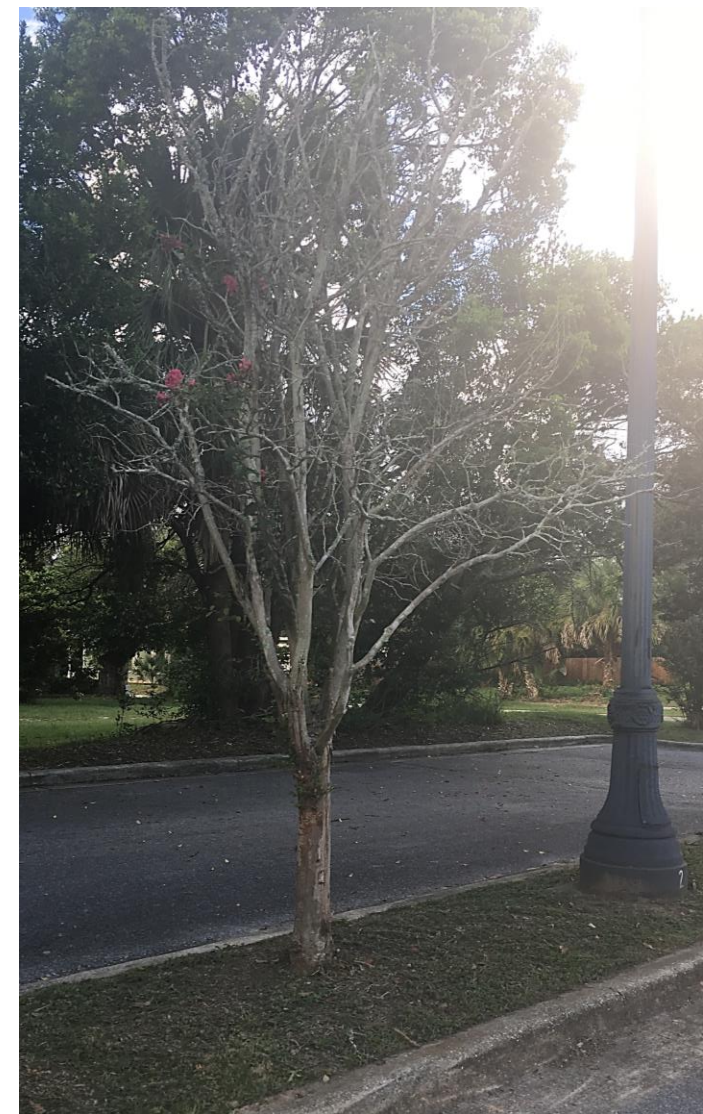


Coyle St. Parking Lot

Parking Lot
Resurfacing and
Landscape
Improvements

Belmont DeVilliers
Commercial Core





Conditions: Aging pavement (approx. 20 years), landscape in poor condition.

