



City of
Pensacola
America's First Settlement
And Most Historic City

Architectural Review Board Application
Full Board Review

Application Date: _____

Project Address: COVINGTON TOWNHOME BUILDING(F) 15, 17 & 19 WEST STRONG ST.

Applicant: JAMES C. BOZEMAN TODAY HOMES FOR CHARLES LIBERIS

Applicant's Address: 101 SOUTH ALCAÑIZ PENSACOLA, FL 32504

Email: TDY HOMES @ BELLSOUTH.NET **Phone:** 850-432-3522

Property Owner: CHARLES LIBERIS
(If different from Applicant)

District: PHD ☐ NHPD ☒ OEHPD ☐ PHBD ☐ GCD ☐

Application is hereby made for the project as described herein:

- ☐ Residential Homestead – \$50.00 hearing fee
☐ Commercial/Other Residential – \$250.00 hearing fee

* An application shall be scheduled to be heard once all required materials have been submitted and it is deemed complete by the Secretary to the Board. You will need to include fourteen (14) copies of the required information. Please see pages 3 – 4 of this application for further instruction and information.

Project specifics/description:

WE ARE SEEKING APPROVAL OF CHANGES TO COVINGTON TOWNHOME BUILDING(F) 15, 17 & 19 WEST STRONG ST. PENSACOLA, FL.

I, the undersigned applicant, understand that payment of these fees does not entitle me to approval and that no refund of these fees will be made. I have reviewed the applicable zoning requirements and understand that I must be present on the date of the Architectural Review Board meeting.

James C. Bozeman
Applicant Signature

3-16-2020
Date

Planning Services
222 W. Main Street * Pensacola, Florida 32502
(850) 435-1670
Mail to: P.O. Box 12910 * Pensacola, Florida 32521



Jim Bozeman <tdyhomesnwfl@gmail.com>

Covington Place Architectural Drawings

2 messages

Charles Kunze <chuck@artisansarchitecture.com>

Tue, Oct 8, 2019 at 4:04 PM

To: "tdyhomes@bellsouth.net" <tdyhomes@bellsouth.net>, Charles Liberis
<cliberis@liberislaw.com>, Linda Liberis <lindabliberis@gmail.com>, Charles Kunze
<chuck@artisansarchitecture.com>

Cc: Charles Kunze <chuck@artisansarchitecture.com>

Jim Bozeman,

I have been asked by Charles Liberis to give you approval to modify my drawings for the Covington Place Project located on Cervantes Avenue, N. Baylen Street, & W. Strong Street.

I do release The Covington Place Project to you with permission to modify the drawings as Charles Liberis directs. I will still retain the right to use Covington Place in my advertising, resumes, website and any other formats I desire, and to reference it as an Artisan's Architecture LLC design and partially built project.

I will not be responsible or liable for the project, permitting, errors or omissions, or any part of the drawings once they have been changed in any way from the current record set I have on file at my office as of today: 10-8-2019.

You may want to review any comments made to us by the ARB and North Hill to insure understanding of what was approved by those entities.

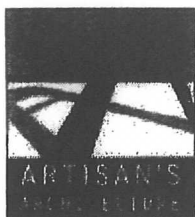
My title block, firm information and any electronic seals or signatures must be removed for all documents which are revised or modified after today: 10-8-2019.

I would expect that the good name and reputation of Artisan's Architecture LLC or Charles E. Kunze Jr. would not be demeaned or slandered in the future in reference to this change of the responsible design party, my understanding is that this is only being done for expedience of scheduling on the part of Charles Liberis.

Thank You,

CHARLES E. KUNZE JR.

AIA, NCARB,
PRESIDENT/OWNER OF
ARTISAN'S ARCHITECTURE LLC



August 31, 2017

Covington Place
15 West Strong Street
Pensacola, FL 32501

EXTERIOR MATERIALS & COLOR SCHEDULE

<u>Elements</u>	<u>Description</u>
Primary Exterior Finishes:	Hardie, Shiplap Siding with 7" Color - SW2849 (Westchester Gray), SW2819 (Downing Slate), & SW2821 (Downing Stone) Unit colors shall alternate these colors
Foundation Walls or Piers:	Pine Hall Brick- "Sedgefield(Q)" #1714 with Grey Grout.
Windows:	PGT Windguard Vinyl Windows with Exterior Mullions. Color-Bronze
Window Trim:	Hardie, Smooth Trim Board 5/4" Thick. Color-SW2844 "Roycroft Mist Grey"
Entry Door and Hardware:	Front & Balcony Door: Neuma-Flush Glazed-Fiberglass-Stained Finish Rear Door: Fiberglass Therma-Tru
Doors and Hardware:	Brushed Nichol Finish
Door Trim:	Hardie Smooth Trim Board 5/4" Thick. Color-SW2844 "Roycroft Mist Grey"
Garage Doors:	Raynor-Trade Mark, Simulated out Swing, with overlaid Trim. Bronze
Porch Balustrade:	Wood Rails with Turned Pickets. Color-SW2844, Powder Coated Aluminum Over Garage & end Balconies
Porch Columns:	Hardie Trim Smooth Trim 5/4" or Preformed round with Caps & Base. Color-SW2844
Porch Decking:	Brick Pavers on Lower Floor-Pine Hall Brick Co, "Sedgefield (Q) #1714 with Grey Grout or KDA 2X Floor Deck on Upper Porches. Color-SW2844
Ornament:	Hardie Color-2844
Fascia's:	Smooth Hardie-Painted Satin SW7038 "Tony Taupe"
Soffits:	Smooth Hardie 5/4" Color-SW2844
Gutters & Downspouts:	Prefinished OG Color-Bronze if Required

EXTERIOR MATERIALS & COLOR SCHEDULE

Elements	Description
Roofing:	Atlas Dimensional Shingles either Weatherford Wood or Thunderstorm Grey
Other Rooftop Elements:	Nail over ridge vent to match roofing.
Exterior Lighting:	Copper Finish – Gas & Electric Lighting
Walkways:	Concrete or Brick Pavers
Driveways:	Asphalt
Fencing:	6' Wood Privacy on non-Street Sides
Garden Walls:	Block – Painted SW2832 Colonial Revival
Gates:	Black Wrought Iron
Landscaping:	See Landscaping Plan A I.1
Signage:	To be determined – Proposed to be located wrought iron gates.
Miscellaneous:	N/A

Submitted Paint Samples

Front



Side



Trim



Garage



COVINGTON PLACE

EXTERIOR COLOR SAMPLES

Siding Colors

SW2849



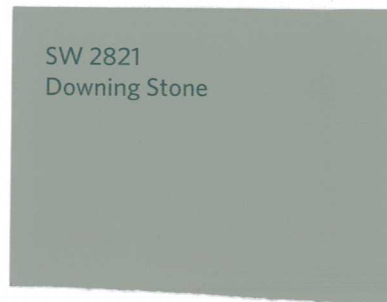
Westchester Gray

SW2819



Downing Slate

SW2821



Downing Stone

Trim & Accent Color

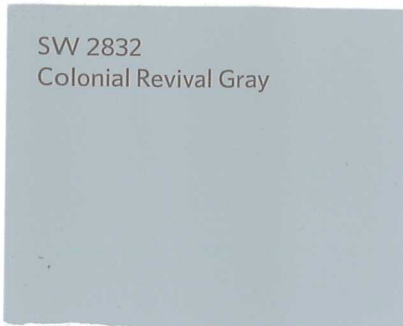
SW2844



Roycroft Mint Gray

Garden Wall Color

SW2832



Colonial Revival Gray

SIDING

SW 2849

Westchester Gray

SW 2844

Roycroft Mist Gray

SW 2819

Downing Slate

SW 2821

Downing Stone

SW 2832

Colonial Revival Gray

← TRIM

UNIT
COLORS

GARDEN
WALL

Covington Place

ROOF

Weathered
Wood

ROOF

Thunderbox
Gray

[REQUEST A QUOTE](#)[REQUEST A BROCHURE](#) [My Idea Center](#)**JamesHardie**

EXT SIDING

[COLOR AND DESIGN](#)[WHY HARDIE?](#)[PRODUCTS](#)[START YOUR PROJECT](#)[PRODUCT SUPPORT](#)[PROS](#)

HardiePlank® Lap Siding

1 / 4

SELECT CEDARMILL

Mountain Sage

More ColorPlus® Technology colors are available **near you...**[Request a Sample](#)[Download Product Catalog](#)[Warranty & Install Info](#)

HARDIEPLANK® LAP SIDING

EXT Windows



CUSTOM WINDOWS • DOORS

Windows
Doors

ProZone

Product Information
Resources
Media Center

PGI WINDOOR

PART OF THE PGTI
FAMILY OF BRANDS

CCU

WINGUARD® VINYL

DOUBLE HUNG



DH5560

Movable bottom sash that slides to open vertically

Constant force balance system for smooth, easy operation

Spiral balance system

- Standard feature on larger window sizes ensures ease of sash operation
- Optional upgrade on any window size

SecureConnect integrated corner keys for added sash strength

Tilt sash design for easy exterior cleaning

Embedded tilt latch

- For added strength in holding sash into frame
- Presents cleaner sight lines

Stylish ComfortLift handles

- Allows ease of operation and option to add style by selecting hardware finish
- Optional lift rail for alternative opening method

Beveled meeting rail enhances visual appeal of profile

Configuration options

- Provview/Oriel, Cottage, and custom sashes

Standard glass options

- Laminated Insulating Glass (impact-resistant)

CONFIGURATIONS

DOUBLE HUNG WINDOW

FRAME COLORS

STANDARD FINISHES

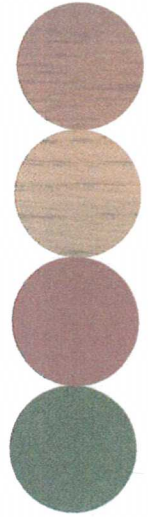
WHITE

PREMIUM FINISHES

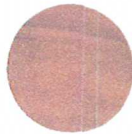
BRONZE



BEIGE BRONZE ANODIZE* PEBBLE KHAKI*



HUNTER GREEN* BRICK RED* NATURAL OAK DARK OAK



NATURAL CHERRY

Grid swatches are for reference only. Ask your dealer about final color matching.
*Available for select styles only. Ask your dealer for more details.

GRID FEATURES

FLAT GRID (GBG)

9/16" wide or 13/16" wide
Grid between the glass

CONTOUR GRID (GBG)

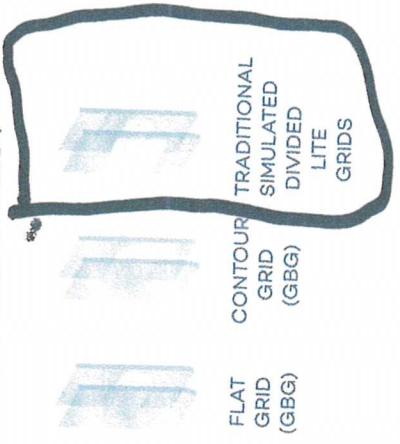
1" wide
Grid between the glass

TRADITIONAL SIMULATED DIVIDED LITE GRIDS

7/8" wide raised ogee applied to exterior and interior with 9/16" wide bronze shadow bar between the glass

GRID OPTIONS

WINDOW GRID STYLES



FLAT GRID (GBG) CONTOUR GRID (GBG) TRADITIONAL SIMULATED DIVIDED LITE GRIDS

PRODUCT OPTIONS

GLASS OPTIONS

Impact Resistant

THERMAL ENHANCEMENTS

Argon Gas (requires insulating glass)

High Performance Low-E

SCREEN TYPES

1816 Charcoal or Gray

2020 Screen mesh (optional)

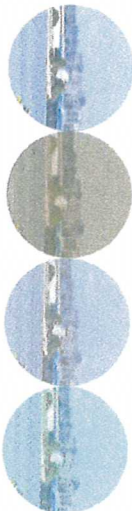
PREMIUM GLASS OPTIONS

Tempered Glass

Privacy Glass (Obscure)

GLASS TINTS

EXTERIOR REFLECTION



CLEAR

BRONZE

GRAY

GREEN



AZURE
BLUE

SOLAR
COOL
BRONZE

GRAYLITE
II

OBSCURE
(TEXTURED)

REQUEST A QUOTE

REQUEST A BROCHURE

My Idea Center

EXT TRIM
5/4 SMOOTH



JamesHardie



COLOR AND DESIGN

WHY HARDIE?

PRODUCTS

START YOUR PROJECT

PRODUCT SUPPORT

PROS



Download Product Catalog



Warranty & Install Info

HARDIETRIM® BOARDS

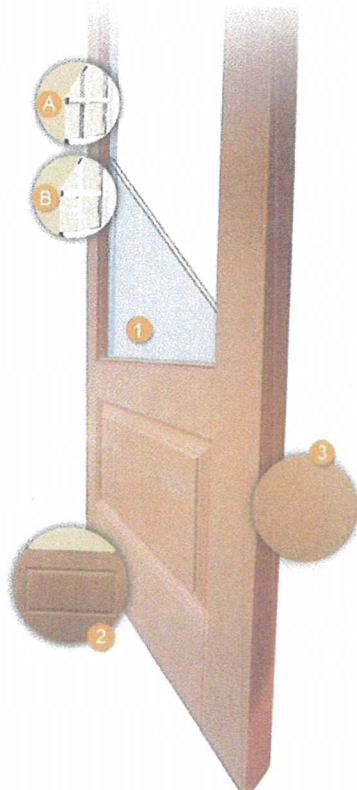
Trim is that final touch that completes your home's design. Accentuate corners, columns, fascia, doors, windows and more with HardieTrim® boards.

3/4 Lite Patio Doors Design Features

Design Features

Design Features

FRONT &
BALCONY
DOORS
W/SIMULATED
DIVIDED LITE
WHERE
APPLICABLE



NEUMA DOOR



Smooth White Interior and exterior finish is standard on all doors, including the 3/4 lite panel.

A. Simulated Divided Lites - 100% Composite 7/8" or 1-1/4" and fixed directly to the glass. For better energy efficiency than individual panes of glass. 1-1/4" SDL are unique for the 3/4" panel door only.

B. Grilles Between the Glass - 3/4" flat GBG available in classic, colonial patterns or can be customized by special order to fit our decor.

- 1 Standard with LoE2 272. Available with 3/4" I.G. LoE2 Impact Glass.
- 2 Embossed architectural design detail on exterior and interior of the panel.
- 3 Special order pre-finish options feature a refined Mahogany wood grain.

[\[top\]](#)

[Return](#)



Manufactured with 100% recycled glass panels.

[Terms of Use](#)

© 2014 Neuma Corporation, all rights reserved.

REAL EXTERIOR DOORS

THERMA TRU[®]
DOORS

WHAT TO
CONSIDER

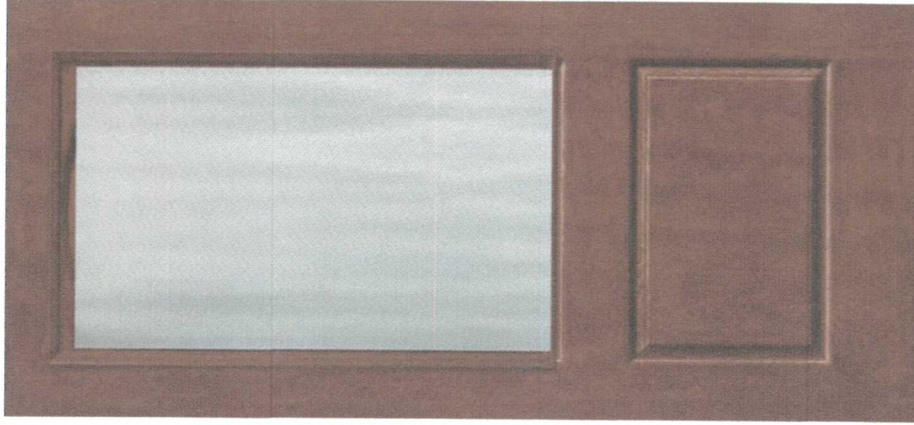
EXPLORE
DOORS

INSPIRATION
& DESIGN

WHERE
TO BUY



Share Print



Classic-Craft[®] Rustic Collection[™] \$\$\$

2/3 Lite 1 Panel | Style No. CCR20020XJ

1 Available Size

DESIGN YOUR ENTRYWAY

WHERE TO BUY

FINISH OPTIONS



Cherry



GLASS OPTIONS



Chinchilla



See how this privacy compares to clear glass

Don't see the glass design you want?

In addition to thousands of standard glass choices, we offer additional glass options through our Special Quote Program to help you find the right look for virtually any home.

[Learn More](#) >



TradeMark™ Wind Load

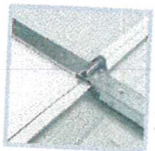
Classic Look, Unyielding Strength

The combination of durable, 24-gauge steel, defined raised panel styling and authentic woodgrain texture gives your home curb appeal with TradeMark steel garage doors. Add charm with colonial or ranch panels, or for a distinctive look on your home, choose the carriage house option. Optional polystyrene insulation can be added to provide additional comfort and help keep your garage quieter. TradeMark doors are available in both post and strut designs.



Hardware

Track formed from strong galvanized steel, paired with durable, long-wearing steel rollers ensures smooth, quiet operation.



Insulation

Optional energy-saving core of polystyrene insulation provides added comfort and helps keep your garage quieter.



Section Joints

Strong, roll-formed tongue-and-groove meeting rails seal out wind, rain, and snow, keeping your garage dry and secure.



Raynor Secure

TradeMark doors are available in a wide variety of pressure ratings to meet your local wind codes.

GARAGE DOORS

Colors

Standard



Optional

Raynor's OptiFinish paint process allows your TradeMark door to be customized with more than 1,800 Sherwin-Williams™ colors.

Decorative Hardware

The black matte powder coated straps and handles are designed to appear hand-forged, adding a historically-accurate dimensional quality to your door. Choose from handles and straps with Bean or Fleur-de-Lis designs.

Handles

Fleur-de-Lis
Handle



Bean
Handle

Straps

Bean

Fleur-de-Lis

Standard Limited Warranty**

Door Sections

"For As Long As You Own Your Home" against rust through

Hardware

3-years to the original purchaser

Springs

3-years to the original purchaser

** Limited Warranty: Visit www.raynor.com/products for complete Limited Warranty details

Panel Options*

Heights: 6'6" through 10' in 3" increments†

Widths: 4', 6', 8', 9', 10', 12', 15', 16', 18'

Colonial

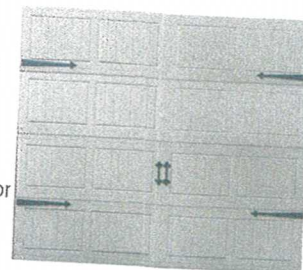
Ranch

Carriage House

Many other options available. Contact your Raynor dealer for further details.

Carriage House Option

The Carriage House option offers a classic design that adds character to your home. And, with decorative hardware available in Bean or Fleur-de-lis styles, the Carriage House option is the perfect design touch for any architecturally stylized home.



Hurricane Reinforcing Systems

TradeMark doors are available in both post and strut designs, giving homeowners flexibility in choosing between an assisted or unassisted door approved for IBC, FBC, TDI, or Miami-Dade installation environments.



Post Design



Strut Design



P.O. Box 448, 1101 East River Rd.
Dixon, IL 61021-0448
1-800-4-RAYNOR (472-9667)

Exclusively Distributed by:



Home



Contact Us



Help



Shipping



Shopping Cart

PORCHES

DOORS

GABLES

BRACKETS

BEADBOARD

MOULDINGS

AZEK

PHOTOS

Our Story

Guarantee

Customer Comments

Product Options

A-Z Index

Pictorial Index

PRODUCT CATEGORIES

[Home](#) > [Products](#) > [Rails](#) > [Rail Product Listings](#) > [Polyurethane Rails](#)

Search

Appliques

AZEK® Brand PVC

Balusters (Spindles)

Baseboards

Beadboard & V-Groove

Blocks, Corner/Base/Etc

Brackets

Caps, Door & Window

Casings, Door & Window

Ceiling Medallions

Columns

Corbels

Corner Guards (Beads)

Cornices

Crown Mouldings

Deck Boards, Etc

Entry & Window Systems

Finials & Drops

Gable Decorations

Gallery Rails

Handrails

Headers

Lamp Posts

Mantels

Mouldings

Jewel Posts

Liches, Wall

Panels/Medallions, Fretwork

Recessed Trim

Stair Balusters

Polyurethane Products

Porches - START HERE!

Porch Flooring

Porch Posts

Railing

Roof Spires

Trimming Trim

Polyurethane Rails # SP-RL (caf)

High Density Polyurethane (the only kind we sell) feels, sounds, installs, and paints just like wood but that's where the similarities end! [Read more about Polyurethane...](#)

Order Below

or order a small [Sample](#)


PICKETS EXT HANDRAILS

Screen/Storm Doors

Shingles, Cedar

Shutters

Signs

Small Parts

Spandrels

Spindles (and Balusters)

Stair Parts, Interior

Sunburst Fans

Trim Boards

Vents, Louvered

Wainscot Beadboard

YellaWood® Pressure Treated

The Bargain Room!

More . . .

HELP DESK

Product Options

Ordering Info

Shipping & Returns

How To Information

FAQ

Gift Certificates

Our Company

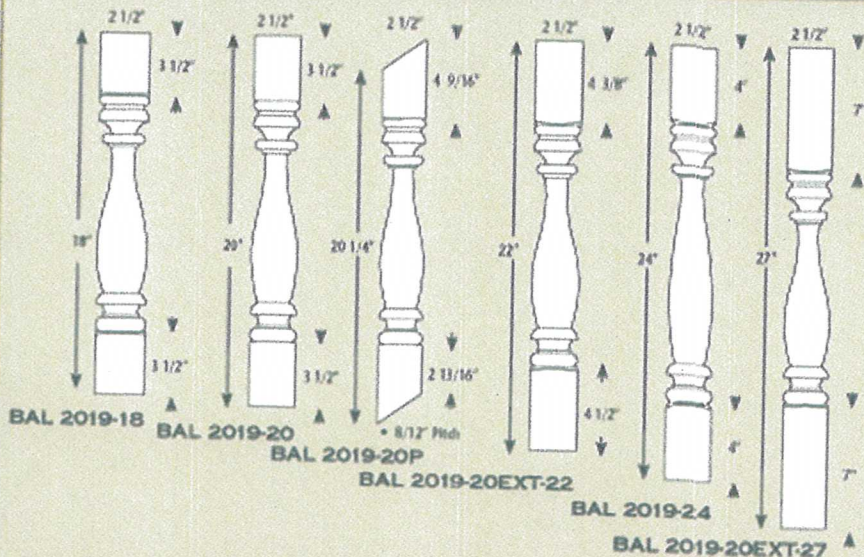
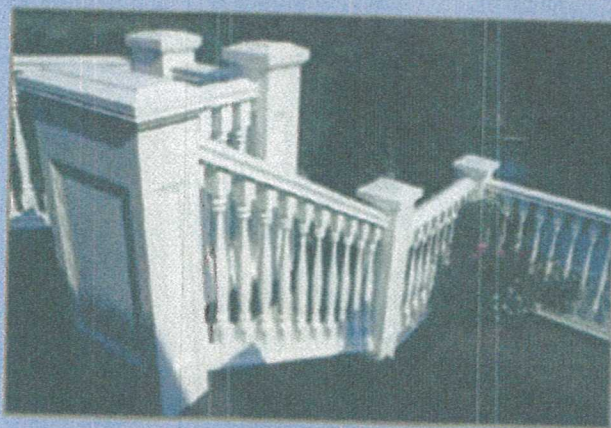
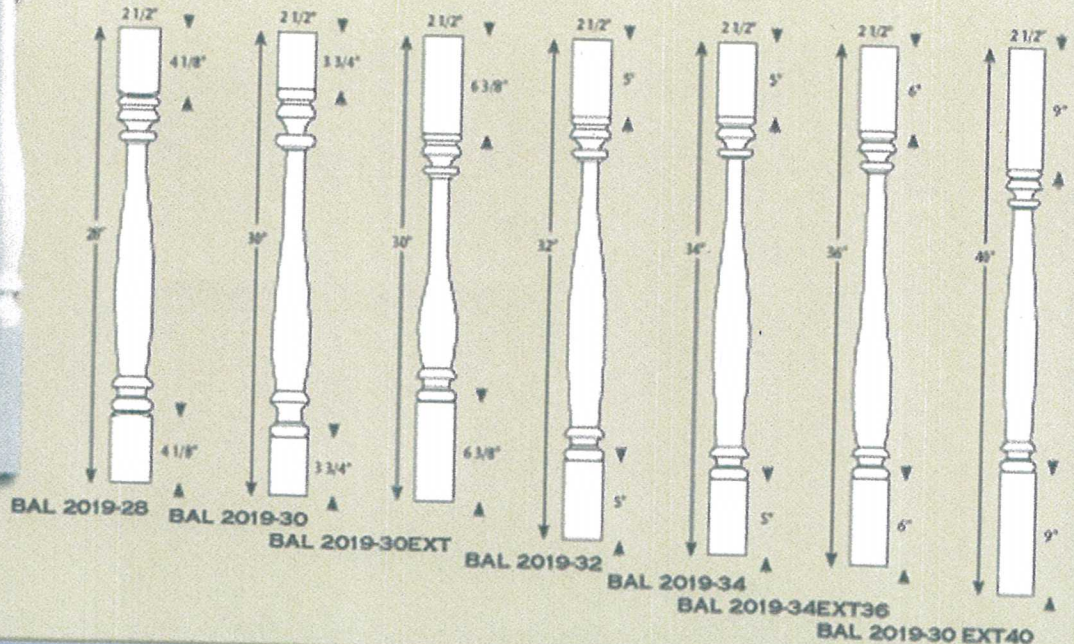


Photo illustrates the use of the following products: BAL 2019, and RAL 2105T & B.

BAL 2019

• 3/4" "M" Dimension • 2 1/2" Max. Space 4" Ball Rule • 1 1/16" Hole Saw



Above left:

Photo illustrates the use of the following products:

Above right:

Photo illustrates the use of the following products:





REQUEST A QUOTE

REQUEST A BROCHURE My Idea Center



EXT SOFFIT VENTED-SMOOTH

8/30/17, 5:23 PM

COLOR AND DESIGN

WHY HARDIE?

PRODUCTS

START YOUR PROJECT

PRODUCT SUPPORT

PROS



Download Product Catalog



Warranty & Install Info

HARDIESOFFIT® PANELS

Soffits are key construction elements—they cover the underside of your roof eaves and exterior porch ceilings. We offer them in both smooth and vented profiles to meet aesthetic needs as well as code requirements.

ROUND EXT COLUMN

Hand Crafted, Classically Inspired Architectural Columns, Balustrades &

info@meltonclassics.com (mailto:info@meltonclassics.com)

Questions? 800-963-3060 (tel:8009633060)

WRAPS



FRP Classic™ Fiberglass Column Covers

Overview

(http://meltonclassics.com/products/architectural-columns/fiberglass-columns-covers/)

Designs

(http://meltonclassics.com/products/architectural-columns/fiberglass-columns-covers/designs/)

Image Gallery

(http://meltonclassics.com/products/architectural-columns/fiberglass-columns-covers/photos/)

Specifications

(http://meltonclassics.com/products/architectural-columns/fiberglass-columns-covers/technical/)

Product Selection Assistance (http://meltonclassics.com/product-selection-assistance/)

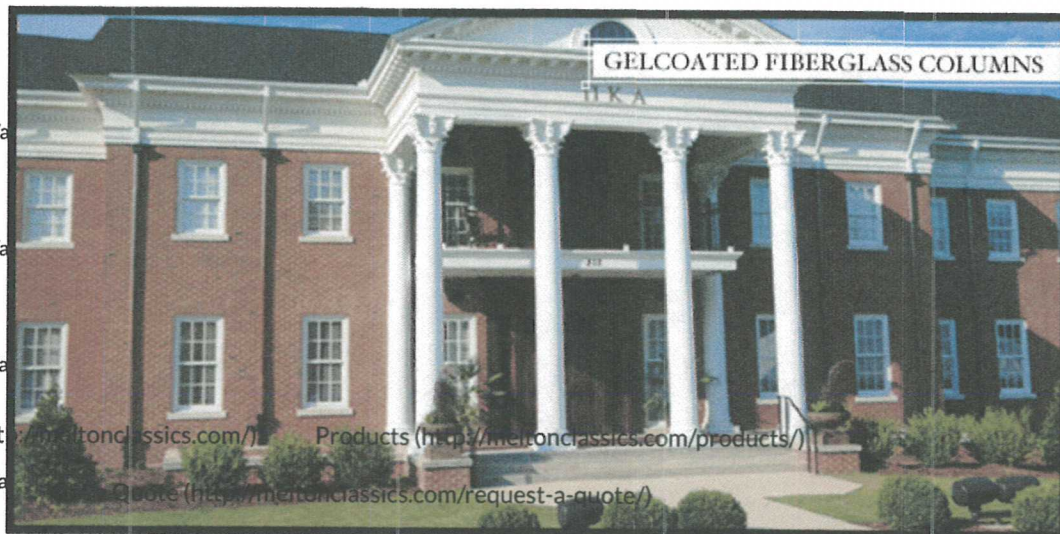
Installation

(http://meltonclassics.com/products/architectural-columns/fiberglass-columns-covers/how-to-install-fiberglass-columns/)

Warranty

(http://meltonclassics.com/technical-data/architectural-products-warranties/)

GELCOATED FIBERGLASS COLUMNS



Home (http://meltonclassics.com/)

Products (http://meltonclassics.com/products/)

Quote (http://meltonclassics.com/request-a-quote/)

Photos (http://meltonclassics.com/project-photos/)

Overview (http://meltonclassics.com/products/architectural-columns/fiberglass-columns-covers/)

Technical (http://meltonclassics.com/technical-data/)

FAQ (http://meltonclassics.com/faqs/general-faqs/)

Designs (http://meltonclassics.com/products/architectural-columns/fiberglass-columns-covers/designs/)

Contact (http://meltonclassics.com/contact/)

Literature (http://meltonclassics.com/literature/)

Plans/Joints (http://meltonclassics.com/products/architectural-columns/fiberglass-columns-covers/plans-joints/)

Technical (http://meltonclassics.com/products/architectural-columns/fiberglass-columns-covers/technical/)

Architectural Column Products

Composite Fiberglass Columns

DuraClassic™

(http://meltonclassics.com/composite-fiberglass-columns/)

Fluted Fiberglass Columns

FiberFlute™

(http://meltonclassics.com/products/architectural-columns/fluted-columns/)

Fiberglass Columns

ClassicGlas™

(http://meltonclassics.com/products/architectural-columns/classicglas/)

Fiberglass Column Covers

FRP Classic™

(http://meltonclassics.com/products/architectural-columns/fiberglass-columns-covers/)

GFRC Columns (Glass-Fiber Reinforced Concrete)

FiberCrete™

(http://meltonclassics.com/products/architectural-columns/gfrc-columns-covers/)

PVC Column Covers

MeltonCraft™

(http://meltonclassics.com/products/architectural-columns/pvc-porch-columns/)

FRP Classic™ Gelcoated Fiberglass Column Designs

Tuscan Round

#200FRP



Roman Doric

#210FRP



Roman Doric w/Attic

#220FRP



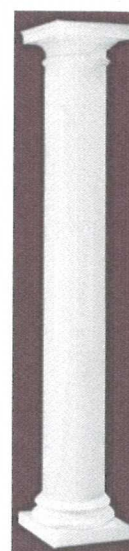
Tuscan Straight w/Astragal

#200FRP



Roman Doric w/Attic Straight w/Astragal

#220FRP



Straight Shaft



Tuscan Square

#200FRP

Roman Ionic

#230FRP

Roman Ionic

#235FRP

Scamozzi

#240FRP

Scamozzi

#245FRP

Roman Corinthian

#250FRP

SQUARE COLUMN WRAPS

Non-Tapered PVC Column Wraps

[Non-tapered square columns](#) | [Tapered square columns](#) | [Caps & bases](#)

Our Non-tapered Column Wraps come in one complete kit that includes the traditional Box Cap and Base, squaring blocks, adhesive and instruction sheets. All column wraps are made of PVC.

[Download Installation Instruction Sheet](#)

Lead Time: Column wraps ship within 5 to 7 days.

Product Specs: The Non-tapered Plain Column Wraps are constructed of a .625" thick material, while the Non-tapered Economy Plain Column Wrap is a .375" thickness. Box Caps and Bases come in a .625" standard thickness. Optional [cap and base styles](#) are available.

Scroll down this page for items and pricing:



[Plain](#) | [Economy](#) | [Fluted](#) | [Double Fluted](#) | [Raised](#) | [Double Raised](#) | [Recessed](#) | [Double Recessed](#)

Plain Column Wrap

Product Code	Shaft Width	Shaft Height	List Price	Sale Price
CW6X72P1BX	6"	72"	\$224.96	\$146.22
CW6X96P1BX	6"	96"	\$257.61	\$167.45
CW6X108P1BX	6"	108"	\$277.56	\$180.41
→ CW6X120P1BX	6"	120"	\$293.87	\$191.02
CW8X72P1BX	8"	72"	\$261.41	\$169.92
CW8X96P1BX	8"	96"	\$303.20	\$197.08
CW8X108P1BX	8"	108"	\$329.10	\$213.92
CW8X120P1BX	8"	120"	\$349.98	\$227.49
CW8X144P1BX	8"	144"	\$397.46	\$258.35
CW10X72P1BX	10"	72"	\$295.78	\$192.26
CW10X96P1BX	10"	96"	\$346.69	\$225.35
CW10X108P1BX	10"	108"	\$377.28	\$245.23
→ CW10X120P1BX	10"	120"	\$402.72	\$261.77
CW10X144P1BX	10"	144"	\$459.63	\$298.76
CW12X72P1BX	12"	72"	\$330.12	\$214.58
CW12X96P1BX	12"	96"	\$390.25	\$253.66
CW12X108P1BX	12"	108"	\$425.28	\$276.43
CW12X120P1BX	12"	120"	\$455.29	\$295.94

WholesaleMillwork

AUGUST SUPER SALE

Sale ends August 30

[Shipping](#) [Privacy Policy](#) [Contact](#) [FAQ](#)

DOOR & WINDOW EXTERIOR HEAD TRIM

Window Trim - Transform Your Home

[Door Trim](#) | [Window Trim](#) | [Window Trim Installation Guide](#)

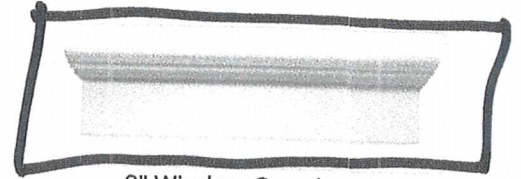
Window trim can transform an ordinary home into an extraordinary home. Many pieces are designed to work together. The options are virtually countless. In addition to our custom capabilities, we carry a full product line of products which are made of high density polyurethane. If you don't see what you are looking for on our site, call us at **1-866-995-6001** or email at salesinfo@wholesalemillwork.com. We also offer custom sizing of all window trim.



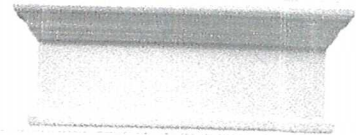
6" Window Crosshead



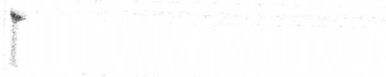
12" Window Crosshead



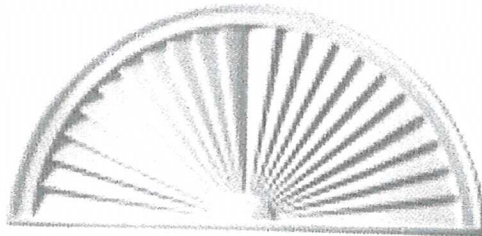
9" Window Crosshead



14" Window Crosshead



Craftsman Crossheads (2 styles)



Half Circle Sunburst



Half Round Spoked Pediment



Jim Bozeman <tdyhomesnwfl@gmail.com>

Landscape

Charles Liberis <cliberis@liberislaw.com>
To: Today's Homes <tdyhomes@bellsouth.net>

Fri, Mar 13, 2020 at 1:23 PM

{ DUH! Design

{ Tillman -grounds and maintenance }

Very truly yours,



Charles S. Liberis

Liberis Law Firm

212 W. Intendencia

Pensacola, FL 32502

Office: 850-438-9647

Fax: 850-433-5409

Please Note: Any amount over \$5,000.00 needed for closing will have to be wired in for closing. If the amount is less than \$5,000.00 we can accept a certified check.

****Be aware! Online banking fraud is on the rise. If you receive an email containing WIRE TRANSFER INSTRUCTIONS to our firm, please call us immediately at 850-438-9647 to verify the information prior to sending funds.** NOTE: OUR wire instructions will NEVER have a Swift Code.**

The information contained in this message is protected by the attorney work-product privilege. It is intended only for the use of the addressee(s) named above. If this message has been sent to you by mistake, the privileges are not waived by virtue of that mistake. If you are not the named addressee(s) or the employee or agent responsible to deliver it to the named addressee(s), you may not use, disseminate, distribute, or copy this message. If you have received this message in error, please immediately so notify us by reply e-mail and delete this message from your computer. Thank you.

[Quoted text hidden]

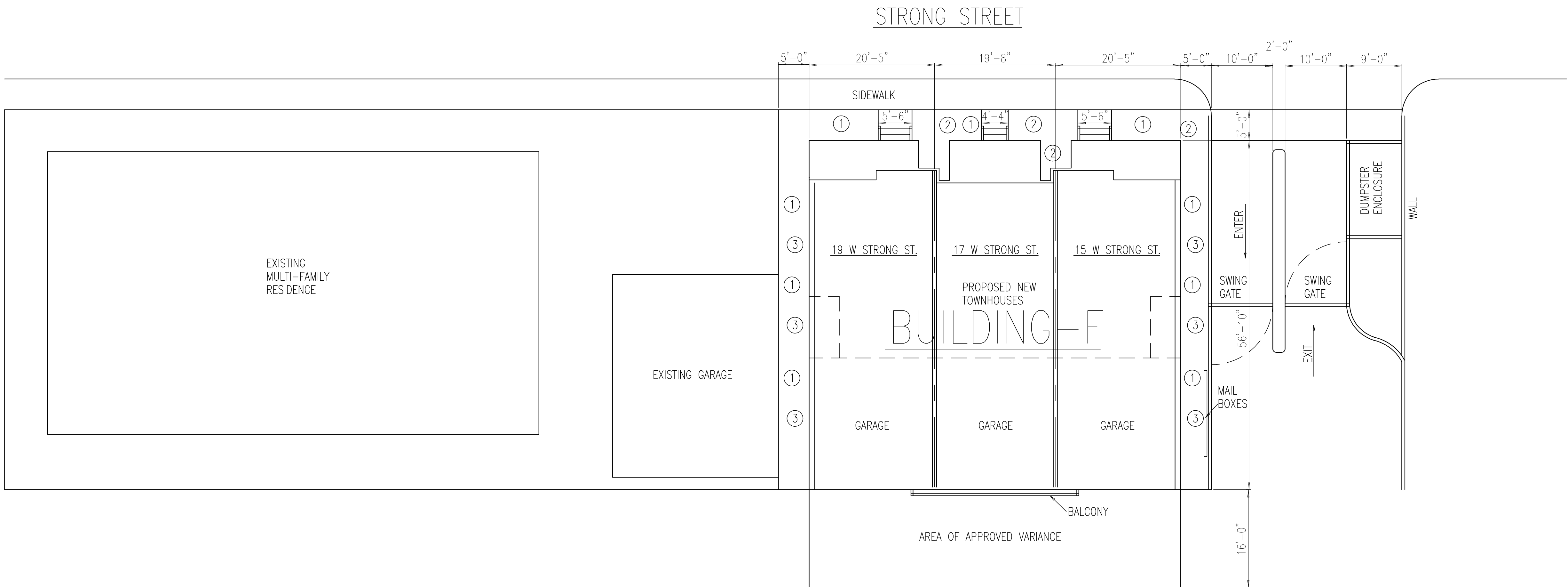
This email has been scanned by the Symantec Email Security.cloud service.
For more information please visit <http://www.symanteccloud.com>

This email has been scanned by the Symantec Email Security.cloud service.
For more information please visit <http://www.symanteccloud.com>

COVINGTON PLACE

ESCAMBIA COUNTY, FLORIDA

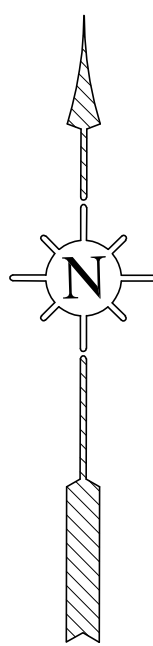
BAYLEN STREET



LANDSCAPING

- 1) ST. AUGUSTINE SOD
- 2) CRAPE MYRTLE (WHITE)
- 3) CONFEDERATE JASMINE

NOTE: PROPERTY LINES AND DIMENSIONS TO BE VERIFIED BY REGISTERED LAND SURVEYOR.



Today's Homes of Northwest Florida, Inc.

DESIGNER: JAMES C. BOZEMAN
101 S. ALCANIZ ST., PENSACOLA, FL 32501
(850) 432-3510 FAX: 434-2375 EMAIL: tdhomes@bellsouth.net

DRAWN BY: J. GRAY

DATE: JAN. 22 2020

SCALE: 1"=10'-0"

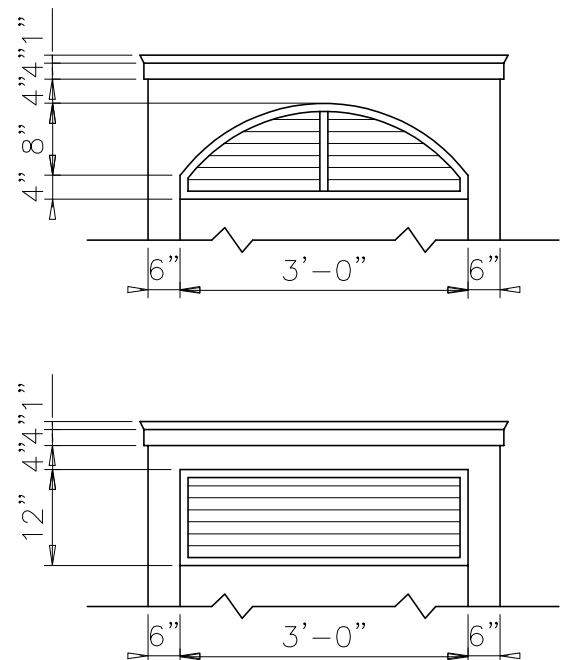
SHEET NUMBER: 1 of 11

DRAWING NO.:
B-0320

DESCRIPTION: SITE PLAN

© COPYRIGHT 2017. RIGHTS RESERVED. DO NOT REPRODUCE WITHOUT WRITTEN PERMISSION OF JAMES C. BOZEMAN, OR TODAY'S HOMES OF NORTHWEST FLORIDA, INC. VERIFY DIMENSIONS BEFORE CONSTRUCTION. DESIGNER IS NOT RESPONSIBLE FOR ANY CHANGES TO ORIGINAL DESIGNS.

TODAYS
49th HOMES
1966 JIM BOZEMAN 2017

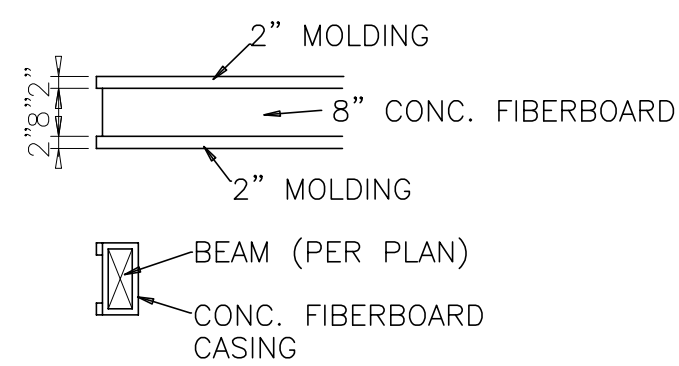


DOOR & WINDOW SURROUNDS
ELLIPTICAL DESIGN WITH 1" LOUVERS
CAN BE BUILT WITH 3/4" PLYWOOD OR
CONCRETE FIBERBOARD CUT OUT
LOUVER INSERTS.
OPTION
DURABRACK PREFAB DETAIL

DOOR & WINDOW LOUVER DETAIL
N.T.S.



FRONT ELEVATION

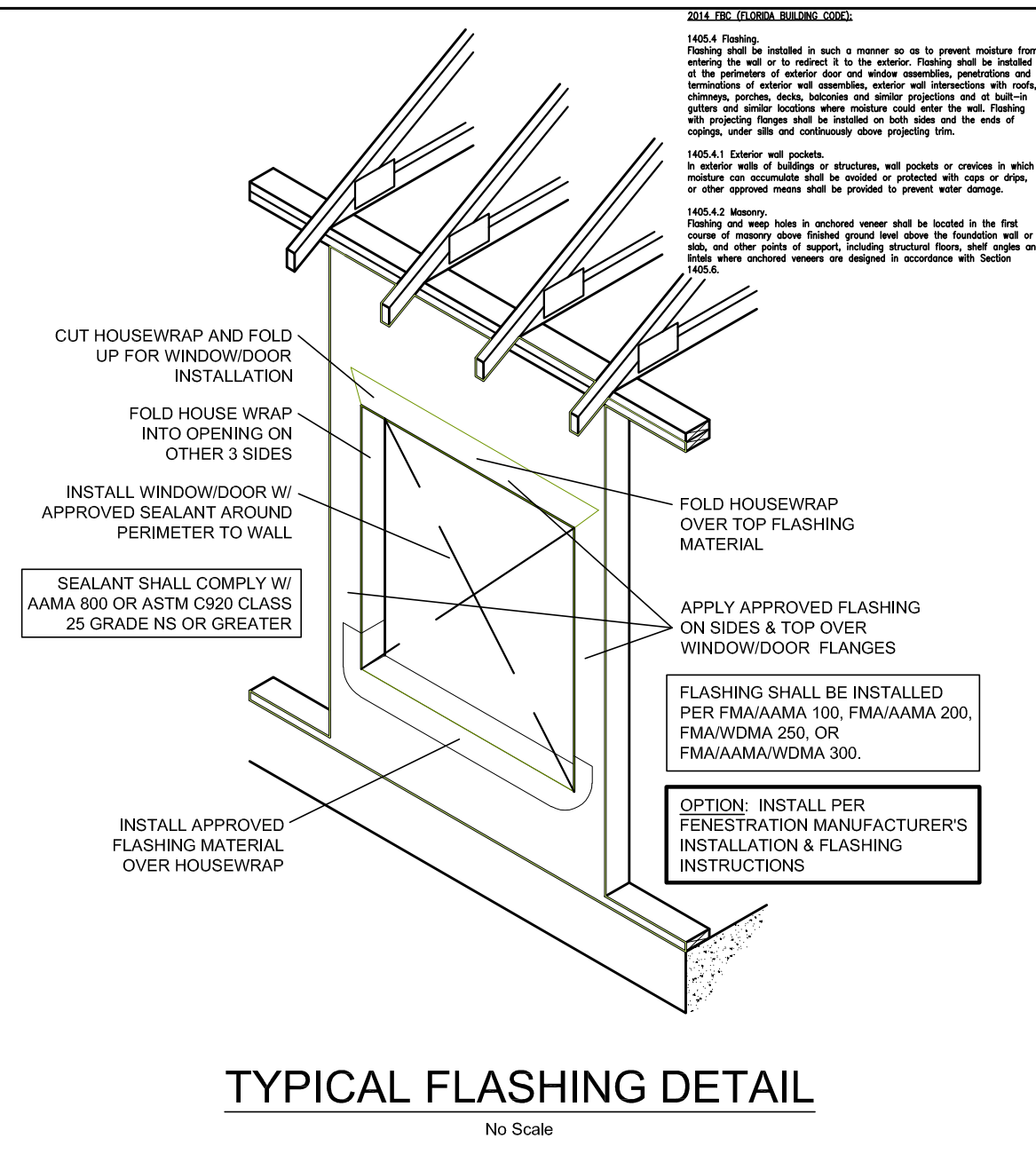


CASED BEAM DETAIL
3/8"=1'-0"

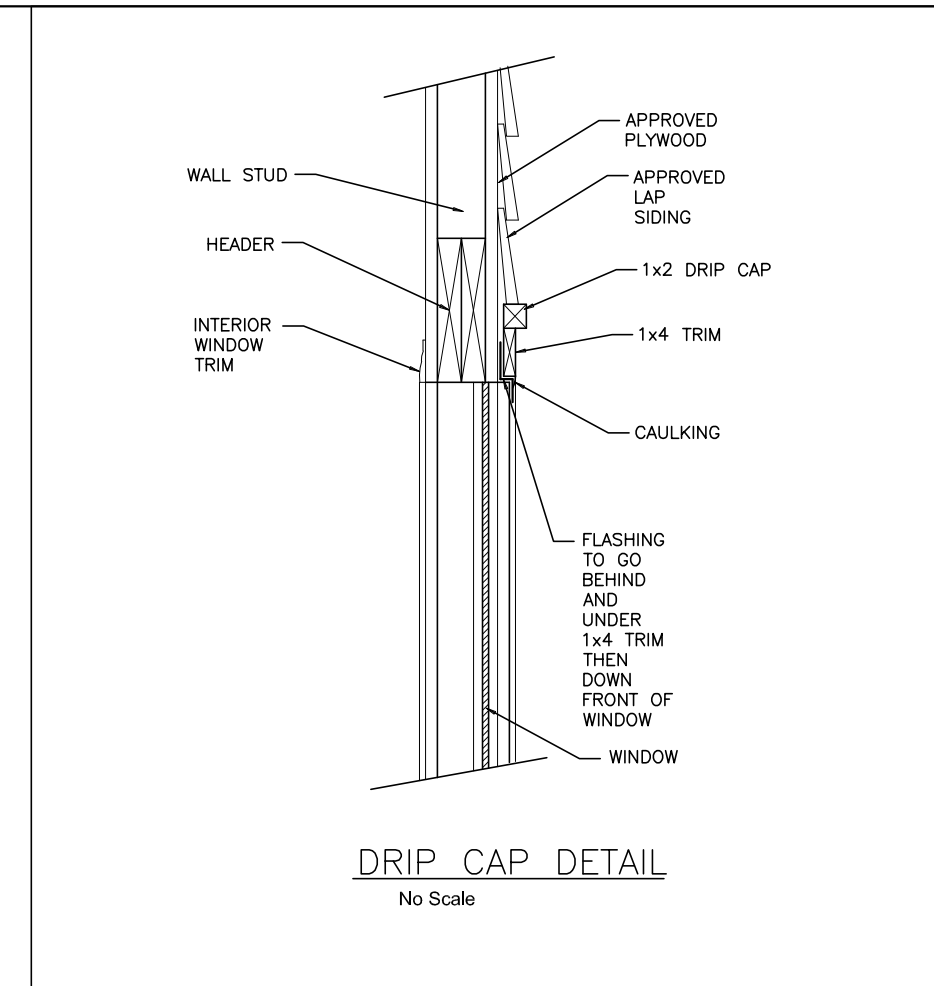
- 30 YEAR DIMENSIONAL ASPHALT SHINGLE ROOFING OVER PEEL & STICK ROOF WATERPROOFING MEMBRANE, ADHERED TO TOP OF 5/8" APA RATED SHEATHING. SHEATHING TO BE ATTACHED AND NAILED SCHEDULE ON ENGINEER'S STRUCTURAL SHEATHING SCHEDULE.
- PERFORATED HARDIE SOFFIT SHEATHING.
- P.T. CONTINUOUS 2"x6" FASCIA BOARD WITH 3/4"x4" HARDIE BOARD FASCIA TRIM AND 3" PRE-FINISHED METAL DRIP EDGE FLASHING.
- 7" HARDIE SHIP-LAP SIDING OR SHAKES, OVER WATERPROOFING WALL TO FRAMING PER STRUCTURAL SPECIFICATIONS AND NOTES.
- 5/4"x12" HARDIE BOARD TRIM.
- NEUMA DOORS, WITH RAISED DIVIDERS, ALL TRIM & MOLDINGS TO BE 5/4" HARDIE BOARD.
- "PGT" VINYL WINDOWS, WITH RAISED DIVIDERS, ALL TRIM & MOLDINGS TO BE 5/4" HARDIE BOARD.
- RAYNOR-TRADE MARK SIMULATED OUT-SWING GARAGE DOOR, WITH OVERLAP TRIM, ALL SURROUNDING TRIM & MOLDINGS TO BE 5/4" HARDIE BOARD.
- PRE-FINISHED POWDER COATED ALUM. RAILS & PICKETS, 3'-0" HIGH.
- PORCH FLOORING TO BE MANUFACTURED "TREX-LIKE" PORCH DECKING BOARDS OVER AIR SPACE, DECKING ANCHORED TO SLOPED P.T. SLEEPERS RUN PARALLEL TO DRAINAGE SLOPE, BENEATH AIR SPACE INSTALL A HEAVY DUTY SINGLE PLY WATERPROOF BARRIER ON 5/8" APA RATED DECKING. MOUNTED TO TOP OF 2X (PER STRUCTURAL) PORCH FLOOR FRAMING.
- BRICK VENEER (PINE HALL BRICK-SEDFIELD (Q) 1714 WITH GRAY GROUT) ON CMU FOUNDATION WALLS.
- BRICK ROWLOCK COURSE CONTINUOUS (PINE HALL BRICK-SEDFIELD (Q) 1714 WITH GRAY GROUT).
- BRICK PAVERS (PINE HALL BRICK-SEDFIELD (Q) 1714 WITH GRAY GROUT) ON ALL FIRST FLOOR PORCH FLOORS AND ON ALL EXTERIOR STEPS.



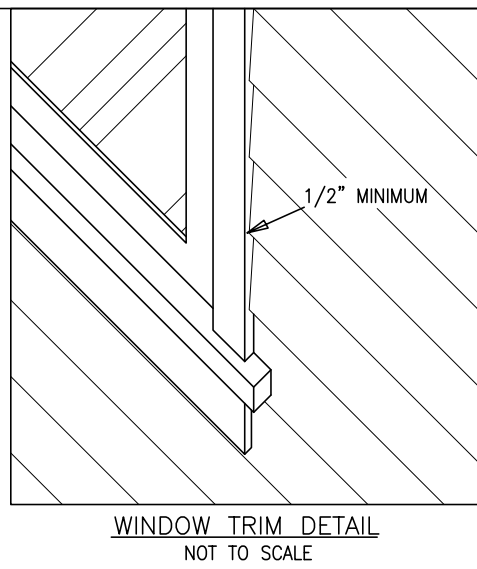
RIGHT ELEVATION



TYPICAL FLASHING DETAIL



DRIP CAP DETAIL



WINDOW TRIM DETAIL
NOT TO SCALE

DESCRIPTION: ELEVATIONS

© COPYRIGHT 2019, RIGHTS RESERVED. DO NOT REPRODUCE WITHOUT WRITTEN PERMISSION
OF JAMES C. BOZEMAN, OR TODAY'S HOMES OF NORTHWEST FLORIDA, INC.
VERIFY DIMENSIONS BEFORE CONSTRUCTION.
DESIGNER IS NOT RESPONSIBLE FOR ANY CHANGES TO ORIGINAL DESIGNS.

DATE: NOV. 15 2019

DRAWN BY: J. GRAY

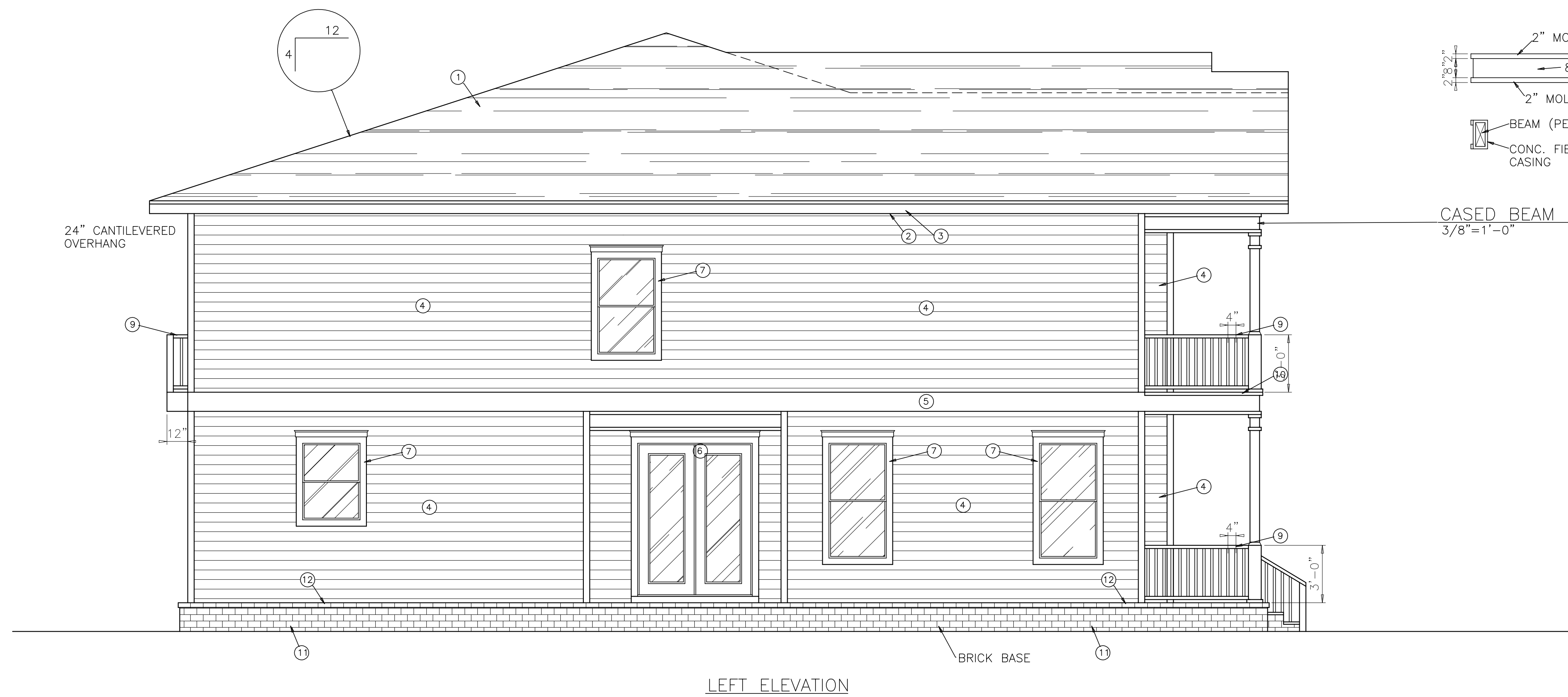
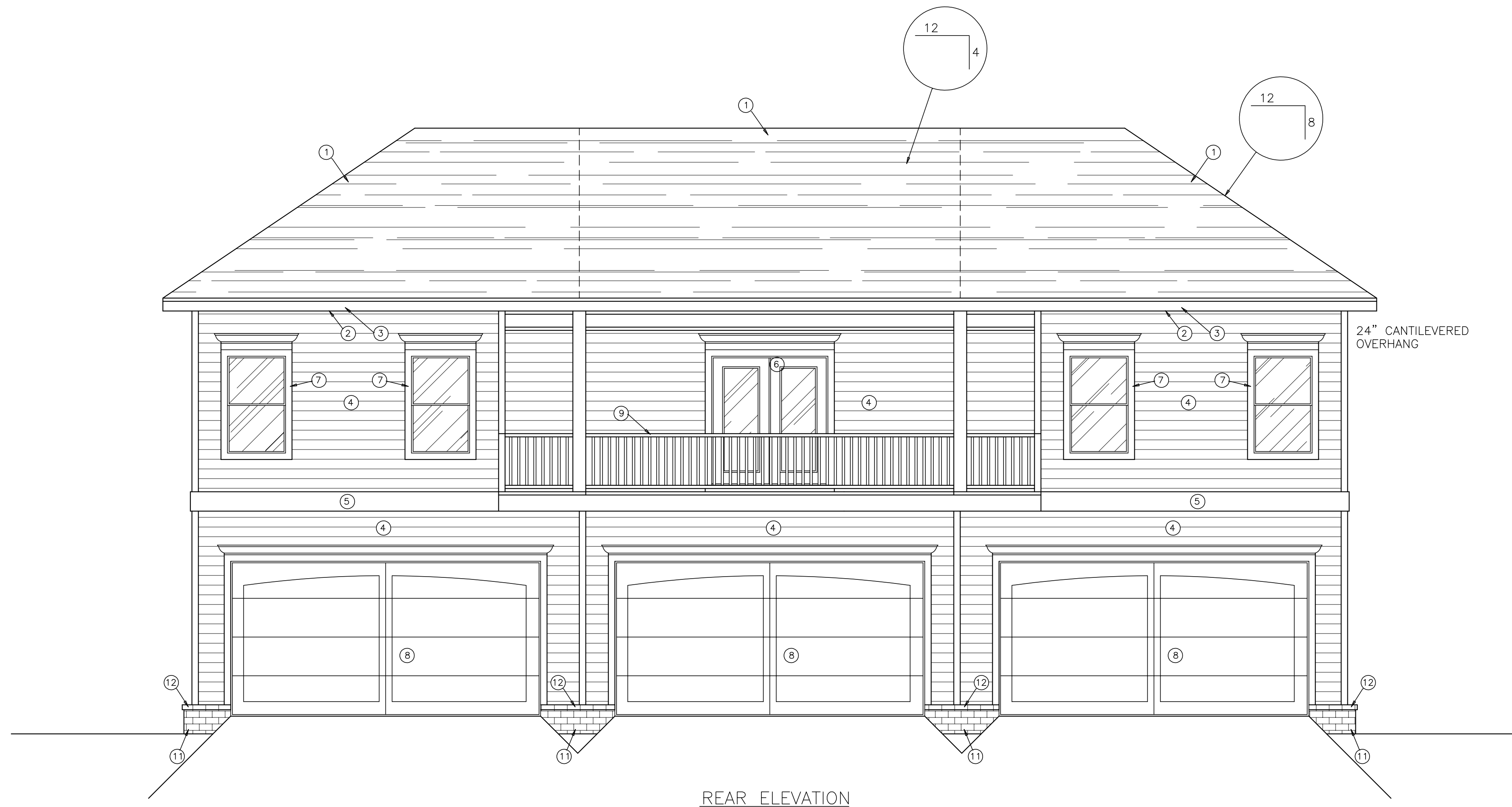
SHEET NUMBER:
2 OF 11

SCALE: 1/4"=1'-0"

DRAWING NO.:
B-0320

Today's Homes of Northwest Florida, Inc.

DESIGNER: JAMES C. BOZEMAN
101 S. ALCANIZ ST., PENSACOLA, FL 32502
(850)-432-3510 FAX: 434-2375



- 1) 30 YEAR DIMENSIONAL ASPHALT SHINGLE ROOFING OVER PEEL & STICK ROOF WATERPROOFING MEMBRANE, ADHERED TO TOP OF 5/8" APA RATED SHEATHING. SHEATHING TO BE ATTACHED AND NAILED SCHEDULE ON ENGINEER'S STRUCTURAL SHEATHING SCHEDULE.
- 2) PERFORATED HARDIE SOFFIT SHEATHING.
- 3) P.T. CONTINUOUS 2"x6" FASCIA BOARD WITH 3/4"x4" HARDIE BOARD FASCIA TRIM AND 3" PRE-FINISHED METAL DRIP EDGE FLASHING.
- 4) 7" HARDIE SHIP-LAP SIDING OR SHAKES, OVER WATERPROOFING WALL TO FRAMING PER STRUCTURAL SPECIFICATIONS AND NOTES.
- 5) 5/4"x12" HARDIE BOARD TRIM.
- 6) NEUMA DOORS, WITH RAISED DIVIDERS, ALL TRIM & MOLDINGS TO BE 5/4" HARDIE BOARD.
- 7) "PGT" VINYL WINDOWS, WITH RAISED DIVIDERS, ALL TRIM & MOLDINGS TO BE 5/4" HARDIE BOARD.
- 8) RAYNOR-TRADE MARK SIMULATED OUT-SWING GARAGE DOOR, WITH OVERLAID TRIM, ALL SURROUNDING TRIM & MOLDINGS TO BE 5/4" HARDIE BOARD.
- 9) PRE-FINISHED POWDER COATED ALUM. RAILS & PICKETS, 3'-0" HIGH.
- 10) PORCH FLOORING TO BE MANUFACTURED "TREX-LIKE" PORCH DECKING BOARDS OVER AIR SPACE, DECKING ANCHORED TO SLOPED P.T. SLEEPERS RUN PARALLEL TO DRAINAGE SLOPE, BENEATH AIR SPACE INSTALL A HEAVY DUTY SINGLE PLY WATERPROOF BARRIER ON 5/8" APA RATED DECKING. MOUNTED TO TOP OF 2X (PER STRUCTURAL) PORCH FLOOR FRAMING.
- 11) BRICK VENEER (PINE HALL BRICK-SEDGEFIELD (Q) 1714 WITH GRAY GROUT) ON CMU FOUNDATION WALLS.
- 12) BRICK ROWLOCK COURSE CONTINUOUS (PINE HALL BRICK-SEDGEFIELD (Q) 1714 WITH GRAY GROUT).
- 13) BRICK PAVERS (PINE HALL BRICK-SEDGEFIELD (Q) 1714 WITH GRAY GROUT) ON ALL FIRST FLOOR PORCH FLOORS AND ON ALL EXTERIOR STEPS.

DESCRIPTION: ELEVATIONS

© COPYRIGHT 2019, RIGHTS RESERVED. DO NOT REPRODUCE WITHOUT WRITTEN PERMISSION OF JAMES C. BOZEMAN, OR TODAY'S HOMES OF NORTHWEST FLORIDA, INC. VERIFY DIMENSIONS BEFORE CONSTRUCTION. DESIGNER IS NOT RESPONSIBLE FOR ANY CHANGES TO ORIGINAL DESIGNS.

DATE: NOV. 15 2019

DRAWN BY: J. GRAY

DRAWING NO.:
B-0320

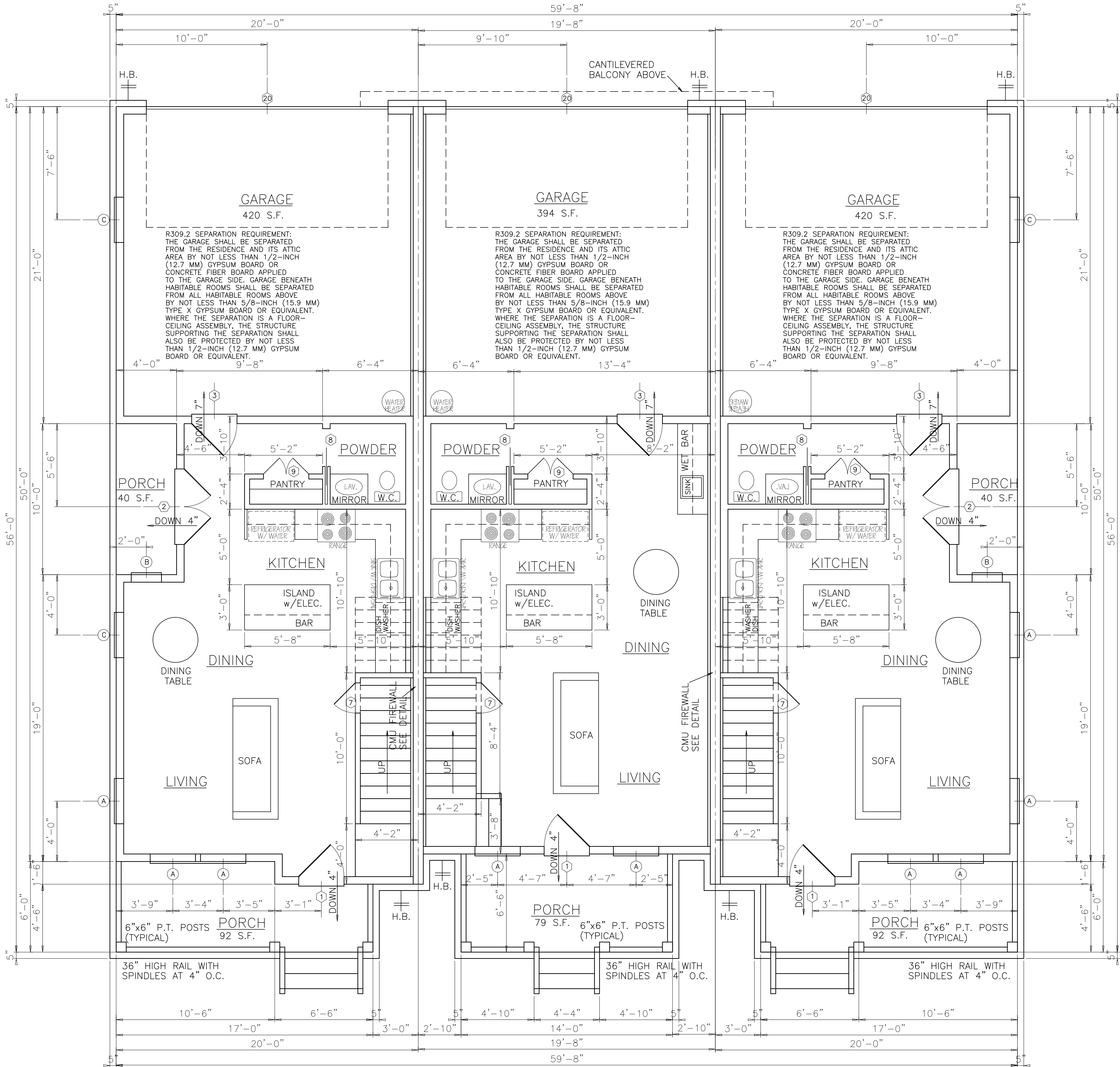
SHEET NUMBER:
3 OF 11

SCALE: 1/4"=1'-0"

Today's Homes of Northwest Florida, Inc.

DESIGNER: JAMES C. BOZEMAN
101 S. ALCANIZ ST., PENSACOLA, FL 32502
(850)-432-3510 FAX: 434-2375

FINISH ROOM SCHEDULE			DOOR SCHEDULE			WINDOW SCHEDULE		
ROOM	FLOOR	WALLS	CEILING	REMARKS	NO.	SIZE	DESCRIPTION	REMARKS
LIVING		ORANG PEEL PAINT	ORANG PEEL TEXT		1	3'-0"x6'-0"x1 3/4"	INSULATED	INSULATED
DINING					2	(2)-2'-2"x6'-0"x1 3/4"	DOUBLE FRENCH DOOR UNIT	INSULATED
KITCHEN					3	3'-0"x6'-0"x1 3/4"	INSULATED	INSULATED
MASTER SUITE					4	(2)-2'-2"x6'-0"x1 3/4"	DOUBLE FRENCH DOOR UNIT	INSULATED
MASTER SUITE 2					5	(2)-3'-0"x6'-0"x1 3/4"	DOUBLE FRENCH DOOR UNIT	INSULATED
BEDROOM 2					6	5'-0"x6'-0"x1 3/4"	INSULATED	INSULATED
BEDROOM 3					7	2'-0"x6'-0"x1 3/8"	DECORATIVE	
BATH 1					8	2'-0"x6'-0"x1 3/8" ROCKET	MASONITE PAINT	
BATH 2					9	(2)-1'-6"x6'-0"x1 3/8"	6-PANEL	
POWDER					10	2'-0"x6'-0"x1 3/8"	6-PANEL	
GARAGE	CONCRETE				11	2'-0"x6'-0"x1 3/8"	HVAC DOOR	
					12	2'-0"x6'-0"x1 3/8"	6-PANEL	
					13	2'-0"x6'-0"x1 3/8"	6-PANEL	
					14	2'-0"x6'-0"x1 3/8"	6-PANEL	
					15	(2)-2'-2"x6'-0"x1 3/8"	ROLLING BARN DOOR	
					16	5'-0"x6'-0"x1 3/8" B-FOLD	6-PANEL	
					17	4'-0"x6'-0"x1 3/8" B-FOLD	6-PANEL	
					18	4'-0"x6'-0"x1 3/8" B-FOLD	6-PANEL	
					19	2'-0"x6'-0"x1 3/8" B-FOLD	6-PANEL	
					20	16"x8"	OVERHEAD GARAGE DOOR	
					SQUARE FOOTAGE INDEX			
					FINISH UNIT'S			
					FIRST FLOOR 562 S.F.			
					SECOND FLOOR 986 S.F.			
					TOTAL LIVING AREA 1582 S.F.			
					FRONT PORCH 92 S.F.			
					SIDE PORCH 40 S.F.			
					GARAGE 420 S.F.			
					WIND RATED			

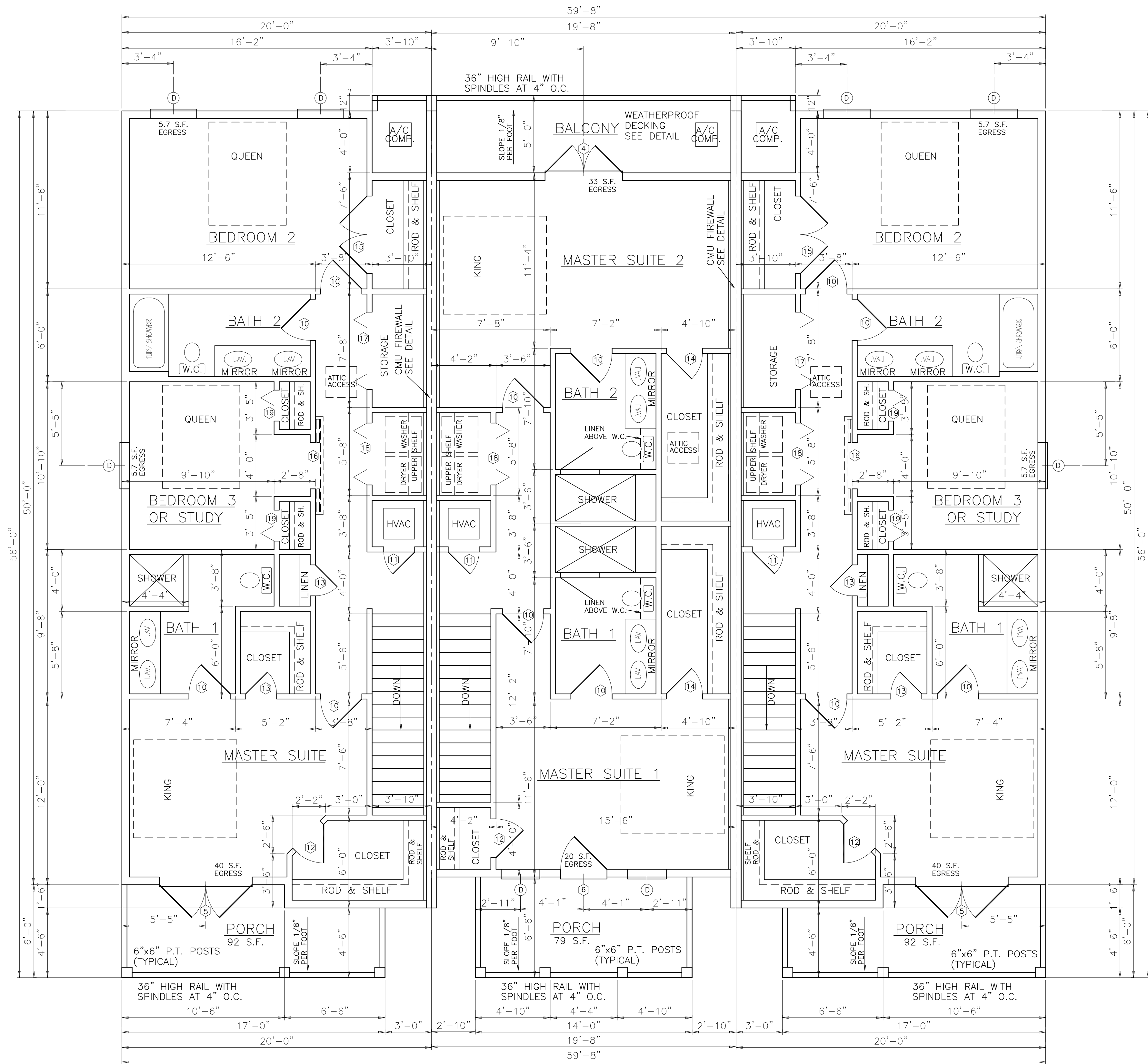


FIRST FLOOR 562 S.F.
SECOND FLOOR 1014 S.F.
TOTAL LIVING AREA 1582 S.F.

FIRST FLOOR 570 S.F.
SECOND FLOOR 986 S.F.
TOTAL LIVING AREA 1556 S.F.

FIRST FLOOR 562 S.F.
SECOND FLOOR 1014 S.F.
TOTAL LIVING AREA 1582 S.F.

BUILDING F FIRST FLOOR



BUILDING F SECOND FLOOR