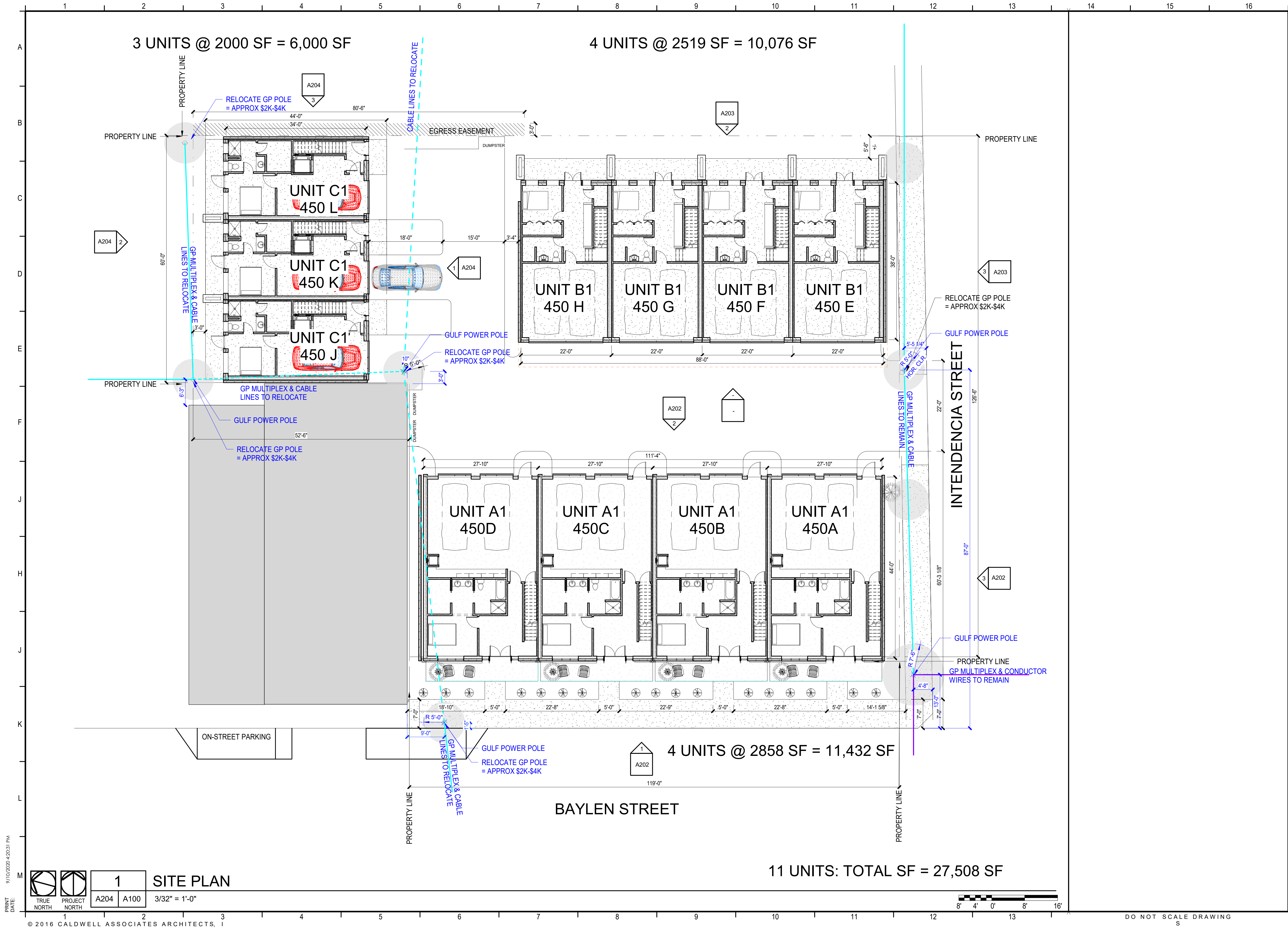


A vertical scale from 0 to 100 with tick marks every 10 units. The scale is labeled with letters A through M at specific intervals: A at 0, B at 10, C at 20, D at 30, E at 40, F at 50, J at 60, H at 70, J at 80, K at 90, L at 100, and M at 110.



†



PROJECT ISSUES:	
CONCEPT PLANS	06.19.2020
SCHEMATIC DESIGN	07.14.2020
SCHEMATIC DESIGN 2	08.19.2020
SCHEMATIC DESIGN 3	08.28.2020

PROJECT TEAM:	
CIVIL	KEN HORNE & ASSOCIATES
STRUCTURAL	JOE DEREUIL & ASSOCIATES
ARCHITECTURAL	CALDWELL ASSOC. ARCHITECTS
FIRE PROTECTION	W3 ENGINEERING
PLUMBING	W3 ENGINEERING
MECHANICAL	W3 ENGINEERING
ELECTRICAL	W3 ENGINEERING
LANDSCAPE	EKISTICS DESIGN STUDIO, INC

PROJECT:
MULTI-FAMILY HOUSING

150 S BAYLEN STREET
(CORNER OF BAYLEN & INTENDENCIA)

-PRELIMINARY-
NOT FOR
CONSTRUCTION

PROJECT NO. : 20021
SHEET TITLE:
SITE PLAN

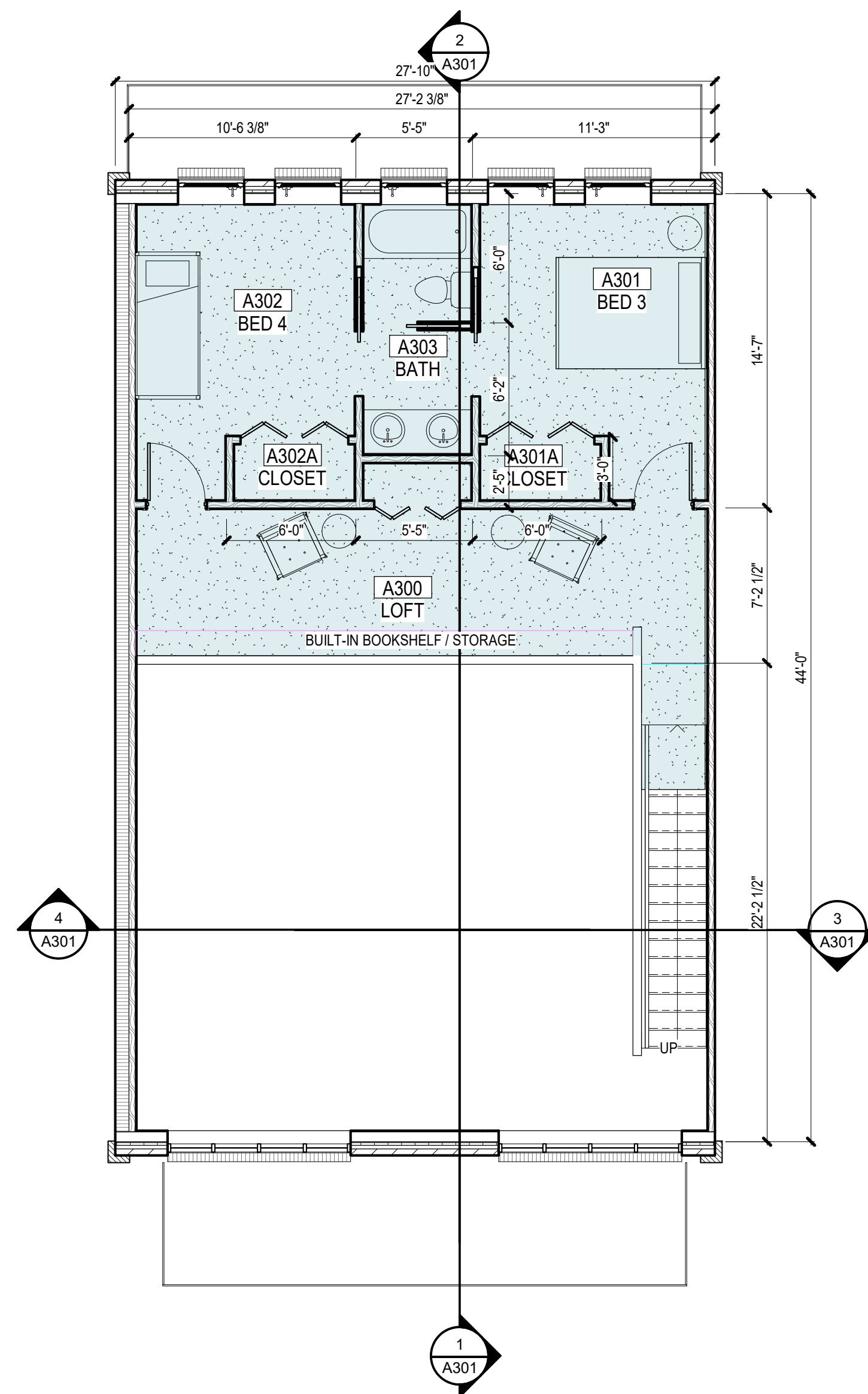
SHEET NUMBER:

A100

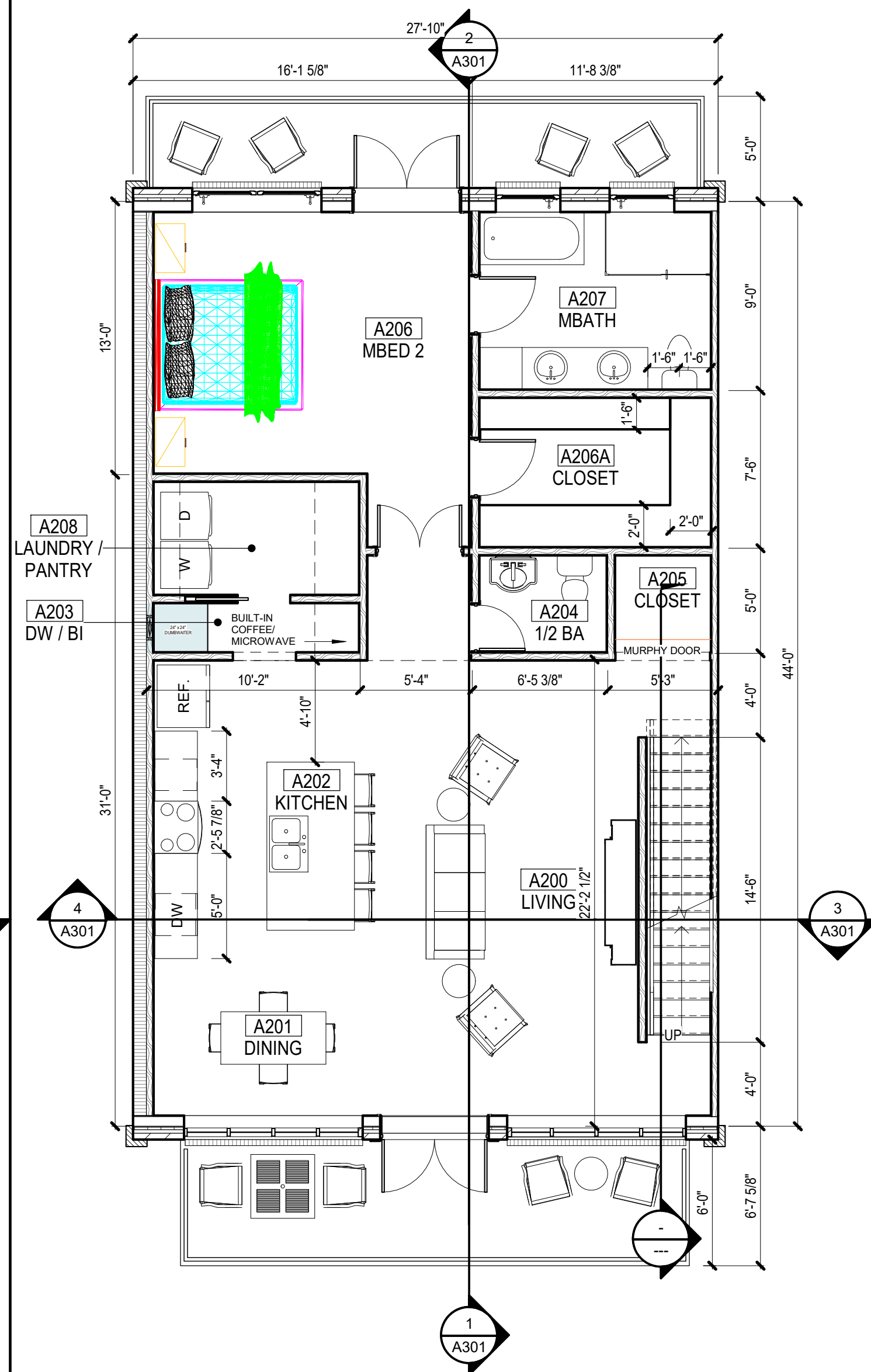
SCHEMATIC DESIGN

UNIT A1
4 BEDROOM / 3 1/2 BATH
2212 SF CONDITIONED SPACE
646 SF - 2 CAR GARAGE
2858 SF TOTAL

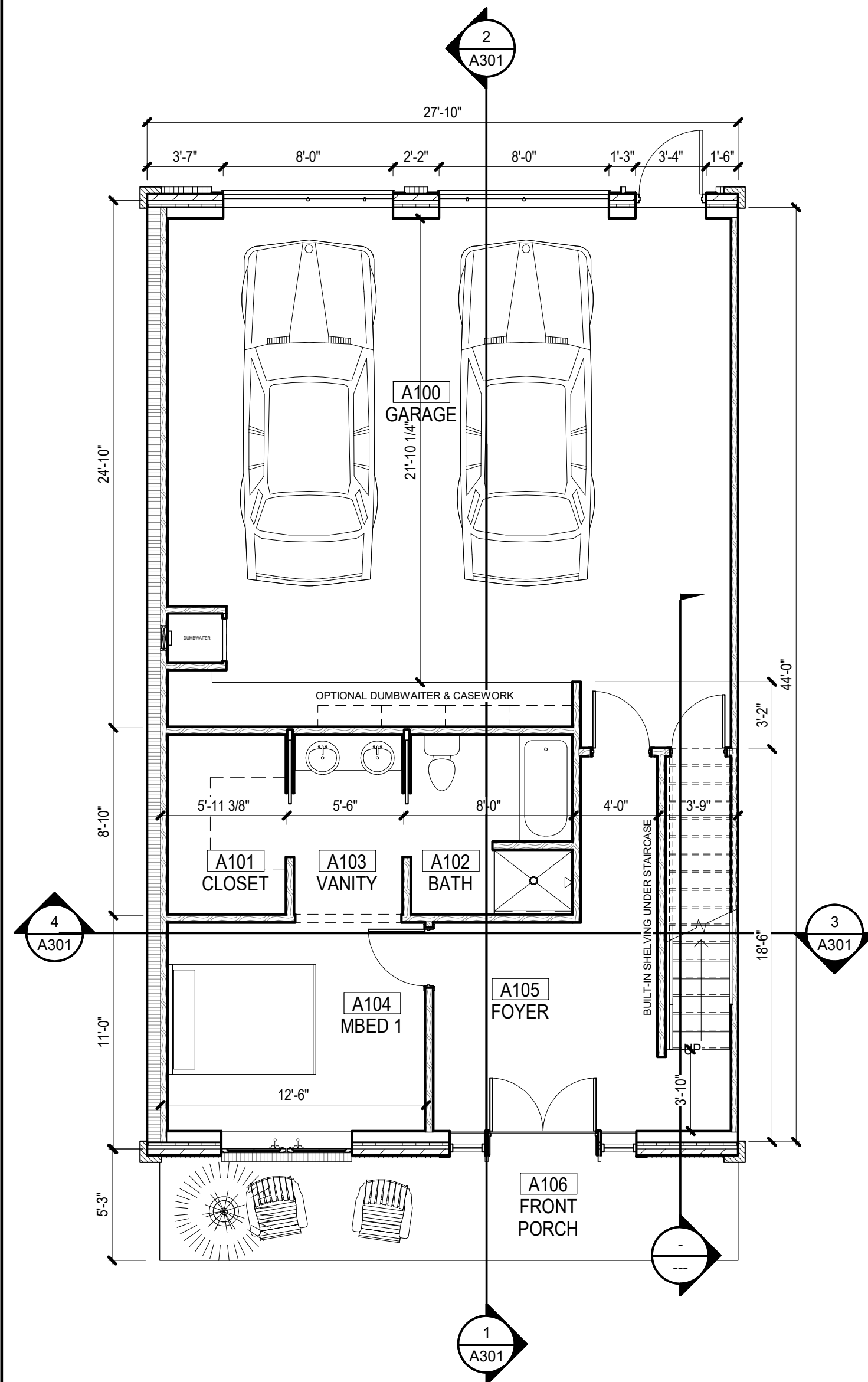
572 SF



1137 SF



503 SF CONDITIONED
646 SF UNCONDITIONED



KEYNOTES

CALDWELL
ASSOCIATES | ARCHITECTS

116 N TARRAGONA STREET, PENSACOLA, FL 32502
(850) 432 9500 | CALDWELL-ASSOC.COM

License No: AA26000721 | License No: 180000995

PROJECT ISSUES:
CONCEPT PLANS 06.19.2020
SCHEMATIC DESIGN 07.14.2020
SCHEMATIC DESIGN 2 08.19.2020
SCHEMATIC DESIGN 3 08.28.2020
SCHEMATIC DESIGN 4 09.10.2020

LEGEND

- CAST-IN-PLACE CONCRETE WALL
- CONCRETE MASONRY UNIT WALL; SEE WALL TYPE
- METAL STUD WALL; SEE WALL TYPE
- DRINKING FOUNTAIN, SEE PLUMBING DRAWINGS
- WATER COOLER (NIC) SEE ENGINEERING DRAWING FOR UTILITY CONNECTIONS
- EXISTING CONSTRUCTION
- NEW METAL STUD FRAMING; SEE WALL TYPES OR DETAILS FOR MORE INFORMATION

PROJECT TEAM:
CIVIL KEN HORNE & ASSOCIATES
STRUCTURAL JOE DEREUIL & ASSOCIATES
ARCHITECTURAL CALDWELL ASSOC. ARCHITECTS
FIRE PROTECTION W3 ENGINEERING
PLUMBING W3 ENGINEERING
MECHANICAL W3 ENGINEERING
ELECTRICAL W3 ENGINEERING

PROJECT:
BAYLEN STREET
TOWNHOMES

150 S BAYLEN STREET
PENSACOLA, FLORIDA
(BAYLEN & INTENDENCIA)

-PRELIMINARY -
NOT FOR
CONSTRUCTION

GENERAL NOTES

- REFER TO WALL TYPE SHEET FOR MORE INFORMATION
- CONTRACTOR SHALL COORDINATE WITH ALL TRADES PRIOR TO COMMENCING WORK.
- COORDINATE WITH MECHANICAL, PLUMBING, ELECTRICAL, TELECOM AND SECURITY PRIOR TO COMMENCING ANY WORK.
- SEE LIFE SAFETY PLAN FOR LOCATION OF FIRE EXTINGUISHERS
- ALL FURNITURE N.I.C. UNLESS NOTED OTHERWISE.

PROJECT NO. : 20021
SHEET TITLE:
UNIT A FLOOR PLANS

SHEET NUMBER:

A101

SCHEMATIC DESIGN

4 BEDROOM / 3 1/2 BATH
2146 SF CONDITIONED SPACE
373 SF - 2 CAR GARAGE
2519 SF TOTAL

Floor plan of a three-story building showing units B300 through B311. Unit B300 is highlighted in green and labeled 'MBDRM 2' with a green arrow pointing to it. The plan includes dimensions for each unit and common areas, as well as room labels like 'CLOSET', 'BATH', 'LAUNDRY', and 'HALLWAY'. A green arrow points to the green-highlighted unit B300.

TRUE NORTH
PROJECT NORTH

3
A202 A102



03B - 3rd FFE

3/16" = 1'-0"

4' 2' 0' 4' 8'


Floor Plan Details:

- Rooms and Areas:**
 - B201 DINING
 - B202 KITCHEN (includes REF., DW, and FULL HEIGHT CABINETS / PANTRY)
 - B203 LIVING
 - B204 PWDR RM
 - B205 CLOSET
- Dimensions:**
 - Overall Width: 22'-0"
 - Overall Depth: 48'-5"
 - Room Widths (from top): 11'-10", 10'-2", 5'-2", 5'-9", 5'-8", 13'-5", 4'-4", 5'-4", 9'-3", 5'-7", 6'-3"
 - Room Depths (from left): 48'-5", 4'-4", 5'-4", 9'-3", 5'-7", 6'-3"
- Other Features:**
 - Staircase labeled "UP"
 - Room markers: 1 A302, 2 A302, 3 A302, 4 A302

2	
A202	A102

02B - 2nd FFE

3/16" = 1'-0"
 

This floor plan shows a two-car garage (B100) with a total width of 22'-0" and a depth of 18'-11". The garage has an 18' GARAGE DOOR at the bottom. Above the garage is a bathroom (B101) with a toilet and sink, and a closet (B102). To the right of the bathroom is a hallway (B104) leading to a bedroom (B103) and a storage area (B105). The plan includes various dimensions for rooms and hallways, as well as section cut symbols (1, 2, 3, 4) and a north arrow.

Room Schedule:



Room Number	Room Name
B100	GARAGE
B101	BATH
B102	CLOSET
B103	BDRM 1
B104	HALLWAY
B105	STORAGE

Dimensions:

- Overall Width: 22'-0"
- Overall Depth: 18'-11"
- Garage Door Width: 18'
- Garage Depth: 18'-11"
- Bathroom Width: 3'-5 1/8"
- Bathroom Depth: 3'-5"
- Bedroom Width: 10'-0"
- Bedroom Depth: 9'-3"
- Hallway Width: 7'-4"
- Hallway Depth: 4'-10 1/4"
- Storage Width: 4'-8"
- Storage Depth: 19'-1"


Section Cuts:

- 1 A302 (Top Center)
- 2 A302 (Bottom Center)
- 3 A302 (Right Side)
- 4 A302 (Left Side)

1	
A202	A102

01B - 1st FFE

3/16" = 1'-0"
 

CALDWELL
ASSOCIATES | ARCHITECTS

116 N TARRAGONA STREET, PENSACOLA, FL 32502
(850) 432 9500 | CALDWELL-ASSOC.COM

License No: AA26000721 | License No: IB0000995

CONCEPT PLANS	06.19.2020
SCHEMATIC DESIGN	07.14.2020
SCHEMATIC DESIGN 2	08.19.2020
SCHEMATIC DESIGN 3	08.28.2020
SCHEMATIC DESIGN 4	09.10.2020

	CAST-IN-PLACE CONCRETE WALL
	CONCRETE MASONRY UNIT WALL; SEE WALL TYPE
	METAL STUD WALL; SEE WALL TYPE
DF	DRINKING FOUNTAIN, SEE PLUMBING DRAWINGS
H2O	WATER COOLER (NIC) SEE ENGINEERING DRAWING FOR UTILITY CONNECTIONS
	EXISTING CONSTRUCTION
	NEW METAL STUD FRAMING; SEE WALL TYPES OR DETAILS FOR MORE INFORMATION

CIVIL
KEN HORNE & ASSOCIATES
STRUCTURAL
JOE DEREUIL & ASSOCIATES
ARCHITECTURAL
CALDWELL ASSOC. ARCHITECTS
FIRE PROTECTION
W3 ENGINEERING
PLUMBING
W3 ENGINEERING
MECHANICAL
W3 ENGINEERING
ELECTRICAL
W3 ENGINEERING

BAYLEN STREET TOWNHOMES

**150 S BAYLEN STREET
PENSACOLA, FLORIDA
BAYLEN &
INTENDENCIA)**

**-PRELIMINARY-
NOT FOR
CONSTRUCTION**

1. REFER TO WALL TYPE SHEET FOR MORE INFORMATION
2. CONTRACTOR SHALL COORDINATE WITH ALL TRADES PRIOR TO COMMENCING WORK.
3. COORDINATE WITH MECHANICAL, PLUMBING, ELECTRICAL, TELECOM AND SECURITY PRIOR TO COMMENCING ANY WORK.
4. SEE LIFE SAFETY PLAN FOR LOCATION OF FIRE EXTINGUISHERS
5. ALL FURNITURE N.I.C. UNLESS NOTED OTHERWISE.

SHEET TITLE:

UNIT B FLOOR PLANS

SHEET NUMBER:

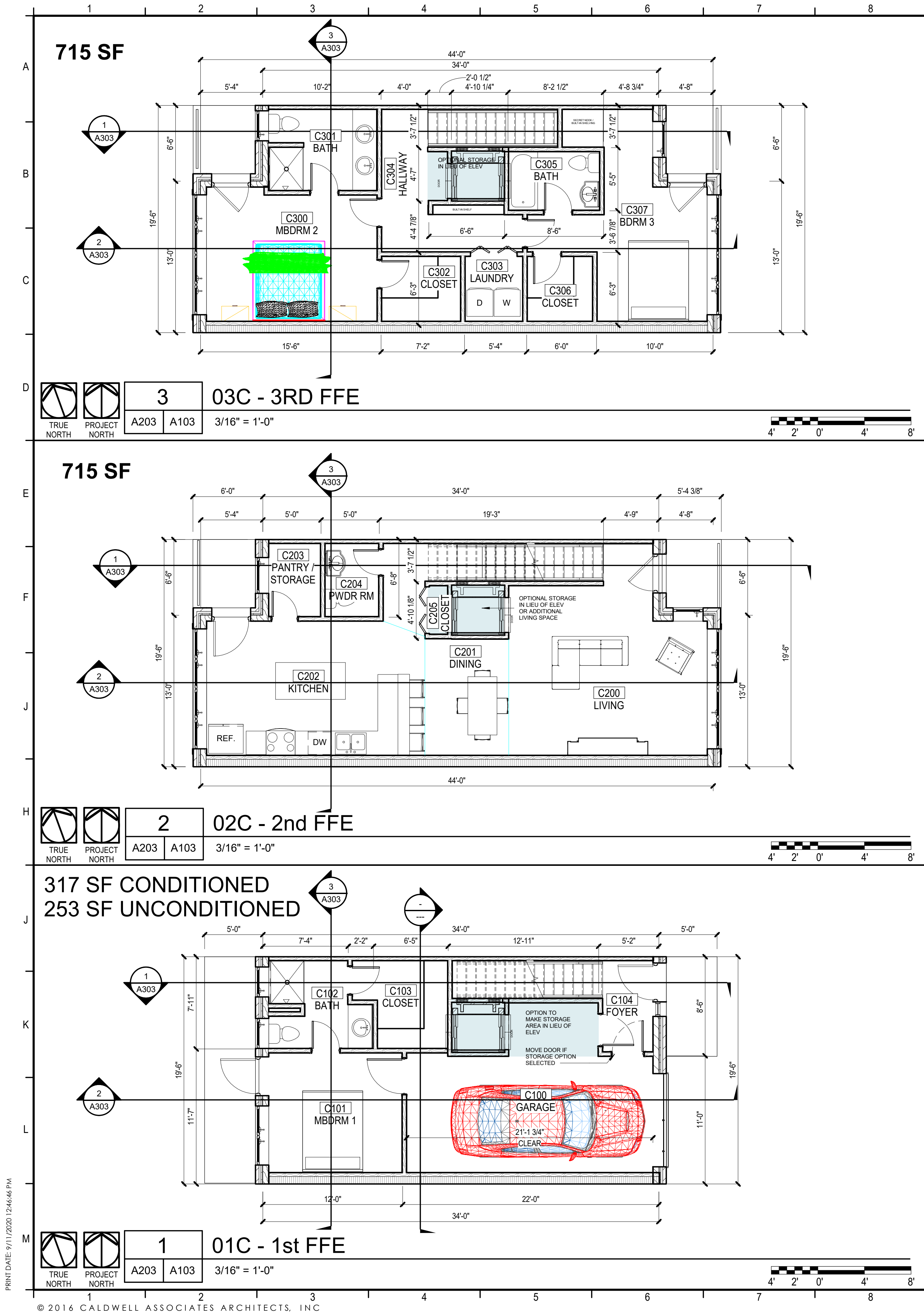
A102

SCHEMATIC DESIGN

DO NOT SCALE DRAWINGS

PRINT DATE: 9/11/2020 12:06:49 PM

© 2016 CALDWELL ASSOCIATES ARCHITECTS, INC.



UNIT C1

3 BEDROOM / 3 1/2 BATH

1747 SF CONDITIONED SPACE

253 SF - 1 CAR GARAGE

2000 SF TOTAL

KEYNOTES

LEGEND

- CAST-IN-PLACE CONCRETE WALL
- CONCRETE MASONRY UNIT WALL; SEE WALL TYPE
- METAL STUD WALL; SEE WALL TYPE
- DRINKING FOUNTAIN, SEE PLUMBING DRAWINGS
- WATER COOLER (NIC) SEE ENGINEERING DRAWING FOR UTILITY CONECTIONS
- EXISTING CONSTRUCTION
- NEW METAL STUD FRAMING; SEE WALL TYPES OR DETAILS FOR MORE INFORMATION

GENERAL NOTES

1. REFER TO WALL TYPE SHEET FOR MORE INFORMATION
2. CONTRACTOR SHALL COORDINATE WITH ALL TRADES PRIOR TO COMMENCING WORK.
3. COORDINATE WITH MECHANICAL, PLUMBING, ELECTRICAL, TELECOM AND SECURITY PRIOR TO COMMENCING ANY WORK.
4. SEE LIFE SAFETY PLAN FOR LOCATION OF FIRE EXTINGUISHERS
5. ALL FURNITURE N.I.C. UNLESS NOTED OTHERWISE.

CALDWELL ASSOCIATES | ARCHITECTS

116 N TARRAGONA STREET, PENSACOLA, FL 32502
(850) 432 9500 | CALDWELL-ASSOC.COM

License No: AA26000721 | License No: 180000995

PROJECT ISSUES:

CONCEPT PLANS	06.19.2020
SCHEMATIC DESIGN	07.14.2020
SCHEMATIC DESIGN 2	08.19.2020
SCHEMATIC DESIGN 3	08.28.2020
SCHEMATIC DESIGN 4	09.10.2020

PROJECT TEAM:

CIVIL	KEN HORNE & ASSOCIATES
STRUCTURAL	JOE DEREUIL & ASSOCIATES
ARCHITECTURAL	CALDWELL ASSOC. ARCHITECTS
FIRE PROTECTION	W3 ENGINEERING
PLUMBING	W3 ENGINEERING
MECHANICAL	W3 ENGINEERING
ELECTRICAL	W3 ENGINEERING

PROJECT:

BAYLEN STREET TOWNHOMES

150S BAYLEN STREET
PENSACOLA, FLORIDA
(BAYLEN & INTENDENCIA)

-PRELIMINARY -
NOT FOR
CONSTRUCTION

PROJECT NO. : 20021
SHEET TITLE:

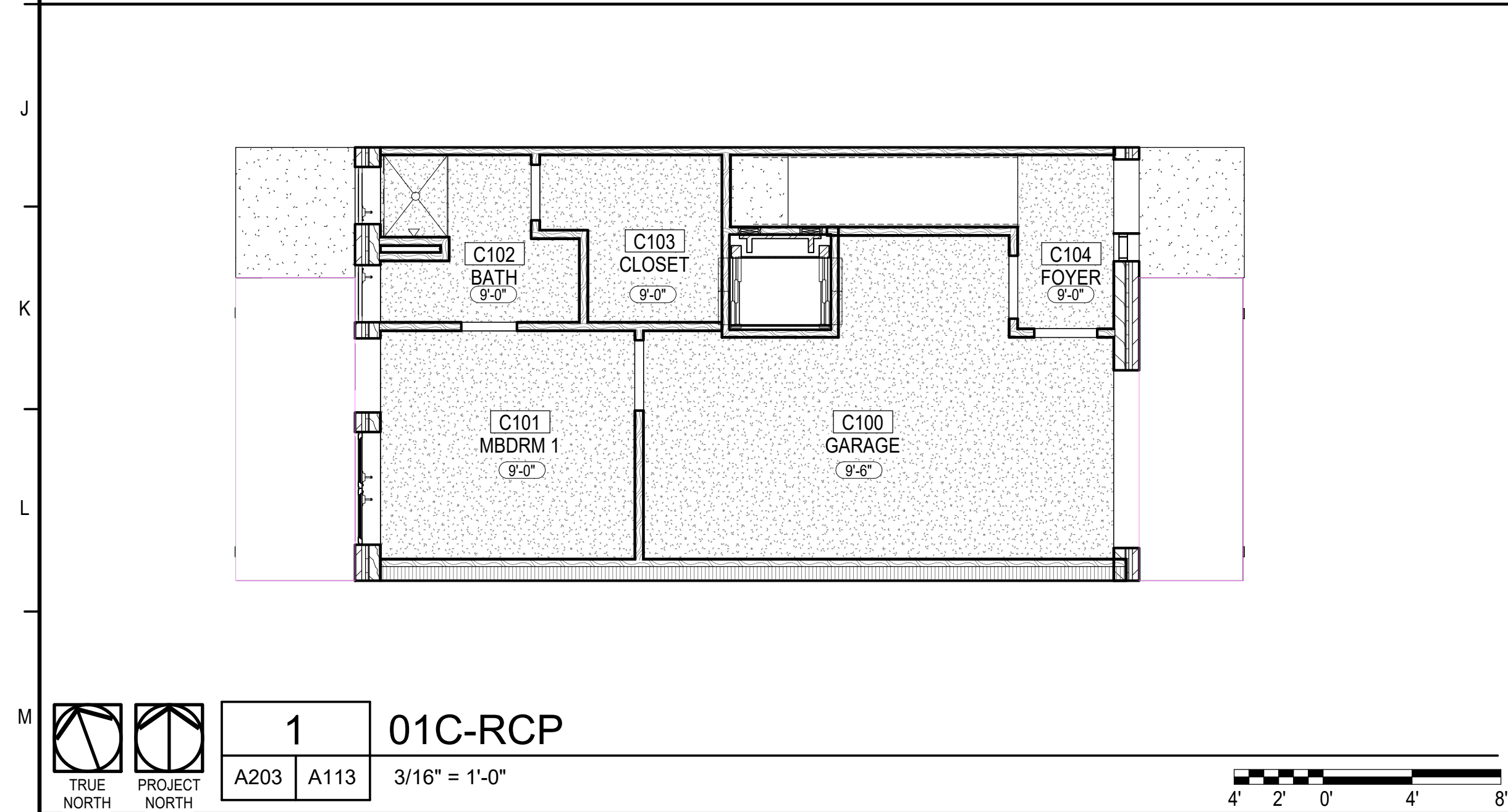
NEW WORK FLOOR PLAN

SHEET NUMBER:

A103

SCHEMATIC DESIGN

DO NOT SCALE DRAWINGS



1. CONTRACTOR SHALL FIELD VERIFY EXACT BUILT CONDITIONS PRIOR TO COMMENCING WORK.
2. CONTRACTOR SHALL COORDINATE WITH ALL TRADES PRIOR TO INSTALLING ANY CEILING MOUNTED DEVICE.
3. COORDINATE WITH MECHANICAL, ELECTRICAL, FIRE ALARM AND PLUMBING DRAWINGS PRIOR TO INSTALLING ANY DEVICE ON THE CEILING OR WALLS.
4. PROVIDE MOISTURE RESISTANT CEILING TILE IN RESTROOM AND JANITOR'S CLOSET, U.N.O. REFER TO FINISH SCHEDULE

CONCEPT PLANS	06.19.2020
SCHEMATIC DESIGN	07.14.2020
SCHEMATIC DESIGN 2	08.19.2020
SCHEMATIC DESIGN 3	08.28.2020
SCHEMATIC DESIGN 4	09.10.2020

CIVIL
KEN HORNE & ASSOCIATES
STRUCTURAL
JOE DEREUL & ASSOCIATES
ARCHITECTURAL
CALDWELL ASSOC. ARCHITECTS
FIRE PROTECTION
W3 ENGINEERING
PLUMBING
W3 ENGINEERING
MECHANICAL
W3 ENGINEERING
ELECTRICAL
W3 ENGINEERING

BAYLEN STREET TOWNHOMES

**150S BAYLEN STREET
PENSACOLA, FLORIDA
(BAYLEN &
INTENDENCIA)**

**-PRELIMINARY-
NOT FOR
CONSTRUCTION**

PROJECT NO. : 20021
SHEET TITLE:
UNIT C - REFLECTED CEILING
PLAN

SHEET NUMBER:

A113

SCHEMATIC DESIGN



2 A201 - VIEW 1
A200 NOT TO SCALE



1 A201 - VIEW 2
A200 NOT TO SCALE

10/5/2020 1:42:34 PM
PRINT DATE:

CALDWELL
ASSOCIATES | ARCHITECTS

116 N TARRAGONA STREET, PENSACOLA, FL
(850) 432 9500 | WWW.CALDWELL-ASSOC.COM

License No: AA26000721 | License No: 1B0000995

PROJECT ISSUES:
CONCEPT PLANS 06.19.2020
SCHEMATIC DESIGN 07.14.2020
SCHEMATIC DESIGN 2 08.19.2020
SCHEMATIC DESIGN 3 08.28.2020

PROJECT TEAM:
CIVIL KEN HORNE & ASSOCIATES
STRUCTURAL JOE DEREUIL & ASSOCIATES
ARCHITECTURAL CALDWELL ASSOC. ARCHITECTS
FIRE PROTECTION W3 ENGINEERING
PLUMBING W3 ENGINEERING
MECHANICAL W3 ENGINEERING
ELECTRICAL W3 ENGINEERING
LANDSCAPE EKISTICS DESIGN STUDIO, INC

PROJECT:
MULTI-FAMILY HOUSING

150 S BAYLEN STREET
(CORNER OF BAYLEN &
INTENDENCIA)

PRELIMINARY-
NOT FOR
CONSTRUCTION

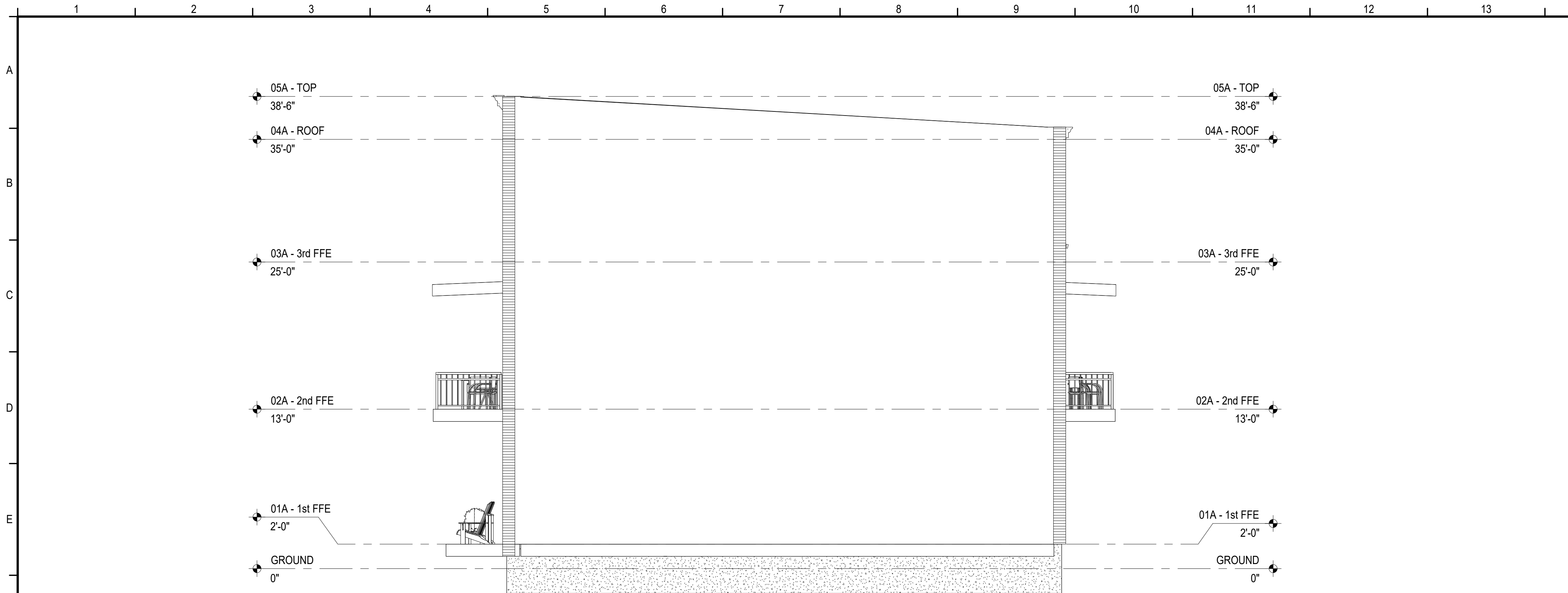
PROJECT NO. : 20021
SHEET TITLE:
3D VIEWS

SHEET NUMBER:

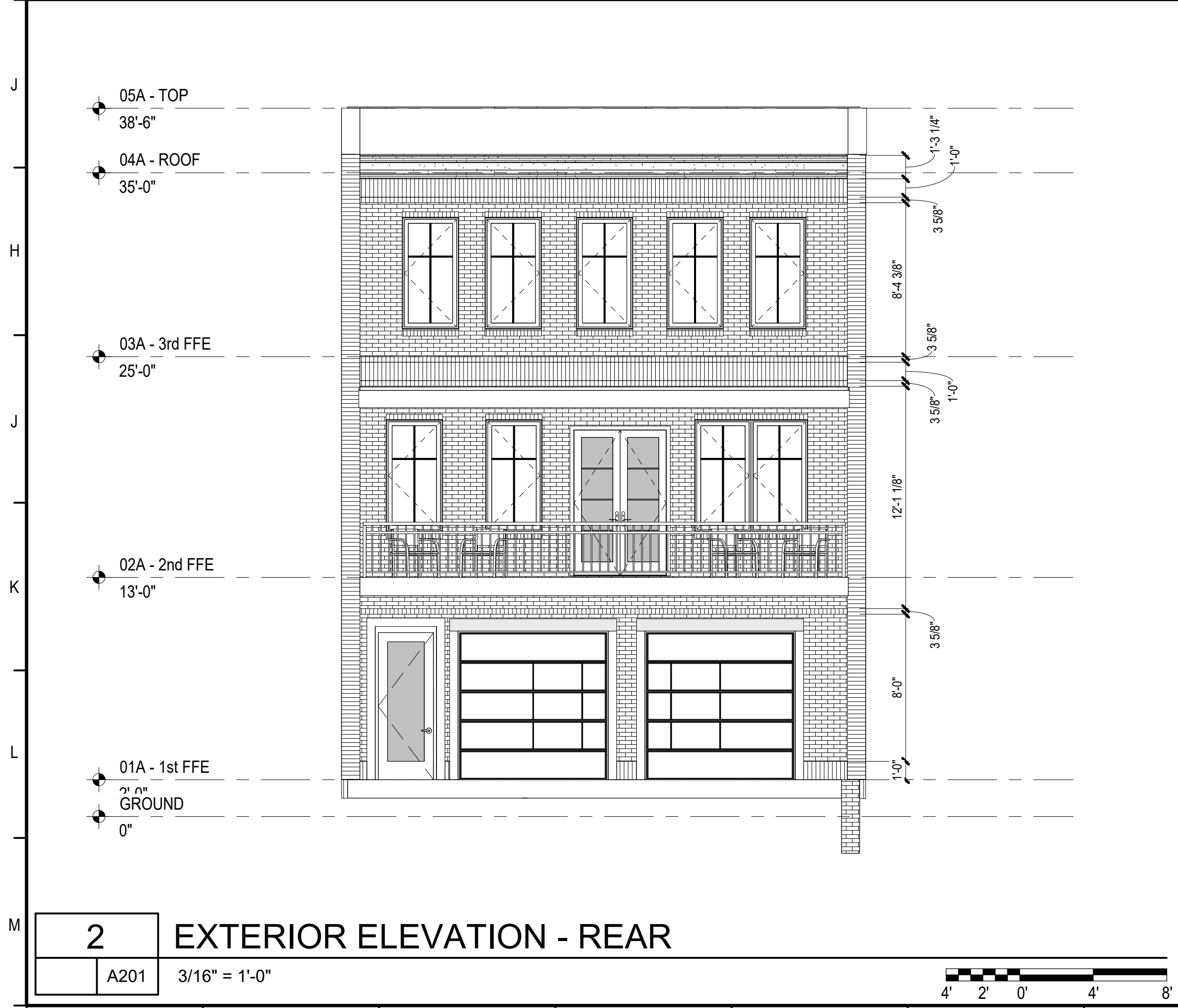
A200

SCHEMATIC DESIGN

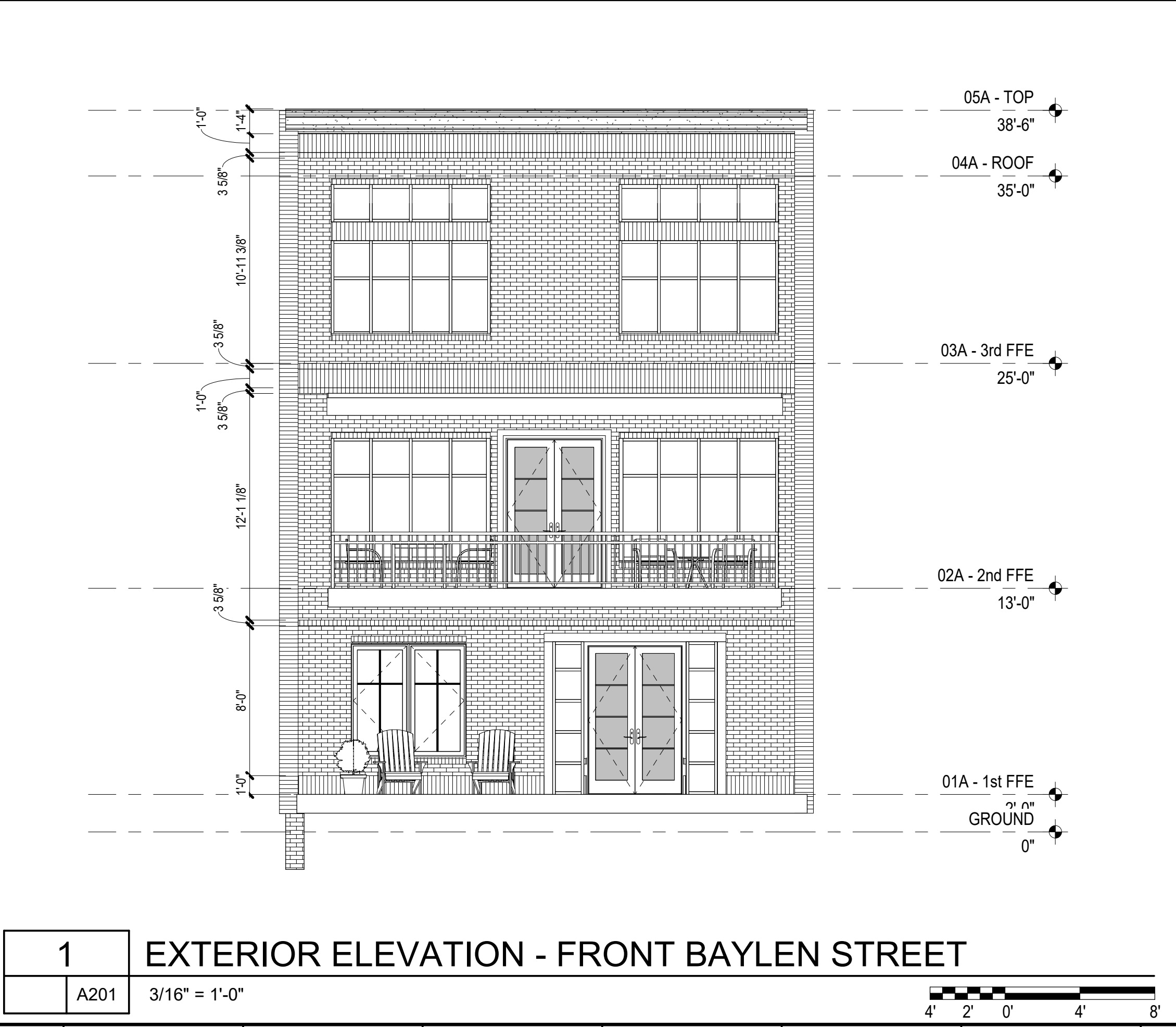
PRINT DATE: 9/11/2020 10:18:57 AM



3 EXTERIOR ELEVATION - SIDES
A201 3/16" = 1'-0"



2 EXTERIOR ELEVATION - REAR
A201 3/16" = 1'-0"



1 EXTERIOR ELEVATION - FRONT BAYLEN STREET
A201 3/16" = 1'-0"

KEYNOTES

CALDWELL
ASSOCIATES | ARCHITECTS

116 N TARRAGONA STREET, PENSACOLA, FL 32502
(850) 432 9500 | CALDWELL-ASSOC.COM

License No: AA26000721 | License No: 180000995

PROJECT ISSUES:

CONCEPT PLANS	06.19.2020
SCHEMATIC DESIGN	07.14.2020
SCHEMATIC DESIGN 2	08.19.2020
SCHEMATIC DESIGN 3	08.28.2020
SCHEMATIC DESIGN 4	09.10.2020

PROJECT TEAM:

CIVIL
KEN HORNE & ASSOCIATES

STRUCTURAL
JOE DEREUIL & ASSOCIATES

ARCHITECTURAL
CALDWELL ASSOC. ARCHITECTS

FIRE PROTECTION
W3 ENGINEERING

PLUMBING
W3 ENGINEERING

MECHANICAL
W3 ENGINEERING

ELECTRICAL
W3 ENGINEERING

PROJECT:
BAYLEN STREET
TOWNHOMES

150 S BAYLEN STREET
PENSACOLA, FLORIDA
(BAYLEN & INTENDENCIA)

-PRELIMINARY -
NOT FOR
CONSTRUCTION

GENERAL NOTES

- COORDINATE WITH ROOM FINISH SCHEDULE AND FINISH INDEX FOR FINISHES OF ALL SURFACES NOT OUTLINED ON THESE DRAWINGS.
- ALL BRICK VENEER TO HAVE CLEAR BLOCK SEALER @ ALL EXPOSED MASONRY SURFACES
- SEE DETAILS FOR TYPICAL CONTROL JOINT DETAIL
- SUBMIT PRODUCT LITERATURE, CERTIFICATIONS, TEST REPORTS & FULL MATERIAL SAMPLES OF EACH COLOR SPECIFIED.

PROJECT NO. : 20021
SHEET TITLE:
EXTERIOR ELEVATIONS

SHEET NUMBER:
A201
SCHEMATIC DESIGN



KEYNOTES

CALDWELL
ASSOCIATES | ARCHITECTS

116 N TARRAGONA STREET, PENSACOLA, FL 32502
(850) 432 9500 | CALDWELL-ASSOC.COM

License No: AA26000721 | License No: 180000995

PROJECT ISSUES:	
CONCEPT PLANS	06.19.2020
SCHEMATIC DESIGN	07.14.2020
SCHEMATIC DESIGN 2	08.19.2020
SCHEMATIC DESIGN 3	08.28.2020
SCHEMATIC DESIGN 4	09.10.2020

PROJECT TEAM:	
CIVIL	KEN HORNE & ASSOCIATES
STRUCTURAL	JOE DEREUIL & ASSOCIATES
ARCHITECTURAL	CALDWELL ASSOC. ARCHITECTS
FIRE PROTECTION	W3 ENGINEERING
PLUMBING	W3 ENGINEERING
MECHANICAL	W3 ENGINEERING
ELECTRICAL	W3 ENGINEERING

PROJECT:
**BAYLEN STREET
TOWNHOMES**

**150 S BAYLEN STREET
PENSACOLA, FLORIDA
(BAYLEN &
INTENDENCIA)**

**-PRELIMINARY -
NOT FOR
CONSTRUCTION**

GENERAL NOTES

- COORDINATE WITH ROOM FINISH SCHEDULE AND FINISH INDEX FOR FINISHES OF ALL SURFACES NOT OUTLINED ON THESE DRAWINGS.
- ALL BRICK VENEER TO HAVE CLEAR BLOCK SEALER @ ALL EXPOSED MASONRY SURFACES
- SEE DETAILS FOR TYPICAL CONTROL JOINT DETAIL
- SUBMIT PRODUCT LITERATURE, CERTIFICATIONS, TEST REPORTS & FULL MATERIAL SAMPLES OF EACH COLOR SPECIFIED.

PROJECT NO. : 20021
SHEET TITLE: ELEVATIONS

SHEET NUMBER:
A202
SCHEMATIC DESIGN



KEYNOTES

CALDWELL
ASSOCIATES | ARCHITECTS

116 N TARRAGONA STREET, PENSACOLA, FL 32502
(850) 432 9500 | CALDWELL-ASSOC.COM

License No: AA26000721 | License No: 180000995

PROJECT ISSUES:	
CONCEPT PLANS	06.19.2020
SCHEMATIC DESIGN	07.14.2020
SCHEMATIC DESIGN 2	08.19.2020
SCHEMATIC DESIGN 3	08.28.2020
SCHEMATIC DESIGN 4	09.10.2020

PROJECT TEAM:	
CIVIL	KEN HORNE & ASSOCIATES
STRUCTURAL	JOE DEREUIL & ASSOCIATES
ARCHITECTURAL	CALDWELL ASSOC. ARCHITECTS
FIRE PROTECTION	W3 ENGINEERING
PLUMBING	W3 ENGINEERING
MECHANICAL	W3 ENGINEERING
ELECTRICAL	W3 ENGINEERING

PROJECT:
BAYLEN STREET
TOWNHOMES

150S BAYLEN STREET
PENSACOLA, FLORIDA
(BAYLEN &
INTENDENCIA)

-PRELIMINARY -
NOT FOR
CONSTRUCTION

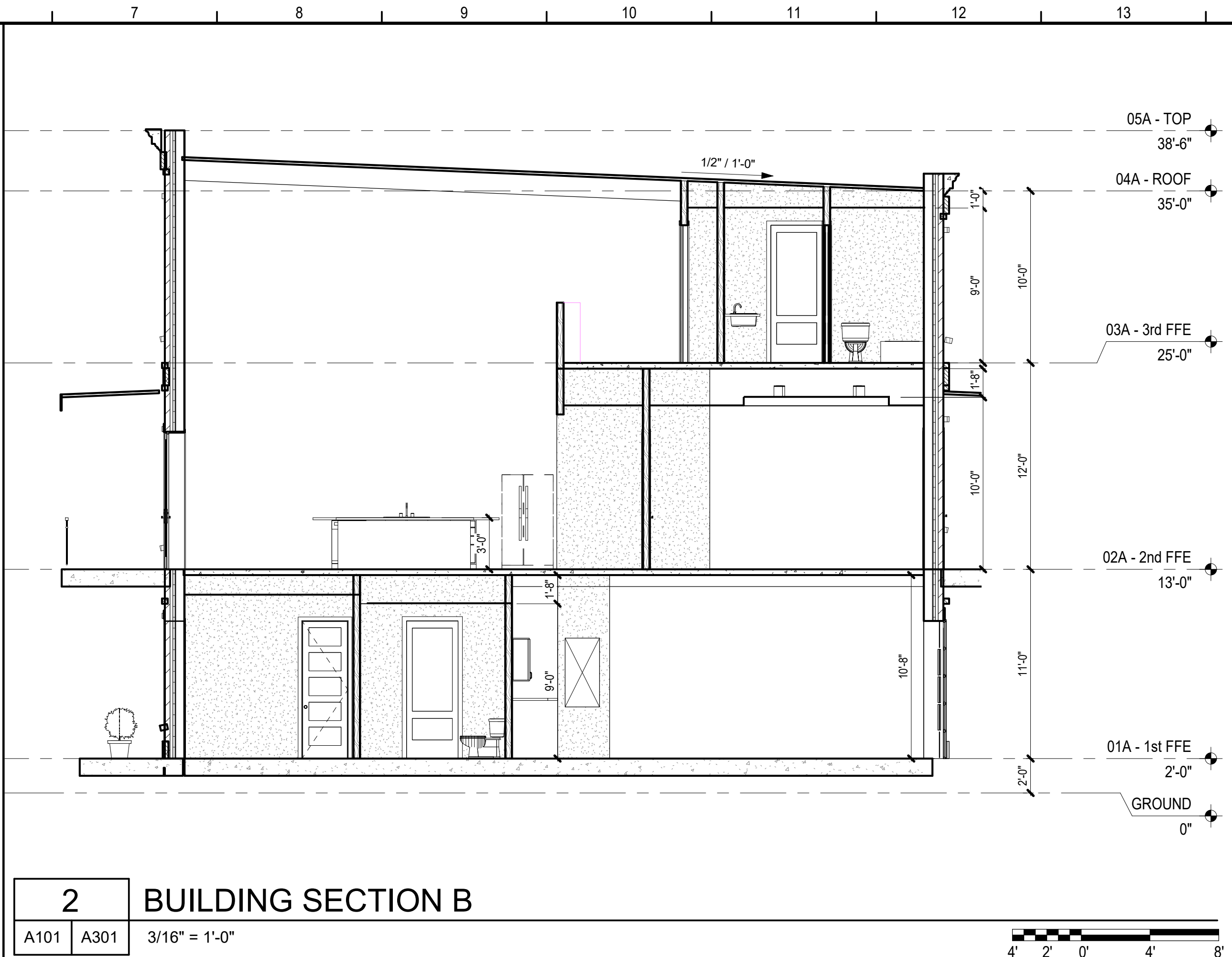
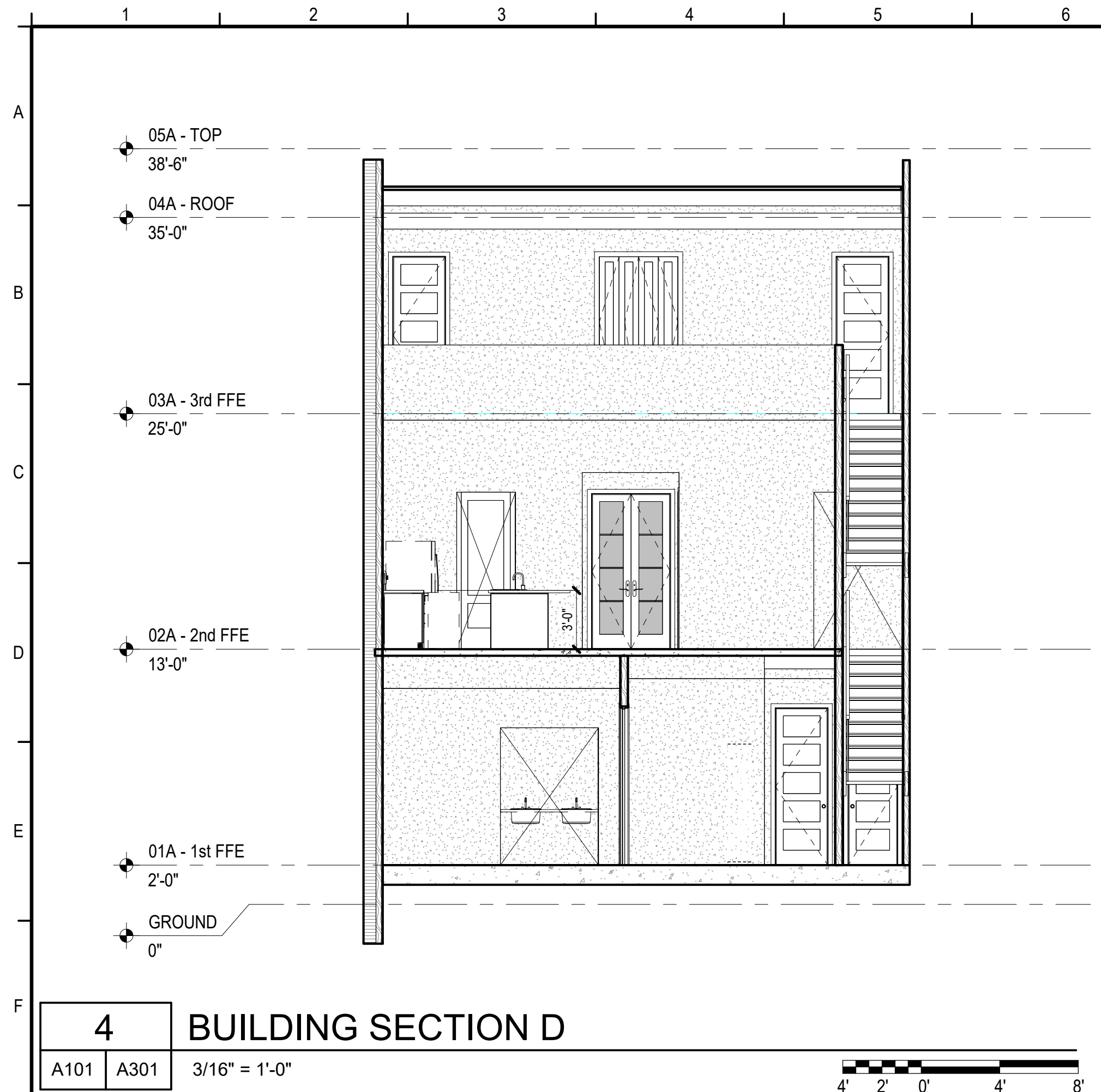
GENERAL NOTES

- COORDINATE WITH ROOM FINISH SCHEDULE AND FINISH INDEX FOR FINISHES OF ALL SURFACES NOT OUTLINED ON THESE DRAWINGS.
- ALL BRICK VENEER TO HAVE CLEAR BLOCK SEALER @ ALL EXPOSED MASONRY SURFACES
- SEE DETAILS FOR TYPICAL CONTROL JOINT DETAIL
- SUBMIT PRODUCT LITERATURE, CERTIFICATIONS, TEST REPORTS & FULL MATERIAL SAMPLES OF EACH COLOR SPECIFIED.

PROJECT NO. : 20021
SHEET TITLE:
EXTERIOR ELEVATIONS

SHEET NUMBER:
A203
SCHEMATIC DESIGN

PRINT DATE: 9/11/2020 10:38:44 AM



KEYNOTES

PROJECT ISSUES:

CONCEPT PLANS	06.19.2020
SCHEMATIC DESIGN	07.14.2020
SCHEMATIC DESIGN 2	08.19.2020
SCHEMATIC DESIGN 3	08.28.2020
SCHEMATIC DESIGN 4	09.10.2020

PROJECT TEAM:

CIVIL
KEN HORNE & ASSOCIATES

STRUCTURAL
JOE DEREUIL & ASSOCIATES

ARCHITECTURAL
CALDWELL ASSOC. ARCHITECTS

FIRE PROTECTION
W3 ENGINEERING

PLUMBING
W3 ENGINEERING

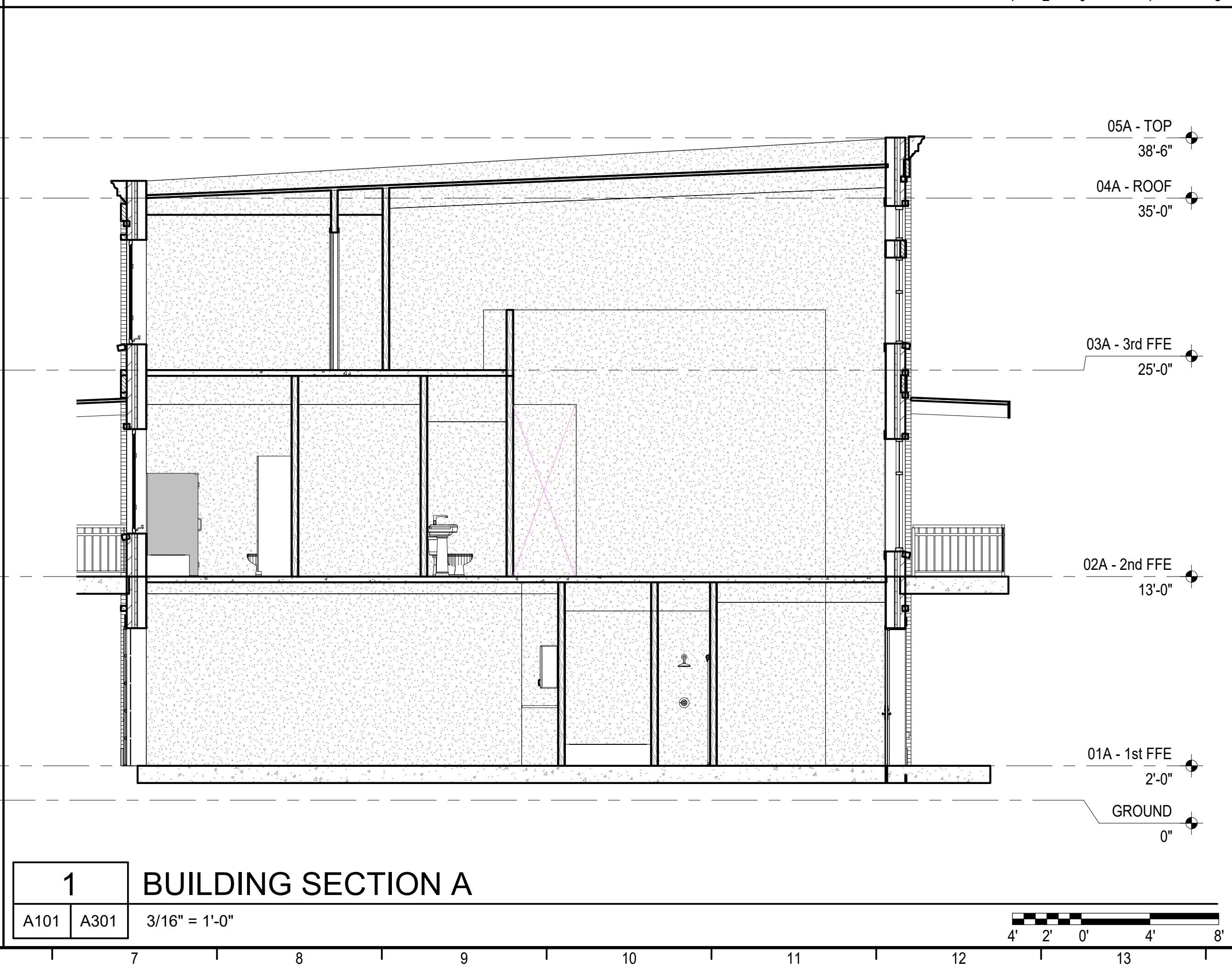
MECHANICAL
W3 ENGINEERING

ELECTRICAL
W3 ENGINEERING

PROJECT:

BAYLEN STREET TOWNHOMES

150 S BAYLEN STREET
PENSACOLA, FLORIDA
(BAYLEN & INTENDENCIA)



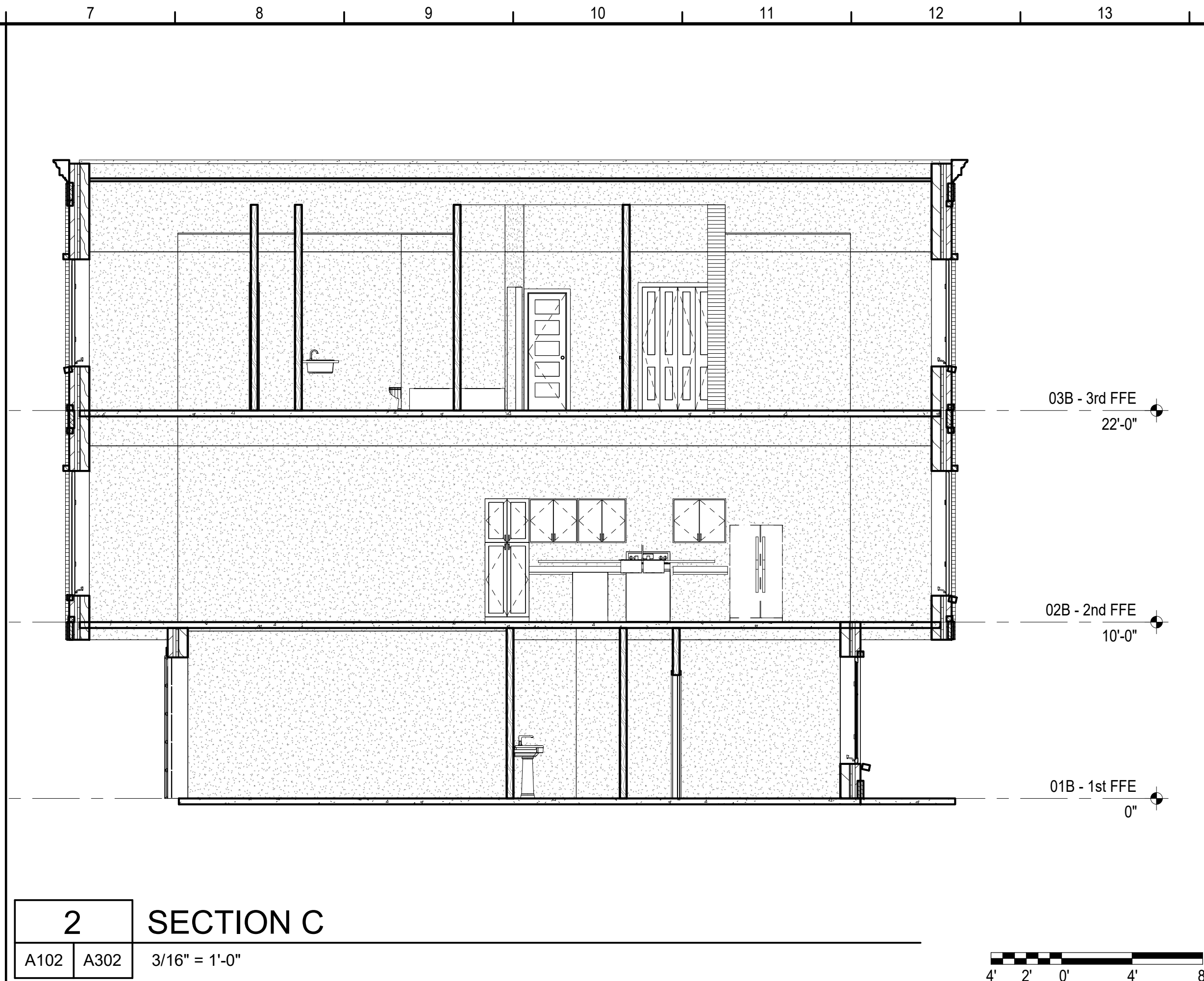
GENERAL NOTES

- STEEL STRUCTURE, INCLUDING BEAMS, TRUSSES, BAR JOISTS, BRACING, COLUMNS AND METAL DECKING SHALL BE PAINTED WHERE EXPOSED WITH EXCEPTIONS TO AREAS WHERE TENANT BUILDOUTS HAVE NOT YET BEEN CONSTRUCTED.
- CONTRACTOR SHALL COORDINATE WITH ALL TRADES PRIOR TO FINAL ROOFING INSTALLATION.
- REFER TO MECHANICAL, ELECTRICAL, PLUMBING AND TELECOM DRAWINGS FOR ADDITIONAL INFORMATION.
- ROOFING SURFACES SHALL MEET FLORIDA BUILDING ENERGY CODE FOR REFLECTANCE REQUIREMENTS.
- CONTRACTOR SHALL FOLLOW SMACNA STANDARDS FOR ALL ROOF TOP PENETRATIONS.
- REFER TO STRUCTURAL DRAWINGS FOR ADDITIONAL INFORMATION ON WIND FACTORS AND PRESSURES TO DESIGN THE ROOF SYSTEM AND COMPONENTS.
- SUBMIT PRODUCTS THAT MEET OR EXCEED WIND PRESSURES AS STATED ON STRUCTURAL DRAWINGS.
- ALL FASTENERS AND FLASHING COMPONENTS SHALL MATCH ADJACENT ROOF PANEL COLORS.

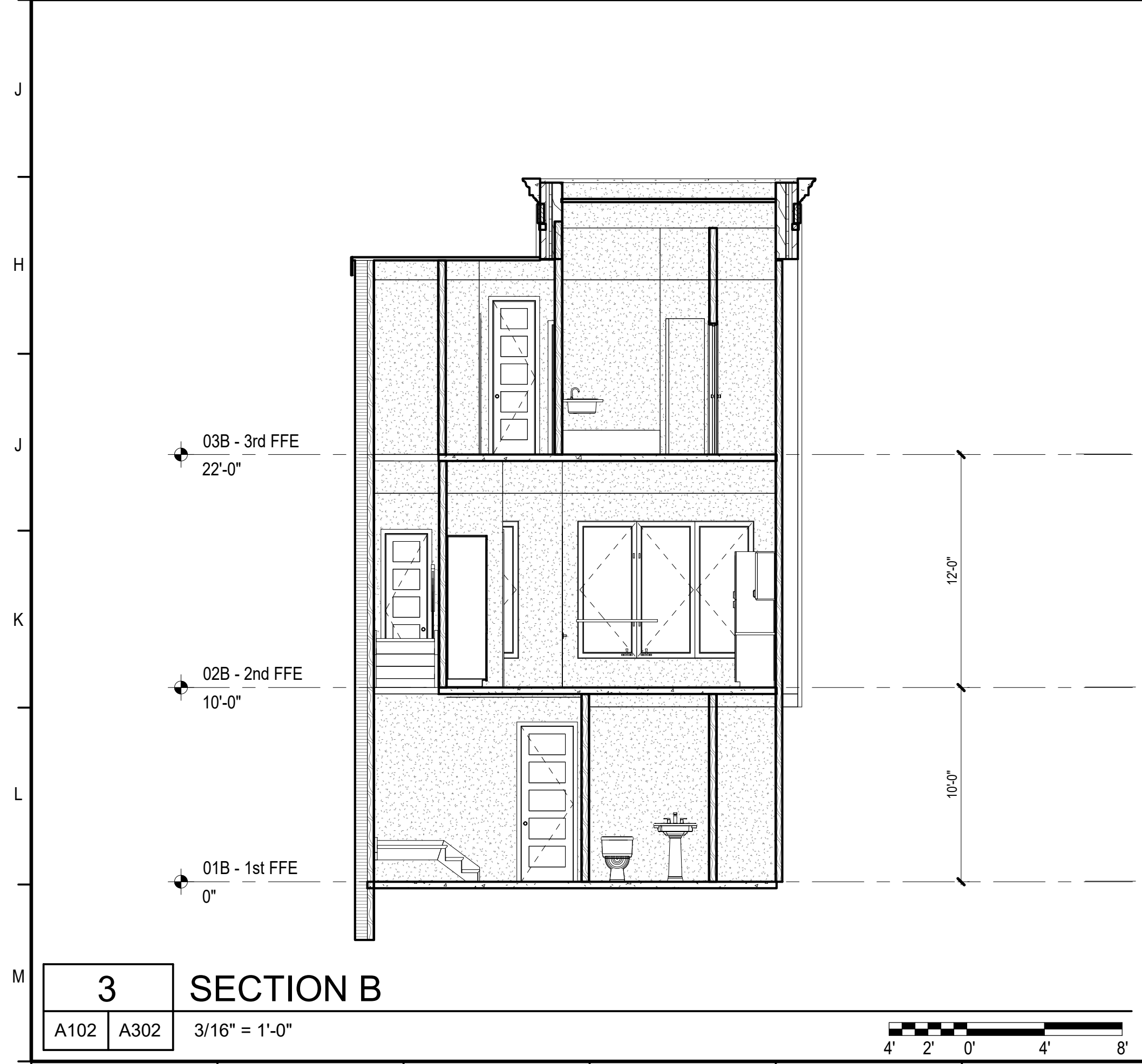
PRINT DATE: 9/11/2020 12:09:49 PM



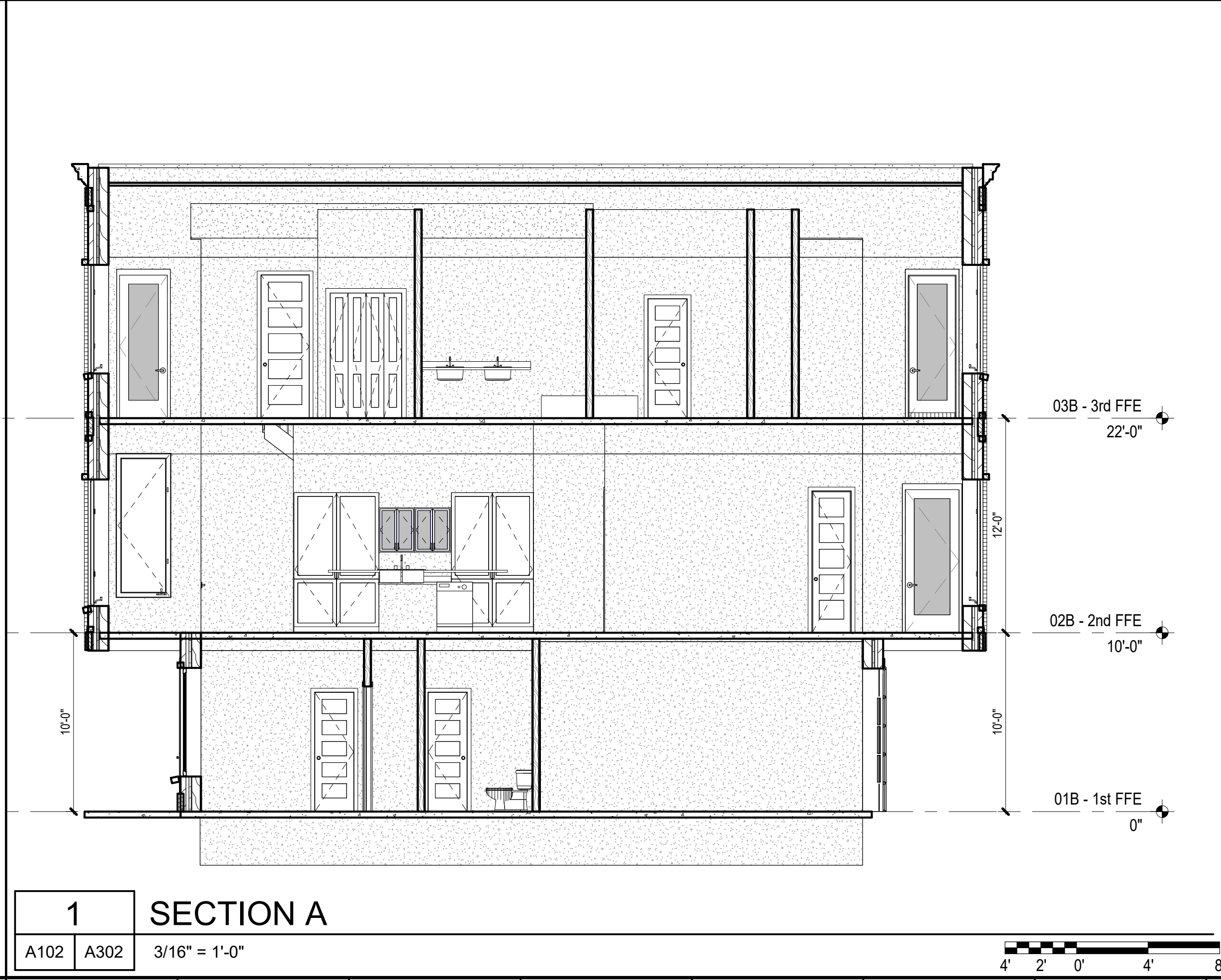
4 SECTION D
A102 A302 3/16" = 1'-0"



2 SECTION C
A102 A302 3/16" = 1'-0"



3 SECTION B
A102 A302 3/16" = 1'-0"



1 SECTION A
A102 A302 3/16" = 1'-0"

KEYNOTES

GENERAL NOTES

1. STEEL STRUCTURE, INCLUDING BEAMS, TRUSSES, BAR JOISTS, BRACING, COLUMNS AND METAL DECKING SHALL BE PAINTED WHERE EXPOSED WITH EXCEPTIONS TO AREAS WHERE TENANT BUILDOUTS HAVE NOT YET BEEN CONSTRUCTED.
2. CONTRACTOR SHALL COORDINATE WITH ALL TRADES PRIOR TO FINAL ROOFING INSTALLATION
3. REFER TO MECHANICAL, ELECTRICAL, PLUMBING AND TELECOM DRAWINGS FOR ADDITIONAL INFORMATION.
4. ROOFING SURFACES SHALL MEET FLORIDA BUILDING ENERGY CODE FOR REFLECTANCE REQUIREMENTS
5. CONTRACTOR SHALL FOLLOW SMACNA STANDARDS FOR ALL ROOF TOP PENETRATIONS.
6. REFER TO STRUCTURAL DRAWINGS FOR ADDITIONAL INFORMATION ON WIND FACTORS AND PRESSURES TO DESIGN THE ROOF SYSTEM AND COMPONENTS.
7. SUBMIT PRODUCTS THAT MEET OR EXCEED WIND PRESSURES AS STATED ON STRUCTURAL DRAWINGS.
8. ALL FASTENERS AND FLASHING COMPONENTS SHALL MATCH ADJACENT ROOF PANEL COLORS.

CALDWELL
ASSOCIATES | ARCHITECTS

116 N TARRAGONA STREET, PENSACOLA, FL 32502
(850) 432 9500 | CALDWELL-ASSOC.COM

License No: AA26000721 | License No: 180000995

PROJECT ISSUES:

CONCEPT PLANS	06.19.2020
SCHEMATIC DESIGN	07.14.2020
SCHEMATIC DESIGN 2	08.19.2020
SCHEMATIC DESIGN 3	08.28.2020
SCHEMATIC DESIGN 4	09.10.2020

PROJECT TEAM:

CIVIL	KEN HORNE & ASSOCIATES
STRUCTURAL	JOE DEREUIL & ASSOCIATES
ARCHITECTURAL	CALDWELL ASSOC. ARCHITECTS
FIRE PROTECTION	W3 ENGINEERING
PLUMBING	W3 ENGINEERING
MECHANICAL	W3 ENGINEERING
ELECTRICAL	W3 ENGINEERING

PROJECT:

BAYLEN STREET
TOWNHOMES

150 S BAYLEN STREET
PENSACOLA, FLORIDA
(BAYLEN &
INTENDENCIA)

-PRELIMINARY -
NOT FOR
CONSTRUCTION

PROJECT NO. : 20021
SHEET TITLE:
BUILDING SECTIONS

SHEET NUMBER:

A302

SCHEMATIC DESIGN

DO NOT SCALE DRAWINGS



PRINT DATE: 9/11/2020 12:47:12 PM

PROJECT ISSUES:	
CONCEPT PLANS	06.19.2020
SCHEMATIC DESIGN	07.14.2020
SCHEMATIC DESIGN 2	08.19.2020
SCHEMATIC DESIGN 3	08.28.2020
SCHEMATIC DESIGN 4	09.10.2020

PROJECT TEAM:	
CIVIL	KEN HORNE & ASSOCIATES
STRUCTURAL	JOE DEREUIL & ASSOCIATES
ARCHITECTURAL	CALDWELL ASSOC. ARCHITECTS
FIRE PROTECTION	W3 ENGINEERING
PLUMBING	W3 ENGINEERING
MECHANICAL	W3 ENGINEERING
ELECTRICAL	W3 ENGINEERING

PROJECT:
BAYLEN STREET
TOWNHOMES

150S BAYLEN STREET
PENSACOLA, FLORIDA
(BAYLEN &
INTENDENCIA)

-PRELIMINARY -
NOT FOR
CONSTRUCTION

PROJECT NO. : 20021
SHEET TITLE:
BUILDING SECTIONS

SHEET NUMBER:
A303
SCHEMATIC DESIGN