

TRANSMITTAL

DATE: 19 JANUARY 2021
TO: Architectural Review Board (ARB), City of Pensacola
PROJECT NAME: Pl2
PROJECT NO: 2002

WE TRANSMIT herewith:

COPIES	DATE	DESCRIPTION
1	01-19-2021	Responses To Comments

REMARKS: For your review & approval.

By: R. Scott Holland



PROJECT TITLE

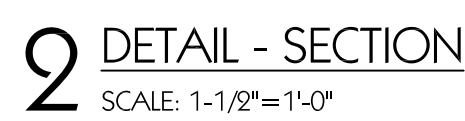
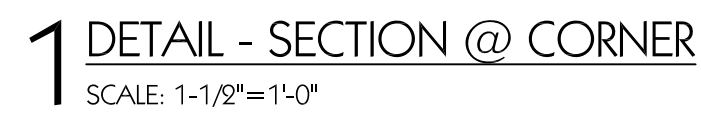
PI²

314 SOUTH ALCANIZ STREET
PENSACOLA, FL 32502

PROJECT NO.	5002	00% SUBMITTAL	
CAD DWG FILE	5002A7.1.dwg	DATE	01-19-2021
DRAWN BY	RSH	REVISION 1	00-00-00
CHECKED BY	RSH		
COPYRIGHT	SSHA 2000		

DETAILS /
EXTERIOR HANDRAILS
& PORCH COLUMNS

A7.1



SCALE: 1-1/2"=1'-0"

NOTE: ELEVATIONS REFLECT HANDRAIL AND PORCH COLUMN DESIGN ON WEST ELEVATION OF STRUCTURE (VIEW FROM SOUTH ALCANIZ STREET).





THIS DRAWING IS THE PROPERTY OF RSH ARCHITECT
IT IS NOT TO BE REPRODUCED OR COPIED IN
WHOLE OR IN PART. IT IS ONLY TO BE USED FOR THE
PROJECT AND SITE SPECIFICALLY IDENTIFIED HEREIN.
IT IS TO BE RETURNED UPON REQUEST.

PROJECT TITLE

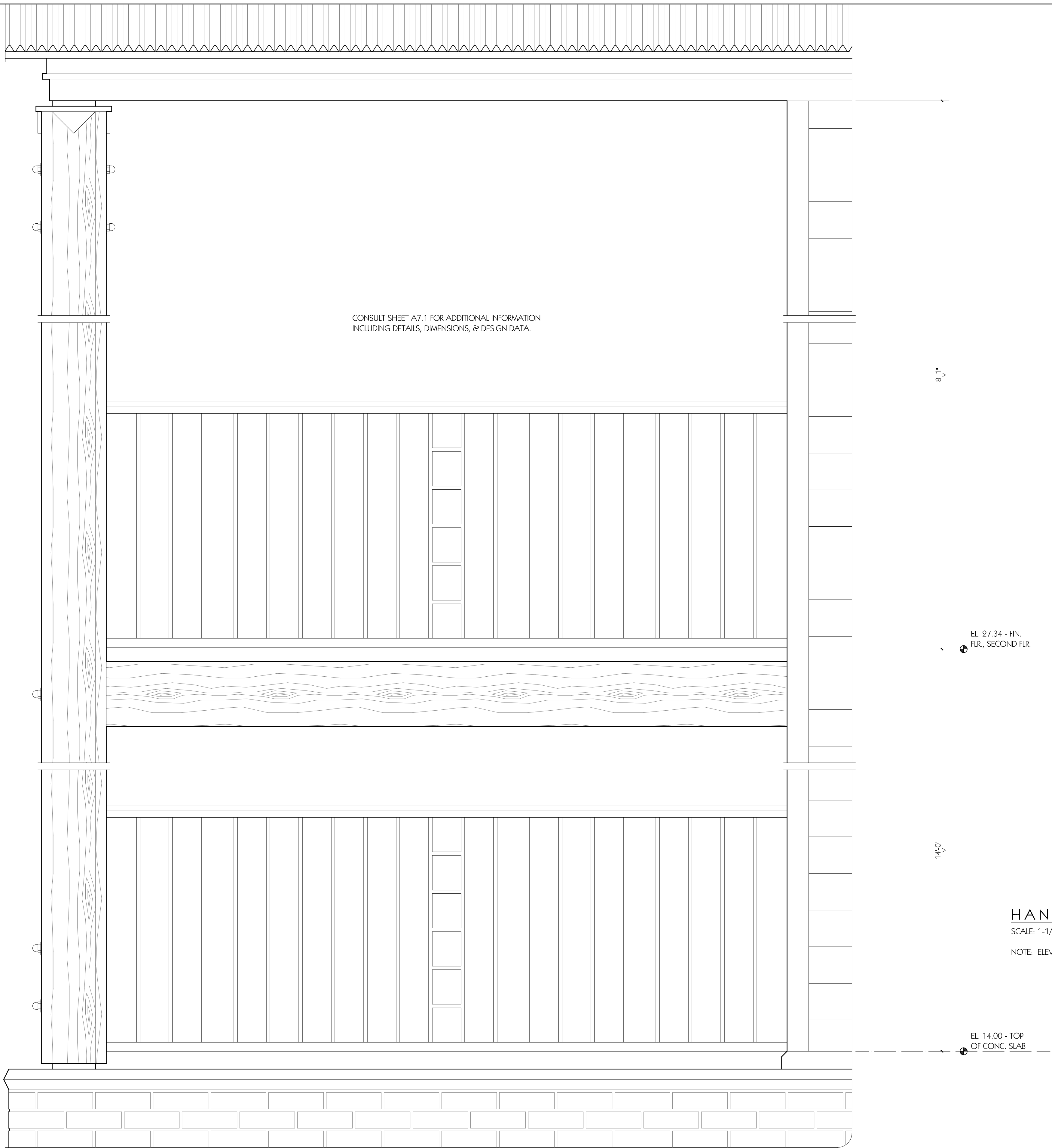
PI²

314 SOUTH ALCANIZ STREET
PENSACOLA, FL 32502

PROJECT NO.	30092	00% SUBMITAL	
CAD DWG FILE	30092A1.dwg	DATE	01-19-2021
DRAWN BY	RSB	REVISION 1	00-00-00
CHECKED BY	RSB		
COPYRIGHT	RS&A 2020		

DETAILS /
EXTERIOR HANDRAILS
& PORCH COLUMNS

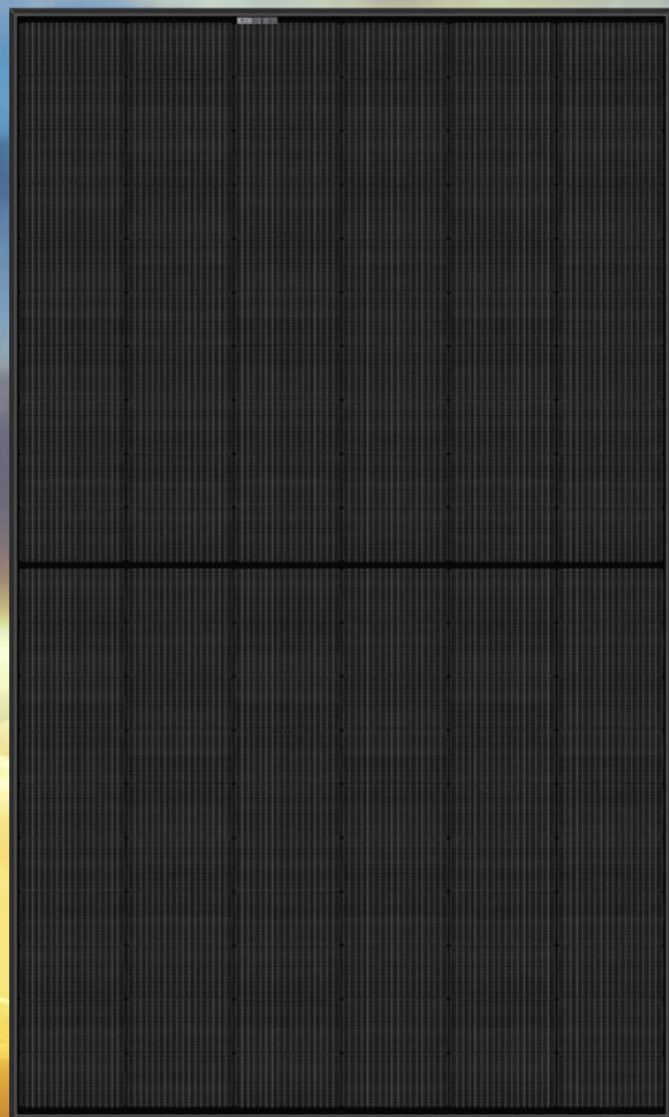
A7.2



SOLAR'S MOST TRUSTED



REC ALPHA BLACK SERIES



375
WP
POWER



ELIGIBLE FOR



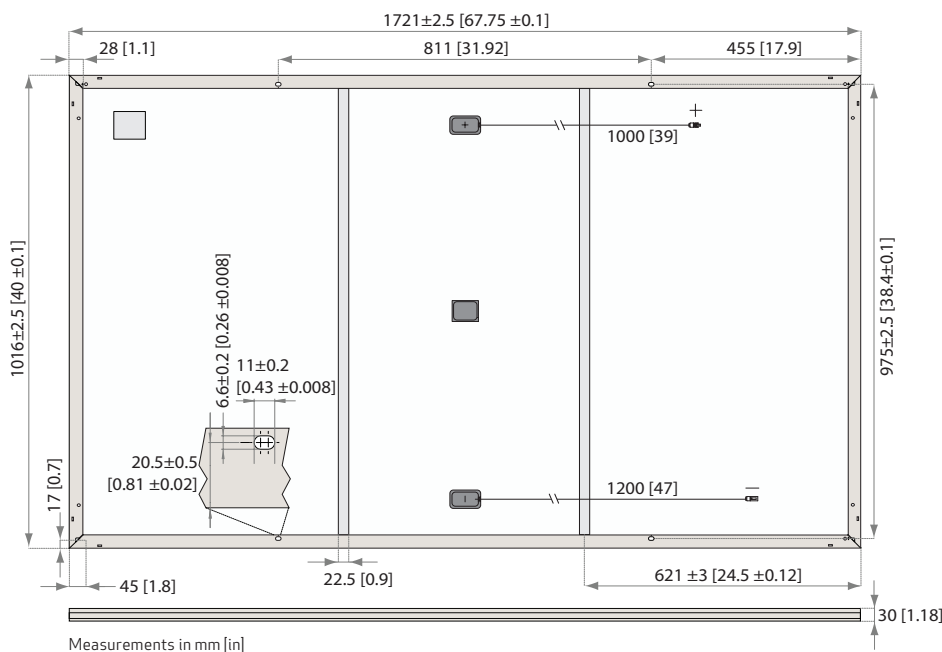
EXPERIENCE



PERFORMANCE

REC ALPHA BLACK SERIES

PRODUCT DATASHEET



GENERAL DATA

Cell type:	120 half-cut cells with REC heterojunction cell technology 6 strings of 20 cells in series	Connectors:	Stäubli MC4 PV-KBT4/KST4 (4mm ²) in accordance with IEC 62852 IP68 only when connected
Glass:	3.2 mm solar glass with anti-reflection surface treatment	Cable:	4 mm ² solar cable, 1.0 m + 1.2 m in accordance with EN 50618
Backsheet:	Highly resistant polymeric construction (black)	Dimensions:	1721 x 1016 x 30 mm (1.75 m ²)
Frame:	Anodized aluminum (black)	Weight:	19.5 kg
Junction box:	3-part, 3 bypass diodes, IP67 rated in accordance with IEC 62790	Origin:	Made in Singapore

ELECTRICAL DATA

Product Code*: RECxxxAA Black

	355	360	365	370	375
Power Output - P _{MAX} (Wp)	355	360	365	370	375
Watt Class Sorting - (W)	-0/+5	-0/+5	-0/+5	-0/+5	-0/+5
Nominal Power Voltage - V _{MPP} (V)	36.4	36.7	37.1	37.4	37.8
Nominal Power Current - I _{MPP} (A)	9.77	9.82	9.85	9.9	9.94
Open Circuit Voltage - V _{OC} (V)	43.6	43.9	44.0	44.1	44.2
Short Circuit Current - I _{SC} (A)	10.47	10.49	10.52	10.55	10.58
Power Density (W/m ²)	202.85	205.71	208.57	211.42	214.28
Panel Efficiency (%)	20.3	20.6	20.9	21.2	21.4
Power Output - P _{MAX} (Wp)	271	274	278	282	286
Nominal Power Voltage - V _{MPP} (V)	34.3	34.6	35.0	35.2	35.6
Nominal Power Current - I _{MPP} (A)	7.89	7.93	7.96	8.00	8.03
Open Circuit Voltage - V _{OC} (V)	41.1	41.4	41.5	41.6	41.6
Short Circuit Current - I _{SC} (A)	8.46	8.47	8.50	8.52	8.55

Values at standard test conditions (STC: air mass AM 1.5, irradiance 1000 W/m², temperature 25°C), based on a production spread with a tolerance of P_{MAX}, V_{OC} & I_{SC} ±3% within one watt class. Nominal module operating temperature (NMOT: air mass AM 1.5, irradiance 800 W/m², temperature 20°C, windspeed 1 m/s). *Where xxx indicates the nominal power class (P_{MAX}) at STC above.

CERTIFICATIONS

IEC 61215:2016, IEC 61730:2016, UL 1703, UL 61730	
IEC 62804	PID
IEC 61701	Salt Mist
IEC 62716	Ammonia Resistance
ISO 11925-2	Ignitability (Class E)
IEC 62782	Dynamic Mechanical Load
IEC 61215-2:2016	Hailstone (35mm)
AS4040.2 NCC 2016	Cyclic Wind Load
ISO 14001:2004, ISO 9001:2015, OHSAS 18001:2007, IEC 62941	



WARRANTY*

	Standard	REC ProTrust	
Installed by an REC Certified Solar Professional	No	Yes	Yes
System Size	All	≤25 kW	25-500 kW
Product Warranty (yrs)	20	25	25
Power Warranty (yrs)	25	25	25
Labor Warranty (yrs)	0	25	10
Power in Year 1	98%	98%	98%
Annual Degradation	0.25%	0.25%	0.25%
Power in Year 25	92%	92%	92%

See warranty documents for details. Conditions apply.

MAXIMUM RATINGS

Operational temperature:	-40 ... +85°C
Maximum system voltage:	1000 V
Design load (+): snow	4666 Pa (475 kg/m ²)*
Maximum test load (+):	7000 Pa (713 kg/m ²)*
Design load (-): wind	2666 Pa (272 kg/m ²)*
Maximum test load (-):	4000 Pa (407 kg/m ²)*
Max series fuse rating:	25 A
Max reverse current:	25 A

* Calculated using a safety factor of 1.5
* See installation manual for mounting instructions

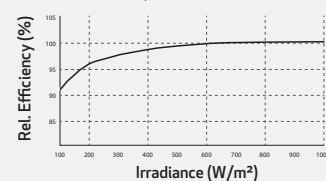
TEMPERATURE RATINGS*

Nominal Module Operating Temperature:	44°C (±2°C)
Temperature coefficient of P _{MAX} :	-0.26 %/°C
Temperature coefficient of V _{OC} :	-0.24 %/°C
Temperature coefficient of I _{SC} :	0.04 %/°C

*The temperature coefficients stated are linear values

LOW LIGHT BEHAVIOUR

Typical low irradiance performance of module at STC:



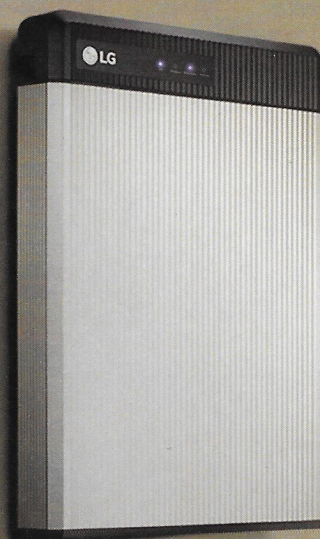
REC Group is an international pioneering solar energy company dedicated to empowering consumers with clean, affordable solar power in order to facilitate global energy transitions. Committed to quality and innovation, REC offers photovoltaic modules with leading high quality, backed by an exceptional low warranty claims rate of less than 100ppm. Founded in Norway in 1996, REC employs 2,000 people and has an annual solar panel capacity of 1.8 GW. With over 10 GW installed worldwide, REC is empowering more than 16 million people with clean solar energy. REC Group is a Bluestar Elkem company with headquarters in Norway, operational headquarters in Singapore, and regional bases in North America, Europe, and Asia-Pacific.



Innovation
for a Better Life



CHANGE YOUR ENERGY CHARGE YOUR LIFE



RESU



Compact Size & Easy Installation

The compact and lightweight nature of the RESU is world-class. It is designed to allow easy wall-mounted or floor-standing installation for both indoor and outdoor applications. The inverter connections have also been simplified, reducing installation time and costs.



Powerful Performance

The new RESU series features industry-leading continuous power (4.2kW for RESU6.5) and DC round-trip efficiency (95%). LG Chem's L&S (Lamination & Stacking) technology provides durability ensuring 80% of capacity retention after 10 years.



Proven Safety

LG Chem places the highest priority on safety and utilizes the same technology for its ESS products that has a proven safety record in its automotive battery. All products are fully certified in relevant global standards.

RESU

Change Your Energy, Charge Your Life

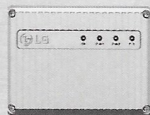
48V



Models	RESU3.3	RESU6.5	RESU10
Total Energy [kWh]	3.3	6.5	9.8
Usable Energy [kWh]	2.9	5.9	8.8
Capacity [Ah]	63	126	189
Nominal Voltage [V]	51.8	51.8	51.8
Voltage Range [V]	42.0-58.8	42.0-58.8	42.0-58.8
Max Power [kW]	3.0	4.2	5.0
Peak Power [kW] (for 3 sec.)	3.3	4.6	7.0
Dimension [W x H x D, in]	17.8 x 15.8 x 4.7	17.8 x 25.7 x 4.7	17.8 x 19.0 x 8.9
Weight [lb]	68	115	165
Enclosure Protection Rating	IP55		
Communication	CAN 2.0 B		
Certificates	Cell	UL1642	
	Product	UL1973 / TUV (IEC 62619) / CE / FCC / RCM	

Compatible Inverter Brands : SMA, SolaX, Sungrow, Schneider, Ingeteam, GoodWe, Redback, Victron Energy (As of 3Q. 2016, More brands to be added)

RESU PLUS



RESU Plus is an expansion kit specially designed for 48V models of new RESU series. With RESU Plus, all 48V models can be cross-connected with each other.

- Dimension: 6.1 x 8.5 x 4.8 (W x H x D, in)
- Number of Expandable Battery Units: Up to 2EA
- IP55

400V



Models	RESU7H	RESU10H
Total Energy [kWh]	7.0	9.8
Usable Energy [kWh]	6.6	9.3
Capacity [Ah]	63	63
Voltage Range [V]	350-450	350-450 385-550
Max Power [kW]	3.5	5.0
Peak Power [kW] (for 10 sec.)	5.0	7.0
Dimension [W x H x D, in]	29.3 x 27.2 x 8.1	29.3 x 35.7 x 8.1
Weight [lb]	168	214 220
Enclosure Protection Rating	IP55	
Communication	RS485	RS485 CAN 2.0 B
Certificates	Cell	UL 1642
	Product	TUV (IEC 62619) / CE / RCM UL1973 / TUV (IEC 62619) / CE / FCC / RCM

Compatible Inverter Brands : SMA(RESU10H) , SolarEdge(RESU7H,10H) (As of 3Q. 2016, More brands to be added)

