



City of
Pensacola
*America's First Settlement
And Most Historic City*

**Architectural Review Board Application
Full Board Review**

Application Date: _____

Project Address: _____

Applicant: _____

Applicant's Address: _____

Email: _____ **Phone:** _____

Property Owner: _____

(If different from Applicant)

District: **PHD** **NHPD** **OEHPD** **PHBD** **GCD**

Application is hereby made for the project as described herein:

- ☐ Residential Homestead – \$50.00 hearing fee
- ☐ Commercial/Other Residential – \$250.00 hearing fee

** An application shall be scheduled to be heard once all required materials have been submitted and it is deemed complete by the Secretary to the Board. You will need to include fourteen (14) copies of the required information. Please see pages 3 – 4 of this application for further instruction and information.*

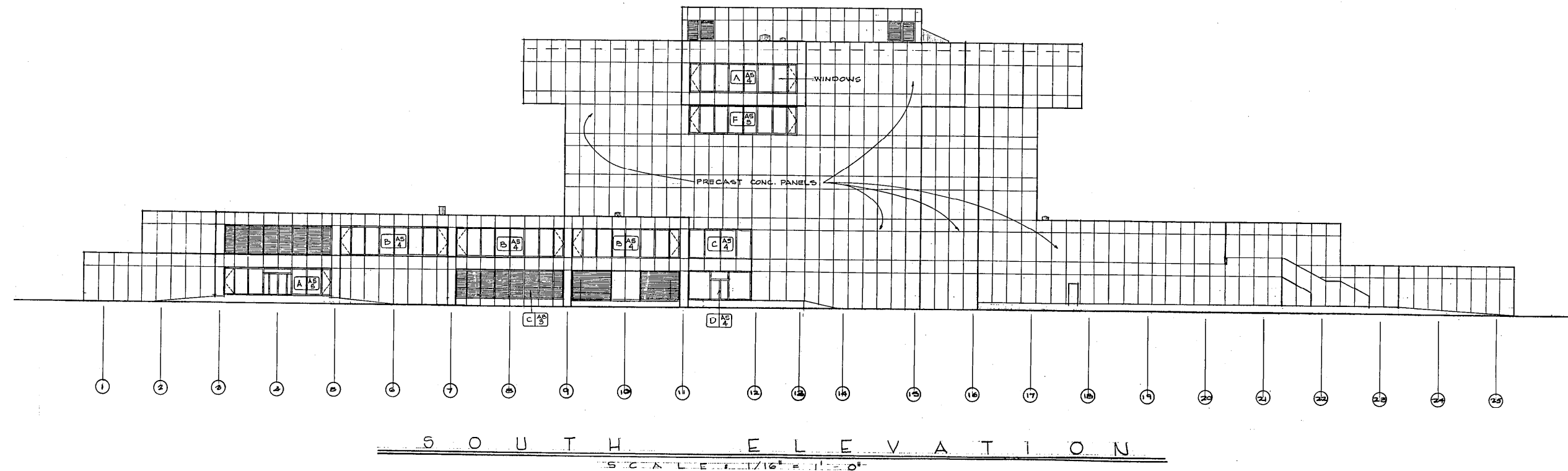
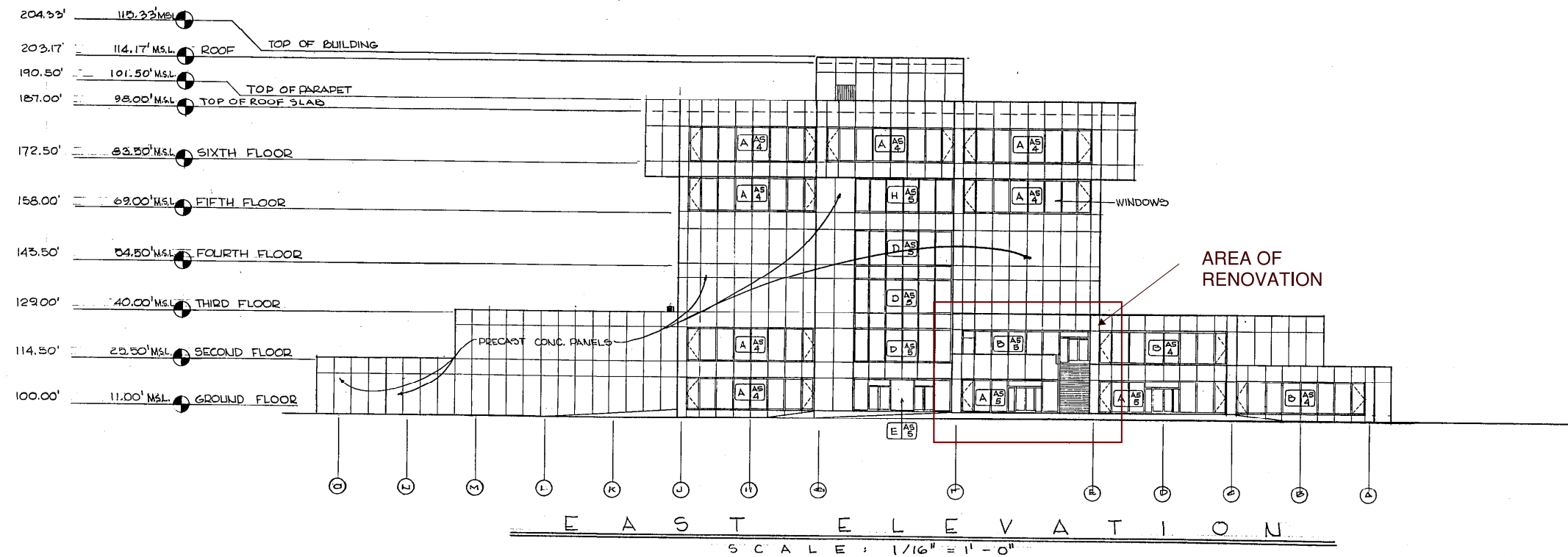
Project specifics/description:

I, the undersigned applicant, understand that payment of these fees does not entitle me to approval and that no refund of these fees will be made. I have reviewed the applicable zoning requirements and understand that I must be present on the date of the Architectural Review Board meeting.

Applicant Signature

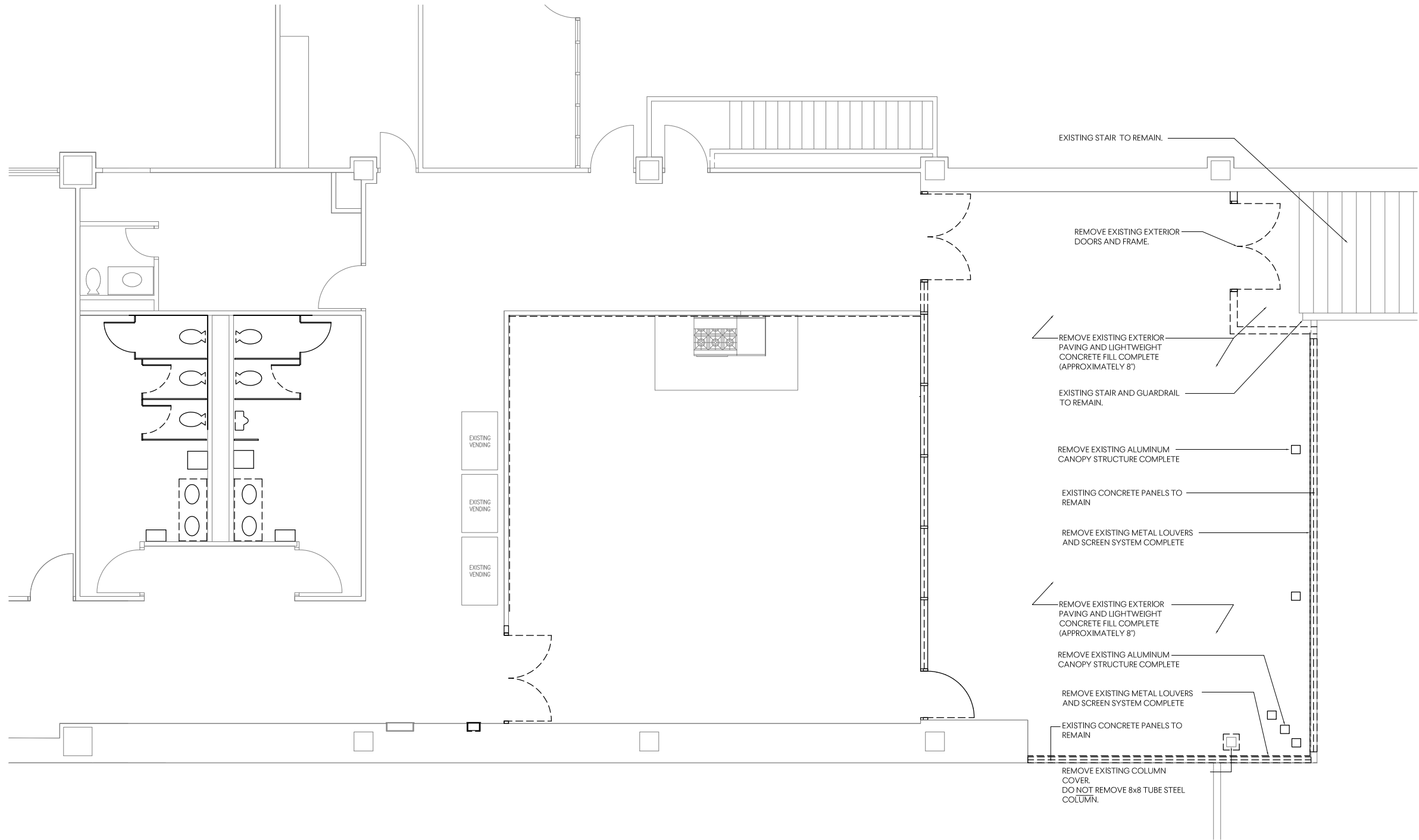
Date

Planning Services
222 W. Main Street * Pensacola, Florida 32502
(850) 435-1670
Mail to: P.O. Box 12910 * Pensacola, Florida 32521



EXISTING BUILDING ELEVATIONS

ESCAMBIA COUNTY JUDICIAL BUILDING BOARD OF COUNTY COMMISSIONERS PENSACOLA, FLORIDA		EXTERIOR ELEVATIONS EAST AND SOUTH	
GOVERNMENTAL CENTER ARCHITECTS - ENGINEERS		THE BULLOCK ASSOCIATES • HUGH J. LEITCH • LOOK & MORRISON • MARSHALL & McNEIL HENNINGSON, DURHAM & RICHARDSON	
DESIGNED	DRAWN	CHECKED	APPROVAL
PARKS	GREGORY		
JOB NO. 10411		SHEET NO. A3-1	
DATE 9-8-75			



EXISTING STAIR TO REMAIN.

REMOVE EXISTING EXTERIOR
DOORS AND FRAME.

REMOVE EXISTING EXTERIOR
PAVING AND LIGHTWEIGHT
CONCRETE FILL COMPLETE
(APPROXIMATELY 8')

EXISTING STAIR AND GUARDRAIL
TO REMAIN.

REMOVE EXISTING ALUMINUM
CANOPY STRUCTURE COMPLETE

EXISTING CONCRETE PANELS TO
REMAIN

REMOVE EXISTING METAL LOUVERS
AND SCREEN SYSTEM COMPLETE

REMOVE EXISTING EXTERIOR
PAVING AND LIGHTWEIGHT
CONCRETE FILL COMPLETE
(APPROXIMATELY 8')

REMOVE EXISTING ALUMINUM
CANOPY STRUCTURE COMPLETE

REMOVE EXISTING METAL LOUVERS
AND SCREEN SYSTEM COMPLETE

EXISTING CONCRETE PANELS TO
REMAIN

REMOVE EXISTING COLUMN
COVER.
DO NOT REMOVE 8x8 TUBE STEEL
COLUMN.

EXISTING
VENDING

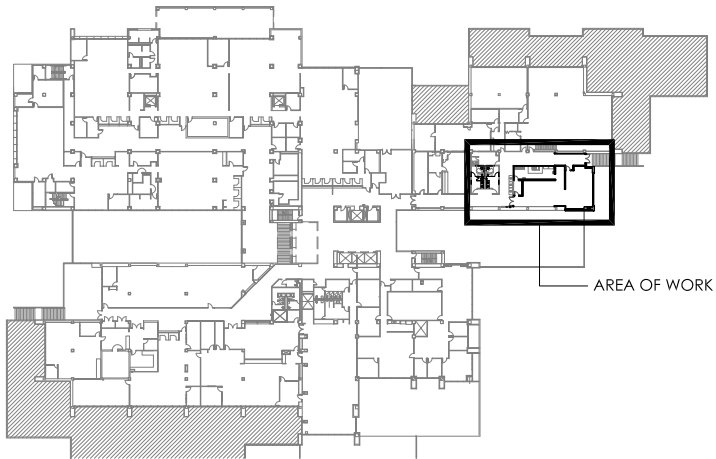
EXISTING
VENDING

EXISTING
VENDING

1
D101

DEMOLITION FLOOR PLAN

SCALE: 1/8" = 1'-0"



A
A101

BUILDING KEY PLAN - SECOND FLOOR

N.T.S.

Demolition Floor Plan

MC Blanchard Building
Food Service and
Restroom Renovation

190 West Government St.
Pensacola, FL 32502

GMC Project #: APN190093

D101

ISSUE	DATE
ARB SUBMITTAL	01-28-2021

720 Bayfront Parkway, Suite 200
Pensacola, FL 32502
T 850.432.0706
GMCNETWORK.COM
Gerald Steven Jernigan -
Qualifying Agent
FL Architect AR 0009953





7720 Bayfront Parkway, Suite 200
Pensacola, FL 32502
T 850.432.0706
GMCNETWORK.COM
Gerald Steven Jernigan -
Qualifying Agent
FL Architect AR 0009953

ISSUE	DATE
ARB SUBMITTAL	01-28-2021
DRAWN BY:	.
CHECKED BY:	

MC Blanchard Building
Food Service and
Restroom Renovation

190 West Government St.
Pensacola, FL 32502

GMC Project #: APN190093

New Work Floor Plan

A101

[illegible]



720 Bayfront Parkway, Suite 200
Pensacola, FL 32502
T 850.432.0706
GMCNETWORK.COM
Gerald Steven Jernigan -
Qualifying Agent
FL Architect AR 0009953

ISSUE	DATE
ARB SUBMITTAL	01-28-2021
DRAWN BY:	
CHECKED BY:	

MC Blanchard Building
Food Service and
Restroom Renovation

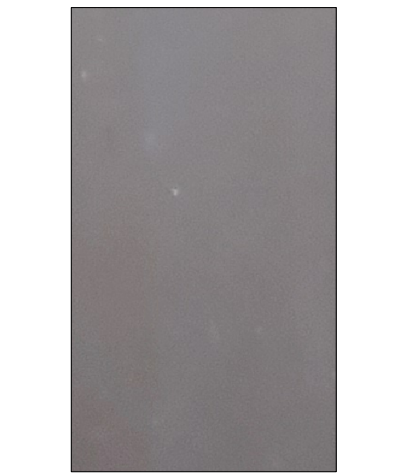
190 West Government St.
Pensacola, FL 32502

GMC Project #: APN190093

Existing Exterior Elevations

A200

DRAWN BY:	.
CHECKED BY:	.



2 EXTERIOR SOUTH ELEVATION
A201 SCALE: 1/8" = 1'-0"

EXISTING WINDOW FRAME.
NEW STOREFRONT WINDOW FRAMES TO
MATCH.

720 Bayfront Parkway, Suite 200
Pensacola, FL 32502
T 850.432.0706
G M C N E T W O R K . C O M
Gerald Steven Jernigan -
Qualifying Agent
FL Architect AR 0009953

ISSUE	DATE
ARB SUBMITTAL	01-28-2021
DRAWN BY:	-
CHECKED BY:	-

MC Blanchard Building
Food Service and
Restroom Renovation

190 West Government St.
Pensacola, FL 32502
GMC Project #: APN190093

Exterior Elevations

A201

THE
**Stock Color
Library**



ALUCOBOND® PLUS

3A Composites is grateful to the architectural community for embracing ALUCOBOND since its global introduction over 50 years ago. We aspire to bring value to our partners through outstanding service, industry-leading quality, and continuous innovation. As we look to the future, we remain committed to servicing the architectural community by listening to our customers and responding to the evolving needs of the market.

Our trend-forward palette represents an ongoing development of colors and finishes curated to foster creativity and ingenuity. We humbly look forward to another 50 years of shared partnership and collaboration.

Scan QR code
with mobile camera
to order samples
or visit us at:



ALUCOBONDUSA.COM/SAMPLES

The Classic Collection

Color plays an integral role in the architectural environment; the timeless palette in our Classic Collection reflects your passion for what's possible. From classic neutrals to biophilic hues, this line offers a wide range of options to help you give shape to great ideas.

The Spectra Collection

To add a dynamic element of fascination and movement to any architectural facade, these transitional finishes celebrate the natural color shifts that occur in the world around us – from raw natural elements to the glowing luster and sheen found in modern alloys and luxury finishes.

The Anodized Collection

In addition to the strength and high-quality appearance that comes standard with our collections, this line uses the anodizing process to enhance the intrinsic clarity and beauty of aluminum while creating a harder, smoother, more durable surface.

The Natural Collection

Biophilic design conceptualizes spaces in a way that acknowledges the human need to connect with nature. The finishes in the Natural Collection amplify the organic beauty and character of different elements & materials found in the world around us.

The Element Series finishes unify the effortless appearance of organic metals & finely textured patterns to create a vivid & memorable impression while retaining the luster of aluminum from afar.

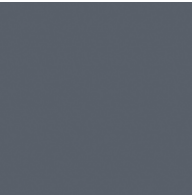
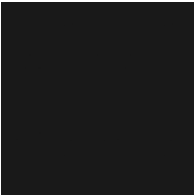













The Terra Series is inspired by iridescent stone & the mesmerizing beauty of crystalline surfaces, creating a unique, organic and natural ambiance.

The Woodgrain Series exemplifies the inherent beauty & character of natural wood unifying its effortless appearance with the outstanding durability & lightweight properties of aluminum composite.


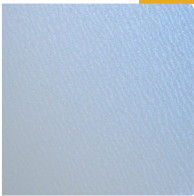
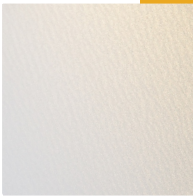


The Classic Collection

					
Statuary Bronze PVDF 2 Gloss 25–35	New-Age Dark Bronze Mica PVDF 2 / Gloss 20–30	Driftwood Mica PVDF 2 Gloss 15–25	Atacama Bronze Metallic PVDF 3 Gloss 25–35	Hazelnut Mica PVDF 2 Gloss 15–25	Russet Mica PVDF 3 Gloss 25–35
					
Beige PVDF 2 Gloss 35–45	Castle Gray PVDF 2 Gloss 25–35	JLR Champagne Metallic PVDF 2 Gloss 20–30	Anodic Satin Mica PVDF 2 Gloss 20–30	Epernay Champagne Metallic PVDF 3 Gloss 25–35	Harvest Gold Mica PVDF 2 Gloss 20–30
					
Oyster PVDF 2 Gloss 20–30	Polyester White Polyester Gloss 25–35	Alabaster PVDF 2 Gloss 25–35	Bone White PVDF 2 Gloss 25–35	Pure White (RVW) PVDF 2 Gloss 45–55	HWH Bio White PVDF 2 Gloss 40–50
					
Magnolia PVDF 2 Gloss 30–40	Market Pearl White Mica PVDF 2 Gloss 15–25	Sunrise Silver Metallic II PVDF 3 Gloss 25–35	Brilliant Silver Metallic PVDF 3 Gloss 25–35	Anodic Clear Mica PVDF 2 Gloss 20–30	Champagne Metallic PVDF 3 Gloss 25–35
					
Platinum Mica PVDF 2 Gloss 15–25	Silver Metallic PVDF 3 Gloss 25–35	Cadet Gray PVDF 2 Gloss 20–30	West Pewter Mica II PVDF 2 Gloss 15–25	Beachstone Gray Metallic PVDF 3 Gloss 25–35	JLR Gray Metallic PVDF 2 Gloss 25–35
					
Steel City Silver Mica PVDF 2 Gloss 15–25	MZG Gray Mica II (Lexus) PVDF 2 Gloss 30–40	Greyhound PVDF 2 Gloss 5–15	Anthracite Silver Metallic PVDF/FEVE Gloss 70–80	Graphite Mica PVDF 3 Gloss 25–35	Dusty Charcoal II PVDF 2 Gloss 25–35

The Classic Collection (continued)

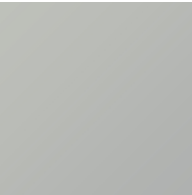




				
Nissan Gray PVDF 3 Gloss 45-55	Tri-Corn Black SMP Gloss 25-35	Focus Black II PVDF 2 Gloss 25-35	TBL Black (Buick) SMP Gloss 70-80	Black Metallic PVDF 3 Gloss 25-35
				
Spire Blue II PVDF 3 Gloss 25-35	Azure Blue PVDF 3 Gloss 25-35	Ultramarine Blue PVDF 2 Gloss 25-35	Bowtie Blue II SMP Gloss 65-75	Image Blue SMP Gloss 25-35
				
Red Fire PVDF 3 Gloss 25-35	Patriot Red PVDF 3 Gloss 45-55	Carb Red SMP Gloss 75-85	Tuscan Sun PVDF 2 Gloss 25-35	Botanical PVDF 2 Gloss 25-35

The Spectra Collection

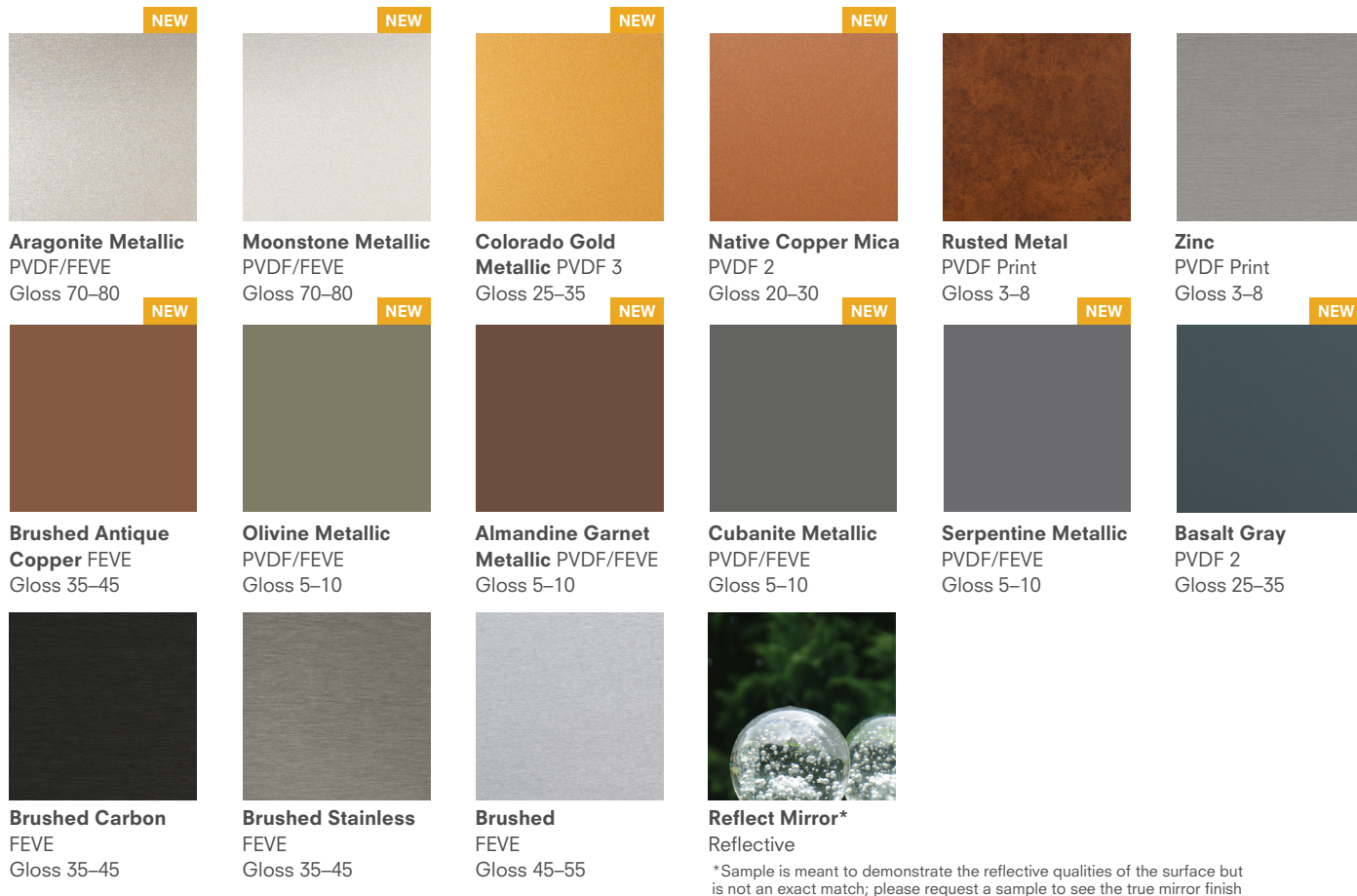
				
Ocean PVDF/FEVE Gloss 70-80	Galaxy Blue PVDF/FEVE Gloss 70-80	White Gold PVDF/FEVE Gloss 70-80	Cupral PVDF/FEVE Gloss 70-80	Sakura PVDF/FEVE Gloss 70-80

The Anodized Collection

Lead time of 3-4 weeks

				
Clear Anodized Anodized Gloss 15-25	Light Bronze Anodized Anodized Gloss 15-25	Medium Bronze Anodized Anodized Gloss 15-25	Dark Bronze Anodized Anodized Gloss 15-25	Black Anodized Anodized Gloss 15-25

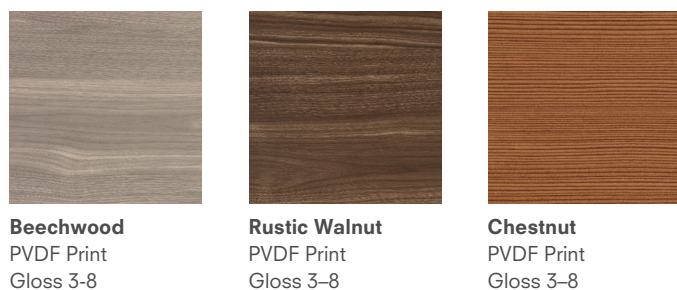
The Natural Collection **Element Series**



The Natural Collection **Terra Series**



The Natural Collection **Woodgrain Series**



Scan QR code with mobile camera to order samples or visit
ALUCOBONDUSA.COM/SAMPLES

PRODUCT DESCRIPTION

MATERIAL COMPOSITION

- Aluminum interior and exterior facings in 0.020" nominal thickness
- 4mm total nominal thickness, including proprietary fire retardant core

SHEET WIDTHS

- Standard coil-coated width of 62"*
- *Some finishes are stocked in 40", 49.2" and 50"
- Please refer to stock material list.
- Custom widths of 40" and 50" available on request

SHEET LENGTHS

- Standard coil-coated length of 196"
- Reflect Mirror is offered in 146"
- Custom lengths for coil coating: maximum of 400"
- Custom lengths for anodized: maximum of 216"

MINIMUM BENDING RADIUS

- The minimum bending radius of ALUCOBOND PLUS without routing the interior skin is 4"

AVAILABLE FINISHES

- | | | | |
|--------|-------------|------------------|------------------|
| - PVDF | - Polyester | - Textured | - Solids, Micas, |
| - FEVE | - Anodized | - Print | & Metallics |
| - SMP | - Brushed | - Color-Shifting | |

TECHNICAL SUMMARY

TECHNICAL PROPERTIES

ALUCOBOND PLUS

- | | |
|--|-------------------------------|
| - Nominal thickness: | 4mm |
| - Nominal weight: | 1.56 lb/ft ² |
| - Coefficient of Expansion x 10 ⁻⁵ (in/in/°F) | 1.11 |
| - Temperature Resistance: | -55° to 175° F (-48° to 80°C) |
| - Rigidity: | 2143 lb-in ² /in |

NORTH AMERICAN BUILDING CODE ACCEPTANCE

- IBC
- Miami-Dade County, Florida
- National Building Code of Canada
- State of Florida
- City of Los Angeles, California

MANUFACTURING

- ALUCOBOND PLUS is made in Benton, Kentucky USA

PAINT FINISHES

All ALUCOBOND PLUS PVDF & FEVE finishes are coated in accordance with AAMA 2605 signifying the highest-performance exterior finish standard in the industry. AAMA 2605 finishes have the best chalk, humidity, and color change performance. SMP finishes meet AAMA 2604.

- **PVDF (Polyvinylidene Fluoride)** Two coat PVDF paint systems are applied to solid & mica finishes which are coil-coated over a pre-treated aluminum substrate with a primer & color coat at a nominal 1.0 mil thickness. When a two coat PVDF system is used, the primer allows bonding & color consistency in the color coat to show, in lieu of having the underlying metal affect color consistency. Note, the pre-treatment is not considered one of the paint "coats." Three coat systems are solid & metallic finishes which are coil-coated over a pre-treated aluminum substrate with a primer, color coat, & clear coat at a nominal 1.5 mil thickness. The clear coat protects the aluminum flake from oxidizing & adds increased weatherability & protection against the elements.

- **FEVE (Fluoropolymer Based)** Base coat plus a clear coat are often used to protect bare finishes, ie. various brushed patterns. A transparent top coat is applied to the coil protecting the surface from the elements & preserves the aesthetic of the bare finish. Various tints can be applied to broaden the color palette & add to the aesthetics of a project.

- **PVDF/FEVE Finish** consists of 2 coats of PVDF & a clear coat of FEVE. On our Spectra finishes, the FEVE coat provides a higher gloss level & depending on the viewing angle, different wave-lengths of light are reflected, resulting in an ever-changing color gradient with iridescent highlights.

- **SMP (Silicone Modified Polyester)** Paint systems are a blend of polyester & silicon intermediates. Silicone acts to improve the gloss retention & weather resistance of the polyester coating.

For warranty information please contact your local ALUCOBOND Sales Manager.

CUSTOM COLORS

If you require a custom color for your next project, our color technicians will strive to match your desired color. Please note, custom color orders are subject to set-up charges and require a 1,000 sq. ft. minimum per color. Exact matches are not always possible due to different inks & pigments used in various industries & application methods. Matching a color created by a spray method, particularly a metallic, may not match with a color created on a roll coated method.

To ensure that we identify your color correctly, we require either:

- A hand sample of at least 1" x 1", OR
- Pantone®, RAL, NCS or paint code reference

Please reach out to your local sales manager to aid with the process at:
ALUCOBONDUSA.COM/SALES-REP

Send the color sample along with your name, company name, address, phone number & email, as well as the project name, project location, type of finish and gloss level to:

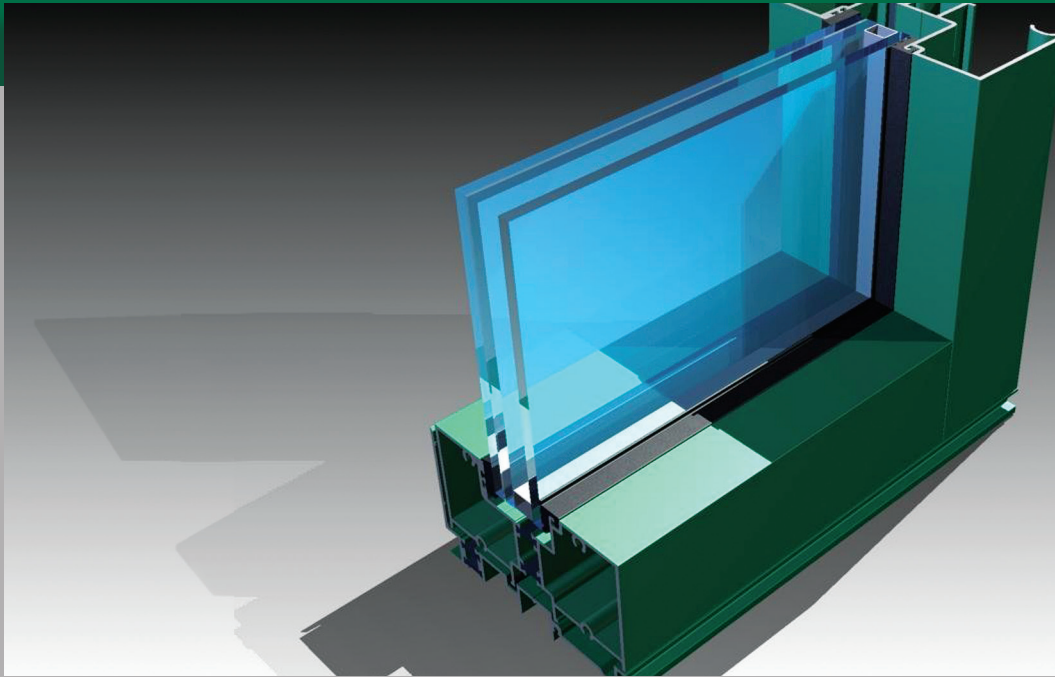
3A Composites USA
Attn: Color Lab
208 West Fifth Street
Benton, KY 42025



ALUCOBOND® is a registered trademark of 3A Composites USA Inc.
© 2020 3A Composites USA. All Rights Reserved.
01-2020-20000

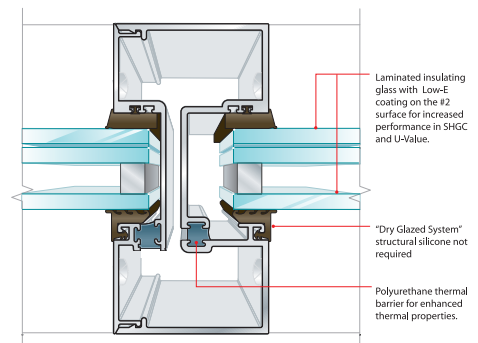
ALUCOBONDUSA.COM / 800.626.3365








SERIES 526 STOREFRONT FRAMING



Outside Glazed • Inside Glazed

Series 526 is a 2-1/2" X 5" impact rated storefront product that incorporates the use of a polyurethane thermal barrier for improved CRF and U values. It can also be used with all standard and heavy duty EFCO impact rated entrance packages. The series 526 has applications for both small and large missile impact resistant "dry gasket" glazing and has been tested for High Velocity Hurricane Zone (HVHZ) with 1 5/16" insulating glass utilizing inboard 9/16" laminated glass with .090" Dupont™ Sentry Glass® Plus interlayer. Florida Product Approvals 13599.8.



STRUCTURAL LOAD <small>(ASTM E330)</small> VISIT EFCOCORP.COM		WATER RESISTANCE <small>(ASTM E547 & E331)</small> 12 PSF	
AIR INFILTRATION <small>(ASTM E283)</small> <0.06 CFM/FT²		CRF <small>(AAMA 1503)</small> 56	
U-FACTOR* <small>(ANSI/NFRC 100/200)</small> 0.36-0.57		OITC* <small>(ASTM E90 & E413)</small> 32	
STC* <small>(ASTM E90 & E413)</small> 38-39			

STANDARD FEATURES

- Screw spline construction
- Thermally broken with E-Strut at sill and subsill
- Thermally broken with pour and debridge polyurethane
- Integral door adaptors
- Joint fasteners are #12
- Horizontals are square cut
- Dry Glazed
- Interlocking legs at aubsill
- Head and jamb anchors are inside the glazing pocket
- Accessory line of perimeter anchors, pocket fillers, door adaptors, etc.
- Anodized or painted finishes available

* Performance dependent on glass selection. Please contact your EFCO sales rep for project specific performance.

PRODUCT DATA SHEET

Sarnafil® S 327-60 EnergySmart

Sarnafil S 327 Roof Membrane is a PVC thermoplastic membrane

PRODUCT DESCRIPTION

Sarnafil® S 327-60 EnergySmart Roof Membrane is a PVC thermoplastic membrane produced with an integral polyester reinforcement for high strength, is highly reflective, with heat-weldable seams, and a unique lacquer coating applied to the top of the membrane to reduce dirt pick up.

USES

Sarnafil S 327 is used in mechanically attached applications with various fastening methods, over various substrates.

AREAS OF APPLICATION

- New Roofs
- Reroofs
- Recovers

CHARACTERISTICS / ADVANTAGES



- Highly reflective
- Excellent tear strength resistance
- Factory applied lacquer coated to reduce dirt pick up
- Hot-air welded seams for long-term performance
- Proven membrane performance
- Superior fire resistance

APPROVALS / STANDARDS

- FM Global
- Underwriters Laboratories
- Underwriters Laboratories of Canada
- ICC Code Compliance – ESR 1157
- Miami-Dade County
- Florida Building Code
- NSF/ANSI 347: Platinum Certified
- ENERGY STAR®
- California Title 24
- LEED / Green Globes

PRODUCT INFORMATION

Chemical Base	High-quality, PVC membrane containing ultraviolet light stabilizers, flame retardant and polyester scrim reinforcement with a unique lacquer coating on the top surface.	
Recycled Content	9% Pre-consumer, 1% Post-consumer	
Reinforcing Material	Polyester	
Packaging	60 mil (1.5 mm) Membrane 10 ft x 100 ft (3 m x 30 m) roll, 389 lbs (177 kg) per roll 8 rolls per pallet 5 ft x 100 ft (1.5 m x 30 m) roll, 195 lbs (89 kg) per roll 12 rolls per pallet Coverstrip: 8" x 100 ft (20 cm x 30 m) roll, 25 lbs (12 kg) per roll 25 per pallet	
Appearance / Color	<ul style="list-style-type: none"> Top: White, Tan, and Reflective Gray Bottom: Gray 	
Shelf Life	N/A	
Storage Conditions	Store rolls on pallets and fully protected from the weather with clean canvas tarpaulins. Unvented polyethylene tarpaulins are not accepted due to the accumulation of moisture beneath the tarpaulin in certain weather conditions that may affect the ease of membrane weldability.	
Overall Thickness	60 mil (1.5 mm), minimum thickness 45 mil	(ASTM D-751) (ASTM Type III D-4434 Spec. Requirement)
Thickness Above Scrim	27 mil 16 mil	(ASTM D-7635) (ASTM Type III D-4434 Spec. Requirement)

TECHNICAL INFORMATION

Resistance to Static Puncture	Pass 33 lbf (15 kg)	(ASTM D-5602) (ASTM Type III D-4434 Spec. Requirement)
Resistance to Dynamic Puncture	Pass 14.7 ft-lbf (20 J)	(ASTM D-5635) (ASTM Type III D-4434 Spec. Requirement)
Tensile Strength	305 lbf (1356 N) 200 lbf (890 N)	(ASTM D-751) (ASTM Type III D-4434 Spec. Requirement)
Elongation at Break	28.5 & 29.5% MD & CMD ¹ 15 & 15% MD & CMD ¹	(ASTM D-751) (ASTM Type III D-4434 Spec. Requirement)
¹ MD = Machine Direction, CMD = Cross Machine Direction.		
Linear Dimensional Change	-0.12% 0.5%	(ASTM D-1204) (ASTM Type III D-4434 Spec. Requirement)
Tear Strength	48 lbf (213 N) 45 lbf (200 N)	(ASTM D-1004) (ASTM Type III D-4434 Spec. Requirement)
Seam Strength	Pass 75% of original ²	(ASTM D-751) (ASTM Type III D-4434 Spec. Requirement)
² Failure occurs through membrane rupture not seam failure.		
Low Temperature Bend	Pass Pass -40°F (-40°C)	(ASTM D-2136) (ASTM Type III D-4434 Spec. Requirement)

Retention of Properties after Heat Ageing	Tensile Strength, % of original: Pass		(ASTM D-3045)
	Elongation, % of original: Pass		(ASTM D-751)
	Tensile Strength, % of original: 90		(ASTM Type III D-4434 Spec. Requirement)
	Elongation, % of original: 90		
UV Exposure	10,000 hours		(ASTM G-154)
	5,000 hours		(ASTM Type III D-4434 Spec. Requirement)
	Cracking (7x magnification)	None	
	Discoloration (by observation)	Negligible	
	Crazing (7x magnification)	None	
Weight Change after Immersion in Water	2.0%		(ASTM D-570)
	± 3.0%		(ASTM Type III D-4434 Spec. Requirement)
Solar Reflectance	EnergySmart Colors	Initial Solar Reflectance ¹	3-Year Solar Reflectance ¹
	EnergySmart White ²	0.84	0.76
	EnergySmart Tan ²	0.73	0.65
	EnergySmart Reflective Gray ²	0.73	0.66
	¹ Solar Reflectance testing according to ASTM C1549.		
	² Meets ENERGY STAR®, LEED, Green Globes, and California’s Title 24 criteria for Low and Steep Slope applications.		
Thermal Emittance	EnergySmart Colors	Initial Thermal Emittance ¹	3-Year Thermal Emittance ¹
	EnergySmart White ²	0.86	0.85
	EnergySmart Tan ²	0.85	0.86
	EnergySmart Reflective Gray ²	0.89	0.88
	¹ Thermal Emittance testing according to ASTM C1371, Slide Method.		
	² Meets ENERGY STAR®, LEED, Green Globes, and California’s Title 24 criteria for Low and Steep Slope applications.		
Solar Reflectance Index	EnergySmart Colors	Initial Solar Reflectance Index ¹	3-Year Solar Reflectance Index ¹
	EnergySmart White ²	105	93
	EnergySmart Tan ²	89	78
	EnergySmart Reflective Gray ²	90	80
	¹ Solar Reflectance Index calculated according to ASTM E1980.		
	² Meets ENERGY STAR®, LEED, Green Globes, and California’s Title 24 criteria for Low and Steep Slope applications.		

APPLICATION INSTRUCTIONS

APPLICATION

Sarnafil S 327 is rolled out after proper preparation of

the approved substrate and fastened to the roof deck with appropriate mechanically attached system with Sarnafasteners in accordance with Sika's technical requirements. Sarnafil S 327 seams are heat-welded together by trained operators using hot-air welding

equipment. Different mechanically attached systems require different application methods. Please consult Sika's Specifications or Applicator Handbook for detailed installation procedures.

MAINTENANCE

Standard maintenance of Sarnafil systems should include regular inspections of flashings, drains, and termination sealants at least twice a year and after each storm.

AVAILABILITY/WARRANTY

AVAILABILITY

From Sika Corporation – Roofing Authorized Applicators for use within Sarnafil or Sikaplan systems.

WARRANTY

Upon successful completion of the installed roof by the Sika Authorized Applicator, Sika Corporation will provide a warranty to the Building Owner via the Sika Authorized Applicator.

BASIS OF PRODUCT DATA

Results may differ based upon statistical variations depending upon mixing methods and equipment, temperature, application methods, test methods, actual site conditions and curing conditions.

OTHER RESTRICTIONS

See Legal Disclaimer.

ENVIRONMENTAL, HEALTH AND SAFETY

For further information and advice regarding transportation, handling, storage and disposal of chemical products, user should refer to the actual Safety Data Sheets containing physical, environmental, toxicological and other safety related data. User must read the current actual Safety Data Sheets before using any products. In case of an emergency, call CHEMTREC at 1-800-424-9300, International 703-527-3887.

LEGAL DISCLAIMER

- KEEP CONTAINER TIGHTLY CLOSED
- KEEP OUT OF REACH OF CHILDREN
- NOT FOR INTERNAL CONSUMPTION
- FOR INDUSTRIAL USE ONLY
- FOR PROFESSIONAL USE ONLY

Prior to each use of any product of Sika Corporation, its subsidiaries or affiliates ("SIKA"), the user must always read and follow the warnings and instructions on the product's most current product label, Product Data Sheet and Safety Data Sheet which are available at usa.sika.com or by calling SIKA's Technical Service Department at 1-800-933-7452. Nothing contained in any SIKA literature or materials relieves the user of the obligation to read and follow the warnings and instructions for each SIKA product as set forth in the current product label, Product Data Sheet and Safety Data Sheet prior to use of the SIKA product.

SIKA warrants this product for one year from date of installation to be free from manufacturing defects and to meet the technical properties on the current Product Data Sheet if used as directed within the product's shelf life. User determines suitability of product for intended use and assumes all risks. User's and/or buyer's sole remedy shall be limited to the purchase price or replacement of this product exclusive of any labor costs. **NO OTHER WARRANTIES EXPRESS OR IMPLIED SHALL APPLY INCLUDING ANY WARRANTY OF MERCHANTABILITY OR FITNESS FOR A PARTICULAR PURPOSE. SIKA SHALL NOT BE LIABLE UNDER ANY LEGAL THEORY FOR SPECIAL OR CONSEQUENTIAL DAMAGES. SIKA SHALL NOT BE RESPONSIBLE FOR THE USE OF THIS PRODUCT IN A MANNER TO INFRINGE ON ANY PATENT OR ANY OTHER INTELLECTUAL PROPERTY RIGHTS HELD BY OTHERS.**

Sale of SIKA products are subject to the Terms and Conditions of Sale which are available at <https://usa.sika.com/en/group/SikaCorp/termsandconditions.html> or by calling 1-800-933-7452.

Sika Corporation
201 Polito Avenue
Lyndhurst, NJ 07071
Phone: +1-800-933-7452
Fax: +1-201-933-6225
usa.sika.com

Sika Sarnafil
100 Dan Road
Canton, MA 02021
Phone: +1 800-451-2504
Fax: +1 781-828-5365
usa.sika.com/sarnafil
webmaster.sarnafil@us.sika.com

Sika Mexicana S.A. de C.V.
Carretera Libre Celaya Km. 8.5
Fracc. Industrial Balvanera
Corregidora, Queretaro
C.P. 76920
Phone: 52 442 2385800
Fax: 52 442 2250537



Product Data Sheet
Sarnafil® S 327-60 EnergySmart
August 2020, Version 05.01
020905012060153002

SarnafilS327-60EnergySmart-en-US-(08-2020)-5-1.pdf

