



City of  
**Pensacola**  
*America's First Settlement  
And Most Historic City*

**Architectural Review Board Application  
Full Board Review**

Application Date: 12/31/20

**Project Address:** 1880 N. SPRING STREET, PENSACOLA FL. 32501  
**Applicant:** PHILIP PARTINGTON, A.I.A.  
**Applicant's Address:** 205 E. INTENDENCIA ST, PENSACOLA FL 32502  
**Email:** PHILIP@SMP-ARCH.COM **Phone:** 712-5765  
**Property Owner:** RICHARD AND ELIZABETH SHERRILL

**District:** ☐ PHD ☒ NHPD ☐ OEHPD ☐ PHBD ☐ GCD  
(If different from Applicant)

Application is hereby made for the project as described herein:

- ☒ Residential Homestead – \$50.00 hearing fee  
☐ Commercial/Other Residential – \$250.00 hearing fee

*\* An application shall be scheduled to be heard once all required materials have been submitted and it is deemed complete by the Secretary to the Board. You will need to include fourteen (14) copies of the required information. Please see pages 3 – 4 of this application for further instruction and information.*

**Project specifics/description:**

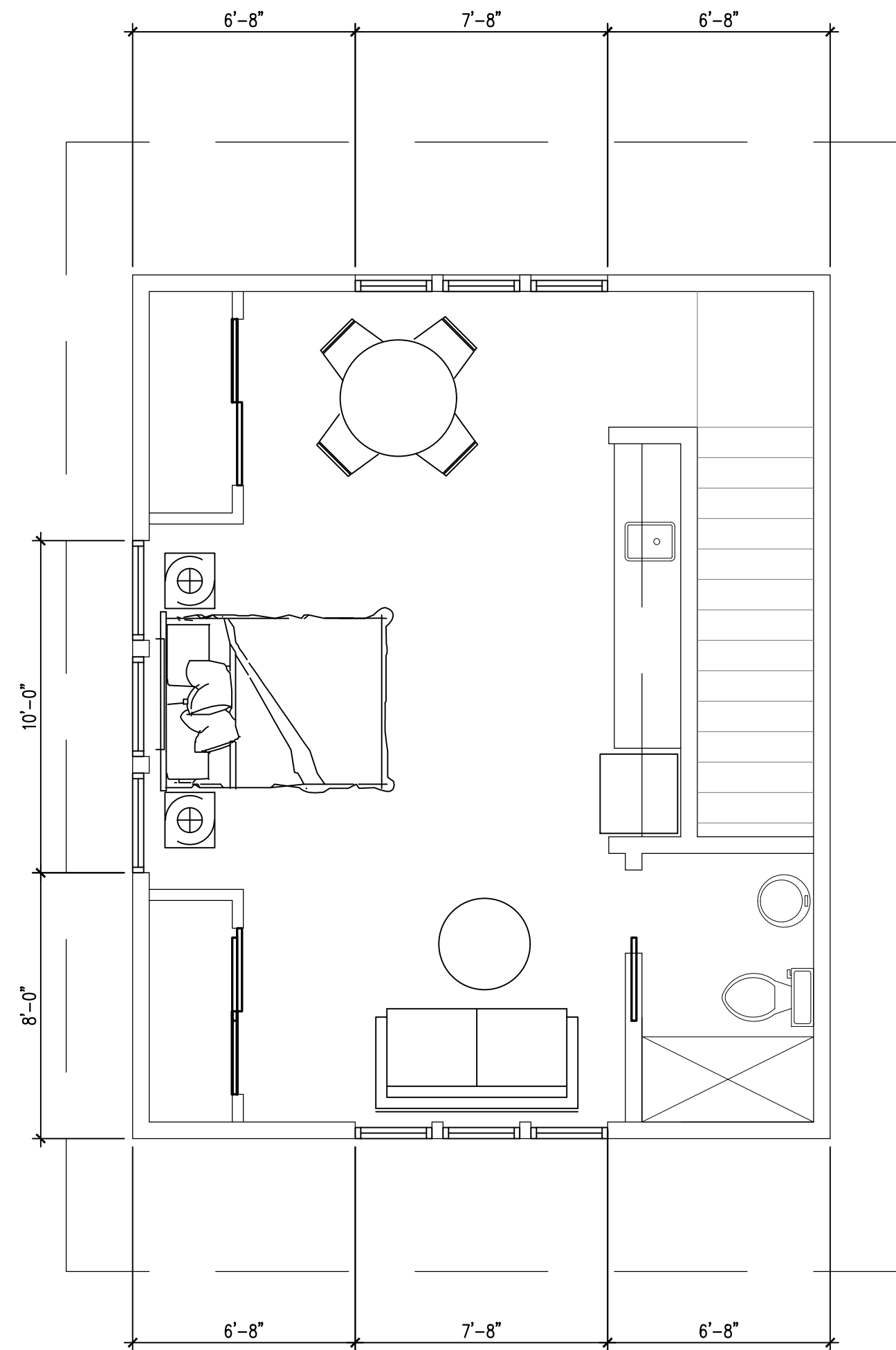
**THE PROJECT IS THE DEMOLITION OF AN EXISTING SHED  
 AND THE CONSTRUCTION OF A NEW GARAGE AND RESIDENTIAL UNIT.**

*I, the undersigned applicant, understand that payment of these fees does not entitle me to approval and that no refund of these fees will be made. I have reviewed the applicable zoning requirements and understand that I must be present on the date of the Architectural Review Board meeting.*

Applicant Signature

12/31/20

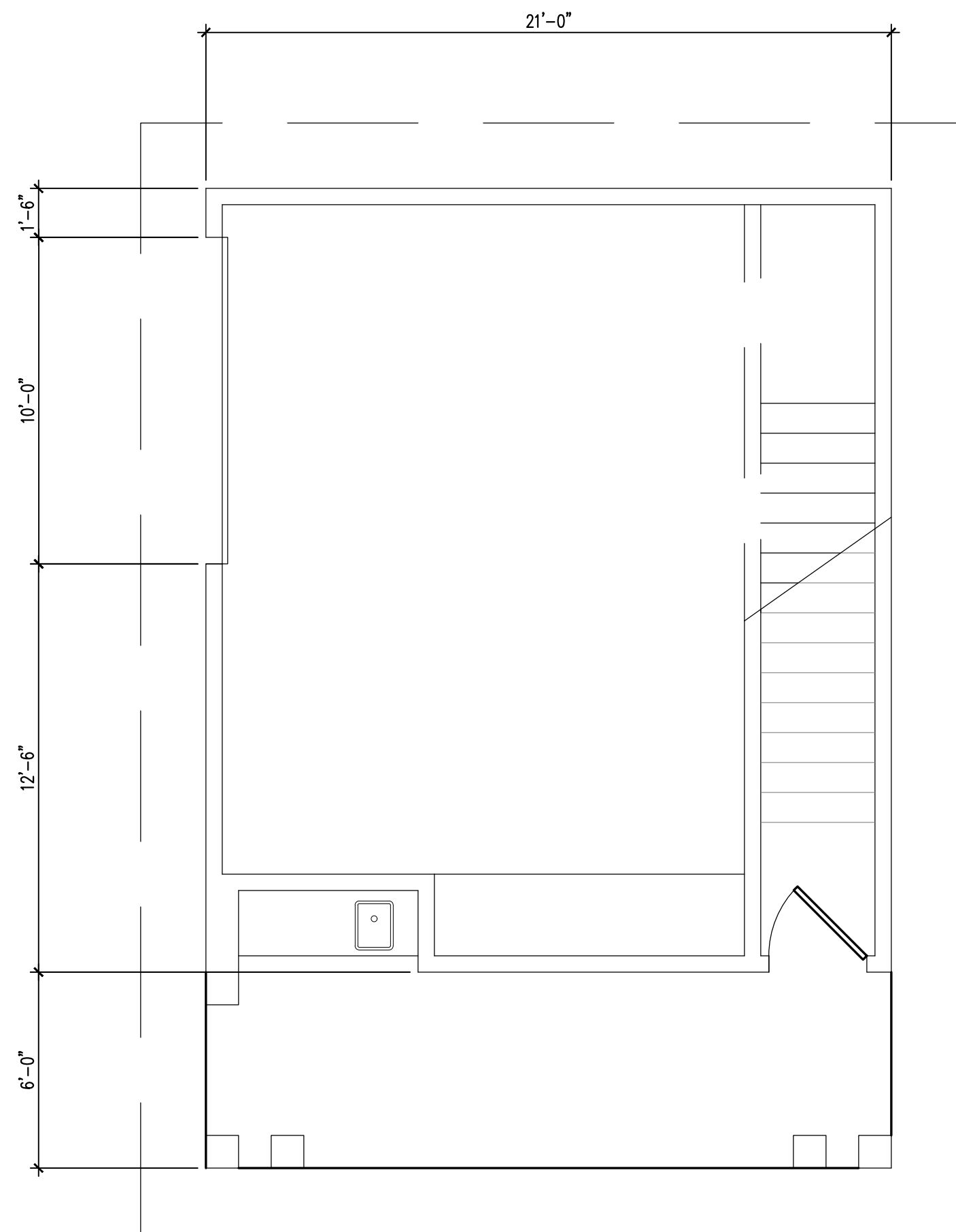
Date



3  
A-101

### 2ND FLOOR PLAN

SCALE: 1/4" = 1'-0"

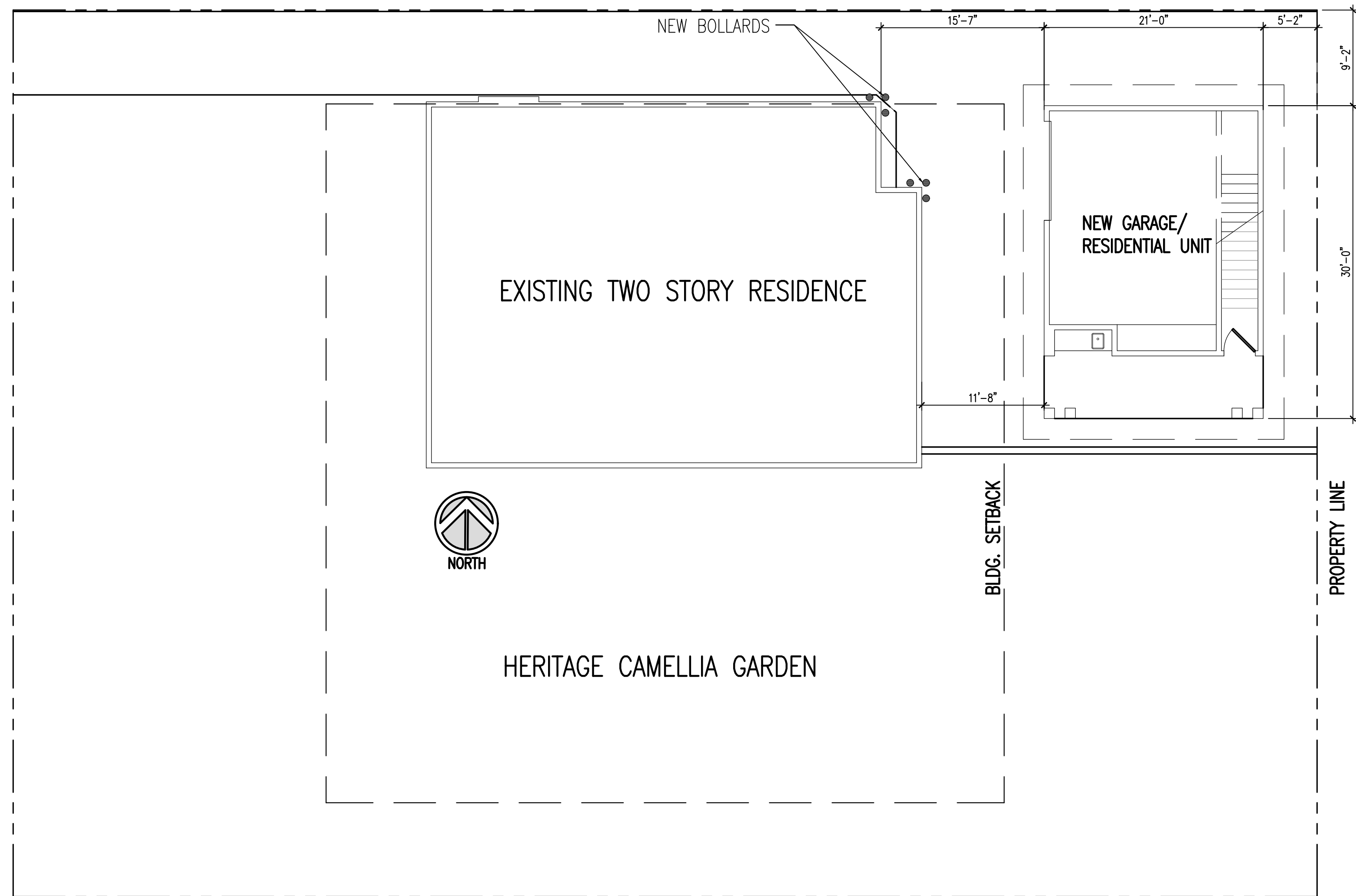


2  
A-101

### 1ST FLOOR PLAN

SCALE: 1/4" = 1'-0"

SPRING STREET



1  
A-101

### SITE PLAN

SCALE: 1/8" = 1'-0"

smp.

SMP Architecture, P.A.  
40 S. PALAFOX STREET • SUITE 202  
PENSACOLA, FLORIDA 32502 • P 850.432.7772  
www.smp-arch.com • AAC001828

Listen. Interpret. Translate.

CERTIFICATION :

SHERRILL RESIDENCE  
1380 N. SPRING ST  
PENSACOLA, FL

ALL DRAWINGS AND WRITTEN MATERIAL  
HEREIN CONSTITUTE ORIGINAL AND UN-  
PUBLISHED WORK OF THE ARCHITECT  
AND MAY NOT BE DUPLICATED IN ANY  
PART WITHOUT THE WRITTEN CONSENT  
OF THE ARCHITECT.

REVISIONS :

DRAWN BY : PDP

CHECKED BY :

PROJECT NO.

DATE : 1/28/21

SHEET TITLE :

PLANS AND ELEVS

SHEET NO. :

A-101

©2020 SMP ARCHITECTURE

Listen. Interpret. Translate.

CERTIFICATION :

SHERRILL RESIDENCE  
1380 N. SPRING ST  
PENSACOLA, FL

ALL DRAWINGS AND WRITTEN MATERIAL  
HEREIN CONSTITUTE ORIGINAL AND UN-  
PUBLISHED WORK OF THE ARCHITECT  
AND MAY NOT BE DUPLICATED IN ANY  
PART WITHOUT THE WRITTEN CONSENT  
OF THE ARCHITECT.

REVISIONS :

DRAWN BY : PDP

CHECKED BY :

PROJECT NO.

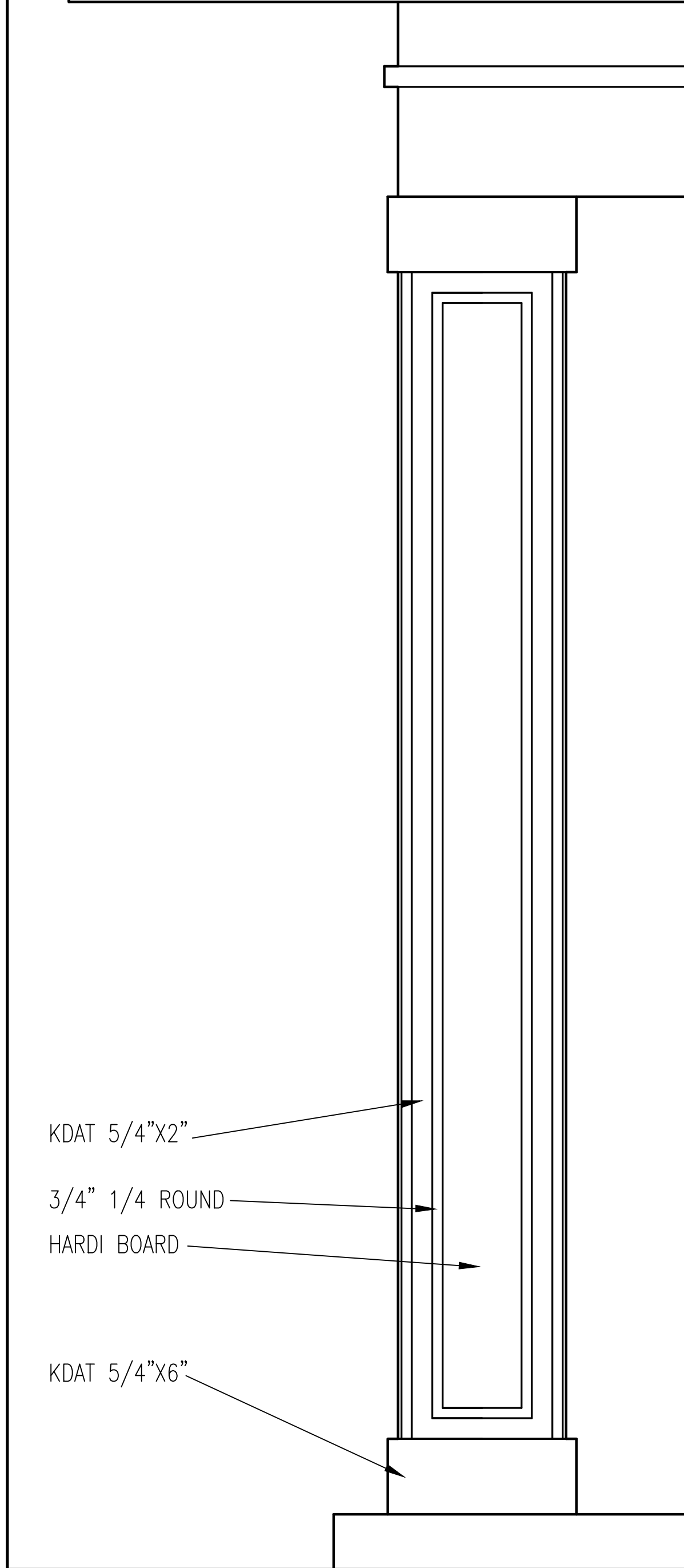
DATE : 1/28/21

SHEET TITLE :  
ELEVATIONS  
AND DETAILS

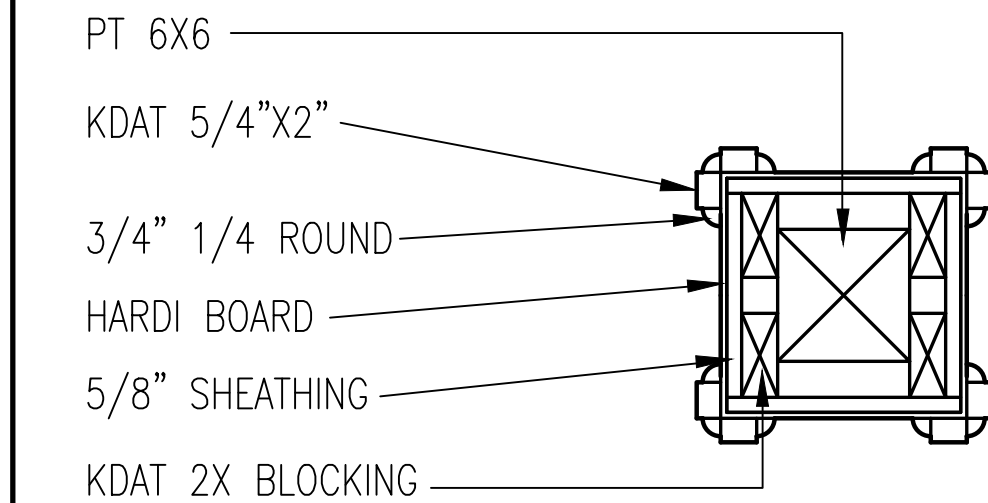
SHEET NO. :

A-102

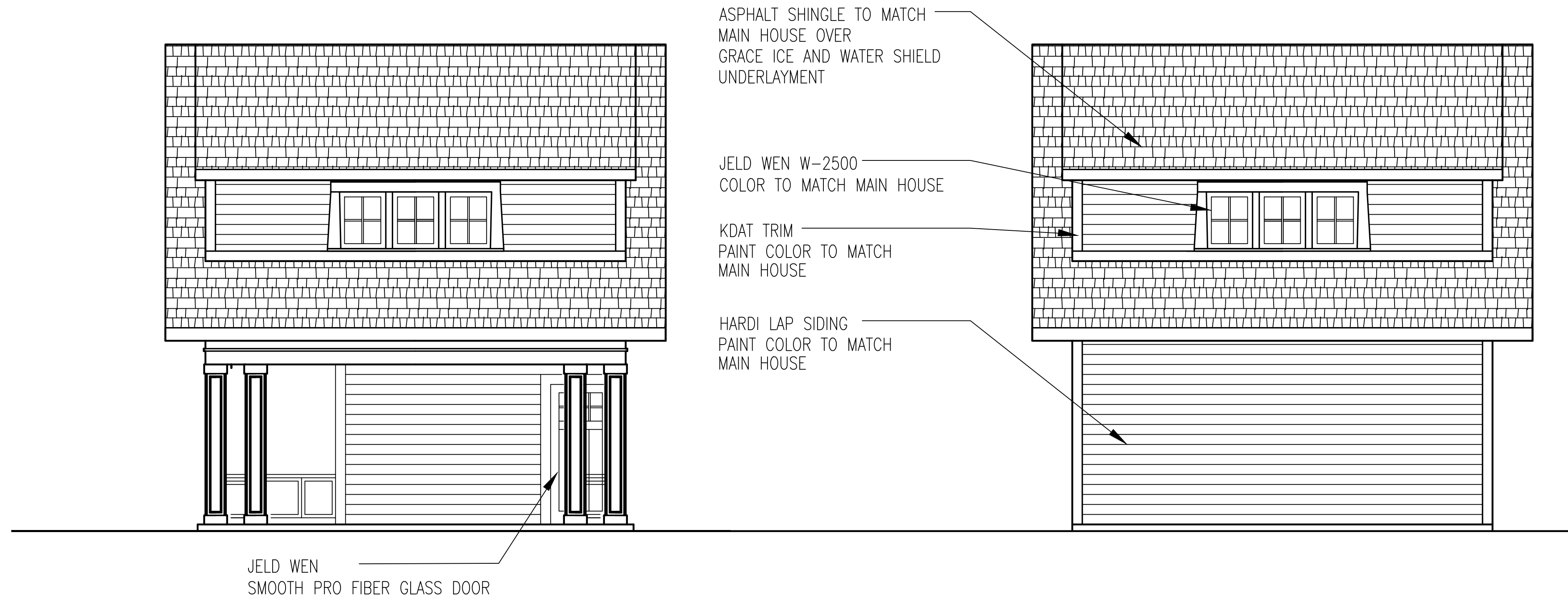
©2020 SMP ARCHITECTURE



1 COLUMN ELEVATION  
SCALE: 1 1/2" = 1'-0"

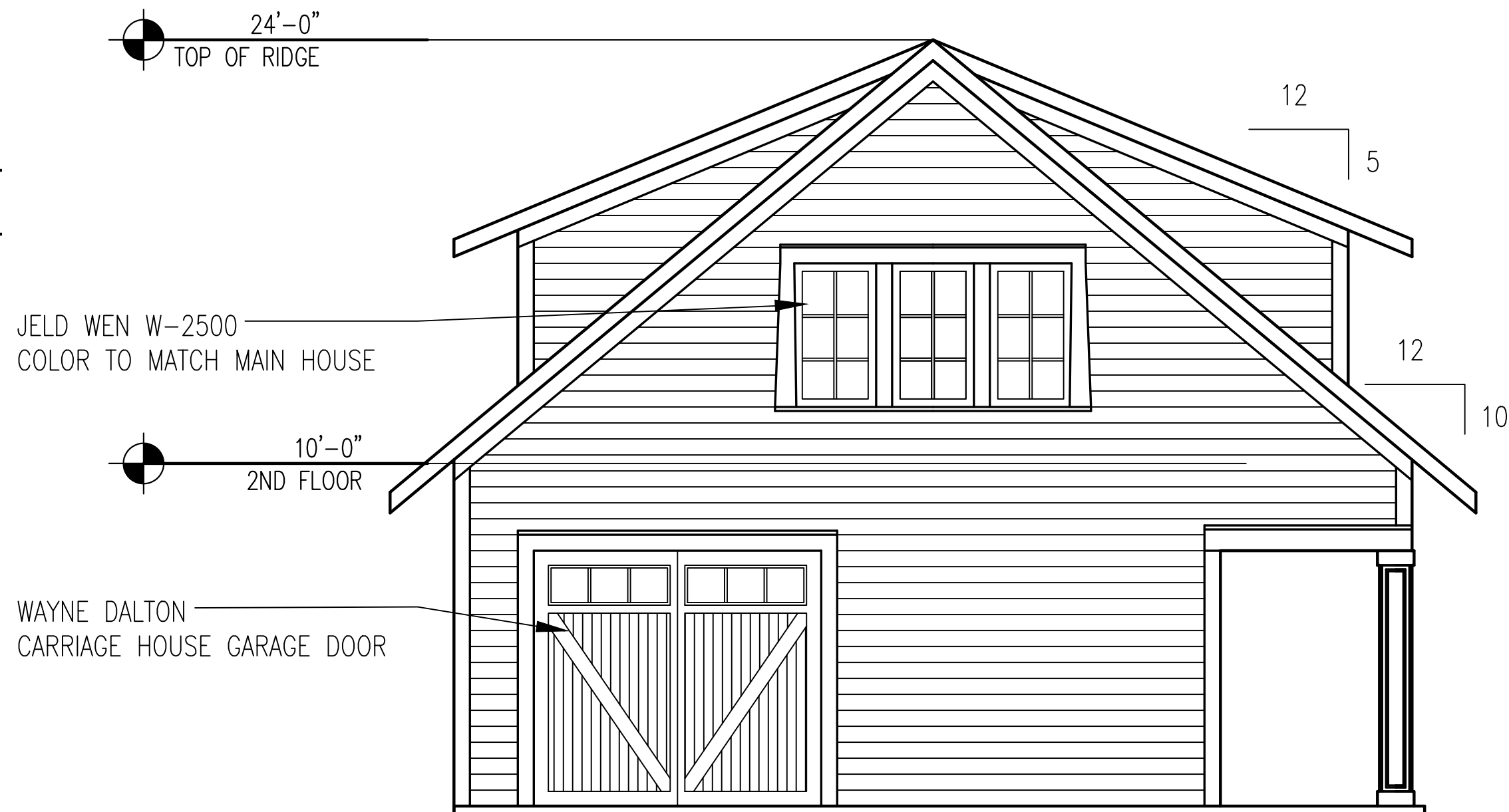


4 COLUMN PLAN DETAIL  
SCALE: 1-1/2"=1'-0"

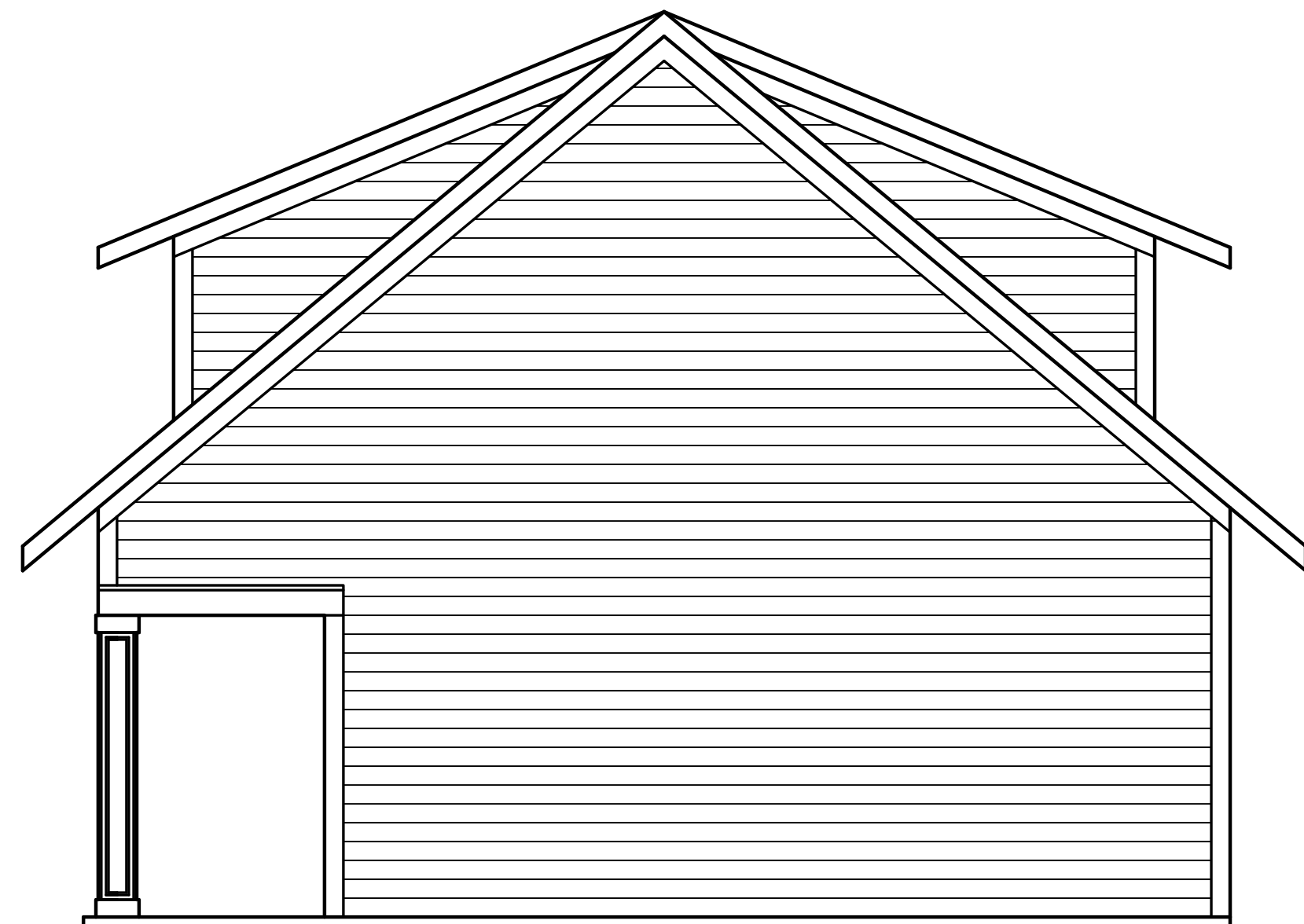


2 SOUTH ELEVATION  
SCALE: 1/4" = 1'-0"

3 NORTH ELEVATION  
SCALE: 1/4" = 1'-0"



5 WEST ELEVATION  
SCALE: 1/4" = 1'-0"



6 WEST ELEVATION  
SCALE: 1/4" = 1'-0"

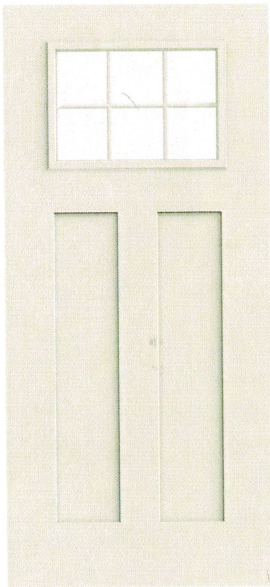


PRICING

Many options will influence the price of your door.  
To get an estimate, contact your JELD-WEN dealer.

WHERE TO BUY (/WHERE-TO-BUY?  
PID=147201)

GET HELP ON YOUR PROJECT (/EN-  
US/GET-HELP?  
PID=147201&JWCT\_GETHELP=PRODUCTPAGE)



Model Overview

PROJECT TYPE

New construction and replacement

MAINTENANCE LEVEL

Minimal

WARRANTY

Lifetime Warranty

COLORS & FINISHES

1 Finish Option

GLASS

Energy efficient, tinted and privacy.

CONSTRUCTION

ADA Requirements  
Impact Resistant Doors  
Smooth-Pro Construction

PANEL OPTIONS

Panel options

[Garage Door Design Center \(/garage-door-design-center\)](#)  
[Architect Resource Center \(/architect-resource-center\)](#)  
[Find a Dealer \(/find-a-dealer\)](#)

Search...

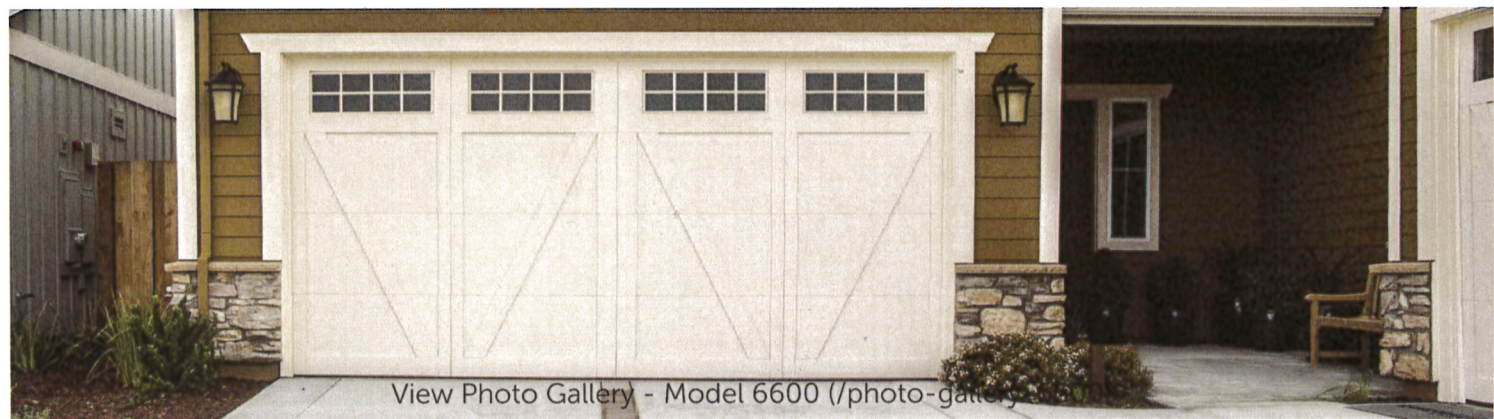
**Wayne Dalton**  
GARAGE DOORS  
COMMERCIAL DOORS (/COMMERCIAL-DOORS)

SUPPORT

DEALER RESOURCES (/DEALER-RESOURCES)

# Carriage House Style Garage Doors

Model 6600



[View Photo Gallery - Model 6600 \(/photo-gallery\)](#)

## WAYNE DALTON ADVANTAGES

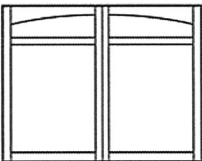
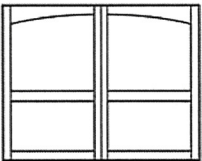
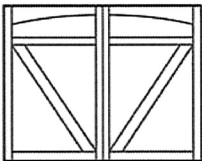
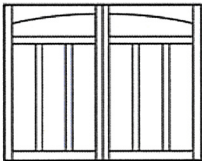
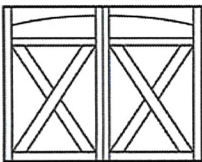
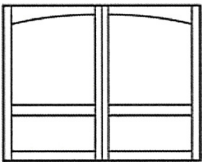
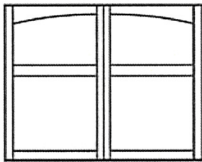
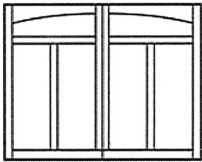
Made with a polyurethane foam insulation core between two sheets of steel and DecaTrim™ II overlays, the Model 6600 Carriage House Style Garage Doors are durable and a unique way to add curb appeal to your home. With 11 different carriage house designs, you are sure to find the perfect garage door to complement your home.

These Carriage House Style Garage Doors come with foamed-in-place polyurethane insulation with an R-value of 12.12\*, which can improve your home's thermal efficiency, block street noise and make the door operate more quietly. This door also offers wind load options, quiet rollers, and snug-fitting tongue-and-groove section joints that reduce wind and weather from entering the garage.

\*Wayne Dalton uses a calculated door section R-value for our insulated doors.

- DESIGN
- COLORS
- WINDOWS
- HARDWARE
- FEATURES
- DOCUMENTS

### Arched Top Garage Door Design Options

 Arlington	 Ashburn	 Bellview	 Brunswick
 Lexington	 Richmond	 Savannah	 Somerset



[Our Message on Coronavirus/COVID-19\(/notifications/covid19-response\)](#)

WHERE TO BUY  
(/WHERE-TO-BUY)

GET HELP ON YOUR PROJECT (/EN-US/GET-HELP?  
JWCT\_GETHELP=UTILITYLINKS)

FOR INVESTORS  
(HTTP://INVESTORS.JELD-  
WEN.COM/)

USA  
PHILIP

WELCOME



## W-2500™ Clad-Wood

These stylish, energy-efficient wood windows are as durable as they are beautiful. Designed to protect against the elements, our W-2500™ Clad-Wood windows offer exceptional longevity & elegance with designs for a wide range of architectural styles.

5  
Models Available

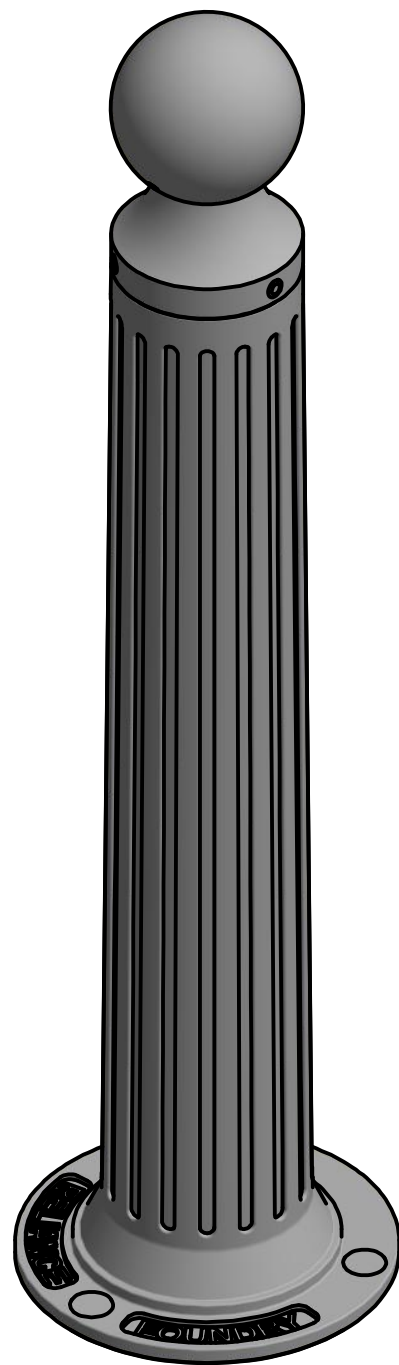
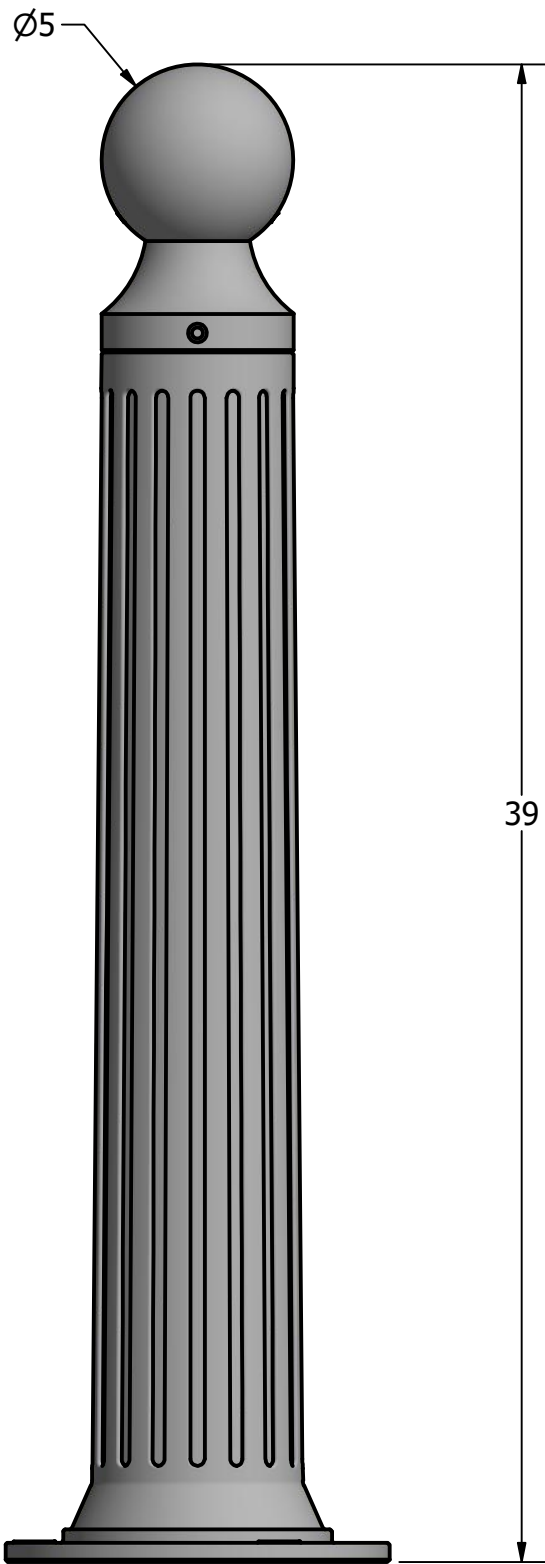
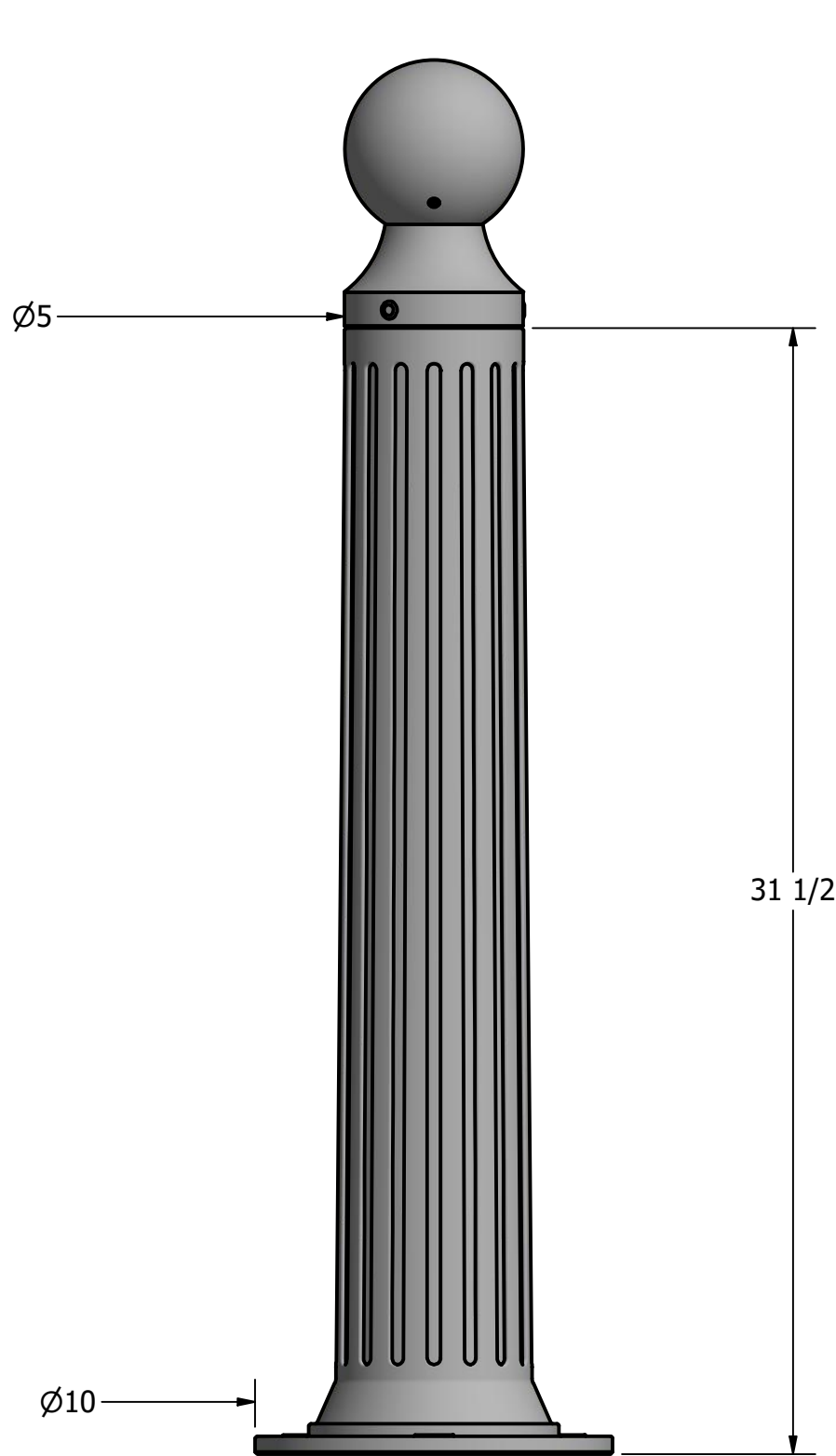
Moderate  
Maintenance Level

\$ \$ \$

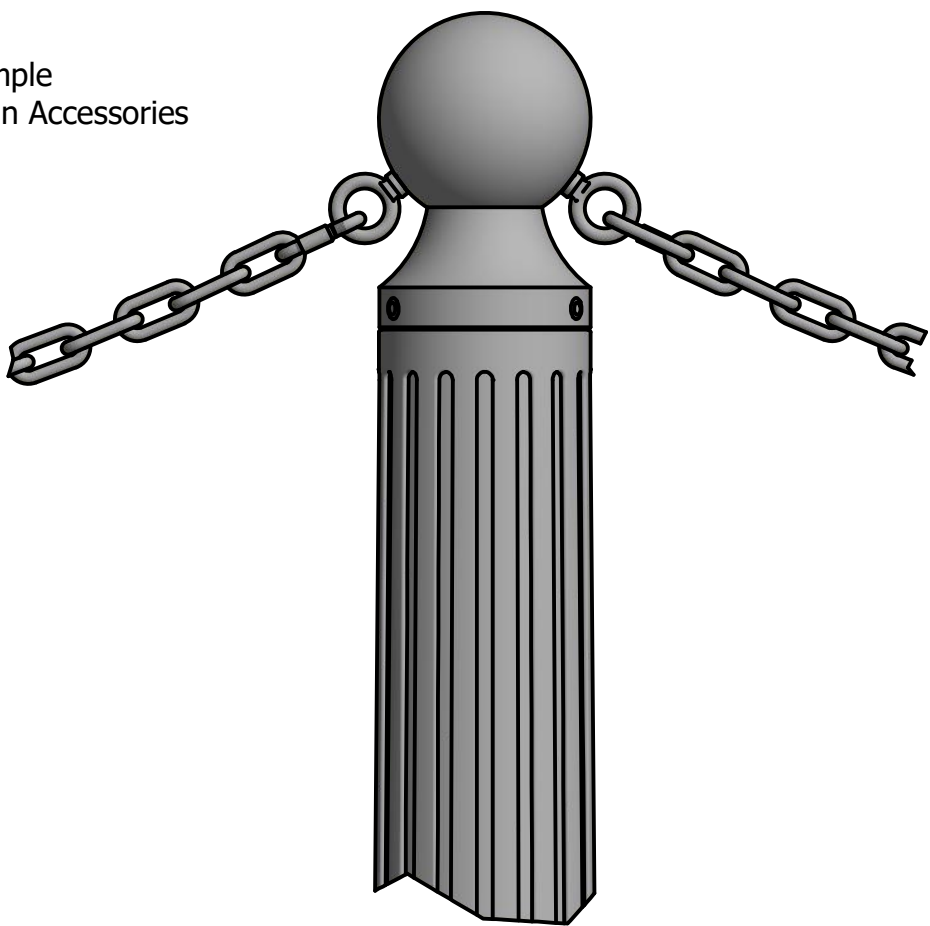
Price Range

LIMITED  
20-YEAR  
WARRANTY

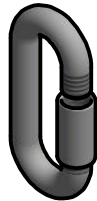
# Bollard R-7530



Installation Sample  
with 5/16" Chain Accessories



Bollard Chain Eye 3/8"  
(Powder Coated)



Quick Link Connector 5/16"  
(Powder Coated)



Bollard Chain 5/16"  
(Powder Coated)

## Optional Accessories:

- Chain Eye
- Quick link
- Chain (5/16")
- Padlock, Brass (1 3/4")
- Padlock, Stainless Steel (2")

See Reliance Foundry's optional accessories at:  
[www.reliance-foundry.com/bollard/accessories-bollards](http://www.reliance-foundry.com/bollard/accessories-bollards)

## General Description:

The R-7530 Decorative Bollard features a narrow body, suitable for high-traffic locations and lightweight removability. R-7530 bollards are made from a versatile ductile iron, featuring decorative fluting and spherical top castings. Bollard surfaces are protected by a durable powder coating, available in 6 standard colors. Use as fixed, stand-alone bollards or cover impact-resistant security posts. Unique design allows R-7530 bollards to be flush-mounted to existing concrete surfaces. Removable mountings are available.

## Specifications:

Height: 39"  
Base Diameter: 10"  
Weight: 62 lbs ( Bollard Only )  
Material: Ductile Iron  
Max. Interior Security Post Size:  
3 1/2" x 29" (Diameter x Height)

## Finish Options:

○ Polyester Powdercoated

See Reliance Foundry's standard color options at:  
[www.reliance-foundry.com/bollard/colors-bollards](http://www.reliance-foundry.com/bollard/colors-bollards)

## Installation Options:

- Fixed - Anchor Casting in New Concrete (see sheet 2 of 13)
- Fixed - Concrete Insert Anchor in Existing Concrete (see sheet 3 of 13)
- Fixed - Adhesive Anchor in Existing Concrete (see sheet 4 of 13)
- Fixed - Anchor Casting with Concrete Form (see sheet 5 of 13)
- Fixed - Flanged in Existing Concrete (see sheet 6 of 13)
- Post Cover - New Post in New Concrete (see sheet 7 of 13)
- Post Cover - New Post in Existing Concrete (see sheet 8 of 13)
- Post Cover - Existing Post with Adhesive Anchor (see sheet 9 of 13)
- Post Cover - Existing Post with Concrete Anchor (see sheet 10 of 13)
- Removable - Anchor Casting in New Concrete (see sheet 11 of 13)
- Removable - Concrete Insert Anchor in Existing Concrete (see sheet 12 of 13)
- Removable - Premium Retractable in New Concrete (see sheet 13 of 13)

For more information on bollard post installation, please visit:  
[www.reliance-foundry.com/bollard/installation-bollards](http://www.reliance-foundry.com/bollard/installation-bollards)

## Care and Maintenance:

Reliance's line of bollards are finished with a long-lasting powder-coating. Proper care and maintenance are required. Regularly-performed inspections and routine cleaning will ensure that a bollard retains its aesthetic appeal and does not become damaged by the elements.

See Reliance Foundry's maintenance guide at:  
[www.reliance-foundry.com/bollard/maintenance-bollards](http://www.reliance-foundry.com/bollard/maintenance-bollards)

RELIANCE FOUNDRY  
— SINCE 1925 —

Unit 207, 6450 - 148 Street, Surrey, BC V3S 7G7, Canada  
1-877-789-3245 info@reliance-foundry.com  
[www.reliance-foundry.com](http://www.reliance-foundry.com)

TITLE

Bollard R-7530

SIZE

C

DWG NO

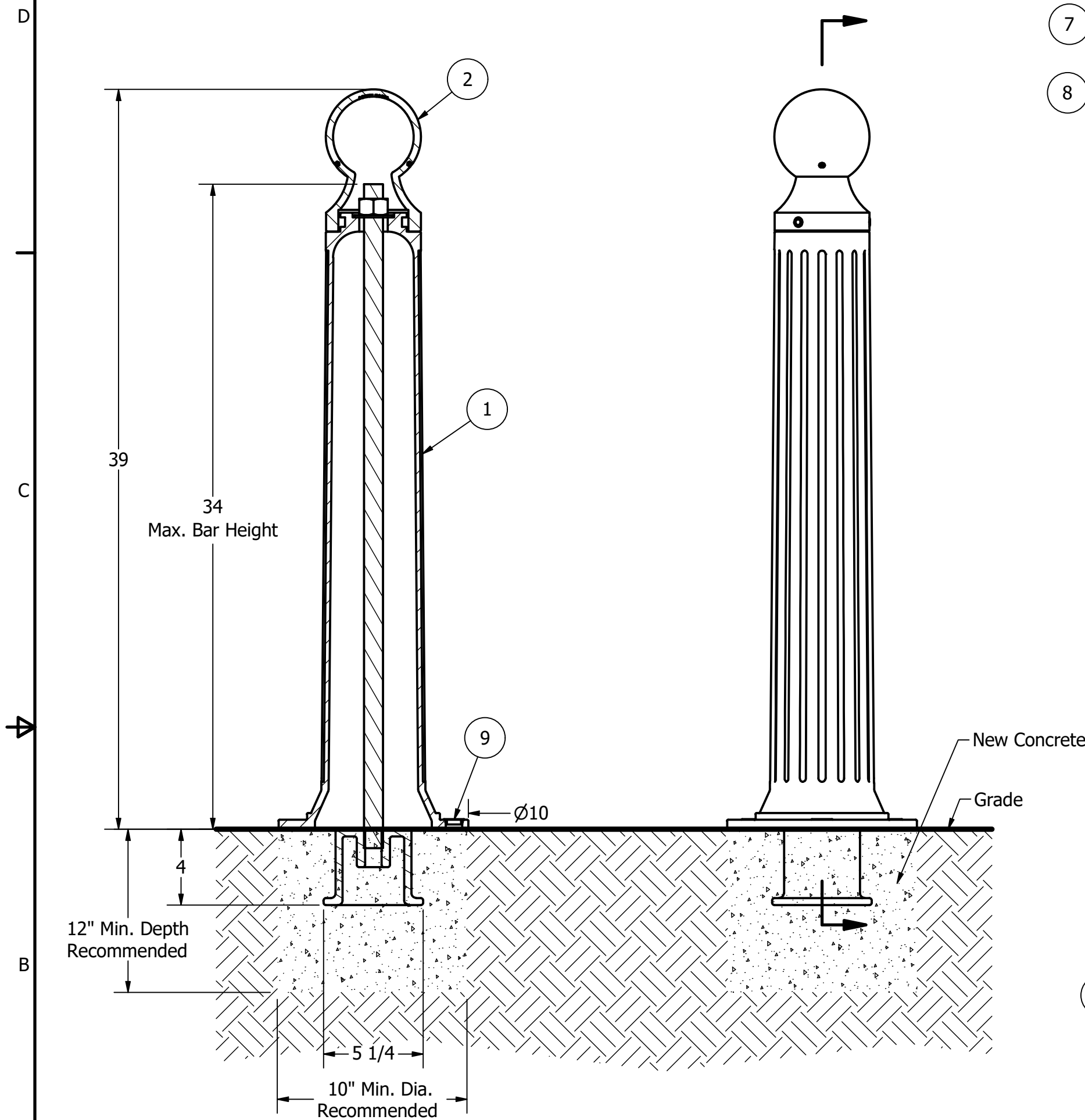
R7530

REV

C7

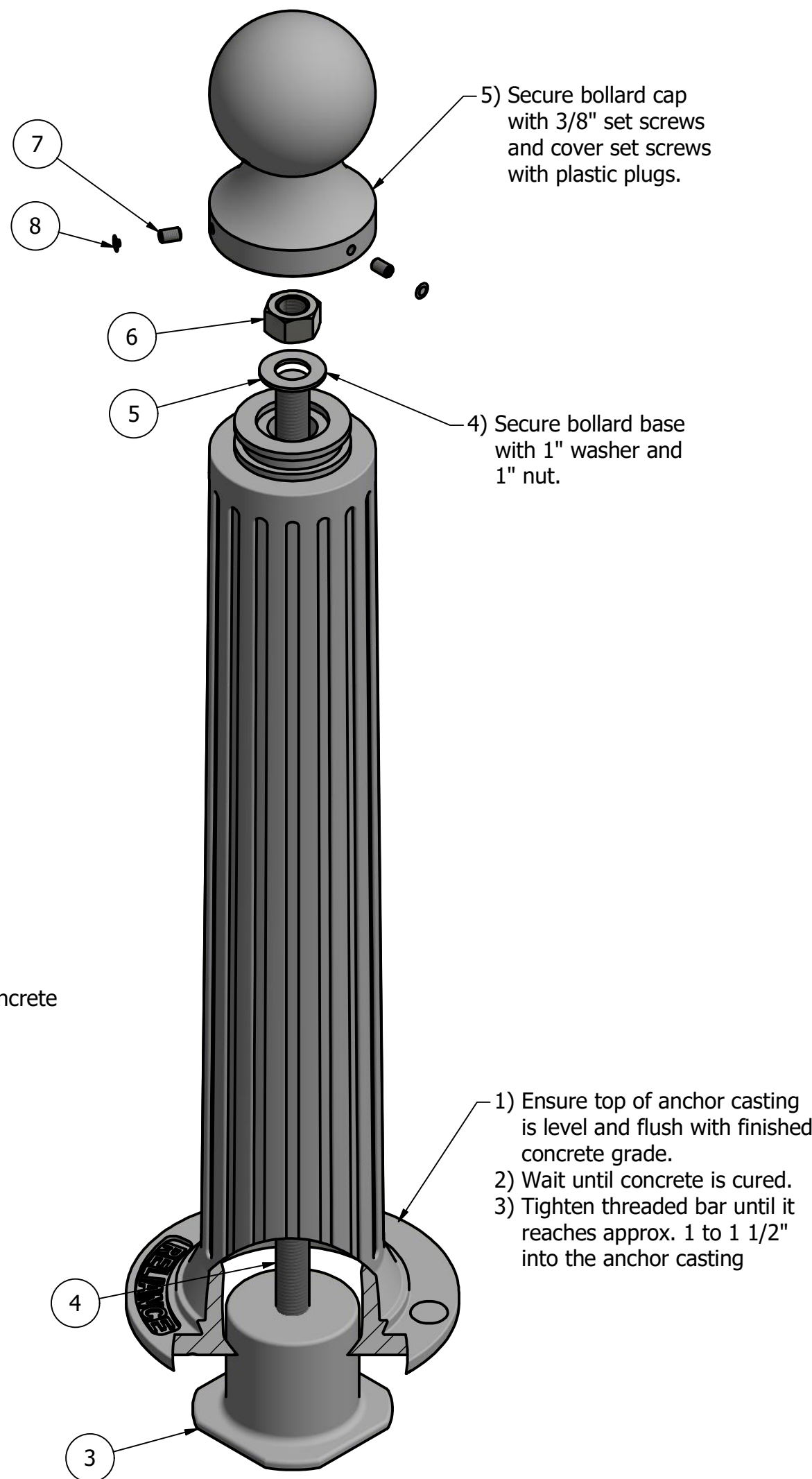


# Bollard R-7530



## Notes:

- 1) Bollard post is provided as shown. Concrete, foundation and/or installation ordered separately or provided by others.
- 2) Minimum foundation sizes depend on local soil conditions, weather conditions, and engineering requirements.
- 3) Dimensions provided herein is for reference only. Please consult Reliance Foundry sales professionals if any dimension is critical to your particular installation.
- 4) Reliance Foundry reserves the right to amend design and specifications without prior notice for product improvement.



## Tools needed:

- 1) Measuring tape
- 2) 1 1/2" wrench
- 3) 3/16" hex key

## General Description:

The R-7530 Decorative Bollard features a narrow body, suitable for high-traffic locations and lightweight removability. R-7530 bollards are made from a versatile ductile iron, featuring decorative fluting and spherical top castings. Bollard surfaces are protected by a durable powder coating, available in 6 standard colors. Use as fixed, stand-alone bollards or cover impact-resistant security posts. Unique design allows R-7530 bollards to be flush-mounted to existing concrete surfaces. Removable mountings are available.

## Specifications:

Height: 39"  
Base Diameter: 10"  
Weight: 62 lbs ( Bollard Only )  
Material: Ductile Iron  
Max. Interior Security Post Size:  
3 1/2" x 29" (Diameter x Height)

## Finish Options:

- ⊙ Polyester Powdercoated

See Reliance Foundry's standard color options at:  
[www.reliance-foundry.com/bollard/colors-bollards](http://www.reliance-foundry.com/bollard/colors-bollards)

## Installation Options:

- ⊙ Fixed - Anchor Casting in New Concrete (see sheet 2 of 13)
- ⊙ Fixed - Concrete Insert Anchor in Existing Concrete (see sheet 3 of 13)
- ⊙ Fixed - Adhesive Anchor in Existing Concrete (see sheet 4 of 13)
- ⊙ Fixed - Anchor Casting with Concrete Form (see sheet 5 of 13)
- ⊙ Fixed - Flanged in Existing Concrete (see sheet 6 of 13)
- ⊙ Post Cover - New Post in New Concrete (see sheet 7 of 13)
- ⊙ Post Cover - New Post in Existing Concrete (see sheet 8 of 13)
- ⊙ Post Cover - Existing Post with Adhesive Anchor (see sheet 9 of 13)
- ⊙ Post Cover - Existing Post with Concrete Anchor (see sheet 10 of 13)
- ⊙ Removable - Anchor Casting in New Concrete (see sheet 11 of 13)
- ⊙ Removable - Concrete Insert Anchor in Existing Concrete (see sheet 12 of 13)
- ⊙ Removable - Premium Retractable in New Concrete (see sheet 13 of 13)

For more information on bollard post installation, please visit:  
[www.reliance-foundry.com/bollard/installation-bollards](http://www.reliance-foundry.com/bollard/installation-bollards)

## Care and Maintenance:

Reliance's line of bollards are finished with a long-lasting powder-coating. Proper care and maintenance are required. Regularly-performed inspections and routine cleaning will ensure that a bollard retains its aesthetic appeal and does not become damaged by the elements.

See Reliance Foundry's maintenance guide at:  
[www.reliance-foundry.com/bollard/maintenance-bollards](http://www.reliance-foundry.com/bollard/maintenance-bollards)

## PARTS LIST

ITEM	QTY	PART NUMBER	DESCRIPTION	MATERIAL	WEIGHT
1	1	R7530B	R7530 Base	Ductile Iron Powder Coated	52 lbs
2	1	R7530C	R7530 Cap	Ductile Iron Powder Coated	10 lbs
3	1	R7500AN 1"	R7500 Anchor Casting 1"	Ductile Iron Hot Dip Galvanized	8 3/8 lbs
4	1	R7500BAR 1"	R7500 Threaded Bar 1" x 35"	Steel Plated	6 1/2 lbs
5	1	Washer 1" OD 2"	Washer 1" OD 2" Thick 1/8"	Steel Plated	1/8 lbs
6	1	Hex Nut 1"	Hex Nut 1" - requires 1 1/2" wrench	Steel Plated	1/4 lbs
7	3	Hexagon Socket Set Screw 3/8" x 5/8"	Hexagon Socket Set Screw 3/8" x 5/8" - requires 3/16" hex key	Stainless Steel	
8	3	Polyethylene Plug 3/8"	Polyethylene Plug 3/8"	LDPE Black	
9	3	Polyethylene Plug 7/8"	Polyethylene Plug 7/8"	Polyethylene Plastic	

COPYRIGHT RESERVED THIS PLAN DRAWING AND DESIGN ARE, AND AT ALL TIMES REMAIN, THE EXCLUSIVE PROPERTY OF RELIANCE FOUNDRY CO. LTD.

**RELIANCE FOUNDRY**  
— SINCE 1925 —

Unit 207, 6450 - 148 Street, Surrey, BC V3S 7G7, Canada  
1-877-789-3245 info@reliance-foundry.com  
[www.reliance-foundry.com](http://www.reliance-foundry.com)

**Bollard R-7530**

SIZE	DWG NO	REV
C	R7530	C7

NOT TO SCALE SHEET 2 OF 13



## Siding

**Simply White**  
OC-117

## Trim

**Cliffside Gray**  
PM-5

## Doors

**Hale Navy**  
HC-154



