



City of
Pensacola
America's First Settlement
And Most Historic City

Architectural Review Board Application
Full Board Review

Application Date: 26 April 2021

Project Address: 903 N. Barcelona St

Applicant: Lesa Gibson

Applicant's Address: 903 N. Barcelona St

Email: Lesagibson@yahoo.com Phone: 504-615-8454

Property Owner: Erik + Lesa Gibson
(If different from Applicant)

District: ☒ PHD ☐ NHPD ☐ OEHPD ☐ PHBD ☐ GCD

Application is hereby made for the project as described herein:

- ☒ Residential Homestead – \$50.00 hearing fee
☐ Commercial/Other Residential – \$250.00 hearing fee

* An application shall be scheduled to be heard once all required materials have been submitted and it is deemed complete by the Secretary to the Board. You will need to include ten (10) copies of the required information. Please see pages 3 – 4 of this application for further instruction and information.

Project specifics/description:

- Replace plate glass windows facing N. Barcelona St with 3 equal size new wooden 35 over 1 configuration windows. (fig 1)
- Replace plate glass facing W. Strong St with 2 Triple one over one box sashes. (fig 2)
- Replace 2nd floor window facing W Strong St which is currently plexiglass between stops with
could add page

I, the undersigned applicant, understand that payment of these fees does not entitle me to approval and that no refund of these fees will be made. I have reviewed the applicable zoning requirements and understand that I must be present on the date of the Architectural Review Board meeting.

Lesa Gibson
Applicant Signature

26 April 2021
Date

con'd

a wooden 35 over 1 configuration window (fig 3).

- Place 3 wooden storm windows on 1st floor W. Strong St side (fig 4); 1 on 2nd floor window facing W. Strong St (fig 5); and the last 2 on the 1st floor facing the back yard (fig 6).
- Place historic replica, lowered shutters on three 2nd floor windows W. Strong St side (fig 7); and 2 on 2nd floor windows facing the back yard (fig 8). Figure 9 is a picture of these shutters on a building in Mobile, AL.
- All windows will be painted to match current trim as pictured. White & beige
- Wooden shutters will be painted Mobile Green. Sample color will be provided at meeting.

Hastings Read of Oakleigh custom woodwork and his wife, Anne, will represent me at the meeting.

903 N. Barcelona Street – Front view



903 N. Barcelona Street – Side view towards 905



903 N. Barcelona Street – Back view



903 N. Barcelona Street – Side towards W. Strong Street





March 14, 2021

Lesa Gibson
903 Barcelona Street
Pensacola, FL

Dear Lesa,

for PORCH
Re: New Window Sashes and Storms for Guest Bedroom

Thank you for asking us to quote for making a triple box sashes facing Barcelona Street and two triple one-over-one box sashes

Specifications

There will be three new box sashes units comprising of a jamb, sill and sashes. Two triple units in a one-over-one style to match the south side of the house. One triple unit in a 35-over-one style to match the front of the house windows.

Materials, Finish and Construction

We will use 8Q red grandis for the windows, the thickness will be 1 3/8". They will be made with European style thermal sealing and gaskets and a spring balance, as the bottom sashes will be operable. The jambs will be 4Q red grandis made to authentic historical accuracy, in a 6" jamb. The windows will be primed and ready for top coat by your contractor.

Timing

Once the contract is signed, we will start to make the windows. estimated timing to be approximately eight to ten weeks to complete the project.

Cost and Payment Schedule

Figure 1



TRIPLE PORCH FRONT

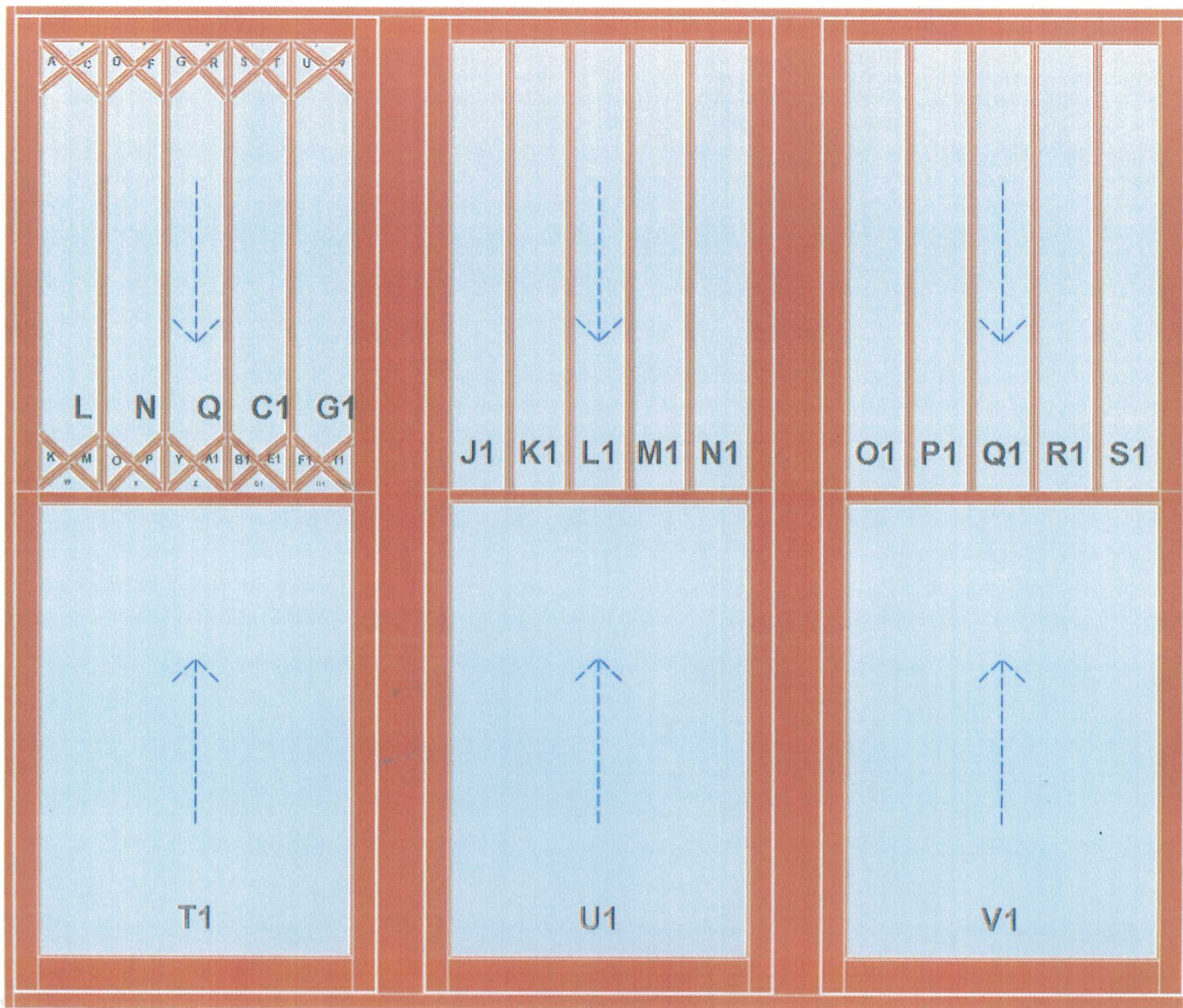
140.1 | 140.9 | 137.3 | 133.7 | 133.7 | 37.2

1,841.4

H=2,197.0

663.1

1,101.0



667.9

1,101.0

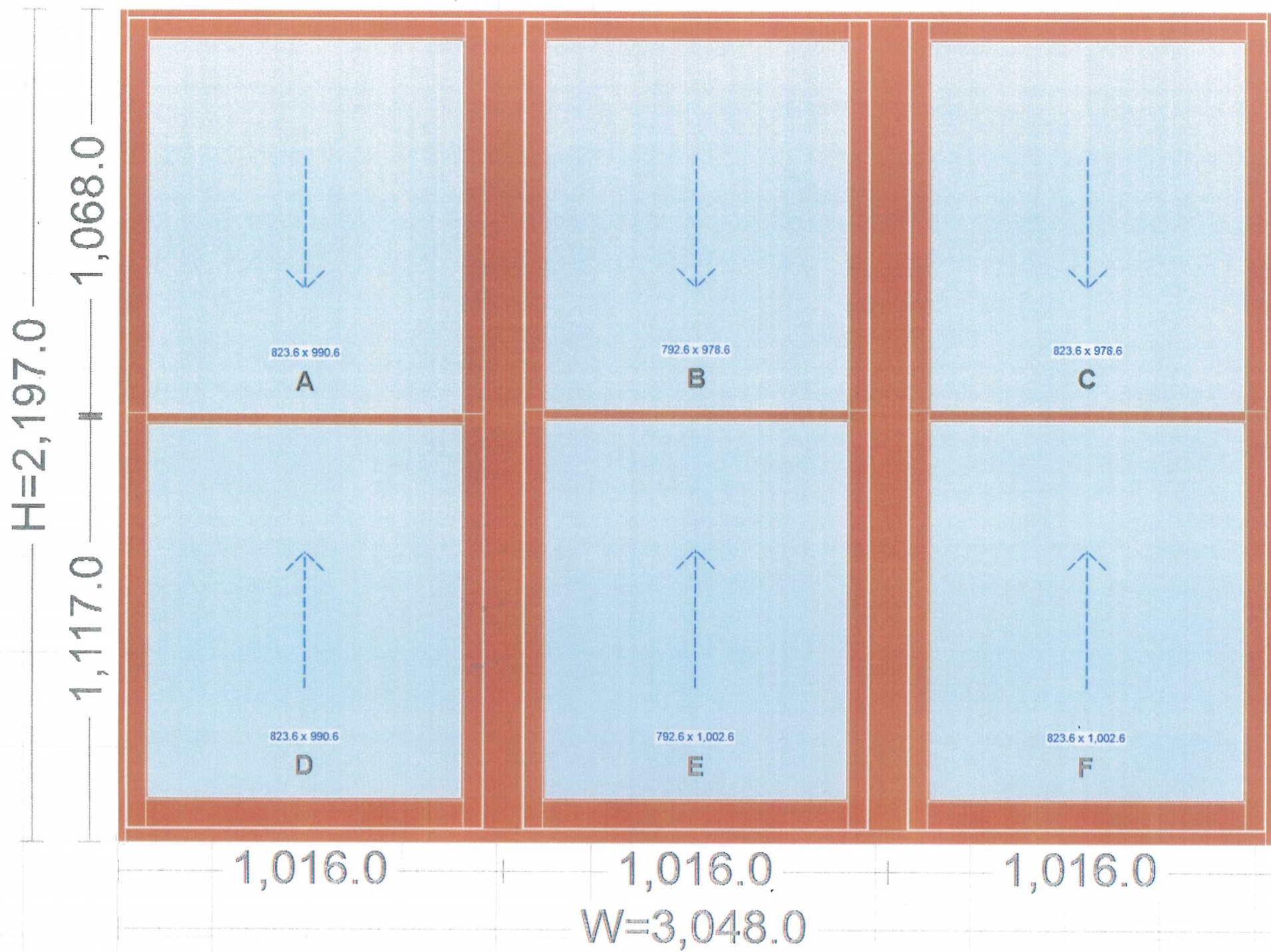
140.1 | 72.2 | 58.7 | 58.7 | 65.1 | 65.0 | 65.1 | 65.0 | 68.7 | 163.2 | 237.1 | 131.1 | 131.1 | 131.1 | 237.1 | 243.3 | 137.3 | 137.3 | 137.3 | 212.6

W=2,603.0

Figure 2



2x TRIPLE - SIDE PORCH





March 14, 2021

Lesa Gibson
903 Barcelona Street
Pensacola, FL

Dear Lesa,

Re: New Window Sashes and Storms for Guest Bedroom

Thank you for asking us to quote for making two new sashes and two interior storms for your guest bedroom.

Scope of Work

We will make 2 interior storm windows which will fit into the opening of the transom windows that open outwards in the guest bedroom. They will be made to fit up to the existing stop on the sashes and we will provide another interior stop to hold them in place. We will put Low E glass in them.

The South side window which is currently just plexiglass between stops, will be new fabrication to match your windows with a 35 over one configuration. We will provide you with new outer stop, parting line and interior stop bead.

Window Refurbishment and Materials

For new windows we will use Red Grandis (*eucalyptus grandis*) for the depth size will be made to match existing windows. We use 1/8" clear annealed glass, but if you are interested in some thermal efficiency we can install 1/8" Low E glass with a small up charge in glass cost.

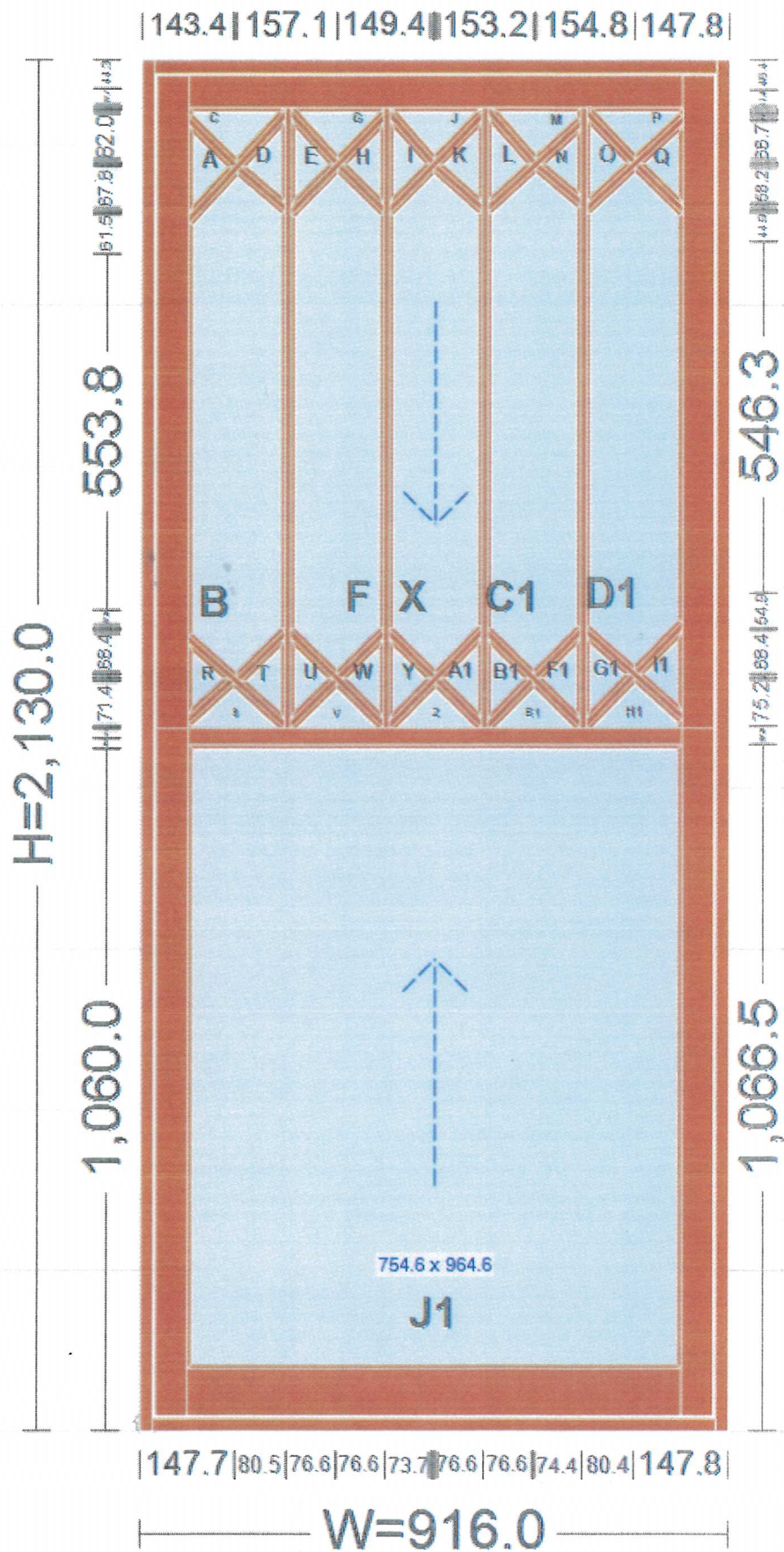
Timing

The execution of the new work usually takes four to six weeks.

Figure 3



BEDROOM - SITES ONLY





March 23, 2021

Lesa Gibson
903 North Barcelona Street
Pensacola, FL

Dear Lesa,

Re: New Storm Windows

Thank you for asking us to quote for restoring sashes and changing the glass out on your bedroom windows. There are five windows you want changed over, but we suggest you do two, then three, so your bedroom is not completely boarded up during this process.

Storm Windows

We will use Red Grandis (eucalyptus) for the storm windows, the depth size will be of the storms will be 1 3/8" to match our tooling. The storms will be made as an overlay to your specifications, with a middle rail placed to match the meeting rail on your windows. We will use 1/8" Low E glass and we will include the hardware in this price for hanging the storms. Installation of units is separate.

Timing

We estimate approximately 4 to 6 weeks for this build.

Cost

Figure 4



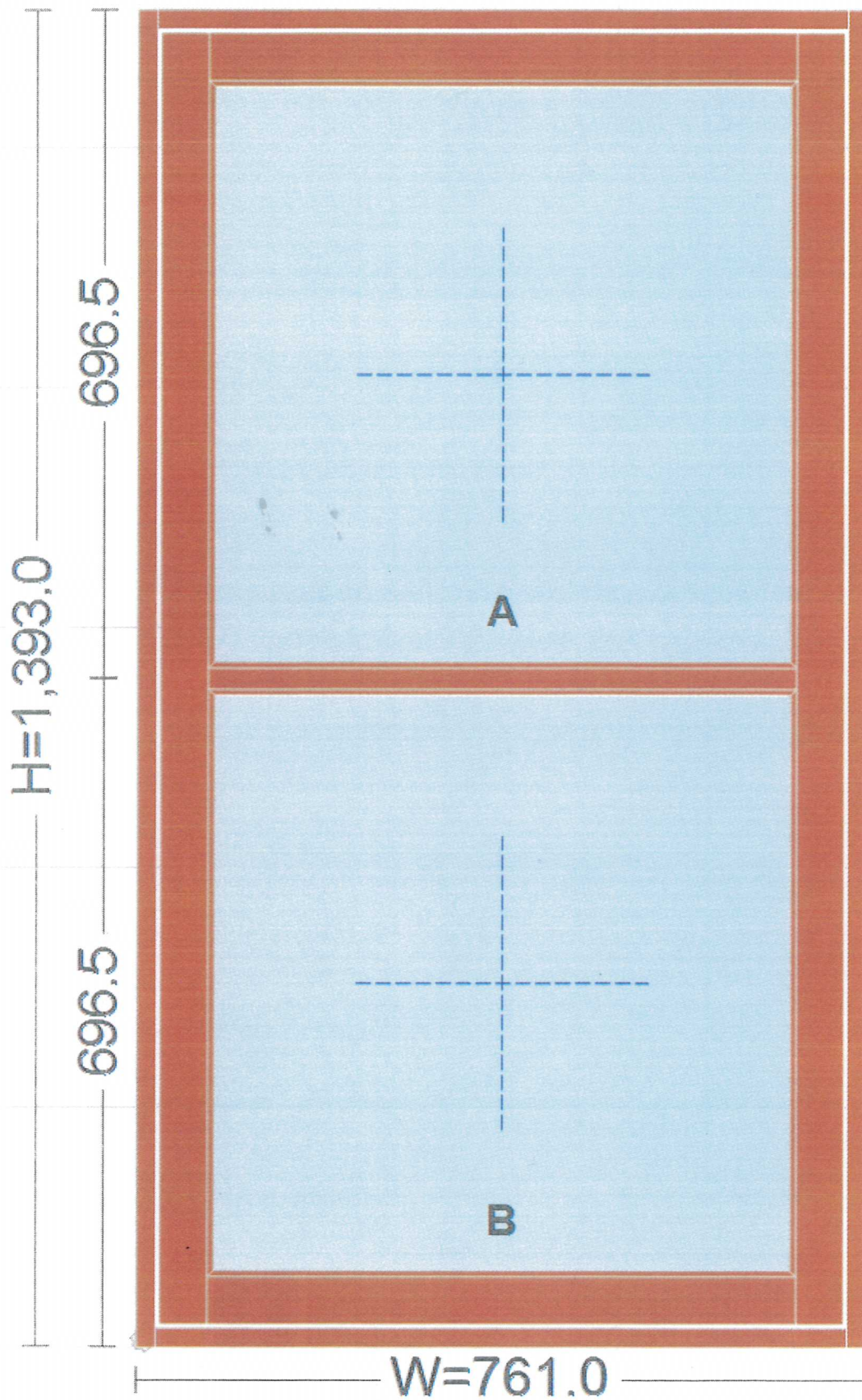
Figure 5



Figure 6



STORMS





March 23, 2021

Lesa Gibson
903 North Barcelona Street
Pensacola, FL

Dear Lesa,

Re: Shutters for your bedroom

Thank you for asking us to quote for building new shutters for your bedroom. There are five windows you want shutters for of approximately 34" wide by 84" high.

Materials, Construction and Finish

Manufactured in our workshop, we will use Red Grandis (*eucalyptus grandis*) for the shutters, patterned on the style similar to historic homes in the area, with a top, middle and bottom rail. The shutters will be made of 1 3/8" thick material with a fixed 3/8" thick slat. They will be made with mortise and tenon joinery and be assembled with epoxy in the joints, sanded and ready for you to paint.

I am quoting for both shutters ready for you to paint and the shutters finished in our workshop

Timing

It will take approximately eight weeks to complete the shutters.

Figure 7



Figure 8





Example of shutters

fig 9