



**Architectural Review Board Application  
Full Board Review**

Application Date: 8/29/2021

**Project Address:** 205 Cevallos Street, Pensacola, FL 32502

**Applicant:** Aislinn Rehwinkel

**Applicant's Address:** 205 Cevallos Street, Pensacola, FL 32502

**Email:** aislinnrehwinkel@gmail.com **Phone:** 850-776-2464

**Property Owner:** Aislinn & Andrew Rehwinkel

(If different from Applicant)

**District:** ☒ **PHD** ☐ **NHPD** ☐ **OEHPD** ☐ **PHBD** ☐ **GCD**

Application is hereby made for the project as described herein:

- ☒ Residential Homestead – \$50.00 hearing fee  
☐ Commercial/Other Residential – \$250.00 hearing fee

*\* An application shall be scheduled to be heard once all required materials have been submitted and it is deemed complete by the Secretary to the Board. You will need to include ten (10) copies of the required information. Please see pages 3 – 4 of this application for further instruction and information.*

**Project specifics/description:**

**(See attached letter and renderings for more details):**

**1. Replace all existing windows with top-quality windows featuring impact glass. Using Andersen A-series to maintain historic look and quality. Existing windows are either inexpensive and non-functioning originals (from 1997), or low-quality vinyl replacements.**

**2. Replace all existing exterior doors with top-quality French doors OR floor-to-ceiling windows (windows will look the same as the French doors from the street, minus a handle). Using Andersen A-series to maintain historic look and quality. Existing doors are low-quality originals and do not secure properly.**

**3. On driveway-facing back of the house, remove unused exterior staircase and repair (so back of the house will look the same as it does now, but without the staircase).**

*I, the undersigned applicant, understand that payment of these fees does not entitle me to approval and that no refund of these fees will be made. I have reviewed the applicable zoning requirements and understand that I must be present on the date of the Architectural Review Board meeting.*

  
Applicant Signature

8/29/2021

Date

---

**Aislinn Rehwinkel**

205 Cevallos Street  
Pensacola, FL 32502  
850.776.2464  
aislinn@aislinnkate.com

28th August 2021

**Architectural Review Board**

City of Pensacola - Planning Services  
222 W. Main Street  
Pensacola, FL 32502  
850.435.1670

To Whom it May Concern,

Thank you for considering our request. I wanted to provide a bit more detail about our proposed project:

First, our home is not an historic home (built in 1997), but it is in the historic district and was built to match the style of the street. In prior renovations and improvements, we have tried very hard to enhance the historic feel of the home, we believe our proposed changes will be to the benefit of our home and the neighborhood.

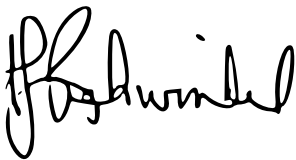
REPLACE ALL EXISTING WINDOWS. Half of the windows are single-pane glass and were original to the 1997 build, and half are vinyl windows that were replaced sometime before we purchased the home in 2013. Some of these no longer open/close properly, and all are terribly energy-inefficient. We will replace all existing windows with Anderson A-Series woodclad windows. The grid pattern will be four lights, which matches the grid pattern on the truly historic homes on our block. Color will stay the same (white).

REPLACE/CONVERT ALL EXISTING DOORS. Our home sits on a corner, and the two street-facing sides of the building are lined with French doors (14 sets in total along the front of the house). These doors are cheap and falling apart. They do not close properly, regularly blow open and leak water at an alarming rate during large storms, and again are terribly energy inefficient. We would like to replace them with top-quality Anderson French doors (see attached specs), with a grid pattern matching our windows and the truly historic homes on our block (six light). Additionally, for security reasons, we would like to convert some of the existing French doors into floor-to-ceiling windows. These new windows will use the exact same opening size as the doors they are replacing, and will have the same grid pattern as the French doors. In short, they will LOOK like French doors (minus the handle) from the street. It is important to us that we maintain the architectural integrity of our home, while making it safer and more secure for our family. We believe the installing of top-quality floor-to-ceiling windows will accomplish this goal.

---

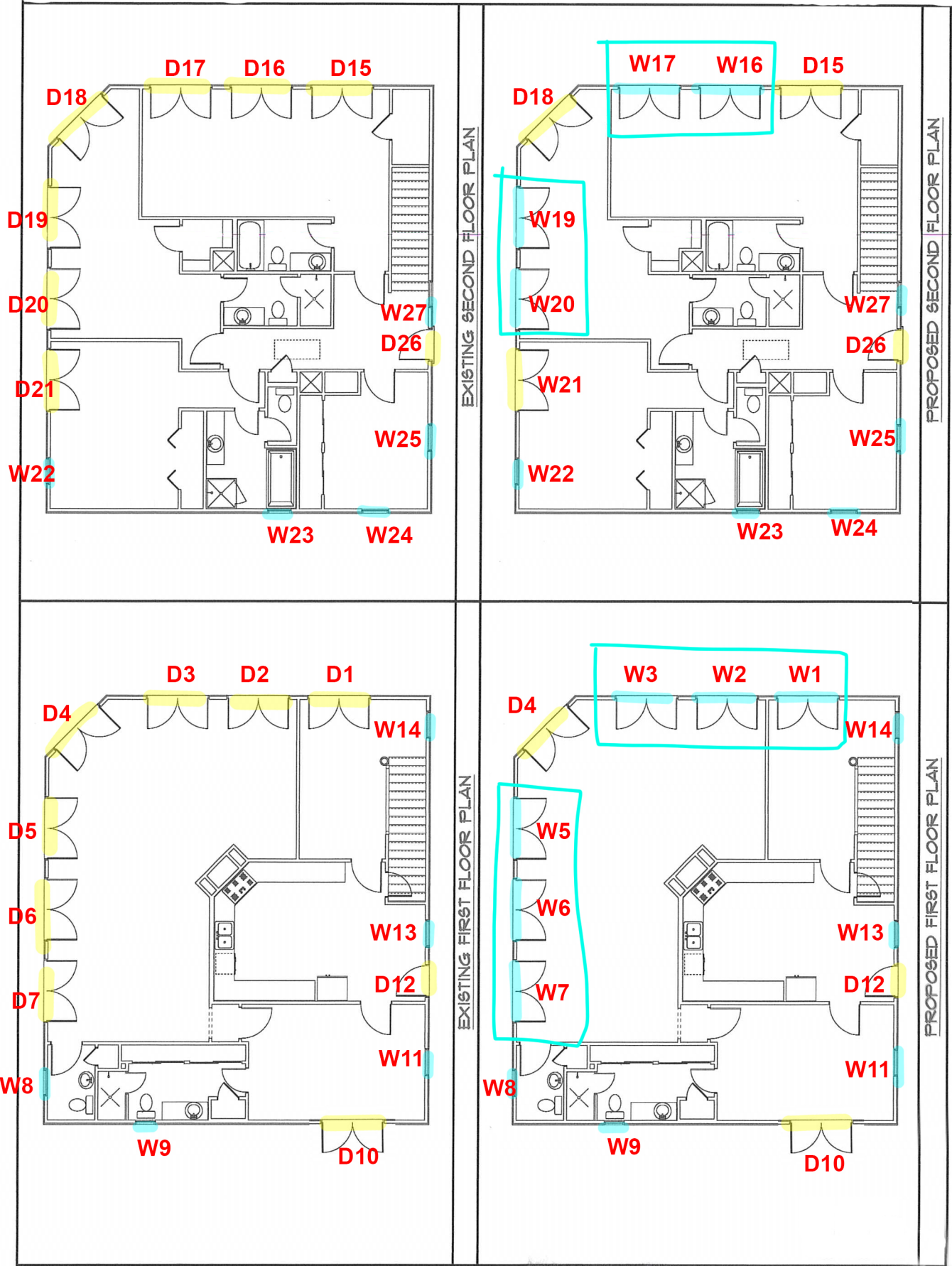
REMOVE EXTERIOR STAIRCASE. In 1997, our home was originally built to be a bed and breakfast. For this reason, the original owner/builder installed an exterior wooden staircase on the back of our house, on the side that faces our driveway (not visible from the street). For security reasons, we would like to remove this unused staircase and thus limit the number of entry points to our home. When the staircase is removed, we will repair the upper porch, and enclose the area on our lower back porch that is currently occupied by the staircase. The newly-enclosed/repared area will be sided and painted to match the existing house. This change will be barely noticeable once completed, and will provide much-needed exterior storage for our family.

We love living in and supporting downtown Pensacola, and look forward to improving the security and life of our home with these renovations. If you have any additional questions, please let me know. Thank you very much for your consideration.

A handwritten signature in black ink, appearing to read 'Aislinn Rehwinkel'.

**Aislinn Rehwinkel**

BLUE denotes windows (existing on the left, existing + converted on the right)  
YELLOW denotes French doors (existing on the left, existing + converted on the right)





# Photos of all Doors and Windows to be Replaced:











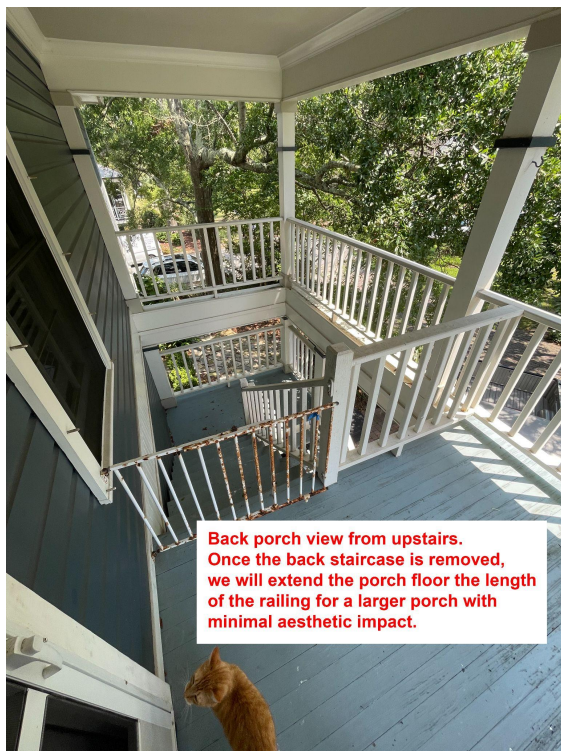
**Cevallos Street view (facing west).  
Other than small change to the grid pattern,  
the house will look the same from the street.**



**Street view facing south (from Intendencia St)  
(other than a change in grid pattern, house will  
look the same).**

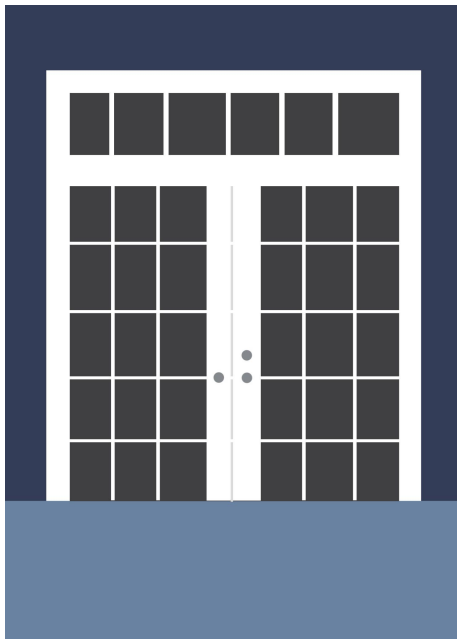




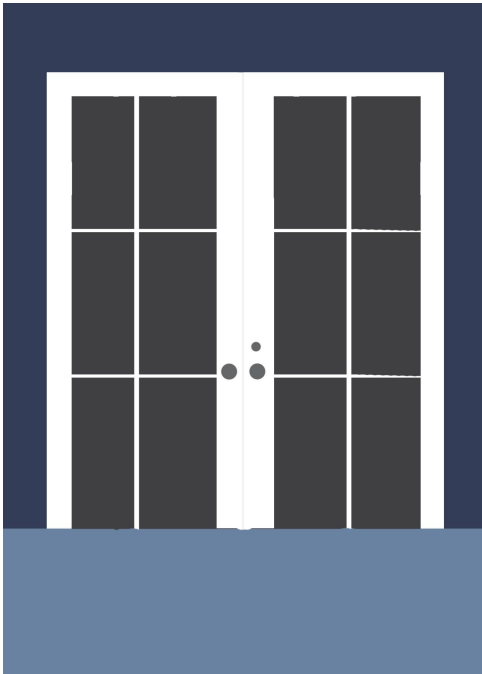


# Rendering of proposed replacements and door-to-window conversions

EXISTING DOWNSTAIRS FRENCH DOORS (8 SETS):



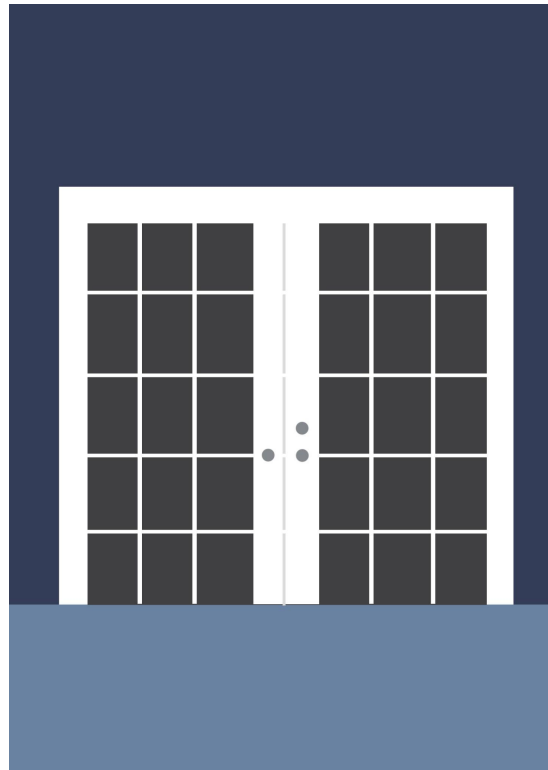
NEW DOWNSTAIRS DOORS  
(same size opening, new grid pattern)



DOOR-TO-WINDOW CONVERSION  
(same size opening, new grid pattern, windows)



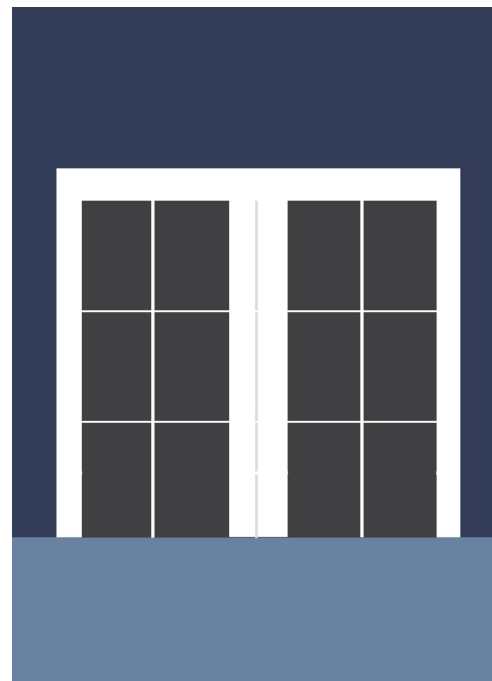
EXISTING UPSTAIRS FRENCH DOORS (7 SETS):



NEW UPSTAIRS DOORS  
(same size opening, new grid pattern)



DOOR-TO-WINDOW CONVERSION  
(same size opening, new grid pattern, windows)





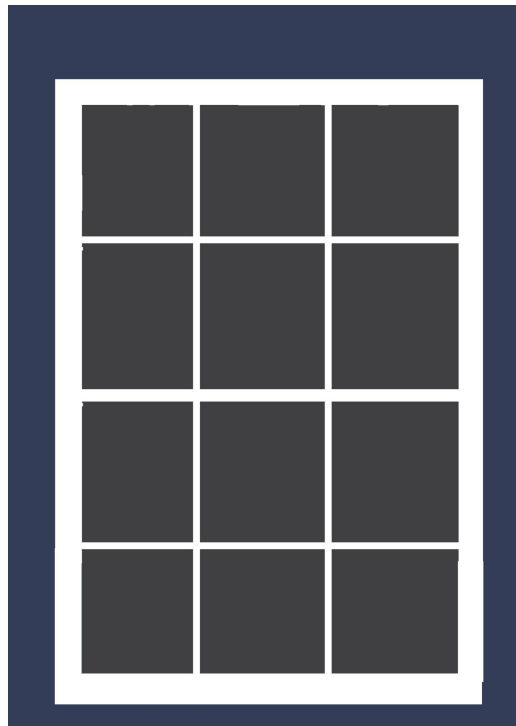
EXISTING SINGLE BACK DOORS (2 DOORS):



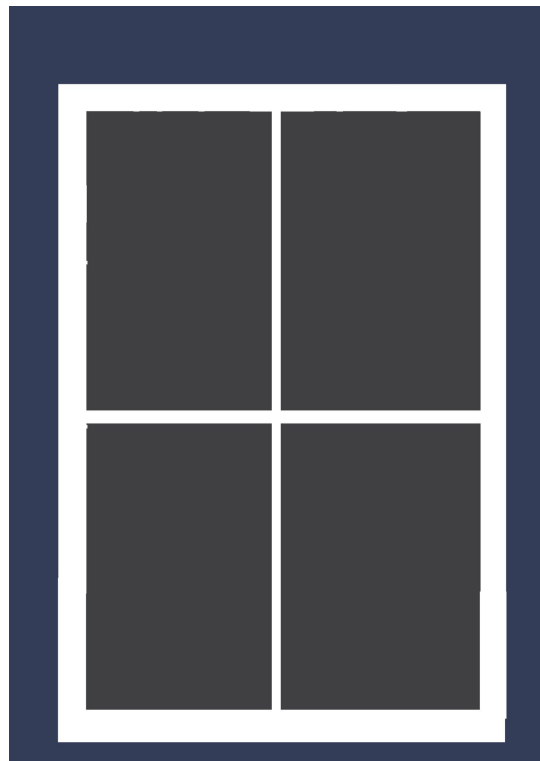
NEW SINGLE BACK DOORS



EXISTING DOUBLE-HUNG WINDOWS (10 windows):



NEW DOUBLE-HUNG WINDOW:  
(same size opening, different grid pattern)



# TILT-WASH DOUBLE-HUNG FULL-FRAME WINDOWS

## FEATURES

### FRAME

**A** Exterior outer frame members are covered with a Perma-Shield® rigid vinyl cladding, minimizing maintenance and providing an attractive appearance.

**B** For exceptional long-lasting\* performance, sill members are constructed with a wood core and a Fibrex® material exterior. Sill ends are protected and sealed with weather-resistant covers.

**C** Natural wood stops are available in pine, and prefinished white, dark bronze and black.\*\*

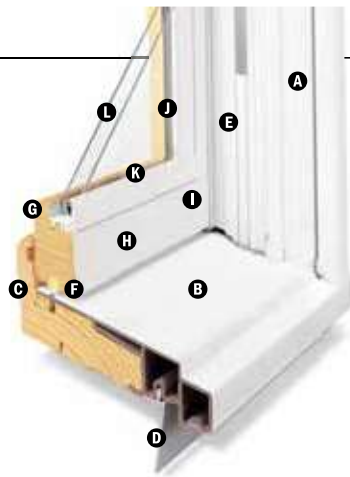
**D** A factory-applied rigid vinyl anchoring flange on the head, sill and sides of the outer frame helps secure the unit to the structure.

**E** An extruded rigid vinyl jamb liner and fin provide a protective seal against the outer frame members. Exclusive slide wash assists make it easy to tilt the sash into wash mode position.



Unique block-and-tackle balancers feature sized-to-the-unit, rust-resistant springs that require no adjustment. Glass-reinforced nylon balancer shoes provide smooth, reliable sash operation. Sash can be removed, without tools, for drywall pass-through. Jamb liners are available in white or gray, and must be specified when ordering. Contact your Andersen supplier for details.

**F** Weatherstrip throughout the unit provides a long-lasting, energy-efficient, weather-resistant seal. For the top and bottom rails, an encased foam material is used. The head jamb liner and sill have a rigid vinyl rib that the weatherstrip material compresses against. At the meeting rail, compressible vinyl bulb material is used. Side jamb liners use leaf-type weatherstrip with foam inserts.



### SASH

Wash assists make it easy to tilt the sash into wash mode.

**G** Wood sash members are treated with a water-repellent preservative for long-lasting protection and performance. Interior surfaces are unfinished pine. Low-maintenance prefinished white interiors are also available.

**H** A polyester-stabilized coat with a Flexacron® finish is electrostatically applied to penetrate all exterior surfaces for maximum protection and a lustrous finish.

**I** Sash joints simulate the look of traditional mortise-and-tenon construction inside and out.

### GLASS

**J** In addition to stainless steel glass spacers, black or white glass spacers are now available to allow the spacer to blend in with the unit color.

**K** Silicone bed glazing provides superior weathertightness and durability.

**L** High-Performance options include:

- Low-E4® glass
- Low-E4 HeatLock® glass
- Low-E4 SmartSun™ glass
- Low-E4 SmartSun HeatLock glass
- Low-E4 Sun glass

Tempered and other glass options are available. Contact your Andersen supplier.

A removable translucent film helps shield the glass from damage during delivery and construction, and simplifies finishing at the job site.

### Patterned Glass

Patterned glass options are available. See page 12 for more details.

## EXTERIOR & INTERIOR OPTIONS

### EXTERIOR COLORS



### INTERIOR OPTIONS



## HARDWARE



Standard Lock & Keeper

Black | Gold Dust | **Stone** | White

Stone is standard with natural interior units. White comes with prefinished white interiors. Other finishes optional.

## OPTIONAL HARDWARE Sold Separately



Lock & Keeper

Optional Estate lock and keeper reduces the clear opening height by 1/16" (14). Check with local building code officials to determine compliance with egress requirements.

### CONTEMPORARY



Bar Lift

Antique Brass | Black | Bright Brass  
Brushed Chrome | Distressed Bronze  
**Distressed Nickel** | Gold Dust  
Oil Rubbed Bronze | Polished Chrome  
Satin Nickel | Stone | White

### TRADITIONAL



Bar Lift



Hand Lift

Finger Lifts

Antique Brass | Black | Bright Brass | Brushed Chrome  
Distressed Bronze | Distressed Nickel | Gold Dust | **Oil Rubbed Bronze**  
Polished Chrome | Satin Nickel | Stone | White

Bold name denotes finish shown.

### HARDWARE FINISHES



\*Visit andersenwindows.com/warranty for details.

\*\*Products with dark bronze and black interiors have matching exteriors.

\*Flexacron® is a registered trademark of PPG Industries, Inc.

Dimensions in parentheses are in millimeters.

Printing limitations prevent exact replication of colors and finishes. See your Andersen supplier for actual color and finish samples.

Naturally occurring variations in grain, color and texture of wood make each window one of a kind. All wood interiors are unfinished unless a finish is specified.

Distressed bronze and oil rubbed bronze are "living" finishes that will change with time and use.

## StormWATCH® PROTECTION

400 Series tilt-wash double-hung full-frame windows are available with Stormwatch® Protection. Visit [andersenwindows.com/coastal](http://andersenwindows.com/coastal) for more details.

### Performance Grade (PG) Upgrades

A high inside sill stop\* with exterior sill brackets and hidden interior brackets is available to provide additional structural support for tilt-wash windows, allowing standard, non-impact glass units to achieve higher performance grade ratings. Performance Grade (PG) ratings are more comprehensive than Design Pressure (DP) ratings for measuring product performance. For up-to-date performance information of individual products, please visit [andersenwindows.com](http://andersenwindows.com). Use of this option will subtract 5/8" (15) from the clear opening height. PG Upgrade not available for 72" (1829) and 76" (1930) heights. Contact your Andersen supplier for availability.

### SASH OPTIONS



Cottage

Reverse Cottage

## ACCESSORIES Sold Separately

### FRAME

#### Extension Jambs



Standard jamb depth is 4 1/2" (114). Extension jambs are available in unfinished pine or prefinished white. Some sizes may be veneered.

Factory-applied and non-applied interior extension jambs are available in 1/16" (1.5) increments between 5 1/4" (133) and 7 1/8" (181). Extension jambs can be factory applied to either three sides (stool and apron application) or four sides (picture frame casing).

#### Pine Stool



A clear pine stool is available and ready for finishing. The tilt-wash stool is available in 4 9/16" (116) for use in wall depths up to 5 1/4" (133), and 6 9/16" (167) for use in wall depths up to 7 1/8" (181). Works with 2 1/4" (57) and 2 1/2" (64) casing widths.

### HARDWARE

#### Window Opening Control Device



A recessed window opening control device is available factory applied. It limits the sash travel to less than 4" (102) when the window is first opened. Available in white, stone and black. A field-applied window opening control device kit is also available.

### STORM/INSECT SCREEN COMBINATION UNIT\*\*



A self-storing storm window combined with an insect screen provides greater energy efficiency, while allowing ventilation when needed.

Constructed with an aluminum frame, single-pane upper and lower glass panels, and charcoal powder-coated aluminum screen mesh. Available in white, Sandtone and Terratone to match product exteriors. Canvas, dark bronze, forest green and black are available by special order.

Combination units can improve Sound Transmission Class (STC) and Outdoor Indoor Transmission Class (OITC) ratings. Ideal for projects near airports, busy roadways or other noisy environments. For example, adding a combination unit to a 400 Series tilt-wash double-hung (3862) unit with Low-E4® glass will improve its STC rating from 26 to 32. Contact your Andersen supplier for additional STC and OITC rating information.

### GLASS

#### Andersen® Art Glass

Available for 400 Series tilt-wash transom and picture units. Andersen art glass panels come in a variety of original patterns. See art glass section starting on page 173 for more information or visit [andersenwindows.com/artglass](http://andersenwindows.com/artglass).

### INSECT SCREENS

#### Insect Screen Frames



Full and half insect screens are available for most unit sizes. Frame colors match product exteriors. Half insect screen (shown above) allows ventilation without affecting the view through the upper sash. Not available on windows with Stormwatch Protection.

#### TruScene® Insect Screens

Andersen TruScene insect screens let in over 25% more fresh air† and provide 50% greater clarity than conventional Andersen insect screens, all while keeping out unwanted small insects.

#### Conventional Insect Screens

Conventional insect screens have charcoal powder-coated aluminum screen mesh.

### GRILLES

Grilles are available in a variety of configurations and widths. For double-hung grille patterns, see page 85.

### EXTERIOR TRIM

Available with Andersen exterior trim. See exterior trim section starting on page 175.

#### CAUTION:

- Painting and staining may cause damage to rigid vinyl.
- 400 Series windows in Terratone color may be painted any color lighter than Terratone color using quality oil-based or latex paint.
- Do not paint 400 Series windows in white, canvas, Sandtone, dark bronze, forest green or black exterior colors.
- Andersen does not warrant the adhesion or performance of homeowner-applied paint over vinyl or other factory-coated surfaces.
- For vinyl painting instructions and preparation, contact your Andersen supplier.
- Do not paint weatherstrip.
- Creosote-based stains should not come in contact with Andersen products.
- Abrasive cleaners or solutions containing corrosive solvents should not be used on Andersen products.

\*Infringes on the overall net clear opening. Unit clear operable area may not meet egress requirements. See your local building code official for more information.

\*\*Do not add combination units to windows with Low-E4 Sun glass unless window glass is tempered. Combination units may also reduce the overall clear operable area of the window. See your local code official for egress requirements in your area.

†TruScene insect screens let in over 25% more fresh air than standard Andersen fiberglass insect screens.

Dimensions in parentheses are in millimeters.

# TILT-WASH DOUBLE-HUNG FULL-FRAME WINDOWS

**Table of Tilt-Wash Double-Hung Window Sizes**

Scale 1/8" (3) = 1'-0" (305) – 1:96

Window Dimension	1'-9 5/8"	2'-1 5/8"	2'-5 5/8"	2'-7 5/8"	2'-9 5/8"	2'-11 5/8"	3'-1 5/8"	3'-5 5/8"	3'-9 5/8"
Minimum Rough Opening	1'-10 1/8" (562)	2'-2 1/8" (664)	2'-6 1/8" (765)	2'-8 1/8" (816)	2'-10 1/8" (867)	3'-0 1/8" (917)	3'-2 1/8" (968)	3'-6 1/8" (1070)	3'-10 1/8" (1172)
Unobstructed Glass (lower sash only)	15" (381)	19" (483)	23" (584)	25" (635)	27" (686)	29" (737)	31" (787)	35" (889)	39" (991)
CUSTOM WIDTHS – 21 5/8" to 45 5/8"									
CUSTOM HEIGHTS – 36 7/8" to 92 7/8"									
	3'-0 7/8" (937)	3'-0 7/8" (937)	3'-0 7/8" (937)	3'-0 7/8" (937)	3'-0 7/8" (937)	3'-0 7/8" (937)	3'-0 7/8" (937)	3'-0 7/8" (937)	3'-0 7/8" (937)
	TW18210	TW20210	TW24210	TW26210	TW28210	TW210210	TW30210	TW34210	TW38210
	TW1832	TW2032	TW2432	TW2632	TW2832	TW21032	TW3032	TW3432	TW3832
	TW1836	TW2036	TW2436	TW2636	TW2836	TW21036	TW3036	TW3436	TW3836
	TW18310	TW20310	TW24310	TW26310	TW28310	TW210310	TW30310	TW34310	TW38310
	TW1842	TW2042	TW2442	TW2642	TW2842	TW21042	TW3042	TW3442	TW3842
	TW1846	TW2046	TW2446	TW2646	TW2846	TW21046	TW3046 <sup>0</sup>	TW3446 <sup>0</sup>	TW3846 <sup>0</sup>
	TW18410	TW20410	TW24410	TW26410	TW28410	TW210410 <sup>0</sup>	TW30410 <sup>0</sup>	TW34410 <sup>0</sup>	TW38410 <sup>0</sup>
	TW1852	TW2052	TW2452	TW2652	TW2852 <sup>0</sup>	TW21052 <sup>0</sup>	TW3052 <sup>0</sup>	TW3452 <sup>0</sup>	TW3852 <sup>0</sup>
	TW1856	TW2056	TW2456	TW2656 <sup>0</sup>	TW2856 <sup>0</sup>	TW21056 <sup>0</sup>	TW3056 <sup>0</sup>	TW3456 <sup>0</sup>	TW3856 <sup>0</sup>
	TW18510	TW20510	TW24510 <sup>0</sup>	TW26510 <sup>0</sup>	TW28510 <sup>0</sup>	TW210510 <sup>0</sup>	TW30510 <sup>0</sup>	TW34510 <sup>0</sup>	TW38510 <sup>0</sup>
	TW1862	TW2062	TW2462 <sup>0</sup>	TW2662 <sup>0</sup>	TW2862 <sup>0</sup>	TW21062 <sup>0</sup>	TW3062 <sup>0</sup>	TW3462 <sup>0</sup>	TW3862 <sup>0</sup>



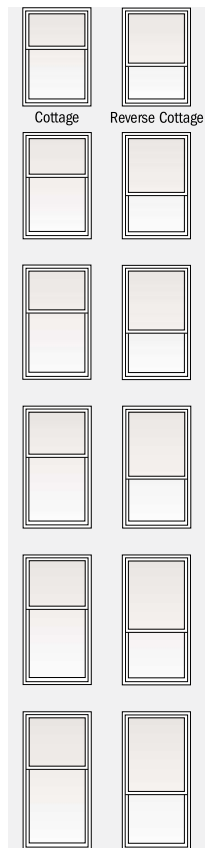
Custom-size windows are available in 1/8" (3) increments. See page 84 for custom sizing.

Grille patterns shown on page 85.

Cottage or reverse cottage sash ratio available for heights shown below in all widths.

**CUSTOM WIDTHS – 21 5/8" to 45 5/8"**

**CUSTOM HEIGHTS – 48 7/8" to 76 7/8"**



Size tables for windows with cottage or reverse cottage sash are available at [andersenwindows.com/sizing](http://andersenwindows.com/sizing).

- "Window Dimension" always refers to outside frame-to-frame dimension.
- "Minimum Rough Opening" dimensions may need to be increased to allow for use of building wraps, flashing, sill panning, brackets, fasteners or other items. See pages 210-211 for more details.
- Dimensions in parentheses are in millimeters.
- Meet or exceed clear opening area of 5.7 sq. ft. or 0.53 m<sup>2</sup>, clear opening width of 20" (508) and clear opening height of 24" (610). See tables on pages 82-83.

continued on next page

# SPECIALTY WINDOWS

## FEATURES

### FRAME

**A** Wood frame members are treated with a water-repellent preservative for long-lasting\* protection and performance. Radii are made of laminated pine, offering improved strength and appearance.

**B** The lineal sections of the jamb and sill on eyebrow, extended gothic, octagon, monumental, Flexiframe®, custom arch and arch windows are covered with a low-maintenance, fiberglass-reinforced composite. The arched head members and Springline™ units are covered with stretch-formed aluminum.

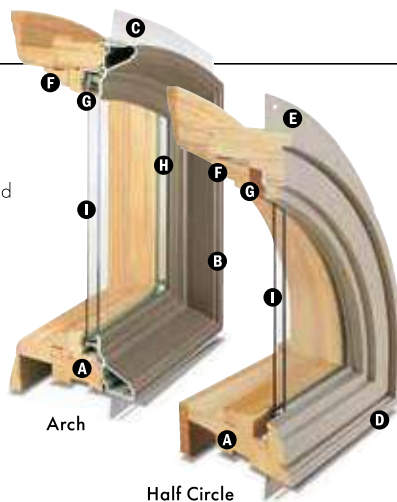
**C** The vinyl installation flange on eyebrow, extended gothic, octagon, monumental, Flexiframe, custom arch, arch and Springline units extends 1 1/4" (32) around the entire perimeter of the unit. It helps seal the unit to the structure.

**D** Circle, half circle, quarter circle, elliptical and oval windows are covered with a rigid vinyl cladding. Low-maintenance exterior cladding provides long-lasting\* beauty.

**E** Rigid vinyl cladding on circle, half circle, quarter circle, elliptical and oval window frames forms a full-perimeter installation flange for securing the unit to the structure. It also helps maintain an attractive appearance while minimizing maintenance.

**F** Inside trim stop is made of unfinished pine. Arched trim stops are made with quality, full-length laminated pine. Units are shipped with the trim stops tacked on, so removal is easy – expediting finishing and joining procedures.

**G** Unfinished interior wood glazing stops help secure the glass in place. Arched glazing stops are made with full-length laminated pine.

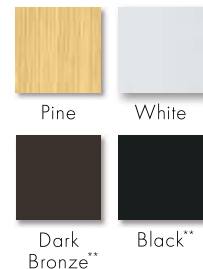


## EXTERIOR & INTERIOR OPTIONS

### EXTERIOR COLORS



### INTERIOR OPTIONS



### GLASS

**H** In addition to stainless steel glass spacers, black or white glass spacers are now available to allow the spacer to blend in with the unit color.

**I** High-Performance options include:

- Low-E4® glass
- Low-E4 HeatLock® glass
- Low-E4 SmartSun™ glass
- Low-E4 SmartSun HeatLock glass
- Low-E4 Sun glass

Tempered and other glass options are available. Contact your Andersen supplier.

A removable translucent film helps shield the glass from damage during delivery and construction, and simplifies finishing at the job site.

### Patterned Glass

Patterned glass options are available. See page 12 for more details.

**StormWATCH®**  
PROTECTION

Specialty windows are available with Stormwatch® Protection. Visit [andersenwindows.com/coastal](http://andersenwindows.com/coastal) for more details.



Circle/Oval



Springline™



Flexiframe®

\*Visit [andersenwindows.com/warranty](http://andersenwindows.com/warranty) for details.

\*\*Products with dark bronze and black interiors have matching exteriors.

Dimensions in parentheses are in millimeters.

Printing limitations prevent exact replication of colors. See your Andersen supplier for actual color samples.

Naturally occurring variations in grain, color and texture of wood make each window one of a kind. All wood interiors are unfinished unless a finish is specified.

## FEATURES

### FRENCHWOOD® HINGED INSWING PATIO DOORS

#### FRAME

**A** Frame constructed with a wood core and a fiberglass exterior. This construction produces a rigid frame and a low-maintenance, durable exterior.

**B** Wood members are treated with a water-repellent preservative for long-lasting\* protection and performance.

The interior wood jamb has an extension jamb kerf, making it easy to add interior extension jambs to match wall depth.

Frenchwood hinged inswing patio doors are available in 4 $\frac{9}{16}$ " (116) and 6 $\frac{9}{16}$ " (167) base jamb depths.

#### SILL

**C** One-piece fiberglass design provides superior water management. The nonconductive fiberglass construction enhances energy performance, and its superior strength eliminates the need for a sill support.

Slip- and wear-resistant poly bead finish available in either neutral gray or dark bronze color.

**D** A factory-applied drop-nose channel attachment is available for enhanced water performance. See "Common Features" for details.



#### E GLASS

See "Common Features" for details.

#### PANEL

**F** Panel stiles and rails are constructed of an engineered LVL core. This LVL core provides strength and helps prevent warping for consistent smooth operation.

**G** Interior panel surfaces are constructed from premium wood veneer available in pine, maple, oak, cherry, mahogany\*\* and vertical grain Douglas fir. All prefinished interior options use water-based paints and stains.

**H** The exterior of the wood panel is protected with a Flexacron® paint system; this stabilized polyester paint is electrostatically applied to penetrate all exterior surfaces for maximum protection and a lustrous, low-maintenance finish.

**I** Factory-applied, one-piece (welded corners), compression-type weatherstrip made from a durable thermoplastic material is attached directly to the panel, not the frame, creating a continuous seal around the panel to provide maximum effectiveness against air and water infiltration. This system provides a long-lasting, energy-efficient barrier against wind, water and dust.

Two-panel doors are available with one or two active panels. For doors with one active panel, hinges can be located along either the jamb or astragal.

#### Adjustable Hinges

Adjustable hinges have ball-bearing pivots for smooth, frictionless movement and feature easy horizontal and vertical adjustments, plus a quick-release feature for easy panel removal. Gold dust finish is standard on wood interior doors. For units with a prefinished white interior, white finish hinges are standard. Available in finishes that coordinate with most trim set hardware finishes.



#### Removable Panels

Panels can be easily removed with the unique panel-release tab on the hinge. Release tabs are covered with a cap for a clean appearance. This release feature is ideal for transporting large units up stairs or to other hard-to-reach areas.

#### HARDWARE

##### Multi-Point Locking System



Frenchwood hinged patio doors have a multi-point locking system that combines hook bolts with a center deadbolt. This system provides added weathertightness and enhanced security.

##### Optional Corrosion-Resistant Hardware

Optional corrosion-resistant locking mechanism is available and recommended for applications within two miles of the coast and other harsh environments.

## COMMON FEATURES

#### GLASS

**I** Impact-resistant glass construction provides industry-leading energy performance, sound control and added security.

Panels are silicone bed glazed and finished with an interior wood glass stop.

**J** Interior wood glass stops are secured using 1 $\frac{1}{2}$ " (38) 16-gauge crown staples instead of nails. Silicone is also applied to the full perimeter of the glass on the interior side of the pane to add strength and stability.

A removable translucent film helps shield the glass from damage during delivery and construction and also simplifies finishing at the jobsite.

Obscure glass options are available, contact your Andersen supplier.

Consult local building codes for the glass most suitable to your area. High-performance options include:

- Low-E4® Impact-Resistant tempered glass
- Low-E4 HeatLock® Impact-Resistant tempered glass
- Low-E4 Sun Impact-Resistant tempered glass
- Low-E4 SmartSun™ Impact-Resistant tempered glass
- Low-E4 SmartSun HeatLock Impact-Resistant tempered glass

Standard Low-E4, Low-E4 HeatLock, Low-E4 Sun and Low-E4 SmartSun glass options are available for doors with PG upgrades.

Monolithic laminated options include:

- Clear Monolithic SmartSun Impact-Resistant tempered glass
- Gray Monolithic SmartSun Impact-Resistant tempered glass

#### SILL

##### Performance Grade (PG) Upgrade Optional Drop-Nose Channel



**K** A factory-applied, patented drop-nose channel is available when higher product performance is required. Drop-nose channel provides enhanced water performance without increasing interior sill height. Shown on a Frenchwood hinged inswing patio door. Details shown on page 113 for gliding patio doors and page 120 for hinged inswing patio doors.

#### Drop-Nose Sill Cover



Drop-nose sill cover is designed to cover the sill gap between two joined units. Available in all sill colors.

#### TALLER HEIGHTS

A-Series Frenchwood patio doors and patio door sidelights are available in heights up to 9'-11 $\frac{1}{2}$ " (3023).

\*Visit [andersenwindows.com/warranty](http://andersenwindows.com/warranty) for details.

\*\*Actual wood species is either Sapele or Sipo, both non-endangered species grown in Africa, with color and characteristics similar to Central American mahoganies.

®Flexacron® is a registered trademark of PPG Industries, Inc.

Dimensions in parentheses are in millimeters.



## FEATURES

### FRENCHWOOD HINGED OUTSWING PATIO DOORS

#### FRAME

**A** Frame constructed with a wood core and a fiberglass exterior. This construction produces a rigid frame and a low-maintenance, durable exterior.

**B** Wood members are treated with a water-repellent preservative for long-lasting\* protection and performance.

The interior wood jamb has an extension jamb kerf, making it easy to add interior extension jambs to match wall depth.

#### SILL

**C** One-piece, non-conductive fiberglass construction enhances energy performance, and its superior strength eliminates the need for a sill support. An innovative sill design provides superior water management.

Slip- and wear-resistant poly bead finish available in either neutral gray or dark bronze color.

**D** A factory-applied drop-nose channel attachment is available for enhanced water performance. See "Common Features" for details.

#### E GLASS

See "Common Features" for details.



#### PANEL

**F** Panel stiles and rails are constructed of an engineered LVL core. This LVL core provides strength and helps prevent warping for consistent smooth operation.

**G** Interior panel surfaces are constructed from premium wood veneer available in pine, maple, oak, cherry, mahogany\*\* and vertical grain Douglas fir. All prefinished interior options use water-based paints and stains.

**H** The exterior of the wood panel is protected with a Flexacron® paint system; this stabilized polyester paint is electrostatically applied to penetrate all exterior surfaces for maximum protection and a lustrous, low-maintenance finish.

**I** Factory-applied, one-piece (welded corners), compression-type weatherstrip made from a durable thermoplastic material is attached directly to the panel, not the frame, creating a continuous seal around the panel to provide maximum effectiveness against air and water infiltration. This system provides a long-lasting, energy-efficient barrier against wind, water and dust.

Hinged outswing operating panels are available in either single left- or right-hand active or two-panel active-passive or passive-active jamb-hinged.

#### Adjustable Hinges

**J** The ball-bearing hinges are covered with a corrosion-resistant powder-coat finish. Adjustable hinges have ball-bearing pivots for smooth, frictionless movement and feature easy horizontal and vertical adjustments, plus a quick-release feature for easy panel removal. Hinges are color-matched to the exterior.

#### Removable Panels



Panels can be easily removed with the unique panel-release tab on the hinge. Release tabs are covered with a cap for a clean appearance. This release feature is ideal for transporting large units up stairs or to other hard-to-reach areas.

#### HARDWARE

##### Multi-Point Locking System



Frenchwood hinged patio doors have a multi-point locking system that combines hook bolts with a center deadbolt. This system provides added weathertightness and enhanced security.

##### Optional Corrosion-Resistant Hardware

Optional corrosion-resistant locking mechanism and hinges are available and recommended for applications within two miles of the coast and other harsh environments\*.



Lighthouse indicates differences from standard unit or optional upgrades.

\*Visit [andersenwindows.com/warranty](http://andersenwindows.com/warranty) for details.

\*\*Actual wood species is either Sapele or Sipo, both non-endangered species grown in Africa, with color and characteristics similar to Central American mahoganies.

†Flexacron® is a registered trademark of PPG Industries, Inc.

## FEATURES

### FRENCHWOOD® PATIO DOOR SIDELIGHTS

#### FRAME

Frame constructed with a wood core and a fiberglass exterior. This construction produces a rigid frame and a low-maintenance, durable exterior.


Wood members are treated with a water-repellent preservative for long-lasting protection and performance.

The interior wood jamb has an extension jamb kerf, making it easy to add interior extension jambs to match wall depth.

#### SILL

One-piece fiberglass design provides superior water management. The nonconductive fiberglass construction enhances energy performance, and its superior strength eliminates the need for a sill support.

Slip- and wear-resistant poly bead finish available in either neutral gray or dark bronze color.

 Factory-applied drop-nose channel attachment is available for enhanced water performance. See "Common Features" for details.

#### GLASS

See "Common Features" for details.



### FRENCHWOOD PATIO DOOR TRANSOMS

#### FRAME

Frame constructed with a wood core and a fiberglass exterior. This construction produces a rigid frame and a low-maintenance, durable exterior.

Wood members are treated with a water-repellent preservative for long-lasting protection and performance.

The interior wood jamb has an extension jamb kerf, making it easy to add interior extension jambs to match wall depth.

#### SASH

Available in direct-set or sash-set construction. Direct-set transoms have glass glazed directly into the frame and maximize glass area. Sash-set transoms feature a fixed sash and provide common sight lines with A-Series patio doors.


Frenchwood patio door transoms feature elegant lines that match the Frenchwood patio doors. Available in pine, maple, oak, cherry, mahogany\*\* and vertical grain Douglas fir. All prefinished interior options use water-based paints and stains.

#### GLASS


See "Common Features" for details.

## COMMON FEATURES

#### GLASS

 Impact-resistant glass construction provides industry-leading energy performance, sound control and added security.

Panels are silicone bed glazed and finished with an interior wood glass stop.

 Interior wood glass stops are secured using 1 1/2" (38) 16-gauge crown staples instead of nails. Silicone is also applied to the full perimeter of the glass on the interior side of the pane to add strength and stability.

A removable translucent film helps shield the glass from damage during delivery and construction and also simplifies finishing at the jobsite.

Obscure glass options are available, contact your Andersen supplier.

Consult local building codes for the glass most suitable to your area. High-performance options include:

- Low-E4® Impact-Resistant tempered glass
- Low-E4 HeatLock® Impact-Resistant tempered glass
- Low-E4 Sun Impact-Resistant tempered glass
- Low-E4 SmartSun™ Impact-Resistant tempered glass
- Low-E4 SmartSun HeatLock Impact-Resistant tempered glass

Standard Low-E4, Low-E4 HeatLock, Low-E4 Sun and Low-E4 SmartSun tempered glass options are available for doors with PG upgrades.


Monolithic laminated options include:

- Clear Monolithic SmartSun Impact-Resistant tempered glass
- Gray Monolithic SmartSun Impact-Resistant tempered glass

#### SILL

##### Performance Grade (PG) Upgrade Optional Drop-Nose Channel



 A factory-applied, patented drop-nose channel is available when higher product performance is required. Drop-nose channel provides enhanced water performance without increasing interior sill height. Shown on a Frenchwood hinged inswing patio door. Details shown on page 125.

#### Drop-Nose Sill Cover



Drop-nose sill cover is designed to cover the sill gap between two joined units. Available in all sill colors.

#### TALLER HEIGHTS

A-Series Frenchwood patio doors and patio door sidelights are available in heights up to 9'-11 1/2" (3023).

\*Visit [andersenwindows.com/warranty](http://andersenwindows.com/warranty) for details.

\*\*Actual wood species is either Sapele or Sipo, both non-endangered species grown in Africa, with color and characteristics similar to Central American mahoganies.

\*Flexacron® is a registered trademark of PPG Industries, Inc.

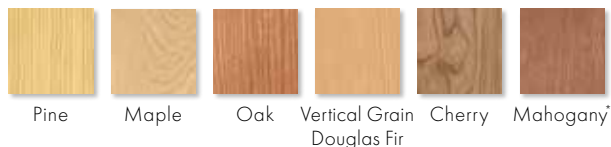
Dimensions in parentheses are in millimeters.

## EXTERIOR & INTERIOR

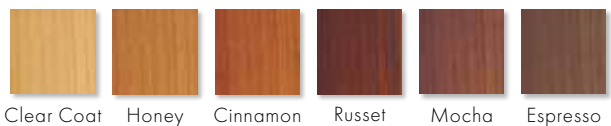
### EXTERIOR COLORS



### INTERIOR WOOD SPECIES

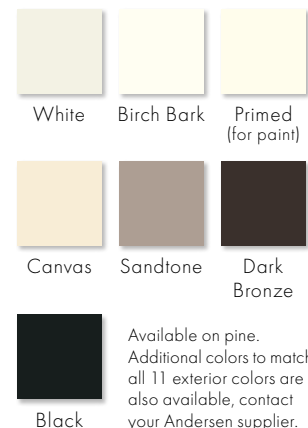


### FACTORY-FINISHED INTERIORS



Shown on pine. Available on pine, maple and oak only.  
Naturally occurring variations in grain, color and texture of wood make each window one of a kind. All wood interiors are unfinished unless a finish is specified.

### INTERIOR PAINTED OPTIONS



Available on pine.  
Additional colors to match all 11 exterior colors are also available, contact your Andersen supplier.

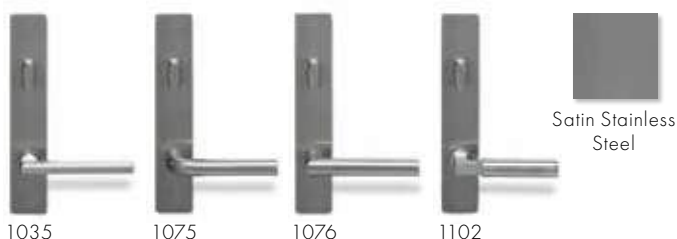
## HARDWARE Sold Separately\*\*



### HARDWARE FINISHES



### FSB® HINGED PATIO DOOR HARDWARE



\*Actual wood species is either Sapele or Sipo, both non-endangered species grown in Africa, with color and characteristics similar to Central American mahoganies.

\*\*Matching hinges available in most hardware finishes for inswing patio doors.

Mix and match interior and exterior style and finish options are available, excludes FSB hardware.

Bright brass and satin nickel finishes feature a 10-year limited warranty.

Tribeca and Albany hardware are zinc diecast with powder-coated durable finish, other hardware is solid forged brass.

Printing limitations prevent exact replication of colors and finishes.

See your Andersen supplier for actual color and finish samples.

"FSB" is a registered trademark of Franz Schneider Brakel GmbH & Co.