

FOR OFFICE USE ONLY

Meeting Date \_\_\_\_\_

Agenda No. \_\_\_\_\_

Approved by: \_\_\_\_\_

APPLICATION TO: ARCHITECTURAL REVIEW BOARD  
CITY OF PENSACOLA  
P.O. BOX 12910  
PENSACOLA, FL 32521-0053

DATE OF APPLICATION: \_\_\_\_\_ August 24, 2021 \_\_\_\_\_

ADDRESS OF PROJECT:  
\_\_\_\_\_ 40 S. Alcaniz Street Pensacola, FL 32502 \_\_\_\_\_

Application is hereby made for project as described herein:

The construction of a new pavilion in the existing courtyard at IHMC to enclose a pool and tub used for human performance research.

ATTACH REQUIRED ADDITIONAL INFORMATION

"The City of Pensacola adheres to the Americans with Disabilities Act and will make reasonable modifications for access to City services, programs, and activities. Please call 435-1600 for further information. Requests must be made at least 48 hours in advance of the event in order to allow the City time to provide the requested services."

NAME & MAILING ADDRESS OF PETITIONER:

\_\_\_\_\_ Carter Quina \_\_\_\_\_

\_\_\_\_\_ 400 West Romana Street \_\_\_\_\_

\_\_\_\_\_ Pensacola, FL 32502 \_\_\_\_\_



\_\_\_\_\_ SIGNATURE OF OWNER'S REP \_\_\_\_\_

\_\_\_\_\_ 850.433.5575 \_\_\_\_\_

TELEPHONE NUMBER

\_\_\_\_\_ August 24, 2021 \_\_\_\_\_

DATE

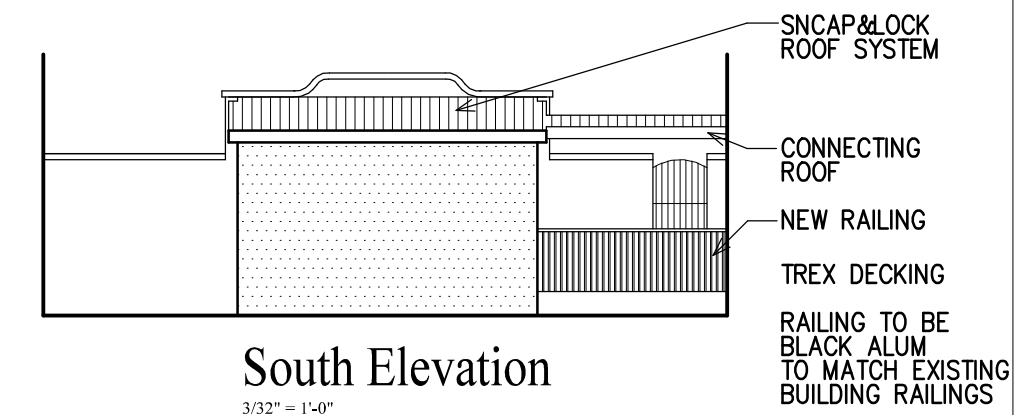
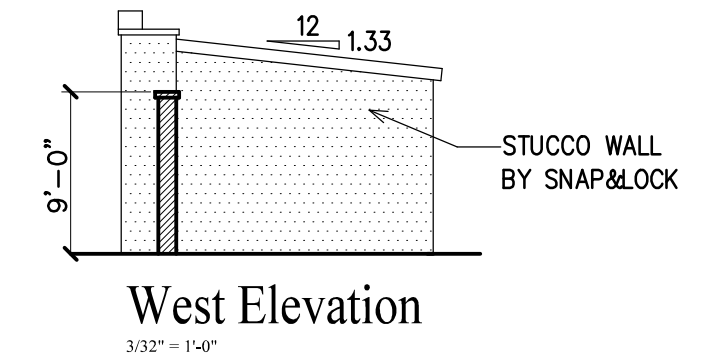
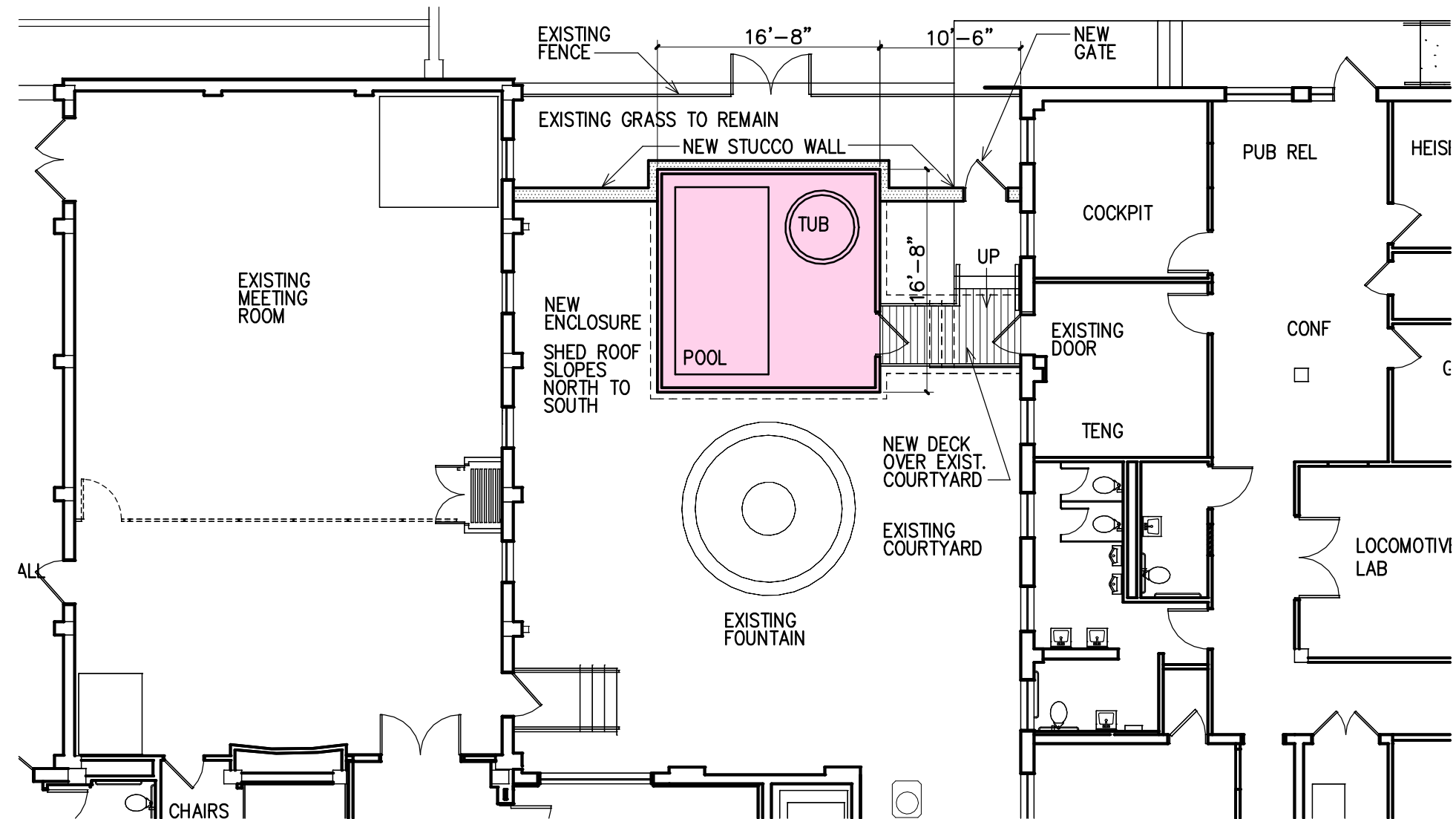
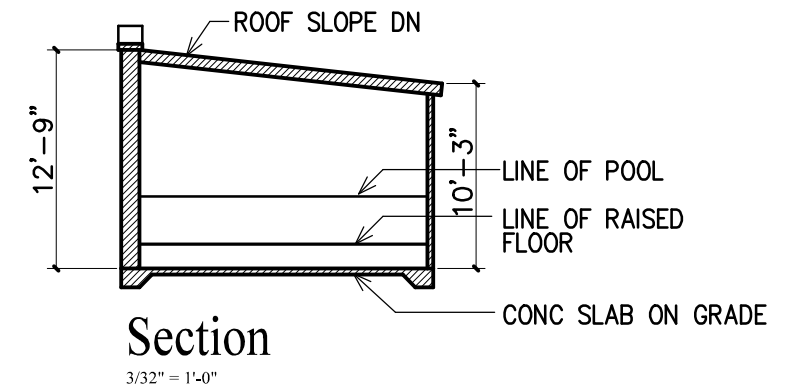
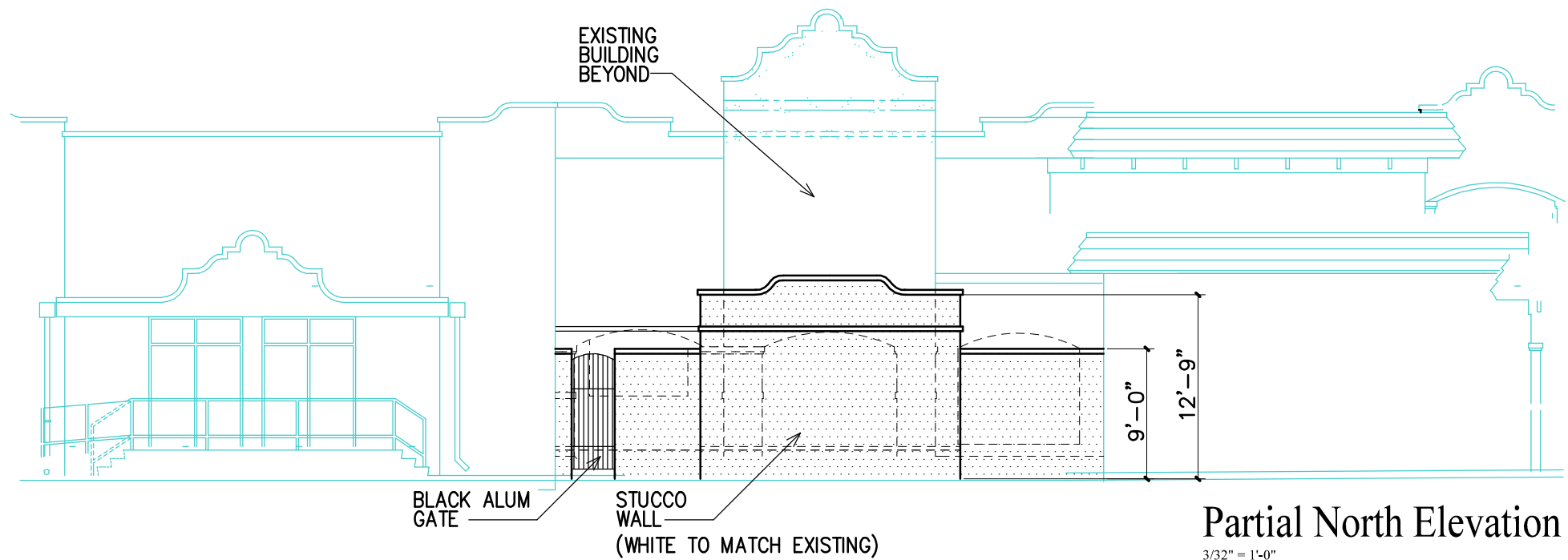
TELEPHONE # \_\_\_\_\_ 850.433.5575 \_\_\_\_\_

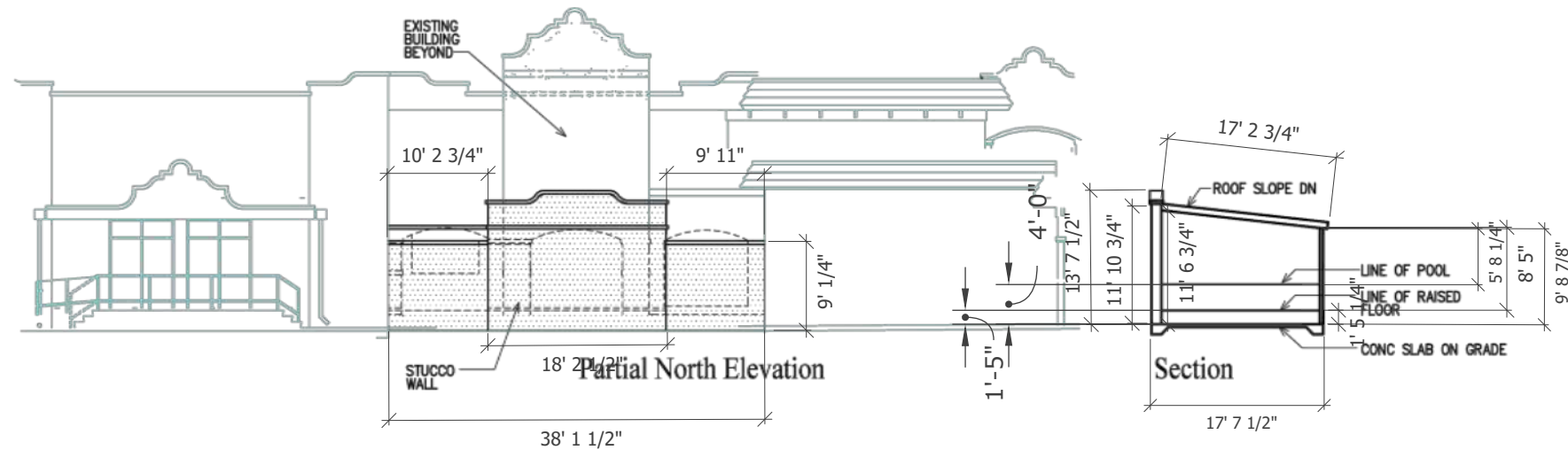
DATE APPLICATION RECEIVED: \_\_\_\_\_ RECEIPT NO. \_\_\_\_\_



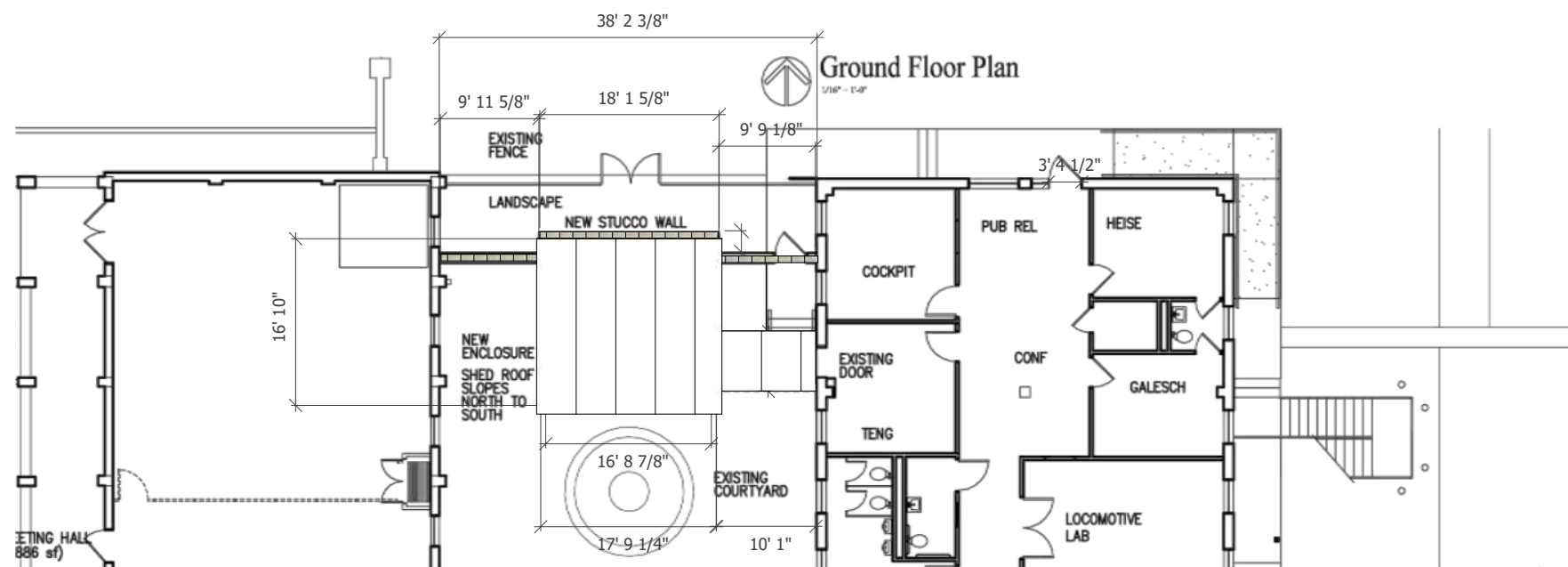




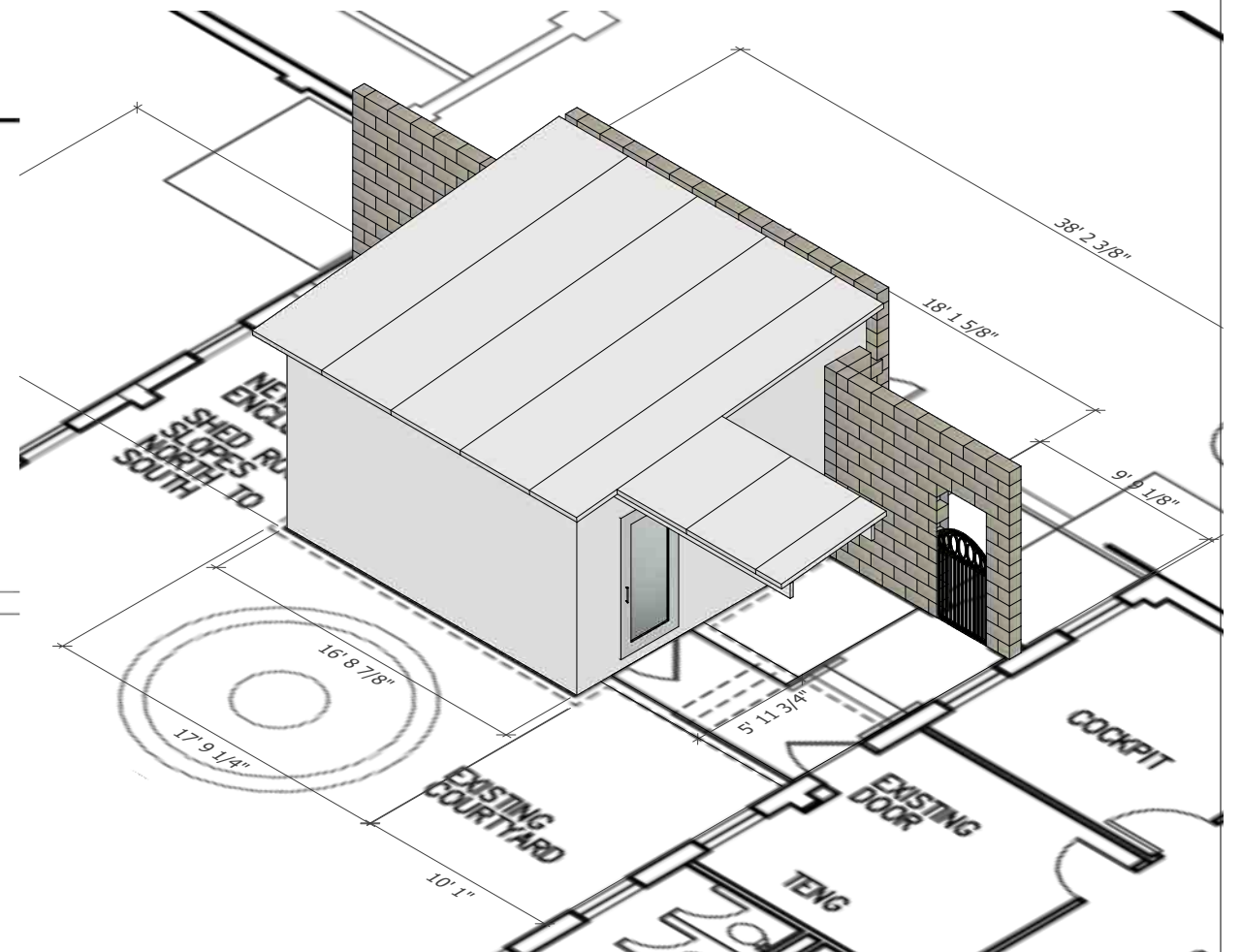




**A**  
**1** QUINA PROVIDED  
\*N.T.S.

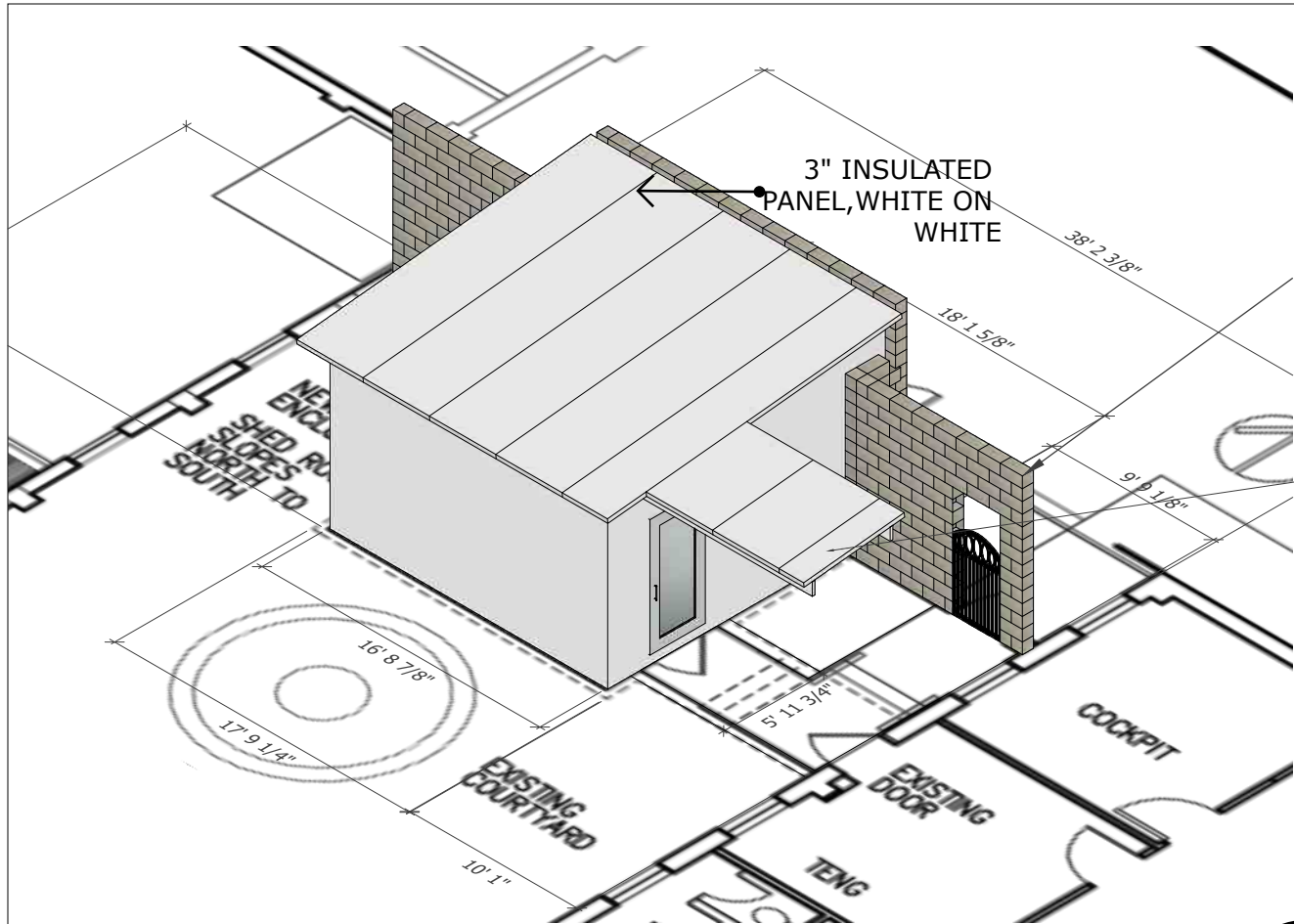


**A**  
**2** QUINA PROVIDED  
\*N.T.S.



**A**  
**3** ISO OVER PLAN VIEW  
\*N.T.S.

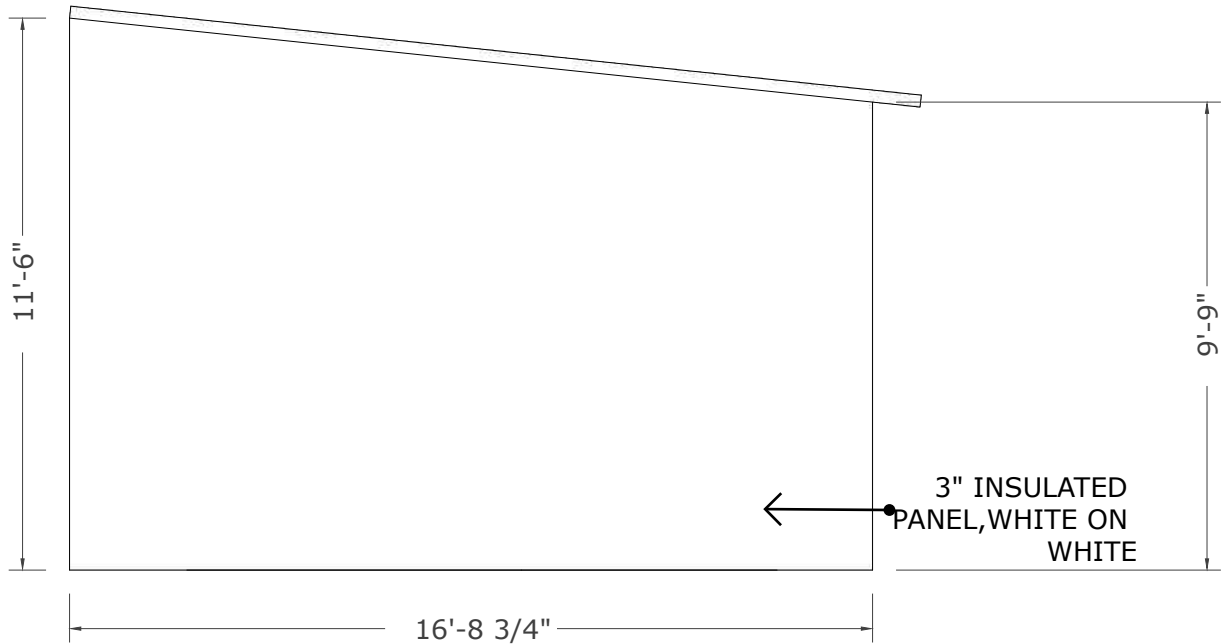




ISO VIEW

\*1/4"=1'-0"

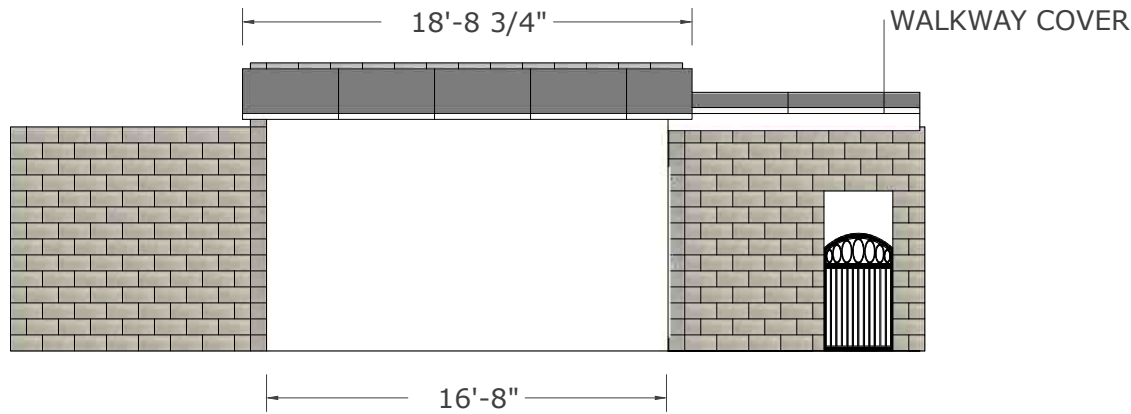
A  
4



WEST ELEVATION

\*1/4"=1'-0"

A  
7



SOUTH ELEVATION

\*1/8"=1'-0"

A  
5

3" INSULATED PANEL, WHITE ON WHITE

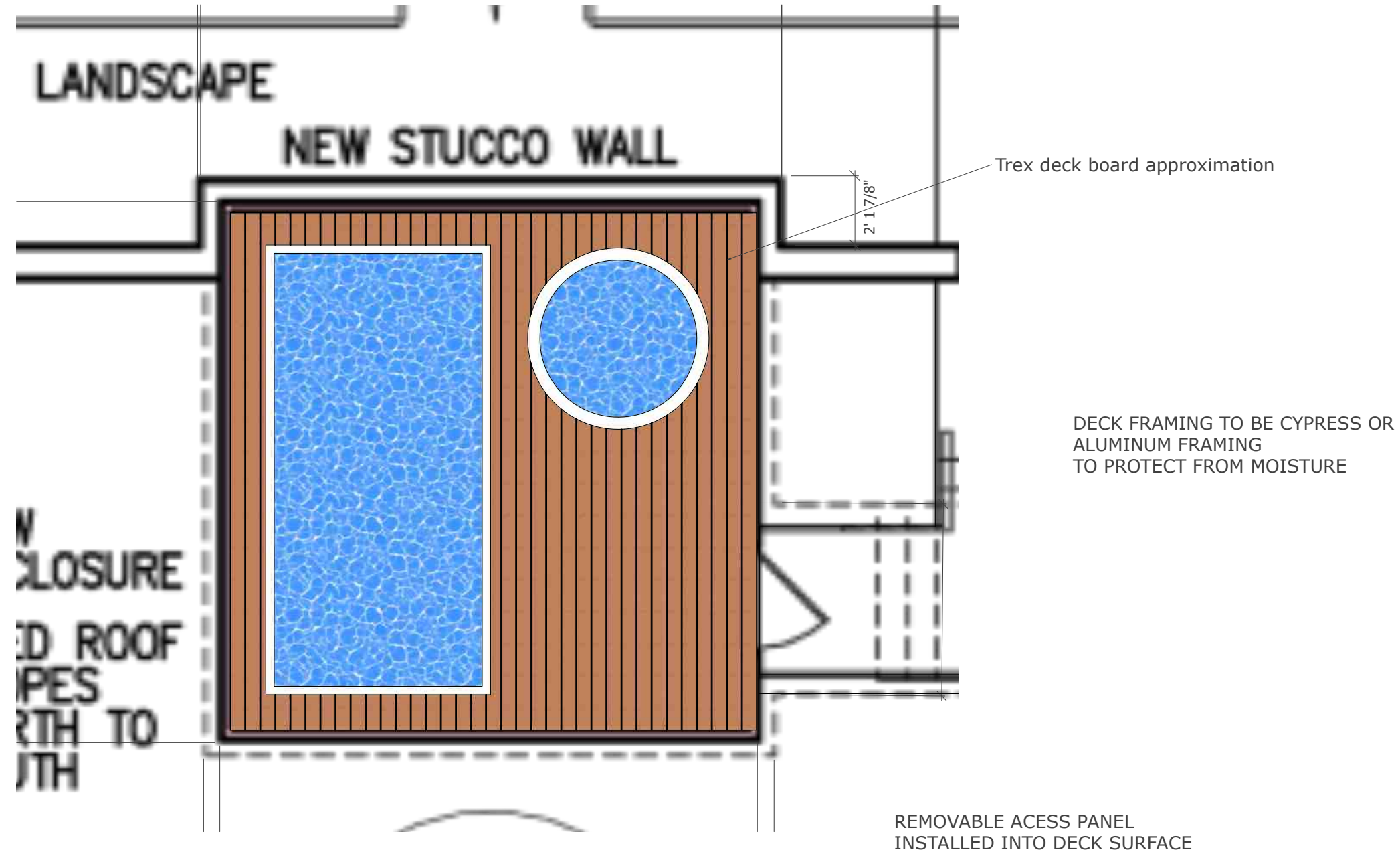
36" SELF CLOSING EXTERIOR ALUMINUM ENTRY DOOR

3" INSULATED PANEL, WHITE ON WHITE

WEST ELEVATION

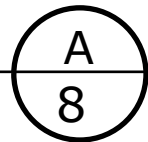
\*1/4"=1'-0"

A  
6



## DECK LAYOUT

\*1/4"=1'-0"





## Gregg Harding

---

**To:** Carter Quina  
**Subject:** RE: [EXTERNAL] Fwd: Christon Dunahoo RENDERING.pdf

**From:** Carter Quina <cquina@qgarchitects.com>  
**Sent:** Tuesday, September 7, 2021 11:47 AM  
**To:** Gregg Harding <GHarding@cityofpensacola.com>  
**Subject:** RE: [EXTERNAL] Fwd: Christon Dunahoo RENDERING.pdf

Hey Gregg, thanks for your patience. Do I need to revise the plans are will this response suffice?

1. The roof panels will be by the snap-n-lock system manufacturer as it makes the temporary building more easily moved in the future. Actual material sample will be brought to the meeting.
2. The window will be by the snap-n-lock manufacturer and is aluminum frame. The client technically does not want a window but it may be a requirement for emergency egress purposes. I will know for sure by the meeting date.
3. The deck will be Trex decking.
4. The new railing will be aluminum, painted black to match the typical campus detail.
5. The stucco wall will have an aluminum, painted black, gate and not a door as shown on the rendering.

Thank you.

Carter Quina, AIA  
**Quina Grundhoefer Architects**  
400 West Romana Street  
Pensacola, Florida 32502  
850-433-5575  
QGarchitects.com

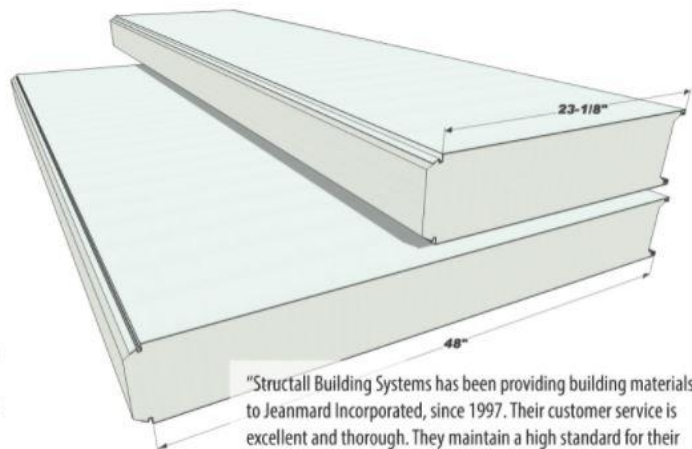
This is a link directly to the information in addition to the attached.

<https://structall.com/pages/snap-n-lock>

**STRUCTALL HAS BEEN SUPPLYING CONTRACTORS, LIKE YOU, WITH  
QUALITY PATIO CONSTRUCTION PRODUCTS, SINCE 1987.**

Structall Building Systems offers a complete line of structural insulated panels (SIPs) perfect for residential, commercial and industrial applications. Panels are comprised of various components, including aluminum, steel, oriented strand board (OSB), and polystyrene foam.

The Snap-N-Lock™ Panel, our most requested panel, has an expanded polystyrene foam core with aluminum or steel exterior skins. The skins are rolled to form a unique locking system that snaps together quickly and easily. The foam is routed to form a continuous foam interface which makes the panel extremely energy efficient. The Snap-N-Lock™ Panel also has its own structural integrity. A wide variety of building materials including shingles and vinyl siding can be applied directly to the exterior of the panel; however the baked enamel finish makes this step purely cosmetic. There is no long term inconvenience; most structures can be erected in as little as a day with a small crew.



"Structall Building Systems has been providing building materials to Jeanmard Incorporated, since 1997. Their customer service is excellent and thorough. They maintain a high standard for their customers. Great company to deal with."

*David Jeanmard - Jeanmard Incorporated - Ville Platte, LA*

The Snap-N-Lock™ Panel is just the beginning in a complete line of energy-efficient building panels. Panels are available 1" to 8" thick, up to 32' long and in 23-1/8" or 48" widths. All panels adapt easily to a variety of floor plans and offers a wide range of design flexibility and usages including homes, in-plant offices, freestanding units, restaurants, industrial storage units, condominium carport facilities and loading zone

---



# More Sizes. More Colors. More Options.

**White**  
Smooth  
26ga G90 Galvanized Steel  
Ceram-A-Star 1050 Coating

**White**  
Stucco Embossed  
26ga G90 Galvanized Steel  
Ceram-A-Star 1050 Coating

**White**  
Stucco Embossed  
.024 & .030 Aluminum  
 

**White**  
Cedar Embossed  
.024 Aluminum  
 

**Ivory**  
Stucco Embossed  
.024 Aluminum  


**Ivory**  
Cedar Embossed  
.024 Aluminum  


## What is Tuff-Kote Gold?

Tuff-Kote Gold is a dual-layer paint finish with a base color layer, and a clear protective top layer. The top coat is fused to the base coat during the baking cycle. The result is a paint finish that is more resistant to damage than standard paint finishes.

- Durable satin matte finish.
- More resistant to weather and alkalines.
- Requires less maintenance than other finishes.
- Resists scratching, marring, corrosion and fading.
- Protects against surface damage during installation process.

**Mill Finish**  
Smooth  
.024 Aluminum  
Clearcoat

**Desert Sand**  
Cedar Embossed  
.024 Aluminum  


**Sandstone**  
Stucco Embossed  
.024 Aluminum  


**Sandstone**  
Cedar Embossed  
.024 Aluminum  


**Adobe**  
Stucco Embossed  
.024 Aluminum  


**Bronze**  
Stucco Embossed  
.024 Aluminum  






Home

Snap-N-Lock ▾

About ▾ Engineering

Store Contact Us ▾



## Structall Steel SIP Homes



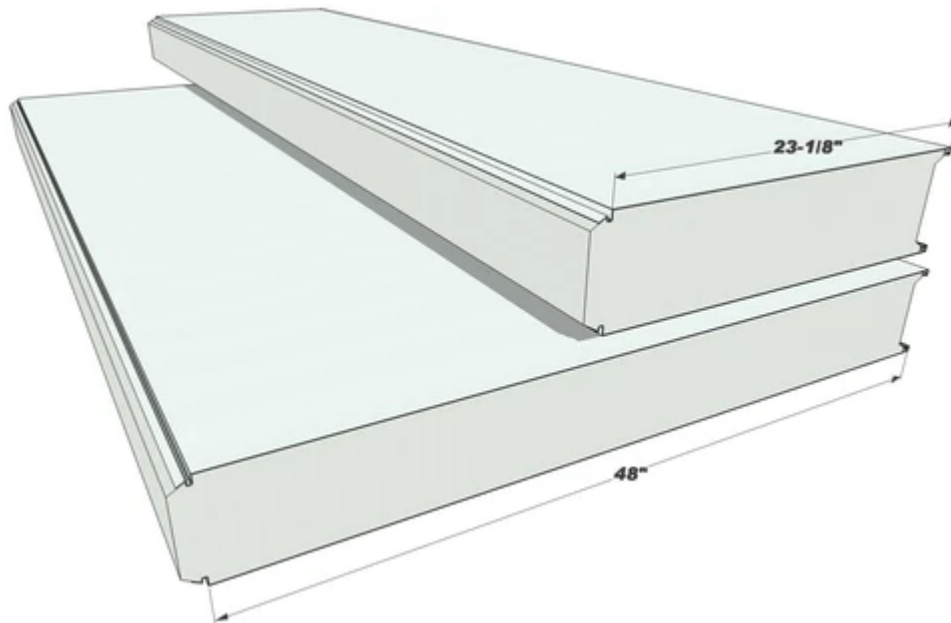
[Click Here to Learn More About Building Structures with Steel SIPs](#)

## **SIPS ARE HIGH-PERFORMANCE BUILDING PANELS FOR FLOORS, WALLS AND ROOFS IN RESIDENTIAL AND COMMERCIAL BUILDINGS.**

Structall Building Systems uses expanded polystyrene (EPS) foam insulation sandwiched between two structural skins of steel, resulting in a building system that is strong, predictable, energy-efficient, and cost effective. The Snap-N-Lock™ Insulated Panel combines the energy-



efficiency of foam core building panels with a unique joint design that adds strength to the wall and roof units and simply snaps together. The internal snap-lock fastening system provides a sealant reservoir which covers and protects the sealant from harsh elements. Deterioration of the sealant is reduced over time, which ensures that a waterproof bond is maintained. The panels, when snapped together, form a continuous foam interface for maximum energy savings. Gaps are virtually eliminated in the wall and roof. There is less settling or compressing, less moisture absorption or dust saturation, and considerably fewer cavities that permit convection or air circulation than in conventional framing methods. All these factors dramatically improve the energy-efficiency of the home. In case studies heating and cooling costs have been cut as much as 58% compared to a stick-built structure with the same insulation value and square footage.

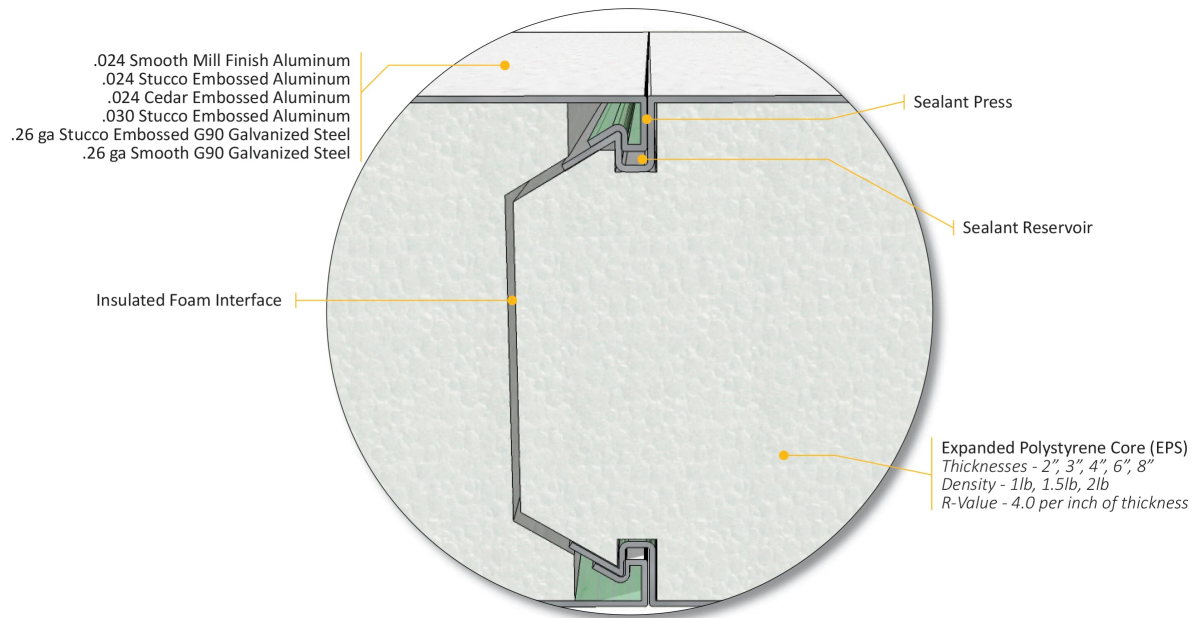
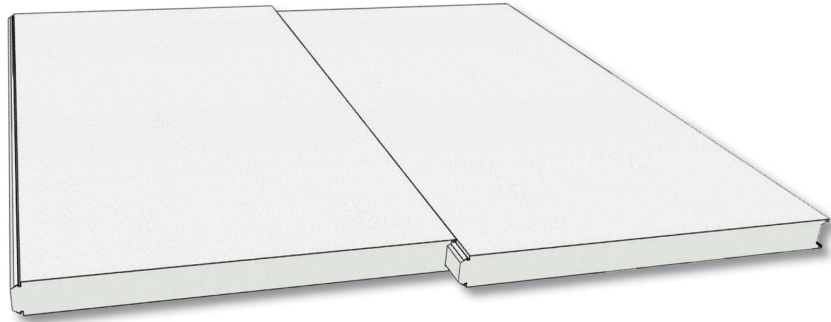


**THIS SYSTEM IS STRUCTURALLY SUPERIOR  
OVER CONVENTIONAL STUD FRAMING METHODS.**

The core of rigid expanded polystyrene foam provides shear strength,

while the exterior skins provide tensile and compressive strength. Because a continuous wall and roof are formed by the Snap-N-Lock™ Insulated Panel, it can use all its capacity to support vertical loads, has greater racking resistance and can resist local loads, buckling and bending. These are important characteristics for resisting earthquake and hurricane forces. The panels are so strong and dimensionally stable that the work crew can actually walk on the first roof panel after it is secured into place.

- Internal Snap-Lock fastening feature.
- Snaps together in header.
- No rocking of panels required.
- Metal is chemically bonded to foam.
- Continuous Insulation.
- Quick and easy to install.
- Foam thicknesses from 2" to 8".
- Panels come in 48" or 23-1/8" widths.
- Eliminates condensation problems.
- Skylights and fans installed with ease.



- Florida Product Approved (HVHZ)**  
 Approval #: FL-15491-R4  
 Approval #: FL21443.1 & .2 - R1  
 Approval #: FL-19974-R1
- California FBH Approved**  
 CALRP2410 and CALRP026g
- Texas Department of Insurance Approved**  
 Approval #: RC-247
- International Code Council - ICC**  
 The Snap-N-Lock™ Panel is recognized by ICC-ES  
 # ESR- 2488 and # ESR-3152
- ENERGY STAR® Certified**  
 .024 & .030 Aluminum Snap-N-Lock™ Composite Roof Panels with White Tuff-Kote Gold Dual Layer Paint Finish meet or exceed the requirements set forth by ENERGY STAR®.
- Aluminum Association of Florida**  
 The Florida Building Commission has formally adopted the AAF Guide Book into the Florida Building Code.

Colors & Textures					
					
White Smooth Steel	White Stucco Steel	White Stucco Aluminum	White Cedar Aluminum	Ivory Stucco Aluminum	Ivory Cedar Aluminum
					
Mill Finish Smooth Aluminum	Desert Sand Cedar Aluminum	Sandstone Stucco Aluminum	Sandstone Cedar Aluminum	Adobe Stucco Aluminum	Bronze Stucco Aluminum



## Interested in building with steel panels?

Read our frequently asked questions when building with steel sips.

# SNAP-N-LOCK™ STRUCTURAL INSULATED PANEL (SIP) COMPARISON



<b>Skins:</b>	<b>.024 Aluminum</b>	<b>.030 Aluminum</b>	<b>26ga G90 Galvanized Steel</b>
<b>Textures:</b>	Smooth, Stucco, Cedar	Stucco	Smooth, Stucco
<b>Colors:</b>	Mill, White, Ivory, Sandstone, Adobe, Bronze, Desert Sand	White	White
Mill Finish / Smooth	•		
White / Smooth			•
White / Stucco	•	•	•
White / Cedar	•		
Ivory / Stucco	•		
Ivory / Cedar	•		
Sandstone / Stucco	•		
Sandstone / Cedar	•		
Adobe / Stucco	•		
Bronze / Stucco	•		
Desert Sand / Cedar	•		
<b>Thickness:</b>	2", 3", 4", 6", 8"	2", 3", 4", 6", 8"	2", 3", 4", 6", 8"
<b>EPS Foam:</b>	1lb, 1.5lb, 2lb	1lb, 1.5lb, 2lb	1lb, 1.5lb, 2lb

**Insect Resistant  
Foam:**

Available

Available

Available

**Finish:**

Sherwin  
Williams  
Polyester  
w/ Crystal Coat

Sherwin  
Williams  
Polyester  
w/ Crystal Coat

Akso USDA  
White  
Ceram-a-star  
Medium Gloss

**350 Burbank Road Oldsmar FL 34677**

Toll-Free: 800-969-3706

Sales: 877-314-2509

E-mail: [info@structall.com](mailto:info@structall.com)

### Newsletter

Email address

**SUBSCRIBE**





Home

Snap-N-Lock ▾

About ▾ Engineering

Store Contact Us ▾



## Structall Steel SIP Homes



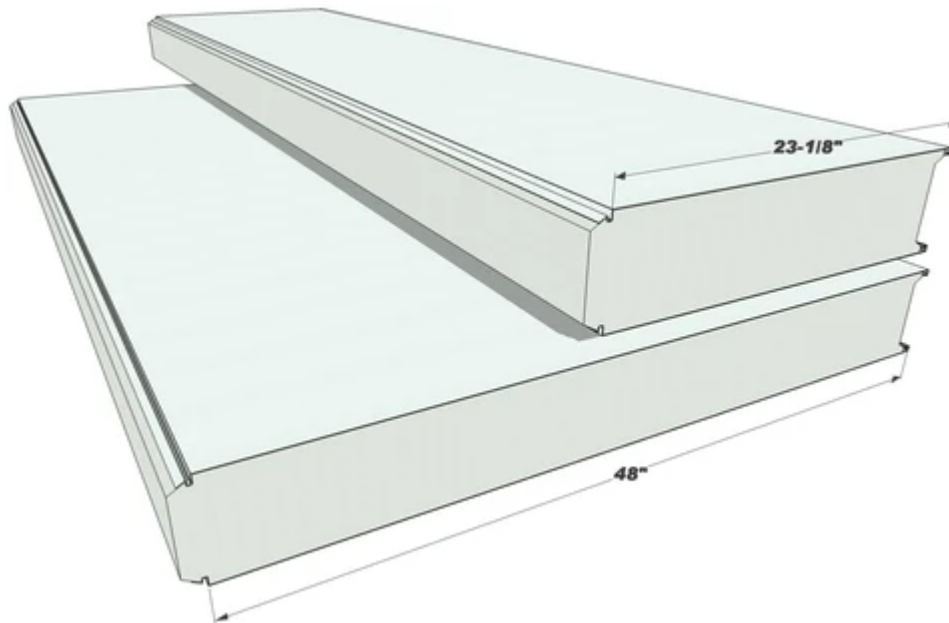
[Click Here to Learn More About Building Structures with Steel SIPs](#)

## **SIPS ARE HIGH-PERFORMANCE BUILDING PANELS FOR FLOORS, WALLS AND ROOFS IN RESIDENTIAL AND COMMERCIAL BUILDINGS.**

Structall Building Systems uses expanded polystyrene (EPS) foam insulation sandwiched between two structural skins of steel, resulting in a building system that is strong, predictable, energy-efficient, and cost effective. The Snap-N-Lock™ Insulated Panel combines the energy-



efficiency of foam core building panels with a unique joint design that adds strength to the wall and roof units and simply snaps together. The internal snap-lock fastening system provides a sealant reservoir which covers and protects the sealant from harsh elements. Deterioration of the sealant is reduced over time, which ensures that a waterproof bond is maintained. The panels, when snapped together, form a continuous foam interface for maximum energy savings. Gaps are virtually eliminated in the wall and roof. There is less settling or compressing, less moisture absorption or dust saturation, and considerably fewer cavities that permit convection or air circulation than in conventional framing methods. All these factors dramatically improve the energy-efficiency of the home. In case studies heating and cooling costs have been cut as much as 58% compared to a stick-built structure with the same insulation value and square footage.

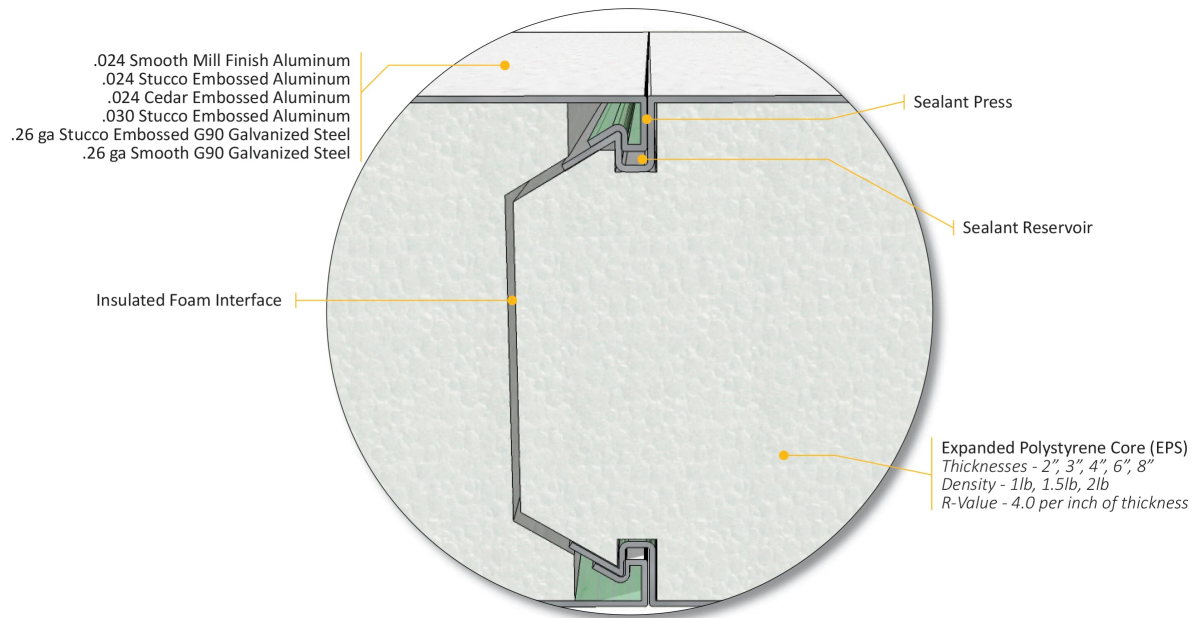
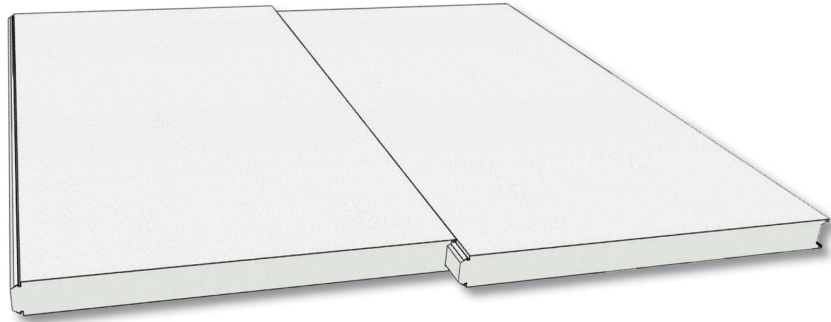


**THIS SYSTEM IS STRUCTURALLY SUPERIOR  
OVER CONVENTIONAL STUD FRAMING METHODS.**

The core of rigid expanded polystyrene foam provides shear strength,

while the exterior skins provide tensile and compressive strength. Because a continuous wall and roof are formed by the Snap-N-Lock™ Insulated Panel, it can use all its capacity to support vertical loads, has greater racking resistance and can resist local loads, buckling and bending. These are important characteristics for resisting earthquake and hurricane forces. The panels are so strong and dimensionally stable that the work crew can actually walk on the first roof panel after it is secured into place.

- Internal Snap-Lock fastening feature.
- Snaps together in header.
- No rocking of panels required.
- Metal is chemically bonded to foam.
- Continuous Insulation.
- Quick and easy to install.
- Foam thicknesses from 2" to 8".
- Panels come in 48" or 23-1/8" widths.
- Eliminates condensation problems.
- Skylights and fans installed with ease.



- Florida Product Approved (HVHZ)**  
 Approval #: FL-15491-R4  
 Approval #: FL21443.1 & .2 - R1  
 Approval #: FL-19974-R1
- California FBH Approved**  
 CALRP2410 and CALRP026g
- Texas Department of Insurance Approved**  
 Approval #: RC-247
- International Code Council - ICC**  
 The Snap-N-Lock™ Panel is recognized by ICC-ES  
 # ESR- 2488 and # ESR-3152
- ENERGY STAR® Certified**  
 .024 & .030 Aluminum Snap-N-Lock™ Composite Roof Panels with White Tuff-Kote Gold Dual Layer Paint Finish meet or exceed the requirements set forth by ENERGY STAR®.
- Aluminum Association of Florida**  
 The Florida Building Commission has formally adopted the AAF Guide Book into the Florida Building Code.

Colors & Textures					
					
White Smooth Steel	White Stucco Steel	White Stucco Aluminum	White Cedar Aluminum	Ivory Stucco Aluminum	Ivory Cedar Aluminum
					
Mill Finish Smooth Aluminum	Desert Sand Cedar Aluminum	Sandstone Stucco Aluminum	Sandstone Cedar Aluminum	Adobe Stucco Aluminum	Bronze Stucco Aluminum



## Interested in building with steel panels?

Read our frequently asked questions when building with steel sips.

# SNAP-N-LOCK™ STRUCTURAL INSULATED PANEL (SIP) COMPARISON



<b>Skins:</b>	<b>.024 Aluminum</b>	<b>.030 Aluminum</b>	<b>26ga G90 Galvanized Steel</b>
<b>Textures:</b>	Smooth, Stucco, Cedar	Stucco	Smooth, Stucco
<b>Colors:</b>	Mill, White, Ivory, Sandstone, Adobe, Bronze, Desert Sand	White	White
Mill Finish / Smooth	•		
White / Smooth			•
White / Stucco	•	•	•
White / Cedar	•		
Ivory / Stucco	•		
Ivory / Cedar	•		
Sandstone / Stucco	•		
Sandstone / Cedar	•		
Adobe / Stucco	•		
Bronze / Stucco	•		
Desert Sand / Cedar	•		
<b>Thickness:</b>	2", 3", 4", 6", 8"	2", 3", 4", 6", 8"	2", 3", 4", 6", 8"
<b>EPS Foam:</b>	1lb, 1.5lb, 2lb	1lb, 1.5lb, 2lb	1lb, 1.5lb, 2lb

**Insect Resistant  
Foam:**

Available

Available

Available

**Finish:**

Sherwin  
Williams  
Polyester  
w/ Crystal Coat

Sherwin  
Williams  
Polyester  
w/ Crystal Coat

Akso USDA  
White  
Ceram-a-star  
Medium Gloss

**350 Burbank Road Oldsmar FL 34677**

Toll-Free: 800-969-3706

Sales: 877-314-2509

E-mail: [info@structall.com](mailto:info@structall.com)

### Newsletter

Email address

**SUBSCRIBE**

