



City of
Pensacola
*America's First Settlement
And Most Historic City*

**Architectural Review Board Application
Full Board Review**

Application Date: **10/28/21**

Project Address: 36 East Garden Street Pensacola FL

Applicant: 90 East Garden Street LLC

Applicant's Address: 41 N Jefferson Street, Pensacola FL 32502

Email: tb@gulfbluegroup.com **Phone:** 850 776 2655

Property Owner: 90 East Garden Street LLC

District: ☒ **PHD** ☐ **NHPD** ☐ **OEHPD** ☐ **PHBD** ☐ **GCD**
(If different from Applicant)

Application is hereby made for the project as described herein:

☐ Residential Homestead – \$50.00 hearing fee

☒ Commercial/Other Residential – \$250.00 hearing fee

** An application shall be scheduled to be heard once all required materials have been submitted and it is deemed complete by the Secretary to the Board. You will need to include ten (10) copies of the required information. Please see pages 3 – 4 of this application for further instruction and information.*

Project specifics/description:

This Application is for the final approval of The Union Public House

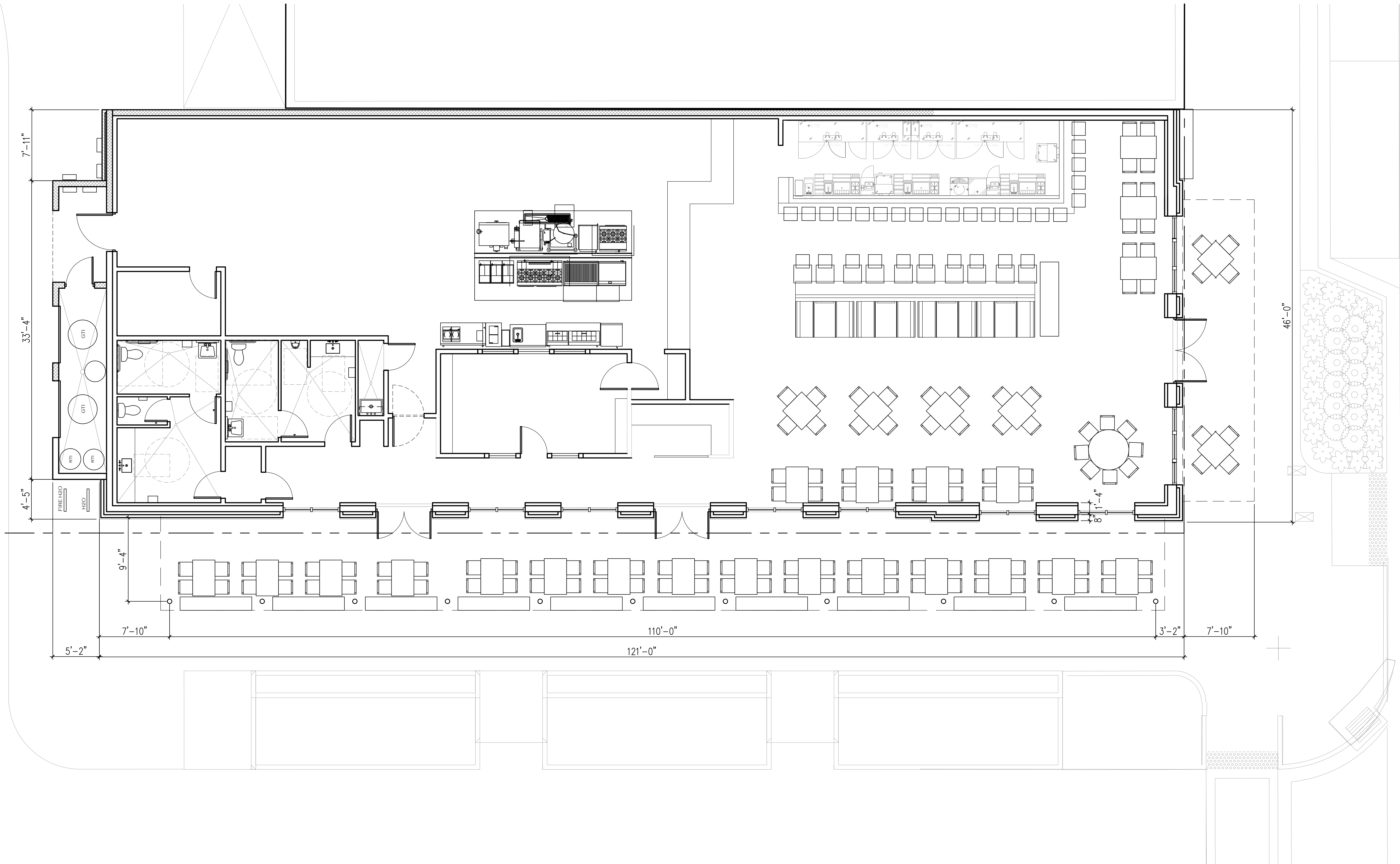
I, the undersigned applicant, understand that payment of these fees does not entitle me to approval and that no refund of these fees will be made. I have reviewed the applicable zoning requirements and understand that I must be present on the date of the Architectural Review Board meeting.

Applicant Signature

7/29/2021 | 3:20 PM CDT

Date

Planning Services
222 W. Main Street * Pensacola, Florida 32502
(850) 435-1670
Mail to: P.O. Box 12910 * Pensacola, Florida 32521



 1
A-101 FLOOR PLAN
SCALE: 3/16" = 1'-0"

Listen. Interpret. Translate.

CERTIFICATION :

UNION
PUBLIC
HOUSE

36 E. Garden Street
Pensacola, Florida

ALL DRAWINGS AND WRITTEN MATERIAL
HEREIN CONSTITUTE ORIGINAL AND UN-
PUBLISHED WORK OF THE ARCHITECT
AND MAY NOT BE DUPLICATED IN ANY
PART WITHOUT THE WRITTEN CONSENT
OF THE ARCHITECT.

REVISIONS :

DRAWN BY : RM

CHECKED BY : BS

PROJECT NO. 2124

DATE : 9/1/21

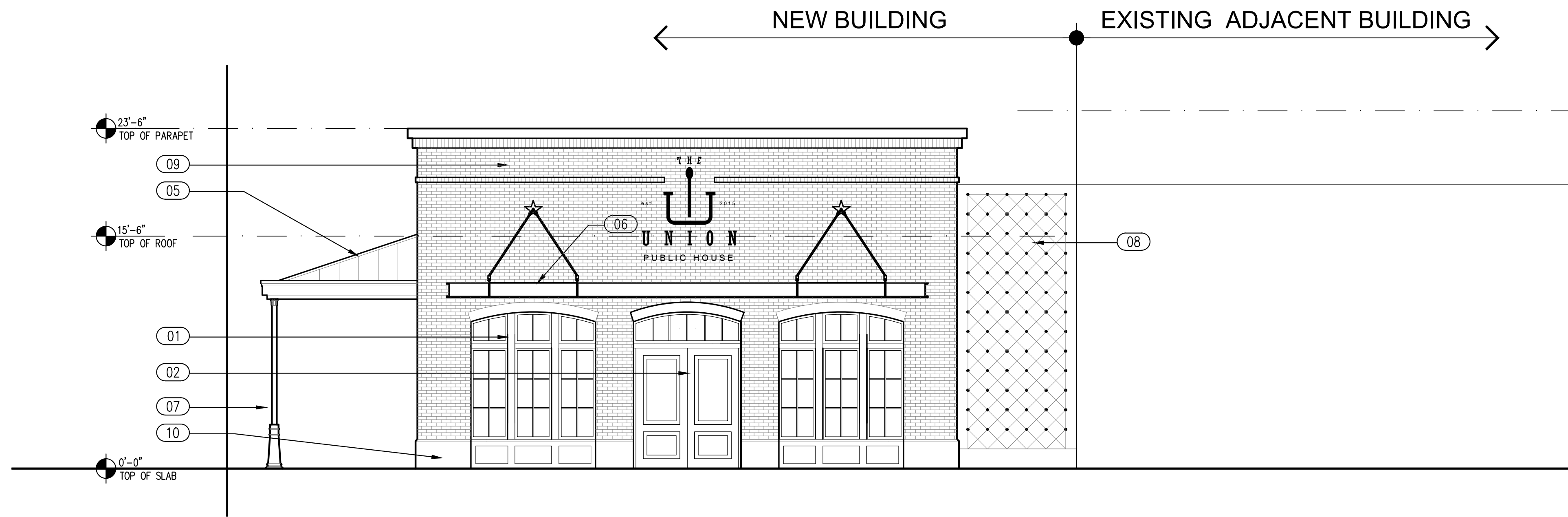
SHEET TITLE :

EXERIOR
ELEVATIONS

SHEET NO. :

A-201

©2021 SMP ARCHITECTURE



1 SOUTH ELEVATION (GARDEN STREET)
A-201 SCALE: 3/16" = 1'-0"



2 WEST ELEVATION (JEFFERSON STREET)
A-201 SCALE: 3/16" = 1'-0"



3 NORTH REAR ELEVATION
A-201 SCALE: 3/16" = 1'-0"

KEY NOTES :

- 01 ALUMINUM WINDOW SYSTEM.
- 02 ALUMINUM ENTRY DOOR SYSTEM.
- 03 STUCCO SYSTEM
- 04 HOLLOW METAL DOOR & FRAME.
- 05 PRE-FINISHED ALUMINUM STANDING SEAM METAL ROOF SYSTEM.
- 06 PRE-FINISHED ALUMINUM METAL CANOPY SYSTEM.
- 07 PRE-FINISHED ALUMINUM CAST IRON COLUMNS.
- 08 GREEN WALL SYSTEM.
- 9 FACE BRICK
- 10 CAST STONE

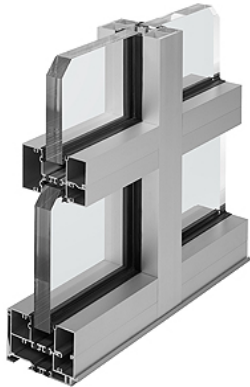


UNION
PUBLIC HOUSE

This website uses cookies for analytics and functionality, and advertising purposes. To change your cookie settings or find out more, [click here](#). If you continue browsing our website, you accept these cookies.

[Cookies Settings](#)

[Accept All Cookies](#)



IR 501T/501UT Framing System

- 2-3/4" (69.9mm) sightline
- 5" (127mm) depth
- High thermal or Ultra thermal performance
- Center plane glass applications
- Blast mitigation, hurricane resistance



Product Features

IR 501T Thermal Framing System and IR 501UT (Ultra Thermal) Framing System combines IsoLock® thermal break technology with insulating impact resistant glazing to provide the ultimate in occupant safety and comfort.

Key Features Include:

- IR 501T/501UT is 5" (127) deep and has a 2-3/4" (69.9) sightline / Expansion mullions have a 3" (76.2) sightline
- 2-piece or 3-piece mullion options
- Screw Spline fabrication
- IR 501T has an IsoLock® lanced pour and debridge thermal break
- IR 501UT has a dual IsoLock® lanced pour and debridge thermal break
- Center plane glass applications
- Outside glazed
- Permanodic® anodized finishes
- Painted finishes in standard and custom choice

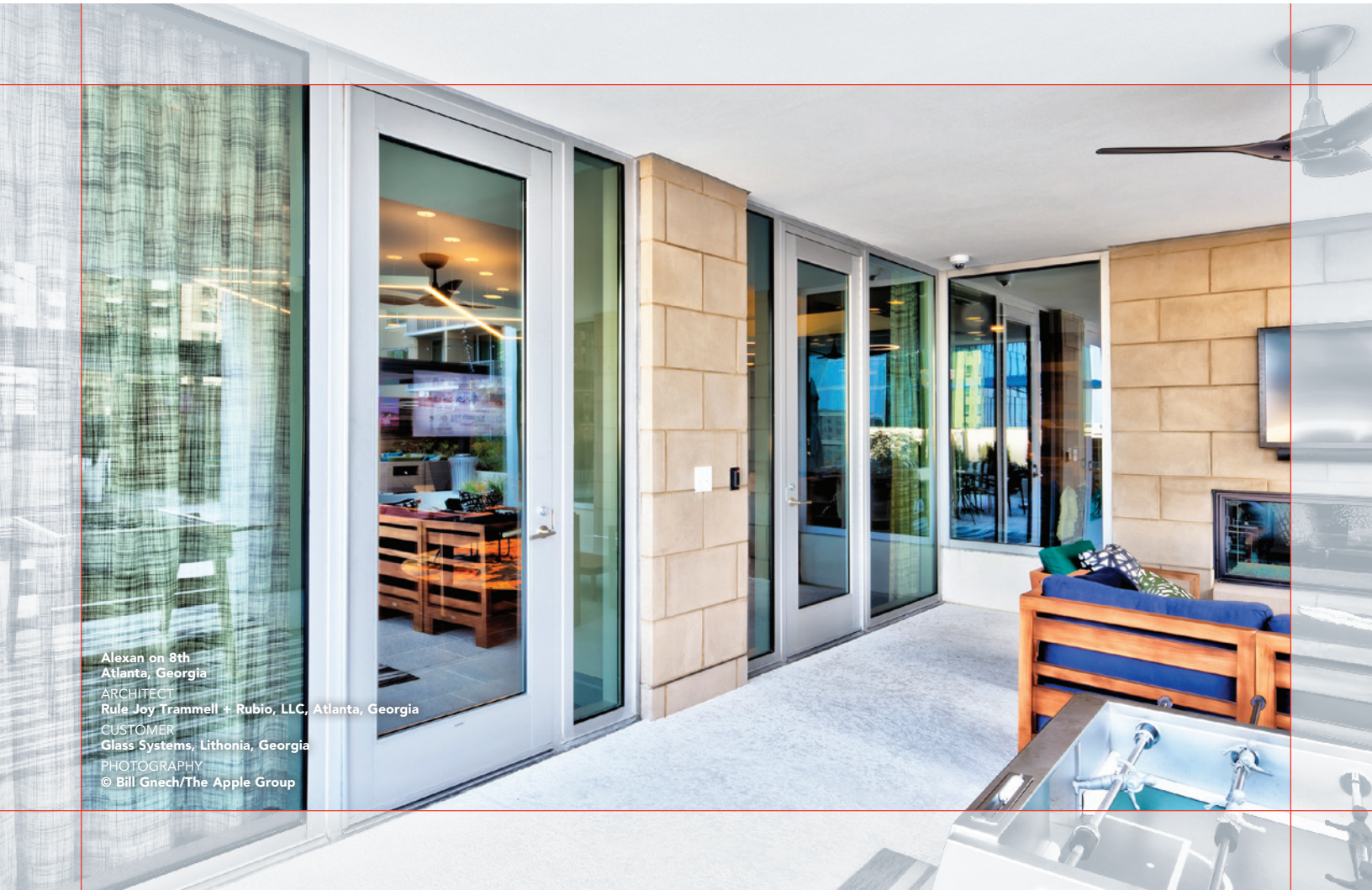
Optional Features:

- Integrated entrance framing
- 350/500 IR Medium Stile - single or pairs of entrances

Product Applications:

- Impact resistant
- Storefront, ribbon window or punched opening
- Low- to mid-rise

A New Kind of Thermal Roadblock



Alexan on 8th
Atlanta, Georgia
ARCHITECT
Rule Joy Trammell + Rubio, LLC, Atlanta, Georgia
CUSTOMER
Glass Systems, Lithonia, Georgia
PHOTOGRAPHY
© Bill Gnech/The Apple Group

As architects and building owners look for ways to decrease a building's energy consumption and energy costs, the need for thermally efficient products has increased throughout North America. Kawneer continues to set the standard in thermal performance with its innovative AA™250/425 Thermal Entrances. In conjunction with Kawneer's high-performing frame, the doors offer improved thermal efficiency compared to a standard door. By combining critical elements within the product design, AA™250/425 Thermal Entrances create a superior thermal roadblock. The thermal roadblock formula includes thermal breaks in the door, door frame and threshold that isolate the interior metal components from the exterior metal components; a door rail and stile design with a double air cavity provides an added layer to the thermal barrier; and dual weathering around the perimeter of the door in conjunction with a low-conductance polymer door stop minimizes air infiltration.

The benefits of Kawneer's AA™250/425 Thermal Entrances extend beyond industry-leading thermal performance. The company has introduced design flexibility in hardware options and injected value to support virtually any budget. Advanced thermally broken systems allow building owners to take advantage of tax incentive programs and green building certifications such as Leadership in Energy and Environmental Design (LEED®). And, with its proven performance and welded corner construction, Kawneer's AA™250/425 Thermal Entrances are the ideal choice for any commercial or institutional application.

PERFORMANCE

The door frame jambs and transom bar/door header tout a dual perimeter weather seal featuring Kawneer's Sealair bulb weathering. Also featured is triple-finned, soft pile weather-stripping that minimizes airflow around the perimeter edge of the door. At the bottom of the door, the combination of a thermally broken threshold and dual bottom door sweeps minimizes air infiltration. All of this adds up to a superior thermal roadblock that provides improved comfort and savings in heating and cooling costs.

AA™250/425 Thermal Entrances accommodate 1" insulating glass and insulating laminated glass to improve thermal and sound reduction performance. Laminated glass enhances STC and OITC (sound resistance) performance as well as improves occupant safety. Kawneer's thermal entrance doors have been tested and proven in accordance with North American performance standards for air, structural, sound transmission, condensation and thermal transmittance.

PERFORMANCE LEVELS

Air Infiltration	ASTM E283
Structural – uniform wind load	ASTM E330
Sound Transmission (STC, OITC)	ASTM E90, E1425
Condensation Resistance (CRF, I, CR)	AAMA 1503; CSA A440.2; NFRC 500
Thermal Transmittance – U-Factor	AAMA 1503, 507; NFRC 100

AESTHETICS

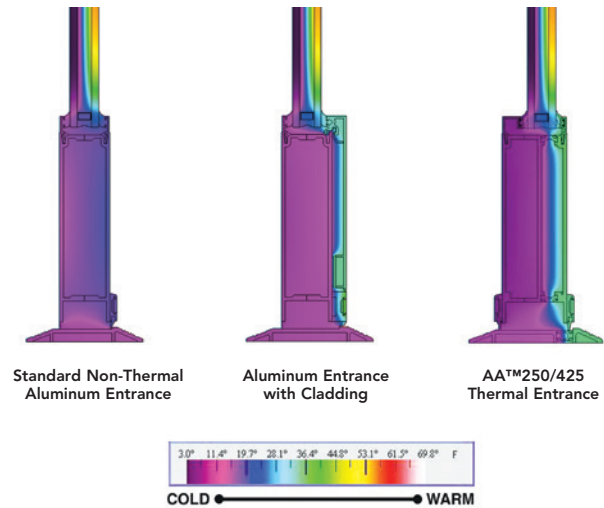
Breaking from tradition, Kawneer's AA™250/425 Thermal Entrances deliver a new aesthetic look with a 2-1/2" narrow stile and a 4-1/4" wide stile, respectively. To meet aesthetic and hardware application requirements, the entrances are also offered with a range of top and bottom rails.

	AA™250	AA™425
Stile widths	2-1/2" (63.5 mm)	4-1/4" (108 mm)
Top rail	2-1/2" (63.5 mm)	4-1/4" (108 mm)
Bottom rail	3-7/8" (98.4 mm)	6-1/2" (165.1 mm)

Horizontal mid-rails are available in 1-3/8" (34.9 mm) and 8-1/4" (209.6 mm) sizes. In addition, a 10" (254 mm) bottom rail option can be specified.

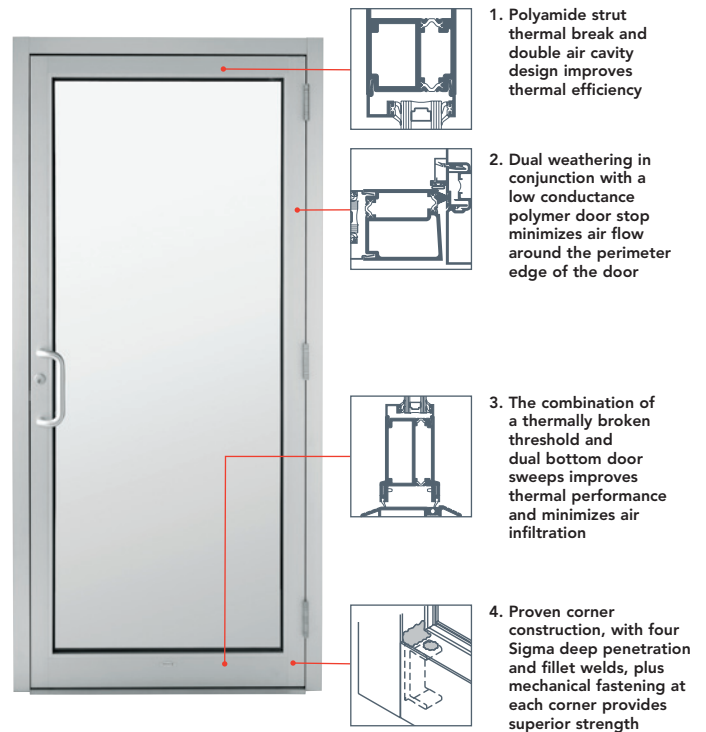
The 2-1/4" (57.2 mm) depth door uses a 14 mm polyamide strut thermal break that accommodates a dual finish as well as various combinations of hinging and locking hardware. These include offset pivots, butt hinges, continuous gear hinges, MS locking, concealed vertical rod exit devices and rim exit devices.

Thermal simulations showing temperature variations from exterior/cold side to interior/warm side.



FOR THE FINISHING TOUCH

Architectural Class I anodized aluminum finishes are available in clear and color choices. Painted finishes, including fluoropolymer, that meet AAMA 2605 standards and solvent-free powder coatings that meet AAMA 2604 standards are available in a variety of color choices.



PERMACOAT™ POWDER COATINGS

Solvent-Free Finishes That Add High Performance, Durability to Your World



*Denotes non-standard color



BLACK



BOYSENBERRY*



MILITARY BLUE*



CHARCOAL



DARK GREEN



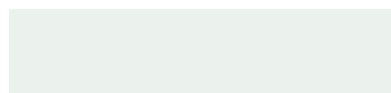
LIGHT GREEN*



BRICK RED



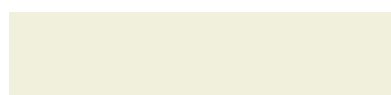
MEDIUM BLUE



MILK WHITE



ATLANTIC GRAY



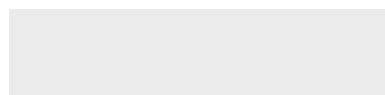
IVORY



SANDSTONE



ANTIQUE BRONZE



BONE WHITE



CLARET RED



MIDNIGHT BLUE



NIGHT HAWK GRAY*



SMOKE GRAY



LIGHT GRAY



SEPIA BROWN*



JAVA BROWN



HARTFORD GREEN



DOVE GRAY



CLASSIC BRONZE



DEEP BLUE



INTERSTATE GREEN



REDWOOD



DARK IVY*



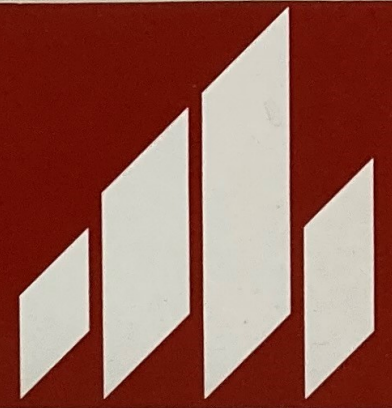
MEDIUM BRONZE



SEA WOLF



SUMMER YELLOW*



Bradford Hall Tudor
Lightweight Queen 6024030884
Brickhaven, NC

www.GeneralShale.com

DISCLAIMER: It is impossible with only a few units to illustrate all colors, color percentages and harmless materials that may occur in a full brick shipment. Therefore, this sample is intended to represent general color range and appearance.

SNAP-CLAD PANEL

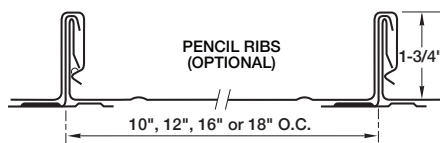
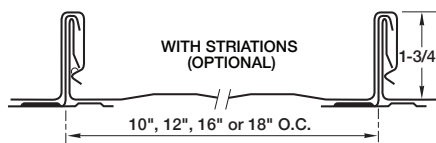
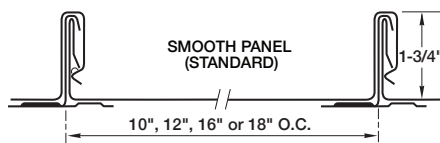
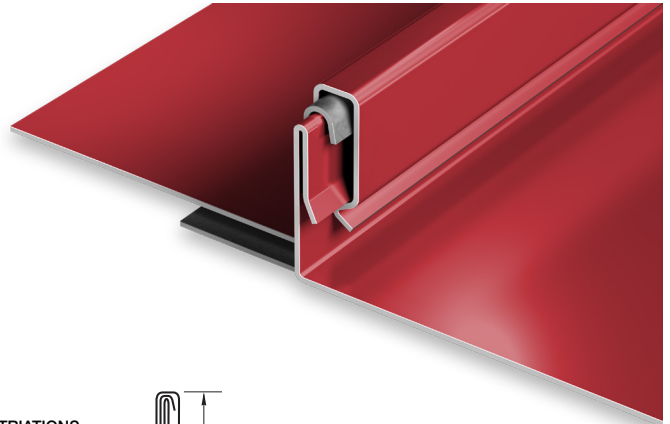
MATERIALS

.032 aluminum	24 gauge steel
.040 aluminum	22 gauge steel

SPECS

10", 12", 16" or 18" O.C. 1-3/4" High

UL-90



PRODUCT FEATURES

- ▶ Architectural/structural panel
- ▶ Factory-applied sealant available
- ▶ Continuous interlock
- ▶ Labor-saving one-piece design
- ▶ Pencil ribs upon request
- ▶ Striations upon request
- ▶ Factory eave notching available
- ▶ 30-year-non-prorated finish warranty
- ▶ Maximum factory-produced panel length is 64' (check w/factory for longer lengths)
- ▶ Weathertightness warranty available

- ▶ 43 stocked colors (24 gauge steel)
- ▶ 16 Stocked colors (22 gauge steel)
- ▶ 36 stocked colors (.032 aluminum)
- ▶ 22 stocked colors (.040 aluminum)
- ▶ Panels available in Galvalume Plus

UL CLASSIFICATION

- ▶ UL-580 Class 90 wind uplift
- ▶ UL-1897 wind uplift
- ▶ UL-790 Class A fire rated
- ▶ UL-263 fire resistance rated
- ▶ UL-2218 impact resistance rated

- ▶ UL-90 rated aluminum panel up to 16" O.C.
- ▶ UL-90 rated steel panel up to 18" O.C.

ASTM TESTS

- ▶ ASTM E1592 tested
- ▶ ASTM E283/1680 tested
- ▶ ASTM E331/1646 tested

FLORIDA BUILDING & MIAMI-DADE PRODUCT APPROVALS

Please refer to pac-clad.com or your local factory for specific product approval numbers for Snap-Clad.

Note: UL 90 is available on steel panels up to 18" on center, and on aluminum panels up to 16" on center.



FOREST GREEN



HARTFORD GREEN



▲ ★ MILITARY BLUE



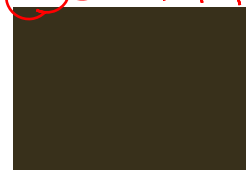
BERKSHIRE BLUE



▲ ★ SLATE BLUE



AWARD BLUE



▲ AGED BRONZE



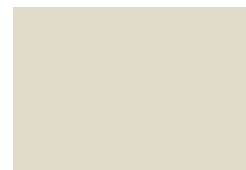
▲ MEDIUM BRONZE



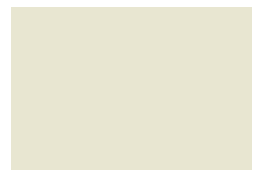
▲ ★ CARDINAL RED



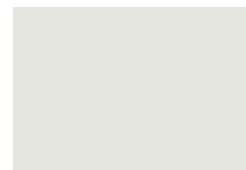
▲ ★ COLONIAL RED



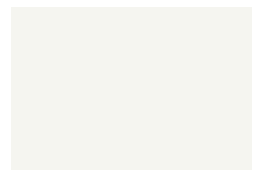
▲ ★ SANDSTONE



▲ ★ ALMOND



▲ ★ STONE WHITE



▲ ★ BONE WHITE

Color Guide

PAC-CLAD.COM

Green Wall System

Green façades for a pleasant atmosphere.

Facade greening, so far usually left to chance,

has gained a new dimension: Jakob® INOX LINE.

Attractive training systems for microgardens

can be built with a few easy-to-assemble com-

ponents made of high-grade stainless steel.

The days of haunted castles are over:

Green façades are appealing, ecologically

sensible and useful. The latest insights on

climbing plants combined with tastefully

designed and technically sophisticated train-

ing systems open a treasure chest of greening

variations and styles. Greening makes sense

from a construction physics point of view and

has many ecological benefits. The future is

indeed green: it will be shaped by the creative

collaboration of innovation-driven architects

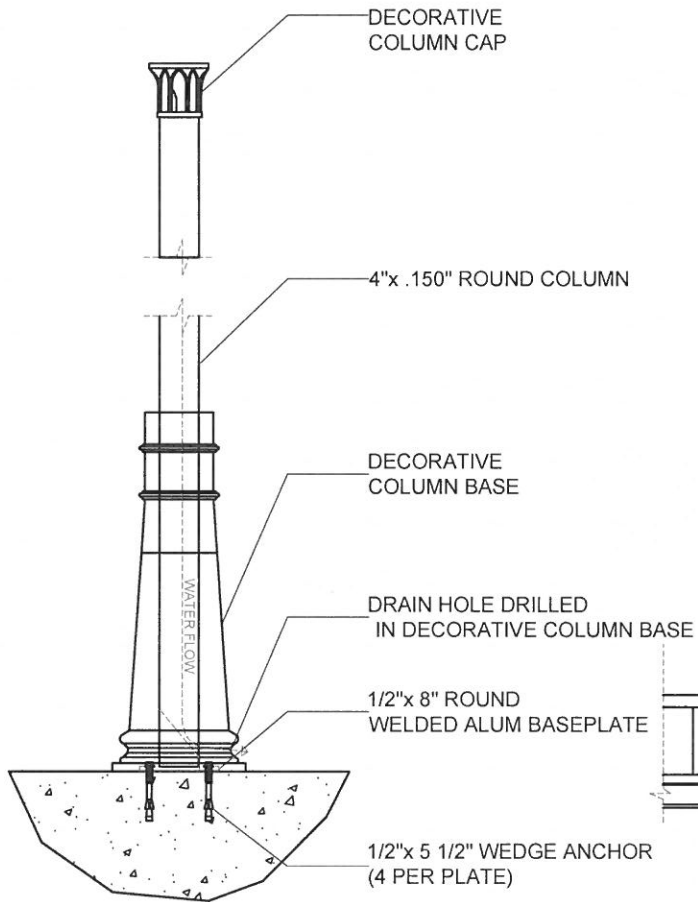
with greening specialists.



GULF SOUTH METALS

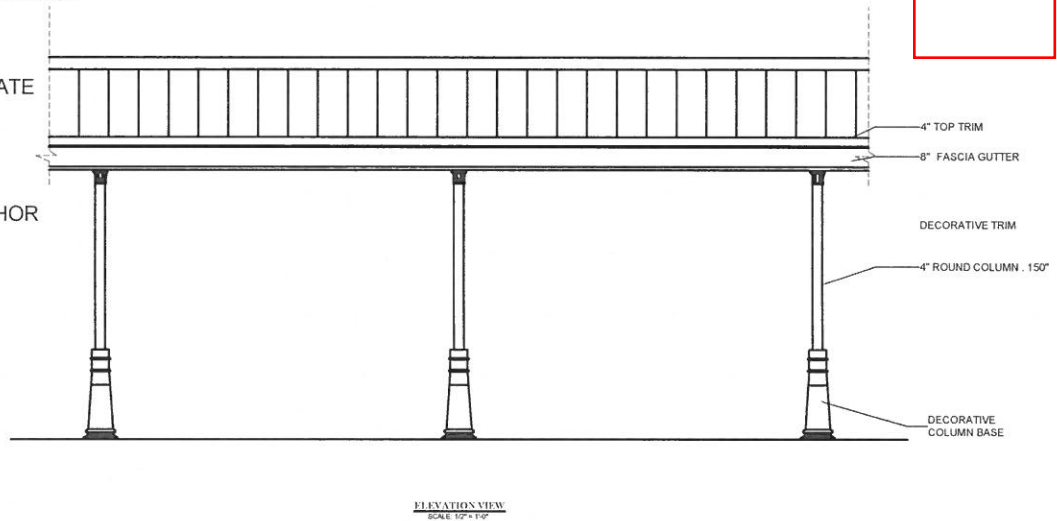
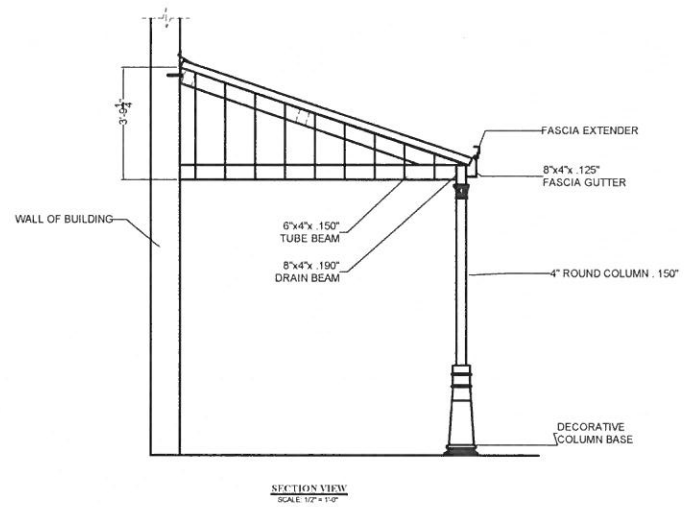
17869 SAMANTHA DRIVE FOLEY, AL 36535-9473
PHONE (251)943-6443 FAX (251)943-6432

**Pre Fin. Alum Canopy System
w/ Cast Aluminum columns and trim.**



COLUMN AND FOOTING DETAIL

SCALE: 1" = 1'-0"



NO.	REVISION DESCRIPTION	BY	DATE
	GEN. CONTRACTOR : GSM		
	ARCHITECT :		
	DRAWN BY: ADAM NOLEN	SCALE:	AS NOTED
	DRAWING NO: 17-045	PG. 1	DATE:

SUPER LUMIDECK

TECHNICAL DATA

All-extruded Aluminum (T6 - 6063)

Fascia .125"

Decking .078"

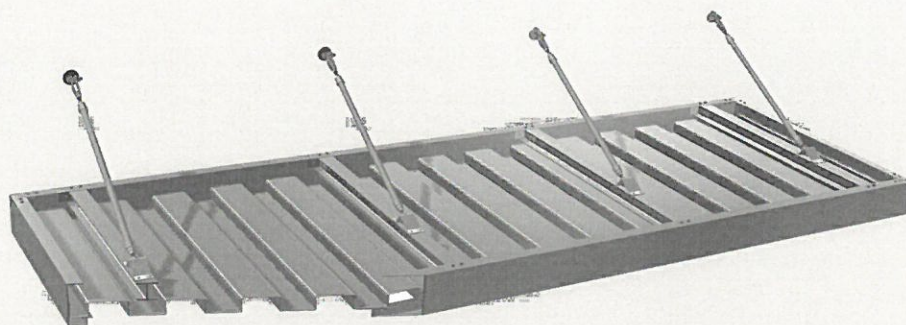
Deflection rating L/180

Maximum Projection

10' w/ hanger rod supports

5' w/ cantilever supports

Note: Engineered stamped calcs
available in all 50 states



CANOPY DETAILS

	Finishes	Warranty		Application
Mapes Standard Finishes	Clear Anodized, White Baked Enamel, & Bronze Baked Enamel	1 year	Meets AAMA 2603 specifications	Factory applied
2-Coat Kynar*	25 stock colors w/ unlimited custom matching options	10 years	70% Fluoropolymer meets AAMA 2605 specifications	Professionally applied & cured by certified finisher

*Additional lead times and costs associated w/ premium paints & custom color matching

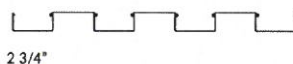
FEATURES

- 2 3/4" square corrugated decking
- High-load capacity
- Pre-engineered
- All-extruded Aluminum
- Rust & maintenance free
- Custom details & colors
- Pre-assembly options

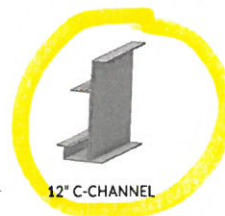
APPLICATIONS

- Retail branding
- Shopping centers
- Storefronts
- Office buildings
- Door & window covers

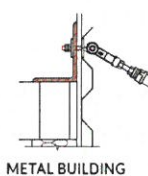
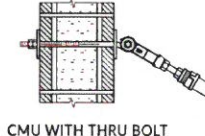
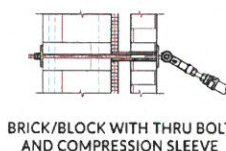
DECK OPTIONS



FASCIA OPTIONS



WALL MOUNT DETAILS

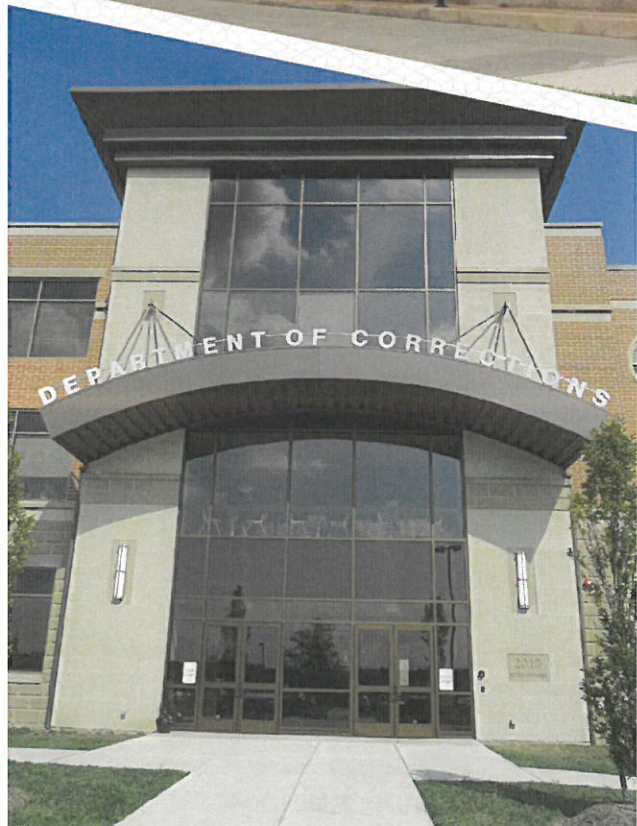
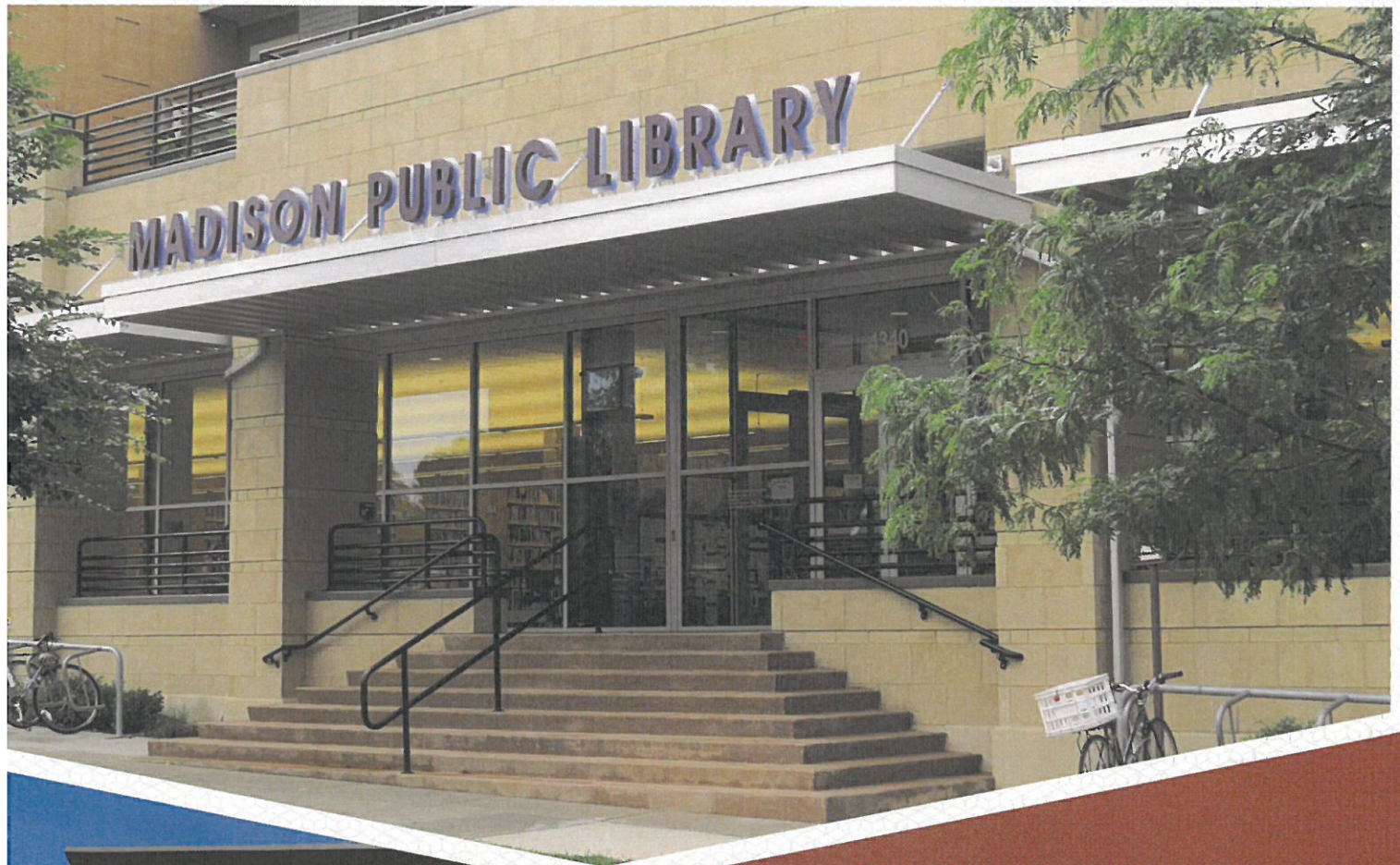


MAPES ARCHITECTURAL CANOPIES

7748 North 56th Street, Lincoln, NE 68514 Phone: 888-273-1132 Fax: 877-455-6572 mapes.com



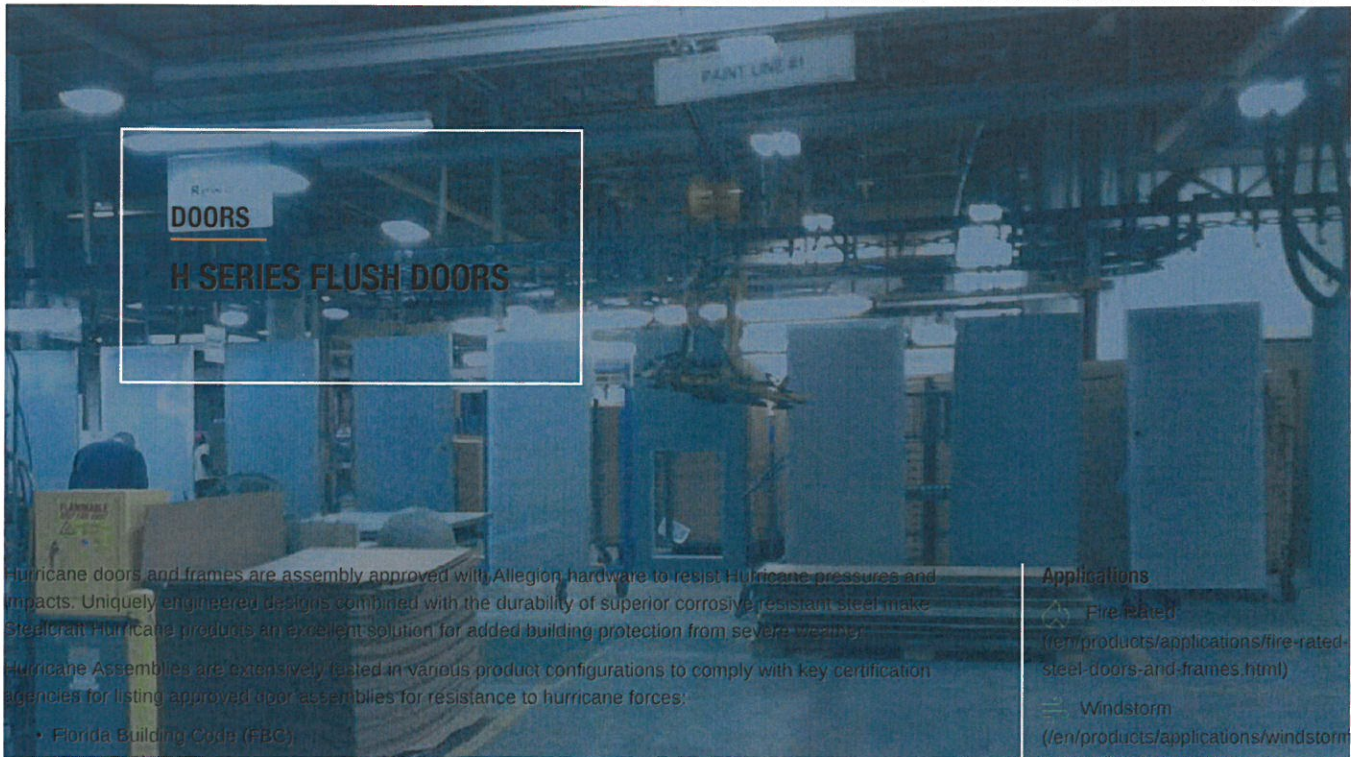
SUPER LUMIDECK



ALL-WEATHER CANOPIES. AND WE MEAN ALL-WEATHER.

The Super Lumideck canopy is an all-extruded, pre-engineered canopy designed for high-load architectural applications. The square, corrugated deck provides long-term strength and durability. A variety of different fascia profiles and attachment methods deliver the ultimate in design versatility, while keeping installation simple and straight forward. Compared to the alternatives, Mapes aluminum, non-rusting finish and high-quality extruded materials offer superior longevity, while meeting all local code requirements for snow and wind loads.

For more details, please visit mapes.com



Hurricane doors and frames are assembly approved with Allegion hardware to resist Hurricane pressures and impacts. Uniquely engineered designs combined with the durability of superior corrosive resistant steel make Steelcraft Hurricane products an excellent solution for added building protection from severe weather.

Hurricane Assemblies are extensively tested in various product configurations to comply with key certification agencies for listing approved door assemblies for resistance to hurricane forces:

- Florida Building Code (FBC)
- Miami-Dade (MD)
- Texas Department of Insurance (TDI) listing requirements for resistance to hurricane forces

Applications

- Fire rated
([/en/products/applications/fire-rated-steel-doors-and-frames.html](#))
- Windstorm
([/en/products/applications/windstorm-doors-and-frames.html](#))

Downloads

Steelcraft Technical Data Manual
([/content/dam/allegion-us-2/web-documents-2/Manual/Steelcraft_Tech_Data_Ma](#)

FEATURES AND BENEFITS

Strength, durability and ease of installation

- A60 Galvannealed steel for superior strength and resistance to corrosion
- Standard 3/8" undercut to minimize water infiltration
- Variety of core systems depending on series approved and chosen. Laminated to both steel faces, enhancing the structural integrity of the whole door.
 - Honeycomb (Standard): 1" (25 mm) cell kraft honeycomb configuration that increases structural integrity while reducing overall weight
 - Polystyrene (optional): enhanced thermal performance
 - Polyurethane (optional): extreme thermal performance
 - Mineral Board (optional): rigid, temperature rise control
 - Steel Stiffened (optional): welded hat section
- Full height lock side reinforcement channel (H Series only) ensures structural stability and locking hardware functionality under extreme pressure conditions
- Full height, epoxy filled mechanical interlock edges provide structural support and stability the full height of the door edges
 - Edges may be filled (with tack welds around openings) or may be stitch welded and filled, which is proven to be more structurally sound than continuously welded edges which are commonly weaker because of heat buildup.
- Beveled hinge and lock side edges have tighter tolerances and smaller gaps between door and frame face for a better visual appearance and ensuring easier operation and eliminating binding and sticking
- Recessed Dezigner™ Glass Trim creates clean edge, flush with the door surface
- Standard 14 gauge inverted top and bottom channels provide excellent door stability, and is able to be dressed with top and bottom caps